

The Providence, R.I. Pre-Mailing Control Marking on the U.S. 3 Cent 1851-57 Stamp



Introduction

- ❖ The discovery of a number of covers and adhesives has led to a re-examination of what had previously been termed a *silent precancel* on the U.S. 3¢ stamp, 1851-57 Issue.
- ❖ The adhesives have either a single horizontal and/or vertical ruled line (or both) in black pencil and/or red pencil (or both) spanning the stamp from edge to edge.
- ❖ Each off-cover single, as well as those on cover and/or on piece, are cancelled/tied by the black “PROVIDENCE MONTH DAY R.I.” postmark of era.

Early Precancel Users

From: *The History of Precancels*, by N. R. Hoover (PSS 769.568 Hoo, 1989) cites on pg. 13 a *precancel* in single red ink horizontal line on cover with Providence postmark.

Chapter VI - EARLY PRECANCEL USERS (The Precancel Bee 6/33/1-2, 7/33/3)

In so far as is known, this is the first attempt to make a chronological list of early users of precancels. Such a list must necessarily be in a more or less skeletonized form. It represents covers which the writer has seen or which are sufficiently described in the catalog to be made part of this record.

With this as a nucleus, it would be interesting if those owning precancel covers or having access to them, would supply the editor with data which will make it possible to extend this compilation. We may in time get a representative record of the early users of precancels.

| Issue | Description | Mailed by | Mailed to | Remarks |
|-------|---|-----------|------------------------------|--|
| 1844 | 2 ink lines crossing at right angles in center (Hale & Co.)(red or black) | not known | Wm. M. Meredith Philadelphia | Owned by Allan R. Brown |
| | | not known | Mr. Menzies New York | Owned by S. G. Rich |
| 1847 | Wheeling, W. Va. 5¢ and 10¢ | not known | | 2 of the 5¢ and 1 of the 10¢ are definitely known to exist. A. R. B. |
| 1851 | 2 horizontal ink lines 3 1/2 mm apart | not known | | This was a drop letter in Berlin, Vt. A.R.B. |
| 1851 | The mysterious "Paid" cover of which quite a number exist | not known | | A rumor has been circulated that this cover emanated from Phila., but it has never been confirmed. |
| 1851 | Single red ink horizontal line | not known | | In addition this cover has Providence postmark. A.R.B. |

The *Silent Precancel*

- ❖ *Silent precancels* are precancels that do not contain the town name in the imprint on the stamp. These are often called “Lines and Bar Types”.
- ❖ The earliest precancels came before the postage stamp, with printed cancellations on a few stampless covers.
- ❖ Hale, Pomeroy, *et al.* used pen stroke precancels, with limited uses seen on the U.S. 1847 Issue, and the method reaching its peak in the 1890’s.



- ❖ Devices used were held most often by Post Office in 20th Century and by Companies using them in the 19th Century. These could be handstamps, pen, ink, crayon, and/or pencil markings.

Silent Precancel Types

Examples of Lines & Bar Types of *Silent Precancels* from Providence RI.



The Providence “*Silent Precancel*”

The *Silent Precancels: a Catalog of Lines, Bars, & Designs on 19th and 20th Century Stamps Used Postally in the United States*, by David W. Smith (PSS 769.568 Smi, 1995) cites on pg. 125 the Providence *silent precancel*, “Used by: Brown University”.

PROVIDENCE cover 400.00
1 red or black ruled penline
Used by : Brown University

1851: 3



A

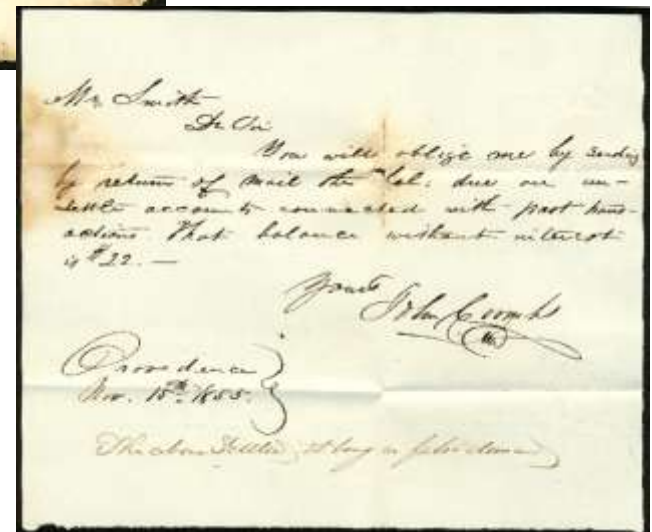


Kindly provided by M. Gutman



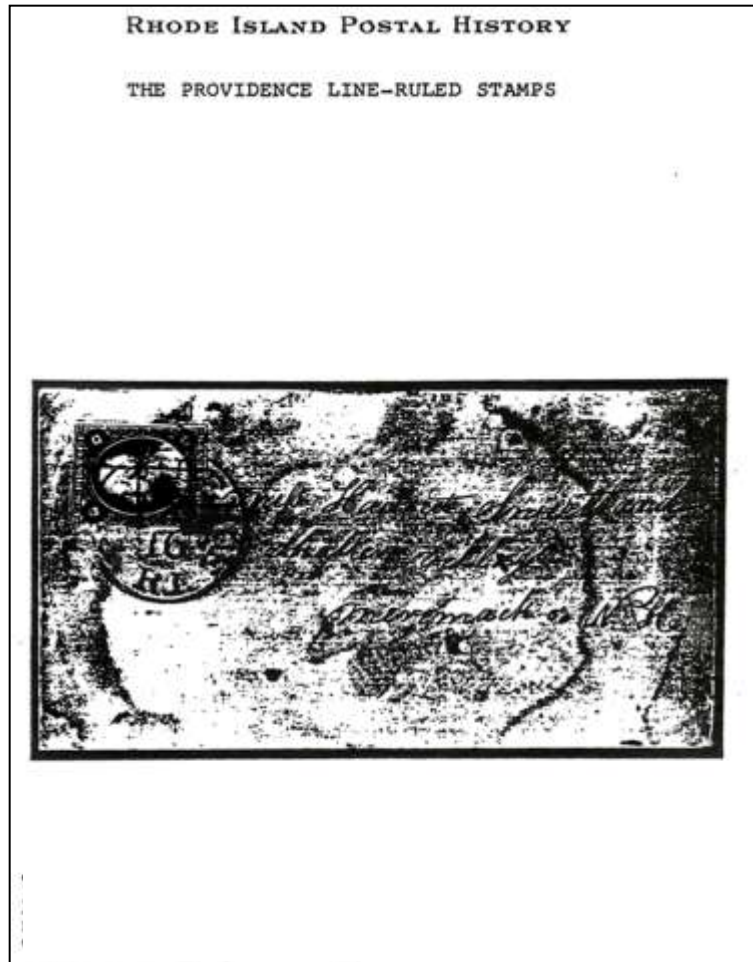
TOWNS - - - 1
TYPES - - - 2

125



The Providence “*Line-Ruled*” Stamp

The *Rhode Island Postal History* by Richard B. Jordan illustrated the following cover in black and white (Exhibit Photocopy, USPCS, Inc., 1988, pg. 66).

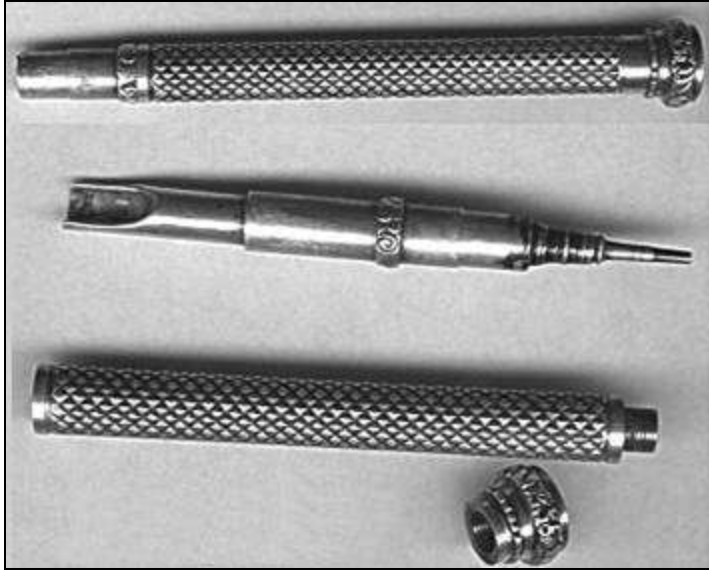


Richard Jordan notes on this exhibit page:

“The 3¢ 1851 is found on cover with perpendicular ruled pencil lines in both red and black. These are control markings applied to full panes within the post office. Their exact purpose has yet to be determined.”

We will revisit this cover later in the presentation.

Writing Implements of the Period



Albert G. Bagely (NY) combo, circa 1846, silver, diamond pattern, amethyst capstone, 4 1/4" closed, "BAGLEY", – this is an early pen/pencil reverse combo with the reverse but not the telescoping case.

From the John C. Loring Collection.



A.W. Faber
"Artists' Pencil,"
circa 1860: This is the first leadholder with all the features required to make an excellent drafting pencil.



Porte-Crayon, circa 1850
First appeared in the 18th century. Still used today by artists to hold charcoal, crayons, pastels, and graphite.



Analysis Overview

- ❖ Examination of nearly 700 Providence covers from 1851 through 1860 and the discovery of thirteen (13) year dated letters/covers confirmed the period of use from June 1855 through October 1857.
- ❖ Adhesives ruled in **BLACK** pencil and/or **RED** pencil/crayon (Horizontal/Vertical or both).
 - 40 off-cover adhesives identified (all examined - two on piece).
 - 33 covers identified (three [3] yet to be examined).
- ❖ Adhesives are cancelled with the black “**PROVIDENCE MONTH DAY R.I.**” postmark of the period.
- ❖ Marking was not used on other 1851 adhesives (1¢, 5¢, 10¢, & 12¢).
 - The Comstock Foochow covers confirm this basic premise and twenty-five years of searching for other examples.

On Cover Discovery Specimens

41R1L



Black pencil H, June 8, 1855 w/letter from U.W. Lowto, Brown University to C.E. Wilbour, Tribune Office, NY

30L3



Black pencil H, July 12, 1855 w/letter from U.W. Lowto, Brown University to C.E. Wilbour, Tribune Office, NY



Off-Cover Specimens



97L1L



69R1L



9L1L



3L4



57L4



33L2L



99R3



77R7(?)

Off-Cover Specimens, cont.



58R3(?)



31L3



29R3



23L4



1R6



9L5L



1R5L

Control Marking Sub-Types

| Implement | Color | Direction | Tally |
|--------------|------------------|------------------|----------|
| Pencil | Black | Horizontal (–) | 41 |
| Pencil | Black | Vertical () | 0 |
| Pencil | Black | H & V (+) | 3 |
| Pencil | Red | Horizontal (–) | 21 |
| Pencil | Red | Vertical () | 1 |
| Pencil | Red | H & V (+) | 1 |
| Pencil | Red & Black | H & V, V & H | 1 |
| Pencil | Unknown (H or V) | | <u>1</u> |
| <u>TOTAL</u> | | | 69 |

On-Cover Specimens



Black pencil H, Sep 7 (1856), Plate 36L3



Black pencil H&V, Jun 12 (1856), Plate 10L5L



On-Cover Specimens



Black pencil H, July 23 (1855), Plate 2L/3



Black pencil H, Mar 22, 1856, Plate 6/7
Docketed "opened by Mrs. Jonathan Slade Mar 25 1856"



On-Cover Specimens



Black pencil H, Jun 4 (1855), Plate 33L1L



Red Pencil/Crayon H, Jan 22 1856, Plate 44R3
w/letter from A.M. Rhodes to Albert G. Wilbur

On-Cover Specimens



Red Pencil/Crayon V & Black Pencil H,
Nov 5 (1856), 31R3
Cc: Walling Publisher of Maps, NY to
Wm Barker, N. Dartmouth, Mass



Black pencil H, Oct 8 (1857),
#25 Plate 6/7
To: George W. Greene, Esq.
107 E 27th, New York

Dr. Chase Knew of Control Marks

- ❖ Dr. Chase's handwriting is well known and easily recognizable, as he made it a point during his pioneering efforts to plate the 3¢ 1851 stamp of writing the position and plate number on the reverse of the stamp.



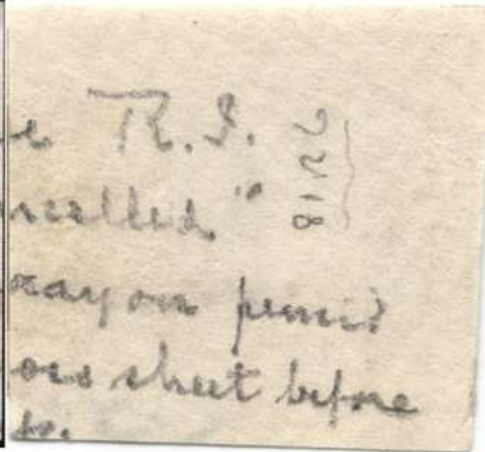
- ❖ Chase would also add other observations on the reverse of stamps and covers.
- ❖ The discovery of two control marked singles (each on piece) and the rediscovery of the “line ruled” cover illustrated in Richard Jordan’s *The Rhode Island Postal History*, reveals that Dr. Carroll Chase knew of this marking.
- ❖ Interestingly, we find no mention of the marking in any of his published works.
- ❖ So while he did not publish his findings, he did leave us with the following.....

The Chase “Precancelled” Piece

36L6



81R6



**Reunited Piece -
April 2005**

**It is interesting that
Chase refers to these
red markings as a
“Precancel”**

**We shall see that
his thinking evolved
with the next cover.**

**Chase writes: “Providence R.I. “Precancelled” by red crayon pencil line across
sheet before cutting into.”**

The Chase “Control” Cover



Black pencil H & V, Jan 16 (1857), Plate 6/7

Dr. Chase notes on reverse: ***"The ruled pencil lines (found in red & black) used in Providence as a control. Authentic & Interesting."***

Then he writes: ***"Apparently a whole pane was thus ruled."***

To: Mrs. Harriet Sweetland, Shakers Village
Merimack Co, N.H.



Provenance: Chase, Jordan, Grossman

From “Precancel” to “Control”

- ❖ I would proffer that Dr. Chase first discovered the two Plate 6 singles with red “lines” on cover (or piece) and put forth his first theory: that these adhesives were “**precancelled**” by red crayon pencil line across sheet before cutting into.”
- ❖ At some later date, Dr. Chase discovered the “Sweetland” cover with the adhesive ruled in black both horizontal and vertical. I propose that Dr. Chase after seeing this surmised that “the ruled pencil lines (found in red & black) used in Providence” were “as a **control**”.
- ❖ It is worth noting at this point that a “precancel” can be considered a type of control marking, but not all control markings are “precancels.” Another type of control marking is a PERFIN.

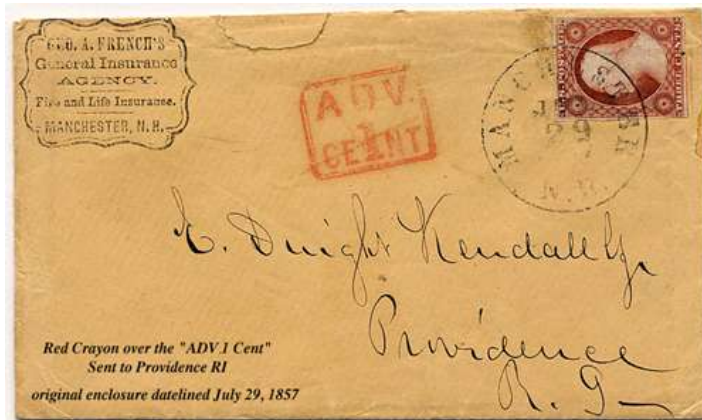
Certification as a “pre-mailing Control Marking”



To date, the APEX has certified over 25 on & off cover examples of the pre-mailing control marking on the 3¢ 1851-57 stamp accepted by the Providence, RI Post Office as legitimate postage.

Providence "Advertised" Covers

Examination of twenty-five (25) covers "Advertised" at the Providence P.O. during this period and beyond (1855-1870's) show either a black pencil or red or blue pencil/crayon marking on the cover front (often obliterating the Advertised marking). The pencil/crayon markings, when compared to the pre-mailing control marks on the 3¢ 1851 stamp/covers, are for all intensive purposes identical.



Who Did The Ruling and Affixing?

The ruling and affixing is open to interpretation and most likely will never be known, but one plausible hypothesis follows:

- ❖ The numerous addressee's and sender's, the black and red marked Advertised covers, the numerous 3¢ plates utilized, as well as the 2.5 year period of use suggest that the Providence Post Office ruled multiple panes.
- ❖ The different types of colored, ruled lines and orientations (H, V, H+V) suggests that the stamps/panes were not disseminated, Why?
 - Prevents pilfering or misuse.
 - Allows multiple account holders to prepay for a pane (or less) of 3¢ stamps.
 - Delivers a convenience to P.O. customers.
- ❖ A customer/account holder arrived with a pile of letters, where the postal clerk would affix the “proper” control marked, prepaid stamps to the covers (the patron might have affixed the stamps just as easily).
- ❖ The postal clerk accepted them as stamped letters, applied the Providence, RI postmark, and entered them in the postal stream.

Who Held the Accounts?

❖ **Brown University:** No on-campus P.O. until 1926, Barnas Sears President from 1855-67. Can tie at least eleven (11) covers to Brown students (Lowto, Lyman, Heywood), professors (Wilbour, Greene), and family members (Larned, Sweetland, Green).

- Probably first and primary account holder.

❖ **H.F. Walling Publishers:** In 1855-57 H.F. Walling, a N.Y. Firm, was mapping the city of Providence, and had an office in the city. Can tie one (1) cover to Walling, it is a corner card embossed example.

- This cover is the only example with a red/black control mark.

❖ **Corliss Steam Engine Company:** The Company was incorporated in 1856 in Providence. Can tie one (1) cover to Miss Nellie Corliss in Newburgh, NY - dated Nov 2 1856. There was a Robert Whitehill of Newburgh, NY that manufactured the Improved Corliss Engine.

❖ **Comstock Steamships:** The Comstock's had a long history in the Steamship Industry in Providence as Owner's, Captains, etc. Can tie two (2) covers to William Comstock who was involved in the China trade.

❖ **Slade Family:** Had Ferry in operation ~200 years until 1876 when Taunton River bridged. Can tie one (1) cover to Mrs. Jonathan Slade, Somerset Mass. Jonathan ran the company with brother William. Their family was from Somerset.

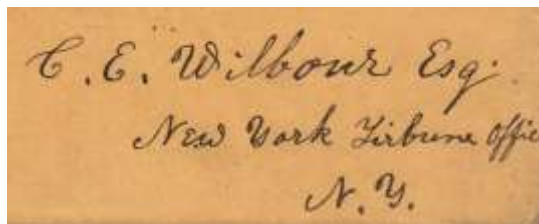
Brown University



Ezra Harvey Heywood attended in 1850's for undergraduate studies. Addressed to his wife Angela Fiducia.



C.E. (Charles Edward) Wilbur, Class of 1854, America's First Egyptologist. In 1854 went to Herald Tribune in N.Y.C. under Horace Greeley. Letters from a former student asking for position.



George W. Greene, Esq.: former Brown University Professor (1848-1852). Moved to NYC to devote time to writing & study (confirmed 107th E. 27th, NY)

H.F. Walling Publisher of Maps



Embossed Corner Card
H.F. Walling.
Publisher of Maps
90 Fulton St. New York

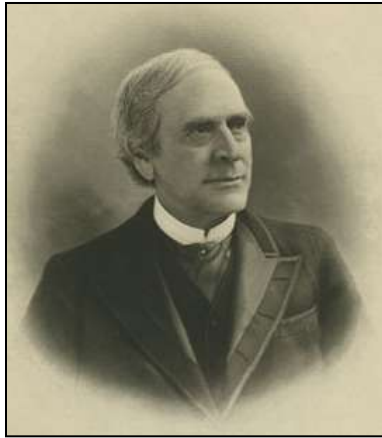


WALLING, Henry Francis, cartographer, born in Burrillville, RI, 11 June, 1825; died in Cambridge, MA, 8 April, 1888. He was educated at public schools and was fitted for college, but became assistant librarian in the Providence athenaeum. He studied mathematics and surveying, and entered the office of Barrett Cushing, a civil engineer in Providence, whose partner he became in 1846. He began topographic work in 1849, and prepared atlases containing full maps and scientific descriptions of most of the northern states. In 1855-57 he oversaw the mapping of the city of Providence. It was said that "to him more than to any one else is due the better appreciation of good maps.

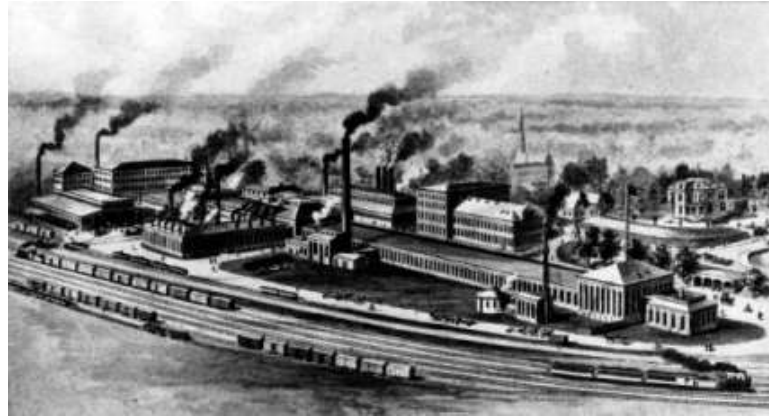


Map of the City of Providence, Rhode Island, from Surveys under the Direction of H. F. Walling. 1857. Graphics Collection, the RI Historical Society, Providence.

The Corliss Steam Engine Co.



Geo. H. Corliss



The Corliss Steam-Engine Works in Providence



1859 Corliss Steam Engine

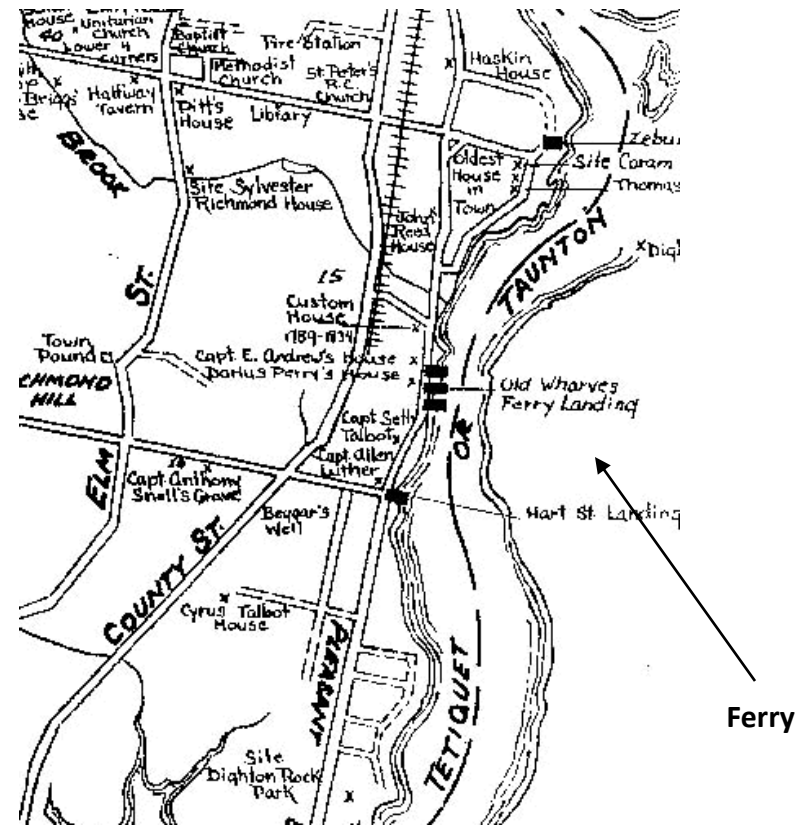


During the 1850's, a Robert Whitehill of Newburgh, NY manufactured the Improved Corliss Engine. This letter is addressed to a Nellie Corliss in Newburgh

Slade's Family & Ferry Operation



Docketed on reverse: "opened by Mrs. Jonathan Slade Mar 25 1856"



William Slade was a large landholder in the 1670's, his domain including the ferry across Taunton river, which has ever been known as Slade's Ferry, and this ferry remained in possession of the family until the river was bridged in 1876, at which time it was operated by William L. Lawton and Jonathan Slade.

The Comstock Correspondence

Upon closer inspection there is a faint black horizontal control mark



NOTE that only the 3¢ adhesive is control marked!

This cover, franked with 38¢ worth of 1851-issue stamps, was carried via British Mail to Hong Kong, where it was forwarded on to Foochow, China. The sender pre-paid 38¢ such that the letter would go out on any available steamer. The Prussian Closed Mail rate at this time to Hong Kong was 38¢. The British Mail rate however was 33¢. This was carried via an American Packet Steamer, thus the U.S. retained 21¢ of the postage. With Britain credited with "12" (ms) for the remainder. 3¢ of this was the standard British fee, and 9¢ was the surcharge for delivery to Hong Kong. Arrived Hong Kong Feb 1, 1857. Provenance: "Sevenoaks", Rogers, Hackmey. Last sold 2013, Siegel Sale 1041, Lot 360, \$16,000

The Comstock Correspondence, cont.

Upon closer inspection there is a clear red horizontal control mark



NOTE that only the 3¢ adhesive is control marked!

Prussian Closed Mails to Hong Kong

This cover, franked with 38¢ worth of 1851-issue stamps, was carried via British Mail to Hong Kong, where it was forwarded on to Foochow, China. The sender pre-paid 38¢ such that the letter would go out on any available steamer. The Prussian Closed Mail rate at this time to Hong Kong was 38¢. Carried on Cunard steamer "Canada". Arrived Hong Kong on Feb 1, 1857.

Provenance: Richardson.

Census of On-Cover Specimens

| No. | Cert | MID/Y | Color & Rule | 3g Color | Filing | Addressee | Encl. | Enclosure Summary | Endorser | Other Notations | "Account" Holder | Evidence | Provenance |
|-----|------------|--------------|---------------|---------------------------------------|----------|---|-------|--|----------------------|--|--------------------------------|---|--------------------------------------|
| x | APS 190602 | JUN 8, 1855 | Black (0.5-) | O.R. | 41R1L | C.E. Wilbour, Esq. New York Tribune (sic) Office, N.Y. | Y | Brown University June 8, '55. Student writing to former professor for job at Tribune | U.W. Lowto | Line curves upward at nose, does not extend to left edge, typical at pane end (suggests clerk marked right to left) | Brown | Charles Edwin Wilbour (1833-1896), Brown Class of 1854, was America's first professionally-trained Egyptologist. In 1854 he went to work for the NY Herald Tribune under tutelage of Horace Greely. | CJD (ex. Swanson) |
| x | | JUL 7, 1855 | Black (0.5-) | O.R. | 53R1L | H. A. Pratt, Esq. Union College Schenectady N.Y. | | | | "Read July 9th" at upper left, pencil "1855" | | Henry A. Pratt | CJD (Ebay 2012, Pratt archive) |
| x | APS 190603 | JUL 12, 1855 | Black (0.7-) | oxidized (O.R.) | 30L3 | C.E. Wilbour, Esq. New York Tribune Office, N.Y. | Y | Brown University July 12, '55. Student writing to former professor for job at Tribune | U.W. Lowto | | Brown | Charles Edwin Wilbour (1833-1896), Brown Class of 1854, was America's first professionally-trained Egyptologist. In 1854 he went to work for the NY Herald Tribune under tutelage of Horace Greely. | CJD (ex. Swanson) |
| | | NOV 16, 1855 | Black (~1.0H) | O.R. | 1L | Mr. Rufus Smith Newburyport, Mass | Y | Providence, Nov 15th, 1855, a request for \$22.00 for unsettled bill of past transactions | John Coombs (?) | | | | M. Gutman |
| x | APS 190598 | JAN 22, 1856 | Red (0.7H) | oxidized (B.C.) | 44R3 | Mr. Albert G. Wilbur Woonsocket, Rhode Island | Y | Providence, R.I. Jan 21, 1856, written by Rhodes for a Marks, speaks of Western tour, Pawtucket, good health | (A. or N.) M. Rhodes | | | | CJD (G) |
| | | FEB 19, 1856 | Red (~0.5H) | O.R. | 5L3 | A.F. Heywood East Attleboro, Mass | Y | Brown University Feb 18, '56 | E.H. Heywood | | Brown | Erna Hervey Heywood was at Brown for his undergraduate education in the 1850s. His wife, Angela Fiducia Tilton Heywood, is to whom the letter was written. | RFW/po-26 |
| x | APS 190596 | MAR 22, 1856 | Black (0.1H) | oxidized (possibly 35 B.C.) | 8 or 7 | Mrs. Jonathan Slade Somerset, Mass. | | | | docket: "opened by Mrs. Jonathan Slade Mar. 25, 1858" | Friend's Academy in Providence | Slade's Ferry was in operation for 200+ yrs until 1876 when Taunton River bridged. Jonathan ran it with brother William. His family is from Somerset | CJD |
| x | APS 190600 | SEP 7, 1856 | Red (~0.8H) | Pale Rose Brown or 35 B.C. | 91R3 | Mrs. Simon S. Steers, New Hampton, N.H. | | | | Docketed "Sept 7, 1856". Line does not extend to left edge, typical at pane end (suggests clerk marked right to left and lifted) | | | CJD |
| | | OCT 24, 1856 | Black (H) | ? | ? | Mr. William Comstock Jun. Foochow, Hong Kong, China, c/o Joseph M. Lord, Esq. | | | | with #6, #54, #35x2 = 38g rate, Red Prov R6 OCT 24 CD5, to Red NY Am. Post OCT 25 CD5, to London. NOV 10, to Hong Kong FEB 1, '57. Docking on reverse with Receiving and Reply dates. Initials "WL..." | Comstock | Comstock has long history in Steamship industry. William was involved in China trade, and his father was a Steamship Capt. | ex. Mark Rogers (Bennett #257, 2005) |
| x | | NOV 3, 1856 | Black (0.7H) | oxidized (possibly 35 B.C. or Claret) | 86L3 | Miss Nellie Corliss, Newburgh, New York | | "Providence Nov 2 1856", 5 pages from brother to sister (Nelly) discussing North and South issues, Eliza Harris parade in Providence, etc. | Frank (Corliss) | "care of H.R. Stevens, Esq." | Corliss Steam Engine Company | This Comp was incorp. in 1855. This was also a Robert Whitehill of Newburgh, NY manufacturer of the Improved Corliss Engine. | CJD |
| | | NOV 18, 1856 | Red (~0.8H) | ? | 97R6L | Mr. William Comstock Jun. Foochow, Hong Kong, China, c/o Joseph M. Lord, Esq. | | | | with #12, #14x2 = 38g rate, Red Prov R6 NOV 18 CD5, carried on Cunard steamer "Canada", to London, to Hong Kong FEB 1, '57. Docking on reverse with Receiving and Reply dates (Feb 2 & Feb 5) | Comstock | Comstock has long history in Steamship industry. William was involved in China trade, and his father was a Steamship Capt. | Richardson, D |
| x | | SEP 18, 1857 | Black (H) | Claret | #25/P1.8 | Miss Hattie M. Welton, Niagara Falls, Niagara Co. N.Y. | | | | Docketed at left "Derwin Sept. 10-1857" | Brown (?) | Hattie is Harriet, later married (~1860-1) Henry (T) Brown Esq. She lived at 33 E 29th St, NY; then Pendleton Center, Beach Ridge, etc.) | CJD (Ebay 2015-07, Chas. Hanselmann) |
| | | OCT 19, 1857 | Black (0.5-) | Claret | #25/3L8 | Miss Laura F. Rowell, South Amherst, Mass | Y | letter, undated; header "Providence, Sunday afternoon" (Oct 18, 1857), written from cousin telling Laura to write mom. | | | | | RFW |

Timeline of On & Off Cover Specimens

| YEAR | 1855 | | | | | | | | | | | | 1856 | | | | | | | | | | | | 1857 | | | | | | | | | | | | | | | | |
|---|-----------------------------|---|---|---|---|---|---|---|---|-----|-----------------------------|---|------|---|---|---|---|---|---|---|-----------------------------------|---|---|---|------|---|---|---|---|---|--|---|---|----|----|----|--|--|--|--|--|
| MONTH | A | M | J | J | A | S | O | N | D | J | F | M | A | M | J | J | A | S | O | N | D | J | F | M | A | M | J | J | A | S | O | N | D | | | | | | | | |
| Prepayment of Mail Mandatory on April 1st, 1855 | 1st | | | | | | | | | | | | | | | | | | | | | | | | | | | | | | | | | | | | | | | | |
| Postage Stamps Compulsory on Mail after January 1st, 1856 | | | | | | | | | | 2nd | | | | | | | | | | | | | | | | | | | | | | | | | | | | | | | |
| Known Dated Covers #11 | | 1 | 2 | | | | | 1 | | 1 | 1 | 1 | | | | | | 1 | 1 | 2 | | | | | | | | | | | | | | | 11 | | | | | | |
| Known Dated Covers #25 | | | | | | | | | | | | | | | | | | | | | | | | | | | | | | | | 1 | 2 | | | 3 | | | | | |
| MARKING COLOR & DIRECTION | Totals include covers above | | | | | | | | | | Totals include covers above | | | | | | | | | | Totals include covers above | | | | | | | | | | | | | | | | | | | | |
| Black Horizontal (BH) | 2 | 2 | 3 | 3 | 1 | | | 1 | | | | 1 | | 1 | | 4 | 4 | 3 | 1 | 1 | | | 1 | | | 1 | 2 | | 1 | 1 | 2 | | | 35 | | | | | | | |
| Red Horizontal (RH) | | | | | | | | 2 | 3 | | | 2 | 1 | 1 | 1 | 2 | | | 3 | 1 | | 1 | | 2 | 1 | | | | | | | | | 20 | | | | | | | |
| Black Vertical (BV) | | | | | | | | | | | | | | | | | | | | | | | | | | | | | | | | | | | 0 | | | | | | |
| Red Vertical (RV) | | | | | | | | | | | | | | | | | | | | | | | | | | | 1 | | | | | | | | 1 | | | | | | |
| BH + BV | | | | | | | | | | | | | | | | | | | | | | 1 | | | | | | 1 | | | | | | | 2 | | | | | | |
| BH + RV | | | | | | | | | | | | | | | | | | | | | | | | | | | | | | | | | | | 1 | | | | | | |
| RH + BV | | | | | | | | | | | | | | | | | | | | | | | | | | | | | | | | | | | 0 | | | | | | |
| RH + RV | | | | | | | | | | | | | | | | | | | | | | | | | | | | | | | | 1 | | | 1 | | | | | | |
| UNKNOWN | | | | | | | | | | | | | | | | | | | | | | 1 | | | | | | | | | | | | 1 | | | | | | | |
| | 17 | | | | | | | | | | 27 | | | | | | | | | | 16 | | | | | | | | | | 61 | | | | | | | | | | |
| PLATE DISTRIBUTION | | | | | | | | | | | | | | | | | | | | | 1st Contract-no #25 to Providence | | | | | | | | | | 2nd Contract - #25 received at Providence PO | | | | | | | | | | |
| Plate 1L | 2 | 2 | 3 | 1 | | | | 1 | | | | | | | | | | | | | | | | | | | | | | | | | | | 9 | | | | | | |
| Plate 2L | | | | | | | | | 2 | | | 1 | 1 | | | 1 | | | | | | | | | | | | | | | | | | | 5 | | | | | | |
| Plate 3 | | | | | | | | | | 1 | | | | | | | | | | | | | | | | | | | | | | | | | | 16 | | | | | |
| Plate 4 | | | | | | | | | | | | | | | | | | | | | | | | | | | | | | | | | | | | 4 | | | | | |
| Plate 5L | | | | | | | | | | | | | | | | | | | | | | | | | | | | | | | | | | | | 6 | | | | | |
| Plate 6 | | | | | | | | | | | | | | | | | | | | | | | | | | | | | | | | | | | | 9 | | | | | |
| Plate 7 | | | | | | | | | | | | | | | | | | | | | | | | | | | | | | | | | | | | 2 | | | | | |
| Plate 8 | | | | | | | | | | | | | | | | | | | | | | | | | | | | | | | | | | | | 2 | | | | | |
| Unplated | | | | | | | | | | | | | | | | | | | | | | | | | | | | | | | | | | | | 8 | | | | | |
| | | | | | | | | | | | | | | | | | | | | | | | | | | | | | | | 61 | | | | | | | | | | |

Final Thoughts

- ❖ Between mid-1855 and late-1857, control marked 3¢ 1851 adhesives were post-cancelled with the Providence, RI CDS and accepted for postage at the Providence Post Office.
- ❖ Brown University appears to be a main “account” holder, with other prominent businesses/families partaking, such as: Corliss Steam Engine Co.; H.F. Walling Publishers; Slade Ferry; Comstock; Steere, Esq., *et al.*
- ❖ It should be noted that 1855 was the year that compulsory prepayment went into effect on April 1st.
- ❖ Could Welcome B. Sayles, the Providence Provisional Postmaster, have enacted this "control marking" process over this 2.5 year period until the new system of prepayment was firmly in place? I believe that is the case.

Acknowledgements

- | | | | |
|-----------------------|---------------------|---------------------|---------------------|
| - Dr. W. F. Amonette | - Michael S. Gutman | - Robert McCaughey | - Charles C. Temple |
| - Richard Celler | - Robert R. Hegland | - Stanley M. Piller | - Tim Treen |
| - Samuel Cox | - W. Wilson Hulme | - Don Richardson | - John Valenti |
| - Mark S. Friedman | - Richard B. Jordan | - Arnold Selengut | - Greg D. Weber |
| - Gary Granzow | - John Kellerman | - Charles C. Souder | - Roy P. Weber |
| - Thomas E. Greene | - Stephen Kittle | - David W. Smith | |
| - Maurice B. Grossman | - Rob Lund | - Mr. Swanson | |

References

1. Robert F. Chambers R.I. Cover Collection (B&W photocopies).
2. *The History of Precancels*, by N. R. Hoover (PSS 769.568 Hoo, 1989).
3. *Rhode Island Postal History*, by Richard B. Jordan (Exhibit Photocopy, USPS, Inc., 1988, pg. 66).
4. *Silent Precancels: a Catalog of Lines, Bars, & Designs on 19th and 20th Century Stamps Used Postally in the United States*, by David W. Smith (PSS 769.568 Smi, 1995).
5. *Postal History and usage of 1907 and Earlier Precancels*, by Charles C. Souder.
6. *The 3¢ Stamp of the United States 1851-1857 Issue*, by Carroll Chase, Quarterman Publications, Inc., Revised 1975.

Questions?

