

# Philatelic Society of Lancaster County



An Affiliate of the American Philatelic Society: James Buchanan Chapter, # 173

**Club Meeting: Wednesday, 11th June 2008**

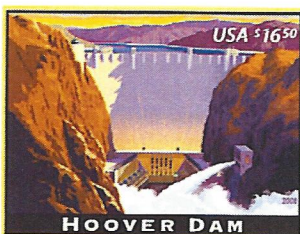
Bourse opens at 6:30 PM and Meeting starts at 7:00 PM

BlueBird Commons/ Wood Crest Villa. Tonight's host is Leslie Botte

## Retention Revenue, Anything New? Canadians needed crowd control in 1897

Through the philatelic literature the USPS is admitting that many of their expensive stamps and related products are basically for collectors and retention revenue. Anything new here? Remember the Columbians and the stir they caused in 1893? It has all been said before. The May 2008 issue of *Stamps Magazine* contained a great review of the reception of the Canadian 1897 Queen Victoria Jubilee issue. This was a sixteen stamp set ranging in value from 1/4¢ to \$5.00. However, only 75K of the 1/4¢ and 150K of the 6¢ were to be issued, as the postal officials expected little postage use for these. The paucity among these low values only created a demand among collectors. Further, the \$4 and \$5 stamps had no postal use whatsoever.

At the time, the Canadian postage to the farthest distance for the heaviest package was only \$3.59!



On the 19<sup>th</sup> June 1897 the lines formed at the PO in Toronto. The first customer, a dealer, requested \$100 worth of the 1/4¢ and 6¢ stamps! He was refused, and then it was announced to those on line that to get these stamps, customers had to purchase the full set. This had a high face value of \$16.205, real money back then. Customers did not

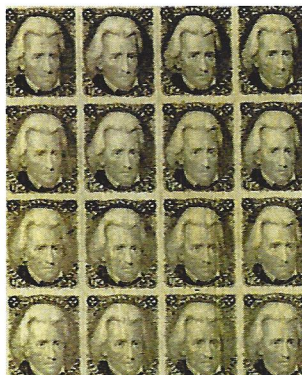
want to hear this. Police were called in for crowd control. There was great anger over the redundant high values and a feeding frenzy to purchase select low values.

This excitement prompted an editorial in a contemporary philatelic journal, *The Boston Stamp Book* where it was stated: "Of all the swindling, outrageous, mismanaged, worthless issues of stamps that were ever made available for postage within a civilized country, they are the worst." Whoever said that great prose in philatelic journalism is dead? By the way, current catalogue values according to Stanley Gibbons are as follows: The whole mint set is £4K, and it is £2750 used. A cancelled 1/4¢ is £50 while a used 6¢ stamp is £90. Ed □

## The Black Jack: June, '08 Program

July's educational session is a 41 minute APS slide show by Paul J. Wolf entitled **The Black Jack**. The APS description of this program follows: "The 2-cent US stamp of 1863-1867, commonly referred to as the Black Jack, features a portrait of President Andrew Jackson. This is a popular stamp among philatelists because of its many varieties; grilled and ungrilled,

specimens, control-number overprints, bad perforations, off centering, and color differences. On-cover examples show the Black Jack meeting varieties of postage rates alone and in combination with other stamps. Highlights include fancy cancels on Black Jacks, bisects, and Black Jacks used on advertising covers and on foreign mail." Don't miss this.



**Volume 81, Issue 6  
June-2008**

### Inside this issue:

*Retention Revenue* 1  
*June Program-  
The Black Jack*

*Meeting Minutes; The* 2  
*Treasury; Member-  
ship*

*Donating Stamps* 2  
*Musings: Findings in  
a \$3 auction lot*

*Club Notes: New* 3  
*Members; Programs  
and Hosts; Dues*

*A Fall Buyers Guide;* 3  
*USPS New Issues will  
have a short life*

*NYC Fall Mega Event* 3  
*Prelim on club trip*

*PVC & Stamp Dam-* 4  
*age: A report from a  
German Collector*

PSLC Meets the second  
Wednesday of the month (except  
August) at BlueBird Commons/  
Wood Crest Villa at 7:00 PM

### President:

Eleanor Wheeler

### Vice President:

William P. Snyder

### Secretary:

Lori Hostetter

### Treasurer:

Claire Smith

### Newsletter Editor:

Paul Petersen; 717.299.5640





## Donate Your Better Stuff

Recall the January column on New Year's Resolutions and reducing our collections through weeding out. Make them lean and mean. Is your estate easy to sort through for the kids, especially if they decline to collect? An auction is one way to do this as well as giving stamps to local kids and/or junior club members. What I did not emphasize in the column were the larger charitable organizations for the better stuff in our collections. Several times over the last few months, the group *Stamps for the Wounded* has been brought to my attention. Founded by FDR and his dealer friend, it is still most viable, and is now associated with The Lion's Club, and with John Hotchner, a philatelic journalist who many of us revere and trust.

In the presence of war, stamp collecting can become a great hobby for those recuperating from illness and injury. But service members need donations of stamps and collecting materials. On the other hand, youngsters need donations too. After all, the future of the hobby is in the hands of youth. Boys Town has had a museum and reputable program for years. Both organizations are listed below, but still others are out there. You can seek them in *Linn's* and other philatelic pubs.

Larger groups do not need missionary mixes, kiloware, or modern FDCs/CTOs. Older material in good shape, and foreign and domestic sets are always welcome as are collections from a single album to a box load. You can send a set or two today. But for larger donations and tax receipts, the IRS rules are fussy. It is better to contact an organization ahead and work with them. I have requested such information and will have it available for those interested in pursuing this line.

### Leon Myers Stamp Center

13628 Father Flannagan Blvd.

Boys Town, NE 68010

### Mr. John Hotchner

Stamps for the Wounded

Box 1125,

Falls Church, VA 22041-0125

## Minutes From the Secretary Lori Hostetler

The meeting was called to order at 7:06 PM. **Guests** included Sandra and Roger Pickering, Bill Snyder's neighbors. George Tucker from New Holland also visited. He collects early space race, US, Russia, France, and misc. philatelic areas.

**Newsletters:** If any members are having a problem with receiving the newsletter, please let Paul know.

**Dues:** Lucy announced that several have not paid '08 dues. Non-payment will result in being dropped from membership and mailing list. A renewal notice will be placed in future December Newsletters allowing for payment of dues by mail or in person.

**First Sunday Stamp Bourse** will be on 01st June.

**Lancopex:** Thanks were given to all who helped with the

show. Four club members had exhibits, and perhaps more next year. A vote was taken to purchase four additional exhibit frames from APS. Dealers provided positive feedback. All but one made their financial goals, the remaining one was close. The club gave a special thanks to Jim Boyles for his hard work and dedication on making our stamp show a success (Jim is the best!!).

**Judging:** Bob Noble reported that Ken Martin, a Lancopex judge gave him an effective critique on his exhibit. APS publishes a book and slide show on "exhibiting," and Truude Greiner has a copy of the book for those interested in borrowing it.

**Food:** Hess' Barbecue does catering for the Farm and Home Center. Maybe we can look into this for next year's stamp show

and meals for the dealers.

**Lancopex manual:** Eleanor Wheeler is compiling a handbook for the timelines, contacts, forms, and details, etc of the show. Those who help with the show should contact her to contribute information and help.

**Drawing:** John Ford's name was drawn for the \$10.00 prize, but since he was absent, the prize will extend to \$15.00 for the June meeting drawing.

### The Treasury-Clair Smith

Open bal- \$5,667.65

Income- \$2,531.65

Expenses- \$3,091.77

Closing bal- \$5,107.85

**Hospitality/Membership:** (Lucy Eyster) Thirty-one (31) members signed the attendance roster for this meeting. There were several guests and spouses also in attendance.

## Musings...

### Findings in a three dollar auction lot

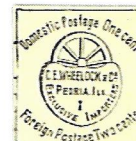
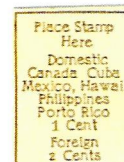
I enjoy auctions, and following the club auction in May, Lou DiFelice and I went through our dollar and three dollar boxes respectively. What treasures were in store? One collector's double is another's treasure! Among his many finds, Lou got a gazillion Red Washingtons (Scott design type A-88) and just as many 1933 NRA stamps (Scott 732). We could have used the latter as door prizes for our FDR PowerPoint in April.

My box lot contained a load of interesting Chinese stamps from the 1930s among a few early US, a bonanza. There was also an *Alfred E. Neuman For President* label which looked like it was from the

60s. After all, I paid three times as much for my box lot as Lou paid for his. Further there was a load of stamped corners torn off old post cards, apparently for the stamps. Unfortunately, they appeared to have been pristine picture post cards. The material was stiff and colourful, a real shame, especially for the post card collector. After soaking the stamps off the torn corners, I found a variety of styles of framed legends of postal rates to US, Canada, and Mexico. These may be worthy of collecting in and of themselves.

The bounty of post card collecting is evident. There is the postal history, the stamps (obviously), the

thematic picture side of the card, and the message on used cards. The hand written messages are of great interest for my WWI related stamps, post cards, and memorabilia. I am looking forward to our 09th July program on the topic of post cards. I soon realized that I have a lot of doubles that I will never use. But rather than keeping lots in boxes for posterity or for the day that they may be worth millions, I should divest, or better, invest in the hobby by donation.





## Miscellaneous Club Notes:

### New members, Programs, Hosts, Dues

**Membership:** Lucy Eyster reports three (3) new members: **Raymond Haws** from Cheney, PA collects US. **Stan Raugh** from Temple, PA, collects "everything." **H. Dennis Shumaker** from Marietta collects US classics, Confederacy, and Civil War postal history. Please welcome our new members.

**Program and Snack Schedules for the remainder of the year:**

**11 June:** APS Slide Program: The Black Jack; Leslie Botte-Host; **09 July:** History of the Postcard (Dick Pendergrast), Dianne Meek-Host; **13 August:** Club Picnic at Shirley's (No host); **10 September:** Auction; Dick & Eleanor Wheeler-Hosts; **08 October:** Lancaster Postal History (James G. Boyles), Lou Leidig-Host; **12 November:** Newfoundland (WP Snyder), Dick Colberg-Host; **10 Decem-**

**ber:** Christmas Party (No host). **DUES:** June will be the last newsletter for those who have not paid dues for the 2008 year. There is still time to renew memberships. Simply send a check for \$10.00 made out to LCPS and mail it to PO Box 0982, Lancaster, PA 17608 LCPS would hate to lose any members, so the six months dues extension has been given for any who may have forgotten.

## Fall PSLC Buyer's Guide

Coming in August Newsletter

The August edition will tentatively contain a Buyer's Guide for the club. This will list the products and services for PSLC members by our member-dealers, those dealers who attend club meetings regularly. I have solicited our dealers and the Lancaster PO's Philatelic Window for this information to include in the newsletter. Long gone are the days when a collector could go

downtown to the local stamp store and purchase stamps and philatelic supplies while gleaning the expertise of the dealer and fellow collectors who were shopping.

The doors to BlueBird Commons are now open at 6:30 PM, a half hour before the meeting starts. This additional half hour will allow for a little of that old fashioned customer service from our

dealers who will have tables with stamps and supplies available-a mini bourse each month. While the dealers are usually available at other times by appointment, the monthly schedule will be easy to remember. Some dealers will take orders over the phone or by email if lead-time is sufficient and have what stamps and materials are needed at the time of the meeting. □

## NYC's Mega Event

### Preliminary Planning for the NYC Trek

Roy Baardsen, PSLC's Assistant Social Chairman and Trek Planner Extraordinaire recently contacted the editor about a trip. While there had been a schedule conflict with the Reading Show and the NYC Mega Event, this is no longer the case. In keeping with a PSLC yearly trip, Roy is willing to plan

this season's event for us if there is interest. So please save the date: **Thursday, the 23rd October 2008.**

Roy will bring this up for club discussion at the June meeting, as he will have to start making the reservations if it is a go for the Madison Square Garden event. He will present the costs

and hours involved. But he asked that you consider the following: The trip will be more than the last trip at \$25 due to the petrol prices-probably closer to \$40. Travel will be long with 3-3.5 hours each way. Take a non-collecting spouse to shop NYC! Members from other clubs will be recruited to fill the bus. □

## US New Issues May Have a Short Life

We are finally adjusting to the one penny rate increase of 12th May, and with new stamp pricing regulations, we will probably see very small rate changes annually instead of larger denominational changes every several years as we have experienced in the past. Will we ever experience the days when the rate remained stable for 15 years or more?

What this means is that newly issued stamps will have a short shelf life. Examples are the two 41¢ Polar Lights that came out in October. I really liked them and finally got around to purchasing them right after Christmas. There were none in the local POs, so I decided to pay the buck postage and order several sheets at \$8.20 each from Kansas City.

Backing up a little, my Scott's national specialty album ends with 2004. For various reasons, I was done with new US. I will still buy the ones I like for postage and retained revenue. But there are only a few issues a year that appeal to me. In fact, I have more fun franking my mail with older and favorite stamps, often in multiples.

Once I got through to the Cave in KC, I was told that they, too, were sold out of the Polar Lights stamps! "Yes, the stamps were very beautiful and popular," I was told. But these words of comfort did nothing for my frustration and procrastination. However, if I so desired, I could purchase a sheet bundled with two digital postmark first day covers...for only \$11.20! The bundles are still advertised in the Kansas City catalogue (USA Philatelic).

What is the moral of this story? Don't wait. If you see some stamp(s) that you got to have, head to the local POs immediately if not sooner. If they unavailable there, order them from the Stamp Fulfillment Service right away. It is better to pay the postage than miss out on an item. I have the feeling that with the projected annual price changes, there will be fewer stamps printed of each issue; they will not be universally available; and they will not be on sale for very long. Better buy 'em now! Ed □





## PVC protectors and classic stamp damage

What a German collector has to say

Many of us have stored our better philatelic material in plastic, and a lion's share of this material is known as PVC, or poly-vinyl-chloride. Further, a stabilizer in PVC is sulfur, and under the right conditions of temperature and humidity, the sulfur reacts with the lead in certain stamp papers and inks which were common in many of the German classic stamps. This chemical reaction forms lead sulfide or PbS, its chemical symbol. Stamps which have been stored as such since the 1970s have been damaged up to millions of Euros a year. Damage is not limited to German classics.

In an article to the May 2008 *German Postal Specialist*, Peter Feuser presented the case. Many German philatelists have observed this damage and came to the conclusion that correlates PVC to certain stamp damage. Stamps stored in other means, he said, and under varying conditions of temperature and hu-

midity (and two or three wars!), have not shown the changes!

PbS is damaging to stamps and covers in three ways. 1.) **Color changes:** Orange, yellows, and reds can oxidize in general, but this is exacerbated when materials are stored in PVC. 2.) **Burlage:** Typically invisible, PbS can bring out the burlage and ruin the stamp design, giving it the appearance of being printed on a chain link fence. Burlage was introduced as a fine network of lines or dots overprinted on stamps to retard counterfeiting or reuse of the stamp. 3.) **Paper change:** PbS can cause paper discoloration and ultimately disintegrate the stamp.

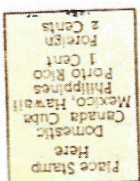
The PbS damage issue was upheld by the German Paper Technology Foundation who noted the migration problem and how this has already led to the ban of PVC for containing food

and medical substances. They extended the logic that if it can harm food and Rx, it will harm paper.

As interesting as the finding of damage was the attempt to provide a stern warning to stamp collectors about PVC and philatelic risk. The German federations of auctioneers and philatelic experts supported such a warning, but it was blocked by an injunction by the stamp dealers association. Many of their members either produced or marketed albums and other protective devices containing PVCs. Perhaps for political reasons, Germany's version of APS declined to support the warning. As a result, what warning was allowed by the courts was so limited it was inconsequential. The courts want research comparing stamps both with and without

PVC storage under varying conditions of temperature and humidity. Further, it is to be over a long time period. This was the nail in the coffin. Who wants to purposefully risk classic stamps. As my cynical father-in-law used to say, "Who are you going to believe, tlawyers or your own eyes?"

Action steps for philatelists should be obvious. Check your classic stamps, and find alternative protection and storage materials to PVC if you can. Never use the kind of device that completely surrounds the stamp and blocks the airflow. Air is good for stamps. Even hinge-mounted stamps should be exposed to the air. Fan your album pages annually. Finally, don't fret over newer stamps, PVC is not harmful to them, as lead has been punished in many ways over the years. Ed□



Philatelic Society of Lancaster County  
PO Box 982  
Lancaster, PA 17608-0982