

Philatelic Society of Lancaster County



An Affiliate of the American Philatelic Society: James Buchanan Chapter, #173
Chapter 118 of the American Topical Assn.



Dinner: Wednesday, 12 December 2012

Garden Café opens at 6:00 pm, Dinner served at 6:30 pm

Directions to the Garden Café → See Page-2, lower left

From the President

I can't believe that the year has gone by and my term as president is over. It seems like yesterday. I hated to miss the last couple of months. My health is returning now, and I hope to be on the upward swing. Paul has been keeping me up to date regarding recent club events, and I understand that there is a full slate of officers for the 2013 year. My hat is off to them all for their service.

The Topical Association's show here in town was most noteworthy. I was glad to attend that one and catch up with several friends and acquaintances and meet new dealers. And from what I have been reading, this was one of their best ATA shows

in years. They generously recognized the club for its part of that great success. Thanks go to Lucy, her committee, and volunteers.



As I am into history, I realized that 2012 marks the 50th anniversary of our first U.S. Christmas Stamp (Scott#1205) released in Pittsburgh, PA on 1 November 1962. And that new Holy Family stamp, this year's Christmas stamp, is an inno-

vative design and most attractive. (Ed's note: See page 4 for this stamp.)

It's been quite a year. We've lost members, notably Jim Boyles in June. He should be remembered for doing so much over the years. His management of Lancopex earned a regional reputation.

With the end of the year, many thanks are due to all our volunteers including Lancopex, the minutes and treasurer's reports, meetings/programs, auctions, newsletters, picnic, new members, and the show cachets. Many of you just do things regularly and quietly, and this makes the club run so smoothly. Have a Happy Holiday Season. **Bob**

Highlights

- Time:** 6:00 PM
- When:** Wed. 12 Dec.
- Where:** Garden Café
- Why:** Great Cuisine
- Cost:** \$7.00 per person
- Volunteer Gift Exchange:** To enter the exchange, please bring a wrapped \$7.00 philatelic and/or non-philatelic gift. You may participate in either or both gift exchanges. Please mark all non-philatelic gifts as such.

From a Grateful Editor...

The December issue is the place and time of the year to recognize all of those who made the PSLC Newsletter a possibility. It is easy to sit behind the keyboard and scanner and lay out an issue, but it takes many other hands to bring this about.

Great appreciation is extended to President Bob Epler, Secretary Joy Bouchard, and Treasurer Lou DiFelice for their timely and user friendly submission of their monthly columns. Thanks to Circulation Assistant, Diane Meek (with

the help of Marilyn Shirley), "Labelmeister," RD Noble, and Proofreader, Carol Petersen. Articles, topics, and content were gratefully received from Lou DiFelice, Al Schaub, Dick Colberg, Mike Bach, and Lucy Eyster. Ed.



For more slogans, see pg. 4.



Volume 75, No. 12

December, 2012

Highlights inside...

- Dinner Menu
- 2013 Programs/Hosts
- Commonwealth Bank
- Club News/Notes
- ATA Award
- Lancaster Co. Stamp
- November Minutes
- 2013 Club Officers
- Respite in Reading
- Dues Notice
- Slogan Cancels

VISITORS ARE ALWAYS WELCOME

PSLC Meets the 2nd Wednesday of the month (except August) at The Bluebird Commons in Woodcrest Villa, 2001 Harrisburg Ave, Lancaster. PA 17601 at 7:00 PM. Dues are \$10.00. For club info, call Lucy Eyster: 717.735-2586

President:

Bob Epler:
betinnahef@msn.com

Past President:

John Bray:
jonboy@dejazzd.com

Secretary:

Joy Bouchard:
jib672@yahoo.com

Treasurer:

Lou DiFelice:
loudifelice@gmail.com

Membership, Publicity, & ATA Rep

Lucy Eyster:
lucyeyster@yahoo.com

Newsletter Editor, Programs, & APS Rep

Paul Petersen; 717.299.5640
pcpetersen@comcast.net



🔔 **MENU** 🔔

Fresh Spinach Salad
with Mushrooms, Vi-
dalia Onions, Hard
Boiled Eggs and Hot
Bacon Dressing

Rolls and Butter

Entrée Selections:

- **Chicken Dijon**
- **Fresh Atlantic Salmon:** Fresh dill sauce on the side
- **Prime Rib of Beef:** Carved to order

Sides: Baked Potato,
Potatoes *Au Gratin*,
Fresh Broccoli & Cau-
liflower, Baby Carrots

Desserts:

Marble Sheet Cake:
*Happy 75th Anniver-
sary PSLC*

Vanilla Ice Cream
with Hot Fudge

Drinks: Coffee, Iced
and Hot Tea

To the Garden Café

Directions: To reach the Garden Café at Woodcrest Villa, enter the facility on Harrisburg Avenue. At the T-intersection, turn left. Make your first right, and the Café is at the end of the drive. It will be well lit.

November Minutes and Treasury

Joy Bouchard and Lou DiFelice

Opening Announcements: Paul Petersen opened the business meeting at 7:00 pm following bidding on the silent auction. He welcomed new members and passed around sign-up sheets for **2013 Snack Hosts** and for presenters for the June & July '13 **program openings**. He announced the **75th Anniversary Committee** to include: Joy Bouchard, Truys Greiner, Sarah Mylin, Fred Sargent, Al Schaub, & Eleanor Wheeler. They will appoint a spokesman. Paul asked for a volunteer for **Door Prize Manager** for Lancopex. Mike Matus & Roy Baardsen volunteered.

Membership: Lucy Eyster announced that there were 36 in attendance including Clair Hostetter, first-time visitor. She will be collecting **dues** tonight and in December. Lucy also had a

list of members' philatelic interests for all involved.

Dinner: Lucy announced that the drop-dead date to sign up for the dinner or to cancel is Friday, 7 December. Those who cancel after this date will have to pay, as their reservation will already have been confirmed with the facility. Call her at 735-2586. Paul added that there will be both a philatelic and non-philatelic **gift exchange** and dinner-goers can participate in either or both.

Minutes/Treasury: November minutes and treasury report were approved unanimously by voice vote.

Competitive Exhibiting at Lancopex: Lou DiFelice solicited members' interests in exhibiting non-competitive aspects of their collection at Lancopex, as there will be no competitive exhibits at the show.

Drawing: Philatelic prizes were won by Sarah Mylin, Ray Stanitsky, and visitor, Clair Hostetter.

Officer Election: The following slate of officers was approved unanimously by voice vote: **President:** RD Noble; **VP:** Len Kasper; **Secretary:** Joy Bouchard; and **Treasurer:** Lou DiFelice.

Ave et Vale: Jim Ziogas announced that Lebanon stamp dealer, Bill Levensgood passed away last week.

Auction Items: Silent Auction-There were about 17 lots in this sale. **Live Auction:** Al Schaub auctioned the Christmas Seal collection donated to the club by the Deaner Estate.

Treasury Report

Opening: \$4,084.03 (1 Oct)

Income: \$612.00

Expenses: \$146.56

Closing: \$4,549.47 (31 Oct)

3-CDs valued at \$6,732.88

Proud to be in Lancaster Co.

Letter to the Editor:

I would like to share a pleasant experience I recently had. The day after Thanksgiving I went to the Post Office to get stamps for Christmas Cards to send to Europe. I had to buy the \$1.05 stamp which is the "Lancaster County" stamp (Fields and buggy). The young lady at the Post Office made the following comment: "Isn't it great that anyone sending a card

to Europe this Christmas from the USA, from Hawaii to Alaska and Maine to Florida will feature Lancaster County. Now that is quite something."



See you all at the Christmas Party, **Mike Bach**

ATA Award

The American Topical Association came in second in a field of eleven competitors in the International Philatelic Literature Exhibition held in Mainz, Germany (2-4 Nov). Their submission entitled "Topical Tidbits" was in the division developed to promote philately for young collectors. It includes several modules for the kids, teachers, and philatelic youth leaders. First place was won by the German Department of Education and Youth, while Stamp Camp USA came in third place. **Lucy**



PSLC Gets Some Respite at the Reading Stamp Show

Reading's Stamp Show on 3rd November came in the nick of time, right in between Hurricane Sandy (the Storm of the Century, they called it) and a very protracted presidential election.



Mike Bach (L) & Roy Baardsen (R)

What's even better is that there is crossover membership among our clubs. This is great come show time!



David Hunt & Dennis Shumaker

Five to six years ago, Roy Baardsen from the Reading Club joined PSLC. He liked what was done here and started to bring other Reading Club members to Lancaster.



Lesley Botte at her Dealer's Table

In time there were up to five club members from Reading.



Mike Matus (seated)

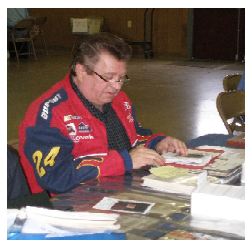
They have contributed significantly to PSLC through presenting educational programs, writing for the newsletter, and working with our *Lancopex* Stamp Show. Roy B. and Mike Matus have served as Trekmeisters for our yearly to biannual bus trips. They are

now working on the 2013 trip to the Nat'l Postal Museum in DC where we'll see the good stuff in the vault.



Al Schaub, John Heitzman, & Sarah Mylin

We all needed a little stress relief this weekend, and we found it in the banquet room of the Leesport Farmers Market. The Postmaster from Leesport had a table with the latest stamps and Christmas ornaments.



Len Kasper

Club Programs

Hosts & History

2013 Programs and Hosts

9 January: Club Auction. RD Noble, Host.

13 Feb: Number Ones of the World, a DVD from APS. Paul Petersen, Host.

13 March: The Sharples Co.: Philatelic & Deltiologic Edification, Bill Schultz. Dick Shaefer, Host.

10 April: Patriot Postal Card series of the 1970-80s. John Brownell. Al Schaub, Host.

8 May: Club Auction. Host-Open

12 June: Open House Display, Lucy Eyster & Len Kasper. Host-Open.

10 July: TBA* Host-Open.

14 August: Club Picnic.

11 September: Club Auction. John Brownell, Host.

9 October: Topical Study: Stained Glass on Stamps. Dave Hunt. Dennis Shumaker, Host.

13 November: One-Page Exhibits. All PSLC members are invited to participate with one or more exhibit pages. Bill Snyder, Host.

11 December: Dinner Banquet

Club History: In the 10/12 newsletter was pictured an old PSLC business card noting the time and place of club meetings. The meeting site was the Commonwealth Nat'l Bank on Lititz Pike. History shows that since the late 1930s, the club met at the Stauffer Mansion until the 1990s when it moved to the Lancaster Twp Community Center. How is this discrepancy resolved? Members David Strayer and Sherman Foot responded with the solution. Sometime in the '70s the Stauffer Mansion underwent major remodeling, and the club had to relocate its meeting site for several month. They met in the basement of the bank. That's the end of the story. Thanks Sherm and Dave for responding. *Ed*

January Club Auction Alert: It is not too late to be preparing for the auction next month. This will be a traditional auction format with the allotted ten (10) items per participant. The November Silent Auction went well, and others are being considered

for future meetings with your feedback. Your **Auction Committee** consists of the following members - **Auctioneers:** RD Noble and Woody Hann; **Recorder:** Dick Shaefer; **Treasurer:** Lou DiFelice, and **Runners:** Jim Ziogas and Paul Petersen.

✂.....

Date: _____

Please clip this notice, complete it, and turn in with \$10 to Lucy Eyster at the December Dinner. You may also mail it to Lucy at 2001 Harrisburg Pk., B-503, Lancaster, PA 17601

Name: _____ Phone: _____

Email Address: _____ APS Member ☐ ATA Member ☐

Please check the APS/ATA box (s) above if you are a paid-up member in good standing.



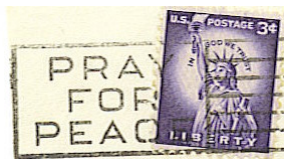
Musings: December-2012

Slogan cancels that you can actually read



Starting with the holiday season about five years ago, an annual set of philatelic traditions began. First, the cards arrive with spray-on cancels. These are slogan cancels which one can rarely decipher. It is sometimes hard to distinguish the image part from the text! Second, collectors write their letters to the editors of philatelic publications to complain about the crummy cancellations on their Christmas mail. I recall one writer's comment that most of them looked like "ink smudges over the stamp and envelope."

But now I'm going to sound just like my grandfather who walked ten miles to school in the winter snow with holes in his shoes. In my day, things were different with the cancels. Not only could you read the slogan cancels but the date and time marks as well! Many topics were interesting, and some we'll never see again.



Even with slogans there is specialization as to greetings, new and better postal services (such as air mail, etc.), non-profit promotionals, holiday issues, and patriotic

themes, to name a few. There are national and local slogans. This is an international phenomenon as well. Some are sufficiently socked on the nose to be legible on the stamp alone. Many are best kept on cover, while some are in the "cut square" format of the past.

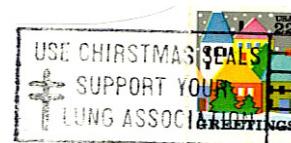
Let me share some of my slogan cancel accumulation with you. As RD and Woody always say about Precancels, slogan cancels are just as fun to collect!



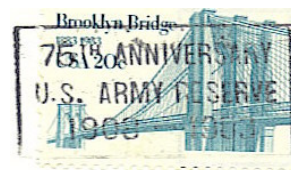
Government programs and US-POD instructions were numerous among the slogan cancels. ↓



↑ Above is a cancel over a military free frank by service members in Korea during the conflict at that time.



↑ Easter Seals and Christmas Seals used to be regulars among the USPOD slogan cancels. Those above include their logos and target charities for handicapped children and tuberculosis and other lung diseases.



↑ Groups and organizations are often depicted on cancellations. The USAR's 75th above and the 25th anniversary of NASA

slogan atop a 1983 Santa Clause stamp as seen below. ↓



Some slogans are no longer politically correct as seen in the 1963 cancel below. ↓



Support of the handicapped has been around in a variety of formats. The bottom one seems to be associated with Goodwill Industries and their work with the handicapped. ↓



The buck stops here ↓: Ed



Philatelic Society of Lancaster County
PO Box 6053
Lancaster, PA 17607-6053

This document was created with Win2PDF available at <http://www.win2pdf.com>.
The unregistered version of Win2PDF is for evaluation or non-commercial use only.
This page will not be added after purchasing Win2PDF.