

Philatelic Society of Lancaster County



The James Buchanan Chapter (#173) of the
American Philatelic Society
Chapter 118 of the American Topical Assn.

Meeting Begins at 7:00, Wednesday, 9 October '13

Bluebird Commons / Woodcrest Villa. Dennis Shumaker, Host
Doors Open at 6:30. Come Early to Buy, Sell, Give, and/or Trade

From the Desk of the President

Sometimes in life things come up, even at the last minute, so it was with great regret that Barbara and I missed the bus trip to the NPM last month. I heard many good things about it from several of you, as there were over 45 from the three clubs. I was really looking forward to seeing some of the old revenues in this great collection. But I hope to get down there when things settle down.

Heartfelt thanks to the planners of the trip including the transport, munchies, door prizes, museum & vault tours, and just good fun. Kudos to Roy Baardsen, Mike Bach, Mike Matus, and Peter Baney.

On the auction...wow! It was about the biggest since I joined the club about ten years ago. Lou said that around 75 percent of the material sold, and


some of the revenue from this was designated to the club. Much appreciated. Additional thanks to the auction team. Lou helped me up front while Dick and Clare acted as recorder and treasurer. Doug was runner.



My next two items are requests. First, this is election time for the club, and officers are needed. Len will

move up to president, though we need someone for VP, secretary, and treasurer. The terms of the latter two positions are negotiable. Give a little back to the club which does so much for you and the stamp collecting hobby.

My second request is to encourage you to participate in the One-Page Exhibits (*Ed's note-See pg.3*) This is coming up in November, so you have plenty of time. It's not that difficult, and the committee swears that there will be no judging. Assistance is available for the asking.

And from what I hear, Lucy and her Christmas Party Committee, and Joy and her 75th Anniversary Committee, are getting ready for the event.  **Bob**

Stained Glass on Stamps—Presented by David Hunt

Tonight's presentation will be a feast to the eyes, stained glass of all kinds—portrayed on stamps. Club member Dave Hunt has visited cathedrals in Europe and the U.S. and has taken many



beautiful photos of the facilities and their famous glass. For those not able to make such trips on their own, Dave has prepared a PowerPoint presentation for us. It includes his photography and scans of worldwide stamps which contain these miniature works of art. Members in PSLC, Reading, and other clubs are familiar with Dave's expertise in this and other areas including Errors, Freaks, and Oddities.



WILLIAM H. GROSS
STAMP GALLERY



Opening Day
SEPTEMBER 22, 2013

**Cachet for First Day Cover
of the new \$2.00 Jenny
issued on 22 September '13**

Volume 76, No. 10

October, 2013

Highlights

- DC Trek: NPM
- Stained Glass
- PSLC in the Vault
- September Minutes
- Bio: Bill Greiner
- Three New Members
- One-Pagers in Nov.
- Officer Elections
- The Titanic
- First Day Cancells

VISITORS ARE ALWAYS WELCOME

PSLC Meets the 2nd Wednesday of the month (except August) at The Bluebird Commons in Woodcrest Villa, 2001 Harrisburg Ave, Lancaster, PA 17601 at 7:00 PM. Dues are \$10.00. For club info, call Lucy Eyster: 717.735-2586

Website: lcps-stamps.net

President:

Robert D. Noble,
rdnoble@windstream.net

Vice President:

Len Kasper,
hotrodparts33@aol.com

Secretary:

Joy Bouchard,
jib672@yahoo.com

Treasurer:

Lou DiFelice,
loudfelice@gmail.com

Membership, Publicity, & ATA Rep:

Lucy Eyster,
lucyeyster@yahoo.com

Newsletter Editor, Programs, & APS Rep:

Paul Petersen, 717.299.5640
pcpetersen@comcast.net



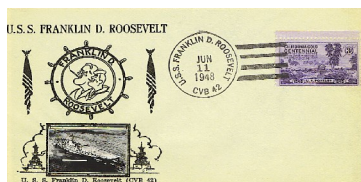
Club Biography

Bill Greiner

Bill grew up in a stamp collecting family with his parents engaged in both the hobby and our club. But his personal collecting was a more gradual process as a late-bloomer. Over the years he worked a lot with the club, and as he helped set up Lancopex every year, he became friends with many members.

His interest in history, especially naval and military affairs, was the impetus to collecting. He loves research, so collecting allows him to hold bits of history in his hands. When club member and dealer Al Schaub introduced him to naval covers a few years ago, this was the tipping point he needed for in-depth collecting and active club membership.

He would like to find both a naval cover with ship cancel and matching postcard for every U.S. vessel from the early 1930s through the Viet Nam era.



His related collecting interest is WWII. He maintains two specialty albums which address WWII world-wide commemorative stamps of which there are many. His other album has censored German wartime material.

While Bill is currently between jobs, his career has centered around machinery maintenance and repair including electrical, mechanical, and pneumatic equipment with some experience in hydraulics. Welcome aboard, Bill Greiner.

September Minutes and Treasury

Joy Bouchard and Lou DiFelice

Opening: President RD Noble opened the meeting at 7:05.

Treasury Report: The July report was approved unanimously by voice vote.

Membership: Lucy Eyster introduced three (3) new members. •Geoffrey Eddowes of Lancaster, •Mark Hollister of Mt. Joy, and •Clair Hostetter of Lancaster.

Annual Officer Election: VP Len Kasper announced that there are openings in 2014 for VP, Secretary, and Treasurer. Nominations will be fielded in October with the election in November and inauguration in January, 2014.

75th Anniversary: Lou DiFelice presented the certificate

celebrating PSLC's 75th Anniversary in APS to Joy Bouchard, chairman of the 75th Anniversary Committee.

Monthly Drawing: A copy of Lawrence Block's philatelic thriller, *Hit Me* was this month's door prize.

26 September Nat'l Postal Museum Trip: Please contact Roy Baardsen with any last minute issues at 610-927-3435

ATA and APS Membership Drawings: Fred Sargent won the club-sponsored year's free ATA membership with the agreement to remain an additional two years at his own expense. There were no entrants for the APS drawing.

One-Page Exhibits: Lou en-

couraged members to prepare their "one-pagers" for the November meeting. He reminded everyone that instructions were circulated electronically with the newsletter for those receiving this format, and paper copies of the instructions are available on the front table for those who receive newsletters in the mail. There is also a selection of free pre-owned document holders for member's use with their One-Pagers.

Treasury Report

Opening: \$4,099.25 (1Aug)

Income: \$0.00

Expenses: \$157.69

Closing: \$3941.56 (31 Aug)

3-CDs valued at \$6,861.88

Stamp Clubs Converge at the NPM

On 26 September the Reading, Lancaster, and Gettysburg stamp clubs filled a bus to the Nat'l Postal Museum. Weather was perfect, though it was a long day. Organizers included (left to right) Roy Baardsen, Mike Bach, Peter Baney, and Mike Matus.

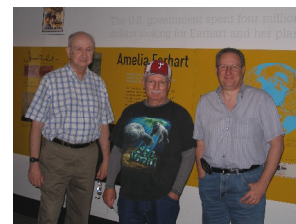


As always, the planning was superb, and we were regaled with food, drink, and door prizes. There were on-board movies for the trip home.

Some took time in the morning for the Congressional Visitors Center before the afternoon tours started up.

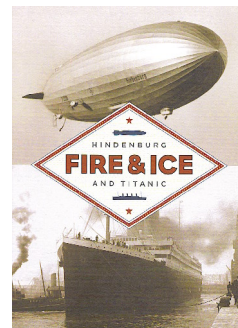


Above, Bettina Heffner and Barbara Brown chat by a display in the hall. There were items at the NPM for everyone, collectors and non-collectors alike.



Above are (L→R) Dave Hunt, Al Schwartz, and Mike Bach.

An excellent exhibit was that entitled **Fire & Ice**, about the Hindenburg and Titanic tragedies. The stories were in parallel from construction to peril.





Miscellaneous Club Notes: Programs/Hosts & Shows

2013-14 Programs and Hosts

9 October: Topical Study: Stained Glass on Stamps. Dave Hunt, Dennis Shumaker, Host.

13 November: One-Page Exhibits. All PSLC members are invited to participate with one or more exhibit pages. Bill Snyder, Host.

11 December: 75th Anniversary Celebration-6 pm.

2014 Programs

8 January: Club Auction. Len Kasper, Host.

12 February: APS Video: Canal Zone Gems.

12 March: The Westtown Locals. Bill Schultz.

9 April: 1.) The Patriot Postal Cards of the 1970-1980s. John Brownell. 2.) Lancopex advert card preparation for show.

11 May: Club Auction.

11 June: TBA.

9 July: U.S. International Philatelic Expo Stamps, Covers, Labels & More, Paul Petersen.

13 August: Club Picnic.

10 September: Club Auction.

8 October: Great Britain Inland Airmail Service: 1935-1937. Mike Bach.

2013 Local Shows

Some Sundays Stamp Bourse: Farm & Home Center, 1383 Arcadia Dr. 27 Oct, 1 Dec. Kevin Kellman (K²), Manager; 301-371-4558.

Reading Stamp Show: Saturday, 2 November at the Leesport Auction Pavilion on Rt. 61 just north of Leesport. Let's all go and show our support for our RSCC friends.

The Inverted Jenny: These attractive \$2 stamps are available at our club post office on Rohrerstown Road in the Regency Square Shopping Center.

Specialty Tours for PSLC at the NPM

Mike Bach worked with Congressman Joe Pitts to arrange our specialized tours. Joe relayed his regrets that he could not join us that day, but one has to think that the congressional budget battle for 1 Oct. may have had something to do with this.

Conservator Linda Edquist led us to her area where philatelic materials are repaired and/or readied for long term storage or museum display. She has specialists in paper, adhesives, storage, and other archival procedures. She said that all repairs are done in the reversible process. This means that nothing is permanent. In fifty years future conservators may find that there is a better way to do something. Then they can undo what was repaired in 2013 and start over. A interesting item was the anthrax letter & cover sent to Tom Daschle following the 9-11 terrorism events. This will be in a forthcoming exhibit.

Registrar D. Ted Wilson took us inside the vault, described its history, and showed us a sampling of its contents. While there is outstanding material on display at NPM, not all of it can be shown simultaneously. This is where the vault comes in. It also contains materials that are not easily displayed, such as an album or very large sheet. By appointment, the public may request to view material from the vault, and it will be brought to them for study in the library.

An interesting item was one of two intact 1902 Teddy Roosevelt albums of all U.S. stamp essays to that date.

Another is the PMG's plate proof impression collection. There are about 40K of these unique sheets, all signed by the officials producing and approving the issues for production.

An item in the main display was a 1776 letter from PMG Ben Franklin for a mailman to present to the toll takers on the post roads in order to travel without paying a toll.

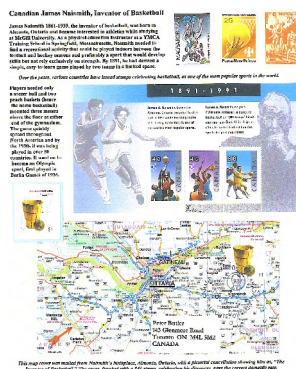
One-Page Exhibits Coming in November

It was at an elective class during the APS '11 Summer Session by Peter Butler and Dick Osman that I learned about One-Page Exhibits, *a.k.a.* One-Pagers. These are collector-created exhibits or displays of their philatelic and other related material. They are one page in length, but a page or two extra are not a problem at PSLC.

One-Pagers include competitive and non-competitive categories. This is up to the club. We will not be judging the exhibits here, but knowing the criteria for judging may help a collector to prepare a better exhibit.

Your topics? Easy! Peter and Dick started with some appealing materials that were too few in number to do much with, or others that did not fit in their larger collection. However, the items and topic were of great interest to them, and they would probably be the same to fellow

club members. As they noted, these are the items that are kept close by in an envelope or cigar box that they enjoyed perusing. So why not put them on a piece of paper and share them with the club members?



In the spring of 2012, Dick Osman visited PSLC with a PowerPoint presentation containing both his and Peter Butler's examples with a child's exhibit or two thrown in. Viewing these is one of the fastest ways to see what One-Pagers are about.

A few years ago PSLC had a

program entitled "Your Best Stuff" where collectors stood behind their albums pages and shared with others. This past June we had some "Show 'n Tell" material for our Open House for club members and guests. These were both popular meeting formats and topics.

The One-Pager is yet another means to share one's material. It goes a step further with some text that tells a story of the items or uses the items to tell a story of another topic or theme.

Circulating at club meetings is a binder with many examples of One-Page Exhibits. This is a great reference and/or guide to this exhibit format. There are also email and hard copy handouts available which will proffer additional information as needed. The One-Pager is a great way to organize your material and share with club members.



Musings: October-2013

The NPM trip from a personal perspective

Where do I even begin? What a difference a few years make! During the last trip to the National Postal Museum in 2009, I spent a few hours there and then did DC on my own to see the Woodrow Wilson Museum on S Street. This time I did not leave the museum till 5:00 pm!

The big addition to the NPM is the William Gross Stamp Gallery. Many remember that the museum proper was in the basement, and the ground floor contained a wonderful restaurant. This area now has new material that should appeal to all ages and interests, not just collectors.

What provided the extra excitement was that four days prior to our 26 September visit was the opening of the Gross Gallery, and on that date was the release of the \$2 Inverted Jenny Souvenir Sheet. Curator Mike Piazza gave us a tour of the gallery along with leftover Grand Opening Programs from the 22nd. Included were two cacheted but un-franked covers: One for the Gross Gallery and the other for Medal of Honor winner and lifelong stamp collector, Dave McNerney whose MOH and artifacts were enshrined in the museum on the 22nd.

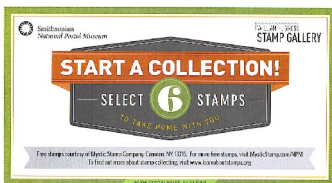
Put two and two together and most stamp collectors above room temperature would go to the philatelic center at the museum and seek first day cancels. These are usually available for 30 days after the date of issue. So many club members pur-

chased some Jennies and had the covers or postcards serviced. This was special, as the postal clerk took her time and serviced each cover/PC almost perfectly.



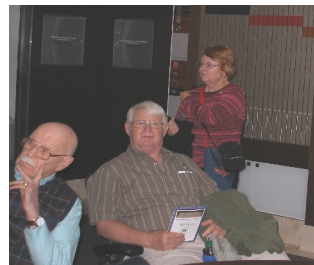
Translucent stamp images decked each window, and at night they were backlit from inside. For night-time travelers on Mass. Ave, the museum looks like a giant stamp album.

The main gallery was designed to appeal to kids thru adults with eye-catching artifacts to some interesting postal history. Exhibits are now multi-media. One of these was a "Design your own stamp" touch screen. This was on a table with two bins of stamps (with envelope) for the picking.



There was a room with pull-out shelves. These are similar to the

ones we have seen in the past, but these are new and contain dynamite stuff. Of interest, Mike added that no U.S. manufacturer would risk the custom fabrication of these, so they had to be made in Italy. Pulling them out and replacing them is like opening and shutting the doors of a vintage Lamborghini. Just exquisite. But in these shelves were more gems including two additional inverted Jennies and the famous 1¢ blue "Z-grill." I wish these were just for the picking. Mike referred to this room as the Masters degree of philately. There is a touch-screen computer to locate any stamp and a table with ergonomic chairs to encourage philatelic research. Seen below are Wm. P. Snyder and Chuck & Donna Kilgore with the pull-out shelves in the background.



There is a highly secured gallery with featured gems including, among a few others, the earliest use of the 10¢ Scott #2 on 2 July 1847. There was a cover can-

celled on the moon in 1971 and a block of inverted Jennies. Mike said that at the Smithsonian, it is the Ruby Slippers, the Spirit of St. Louis, and the Hope Diamond that attract the most visitors. He is hoping that the Inverted Jenny block will do the same for the NPM.

On the general tour Mike showed us a damaged mail box from outside the World Trade Center on 11 September 2001. There were other artifacts from the terrorism. Each tower had its own Zip Code-10047 & -48.

While the NPM is known for its U.S. holdings, its actual foreign collection is a little larger. It includes one of the world's finest collections of the Russian locals or Zemstvos. Almost 99% of the material is donated either from private individuals or from USPS.

The new addition to NPM was from donations of \$12M from William Gross and another \$6M from other sources.

The first Philatelic donation to the Smithsonian was in 1886, an almost complete sheet of confederate stamps. For provenance there is the corresponding paperwork regarding this transfer/donation. Ed. 📧



This document was created with Win2PDF available at <http://www.win2pdf.com>.
The unregistered version of Win2PDF is for evaluation or non-commercial use only.
This page will not be added after purchasing Win2PDF.