

Philatelic Society of Lancaster County



The James Buchanan Chapter (#173) of the
American Philatelic Society
Chapter 118 of the American Topical Assn.

Meeting Begins at 7:00, Wednesday, 10 September 2014

Bluebird Commons / Woodcrest Villa. Lucy Eyster, Host
Doors Open at 6:30-Come Early to Buy, Sell, and/or Trade

From the Desk of the President

I have to thank everyone who brought the delicious treats and menu items to our August picnic. It was a truly magnificent feast enjoyed by all. Special thanks to all the club members who performed the many tasks relative to the set-up, execution, and cleanup of the event. The philatelic bingo game was also great fun and was enjoyed by the twenty-eight who remained to play. For members who were unable to attend this year, we hope to see you at next year's picnic, as it is very well worth attending.

Our 2014 Fall Auction is upon us. As always it is one

of our most attended meetings. I hope you have used the past few weeks to prepare auction lots that will maintain the interest and vigorous bidding activity that has been noticeable over the past several auctions. This event gives you the opportunity to "weed out" some excess stock that has accumulated in your collections while providing the material needed by other members for their collection. The auction is on 9/10/14.

Just a reminder, there will be a meeting to update and finalize our club bylaws on Monday, 15 September at 7:00 pm at Lucy Eyster's

apartment at Woodcrest Villa. Present officers, board members, and past presidents are urged to attend as well as any club member who wishes to participate in the process.

As of this posting, Roy Baardsgen reports that we now have sufficient members signed up for the 23 October bus trip to the ASDA Stamp show in New York City. There are still five seats available. So if you are not yet signed up and would still like to go, please register your intention with Roy as soon as possible. See you at the auction.

Len

It's Fall Auction Time again...are you ready?

The club's Fall Auction is here already. It's a good time to find a new collecting interest. By law, the auction is only open to paid-up members, but if visitors sign-up for membership and pay dues, they may participate in our auctions.

Instructions: A number will be assigned to you when you arrive and register. Please place this number on all your lots. Attach an item/lot description including catalogue number, value and condition if appropriate, and minimum bid accepted. This will speed things up a great deal. • Fiscal transactions will only take place after the last item has

been sold. Further, the auction committee recommends the following: • Bring cash whenever possible to pay for the items you win, and • Keep a running total of items you have won and sold based on the prices realized. • Finally, firmly attach your sales information (lot description, cat. value, min. bid etc.) to the item, then you'll be correctly credited with the sale.

Bidding rules remain the same as previous auctions. • The minimum bid is \$1.00. • The minimum bidding increment is 50¢. • Each club member is limited to 10 lots. • You may also donate items



for the auction, and have the realization go to PSLC. All donated items are greatly appreciated and benefit all our club programs.

Volume 77, No. 9

September, 2014

Highlights

- Fall Auction
- Building a Collection
- Spanish War Stamps
- Club Picnic Snaps
- Book Review
- Club Notes
- Treasurer's Report
- Musings: Subtopicals

VISITORS ARE ALWAYS WELCOME

PSLC Meets the 2nd Wednesday of the month (except August) at The Bluebird Commons in Woodcrest Villa, 2001 Harrisburg Ave, Lancaster, PA 17601 at 7:00 PM. Dues are \$10.00. For club info, call Lucy Eyster: 717.735-2586

Website: lcps-stamps.net

President & Publicity:

Len Kasper, 717.723.1864
hotrodparts33@aol.com

Vice President:

Bill Greiner III,
sunfighter@verizon.net

Past President:

Robert D. Noble,
rdnoble@windstream.net

Secretary:

Joy Bouchard,
jib672@yahoo.com

Treasurer:

Lou DiFelice,
loudifelice@gmail.com

Membership & ATA Representative :

Lucy Eyster,
lucyeyster@yahoo.com

Newsletter Editor, Programs, & APS Rep:

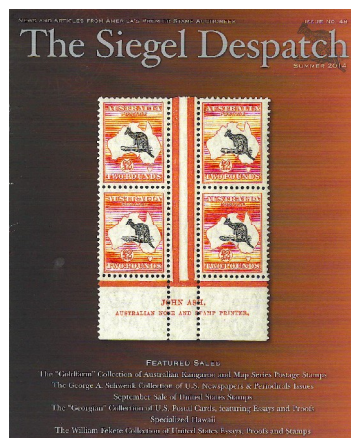
Paul Petersen, 717.299.5640
pcpetersen@comcast.net



What to Collect?

Some PSLC members have curbed their collecting activities. A few have liquidated their holdings to avoid a philatelic estate, while some others aren't sure what to collect next. Let's explore this.

Recently Dick Collberg suggested an abstract for this newsletter based on the insightful commentary by auctioneer Scott Trepel in the Robert A. Siegel's Summer Catalog-'14 (*The Siegel Dispatch*, pg. 2). It is entitled "What to Collect?"



Trepel discusses our passion and practicality as we approach a new collecting area. There is the joy of our first acquisitions followed by the satisfaction finding scarcer items.

But Trepel frequently hears collectors lamenting about where to go next. While budget and liquidity are important issues, he asks several probing questions that may help guide the collector's direction. Check out these questions below:

- Do you like to collect stamps vs. covers vs. essays & proofs?
- Do you prefer a structured album with catalog?
- Given a specified dollar amount would you buy three fine-very fine condition items or one superb item?
- Do you like postal history and conducting research?
- Do you collect only in the English language?
- Do you prefer 19th century classics or the 20th century?
- What were the last three books you've read?

The Stamps of the Spanish Civil War

A collecting challenge: Part-One...Ed

1936-1939 was a terrible period in Spanish history with its Civil War. The Republicans deposed the monarchy in 1931, as economic times were hard. A series of failed, inefficient, and corrupt Republican governments followed. Despite this, the far left won a large majority in the 1936 election, and a radical agenda was underway to even the gap between rich and poor. Republicans were also known as the Communists, the Socialists, and the Anarchists. Their anti-fascist symbols (*i.e.* a fist) were common on their stamps



As the new Republican agenda came into play, many in the center and right of Spain grew concerned. Led by high ranking military officers, they formed the Nationalists, also known as the rebels and/or Fascists. General Francisco Franco headed the Nationalists

What about the stamps? There are many hundreds of them, and they were printed by both sides in the war as authorized by local leaders, both civil and military. The first purpose of these stamps was propaganda, and the second was fundraising for a variety of causes. These stamps are not listed in Scott's, and they are often referred to as tax or obligatory stamps, as postal customers were "obliged" to use them on outgoing mail in addition to regular Spanish stamps. They are also known as locals, charity stamps, and *PRO*-stamps.

"*PRO* is the Latin "for the benefit of." Both sides used this on their stamps, and it is common wording on many issues to see *Pro Guerra*, or "For the benefit of the war."



Covers with war stamps are not overly common. There are many extant covers with only Spanish franking. Covers from the larger cities such as Madrid, Valencia and Barcelona are more common than those from the smaller towns & cities. Forming a complete collection is a challenge, the decentralization of the printing being one factor for varieties.

Opinions are consistent that many stamps were marketed to the philatelic world, as this decade was the golden age in worldwide stamp collecting.

While information on catalog and reference sources will appear next month in greater detail, I will posit that there is good reference material online. I found an auction and sales site for this material: delcampe.net. This helped me identify some of my 47 stamps. I also viewed many more that I do not have. Prices range from fifty cents up to \$25 or more (much more for the scarcer issues). But overall, most are quite common and found in Spanish lots and in Cinderella sales albums.

There is some consensus that there are more mint tax stamps than used or on cover. Consider the stamps of Denia, that

follow. These are crisp, high quality, die cut stamps on paper that is almost card stock. These were not inexpensive to produce, yet they are common. Did these go into dealer's stock? ↓

In Part-Two of this topic next month (October) I will identify the ways in which Republican & National stamps can be differentiated from one another. Ed.





Miscellaneous Club Notes: Programs/Hosts and Shows

2014 Programs

10 September: Fall Auction. Lucy Eyster, Host

8 October: Great Britain Inland Airmail Service: 1935-1937. Mike Bach. Fred Sargent and Fred Mackey, Hosts

12 November: Open House and One-Page Exhibits. Len Kasper and Paul Petersen. Bob Paire, Host

10 December: Dinner

2015 Programs

14 January: Winter Auction. Bill Greiner, Host

11 February: APS Video-*The doctoring of postage stamps: Philatelists beware.* GS Joseph

11 March: 1.) Local Stamps of Rattlesnake Island, Bill Schultz. 2.) Lancopex Advert Card Prep. All hands

8 April: A survey of Confederate Postal History. Patricia Kaufmann

13 May: The U.S. International Shows: Stamps, Covers, Labels, and History. Paul Petersen

10 June: PSLC Spring Auction

8 July: Express Companies of Mexico between 1855-1907. Dick Colberg

12 August: Picnic

9 September: PSLC Auction

14 Oct: Great Britain's Line Engraved Stamps. David Hunt

11 Nov: Club Member 1-Page Exhibits and Open House. Len Kasper & Paul Petersen

9 December: Dinner

2014 Related Shows

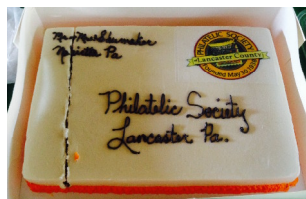
ASDA Stamp Show: 23-27 October, New York City. (Note: Club 1-day bus trip to this show is on Thursday, 23 October.)

Some Sundays Stamp Bourse: Farm & Home Center, Lancaster. 5 Oct., 7 December. Kevin Kellman (K²), Manager, 301-371-4558



The 2014 Picnic is Another Success

Like last year, the weather and Millersville Memorial Park did not let us down for our 13 August 2014 picnic.



Lucy and Dennis Shumaker continued the trend with another cake (above↑), this one with the club seal on a cover.



As club VP (AKA Assistant Captain of the Ship), ↑ Bill Greiner ate last. He also supervised Mike Shirley and

Paul Petersen (below) who again were called to cook. In response to the many questions about branding, the burgers were Bubba Burgers™, and the dogs were Ballpark Franks™. These items were as popular as last year's brand, Kirkland™, from Costco.



Attendance this year was 40 members and guests, and 28 remained to play Presidential Bingo hosted by Joy & Dennis Bouchard. President Len Kasper (right→) was the em-



cee, while Lucy Eyster (above) coordinated the food line. There were many hands to set up and break down the picnic. Many thanks to Doug Milligan for the digital snaps



PO Box 6053

Rohrerstown, PA

From our club mailbox Lou DiFelice received a detailed description of the book that follows, and he thought it might be of interest to club members. This information will also be available at the September meeting.

The Realism and Symbolism of Postage Stamps by DT Kreutter is an e-book available through Amazon.com.



Based on the materials submitted by the author, this book seems to be a guide through his personal collections, holdings that are quite varied. The book contains over 1300 color images of stamps from over 190 countries. Each is thoroughly discussed, as Kreutter's approach is to show how wonderful collections can be designed no matter the budget. Chapters 1 & 2 may be reviewed for free at Amazon.com.

From the Treasury

Opening: \$4,456.62 (1 July)

Income: \$25.00

Expenses: \$187.82

Closing: \$4,293.80 (31 July)

3-CDs valued at \$6,889.02

Because of the picnic in August when no business meeting was conducted, there are no minutes to report in this issue. Following the business issues in the September meeting, the minutes will be resumed in the October edition.



Musings: September-2014

Sub-topical collecting...

Organization: On occasion I have written about the organization or taxonomy of a collection. In other words, what goes where? And what happens when the number of related themes and topics of a collection start to grow like mycelium? I collect **maps on stamps**, and below is an example, Australia-777. This is a **map-on-stamp** stamp!



Stamp on stamps (SOS) is another favorite topical, and it has spawned many connected "Sub-topical" collections with related themes.

On UK-1062 ↓ is the topic of **postal transportation**. There are many others with trains, planes, riders, etc.



Stamp collecting is a popular collecting area seen in the next column. There are many with the stamp and magnifying glass, but this one from Dominica (955) shows many famil-

iar tools and references of collecting. This one also doubles in another sub-topical of stamps that promote **stamp shows**, Ameripex-'86 (See upper right).



San Marino-266 is but one example that commemorates a **stamp issue**, in this case U.S. No.1 on its 100th anniversary.



Columbia-611 commemorates the **Universal Postal Union**.

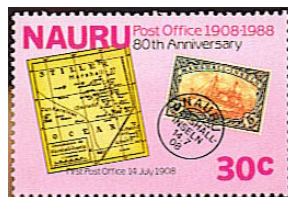


This Columbia stamp doubles as **letters/mail on stamps**, another topical collecting area.

The stamp below depicts **mail/post boxes on stamps**, this one from Germany (1153).



And just to mix it up a bit, how about **stamps & maps on stamps** as seen in this Nauru stamp issue of 1988 (347).



As you can see, the topic of SOS issues can branch into almost anything postal, and with an enquiring mind you can throw in some maps! Some collectors of SOS pair the original stamp with its image on the SOS. Perhaps this is a variation of **joint issue collecting**!



I especially like **stamp shows on stamps**. There are a variety of kinds. The stamp above is Czechoslovakia C63 of 1967 which commemorates SIPEX-1966 in Washington. Concurrently, there's a tab promoting their 1968 Int'l Show to come. Below is a Cinderella promoting the 1897 London Expo. Ed.



This document was created with Win2PDF available at <http://www.win2pdf.com>.
The unregistered version of Win2PDF is for evaluation or non-commercial use only.
This page will not be added after purchasing Win2PDF.