

Philatelic Society of Lancaster County



The James Buchanan Chapter (#173) of the
American Philatelic Society
Chapter 118 of the American Topical Assn.

Open House Begins at 7:00, Wed., 12 November 2014

Bluebird Commons / Woodcrest Villa. Bob Paire, Host

Doors Open at 6:30-Come Early to Buy, Sell, and/or Trade

From the Desk of the President

The November meeting will be my last official meeting before turning over the gavel to Bill at our December Dinner. I just wanted to take an opportunity to inform all members how honored I was to be your President for 2014. It has truly been a privilege, and I thank you for your support. This month is our "Open House" meeting. Please bring examples of your collecting interests for our guests to view. And don't forget your 1-Page Exhibits. A lot of publicity is being circulated for the event, so we can only hope that it generates some good outside interest.

With the fall leaves dropping and outdoor activities decreasing, I find myself doing more reading when I'm not working on my stamps. I like to read books that in-

crease my knowledge of stamp themes and history of the countries that I collect.

My examples follow. These books rate very high on my list of best reading material. This year Canada celebrates the 100 year anniversary of the tragic sinking of the Canadian liner, *Empress of Ireland* with a very attractive commemorative stamp. The most compelling accounting of this tragedy is Kevin McMurry's book "Dark Descent."

With our NYC bus trip fresh in mind is Arthur Weingarten's "The Sky is Falling" with its spellbinding coverage of the U.S. Army B-25 bomber crash into the Empire State Building in 1945.

For those who collect stamps of Albania, I found a book with both great historical

information and an incredible story of American medical personnel who crash landed in 1943 behind German lines in Albania. It is "Savage Will" by Timothy M. Gay.

Peter Neumann's book, "The Black March" is a German Waffen SS soldier's perspective of his graphic experiences in battle throughout WWII. All of these books are available through eBay and Amazon if anyone would like some good cold weather reading.

On 17 November at 7 pm we will be having a Lan-copex planning meeting at Lucy's. All wishing to attend should contact Lucy or me. In the interim, I hope to see everyone at our 2014 Open House. **Len**



Annual Open House

This is our best club meeting of the year. There will be exhibits on the wall, albums and stock pages on display, items for sale or trade, special snacks, a philatelic presentation by Dick Colberg on **Commercial Overprints on Great Britain's Stamps**, and only a very short business meeting.

Right now five members have signed up for a total of seven 1-Page exhibits. These include

Lucy Eyster, RD Noble, Hal Klein, Dennis Shumaker, and Diane Meek. There will be opportunity for exhibitors to discuss their 1-Pagers to the audience. But we have room for plenty more. Contact Paul.

Besides exhibits, your albums are welcome. As such, there will be table space for you to display your items and stand nearby and discuss your material with those interested.



Have a blessed Thanksgiving celebration this year.

Volume 77, No. 11

November, 2014

Highlights

- 2014 Open House
- 1-Page Exhibits
- *Ave et Vale*
- Reading Stamp Show
- Member Challenge
- Doug Milliken Bio
- New York Bus Trip
- Event Covers & More

VISITORS ARE ALWAYS WELCOME

PSLC Meets the 2nd Wednesday of the month (except August) at The Bluebird Commons in Woodcrest Villa, 2001 Harrisburg Ave, Lancaster, PA 17601 at 7:00 PM. Dues are \$10.00. For club info, call Lucy Eyster: 717.735-2586

Website: lcps-stamps.net

President & Publicity:

Len Kasper, 717.723.1864
hotrodparts33@aol.com

Vice President:

Bill Greiner III,
sunfighter@verizon.net

Past President:

Robert D. Noble,
rdnoble@windstream.net

Secretary:

Joy Bouchard,
jib672@yahoo.com

Treasurer:

Lou DiFelice,
loudifelice@gmail.com

Membership & ATA Representative :

Lucy Eyster,
lucyeyster@yahoo.com

Newsletter Editor, Programs, & APS Rep:

Paul Petersen, 717.299.5640
pcpetersen@comcast.net



November Bio

Doug Milliken

When it comes to collecting, Doug is a Renaissance man. Starting at age ten with a school stamp club, he began the journey and added coins to the mix. As an adult he pursued post cards. His most formal philatelic training was as a member of a stamp club while in college. There the members were willing to mentor young collectors. In addition to his U.S., a member of the club introduced him to stamps of the Soviet Union which were plentiful and well valued. He has a good set of U.N. but discontinued collecting them given their sharp decline in value.

Doug's primary area of collecting at this time is U.S. commemoratives, though he has a Scott's National Album and is adding definitives. Another album contains the stamps from an accumulation of family letters from the 1920s-1950s.

Born in California, Doug earned a Bachelor's and a Master's degree in industrial engineering from Cal Poly and USC, and he worked in this area his entire career. One of his last jobs, Harley Davidson in York, PA, brought him to the East Coast where he then retired to the Lancaster area.

He joined PSLC in 2010 for the educational programs, newsletters, auctions, and bus trips. Even more, he has enjoyed serving PSLC at Lancopex and NTSS where he got to know many members. He learned of our club from several club members who participate in the coin and post card clubs. Doug currently serves as the president of the Lancaster Post Card Club. Like many of our members, he's looking forward to the stamp club Christmas Party in December and future trips to the U.S. Postal Museum in Washington.

Doug's collections and accumulations have grown over time. While he has most of this material stored securely, he can access this easily to peruse. His current goal is to organize this all for easy disposition at a later date when necessary.

September Minutes and Treasury

Paul Petersen and Lou DiFelice

Opening: Bill Greiner opened the meeting at 7:05 P.M.

Minutes: The Minutes and Treasurer's Report as presented in the October 2014 Newsletter were approved unanimously by voice vote.

Membership: Lucy Eyster introduced new member Kerry Wetterstrom, a nearly lifelong collector specializing in Sweden and Hawaii. He also collects coins. Attendance at this meeting was 30.

2015 Dues: Lucy will be collecting dues tonight and next month. Because of her role with the Christmas party, she will not be collecting dues in December. There will also be a reminder in the next newsletters with a short form to complete with the submission of dues. Dues can be submitted in person or via snail mail.

Drawing: Greg Macaluso and Lesley Botte were the winners of the October drawings.

Old Business:

Club Bus Trip: Roy Baardsen updated members on the

23 October bus trip. Some seats remain. The bus will leave the Garden Café at 7:00 am and then pick up the Reading area members at 7:30 at Lowes in Shillington. The bus will depart NYC at 6:00 pm with a no-host dinner stop along I-78 in NJ.

2015 Officer Nominations: Bill Greiner solicited completed ballot recommendations from those who did not have a chance to submit a name for VP last month.

By-Laws: Bill and Paul gave an overview of the changes to the by-laws. Paul plans to have draft digital and hard copies for membership by the November meeting.

Reading Stamp Show Transportation: Ride-Sharing Czar Paul Petersen has a full car, and Len Kasper has room for six more for the Saturday, 1 November Reading Stamp Show. Please call Len if you would like a ride.

Open House and 1-Page Exhibits: Paul passed around a sign-up sheet for those in-

tending to enter an exhibit for the November Open House.

Area Stamp Shows: Lesley Botte announced the October/November local stamp shows.

New Business:

Dinner: Lucy announced that this annual December event for members and their guests will be held 10 December at 6:00 (Doors will be open at 5:30 pm) at the Garden Café. The menu has been set with three entrées and will be even better than last year. There will be entertainment and two grab-bag gift exchanges, one for philatelic items and another for non-philatelic items. Members and guests may participate in either or both (or none at all!). Gift values should be at or above the \$6 range. Dinner cost will be \$10/person to be paid at the door.

Treasury Report

Opening: \$4,082.16 (1 Sep)

Income: \$243.00

Expenses: \$367.40

Closing: \$3,957.76 (30 Sep)

3-CDs valued at \$6,905.48

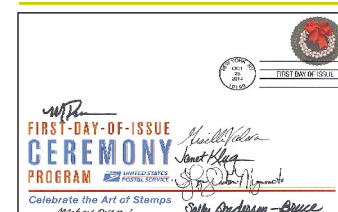
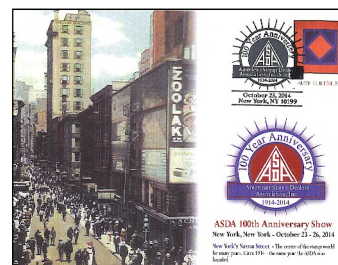
The ASDA Show & 100th Anniversary in NYC

Most of us look forward to our bus trip all year long. After all, we just sit back and let the driver do the rest. But it is not as easy as this. Trekmeister Roy Baardsen did a lot of up front work, and he credits much of what got done to Mike Matus, Mike Bach, and Pete Baney. These guys take their travel seriously, and more than securing the bus and all, they provided entertainment with drinks and snacks for a bus full of folks.

The hospitality ranged from a snack bag with goodies and a

small gift, drawings for wonderful prizes (for example, a crock pot, a portable air compressor, a wine preserver, and a coin sorter, just to start), a trivia game, and a recently issued DVD showing. Wow!

Our 23 October trip was to the Hilton in NYC for the ASDA Stamp Show and 100th Anniversary Celebration. In addition to many dealers, there were 256 frames of outstanding stamps and covers. There were First Day Ceremonies for U.S., U.N., and Granada. Plenty of souvenirs.





Miscellaneous Club Notes: Programs/Hosts and Shows

2014 Programs

12 November: Open House, One-Page Exhibits, and Your Best Stuff Extravaganza. Len Kasper. Bob Paire, Host

10 December: Dinner

2015 Programs

14 January: PSLC Winter Auction. Bill Greiner, Host

11 February: APS Video-*The doctoring of postage stamps: Philatelists beware.* GS Joseph

11 March: 1.) Local Stamps of Rattlesnake Island, Bill Schultz. 2.) Lancopex Advert Card Prep. All hands

8 April: A Survey of Confederate Postal History. Patricia Kaufmann

13 May: The U.S. International Shows: Stamps, Covers, Labels, and History. Paul Petersen

10 June: PSLC Spring Auction

8 July: Express Companies of Mexico between 1855-1907. Dick Colberg

12 August: Summer Picnic

9 September: Fall Auction

14 October: Great Britain's Line Engraved Stamps. David Hunt

11 November: Club Member 1-Page Exhibits and Open House. Len Kasper & Paul Petersen

9 December: Dinner

2014-15 Related Shows

Some Sundays Stamp Bourse: 7 December 2014, 15 February 2015, 7 or 21 June (TBA), 16 August, 20 December. Farm & Home Center, Lancaster. Kevin Kellman (K²), Manager, 301-371-4558.

York Stamp Show: F/S, 23-24 January 2015 in Agricultural Hall, York Fair Grounds.

Member Challenge

Please be thinking of contributing your opinion for the **Member Challenge** in the January issue. The philatelic press is replete with articles about recruitment. A recurring theme is this: Should the hobby be recruiting youth or adults? Certainly, we need both, but for this challenge, pick one side, gird your loins, and tell Ed what you think and why.

Ave et Vale

With sadness we learned that stamp dealer, speaker, and friend, Bob Brown of Pottstown passed away early on 5 November 2014 following an acute lung illness paralleling many weeks of hospitalization for testing. PSLC members will remember Bob and Barb Brown's presentation last June on the Rogue River Mailboat which began in 1895 and has delivered mail to rural OR areas ever since.

PSLC Notices

Lancopex Meeting: This will be held 17 November at Lucy Eyster's at 7:00 pm. Please confirm with her if you will be attending: 725-2586. This is for all who are involved with producing the show and any other members who would like to help with the show on 24-25 April 2015.

Dues: Renewal form is below. Please pay at the November meeting if possible. Dues will not be collected at the Dinner in December.

By-laws: Drafts will be available in hard copy and digital formats on 12 November. Discussion and a vote will take place on 14 January.

2015 Officers: Nominations will be announced at the November meeting, and the vote will take place at a subsequent club business meeting.



Reading Stamp Club Show

While we just had a club trip to the large ASDA stamp show in NYC the previous week, members of PSLC still packed several cars to attend the Reading show in Leesport, PA on 1 November. Dealers were numerous and ready to deal, and the food was great as it always is.

There was sad news when it was announced at the show that long-time dealer Bob Brown was in the hospital, gravely ill and that our prayers were most welcome. It was at this show last year that Bob and Barb formally retired their stamp business.



In the photo above are the

show's usual suspects: Standing (L→R) Roy K. Baardsen, the Leesport Postmaster, and Pete Baney. Seated are Mike Bach and Mike Matus. These club members have been organizing this annual show for many years. Beyond this, they are members of the Lancaster club and have helped at Lancopex and NTSS.



New to Reading this year is Dutch Country Auctions of Wilmington, DE, represented by owner, Russ Eggert who will be present at regional shows, providing an opportunity for a seller to drop off material for auction or consignment at a variety of convenient locations.

✂
Date: _____

Please clip this notice, complete it, and turn in with \$10 to Lucy Eyster at the December Dinner. You may also mail it to Lucy at 2001 Harrisburg Pk., B-503, Lancaster, PA 17601. Call 735-2586 with questions.

Name: _____ Phone: _____

Email Address: _____

ATA Member ☐ APS Member ☐

Please check the APS/ATA box (s) above if you are a paid-up member.



Musings: November-2014

Collecting Event Covers...

We are more than just stamps! Covers and postal history come to mind as solid adjuncts to collecting stamps in albums whether by country or by topic or theme.

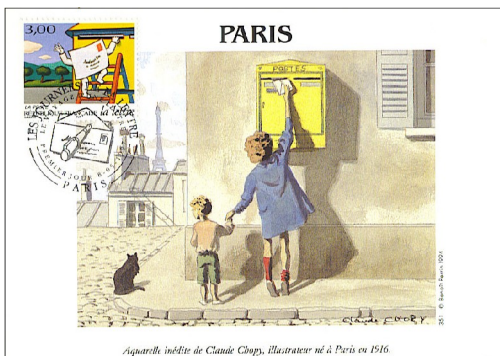
Then there are the postal related items such as souvenir cards, souvenir pages, commemorative panels, and first day covers (FDCs). There is a lot of this type of material listed way in the back of the book of *Scott's Specialized Catalogue of U.S. Stamps and Covers*. These tend to be "official" items of the US-POD/USPS, and they have been produced over the years. There are also the related FDC ceremony items such as programs, notices, invitations, and brochures.

Event covers are souvenir items (postcards or covers) which have both postal and philatelic origins. They are common at stamp shows and historical events. The postal aspect comes from the participation of an official postal agency who works with a philatelic or other organization to design, fabricate, and apply an official cancellation for the item. The philatelic component comes from the fact that these items are at least in part, collector or hobby inspired. The collectors help to design original postcards or choose existing ones for franking and canceling. They are most collectible, and prices are reasonable.

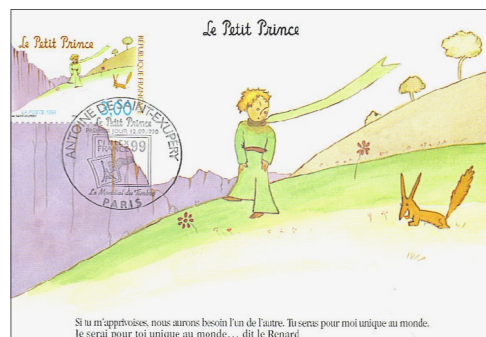
The best summary is that many of these cards are philatelically inspired with postal cooperation. Ed.



The postcard above was produced by USPS to commemorate the '89 World Expo held in Washington. It features a specialty cancelled Scott 2810.



This card is one of a set of six French stamps promoting letter writing entitled "Journey of a Letter." The cancel is dated 8 August 1997 and notes **Premier Jour** (First Day) while *Scott's* denotes a release date of 2 May 1997. The postcard contains an illustration by Claude Chopy, born in Paris in 1916.



This postcard and stamp commemorate the author, illustrator, and pilot Antoine De Saint Exupéry's 1943 novella *The Little Prince*. This was voted the most popular book in France. The 1999 French World Expo is noted in the cancellation. Some say that the book is an existential autobiography of the author's experience after crash-landing in the Sahara during an air race.



The above event cover was just sent to Ed by Dick Colberg marking the 25-26 October stamp show that he attended in Uzès in Southern France. The personalized stamp matches the illustrated postcard of the old post office in Uzès.



Philatelic Society of Lancaster County
PO Box 6053
Lancaster, PA 17607-6053