

# Philatelic Society of Lancaster County



The James Buchanan Chapter (#173) of the  
American Philatelic Society  
Chapter 118 of the American Topical Assn.

## Meeting Begins at 7:00, Wed., 13 January 2016

Bluebird Commons / Woodcrest Villa. Hal Klein, Host

Doors Open at 6:30-Come Early to Buy, Sell, and/or Trade

## The President's Column

HAPPY, HEALTHY NEW YEAR TO ALL! The greeting cards have been mailed, and the bows, ribbons, and wrapping paper have been stored for another year. And found during this year's wrapping marathon was the scissors borrowed from the stamp den last year; it was in my wife's bow box-hmmm. Now, stamps and stamp programs will take center stage.

This will be an exciting year for the club. During the last two months Daisy Detweiler has gathered the final information required to launch a club Boy Scout Merit Badge Program. Dennis Shumaker, PSLC Attorney, has reviewed the program for liability issues. The next step is to volunteer to become Merit Badge Counselors and complete the necessary application forms.

LANCOPPEX 2016 is on 29-30 April. Please take time now before the January meeting to

plan some time in your calendars to volunteer a few hours at the show. We really need your help in the following areas: ·Set-up (Thursday Night), ·Break-down (Sunday afternoon), ·Registration Table, ·Cachet Table, ·Boy Scout Table (if approved), Exhibit set-up, and the ·Collecting 101 Table. Some of these tables may be combined.

The January 2016 Club meeting features the first PSLC auction of the New Year. After the November auction, a question was raised, "How can we get better auction prices for members?" Bob Noble and Woody Hann have done fantastic jobs as auctioneers, but many times they have problems identifying material on the spot when it is not well described. A little guidance from lot owners would help including information about the lot, value, condition, catalogue value, as appropriate. Can we solve this problem?

The Auction Committee went to a few other Clubs to see how they handled this problem, and they all gave us the same answer-They ask members to submit a brief "Auction Lot Description Form" with each entry. It is short, simple, and easy to use. This is designed to help the seller make more money and to let the buyer know exactly what is being auctioned. A sample form will be sent in advance via email to print out, and paper forms will be available at the January and future meetings.

The World Stamp Show NY-2016 is scheduled for Memorial Day weekend, exactly one month after LANCOPEX-16. Roy will be bringing this up for discussion. Right now there seems to be support for the Thursday of that week, 2 June. Have a happy and healthy New Year to you and your families and friends. *Hal*

Volume 79, No. 1

January, 2016

### Highlights

- 2015-16 Officers
- "Dinner" Review
- A Kissing Card
- Auction Instructions
- Musings: Your Niche

### VISITORS ARE ALWAYS WELCOME

PSLC Meets the 2nd Wednesday of the month (except August) at The Bluebird Commons in Woodcrest Villa, 2001 Harrisburg Ave, Lancaster, PA 17601 at 7:00 PM. Dues are \$10.00. For club info, call Lucy Eyster: 717.735-2586

Website: lcps-stamps.net

#### President :

Hal Klein, 717-272-5234  
halklein@comcast.net

#### 1<sup>st</sup> Vice President:

Doug Milliken, 717-330-4062  
ldmilliken@me.com

#### 2<sup>nd</sup> Vice President:

TBA

#### Past President :

Bill Greiner III, 717-394-0879  
sunfighter@verizon.net

#### Secretary:

Diane Meek, 717-396-9262  
jdimeek111@gmail.com

#### Treasurer:

Bill Snyder, 717-464-6554  
wsnyder655@gmail.com

#### Publicity:

Len Kasper, 717-723-1864  
hotrodparts33@aol.com

#### Membership & ATA Representative :

Lucy Eyster,  
lucyeyster@yahoo.com

Newsletter Editor, Programs, & APS Rep:  
Paul Petersen, 717-299-5640  
pcpetersen@comcast.net

## Auction

The January auction is here, a time to buy, and time to sell. And remember the old adage when getting rid of stuff: "A successful auction is as good as a fire." Please use auction forms coming your way. See page-2 for details.

## Coffee

There will be a short information session and discussion about the availability of having coffee (regular and decaf) at club meetings. For this to happen, help is needed. Your input regarding this issue will be valued.

## Lancopex

Lancopex is coming on 29-30 April 2016. There is always a lot to do, so a planning meeting will be scheduled at the January meeting. Sign-ups for the show will be early in the spring. But save the date!



## Officer Exchange

After updating our bylaws in 2015, leadership conceded at the November meeting that it was time to hold elections and operate by our "Constitution." Joy Bouchard has served seven years as PSLC Secretary, and Lou DiFelice served as Treasurer for five years, both serving well more than the two-term limit. All were pleased with their service, and both would have served again, but a club only grows when every member has a stake in the organization or skin in the game.

Being a Board member and/or officer is part of any organization's succession plan to becoming the club President. We are fortunate that our officers and board have all come to PSLC with outside leadership and expertise that is needed for us to remain a very successful stamp club.



**Outgoing Officers:** Lou DiFelice, Treasurer (Second from left); Joy Bouchard, Sect'y (center); and Bill Greiner, President hold their Certificates of Commendation and gift cards. They are flanked by members of the Dinner Committee: Lucy Eyster (far left) with Sarah Mylin and Bettina Heffner on the far right.



**Incoming Officers:** Left to right: Wm. P. Snyder, Treasurer; Diane Meek, Sect'y; and Doug Milliken, Vice President. Rising President Hal Klein was not available for the snap.

## December Dinner in Review

The Dinner Committee considered the 2015 event to be a success all around, especially with a record 58 participants, many who consider this one of the best culinary events of the season. One of the specialties, Chicken Elaine was named after the new caterer and her secret recipe. The philatelic and non-philatelic gift exchanges came with a few new twists and were popular.



The entertainment this year was provided by the PSLC Players & Co. in a featured presentation entitled "Getting to know you."

It all began with **Lucy and Dennis Shumaker** and their hobby of rocks & minerals with a specialty in fossil study. They had some wonderful items to pass around for show 'n tell, and they ended with a gift of a Megalodon shark tooth (Miocene period) bedecked in red and green ribbons for each participant.

**Alice and John Ahlfeld** discussed their American pattern glass of the late 19th and early 20th century and how over the last fifty years their collecting

hobby turned into a small business with wonderful buying and selling trips supported by their full garage(↓).



**Joy and Dennis Bouchard** talked of a variety of their other interests including sewing, gardening, church activities, genealogy, Kiwanis, and Hershey chocolate-of course!

**Doug Milliken** discussed his postcard hobby and remarked that with such a wide catchment of aging collectors in Lancaster County, there are many bargains to be found in local markets, shows, and estate sales.

**Sarah Mylin** admitted to being a collecting junkie (*Ed's comment: Aren't we all fanatic collectors of one interest or another?*) of many items with angels and Cat's Meow™ houses at the top of her list. With the Cat's Meow brand of wooden structures, she specializes in houses of Lancaster County with a few outlier favorites such as the Watt & Shand Building at Penn Square in town and the Star Barn in Dauphin County.

**Paul Petersen** described that when discussing his upcoming retirement with Al Schaub a few years, Al recommended that on his first day of retirement he should head to the gym instead of the office. This worked for Al, and Paul has been at it since the to help remain above ground.

**Mike Matus** discussed a variety of his collecting interests including Western Ukraine stamps and postal history, military medals, the short-lived monthly comic book about stamp collecting, and his son's GI Joe collection.

**Bettina Heffner** started in August to make the place setting favors for the evening's guests. She briefly discussed the process, and offered a handout with the precise details for fabricating these wonderful little boxes, offering to remain after the dinner to demonstrate the process.

**Lucy Eyster** talked about the Christmas sugar plums that she has been making to place in the boxes that Bettina made for each place setting.



After the Dinner: Almost all have left, but Lou DiFelice remains (center) for instruction on sugar plums by Lucy Eyster (right) and on box construction by Bettina Heffner (left).

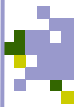
## Winter Auction Instructions

At last, the Winter Auction, an event everyone has been waiting for. Let's make it a good one. By statute, the auction is only open to paid-up members, but if visitors sign up for membership and pay dues, they may participate at the time. **Instructions:** A number

will be assigned to you when you arrive and register. • Please place this number on all your lots. • Firmly attach one of the new Auction Lot Description Forms on each lot to be correctly credited with the sale. This information will speed the auction process.

• Fiscal transactions will only take place after the last item has been sold. Further, the auction committee recommends the following: • Bring cash whenever possible to pay for the items you win, • Keep a running total of items you have won and sold based on the prices realized. →





# The Pennsylvania Philatelist

## Hal Klein

My fascination about the 1893 item shown below started over fifty years ago when I first began collecting U.S. Postal Stationary. As I normally do when starting a new area of collecting, I begin the acquisition phase by purchasing a few large lots of mint and used general material to use for study, review, and dissection coupled with a few reference books. Well, lurking in a purchased lot of postal cards was an infamous Kissinger's Philatelic Postal Card. When I came across this card, I thought I had found a U.S. rarity.

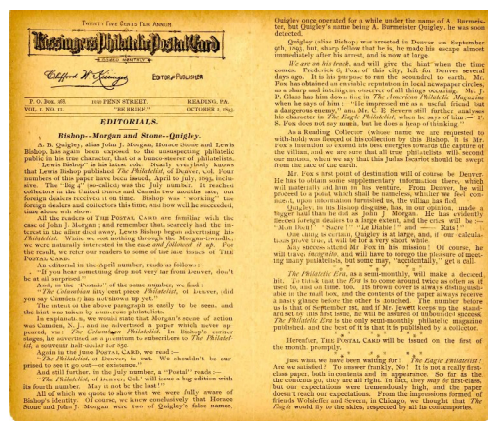
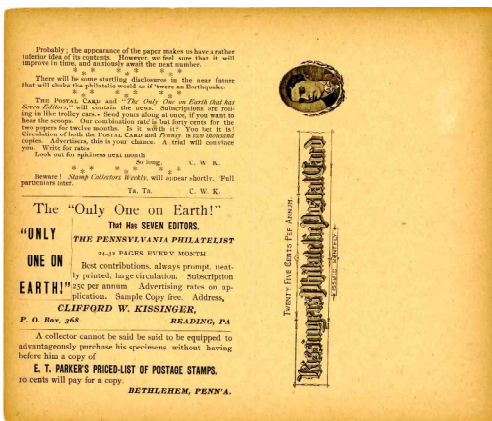
It was the year "65 T.B.C." (1965 TIME BEFORE COMPUTERS!). I looked in the *Scott Catalogue*. I looked in *Thorp-Bartels*. I had a friend in England check his 20-volume set of *Higgins & Gage*. I looked everywhere I could think of. A few people

who responded to my letters of inquiry thought the name sounded familiar, but none could remember why! So the card went into a box tucked away in the stamp closet only to be forgotten. This year (2015) a copy of the card appeared in a *Schuyler J. Rumsey Philatelic Auction*, and my search for an answer to my rarity was solved!

The face on the card belonged to Clifford W. Kissinger, a philatelic publisher and stamp collector who died in 1938. As I researched, I would learn that Clifford had been a "colorful" figure in philatelic circles for nearly fifty years. Kissinger grew up, raised a family, and spent his entire career in Reading, PA. He traveled worldwide, meeting and spending time with philatelic friends. Now, in the year "15 C.G.A." (2015 COMPUTER GOOGLE AGE) one

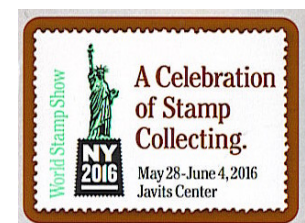
needs only to Google "Clifford W. Kissinger" to learn the philatelic biography of the colorful philatelist, writer, and publisher who made his mark in the world of philately from 1892 until his death in 1938.

Another Auction House described the card as follows: *"An odd bit of postal history from the free wheeling days of philatelic publishing. This is the house organ of young Clifford W. Kissinger of Reading, Pa. An ambitious egotist, he used a simulated Governmental Postal Card to circulate his views about other stamp publications, personalities, and Societies. He went on to become a prominent member and officer of the APS."* Mystery solved after fifty years-how I love computers and postal history. (Below are front and back sides.)



→ **Winter Auction Continued:** Bidding rules remain the same as previous auctions. ●The minimum bid is \$1.00. ●The minimum bidding increment is 50¢. ●Each club member is limited to submitting 10 lots. ●You may also donate

items for the auction. When you do this, the realization will go to PSLC. The donated items are greatly appreciated and benefit all our club programs. As you build your lots for the auction, choose wisely, items that you would be interested in yourself.



## Club Notes

### Programs/Hosts/Shows

#### 2016 Programs

- 13 January:** Winter Auction; Hal Klein, Host
- 10 February:** The 1981-1995 U.S. Transportation Series, Hal Klein
- 9 March:** 1.) The 5-Cent Enclosed Rate. Bill Schultz. 2.) Lancopex prep
- 13 April:** History and Culture of Germany on Stamps. David Hunt
- 11 May:** Coins on Stamps & Stamps on Coins. John Brownell
- 8 June:** Spring Auction
- 13 July:** Civil War Covers. Dennis Shumaker
- 10 August:** Summer Picnic, Millersville Memorial Park
- 14 September:** Fall Auction
- 12 October:** Pawling Postal History: Past and Present. Charles Di Como.
- 9 November:** '16 Open House
- 14 December:** Dinner

#### 2017 Programs

- 11 January:** Winter Auction. Doug Milliken, Host
- 8 February:** U.S. International Stamp Shows: History, Stamps, & Ephemera. Paul Petersen
- 8 March:** 1.) Lancopex preparation
- 12 April:** TBA
- 10 May:** Collectibles and Your Estate. Patti S. Spencer, Esq.

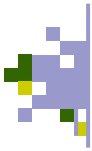
#### 2015-16 Shows

**Some Sundays Stamp Bourse:** 21 February 2016. Farm & Home Center, 1383 Arcadia Road. Kevin Kellman (K<sup>2</sup>), Manager, 301-371-4558.

**York Stamp Show:** 22-23 January 2016, York Fair Grounds.

**Lancopex:** 29-30 April 2016, Farm & Home Center, 1383 Arcadia Road.

**World Stamp Show: NY-2016:** Javits Convention Ctr, NY, NY, 28 May-4 June 2016.



# Musings: January 2016

## *Niche collecting: Number ones Vs. one of each*

There is a lot of material out there to collect. As Doug Milliken noted when he spoke at the December dinner, with all the aging collectors in the county and beyond, collectibles of all kinds are ending up on the market from Flea markets to auction houses. This is also seen with the donations to APS/APRL of stamps, covers, literature and other items.

APS donations manager, Richard Nakles told Ed. that the organization averages several large boxes a week of stamp and cover donations. The library, too, APRL receives many donated collections of journals, newsletters, stamp and cover catalogs, reference books, and others. One book donation in 2014 filled the largest of rental trucks. Just ask Ken Martin and Tara Murray of APS/APRL who did the packing and driving.

So what? There is a lot of material available to collect, some at good prices. But I've already said this. How does this help PSLC members? There are some who don't wish to invest a great deal of money in their next conquest. But they desire something new to collect, something doable that is neither voluminous nor highly specialized, something that provides an engaging hunt for the items, a collection from which they learn

something new.

How about collecting numbers ones, the 1<sup>st</sup> stamp of each country? This can be difficult due to rarity and price of the early issues. Instead, consider collecting "one of each." That is, one stamp from each country. This is certainly affordable and doable with both covers or stamps.

Let's move to collecting "one of each." This is where it gets creative, and it follows the first commandment in philately, there is no "only way" to collect stamps; collecting is in the eye of the collector.

John Hotchner provides an example of a finite (in both time and geography) collection, though it is not necessarily inexpensive nor easy to compile. It is a collection of covers from each of the 21 Allies who participated in the Korean War. (*American Stamp Dealer & Collector*, (Part-1, 9/15, pg. 66-68).

In the introductory pages of my *Scott 2007 Specialized Catalogue of U.S. Stamps & Covers* is a listing of all the prefixes that are used to describe the different functions

of the many stamps as follows: **A**-Commemorative & definitive; **B**-Semi-postal; **C**-Air Post Stamps; **E**-Special Delivery; **QE**-Special Handling, etc. There are about 70 prefixes listed with an additional 36 for revenue stamps. Every time I look at the list, something new jumps out at me. How about a collection of one for each prefix?

Even this can be limited to just stamps and postal stationary (or just stamps, or just revenues), as there are additional prefixed items such as Commemorative Panels (CP) and Souvenir Cards (SC) among others.

Tired of collecting just U.S.? Scott's lists a mere 39 prefixes for foreign countries making a country collection for prefixes a possibility. There is much similarity to U.S. prefixes along with some additions and omissions.

I began my simplified collection of the Panama Canal after finishing *The Path Between the Seas*, a history of the Panama Canal by David McCullough. How can you combine your outside interests with philately?

Looking through the Scott or other catalogs is another way to find that collecting niche.

What follows are some "one of each" collecting ideas.

**Little kids:** A stamp of each color; Each shape; Each date of the year; Each state; Each animal...

**Students** (ages vary): Each U.S. President; each Canadian Prime Minister (or PMs of other countries; Royals too); Major rivers; Mountain ranges of the world; Each natural element; A cover or stamp from each country listed in their family tree...

**Beginning Adults:** Major varieties of perfs and their combinations (a great learning and reference tool); Basic watermarks; Cover from each cachet maker; Each auxiliary marking on a cover...

**Seasoned Collectors:** Advanced watermarks (especially on early postal stationary); Example of every kind of paper used in U.S. (or Canadian) stamp making; Example of every printer of U.S. stamps; Examples of every variety of tagging including tagging material and shape... Others? Ed



Philatelic Society of Lancaster County  
PO Box 6053  
Lancaster, PA 17607-6053

This document was created with Win2PDF available at <http://www.win2pdf.com>.  
The unregistered version of Win2PDF is for evaluation or non-commercial use only.  
This page will not be added after purchasing Win2PDF.