



# Philatelic Society of Lancaster County



The James Buchanan Chapter (#173) of the  
American Philatelic Society  
Chapter 118 of the American Topical Assn.

**Doors Open at 6:30 PM, Wednesday, 12 October 2016**

Lucy Eyster, Tonight's Hostess

## The Gamble, Or Was It?

Today, one can only imagine what the life was like of the man who addressed this cover to France – as a child--a student--an adult. We have read of the hardships of the lives of African Americans and/or have seen portrayals on television of lives during the Civil War, post Civil War, and in early 20<sup>th</sup> century America. One can only imagine the barriers overcome by this man in the 65+ years after the end of the Civil War to reach this point in his career in 1932.

First, Tuskegee Institute was a dream of a Freedman African American who did not have a single day of formal education, but could read and write, and a former slave owner running for political office. One wanted to secure Black voter support. One wanted to secure education for Black people. Both succeeded. The one elected fulfilled his promise to the other and had

legislation passed for the establishment of a "Negro Normal School in Tuskegee."<sup>1</sup> There, Booker T. Washington became the first principal and president of the institution in 1881, and there he would continue until his death in 1915 at age 59.



Washington hired the person who addressed this cover to France; it is the same person he hired as "The Director of the Research and Experiment Station." This individual held the position of Director from 1896 until his death 47 years later in 1943. Presidents of the United States would come to admire him while world leaders would seek his advice.

The short auction description read, "Letter TUSKEGEE

INSTITUTE Alabama USA 26 AUG 1932 for BORMES. Starting Bid 1 Euro." So, I gambled. I bid 1 Euro with a top bid of 2 Euros! (big spender!!) I did not inquire "who" signed the letter. And while I definitely had a person in mind, I did not want to ask. I did not want to alert the owner or auctioneer to what the description writer had surely missed in the write-up. So, I patiently waited for the auction to end. Then, on the closing day of the auction I got anxious; I increased my bid to 5 Euros and waited nervously.

The cover was short-paid when mailed and was returned to Tuskegee Institute for an additional 2c to pay the 5c Int'l Surface Letter Rate; "Due 2c" is noted in pencil below the corner card. The cover was forwarded from one address in France to another. The cover is addressed to John J. Creighton, Jr., son of the deceased businessman and philanthropist, John J. Creighton Sr., one of the founding families of Omaha, Nebraska. (Please turn to top of ➔Pg.2)

## The Enclosed 5-Cent Rate-Bill Schultz

*With a Special Guest Appearance from Newly Elected APS Director, Mark Schwartz*

Speaker **Bill Schultz** is well known to PSLC for his yearly presentation on any number of informative philatelic topics.

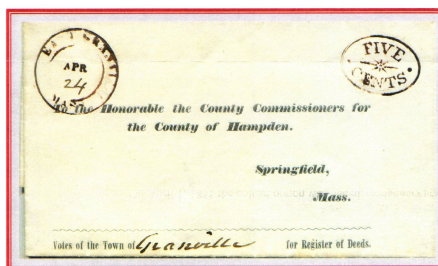
The **Enclosed** 5-cent postal rates were used by the USPOD on stampless cover mail until 1855 when the rate was lowered to 3-cents and postage stamps became required. The 5-cent rate per ½ oz. was legitimate for 117 months. **Enclosed** markings make up less than 4% of all 5-cent rates on stampless mail.

The "**Enclosed**" term means that the denomination, 5-cents in this case (a "5"), is enclosed inside a box, oval, or circle, etc. as seen in the "Enclosed" cover nearby.

New APS Director, **Mark Schwartz** wants to share about APS and is particularly interested in your opinions.

He retired from research, production, and upper management in

the scientific community. This was concurrent with an impressive philatelic resume of service, research, exhibiting, and judging.



**Volume 79, No. 10**

**October, 2016**

**Visitors are Always  
Welcome**

PSLC meets the 2<sup>nd</sup> Wednesday of the month (except August) at the Bluebird Commons in Woodcrest Villa, 2001 Harrisburg Ave, Lancaster, PA 17601 at 7:00 PM. Dues are \$10.00 a year. For club information call Lucy Eyster at 717-735-2586.

Website: [LCPS-Stamps.net](http://LCPS-Stamps.net)

### PSLC Officers and Board

#### President:

Hal Klein, 717-272-5234  
[halklein@comcast.net](mailto:halklein@comcast.net)

#### 1<sup>st</sup> Vice President:

Douglas Milliken, 717-330-4062  
[dmilliken@me.com](mailto:dmilliken@me.com)

#### 2<sup>nd</sup> Vice President:

Charles DiComo, 914-450-3791  
[charlesdicomo@gmail.com](mailto:charlesdicomo@gmail.com)

#### Past President:

Bill Greiner, III, 717-394-0879  
[sunfighter@verizon.net](mailto:sunfighter@verizon.net)

#### Secretary:

Diane Meek, 717-396-9262  
[dimeek111@gmail.com](mailto:dimeek111@gmail.com)

#### Interim Treasurer:

Lou DiFelice, 717-295-5536  
[loudifelice@gmail.com](mailto:loudifelice@gmail.com)

#### Publicity:

Len Kasper, 717-723-1864  
[hotrodparts33@aol.com](mailto:hotrodparts33@aol.com)

#### Membership & ATA:

Lucy Eyster, 717-735-2586  
[lucyeyster@yahoo.com](mailto:lucyeyster@yahoo.com)

#### Newsletter Editor:

**Programs, and APS Rep:**  
Paul Petersen, 717-299-5640,  
[pcpetersen@comcast.net](mailto:pcpetersen@comcast.net)

**Do you need a ride to the Reading Stamp Show on 5 November? Call Len Kasper (723-1864), Paul Petersen (299-5640), and/or Dennis Shumaker (426-3870).**

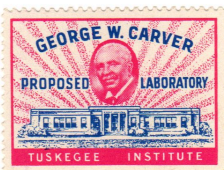
←Pg.1 (Creighton University, Creighton Blvd, etc.). The cover contained a request for a donation.

I was the successful bidder -- the only bidder. And I had guessed whom it was from correctly. The cover was from *George Washington Carver!* (Sc#953 & Sc#3183-C). His shortened biography reads, "...Carver was an African American botanist and inventor born into slavery in Diamond, Missouri, between 1861 and 1864; the exact year and date of birth are unknown. George, a sister, and his mother were kidnapped when slaves by night raiders, re-sold as slaves in Kentucky, then George was found and traded back to his slave master in Missouri for a race horse."<sup>2</sup>



Carver was a teacher—a scientist—a botanist at the Tuskegee Institute devising over 100 products using the peanut—including dyes, plastics and gasoline. He also made over a hundred products from the sweet potato. Carver's prominence as a scientific expert made him one of the most famous African-Americans and one of the best-known African-American intellectuals of his time. In 1916, he was made a member of the British Royal Society of Arts—a rare honor for an American. Carver also advised India and leader Mahatma Gandhi on matters of agriculture and nutrition. Carver died in 1943."<sup>3</sup>

So, was it a gamble? No, postal history is never a gamble – I believe it's always a sure thing. And what a fabulous piece of postal history this turned out to be! **Hal**



## September Minutes and Treasury

Diane Meek & Lou DiFelice

**Opening:** President Hal Klein opened the meeting at 7:05 pm with some announcements. He noted the solid attendance at both the August Picnic and the Barnstormers baseball game. He announced the APS Volunteer Award won by Dick Colberg and referred to the September newsletter for the details.

**Approval of Minutes and Treasurer's Report:** There was no business meeting in August because of the picnic, but the minutes and treasurer's report of July were approved unanimously by voice vote.

**Monthly Drawing:** Prizes included examples of the *Leipziger Messe* stamps of Germany as depicted in the September newsletter article were won by Len Kasper, Mike Shirley, Jim Perotti, and Bill Snyder.

**Membership:** Lucy Eyster introduced three new members: 1. Aaron Heckler of Salford, PA who collects PPCs and DPO/Doane/4bar cancels of SE Penna. 2. Stephanie Harper and 3. Joe Berlin are from the Harrisburg Stamp club. Tom Harper was a guest. Attendance tonight was 49.

**Open House and 1-Page Exhibits:** Len Kasper explained the marketing and format for the 9 November Open House and Paul Petersen discussed the displays needed by PSLC members for this event. These are for items not yet shown at our Open House. He will have sign-ups in October to list the exhibits.

**Dinner with the Speaker:** Paul passed around sign-ups for next meeting's dinner with the speaker, Bill Schultz, at Olive Garden. There will also be a special guest appearance from newly elected

APS Director, Mark Schwartz who will be joining us for dinner.

**Reading Stamp Show:** This will be on Saturday 5 November in Leesport, north of Reading. Len Kasper, Paul Petersen, and Dennis Shumaker have offered to drive. (See box for information on Pg.-1.)

**Stamp & Cover Sale:** Club member and retiring stamp dealer, Al Schaub, is offering his dealer's stock at great discount. Contact Al if interested in seeing what he is offering (717-560-6278).

**September Program:** The September program was our annual Fall Auction, which included several donated lots in support of PSLC.

**Treasury Report: 1 July-31 Aug**

**Opening:** \$4,914.88

**Income:** \$0.00

**Expenses:** \$222.75

**Closing:** \$4,692.13

3 CDs valued at \$6,993.13

## The Future of the Hobby: The First APS Surveys

In his October article in *The American Philatelist* (10/16, pgs. 1090-1094), APS Executive Director, Scott English looked at the future of the hobby and at APS as the champion of collectors.

Of particular note is the number of APS members who have not renewed over the years. In June the first of the APS surveys targeted those who have not returned. In-

formation regarding the results of the surveys are on the APS website.

PSLC has a solid APS membership, but some of our members have let their membership lapse. This is information that APS would like to have. Some reasons are uncontrollable such as age or disability, but others such as membership costs or unawareness of APS services and benefits may be controllable. What

can you tell APS leadership?

APS Director Mark Schwartz will be taking a little time at this month's meeting to seek your feedback including the good, the bad, and the ugly from APS members, never-members, and non-renewers. If you're shy, write your questions and concerns in advance for Mark for Wednesday evening.

☒ .....(Cut)

Please clip this dues notice, complete it, and turn in to Lucy Eyster at the November meeting with \$10.00. You may also send it to her at 503-B, 2001 Harrisburg Avenue, Lancaster, PA 17601

Name: \_\_\_\_\_ Phone: \_\_\_\_\_

Email Address: \_\_\_\_\_

ATA Member ☐

APS Member ☐

Please check the appropriate ATA/APS box(s) if you are a paid up member. ☒ Make checks payable to P.S.L.C.

2  
0  
1  
7  
  
P  
S  
L  
C  
  
D  
U  
E  
S

### References:

1. [www.tuskegee.edu/about\\_us/history\\_and\\_mission.aspx](http://www.tuskegee.edu/about_us/history_and_mission.aspx)
2. [en.wikipedia.org/wiki/George\\_Washington\\_Carver](http://en.wikipedia.org/wiki/George_Washington_Carver)
3. [www.biography.com/people/george-washington-carver-9240299](http://www.biography.com/people/george-washington-carver-9240299)

**APS Survey Results:** See [www.stamps.org/plans-and-reports](http://www.stamps.org/plans-and-reports). Go about halfway down for •APS Survey Results. See ☒Discontinued Memberships in the APS Report, ☒Portland Focus..., and ☒Final Report. There are data and charts here with some very noteworthy conclusions.



## Remembering NY2016

*Next in this ongoing series are the comments from Club Trekmeister Roy Baardsen regarding his experience at the International Show.*

I didn't buy anything new at this show other than picking up my standing order from NORDICA while enjoying the exhibits, the atmosphere, and Court of Honor.

NORDICA is the North American distributors for the eight Scandinavian countries of Norway, Sweden, Denmark, Finland, Iceland, Greenland, Faroe Islands & Aland Island.

It was my great pleasure to work with Mike Matus, Mike Bach, and Pete Baney to put together this bus trip to this great show. Not to forget the wonderful job by Paul Petersen and his newsletters and e-mail blasts promoting this bus trip and getting the Lancaster contingent on the bus on time.



I hope to help plan many more Reading and PSLC Stamp Club bus trips to various locations in the years to come.

A personal goal at the show was to meet with a member of the Reading club, Céline Lape, who had moved to New York and then recently to Massachusetts. She drove to Providence Rhode Island and from there took a train to Port Authority followed by a cab to NY-2016. We have kept in touch since she left PA about seven years ago. She has remained a member of the Reading club since, and it was so good to see her. She was delighted to see many members of her former Reading club that she left but never forgot.

I will always remember the happy, but tired faces of all the club members on the bus on the way home. I am just glad that I had a part in this adventure. Roy K. Baardsen

**Send Ed your memories of this decennial Int'l Stamp show in NYC last June.**

## PSLC Goes to Balpex & the ATA

PSLC participated in two extra-curricular activities in September: the Baltimore Stamp Show, known as Balpex and our annual club baseball game at Clipper Stadium to see the Lancaster Barnstormers.

Balpex unofficially kicks off our Fall stamp-collecting season with one of the largest shows in the region; large in both the number of dealers and the assemblage of award winning philatelic exhibits. It's a time to see the dealers we know and chat with fellow collectors from PSLC and other local clubs.

Pictured below are **Mike Marino (L)** and **Bill Greiner (R)** looking to fill some spaces.



PSLC is Chapter 118 of the *American Topical Association* and Lucy Eyster and Paul Petersen spent some time at the ATA's table to promote topical collecting and recruit new members for the organization.

The picture nearby includes the ATA table at Balpex: Left to right are Lucy Eyster, ATA Rep, Vera Felts, ATA Executive Director, and Joe Sullivan, ATA

Ambassador from Towson, MD.



Joe coordinates the ATA table at Balpex every year with hobby materials and volunteers.

Below is a postcard from the Graphics Philately Association of which Joe Sullivan is the webmaster (graphics-stamps.org), an affiliate of ATA that studies printing and books on stamps. The website is well worth checking for an illustrative gallery of stamps, reference articles, and other information.



## Barnstormers Night



*What a difference a year makes...* This time last year, the Barnstormers were leading the Atlantic League and had clinched a post-season berth with home advantage. They won big that night! On 8 September this year it was the opposite. They were league cellar dwellers and lost big. But win, lose or draw, fifteen PSLC members and friends had a great time and are looking forward to a Barnstormers game next year.

## Club Notes

### Programs, Hosts & Shows

#### 2016 Programs

**12 October:** 1.) The 5¢ Enclosed Rate. Bill Schultz. 2.) Mark Schwartz, APS Director, "Q&A." Lucy Eyster, Hostess

**9 November:** '16 Open House and Members' One-Page Exhibits. Len Kasper and Paul Petersen. Vern Marten, Host

**14 December:** Dinner

#### 2017 Programs

**11 January:** Winter Auction. Doug Milliken, Host

**8 February:** '38 Prexies, Hal Klein

**8 March:** 1.) "Chasing Jenny-A Philatelic Mystery," Jeff Stage of APS. 2.) Lancopex prep.

**12 April:** U.S. Postal Rates: 1792-1869, Bill Schultz

**10 May:** Collectibles and Your Estate. Patti S. Spencer, Esq.

**14 June:** Spring Auction

**12 July:** Postal History Classics. Dr. Charles DiComo

**9 August:** Mid-Summer Picnic, Millersville Memorial Park

**12 September:** Fall Auction

**11 October:** Confederate Philately, Trish Kaufmann

**8 November:** Open House and One-Page Exhibits

**13 December:** Dinner

#### 2016 Shows/Events

**Gettysburg:** Sat., 15 October, Gettysburg Fire Company.

**Allentown:** Saturday, 29 October, Jorden United Church of Christ. The Capital City Philatelic Society, Lindmuth Elementary School.

**Bellefonte:** Fri/Sat, 28-29 October, American Philatelic Research Library-Grand Opening. All Welcome.

**Reading:** Saturday, 5 November, Leesport Farm Market, Route 61 just north of Leesport.

**Some Sundays Stamp Bourse:** Sunday, 18 December. Farm & Home Center.

## Musings; Philatelic Covers, Postal History, and So Much More

I have appreciated Hal Klein's newsletter articles on postal history. Beyond the details of the rates and routes of the cover, Hal gets into the soul of the cover: Who was it written from/to? What was the purpose of a cover? Is there any historical context? And there are many more questions depending on the specific cover in question.

Hal's article this month is especially poignant with his coverage of Booker T. Washington and George Washington Carver. It reminded me about the letters I have that are signed by Booker T. and addressed to my great-grandfather in the late 1890s and early 1900s. (They have been in a box in the attic for eons.) These, too, are fundraising letters for Tuskegee Institute in Alabama.

Then there is the world of philatelic covers. These are made by and/or for stamp collectors in a variety of styles. Purposes are to catch one's eye, to mark a celebration, or to display a set of stamps, among others. These differ from covers that were used routinely for commercial or private conveyance.

Philatelic covers may be over-franked with perfectly spaced stamps. Cinderellas and unofficial auxiliary markings may be applied as well as a cachet. Stamp show covers, First Flights, and FDCs are philatelic covers. Many are created

for souvenirs or any of a number of events or occasions. Stamp dealers and other creative marketers use them to promote a product or service.

Many eschew philatelic covers, opining that they are somehow artificial or illegitimate. This is just pure snobbery, in my view. I happen to like philatelic covers. They are attractive ("sexy"?) and most are not expensive. Ones I select often have a historical context to my areas of interest.

When I re-engaged in stamp collecting around 2000, country collections of my youth became tired. A wise collector asked me "What are your interests?" There were many, but strong at that time was my study of the 1914-1918 Great War. I had a devil of a time finding lists of stamps, so I went through the catalogue of the war years themselves and then researched anniversary dates. France, for example, issues a memorial stamp commemorating Verdun (1916) every year ending with a -6. This method was helpful. With the WWI Centennial currently at hand, countries worldwide are issuing WWI memorial issues.

The Germany Philatelic Society is another source for WWI material. Their journal, *German Postal*

*Specialist* is a good source for military postal history. From this, my interests grew to include WWII. Beyond stamps, I seek covers, postcards, maps, and other World War I-II related material.

Consider the cover nearby with the cropped back side reproduced below it. I came across this not too long ago, and I hope to do some research. Right now I have more questions than answers.

The cover was mailed 22 April 1941 from Hepentals, Belgium to Germany. The town of about 25K is just west of Antwerp. It was censored as can be seen, and the hand struck stamp in red ink over the censor tape bled and penetrated the cover. The cancel is in Flemish, and it may have been made specially for a church-museum event. The five nicely placed stamps are part of a nine-issue 1939 set of Belgium cities' coats of arms (B264-B272).

**Speculation:** Since Germany occupied

Belgium and many soldiers were collectors at the time, was this a philatelic souvenir cover sent back home? Was it from a collector? The address looks commercial. What about the postmark? Was it made to celebrate an event or place? It is too early to tell right now, but there is a lot to learn from this item. Time and research may get us closer to the answers. Stay tuned. Ed♣



Philatelic Society of Lancaster County  
P.O. Box 6053  
Lancaster, PA 17607-6053