



Philatelic Society of Lancaster County



The James Buchanan Chapter (#173) of the
American Philatelic Society
Chapter 118 of the American Topical Assn.

Doors Open at 6:30 pm, Wednesday, 14 June 2017
Presentation & Business Meeting Begin at 7:00 PM. Dick Shaefer, Host

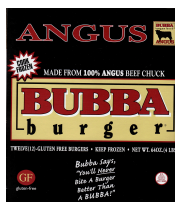
From the West End to Tahiti

Any Royal Watcher worth his or her salt followed the recent semi-Royal wedding of Miss Pippa Middleton, the sister to the mother (Catherine) of Prince George, the third in line to the Crown of the United Kingdom. And since they are honeymooning at Tetiaroa, this piqued my interest, as worldwide collectors will surely know that this is just a few miles north of Tahiti. And topical collectors of Marlon Brando on Stamps are aware that he once owned Tetiaroa as a secluded (and expensive) resort destination for family and friends.

Since Tahiti and its stamps have been on my mind, so has a visit to this exotic location with its fresh blue lagoons and thatched dwellings made for atmosphere. Perhaps, I'll travel there via the stamp images and the internet. When there I'll let my mind wander.



As I am just starting this area, I'll have more in future columns along with stamp illustrations. The philatelic history is interesting starting with FR stamps carried there by missionaries, which launched the beginning of postal history for this beautiful destination. **Doug**



PSLC PICNIC ALERT: Set your calendars for Wed., 9 August, 6:00 pm @ Millville Memorial Park. There will be sign-ups tonight for attending, volunteering, and listing the name of your dish whether dessert, side, or appetizer. If you won't be at the meeting to sign up but wish to, plz contact Paul Petersen or John Hostetter.

Spring Auction

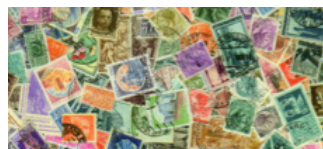
Brought to you by the PSLC Auction Team

PSLC Unchained! Isn't this what some of PSLC members call the club auction? Several times a year we take the opportunity to sell doubles or parts of our collections in which we are no longer interested or have outgrown. And we are able to bid on new material. So if your philatelic juices are starting to flow...**be unchained!**

Instructions: ☐ You'll receive a numbered paddle when you arrive. Place this number on all your items to be auctioned, and use this paddle during the auction when you are bidding. This will insure that what you buy and what you sell are accurately credited and debited. ☐ Be sure

that all your lots are accompanied by an accurate and detailed description, as this helps buyers to better understand what they are looking at. ☐ Auction lot description forms have already been emailed, and hard copies will be available. But don't wait until you're at the auction to do this. ☐ Fiscal transactions will only be made after the last lot has been sold. The Auction Committee recommends that you: ☐ Bring cash to pay for the items you win and ☐ Keep a running total during the auction of the items and prices of the lots you sell and win. ☐ Finally, please securely attach your sales information to the lots you are

entering into the auction. This will help avoid any misidentification with other sellers.



Bidding Rules: ☐ Minimum bids are \$1.00 per lot. ☐ The minimum bidding increment is 50¢. ☐ Only dues-paying members may participate in the auction. ☐ Auction participants are limited to ten (10) items. ☐ You may also donate items to the club with the realizations going to the benefit of the PSLC. Donations are welcome and greatly appreciated.

Volume 80, No. 6

June, 2017

Visitors are Always Welcome

PSLC meets the 2nd Wednesday of the month (except August) at the Bluebird Commons in Woodcrest Villa, 2001 Harrisburg Ave, Lancaster, PA 17601 at 7:00 pm. Dues are \$10.00 a year. For club information call Paul Petersen at 717-299-5640

Website: LCPS-Stamp.org

PSLC Officers and Board

President:

Douglas Milliken, 717-330-4062
dmilliken@me.com

1st Vice President:

Charles DiComo, 914-450-3791
charlesdicomo@gmail.com

2nd Vice President:

TBA

Secretary:

Diane Meek, 717-396-9262
dimeek111@gmail.com

Interim Treasurer:

Lou DiFelice, 717-295-5536
loudfelice@gmail.com

Past President:

Hal Klein, 717-272-5234
halklein@comcast.net

Publicity:

Len Kasper, 717-723-1864
hotrodparts33@aol.com

Membership & ATA:

Lucy Eyster, 717-735-2586
lucyeyster@yahoo.com

Newsletter Editor:

Programs, and APS Rep:
Paul Petersen, 717-299-5640,
pcpetersen@comcast.net

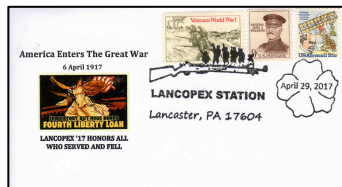
NPM-21 September

To reserve your seat, please send a check for \$65 (per person) made out to the Reading Stamp Collectors Club. Mail to Roy K. Baardsen, 379 Sioux Court, Sinking Spring, PA 19608-8913.

2017 Lancopex Review

Lancopex Show Cover

This year's cover commemorates the 1917 U.S. entry into the Great War which was already in its third year in Europe and elsewhere. The Cover Committee members are Diane Meek and Paul Petersen.



Club Bio Mike Marino

Mike and his two brothers were kids when their dad started to collect as a form of stress relief. As a result of this, they all began collecting, though Mike remains the only stamp collector of all the siblings.

But alas, like so many of us, it was not just stamps. Mike collected coins as well. He shopped at Sattler's Department Store in Buffalo, NY where he spent his allowance and earnings from his part-time jobs. While he has waxed and waned with his coins, he has been more reliable in philately.

Stamp dealer Harold B. Rice was Mike's philatelic mentor in the '60s, and he is still in business! Mike's uncle was his coin mentor.

Starting with a U.S. Liberty Album early in his collecting, Mike has augmented this with a Lighthouse album. Besides collecting United States, Mike collected Canada, United Nations, and Vatican earlier in his life. With U.S. he collects singles, mint, and plate blocks. His emphasis is pre-World War II. He no longer has much interest in First Day Covers.

Mike joined PSLC in January of 2016 through the Harrisburg club. He noted the opportunity to attend the International Stamp Show in NYC on the club bus trip and has made several friends since joining. With a small stamp business, the club bourse and some of the local stamp shows give him a good opportunity to expand his horizons.

Mike has been in sales in the area of food products. He has had a variety of positions, and he is enjoying his new job in PA. He and his wife Margaret live in Hershey and have a grown son in California and a daughter and family in Mass.

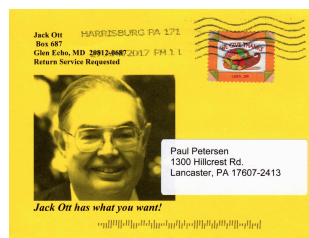
It was a great stamp show again in April with many highlights in data and images to share.

Following up on last year's attendance system, the Registration Table was busy with numbered tickets including a few new twists. We believe that this data may be more accurate, and we learned some things at this show that we'll adjust next year.

At the Registration Table are standing left to right: **Dick Shaefer**, Co-chairman and **Doug Milliken**, President. Seated left to right: **Lou DiFelice**, Co-chairman and Treasurer, **John Ehleiter** and **Deb Ehleiter**. ↓



On Day-1 there were 122 attendees, and on Saturday there were 105 for a total of 227. This includes club members but not dealers. Twenty dealers were scheduled, but dealer Jack Ott, MD, passed away suddenly a few days before the show. Jack was well known to the club and customers and will be missed.



There are about ten joint members of both PSLC and The Reading Stamp Collectors Club. Many see this as being one large club, as we do much together. RSCC recently received a significant philatelic literature donation. How do we dispose of this? With Jack Ott's table now available, they raised some funds. Below are **Mike Matus** (L) and **Pete Baney** of the RSCC. ↓



With **Dr. DiComo's** work to revise our website (lcpss-stamps.org) and Facebook page, we had new sources of referral to the show. There were 34 first-timers who signed up for next year's mailing. Our intent was to determine the referral sources for first-timers; unfortunately some of this data was comingled with the regulars. The composite data is interesting nevertheless, and next year, we'll separate first-timers from others for sure. Beside 52 reporting the show notification from our club mailing, some of the other referral sources are as follows: PSLC Website: 18; Newspaper: 15; APS e-mail blast: 8; Notices at other shows: 3; Linn's: 3; Google: 3; Craig's List: 1; and Other: 3.

And speaking of Lancopex publicity, **Tony Coccio** thought we needed a bigger sign on Manheim Pike to better direct customers to the show. The current ones were too small, Tony opined, so he made a bigger sign that is seen below. Thanks, Tony.



USPS returned this year with the same flair as last year including three tables of stamps and philatelic collectibles, plus some great t-shirts with classic stamps.



Pictured above ↑ from left to right are **Brenda Duncan** of the Greenfield PO; **Lisa Joson**, Lancaster Post Office Supervisor; **Kevin Collins**, District Retail Specialist; and **Doug French**, Lancaster Postmaster.

This year **Truyde Greiner's** Youth Table had a bumper crop. This was a family with four young collectors. They spent several hours at this table, on the bourse floor, and at the stamp and cover

displays. Pictured below are Brenda Green and her two granddaughters and two nieces, all displaying their stamps and covers. Back row: **Brenda Green**; Front row (left to right) **Kaylee** (holding **Zoe**); **Lexi**; and **Brianna**. **Truyde Greiner** is behind the table. All the girls seemed to love their topicals. PSLC followed up after the show by sending them the ASDA albums designed for young collectors. They hope to dive even deeper after school is out for the summer. ↓



For the last few years, club member Len Kasper and his family have provided the lunches, snacks, coffee, and soda for the two-day event. All the entrées are homemade and the donuts and many of the other goodies are fresh from Shady Maple. Pictured below is **Roy K. Baardsen** (right) making a purchase from **Len & Karen Kasper**.



One of the most important data points for this show was the participation of 40 club members to make this event happen. This included the dozen or so Lancopex Committee members and the volunteers to set up, tear down, sell cachets, promote PSLC, APS, and ATA, register newcomers, provide Buddy Tours, work with the young collectors, announce the hourly door prizes (\$5.00), and so much more. Below **John Ahlfeld** (L) and **David York** (R) sell cachets and promote the club and others. ↓



May Minutes and Treasury

Diane Meek & Lou DiFelice

Opening: 1st VP **Dr. Charles DiComo** opened the meeting at 7:00 pm with a welcome to all.

Program: Program chairman, **Paul Petersen** introduced tonight's speaker, attorney **Patti Spencer, Esq.** who gave a very interesting presentation on "Collectibles and Your Estate" accompanied by an extended and bound handout. In addition, Ms. Spencer donated a copy of her recent book, *Your Estate Matters* as a door prize. This was won by **David York**.

Minutes: The Minutes and Treasurer's Report of April '17 were approved unanimously by voice vote.

Webmaster Report: **Charles** reported that the revision of the current platform of the website is up to date with all kinds of information about PSLC for both club members and visitors (and potential members) to the site. He is converting this all to a Wordpress platform, which is time consuming, but this

will result in a better and a more user friendly website later this summer.

Membership: **Lucy Eyster** introduced visitor **Jerry Blevins**. The May door prize was won by **Bob Larson** which consisted of Fasto™ stamp hinges and a commemorative sheet of stamps. There are about ten members with dues in arrears, and Lucy has sent out written reminders of such. Attendance at the meeting was 52.

50-50 Drawing: **Aaron Heckler** held this drawing which was won by **Mike Bach**.

Lancopex: **Lou DiFelice** gave a provisional estimate of the show's finances. There are still outstanding income and expenses, but he believes that there will be a small profit. Lou also gave a shout-out to **Truyde Greiner** who again, this year, provided for the lunches for club volunteers and dealers with the left-

over money going to the gen'l fund. **Truyde** added that this is her 30th year in the club. **Diane Meek** lauded **Len & Karen Kasper** for the wonderful cuisine they offered for the two-day show.

Paul provided **Lancopex** data including attendance figures, dealer surveys, show covers, volunteers, and more. This material is highlighted on page 2.

Picnic: The Summer Picnic will be on our regular meeting date of Wednesday, 9 August, but starting time is at 6:00 pm. **Paul** and **John Hostetter** will have sign-ups at the June meeting. If you cannot attend this meeting but desire to attend the picnic, please contact them.

Treasury: 1-30 April 2017

Opening:	\$4227.11
Income:	\$1770.06
Expenses:	\$3655.65
Closing:	\$2341.51
3-DCs:	\$6994.08

Dealer's Satisfaction Survey

Happy shoppers and a great numbers of club volunteers help make a show, but the Dealer Satisfaction Survey is crucial. In attendance this year were 19 stamp dealers, the USPS, and the concessionaires for a total of 21. Of this, 20 (95.2%) completed the survey.

On the questions, "Did you meet your goals for the show?" Yes-16; No-4. The latter four reported a lack of customers, two noting the Saturday rain & fewer customers.

"What would you recommend to improve future shows?" Attract younger collectors. Continue to promote better attendance. Get rid of hand-held devices. Upgrade show hours for both days to 10 a.m. to 5 p.m. More folks to help dealers load and unload (X2). There were two to three dealers too many. More table space.

"What is special about Lancopex that makes your shows a success?" Friendly customers and club members. Good job helping dealers to load and unload. The USPS was pleased

to see so many stamp collectors. Great dealer diversity. A well-organized and managed show. That the club members attend the show and buy (X2)! Kudos to the USPOD with excellent products and good customer service. Excellent signage on the road with good location and venue. Lou DiFelice and all the club people. Good table prices with practical layout of the room. Nice people. Good attendance.

"Did the food and snack service meet your needs?" All comments were quite positive relating to **Len** and **Karen Kasper's** excellent customer service with good food as to quality and variety. One dealer recommended a chicken dish next year. Several thanked **Truyde Greiner** for covering the cost of the dealers' meals. The final item was to use a scale of 1-10 (10 is most positive) to score **Lancopex compared to other shows of a similar venue**. This year the mean was 8.53/10. This was not as high as last year which reached 9.2-our best ever.

Displays at Lancopex

There were five stamp & cover displays this year at Lancopex.

Al Schaub's (below) display contained advertising covers of Lancaster from the late 19th to early 20th centuries. Most were quite interesting. ↓



Chuck Kilgore had two topical exhibits: 1.) Scouting (boys and girls) and 2.) The Circus.

Paul Petersen displayed a frame of recent stamps, covers, and presentation packs of the commemorative issues noting the Centenary of the Great War 1914-1918.

RD Noble had an updated collection of United States precancelled stamps.

While PSLC no longer has competitive exhibits at Lancopex, its program to display members' items at both the November Open House and at Lancopex has been very well received.

Club Notes

Programs, Hosts & Shows

2017 Programs

14 June: Spring Auction. **Dick Shaefer**, Host

12 July: Stampless Mail from U.S. to Europe. **Dr. Charles DiComo**, **Jim Ziogas**, Host.

9 August: Picnic

12 September: Fall Auction. **Lou DiFelice**, Host

11 October: Madison, FL: 1861 3-cent Postmaster's Provisional, **Trish Kaufmann**, **Dennis Shumaker**, Host

8 November: Open House and One-Page Exhibits. **Len Kasper** & **Paul Petersen**, **Fred Mackey** and **Fred Sargent**, Hosts

13 December: December Dinner

2018 Programs

10 January: Winter Auction. **Dr. DiComo**, Host

14 February: The Overrun Countries Series Under a Printer's Loupe. **Hal Klein**

14 March: A Philatelic Journey, **Scott English**

11 April: How We Now Judge Exhibits with Points in North America. **Bill Schultz**

9 May: TBA

13 June: Spring Auction

11 July: Philatelic Estates, Donations, and Appraisals. **Dick Colberg**

8 August: Summer Picnic

13 September: Fall Auction

10 October: TBA

14 November: Open House and One-Page Exhibits

12 December: December Dinner

2016-17 Shows/Events

Some Sundays Stamp Bourse: Sunday, 13 August, and 17 December. **Farm & Home Center**.

Eastern PA Stamp Show:

Saturday, 24 June, 10-3:30. 1837 Church Road, Allentown, PA

Scopex: 24-15 June, at APC/APS, Bellefonte, PA. 10 am to 4:00 pm.



Coming in July: An article by Hal Klein on the U.S. Marshall Plan following WWII in Europe.

Musings: It's *Christmas in June* (or is it July?)

I think that the phrase is more accurately known as *Christmas in July*, but for me, June better fits the narrative for this month.

The phrase can refer to a variety of issues, and the primary one is related to summer marketing to promote special sales to prime the spending pumps of potential customers. In the last century as air conditioning was making its way, these sales were popular to get folks out of the summer heat and inside to shop.

In the latter two years of WWII, the USPOD along with the Departments of the Navy and the Army held summer affairs with key advertisers and greeting card manufacturers. This was to promote early shopping and mailing to insure a timely delivery of such to the members of the armed forces overseas in order to boost morale.

And I think some of my Danish relatives may have celebrated "*Jul i Juli*" or a Danish play on words for *Christmas in July*. Anything goes to have a party over there-so I'm told! There are a few films of the title *Christmas in July*, one being in 1940 and another in 1979 along with some stage scripts...

...but for me, I think of an unseasonal burst of cool weather in the summer. But primarily, it's an unexpected surprise such as a gift that comes my way in the summer that I

call my *Christmas in July*.

Anyway, my Christmas in June began with a 17 December 2002 cover from Austria. So, what's behind this?

In the December 2014 PSLC Newsletter I wrote about the covers from an Austria town named Christkindl which is translated Christ Child. In 1950 their PO began a local cancellation program for the holiday season mail that continues to grow in popularity (*i.e.* 2M hand canceled covers in 2015). In 1961 they added a special balloon flight that will reach its 57th assent in December. On a designated date each year these cancelled covers are transported by balloon to a nearby town where they enter the mail stream. They are quite collectible.

Each cover includes the traditional holiday cancel over a beautiful Austrian Christmas stamp, and some have a Cinderella attached. The Cinderella in the illustration states "Über Christkindl" (above or over Christkindl). I am not sure if this is a balloon cancel, as the ones I have seen through 1981 have Cinderellas with the number of the flight's year. Thus in 1961, the number on the Cinderella was 1, and so forth.

Furthermore, on those balloon flights there was a hand stamp

with flight data including the elevation reached, distance travelled, landing area, and more. On the illustration there is no number on the Cinderella, and I cannot decipher the other data in the "cancel." As is often stated, more research will be needed, perhaps a 2002 cover to use as a comparison.

So why is this Christmas in June for me? It started with the newsletter article in 12/14, and in it I added that I had no personal cover to use as an illustration. Peter Butler, a friend in Toronto read this and sent me one from his collection. It arrived just a few days before Christmas in 2014. It is illustrated below.

When our kids are home for the holidays and gifts abound, it can be hectic to say the least. Further, as the six (6) of us are bibliophiles, there are a sufficient number of books to look at and pass around, books in which things can

be stored, especially paper items like old envelopes and covers, for example, that that can be used as bookmarks!

When writing the 12/15 Newsletter, I recalled the Christkindl cover and realized it was an appropriate time to publish it. Alas, I could not find it. I even cleaned my office, and *nada!* As a stamp collector, I know that mostly everything that goes missing eventually turns up. So I promptly forgot about it.

Then a few days ago, I got to some of those '14 Christmas presents that have been waiting on my stack of "Books to be read." And in one of them was my cover. "It's like Christmas in June," I said to myself. Being a practical man, I decided that I better publish it right away and forestall any opportunity to lose it... again. If I did lose it, I would have to title the article, Christmas in 2021, or whatever year I eventually found it...again. Ed



Philatelic Society of Lancaster County
P.O. Box 6053
Lancaster, PA 17607-6053