



# Philatelic Society of Lancaster County



The James Buchanan Chapter (#173) of the  
American Philatelic Society  
American Topical Assn., Chapter 118  
Member, NY Federation of Stamp Clubs

**Doors open at 6:30 pm, Wednesday, 13 September 2017**

Business meeting and Auction begin at 7:00 PM; Lou DiFelice, Host

## From the West End

Summer is on the wane, and as we put away our garden tools and look toward fall and winter; it is time for the treadmills, stamps, hinges, and albums. My Tahiti accumulation is growing, however slowly, and Paul is twisting my arm for a one-page exhibit in November and a one frame display in April at Lancopex. The problem is that I am now double-minded with collecting Tuvalu, and when I shared this with him, he thought I should have exhibits and displays for both! Now what do I do? I don't think I'll tell him about

Granada-and, oh my, how I would like to sail-except I get seasick. I had better stick with my stamps, coins, and postcards and skip the sailboats.

And if you wish to keep thinking summer, below is an image of the picnic where folks are arriving early to help set up for our event.

And note in the box below, an idea that has been

resonating among the club leadership for a while now, and Ed. has provided some discussion below. Think about participating. It is a great idea for our new collectors to learn and a chance to review for those wishing to participate in the teaching.

Are you ready for the auction?



Let's hope we run out of paddles as a sign of a busy auction.

*Doug*

**Philately 101:** John Ahlfeld has brought up an interesting idea to add some zest to PSLC and its meetings. We have members along the entire continuum of collecting, from very new to competitive exhibitors. There are also writers, judges, an appraiser, high end collectors, philatelic leaders, and those with great expertise in postal history and traditional and topical philately. For the new collectors and for those who would like to review a bit, why not have some short classes of instruction for 15 minutes following our meetings. This could include topics such as using a perforation gauge, detecting watermarks, applying plastic mounts and which ones to use, sorting preprinted albums vs. computer generated pages vs. stock pages, and a host of other topics in which we have the resources to teach and those willing to learn. Both the need and resources are there. But what is paramount is someone to take this project under their wing. Are you willing? This will take more heart and desire than your time. See President Doug to discuss this.

## Fall Auction

**A new era?** At our June Auction there were so many participants that we ran out of paddles! And even more, there were few items left over, and of those left over, most were sold by private treaty following the formal auction. These are all good signs for a successful club sale with lots that are filled with good stuff.



**Instructions:** ☐ You'll receive a numbered paddle when you arrive. Place this number on all your items to be auctioned, and use this paddle during the auction when you are

bidding. This will insure that what you buy and what you sell are accurately credited and debited. ☐ Be sure that all your lots are accompanied by an accurate and detailed description, as this helps buyers to better understand what they are looking at. ☐ Auction lot description forms have already been emailed, and hard copies will be available. You may also access this on the website at any time. ☐ Fiscal transactions will only be made after the last lot has been sold.

The Auction Committee recommends that you: ☐ Bring cash to pay for the items you win and ☐ Keep a running total during

the auction of the items and prices of the lots you sell and win. ☐ Finally, please attach your sales information securely to the lots you are entering into the auction. This will help avoid any misidentification with other sellers' lots.

**Bidding Rules:** ☐ Minimum bids are \$1.00 per lot. ☐ The minimum bidding increment is 50¢. ☐ Only dues-paying members may participate in the auction. ☐ Auction participants are limited to ten (10) items. ☐ You may also donate items to the club with the realizations going to the benefit of the PSLC. Donations are always appreciated.

**Volume 80, No. 9**

**September, 2017**

**Visitors are Always  
Welcome**

PSLC meets the 2<sup>nd</sup> Wednesday of the month (except August) at the Bluebird Commons in Woodcrest Villa, 2001 Harrisburg Ave, Lancaster, PA 17601 at 7:00 pm. Dues are \$10.00 a year. For club information call Paul Petersen at 717-299-5640

*Website: LCPS-Stamp.org*

**PSLC Officers and Board**

**President:**

Douglas Milliken, 717-330-4062  
dmilliken@me.com

**1<sup>st</sup> Vice President:**

Charles DiComo, 914-450-3791  
charlesdicomo@gmail.com

**2<sup>nd</sup> Vice President:**

TBA

**Secretary:**

Diane Meek, 717-396-9262  
dimeek111@gmail.com

**Treasurer:**

Lou DiFelice, 717-295-5536  
loudifelice@gmail.com

**Past President:**

Hal Klein, 717-272-5234  
halklein@comcast.net

**Publicity:**

Len Kasper, 717-723-1864  
hotrodparts33@aol.com

**Membership & ATA:**

Lucy Eyster, 717-735-2586  
lucyeyster@yahoo.com

**Newsletter Editor:**

**Programs, and APS Rep:**  
Paul Petersen, 717-299-5640,  
pcpetersen@comcast.net

## Save the Dates:

21 Sept.-Bus to Nat'l Postal Museum  
11 Oct.-Confederate Philately  
28 Oct.-Roger Petersen gets married  
4 Nov.-Reading Stamp Show  
8 Nov.-Open House/1-Frame Exhibits

## Softening in U.S Stamp Market

There was a sobering article in the August issue of *Linn's Stamp News* (Pgs. 48-49) regarding the values of many older U.S. stamps.

"We could have stuck our heads in the sand and ignored the obvious, but our duty is to report marketplace reality, and this we have done (Pg. 48)."

Author Jim Kloetzel is the retired editor of the *Scott Stamp Catalogues*, who currently authors *Linn's U.S. Graded Stamp Report*, a quarterly feature in this publication.

The researchers track the market values of about 62 representative stamps in the eight grades of very good to superb. Stamps graded in the top two tiers, the Extra fine-Superb (95%) and Superb (98%) are largely holding their value.

However, since tracking these stamps, never have they seen so many declines in value in the Very Fine (80%) category. Of the 63 stamps graded as VF, as 38 have had their values lowered. This is a softening, not a dramatic lowering of values, and these items will continue to be monitored.

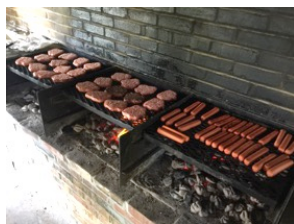
## Joe Berlin in Topical Time



In the Executive Director's report (Vera Felts) in the July-August issue of ATA's *Topical Time*, member Joe Berlin was congratulated for his first time membership in ATA through the club's drawing for memberships in ATA and APS as paid for by PSLC for year one.

## 2017 PSLC Picnic Leaves us with Many Memories

President **Doug Milliken** said that he got lucky, real lucky in that the weather turned out almost perfect. He said this because he was in charge of the weather for the event, perhaps for the third year in a row. Picnic committee co-chairman, **John Hostetter** said that he is strongly considering **Doug's** reappointment for next year.



Attendance was 34-35 out of the 38-39 who signed up. Folks were moving through the chow line so fast it was hard to count! The good news is that there wasn't much food left over with 48 burgers and 32 dogs in addition to the many appetizers, side dishes, and desserts. So we were all well-fed.



**Mike Shirley** (above) and **Paul Petersen** cooked, as **Bill Greiner** supervised. **Eleanor Wheeler** took care of the nametags and greeting cards, while **Dennis & Joy Bouchard** brought outdoor games.

Every year picnic goes forward to the cake brought by **Dennis and Lucy Shumaker** (below). They design



a cake with the image of a postage stamp.

This year's cake stamp features that of a computer operator from the 1980s *Celebrate the Century* series (below). The specific stamp was recommended by **Scott Petersen**, as he may be a budding collector of computers on stamps.



Despite a very painful knee, picnicker **Ron Hess** said that he wouldn't miss this picnic for anything (below).



And some things never change as seen below. During a cooking break, **Paul Petersen** (L) and **Bill Snyder** (R) continue their friendly discussion of the annual Army-Navy Game.



A great deal of the success of our stamp club is through the participation of several members of the Reading Stamp Collectors Club. This started with **Roy Baardsen** ten years ago. He encouraged his Reading members, and several joined PSLC. Over the years they have made significant contributions to the club, especially with their coordination of our yearly joint bus trip to something philatelic, a sojourn that everyone anticipates, especially when our next trek is

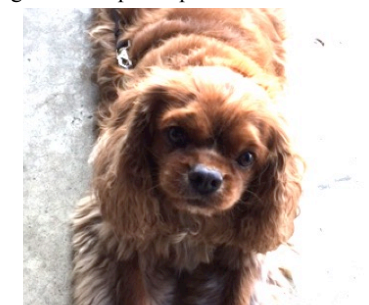
in a week. This is on 21 September to the National Postal Museum in Washington, DC. While these members are often working the room, we don't find them in a group that often. In the snap below, the recognizable faces from left to right include **Mike Matus**, **Pete Baney** (partially occluded), **Roy Baardsen**, **Aaron Heckler**, and **Mike Bach**.



Below are picnic regulars, **Chuck and Donna Kilgore**. Prior to Roy, Mike B., Pete, Mike M. and other's assumption of the bus trip coordination, Chuck and Donna planned these events for several years.



A new picnic goer this year was **Dick & Eleanor Wheeler's** 9 y/o Cavalier King Charles spaniel, **Griffin** (below). He seemed to bond with **Truyde Greiner**, and as a team, they greeted all participants.



Summer is quickly running out, and this will fire up many of us to get back indoors and return to our collectibles of all kinds.



There is a lot to look forward to with the Barnstormers, the Reading Show, the PSLC auction, Open House, 1-Page Exhibits, and many others.



## Some Sundays Stamp Shows Remain Popular

It is said that summer may be a slow time for collecting, that there are things to do outdoors and places to go. Winter is a better season to work on collections when the warmth of the hearth and lure of the

stamps make it cozy inside.



That being said, the 13 August **Some Sunday Stamp Show** at the local Farm & Home Center was busy. Managed several times a year by Kevin Kellman, Ed. counted about 8-10 PSLC members in attendance among the

other browsing customers during his 12-2:30 pm buying spree.

Besides the 8-10 dealers at these shows, Kevin provides a free lunch for show-goers. At this event there was pizza, salad, and soda. And who said "There is no such thing as a free lunch?" Certainly not Kevin Kellman!

With some changes in the regional stamp club shows, Kevin was able to add another Lancaster show for 2017, and this will be on Sunday, 15 October. The final show for the year will be on 7 December.

**Pictured left to right: Dr. Charles DiComo, Sarah Mylin, John Ford, and Richard Shaefer.**

## The Basics of Favor Cancels-Part I

Keeping my collecting within a tight budget, I have enjoyed **philatelic covers**, those mostly inexpensive covers inspired by collectors or dealers for other like-minded individuals. These can be created, for example, to advertise stuff, promote a stamp show, highlight a certain date such as a birthday or holiday, and identify the first day of issue or last day of use. Some of these covers commemorate an event, promote a stamp(s), a usage, a route, and many others. Christmas day cancels are a favorite for many.

Closely tied to philatelic covers are **favor cancels**, those postal markings applied on a cover to accommodate a stamp collector or dealer. Most typically this is a place/date stamp. Favor cancels are often used with many of the covers listed above.

The postal rules and regulations regarding favor cancels have changed and evolved over time. Before there was the "great tightening," postal clerks were rather liberal with their cancelling devices; after all, who was going to know. Even more, who would care?

A friendly clerk at the PO might come in on a Sunday or on Christmas to cancel a cover with a special date for a friend...or a fee. They might even cancel it ahead of time and hand it back.

Before the 1930s, a cancelled cover could not be handed back to the customer. Instead, it had to go into the mail stream to the address of destination. Though one could imagine that a few were handed back under the counter. Many credit our

Samp collecting president (FDR) and his willing PMG for relaxing the regs on "handbacks."

From a financial point of view, handbacks are good for postal business. Known as retained revenue, a stamp is purchased and cancelled, but the USPS is spared the cost of delivering it!

There are many varieties of favor cancels, and the options have changed over time allowing greater flexibility. Most favor cancels are legal, though a few favors have been not-so-legal.

And fast forward to a recent article in *Linn's* (5 September, Pg.-7). Here it is stated that there has been a greater than expected decline in both first class and advertising mail this past quarter. With financial challenges looming over the USPS, they can use all the retained revenue available!

Let's look at where we find favor cancels, as these are painted with a broad brush. Start with Lancopex each year where the USPS cancels our show cover with a specially designed device. This is typically a custom made rubber stamp to match the theme of the cachet. Stamp show covers across the country represent a great number of favor cancels.

Another familiar example is the First Day Cover (FDC). Here the USPS applies a cancel to a stamp on the first day it is issued. It is often accompanied by a promotional ceremony at the geographical area related to the subject of the stamp. These are the official first day of issue covers. They are

great sources of retained revenue for USPS. FDC collecting remains a popular pastime.

It was not until 1930s that cancelling devices were designed with a "First Day of Issue" imprint to indicate that the date was the first day of issue for a particular stamp. Thus modern FDC collecting was born. Prior to this, one had to know the date of issue and perhaps indicate it lightly in pencil on their cover so that it was identifiable as a first day cover.



And newer postal regulations allow a post office 30 days beyond the date to cancel a cover. Sometimes the period is even longer.

Let's look at an example. I had written about our Lancopex show cover in the PSLC page in *The Stamp Insider*. In particular I wrote about John Hostetter and some others who obtained an unofficial first day of issue by adding the \$1.15 airmail stamp to the show cover, that stamp issued on 28 April. A collector read about this and was interested in obtaining one since he collects unofficial first day of issue items. I was unable to get him one, but he later informed me that he sent a plain cover to the Lancaster PO with this stamp, and they gave him the 28 April Lancopex show cancel on his cover. More next month. ✉

## Club Notes

### Programs, Hosts & Shows

#### 2017 Programs

**12 September:** Fall Auction. Lou DiFelice, Host

**11 October:** Madison, FL: 1861 3-cent Postmaster's Provisional, Trish Kaufmann. Dennis Shumaker, Host

**8 November:** Open House and One-Page Exhibits. Len Kasper & Paul Petersen. Fred Mackey and Fred Sargent, Hosts

**13 December:** December Dinner

#### 2018 Programs

**10 January:** Winter Auction. Dr. DiComo, Host

**14 February:** The Overrun Countries Series Under a Printer's Loupe. Hal Klein

**14 March:** A Philatelic Journey, Scott English

**11 April:** How We Now Judge Exhibits with Points in North America. Bill Schultz

**9 May:** State Symbols of PA on Stamps, Vera Felts.

**13 June:** Spring Auction

**11 July:** Stampless Mail from U.S. to Europe. Dr. Chas DiComo

**8 August:** Summer Picnic

**13 September:** Fall Auction

**10 October:** TBA

**14 November:** Open House and One-Page Exhibits

**12 December:** December Dinner

#### 2017 Shows/Events

**Some Sundays Stamp Bourse:** Sunday, 15 October, 7 December. Farm & Home Center. Free lunch is served.

**Nat'l Postal Museum Club Trip,** 21 September

**ASDA Show:** 5-8 October, New York City

**Reading Stamp Show:** Saturday, 4 November, Route 61 just north of Leesport, PA at the Leesport Farm Market.

**Dinner Alert:** There will be sign-ups at the 13 September meeting for dinner with the 11 October speaker, Trish Kauffman, 4:15 at Olive Garden. Feel free to contact Trish in advance to discuss any items you would like to see.

**Meeting Minutes:** Since there was no business meeting in August, there are neither "Minutes" nor a Treasury Rept this month.

## Musings: Organizing Topicals: A look at early day mail coaches.

In the past I have written about the organization of topical collections, basically, what stamps go into each pile, or as the biologists on stamps like to say, the taxonomy of philately. A quick example: I collect maps on stamps and stamps on stamps. But I have accumulated several stamps with both maps and stamps on them. The problem: Into which pile or collection do these go? Or do I start a third collection entitled Stamps and Maps on stamps?

Suffice it to say, my 'stamps on stamps' collection has grown in both breadth and depth. In the 'breadth' department, I have a category that I have just named "mail technology on stamps" for the sake of this article. This includes stamp presses, mailroom equipment, and perforators to name a few. But one could also include entire post offices, assorted mailboxes, and trucks. There are many permutations and combinations with which one can have fun in their sorting, conceptualizing, and "taxonomizing!"

One sub-collection includes transportation (of the mails) on stamps,

and for the picky, these can be further categorized into horse 'n riders, coaches, mail trains, planes, ships, and myriad others and assortments such as rocket mail and the tin can mail of Tonga. You're seeing where I am going. But the best part is that in our hobby, for the non-exhibitor, there are few rules. And these few rules do not apply to this column. One such rule is "Don't use Scotch Tape™ as a stamp hinge."

But getting back on track, a collector can organize a topical collection in any way he/she desires to do it. The key is consistency. Will this categorization stand the test of time? Can it be logically defended? Does it make sense?

Let's look at mail coaches. I am picking this, as it contains one of my favorite sets of stamps as seen below (UK, 1984, #s1062-1066), not just the topic, but the design, printing technology, and for me, the wow factor. It may also be that my son is a pen and ink illustrator. Wouldn't it be nice if he

was employed as a stamp designer? Another reason that I picked this topic is that it was just featured in the July ('17) issue of *Stamp Magazine* (Pgs. 38-42) in an article by John Wright. My final reason is that in reading this article, I found a surprise on one of the stamps-more on that later.



The design of the Royal Mail coaches on these stamps was consistent from inception in 1784

until the early 1840s when the railroads drew the contracts to move the mail.

As can be seen on the stamp illustrations, the mail coaches did take passengers, though no guarantee of comfort was in the offering. I have also read that in some of the rural areas of the UK, passenger rides are sometimes available, but *caveat emptor*—Let the buyer (or passenger in this case) beware!

One of author Wright's points was the reliability of the coaches in their 55 years of longevity along with the potential danger to the driver and guard, the horses, and the passengers that rode them. The impact of the varied weather conditions and poor roads and bridges often compromised their safety.

But here is the surprise. As seen in the Exeter stamp below (the second stamp from the left), in 1816 a lion attacked the coach. An interesting story in itself, and easily searchable on the internet for details.

When seeking unique topicals, how many stamps can there be with a lion attacking a mail coach? Ed ☐



Philatelic Society of Lancaster County  
P.O. Box 6053  
Lancaster, PA 17607-6053