



# Philatelling Around

MEETINGS, 2ND WEDNESDAY OF EACH MONTH  
TIME: 7:30 P.M.  
LANCASTER TOWNSHIP COMMUNITY CENTER  
Columbia Ave., Lancaster, PA

Mailing address:  
L.C.P.S.  
19 Circle Rd.  
Millersville, PA 17551

Next Meeting - Wed., JANUARY 9, 2002

FOR MORE INFORMATION, CALL MARILYN SHIRLEY (717) 872-2479

VOL.12, #1      NEWSLETTER FOUNDED SEPTEMBER 1990      JANUARY 2002

## FROM THE PRESIDENT'S DESK:

GOOD NEWS - My first message will be short. (I'm under pressure from Marilyn.)

First I want to thank Dick Shaefer for his terrific leadership as president last year.

The Club has continued to progress during recent years and I intend to have this continue this year.

At the February (maybe January) meeting I will have a tentative schedule for the year in which I hope to encourage and motivate us to a more knowledgeable understanding of our hobby. Dick Colberg has shared some of his successful program ideas. Thanks Dick. Also I will ask for suggestions at the January meeting to fill several open months.

Every month I hope to have a 15 minute "SHORT COURSE" on a philatelic subject. We need all members to participate in this program by bringing any unique and successful ideas on the specific monthly topic.

Many of you have heard as I have that stamp collecting is doomed since the advent of the computer. This of course is far from the truth as is witnessed by the several

energetic youth members that we have. Let's us all, both young and old, strive to register as many youth members as we can during 2002. We can always use energetic older members also. Let's sign them up too.

I hope your Holidays were Merry and that your New Year will be Happy, Successful, Peaceful and Philatelically fulfilling.

The January meeting will include a Philatelic Quiz (maybe prizes), a short business meeting, a Short Course on hinges (bring your ideas), and a famous LCPS Auction.

See you Wednesday, January 9th -- BE THERE!!!

Philatelically,

Jim Boyles

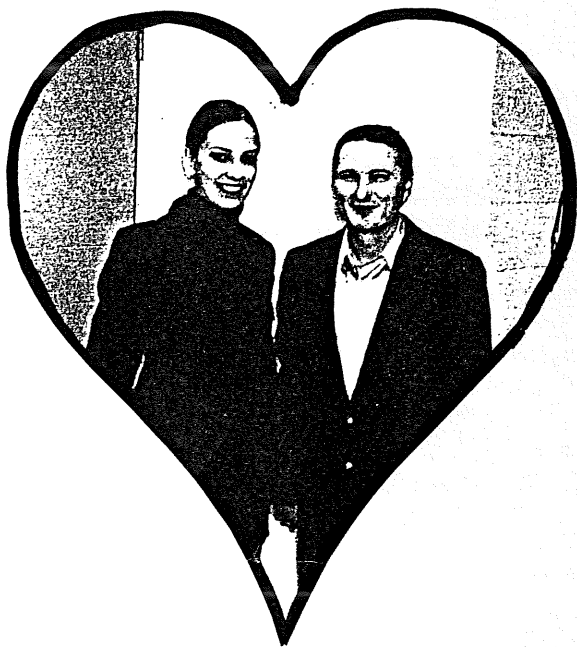
## JANUARY PROGRAM

The January Meeting will feature one of our spectacular philatelic auctions. Bring the lots you wish to sell to the meeting and we will take care of the rest. (If you put a silly minimum bid on your lots, be prepared to take them home with you.)

## HIGHLIGHTS OF END-OF-YEAR HOLIDAY BASH

This year we were VERY fortunate to have an "active" Holiday Bash Committee. The committee consisted of the following members -- TRUYDE GREINER, MARY HUSSON, MAGGIE LARKIN\*, DENISE SHIRLEY\*, MARILYN SHIRLEY, ALISTAIR WELCH\*, and ELIZABETH WELCH\*.

The theme was a "surprise" for our newly married member, PETER BILLIS AND VICTORIA BILLIS. We had a monetary gift donated by members of the club. The club members opened their hearts and were VERY generous to PETER AND VICTORIA. (VICTORIA just arrived from the Ukraine).



The food committee arranged for a delicious buffet for refreshments and the entertainment committee outdid themselves by providing music for the club.

After some light-hearted ribbing of our out-going President DICK SHAEFER, the gavel was passed to the upcoming President for 2002, JIM BOYLES. JIM has some good ideas he hopes to pass along to the club for the coming year, so YOU WILL NOT WANT TO MISS A MEETING.

The music was provided by our JUNIOR MEMBERS AND THEIR FRIENDS. The club was very impressed by their talents.

Our band consisted of the following:

BETH ANNE BALASAVAGE -- MOROCCOS

KRISTIN CASALE -- SAX

KAYLE DUGAN -- XYLOPHONE

TAYLOR KRAUSE -- CORONET

MAGGIE LARKIN -- DRUMS \*

MERIDITH MODLIS -- TRUMPET

ALISTAIR WELCH -- VOCAL \*

ELIZABETH WELCH -- SAX \*

\* -- denotes junior club members.

The evening closed with playing games various members brought.

Thanks to everyone who helped to make the evening a grand success!!



## THIS'A AND THAT'A

Looks like another year has rolled around. This is really hard to believe for most of us. Hopefully last year was a good year for you and 2002 will be even better in health, happiness and stamping!

Some statistics worth noting follow:

### Members deceased during 2001 -

CHARLES "CHUB" BURNS

KATHERN MAINE

HARRY RAPP

All the above members were very active in our club and they are sorely missed.

### New members admitted during 2001

DICK COLBERG

PHILLIP de VERGILIS

MARLENE GENTZLER

MAGGIE LARKIN \*

CHRIS MOYER \*

PAUL PETERSEN

BOB RUNKLE

DENISE SHIRLEY \*

DON SMITH

TED von WALLMONICH

ELEANOR WHEELER

RICHARD WHEELER

ALISTAIR WELSH \*

ELIZABETH WELSH \*

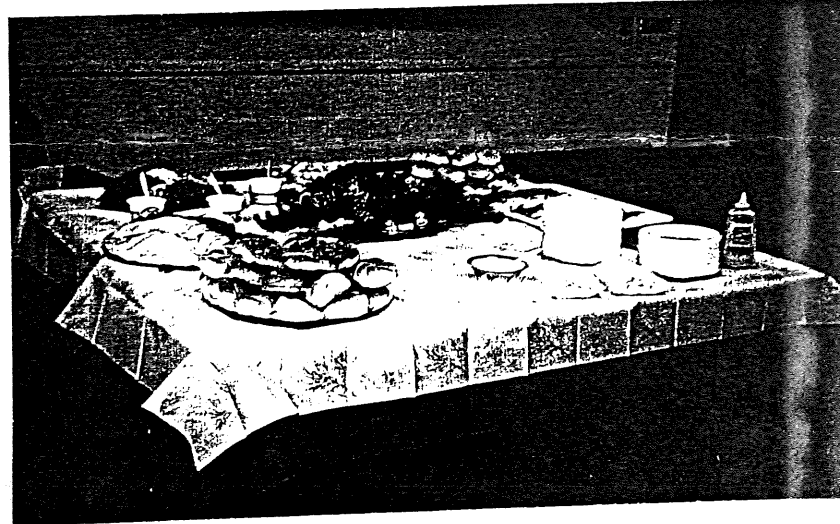
\* -- denotes junior members

We are very fortunate to have had 14 new members join our club last year -- of which 5 were junior members.

## SOME JACKPOT WINNERS IN 2001

Some of the "lucky ones" of the club regarding jackpot drawings are -- ALLEN WHEELER, BILL GREINER, DAVE YORK, MAGGIE LARKIN, HILTRUD LU and DICK SHAEFER

We may have missed a few lucky winners in the above names -- whoever, you know who you are and we are sure you will list the "big winner" on your income tax for 2001!



THANKS TO THE FOOD COMMITTEE - Tryde Greiner, Mary Husson, Denise Shirley\* (cookie baker) and Marilyn Shirley

DUES -- DUES -- DUES

Many of you have already paid your dues for the 2002 year. For that we thank you. But for those who have not sent in your \$5.00 check, we would appreciate hearing from you.

YOU KNOW THIS IS THE BEST BARGAIN IN TOWN! If you get a newsletter each month, the postage alone is \$4.08. Therefore, your donation to the club comes to .92 cents. Talk about non-profit -- I think we are actually going in the whole. It's a good thing we have auctions every now and then. So, get that check in the mail TODAY. Send it to BEN HELLER OR MARILYN SHIRLEY.

## Top Ten Fantasies of Stamp

### Collectors --

10. Spouse suddenly becomes interested in collecting.
9. Market for damaged stamps unexpectedly skyrockets.
8. Rich elderly widow next door dies and wills you her late husband's Zeppelin collection.
7. Stamp Club finds location for next show. (dealer fantasy)
6. Dealer offers you \$500.00 for stamp you found in other dealer's nickel box.
5. You can go back to 1981 for just one day to sell your collection.
4. You rub it and a genie pops out. (Oops!--lamp collector fantasy)
3. Fast, courteous service at local stamp shop.
2. Stamp Club offers well-written insightful newsletter.
1. Stamps accepted at full catalog value toward payment of income taxes.

## NEW MEMBER

Our most recent New Member for the year 2001 is --

DON SMITH  
104 W. Penn Ave.  
Cleona, PA 17042-3227

Telephone: (717) 273-9184

Please make a special effort to welcome DON at our meetings.

## ADDRESS CHANGE

After January 7, 2002, LUCY EYSTER will have a new address. BE SURE to note this in your club membership directory.

LUCY EYSTER  
B 113  
2001 Harrisburg Pike  
Lancaster, PA 17601

Phone: (717) 735-2503

## LCPS OFFICERS

JAMES BOYLES, PRESIDENT  
MARILYN SHIRLEY, VICE PRESIDENT  
DAVE STRAYER, SECRETARY  
BEN HELLER, TREASURER

## NEWSLETTER STAFF

MICHAEL SHIRLEY, GRAPHIC ARTS  
MARILYN SHIRLEY, DATA PROCESSING



*January 2002*