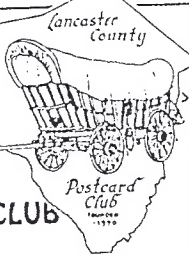


# The Card

MONTHLY PUBLICATION OF  
THE LANCASTER COUNTY POSTCARD CLUB  
LANCASTER, PENNSYLVANIA



August 1998 Vol.9, No.8 #104

NEXT MEETING

August 17, 1998 7:30 pm

Buy, sell, trade from 6 pm

Meets 3rd Monday  
Farm & Home Center  
Routes 30 and 72  
Lancaster, Pa.

Yearly membership is \$8 (\$2 extra for each member at same address). Membership year is April 1 to March 31. Make check payable to: LCPC, c/o Dorothy Fry, 1050 Kleinfeltersville Rd., Stevens, PA., 17578. Advertisements are: \$15 full page, \$8 1/2 pg., \$5 1/4 pg., prepaid with copy. Classified ads are FREE to members, but please submit your ad for each issue. Send all ads, correspondence and change of address to Jim Ward, editor, 1795 Kleinfeltersville Rd., Stevens, PA. 17578-9773, phone 717-721-9273. THE CARD staff includes Dorothy Fry and Carol Dennis, proof readers and Gerald Hostetter. Harold and Ruth Moyer handle the mailings. Recent circulation averaged 229 homes and 14 postcard clubs with whom we exchange.

## NEW MEMBERS

#494 Eugene M. BAKER 920 Plane St., Columbia, Pa., 17512 Ph. 684-1919. General interest in postcards.

#495 Phil Nolt 530 N. Shirk Rd., New Holland, Pa., 17557. Ph. 717-354-8033. Likes Michigan, Great Lakes, light-houses, trade cards and farm machinery.

## MONTHLY EXHIBITS

63 members and guests were entertained with AMUSEMENTS and AMUSEMENT PARKS in July's exhibits.

JIM WARD	FIRST	The Water's Fine
CHARLIE SZVITCH	SECOND	Amusement Parks
HAROLD MOYER	THIRD	Hershey Park

## HONORABLE MENTIONS

EMILY KEEBLER	Summer Fun
RUTH MOYER	Fantasyland
EARL CARVER	Old Parks
DON DAVIS	Willow Grove Park
POLLY CURTIS	Unusual Stop/New England Vacation

Thanks to all for their efforts in the 90 degree heat. August's subject is a *single real photo postcard of a person or group of people (but no relatives)*. September is a *single card of a school house*.

## WINNERS

Door prizes - 100 PC sleeves and 10 PC pages - were won by Eugene Finegan and Walter Mowrer. Harold Fry won the 50/50.

## MEMBER/DEALERS

Set up and selling were Gordon McKinzie, Norman Zimmerman, Howard Steinberg, Dick Bishop and Mike Middleton - just like a mini-show, from 6 to 7:30, during the 10-minute breaks and afterwards until 9PM.

## AUGUST PROGRAM

August is our ANNUAL FREE-FOR-ALL. It means that everyone may bring a box, album, share a table or a whole table to sell and trade postcards, trade cards or anything else *paper or local*. There are always surprises and bargains at our FREE-FOR-ALL; plenty of fun and the usual \$2.50 per 8' table rent is canceled. A short session will be set aside during the business meeting to discuss the Expo and our published book.

## JULY SPEAKER

Lewis Bechtold appeared in his Union suit, complete with kepi, for his illustrated talk about Gettysburg. He specifically spoke about the Gettysburg photographer, Wm. Howard Tipton and his contributions to the postcard industry. The audience enjoyed the presentation.

The optional full-color front page for the August edition of THE CARD will not be offered this year.



Unsere Zwillinge! Der  
schönere ist der Thomas,  
der andere ist Robert!

Our twins! The nicer one is Thomas, the other is Robert. You'll find more beauties like this at the

## LCPC 6th POSTCARD EXPO FARM & HOME CENTER

Saturday, August 15, 9 am to 6 pm

- \* DEALERS WITH 1,000's of CARDS
- \* GREAT EXHIBIT BOARDS
- \* CLUB'S BOOK ON SALE
- \* GOOD HOME COOKING
- \* FREE ADMISSION
- \* AIR CONDITIONED, NO STEPS
- \* PLENTY OF FREE PARKING

## '98 EXPO DEALER LINE-UP

A sneak peek at our Expo Program (free at the door to all attending) reveals the following member/dealers - some new faces as well as those who've been with us for our previous five Expos: Agnes Cavallari, Lee and Shirley Cox, Roy and Helen Cox, Leo and Helma Frantz, Marilyn and Howie Gottlieb, Harris and Jayne Gray and Jere Greider. Mary and Reuel Hartman. Charlie and Nellie Hut-tunen, Bob and Mary Kurey, Jim Luty, Mike Middleton, Jay Miller, Jim Morrison and Ardena and Bob Newsome. Jose and Aida Rodriguez, Dolores and Leon Rowe, Chris and Pam Russell, Dede and Daisy Schaeffer, Maria and Win Schurz, Don and Connie Skillman, Howard Steinberg, Barbara and Lum Trovei, Don Wachter and Bill Wolfers-berger.

Exhibits may be brought Fri. eve from 6 to 7. They must be in the hands of the Exhibit Committee before 8:30 am Sat., Aug. 15. Call Barb at 684-5331 or Earl at 684-3069



# ZELTENREICH BLDG.- 90 YRS.OLD

## N.H. Congregation dates to 1720's

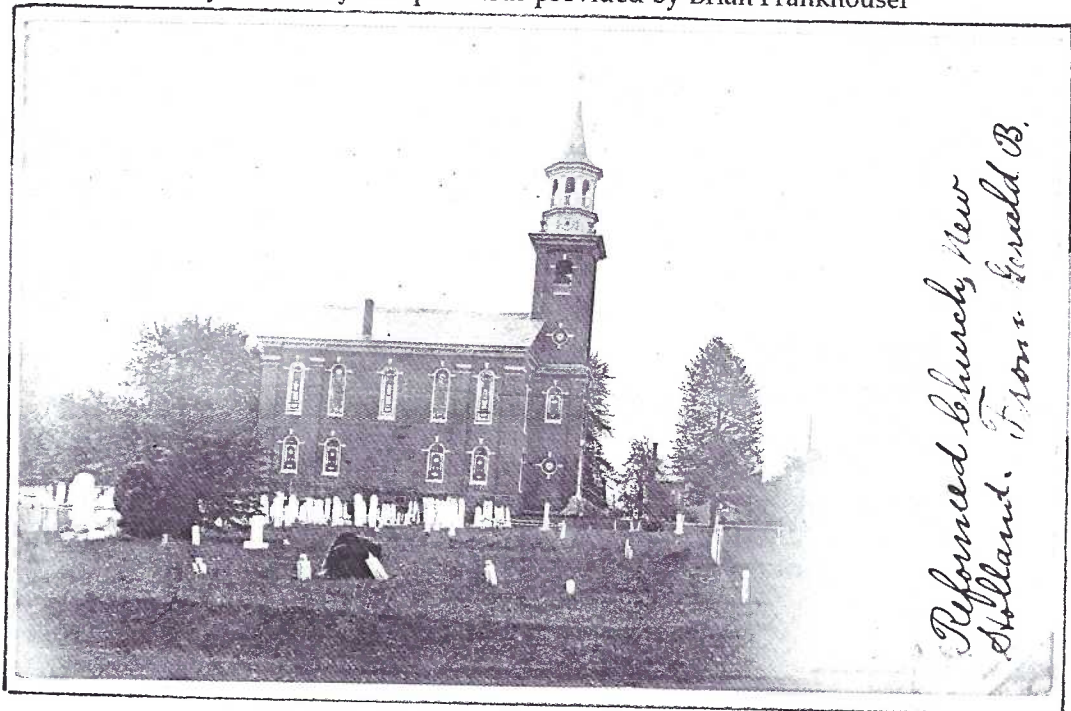
This month marks the 90 year anniversary of the dedication of the Zeltenreich church building, which is still in use today. The congregation is one of the oldest in eastern Lancaster County, with its formation originating in the late 1720's. The Zeltenreichs built or completely rebuilt their primary worship center four times. Three of these buildings are pictured on post cards.

The first church building was a log structure built on the northwest corner of what is now the intersection of Peters Road and Hollander Road in Earl Township between Intercourse and New Holland. By the last decade of the eighteenth century the building was dilapidated, and a decision was made to move the church to a more central location for the members. Construction of the second church building began in 1799 in the town of New Holland. Since their place of worship was no longer located on land once owned by George Seltenreich, the congregation became known as the German Reformed Church of New Holland.

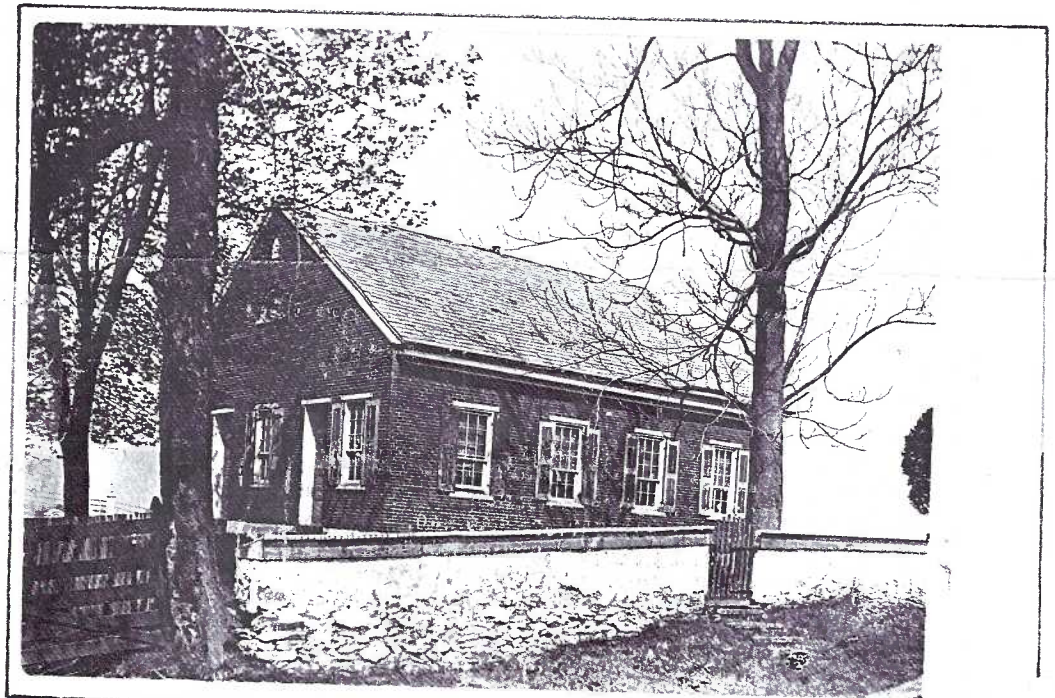
By the late 1830's there was dissension within the church regarding whether to conduct the worship service in English or German. Those favoring German moved back to the original location of the Zeltenreich church (in Earl Township) and completed construction of their third church building in 1841.

By the beginning of the twentieth century the third church building was no longer large enough or modern enough to serve the congregation effectively. The building was razed in 1907, and the congregation began construction of a new place of worship for the fourth time in their history.

Story written by and postcards provided by Brian Frankhouser



This early real photo of the Zeltenreich's second church building has a Lancaster Photo Supply House undivided back. It was probably an early effort by William M. Stauffer, who was a member of this church, and sold in his drug store. The building pictured is now the home of the Saint Stephen United Church of Christ.



This early real photo of the third Zeltenreich church building has a divided back, so the photo must have been taken shortly before the building was torn down. The post card spent over 90 years in a New Holland home, but was sold at public auction last Autumn. After going through several dealers' hands, it moved from a Camp Hill dealer back to New Holland (thanks for the tip, Bill Buckwalter!).





**ZELTENREICH REFORMED CHURCH.**  
 Located 2 miles southwest of New Holland, Penna.  
 Organized previous to 1745.  
 Second building erected 1842.  
 This, the third building, dedicated August 16, 1908.

Published by Wm. M. Stauffer, Druggist.

**Zeltenreich**  
 continued from page 2

William Stauffer, "the father of New Holland view post cards", published this scene of the current Zeltenreich church building in 1908. This post card is somewhat scarcer than his other New Holland church post cards because they had been reprinted several times before this was first published.

## FINAL CHANCE TO ORDER BOOK LCPC's "Windows to Our Past"

will be distributed at our 1998 Expo, August 15, at the Farm & Home Center. Your Book Committee aimed for this date a year ago and Science Press of Ephrata has cooperated fully in meeting its deadline. As announced at the outset, *there will be only 2,000 books printed* = all in a hardcover, deluxe edition. *There will be no other books, in any form.* If you haven't place your order, you are urged to use the form enclosed with this issue of THE CARD. In fact, we have shortened the issue to six pages in order to include this form and stay within the mailing rate. Please take advantage of this final opportunity. At this writing nearly 800 copies have been sold. That's more than 1 for every 3 printed - and *this is before anyone has seen a final copy!* Try your best to pick up your orders at the Expo from 9 to 6 (no admission charge this year) and avoid the unnecessary \$7 postage per book.



### WANTED

**Alligator Border Cards  
 by Langsdorf**

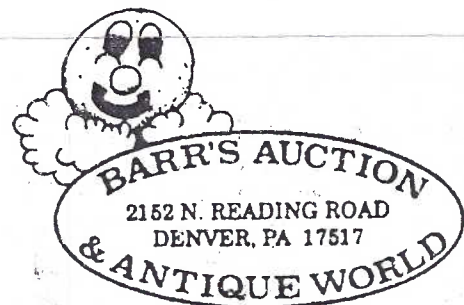


Need to complete collection:  
 #S521,522,534,535,537,538,539,540,  
 563,573,577,582,588,601,608,609,613  
 29 diff. dups. available



**David W. Kalles, LCPC#492**  
 24 Tamarind Drive  
 Key West, FL 33040  
 Ph. 305-294-3418 (8-11 pm EST)  
 FAX #305-2948182

**John Klein  
 Postcards**



2152 N. READING ROAD  
 DENVER, PA 17517

**Exit 21  
 Pa. Turnpike**

**Saturday 10-5  
 Sunday 8-5**



# ROUGH & TUMBLE

It's not a group of neighborhood football players. So, then, why the name?

Threshermen, saw mill operators, farmers and road builders used the *traction engine* for the motive power to operate all of their activities. Roads and bridges were not of the improved type as they are today. It was necessary to move in rough fields with rocks, gullies and ditches and over insecure bridges. It was necessary to operate in all kinds of weather. They engineered their way to the work site and back home. They were Rough and Tumble Engineers!

## The association's purpose

...to perpetuate the engines and machinery by purchasing them and related advertising matter and pictures; provide a museum and adequate housing, thus forming a life-size collection; hold annual reunions and field days offering active demonstrations of the engines.

they built could be found throughout the USA. It was a true statement that the sun never set on American engines, threshers and farm machinery because they were imported to the great grain fields of Russia, Turkey, South Africa, Argentina, Mexico and many other countries.

## Steel cleated iron drive wheels

Pa. Governor Gifford Pinchot was successful in an attempt to build 50,000 miles of narrow, inexpensive two-lane macadam highways throughout the Commonwealth. This caused problems. The large steam and gasoline traction engines with their steel cleated iron wheels would grind through these early highways, especially on hills, as they pulled the threshing rigs from farm to farm.

Attempts had been made to keep the big rigs off the paved roadways. As a result, threshermen, farmers and equipment dealers, with the aid of Mr. Arthur S. Young, organized *The Pennsylvania Threshermen & Farmers Protective Association* to bargain with the Commonwealth for reasonable law enactment. County Chapters composed the organization. The Lancaster and Lebanon Chapters were the most active.



From left to right:  
fine examples of steam engines  
by Baker, Keck Gomnerman,  
Port Huron and another Baker.

## The importance of steam engines

The giant machines had been serving the country since the 1880's. The vast unbroken prairies were transformed into fertile fields. The threshers helped make America the Breadbasket of the World.

The great Northwest Territory and beyond was opened to civilization as rocks were drilled, quarried, crushed, hauled and graded by steam engines of all sizes. Our mammoth network of roads from the Great Lakes to the Gulf was steam rolled into ribbons of comfort. Traction engines were used extensively in railroad building, pulling graders and trains of dump wagons. The lumber industry relied on them for hauling immense loads of logs on ponderous wagons while still other steam engines drove saw mills for lumber to build homes, schools, churches and factories.

Names such as Case, Huber, Frick, Geiser, Farquhar, Osborne, Westinghouse, Stevens, Avery and Deering; McCormick, Baker, Deere, Oliver and many more became household words where working men lived. The factories

Gasoline tractors soon had rubber tires. The PTFPA came to an end in 1948 and steam tractor engines were fast becoming history.

## Arthur S. Young Co., Inc., Kinzers, Pa.

In 1916 Arthur S. Young began working on steam engines in his Kinzers shop along the Lincoln Highway in eastern Lancaster County. Art was good at his trade. Among other jobs, Art perfected a self-tying pickup baler invented in 1937 by Lancaster threshermen Edwin B. Noit. It met with world-wide acclaim and was the fore-runner of the one manufactured by New Holland Machine Co. which purchased the manufacturing contract in 1940.

The disbanded PTFPA, with \$100 its treasury had a picnic in 1949, offering free lunches to the public. The picnic was on the grounds of the Arthur S. Young Co. on May 14. Steam engines were fired up, machinery was operated and everyone had an enjoyable time. The group was fired up, too, and so began an annual picnic, enlarged each year, and named the Rough & Tumble Engineers



## Checklist

### ROUGH & TUMBLE ASSOC. PCs

Unknown publisher b/w, all are standard 5 1/2" wide and vary in height but shorter than standard 3 1/2" with reverse "Greetings from R & T Engineers...."

On the Test (crowd watches; autos far away on Rte. #30)  
Waiting Their Turn (illus.)

no caption (saw mill demo before crowd)

no caption (crowd, shed, lg. shed to right rear)

no caption (aisle thru crowd, lg. engine close rt.)

**Dexter Silvercraft** b/w for Zimmerman Aerial Photos, Intercourse, Pa. (illus.)

77943 R & T Engineers Reunion

**Koppel** for James E. Hess, Lancaster, Pa. (color)

S16554 ...many on display at Arthur Young's...

**Koppel** for Zimmerman & Sons Natural Color Service

S17821 Full scale saw mill

S17822 Parade of steam engines

S17823 Three steam engines

S17824 Case steam engine

S17825 Typical old time grain flailing scene

*NOTE: the above views are all on the original Arthur Young site, south of the Lincoln Hwy. and north of the Pennsylvania Railroad line.*

**Dexter** for James E. Hess, Lancaster, Pa. (color)

(same numbers also made for Mel Horst, Witmer, Pa.)

77590-B Amishman and boys passing in revue

77591-B ...Eclipse (Tractor) Mfg. by Frick Co...

77592-B ...Peerless Steam Tractor...

77593-B Amishmen demonstrating...saw mill...(illus.)

77594-B Amishman...engineers his...tractor...(illus.)

77595-B an antique Frick steam tractor proudly...

77596-B Amishman drives his antique tractor...

**MCA, McGrew Color Graphics**, Kansas City, Mo., for Anthony L. Iezzi Photo Service, Laureldale, Pa.

36127391 1899 "Cabbage-stack" Frick steam traction...

36127394 1903 Peerless steam traction engine...

*Editor's note:* The odd number of cards in each series suggests our list is missing a number of cards. Contact with the Arthur Young family and other original officers in search of these missing numbers has proved fruitless. In fact, it's amazing how few of these prominent members of R&T have any of the postcards! Their museum contains hundreds of photos, but barely half of the cards listed.

## Rough & Tumble

continued from page 4.

Historical Association in 1950. Art Young was its first president.

The third week of August was chosen for the reunion since there was ample grain for threshing. By 1958, the Association moved to the north side of the Lincoln Hwy. They wanted to expand and erect several buildings to shelter the Steam Age. Today you can ride a miniature steam railroad around these buildings, see lumber being sawed by steam power, clothes being washed by steam power and hundreds of miniature steam engines, each operated by its owner.

Each year usually features a particular make of early gasoline engine (such as Ford) and, should you not be able to make the *August Threshermen's Reunion*, you have the options of a *May Steam Up* or the *Time of Harvest* (this year on October 9, 10). This year is also the 50th Anniversary of the Reunion - it might be the one time you ought to attend. For more information, write Rough & Tumble, Box 9, Kinzers, Pa., 17535. Phone 717-442-4249 or talk to Harold Moyer, for an R&T member's opinion.

### Rough & Tumble Engineers 50th Anniversary Threshermen's Reunion August 12-15, 1998

The most complete steam and gas show in the East, at Kinzers, between Lancaster and Coatesville on Route #30 (Lincoln Hwy, east).

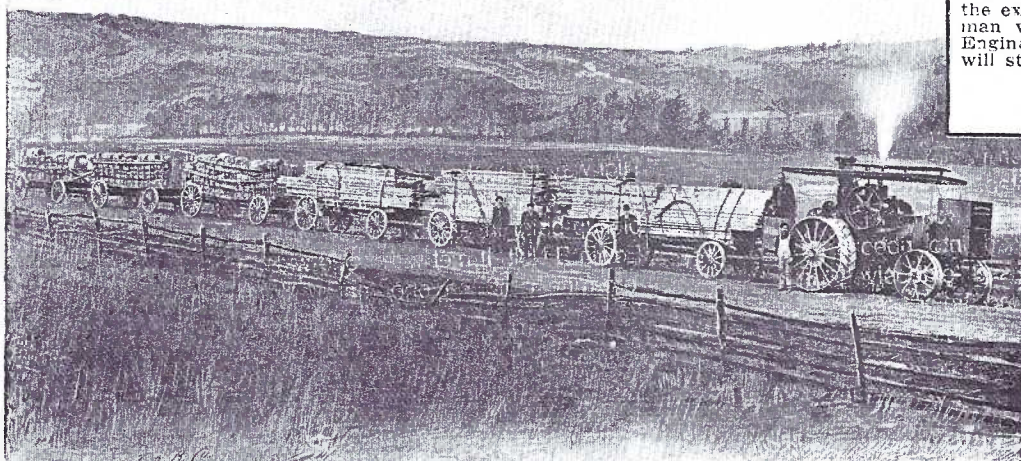
Everett, Pa.  
The Huber Manufacturing Company,  
Marion, Ohio.

Gentlemen: The load this photograph was taken from was made up of three wagons loaded with lumber and three loaded with staves. There were 13,500 feet of green white pine weighing at least 54,000 pounds, 34,000 staves weighing at least 20,400 pounds, the racks holding the staves would weigh 3,000 pounds, making a total load of 77,400 pounds, in addition to the weight of the six wagons. This train was hauled eighteen miles over the Sidling Hill and Rays Hill Mountains, and we hauled it over grades running from 12 to 15 per cent. It was hauled with a 25 H. P. Huber Contractor Engine.

I have been using Huber Engines for hauling for three years. My experience, which has been considerable hauling with horses and with traction engines, shows that I can do my hauling with the Huber Engine for less than one-half the expense with horses; and I will say that no man will make a mistake in buying a Huber Engine if he wants to do heavy hauling, for it will stand the knocks and do the work.

Respectfully yours,

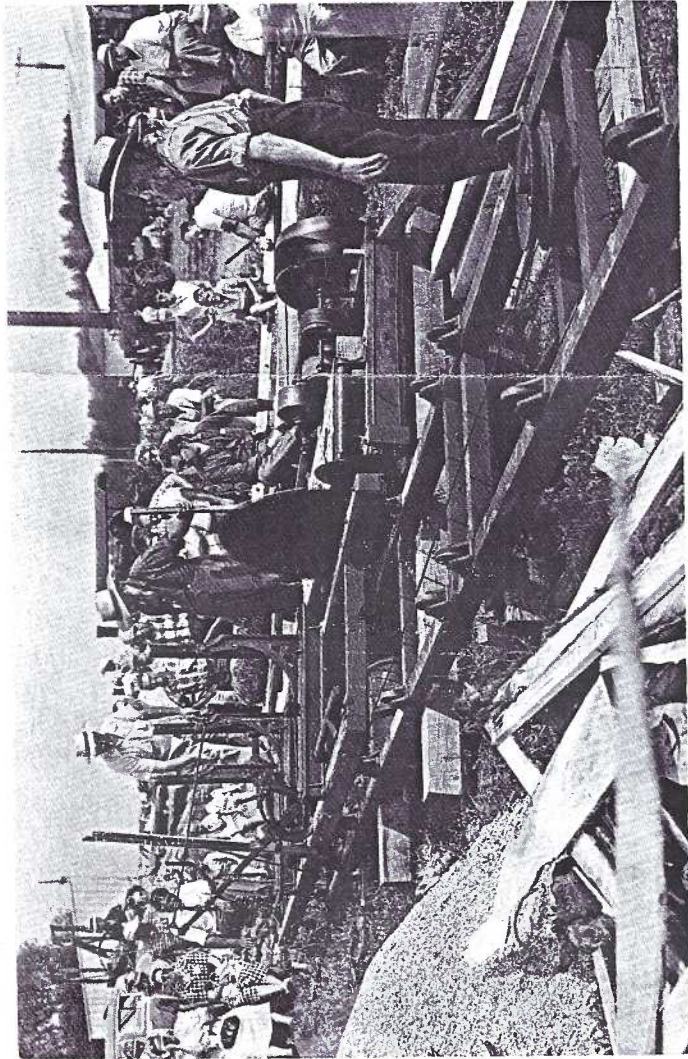
W. W. M'DANIEL.



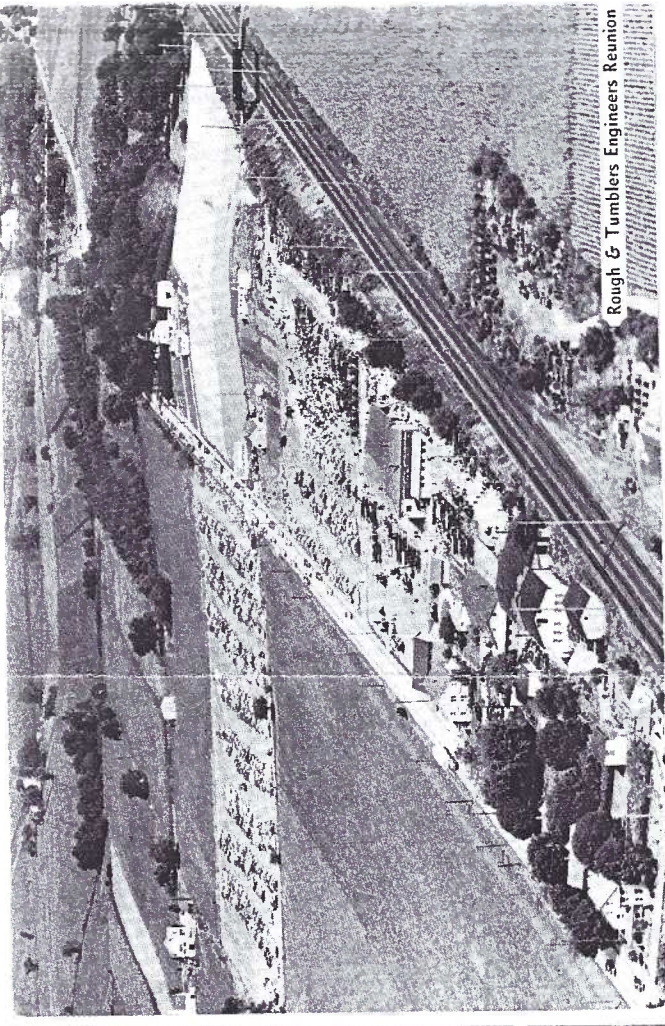
The 25 Horse Power Huber Contractor Engine.

W. W. M'Daniel of Everett, Pa., offered this testimonial for his Huber steam engine. It appears on the reverse of this b/w divided back PC by an unidentified publisher.



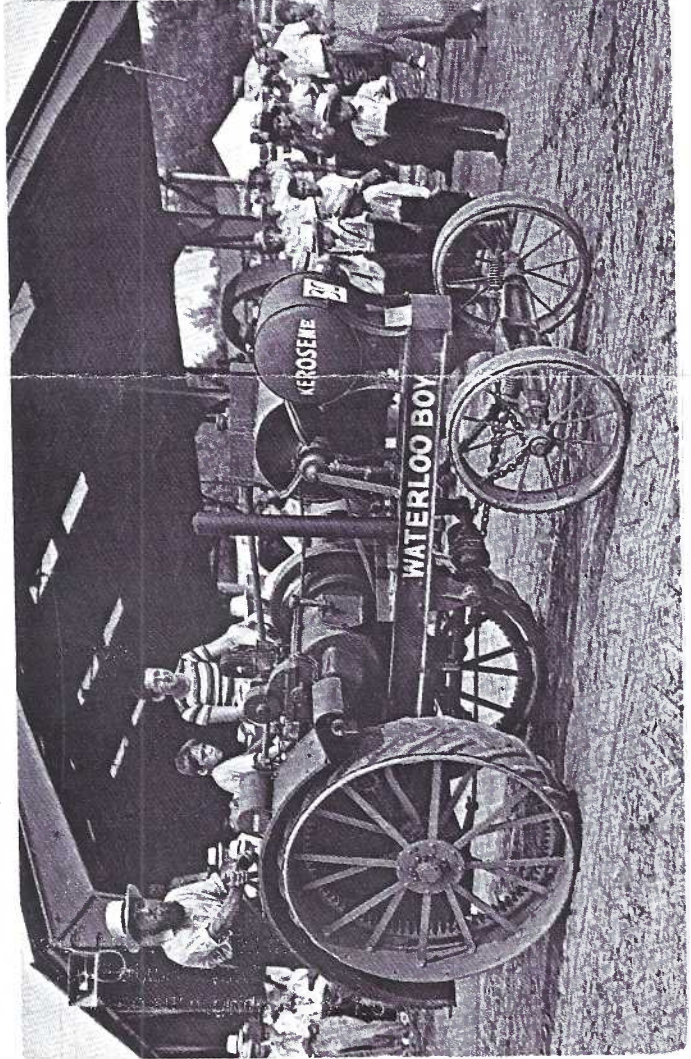


The saw-mill operation is now housed under roof. Above, right, is a b/w aerial view of the original site on Art Young's property. Over-flow parking lot north of Rte. #30 was soon purchased for

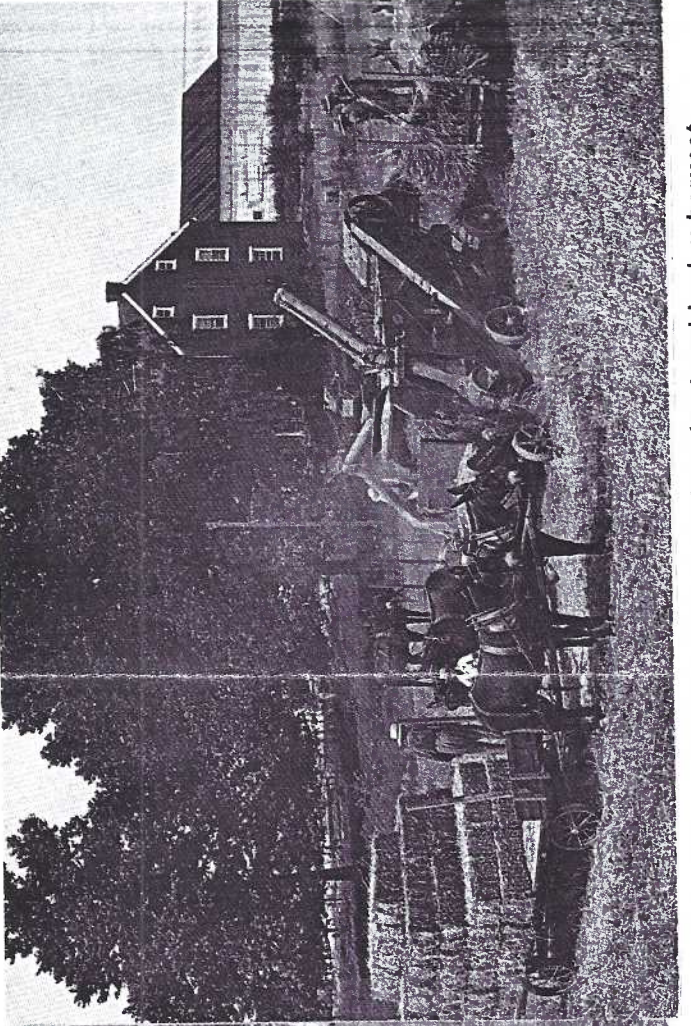


Rough & Tumblers Engineers Reunion

the new site. Elmer B. Zimmerman, one of the founders of the Intercourse Glider Club, was the first pilot to be licensed by the Lancaster Municipal Airport and took a number of aerial views.



#77594 by Dexter for Jas. Hess and later for Mel Horst.



Amish still use hand-fed threshers for wheat and barley harvest. Tichnor #26311 for Mel Horst (not an R&T view).