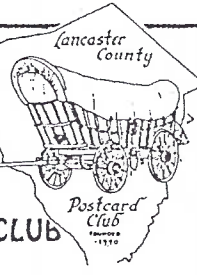


The Card

MONTHLY PUBLICATION OF
THE LANCASTER COUNTY POSTCARD CLUB
LANCASTER, PENNSYLVANIA



Sept. 1998 Vol.9, No.9, #105

NEXT MEETING

September 21, 1998 7:30 pm

Buy, sell, trade from 6 pm

Meets 3rd Monday
Farm & Home Center
Routes 30 and 72
Lancaster, Pa.

Yearly membership is \$8 (\$2 extra for each member at same address). Membership year is April 1 to March 31. Make check payable to: LCPC, c/o Dorothy Fry, 1050 Kleinfeltersville Rd., Stevens, PA., 17578. Advertisements are: \$15 full page, \$8 1/2 pg., \$5 1/4 pg., prepaid with copy. Classified ads are FREE to members, but please submit your ad for each issue. Send all ads, correspondence and change of address to Jim Ward, editor, 1795 Kleinfeltersville Rd., Stevens, PA. 17578-9773, phone 717-721-9273. **THE CARD** staff includes Dorothy Fry and Carol Dennis, proof readers and Gerald Hostetter. Harold and Ruth Moyer handle the mailings. Recent circulation averaged 229 homes and 14 postcard clubs with whom we exchange.

PROGRAMS

The August program was Free-for-All and eleven members took advantage of free table space to sell their dups and odds n' ends. They were: **Mary Darrenkamp, Elizabeth Graver, Ruth Moyer, Dick Bishop, Bud Heim, Paul Smoker, Don Davis, Walter Mowrer, Bill Buckwalter, Frank Coho and Jim Ward.** Their "program selling time" was shortened by the longer than usual postcard competition, but most had been set up at 6 pm (a few at 5:30 since the room was opened early for book sales). But please remember, dealers - we rent the room from 6 to 9 pm and you should NOT be setting up before 6 pm.

The 50/50 was won by **Dot Fry.** (Harold won in July!) Door prizes (100 PC sleeves and 10 PC pages) were won by **Bill Weikert and John Long.**

Jim Ward will be in charge of September's program. The focus will be on *Windows to our Past*, our recent publication of 501 postcard views. The membership is urged to attend and offer input to the discussion.

Some items to be covered:

- *Choice of publisher - why it was Science Press
- *Postcards and information submitted
- *Duplicate stockpile
- *Final billing from publisher
- *Related expenses
- *Complimentary copies
- *Reasons (pro and con) for a Volume Two.

IN THE FUTURE

October: Anne Steinberg - Teddy Bears on postcards
November: Dick Julian - Worldwide Lighthouses on PCs
December: Annual Christmas Party

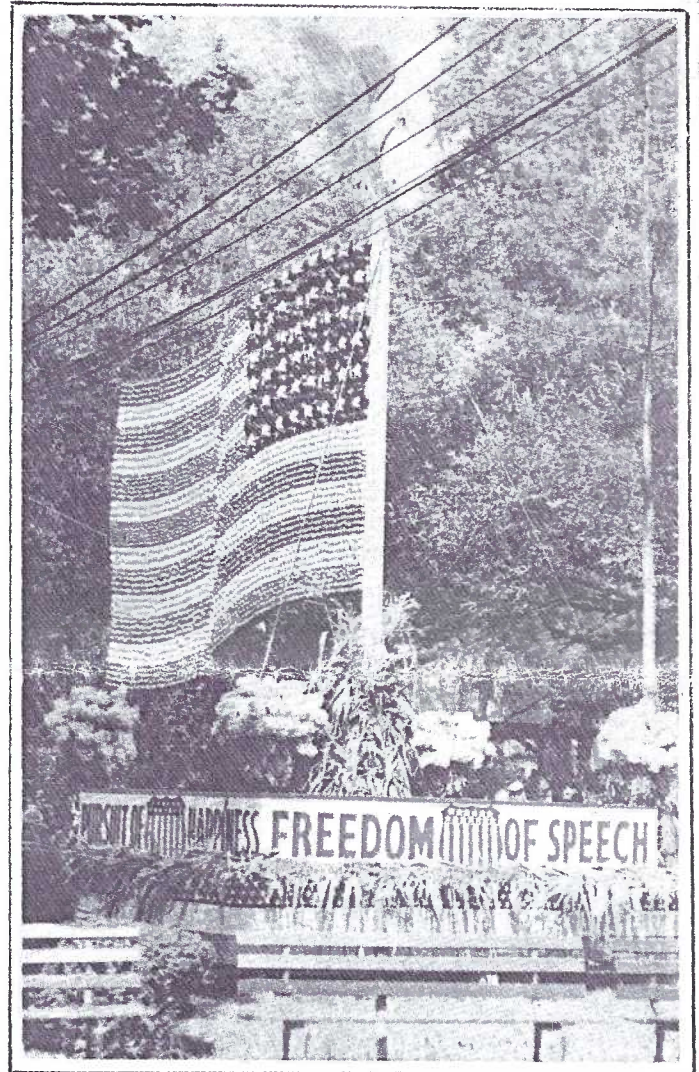
MONTHLY EXHIBITS

Sixty members enjoyed *single real photo postcards showing people* of all descriptions. Each member's exhibit was shown on the opaque projector and a description was given over the microphone.

RAY BUBB FIRST John Muir, the Naturalist
HAROLD MOYER SECOND Almost Ready for Winter
(boys preparing a mammoth wood pile)
JIM WARD THIRD My Own Make
(amateur drawing with photo super imposed)

HONORABLE MENTIONS

FRANK COHO French Lady with Large Hat
CAROL DENNIS Lady in Studio Pose
(she just came out from bathing in the ocean)



This color card, at first glance, appears to be a linen postcard and was, in fact, posted during the Linen Era on July 25, 1944 at Allentown to the Furlows in Sinking Springs, Pa. However, it has a smooth "feel", (but it's not a chrome card). The mid-line on the reverse reads "Natural Color Photography and Gelatin* Reproduction by Holbein Printing, Allentown, Pa. (*it is not a gelatin finish used on postcards.) The reverse description reads:

Natural Color Photo

Dorney Park, Allentown, Pa.

The flag shown is a special Labor Day decoration. It was made of thousands of white and red apples for the stripes. Egg plant was used for the blue field and squash was used for the stars. Thousands flock to the amusement park each year to see the designs made entirely of fruits and vegetables for Labor Day holiday.

Labor Day postcards continue inside.

RUTH FRANKHOUSER

Edna

(lg. letter composed of many ladies' faces)

DOT FRY

Man, Wife and Large Ferns

(the plants *might* have been a lovers' screen)

RUTH MOYER

Ready for Snow Battle

(lg. group of boys loaded with snowballs)

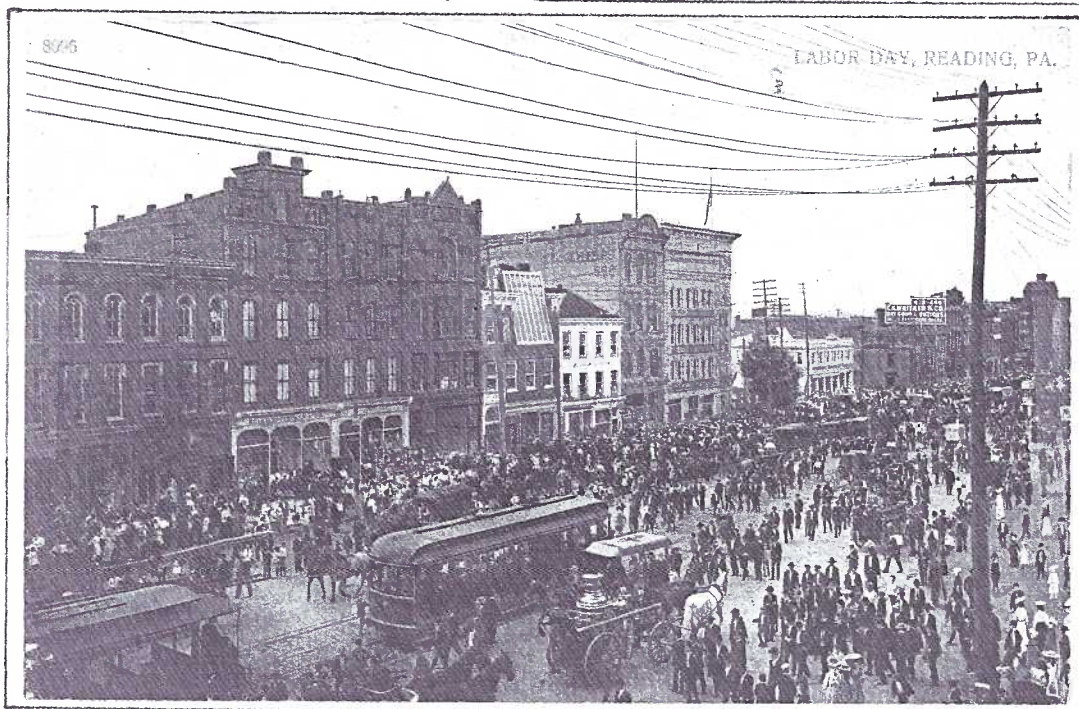
Polly Curtis also showed several western herces and **Don Davis** showed a S.F. earthquake view, none of which were real photo postcards.

Single card for September: **SCHOOL HOUSES** and single for October: **HALLOWEEN TRANSPORTATION.**

LABOR DAY

Labor Day was suggested in 1882 by a labor organization (would you expect anything else?) The United Brothers of Carpenters and Joiners of America observed September 5 with a parade and picnic in New York City. It wasn't until 1894 that it became a national holiday by declaration of Congress.

The Lounsbury set, #2046, contains four cards, the most sought-after we've shown to the right. It's obvious desirability lies in the fact that not only is Labor Day personified, but also Thanksgiving, Christmas, New Year, Washington's Birthday and the Fourth of July.



These were the major holidays when the set was copyrighted in 1907. (But why omit Easter? Was the death of Christ considered more sacred than his birth?)

Scarce as the Lounsbury set of four are, a Nash set of two is nearly as scarce. These are the only sets we're aware of, so, to expand your Labor Day collection, you must search for local Labor Day cards.

Here are a few local Labor Day views. From the neighboring city of Reading, we see two. The color PC shows a crowd in the square, surrounding trolley cars, an early fire engine and several horse-drawn vehicles. It was printed in Germany for A.C. Bosselman & Co.

The real photo view below it is conveniently dated on the front of the card and also shows Reading's square. The parading formations include the firemen and horse-drawn engines. Though it lacks an address, "Aunt Clara" points out "This is part of the parade we seen on Labor Day and they have about fifteen other views that are nice". So, someone, somewhere ought to be able to chronicle this 1909 Reading celebration quite nicely





LABOR DAY, BERWICK, PA.

LABOR DAY continued

On this Labor Day view of Berwick, Pa. it looks like the weather has yet to put a damper on the celebration as witnessed by the dozens of umbrellas. The photo is copyrighted 1907 by Walter M. Gult or Sult ?. It's an unused b/w card by the Albertype Co. of NYC.

Though this message is not on a Labor Day PC (it's a view of Commerce Street in Bridgeton, NJ), the card's reverse, most certainly places it in a Labor Day collection. It reads - "You will see this is mailed on a float in the celebration and I'm to be one of the guys on it. Some class. Wish you could have come over." His message is authenticated with the stamped lines below **MAILED ENROUTE ON POST OFFICE FLOAT BRIDGETON LABOR DAY CELEBRATION.**

The Curt Teich card was canceled in Bridgeton, Sept. 7, 1914 at 5 PM.

SPACE FOR ADDRESS HERE
you will see
this is mailed on a
float in the celebration
and I'm to be one
of the guys on it
Some class, wish you
could have come over.



MAILED ENROUTE ON POST OFFICE FLOAT
BRIDGETON LABOR DAY CELEBRATION.



Our final Labor Day view is an unused real photo with most fortunate IDs = not only have we a clearly lettered banner hanging from the iron bridge identifying the holiday, but we can read the sign on top of the bridge with higher magnification, "The Massillon Bridge Co., 1901, Massillon, Ohio".

The drivers are doing their best to steer at least five teams through the muddy streets. The river would be the Tuscarawas. Massillon is very near the Pro Football Hall of Fame south of Akron.

Need a challenge? Labor Day postcards may be the answer = two sets of greetings (total of 6 PCs) and who knows how many elusive "local" Labor Day views?

1998 EXPO

Walter Mowrer, the Expo Chairman, once again performed a magnificent job in supervising our annual postcard show. The local and national publicity was handled by Jere Greider, the dealer tables by Jose Rodriguez and program and incidental office jobs by Jim Ward. Barabra Mowrer and Earl Carver headed the Exhibit Committee (see separate story). The club's thanks go to these people as well as all members who were there when needed - to set up tables, easels, road signs; to handle entrance info (no admission was charged this year) and to clean up at the end.

Note should be made, too, that Ruth and Harold Moyer and family performed with their usual outstanding home cooking in the kitchen. It's great to count on folks like them in our club.

560 IN ATTENDANCE BREAKS LOCAL RECORDS

Most agreed that the debut of *Windows to Our Past* had some bearing on the attendance which set a new high for LCPC. Unlike some shows that estimate attendance, we have always kept a very accurate count of door prize tickets distributed at the door. Our first show in 1993 was a beginner's success story with 502 attending. (Interim 1-day shows have always exceeded 400.)

Quite frankly, more than 560 were present, as committee members didn't receive tickets and many had some time to shop the tables as well as see the exhibits.

Dealers were pleased to see the attendance continue throughout the day. They were also the recipients of the door prizes, as LCPC issues gift certificates (\$5 each) redeemable at any dealer's table the same day. We then reimburse the dealer with cash.

EXPO EXHIBITS

Barabra Mowrer and Earl Carver once again chaired this part of the Expo. Last year there were fewer exhibits than in 1996. This year there were three fewer than in 1997, but there were several 2-board exhibits and so the public had about the same number of cards to study and enjoy in 1998. The judges, as well as many advanced collectors and dealers, commented on the increasingly better caliber of exhibits.

Perhaps, in addition to the unique Exhibit Award Postcards each participant is given, we might consider monetary awards for 1999. It's certainly worthy of discussion, but let's have a decision far in advance so everyone has an equal chance to vie for top honors.

Initially, the Book Committee had planned to have its distribution tables at the back of the Expo room next to the exhibit area. It was for this reason, the Exhibit Committee chose to have just three categories, utilizing less floor space. As it turned out, the books were distributed in the lobby.

(2) = indicates a two-board entry

AWARD WINNERS

BEST of SHOW - Howard Steinberg's Rocky Springs
PEOPLE'S CHOICE - H. Steinberg's Rocky Springs

LOCAL VIEWS

HOWARD STEINBERG First Rocky Springs(2)
JIM WARD Second Salesmen's Appointment Cards(2)
WALTER MOWRER Third Local Railroad Stations

Honorable Mentions

EARL CARVER	A Look at Lancaster, Pa.
EARL CARVER	Marietta Memories
DON DAVIS	Main Streets of Pa.
DON DAVIS	Willow Grove, Pa.
BARBARA HEIM	Bainbridge
BUD HEIM	Greetings from Bainbridge
EMILY KEEBLER	Local Views of Lancaster City
BARABRA MOWRER	Local Street Views

PEOPLE

JIM WARD	First	Studio Props
ROBERT KRAMER	Second	Theodore Roosevelt(2)
JIM MORRISON	Third	Morrison Cards(2)

Honorable Mentions

RAY BUBB	People of the Philippines
EARL CARVER	People of the Past
DON DAVIS	People
BARABRA MOWRER	Happy Summer Days
WALTER MOWRER	Childhood Day

HUMOR

JIM WARD	First	Nose Thumbers(2)
DON DAVIS	Second	Tom Browne
EARL CARVER	Third	Funny Fisher Folks

Honorable Mentions

SHIRLEY BUBB	The Bare Facts
BARBARA HEIM	Molly Brett
ROBERT KRAMER	Humor 1900-1907
BARABRA MOWRER	Feline Humor
WALTER MOWRER	Barnyard Humor

Judges were **Dolores Rowe**, **Jose Rodriguez** and **John Klein**. All 27 exhibits were studied carefully by each of the three judges for:
Presentation and Originality = 1/3
Completeness and Rarity = 1/3
Postcard Information = 1/3

Only First Place exhibits are considered for the Best of Show award.

We thank the judges for their time and effort.

BUS TO METRO SHOW

Word from the Morlatton Postcard Club extends an invitation for LCPC members to use a bus going to the Metropolitan Postcard Club's show this fall. Basic information is included here. Should you wish particulars, contact Morlatton's president, **Leon Rowe** at 215-444-0641, 123 Magnolia St. Kennett Square, Pa., 19348. **Leon** and **Dolores** are also LCPC members #209 and #210. Members of Susquehanna Valley and York clubs have also been invited.

WHEN: Friday, November 13, 1998, 7:30 AM

WHERE: Next to Eden Resort, Rte. #272 north (Oregon Pike) where the Eden Theater used to be (gas station under construction). Park behind new building.

DESTINATION: Metropolitan Postcard Show, Hotel New Yorker, near Madison Square Garden, NYC

COST: \$22 (bus and gratuity); \$1 admission (discount of \$2) to show; cost of meals incl. return stop at Mastories.

DETAILS: Executive Coach is air-conditioned and has a bathroom aboard.

RETURN: To parked cars about 10:30 PM

DEADLINE: Reserve your seat w/ \$23 check by Oct. 15. Make check payable to Morlatton Postcard Club.

NEW MEMBERS

#496 Jack E. Bertolette 1601 Carlisle Rd., Camp Hill, Pa., 17011. Ph. 717-761-2586. General interest.

#497 Kimberly Wood 1173 Scalpy Hollow Rd., Dru-
more, Pa., 17518. Ph. 284-4068. General interest.

#498 Peggy Sheets Manning 3059 Essex Pl., Lan-
caster, Pa., 17601. Ph. 898-2027. Collects Holtwood and
McCall's Ferry.

#499 Paul Rhoads 475 Wabash Rd., Ephrata, Pa.,
17527. Ph. 336-7298. Collects local views.

#500 Al Lutz, Jr., 1973 Millport Rd., Lancaster, Pa.,
17602. Likes local views. (Al is moving and new phone #
is pending.)

#501 George Graham 27 N. Broad St., Lancaster,
Pa., 17602. Ph. 394-2152. Lancaster, Thousand Is. region
and greetings.

#502 Wanda Graham. Same as George.

#503 June E. Caldwell, 394 Pilottown Rd, Peach
Bottom, Pa., 17563. Ph. 548-2579. So. Lanc. County

#504 Don Adams 1732 Ridgeview Ave., Lancaster,
Pa., 17603. Ph. 392-6769. Likes Lancaster area; 1930's to
1960's big bands and ballrooms; trains- toy & prototype;
vacation sites and cities; local advertisements.

#505 Jacob Fisher 3320 Marietta Ave., Lancaster,
Pa., 17601. Ph. 285-5092. Goat cards and local views.

#506 Pauline Fisher. Same as Jacob.

#507 Frederick W. Stone 805 Chickies Hill Rd., Co-
lumbia, Pa., 17512. Ph. 684-2009. Local views, "all kinds".

#508 Mary L. Stone. Same as Frederick.

#405 Frank Coho 134 E. Clay St., Lancaster, Pa.,
17602. Ph. 392-0001. German, composers and Lancaster
County.

Following our August Expo, we generally sign up a
few members. This showing is most gratifying. Most of
the new members showed up at our meeting three nights
after the show. Welcome to all.

As you see, we've passed another landmark in our
history - member #500. A reminder, though, we cannot
boast 500 members as many have been lost through
attrition. Present membership hovers at 300.

Rigid Plastic Sleeves

3-3/4 x 5-7/8	25/\$12.00 PP	5 x 7	25/\$22.00 PP
	50/\$20.00 PP		100/\$80.00 PP
	100/\$35.00 PP	8 1/2 x 11	25/\$28.00 PP
	1000/\$275.00 PP		100/\$100.00 PP

Semi Rigid Sleeves 5 Mil Side Load

3-7/8 x 5-7/8	100/\$12.00 PP	4 1/2 x 6 1/2	100/\$15.00 PP
	500/\$50.00 PP		500/\$70.00 PP

Poly Sleeves Postcard Size

1000 SUPER CLARITY Polypropylene	\$15.00 PP
1000-2 MIL	\$12.00 PP
500-4 MIL	\$10.00 PP
1000 CONTINENTAL-2 MIL	\$15.00 PP
500 FDC-4 MIL	\$12.00 PP

White Plastic Dividers

100/\$15.00 PP	500/\$65.00 PP
With tabs: 100/\$16.00 PP	500/\$70.00 PP

White Cardboard Boxes

POSTCARD SIZE - Half top, Full Bottom OR Full Top, Slant Front Bottom
6-10 boxes \$3.00 each PP 11-24 boxes \$2.75 each PP
STEREO VIEW/FDC BOXES 1/2 TOP (8W x 4-3/4 D x 14" L)
6-10 Boxes \$3.50 each PP 11-24 Boxes \$3.25 each PP
25 Up \$3.00 each PP

Vinyl Pages

4 Pocket (3 1/2 x 5 1/2)	SL
3 Pocket (3 1/2 x 8 1/2)	SL
3 Pocket (4 1/2 x 6 1/2)	TL
2 Pocket (5 x 7)	
1 Pocket (8 1/2 x 11)	
9 Pocket (2 1/2 x 3 1/2)	

Archival Pages

4 pocket	25/\$ 6.50 PP
3 pocket	100/\$18.00 PP
3 pocket	250/\$40.00 PP
2 pocket	MAY BE MIXED
1 pocket	
9 pocket	

ALL POSTPAID WITHIN CONTINENTAL U.S.

POLY SLEEVES 2 MIL Sizes 4 x 7 to 12 x 18

BACKING BOARD - Solid White 9 x 12 • 11 x 14 • 11 x 15 • 12 x 16

BLACK CHIPBOARD DISPLAY CASES (mounts)

BLACK CHIPBOARD TRAYS W/FLOCK INSERTS (Red OR Black)

COMPLETE SUPPLY LIST AVAILABLE

HARRIS GRAY

P.O. BOX 246 • BROOKFIELD, MA 01506-0246 • 508-867-7210

Greetings

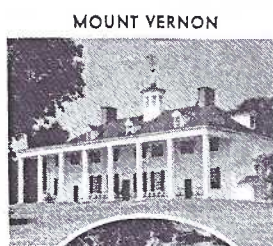
from the



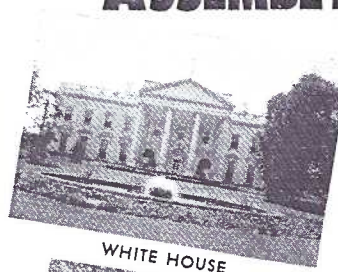
SCHOOL PATROL ASSEMBLY



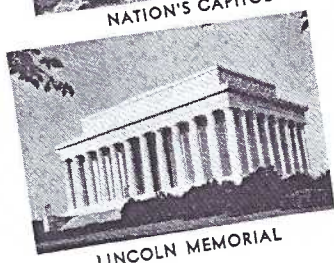
NATION'S CAPITOL



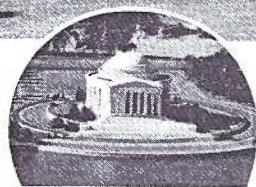
MOUNT VERNON



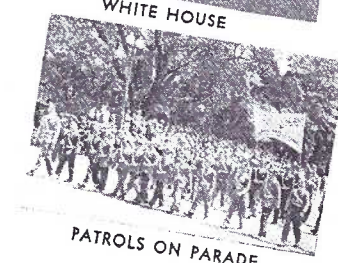
WHITE HOUSE



LINCOLN MEMORIAL



JEFFERSON MEMORIAL



PATROLS ON PARADE

MAY 13-14
1949

Uncommon School Postcard

In keeping with our September PC
competition theme - **SCHOOLS**, we
show this unusual b/w chrome from
nearly fifty years ago.

The reverse of the card reads SCHOOL SAFETY PATROL

Approximately 350,000 boys and
girls are enrolled in school safety
patrols, aided and equipped by AAA
Automobile Clubs in cooperation with
schools and police. They serve in
more than 6,000 widely scattered
communities. They daily safeguard
over 8,000,000 classmates en route
to and from school.

The Washington Monument is
shown on the reverse in the
message half of the card. Publisher
is unidentified - very likely the AAA.

LOCAL DEXTER SILVERCRAFT POSTCARDS

DEXTER PRESS, the company we know as one of the most prolific publishers of full-color chromes in the USA produced thousands of black and whites. Can you help us add to our list of 41?



Henry G.Hoeltzel published this 1930's view,#12179, as well as #12178. It demonstrates the deckle edge of some Silvercraft cards. The Hoeltzel cigar store was in the 100 block of N.Queen St.

Our club library has a fine little book (76 pgs.) written by Thomas A.Dexter,the founder of Dexter Press. Dexter published the book in 1988 shortly after his retirement. It's a tribute to the pioneering efforts of all American entrepreneurs of the twentieth century. Borrow the book (it's easy reading) and read the details for yourself.

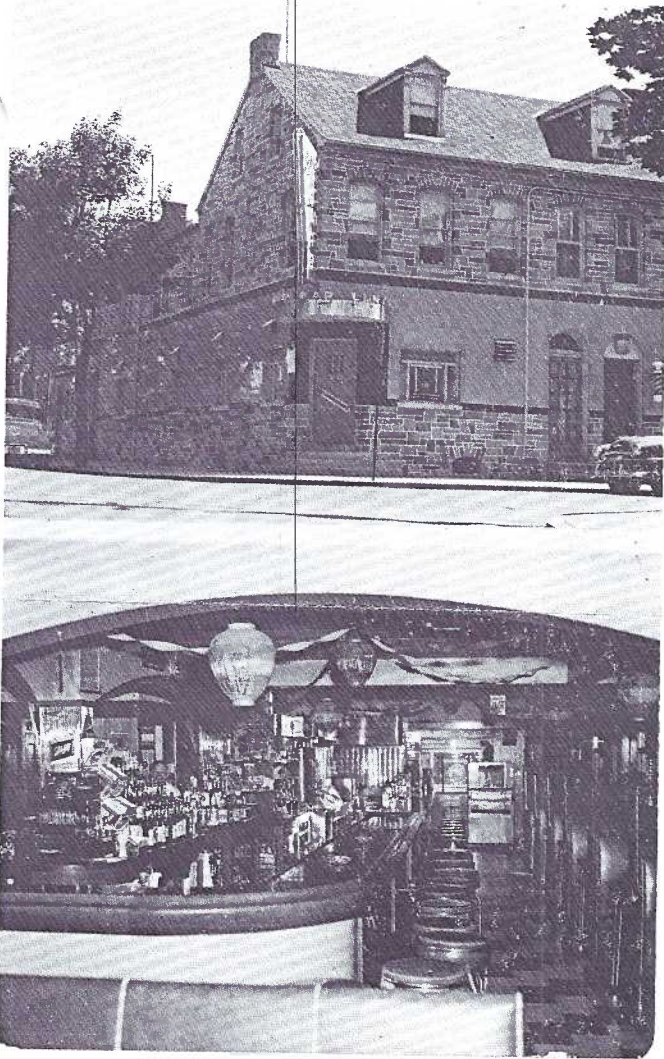
Suffice it to say,Dexter documents his company's history with memorable anecdotes. What we,the collecting fraternity desperately need,however,is a *the company's inventoried PC jobs*, such as Curt Teich has available. It must be dormant in someone's files. Dexter's sons and daughters are still living - some even in the printing business! Get out the word! Dexter numbers are in hundreds of collections waiting for documentation.

This is one of the very last local Dexter Silvercraft postcards we've seen. The photo was taken in 1952 for an article in the NEW HOLLAND LINE magazine. It was featured on the cover. We know this because the man is Edwin Frankhouser,Jr. and the lady is Barbara Ann Melligan. Both were sports enthusiasts and employees of New Holland Machine Company,publisher of the magazine.

The photographer is unknown but the negative was used by fellow employee Marlowe "Bud" Hartung. The PC was published by Pa. Farm Vacations,Denim Blue,Inc.of New Holland. Denim Blue was Hartung's own business which he operated while working at NH. The card,#93231 is also identified as 6-56-1. A second,#93232, is identified as 6-56-2.

Thanks to Brian Frankhouser (Edwin's son) for info and to Ruth and Harold Moyer for the loan of cards #93231-1 and 2.





#77245 shows the 6th Ward landmark, Jim's Cafe, at N. Shippen and E. Frederick Sts. It's the only Silvercraft we've seen with photo and publication by Jaffee Corp. of Lancaster.

For instance, **Gerald Hostetter** has over 700 Silvercraft Pa. views incl. at least 50 of the city of Warren; 9-York (#11000-11008) plus several more; 13-Reading (#12944-12956); 3-Mt. Gretna (#31178- 31180); 28-Gettysburg (#10646-10663) and others; 8-Harrisburg; and 2-Middletown(#8856-8857).

Of the Pa. Turnpike, he has 33 incl. #18828-18842, #19400-19411 and others. Postmarks are in the 1940's. The "Pennsylvania Has Everything" series (#8990-9021) has 1939 and 1942 PMs. Gerald also has 500 beyond Pa., mostly along the east coast from Maine to Florida and a scattering from the mid-west. Cancellations are from the late 1930s to the mid-1950s, but predominately the 1940s.

There's also a Silvercraft series with deckle edges marked "Photo by U.S. Army Signal Corps. GH has #96 to #118(23). Have you any others? Two were mailed in 1944 from Camp Pickett, Va.

All Silvercrafts are b/w, about half with deckle edges, Lanc. City cards are mostly with deckle edges. Most likely all cards are numbered. The handful w/o probably lost the numbers in cropping the photos.

Checklist -

Local SILVERCRAFT PCs by DEXTER PRESS

Number, Town, Description, Postmark dates seen*

- 6291 Ephrata - Saal kitchen and stone sink
 - 6292 Ephrata - Loom in Saron over 175 years old
 - 6293 Ephrata - Water baskets, beehive, dough tray
 - 6294 Ephrata - Part of West Main St., looking east
 - 6295 Ephrata - Front view, Brother and Sister House
 - 6328 Quarryville - St. Paul's Reformed Church
 - 6329 Quarryville - State Street business section
 - 6330 Quarryville - Memorial M.E. Church (vert.) 6/17/53
 - 6333 Quarryville - Middle Octoraro Presbyterian Church
 - 6336 Mount Joy - United Brethren Church 10/10/45
 - 6337 Mount Joy - U.S. Post Office + W. Main St. 7/27/44
 - 6338 Mount Joy - High School 5/23/44
 - 6339 Mount Joy - Joy Theater, business district 12/1/39
 - 10714 Lancaster - Soldier's Monument, Buchanan Park
 - 10715 Lancaster - College Ave., F & M bldgs. 11/28/55
 - 10716 Lancaster - Municipal Airport
 - 10717 Lancaster - Stand Pipe, Buchanan Park
 - 10718 Lancaster** - Entrance East Donegal Springs
 - 10719 Lancaster - Home of President James Buchanan
 - 10720 Lancaster - North Queen St., looking south
 - 10721 Ephrata - Rear view Cloisters
 - 10722 Lancaster** - East Donegal Church
 - 10723 Ephrata - Entrance Ephrata Cloisters
 - 11009 Columbia - Wrightsville Bridge 7/10/36
 - 12178 Lancaster - Soldiers Monument, Penn Square
 - 12179 Lancaster - N. Queen St., looking N. from Penn Sq.
 - 22723 Mount Joy - Business section
 - 22724 Mount Joy - Donegal Presbyterian Church (1740).
 - 25951 New Holland - Shirk's store
 - 25952 New Holland - Kendig Service Station
 - 25953 Leacock - Kensinger's Service Station
 - 26340 Leola - Miller's, Pa. Hiway Route 23
 - 28699 Quarryville - High School
 - 48527 Quarryville - St. Paul's E and R Church
 - 48528 Quarryville - Fire Company
 - 48529 Quarryville - S. Lanc. Co. Joint High Sch. 6/23/58
 - 48530 Quarryville - Aerial photo of Quarryville
 - 77245 Lancaster - Jim's Cafe (vertical)
 - 77943 Kinzers - Aerial photo/Rough & Tumble Engineers
 - 93231 New Holland - "Fish him this way..."
 - 93231 New Holland - "There's something about a farm..."
- *postmarks bear no relation to date of publication
- **ERROR - should read Mount Joy
- 1) 1) Numbers #6336 through 25952 have been seen with and without the deckle edge.
- 2) Many Silvercraft cards come with white borders and without white borders. The latter have NOT been trimmed.
- 3) #93231 and 93232, also include 6-56-1 and 6-56-2. We know the photo for #93231 appeared on the April 1952 cover of an employee magazine for the New Holland Machine Company. (See accompanying story.) A safe assumption would be that these I.D.s stand for June 1956, #1 and #2. These two cards also read "Pub. by Pennsylvania Farm Vacations, Denim Blue, Inc."

Picto-Cards were also made by Dexter and those GH has are published by Kaeser & Blair, Inc. of Cincinnati, O. Only two locals have been sighted - **Community Used Car Lot at 1005 East King St., Lancaster** and **Cemetery Memorials by I. Diller Miller, Quarryville.** Have you seen any others - Picto-Cards or Silvercraft?

BOOK SALES STATIONS

Since direct sales by the club is the manner we've chosen to market our new view book, the following members have volunteered to maintain a small stock of books which can be picked up from them if you have an immediate sale. They are responsible for the total value of the books (\$30 each) so please don't ask them for further consignment.

Make checks to LCPC (eliminate "BOOK FUND")

Phone these members if you have customers:

Walter and Barabra Mowrer (Columbia) 684-5331

Mary Darrenkamp (Lancaster) 397-0556

Ray and Carol Dennis (Lancaster) 290-7948

John Long (Lancaster) 397-1663

Shirley Neidermyer (Lititz) 626-4880

Brian and Ruth Frankhouser (N.Holland) 354-7611

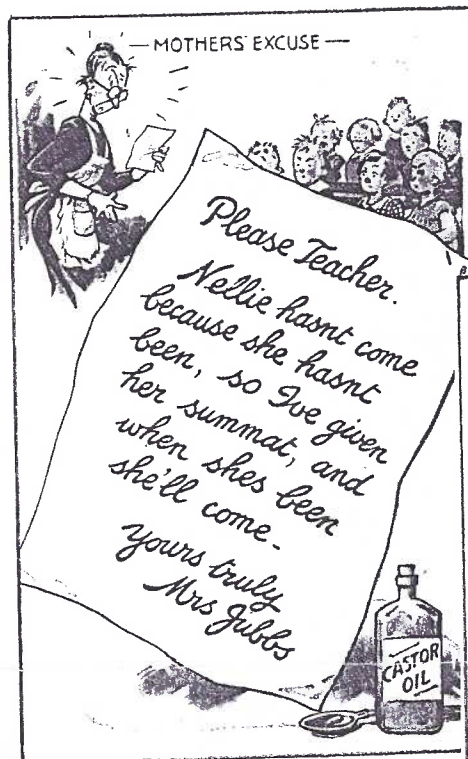
Susan Glass (Millersville) 872-0810

Bernie Heisey (Mount Joy) 653-1756

Jim Ward (Middle Creek) 721-9273

Dorothy Aument (Willow Street) 464-1843

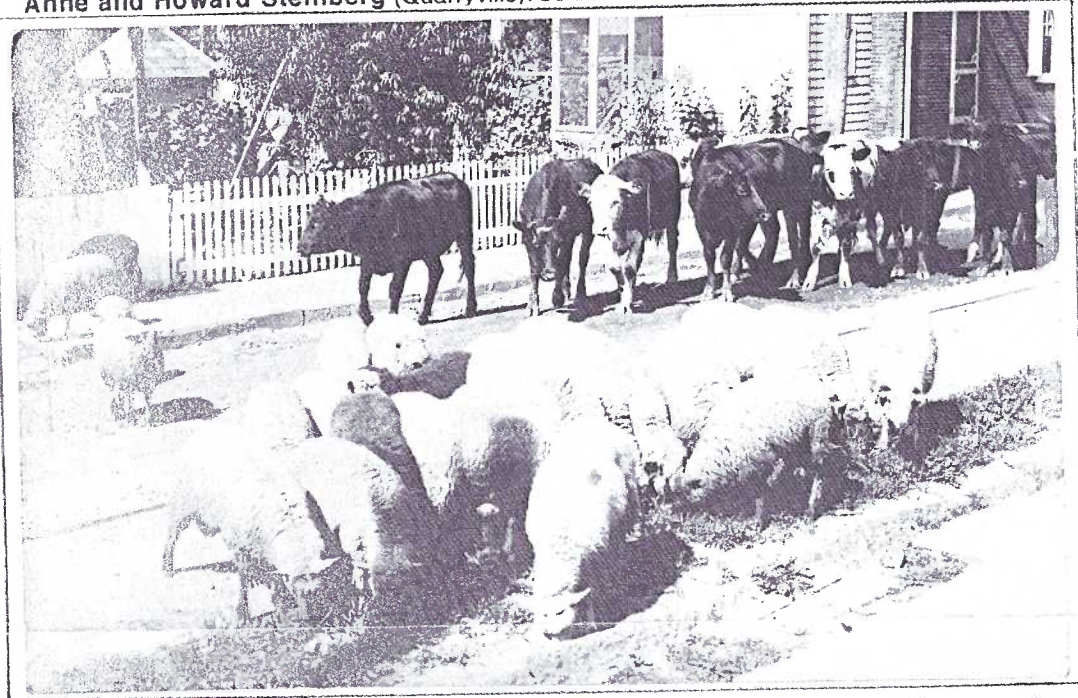
Anne and Howard Steinberg (Quarryville) 786-2362



Comics by Bamforth.

Don't forget your SCHOOL post-card for the September competition.

"Give me a sentence with that word in it."
"The seat of my trousers is worn out but notwithstanding."



Please Bring Him Some Cigars Along

Before the Telephone Age, there was the Golden Age of Postcards. Postcards served for local messages, some arriving only hours after being mailed. The five minute phone call to Florence was still a generation away for many rural families in 1911. This grand real photo shows a typical wild stock drive along a rural town's street. The postmark is Ephrata*. The date is Feb. 2, 1911. With sheep grazing and a green garden behind the picket fence, a safe assumption would be that the photo was made the previous summer. You can also understand why fences were commonplace in rural towns. (No cows in the corn - no beef in the beans.)

Ida Vollertsen's message is to Florence Vollersten (Rothsville): "You can come we are at home. you can come up with Musser to our house. please bring him some cigars along. if you have some Frank. try to come if it is nice. we wish to see you once again." Now, for those of you who don't understand "dutch" (Pennsylvania German) word-order, Musser is staying at Ida's and wants the cigars and Frank is a relative in Rothsville. Rothsville was one of many little cigar-making towns that dotted the Lancaster County countryside, pre-World War I. "Well, so was Ephrata" you say. True, but maybe Musser preferred the cigars from Rothsville (there were hundreds of brands) - and maybe they were cheaper (or free)!

* Which reader will win a prize by identifying the Ephrata location?