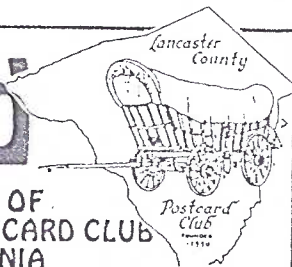


The Card

MONTHLY PUBLICATION OF
THE LANCASTER COUNTY POSTCARD CLUB
LANCASTER, PENNSYLVANIA



Oct. 1998 Vol.9, No.10, #106

NEXT MEETING

October 19, 1998 7:30 pm

Buy, sell, trade from 6 pm

Meets 3rd Monday
Farm & Home Center
Routes 30 and 72
Lancaster, Pa.

Yearly membership is \$8 (\$2 extra for each member at same address). Membership year is April 1 to March 31. Make check payable to: LCPC, c/o Dorothy Fry, 1050 Kleinfeltersville Rd., Stevens, PA., 17578. Advertisements are: \$15 full page, \$8 1/2 pg., \$5 1/4 pg., prepaid with copy. Classified ads are FREE to members, but please submit your ad for each issue. Send all ads, correspondence and change of address to Jim Ward, editor, 1795 Kleinfeltersville Rd., Stevens, PA. 17578-9773, phone 717-721-9273. THE CARD staff includes Dorothy Fry and Carol Dennis, proof readers and Gerald Hostetter. Harold and Ruth Moyer handle the mailings. Recent circulation averaged 229 homes and 14 postcard clubs with whom we exchange.

MONTHLY EXHIBITS and more

Fifty-six members enjoyed SCHOOL HOUSES night and, in fact, were introduced to attending members who are or were teachers: Dorothy Aument, Shirley Bubb, Polly Curtis, Don Davis, Ruth Frankhouser, Dot Fry, John Long, Anne Steinberg and Jim Ward. Some of the pedagogues stayed with it for as few as three years, while others endured for more than 35 years. Of this esteemed group, only Ruth is still actively educating. Does this tell us something about the median age of LCPC members?

Peg reminded us that in one year, nearly all of her pupils' last names were Martin. Those that weren't, had a first name of Martin. Didn't the fact that your school was so close to Martindale give you a clue, Peg?

Now back to business. Exhibitors of single SCHOOLHOUSE postcards -

DON DAVIS FIRST Hatfield High, Pa.'s first consolidated school complete with top-heavy buses

BARB MOWRER SECOND Her father, Isaac Earhart at his school, near Elizabethtown; age about six

SUSAN GLASS THIRD Oxford High with three cards showing progressive growth of the building

HONORABLE MENTIONS

MARY DARRENKAMP Sacred Heart Academy, formerly on East Orange St., Lancaster.

POLLY CURTIS Three Amish school cards

EARL CARVER His Marietta alma mater (complete with musical rendition). Earl - you'd have had a better chance at First Place on your slide trombone.

EMILY KEEBLER Interior of an Amish school with room full of scholars (what they're called by the Amish)

JIM WARD Real photo double-size interior of one-room school complete with 45 children and teacher

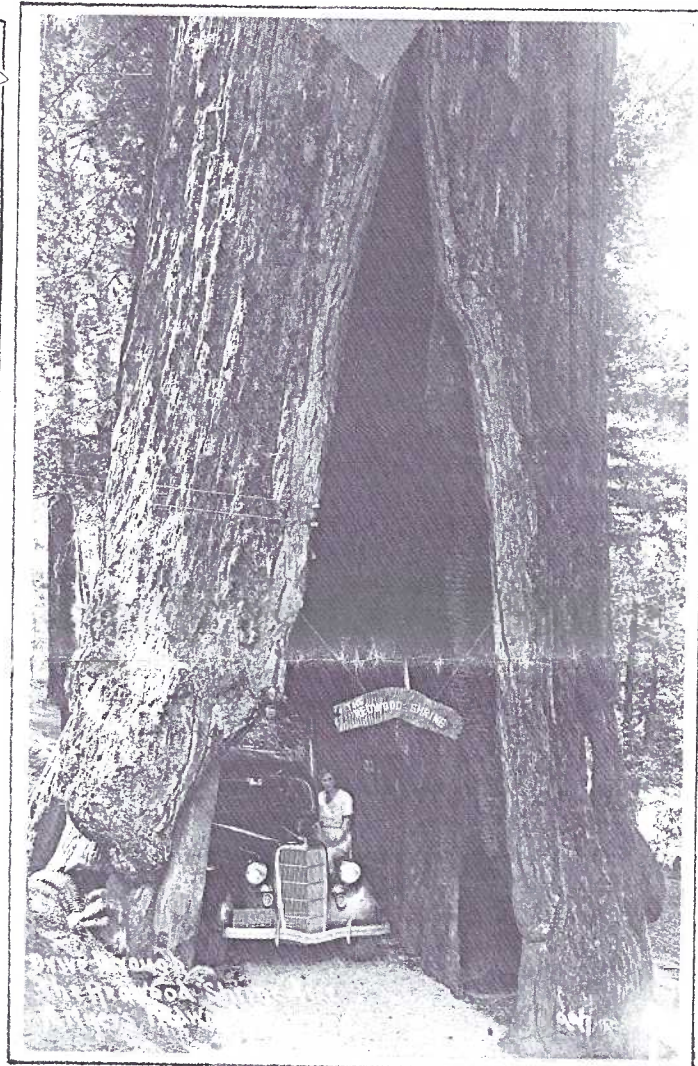
Thanks to all for their participation.

Summarization for future 1998 monthly exhibits:

October: single card of Halloween Transportation.

November: TWO contests = boards on Installment Postcards and boards on Mechanical Postcards. Here's a chance to go home with your pockets loaded! 2 first prizes, 2 second prizes, 2 third prizes! Imagine, you could possibly win \$6 with two first place awards!!

December: a board of Christmas Transportation PCs.



The driver stands beside her 1935 Ford on this real photo card showing the tunnel through the Redwood Shrine Tree. More BIG TREES on the Redwood Highway inside.

NEW MEMBERS

#509 Joseph G. Myers 2536 Miller Rd., East Petersburg, PA., 17520. Ph. 569-1419. Collects Lancaster City and County, Hershey, England, old amusement parks, esp. Rocky Springs and Maple Grove.

#510 Mary E. Forrey 553 Robles Lane, Punta Vedra Beach, FL., 32082. Ph. 904-273-3178. General interest.

#511 Joseph A. Motonis 154 Fry Rd., West Sunbury, Pa., 16061. Ph. 702-637-3186. Collects Pennsylvania.

#512 Jim Weber 3118 Briarwood Blvd., Lancaster, PA., 17601-1202. Ph. 285-5471. Likes trains, exaggerations and Pennsylvania.

Welcome all! When you're in town, treat yourself to the use of our library, our competitive exhibits, our monthly postcard shopping and general fellowship.

BOARD MEETING

Open to Membership

The LCPC Board of Directors and Club Officers will have a brief meeting at 7 PM, Oct. 19 at the Farm & Home Center, 30 minutes before the regular meeting convenes. Topics to be settled: location of Christmas Party-Meeting and possible auction in place of the January 1999 program. Members with ideas and suggestions are encouraged to attend.

The BIG TREES

Editor's Note: Among a dozen subjects on my desk for future articles was this one. As is often the case, these themes are pre-empted in Barr's News or other publications. Barbara Anderson's July 13 story on the redwoods was the most recent. With apologies to THE CARD readers who've seen it, and to Barbara (she's one of my favorite writers) I'll continue with a different slant on the big trees of the Northwest.

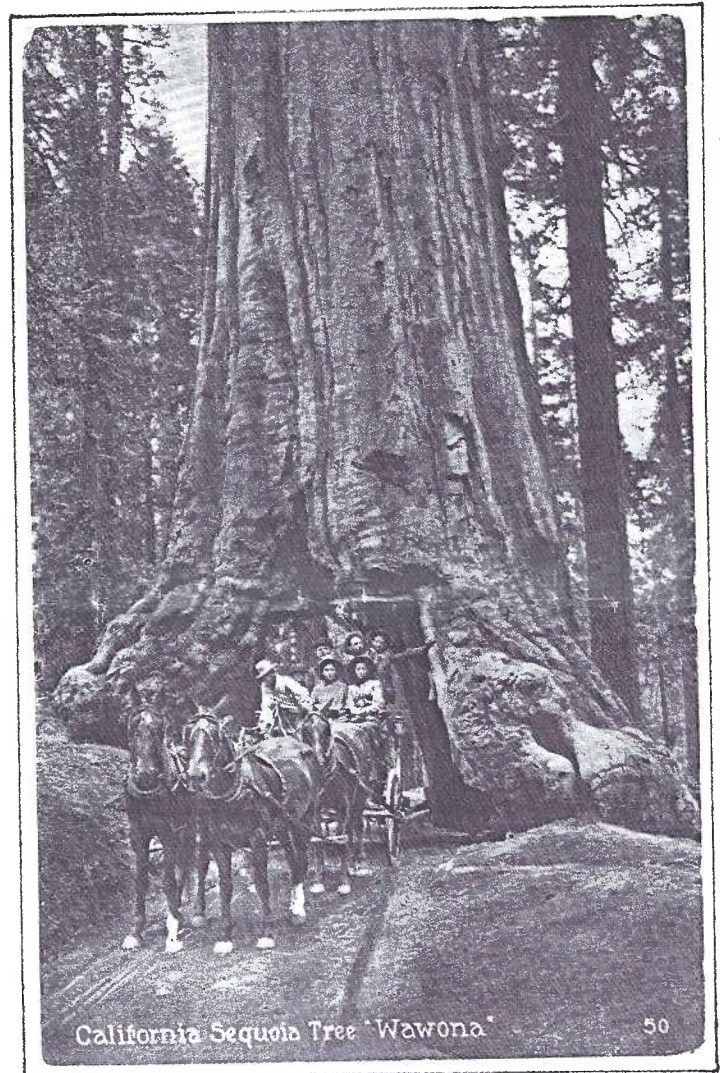
From the Santa Lucia Mts. in California into western Oregon, a 450-mile coastal band of coniferous Goliaths is what remains of 2 million acres of a primeval redwood forest. Since its founding in 1918, the Save-the-Redwoods League, a non-profit conservation organization, has acquired more than \$75,000,000 from contributions. These funds, matched by state and federal funds, have purchased more than 700 groves of big giant trees in 37 public parks encompassing over 260,000 acres.

A popular postcard theme is BIG TREES. You might subdivide them into DRIVE-THRU TREES, CROSS-SECTIONS, TREE HOMES and STORES and LEGENDS. All postcard eras show the BIG TREES.

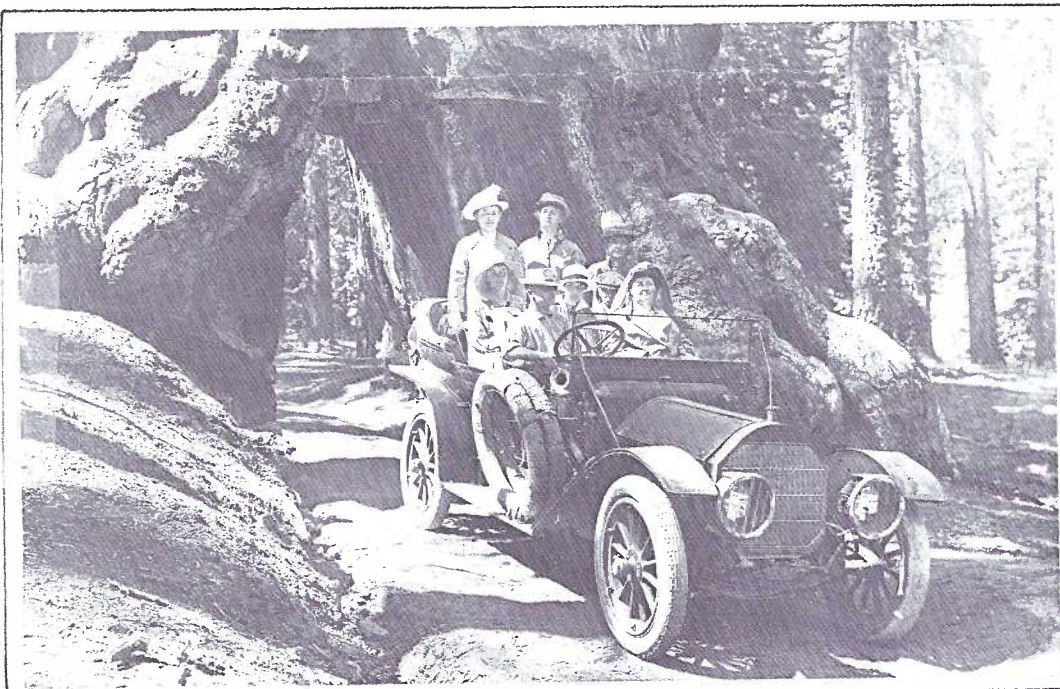
Redwoods are named for the reddish color of their bark and heartwood. Their scientific name is *Sequoia sempervirens*. Their first name honors the legendary Cherokee leader. The second is derived from Latin for evergreen.

The coastal redwoods require a constant supply of water. The fog belt of the Northwest coast cools them in the summer and warms them in winter. Winter rainfall (often 100 inches) and moderate year-round temperatures offer a perfect climate for the monarchs.

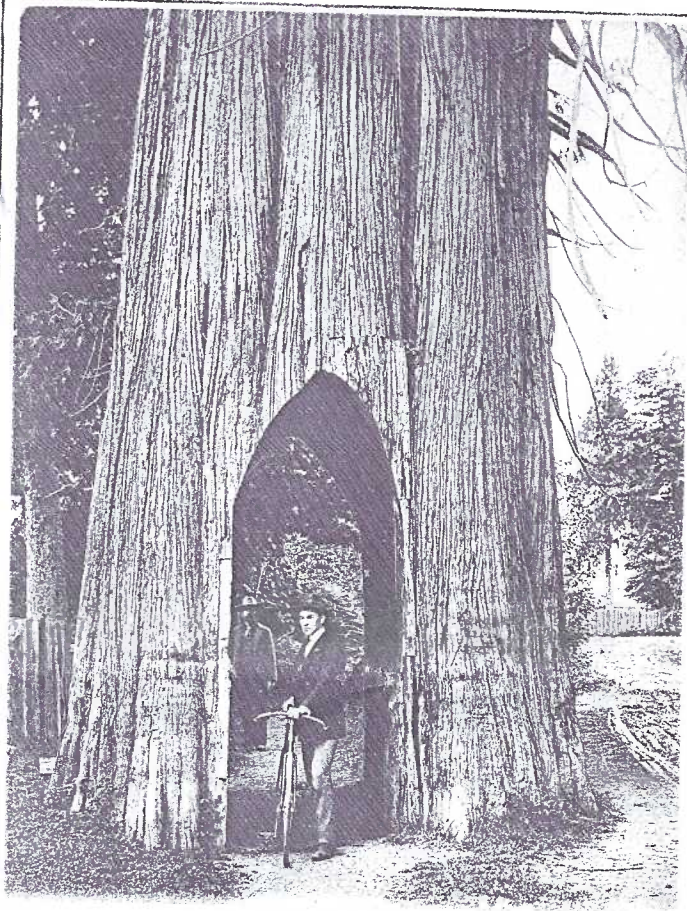
The Redwood National Park was designated as a World Heritage Site in 1980. This distinction is bestowed only upon internationally significant places such as the Great Pyramids, the Palace of Versailles and the Great Barrier Reef.



This is one of several golden age PCs by Edw. Mitchell of the Wawona, a Calif. sequoia in Mariposa Grove. Two different RP's have also been seen sans horses or auto.



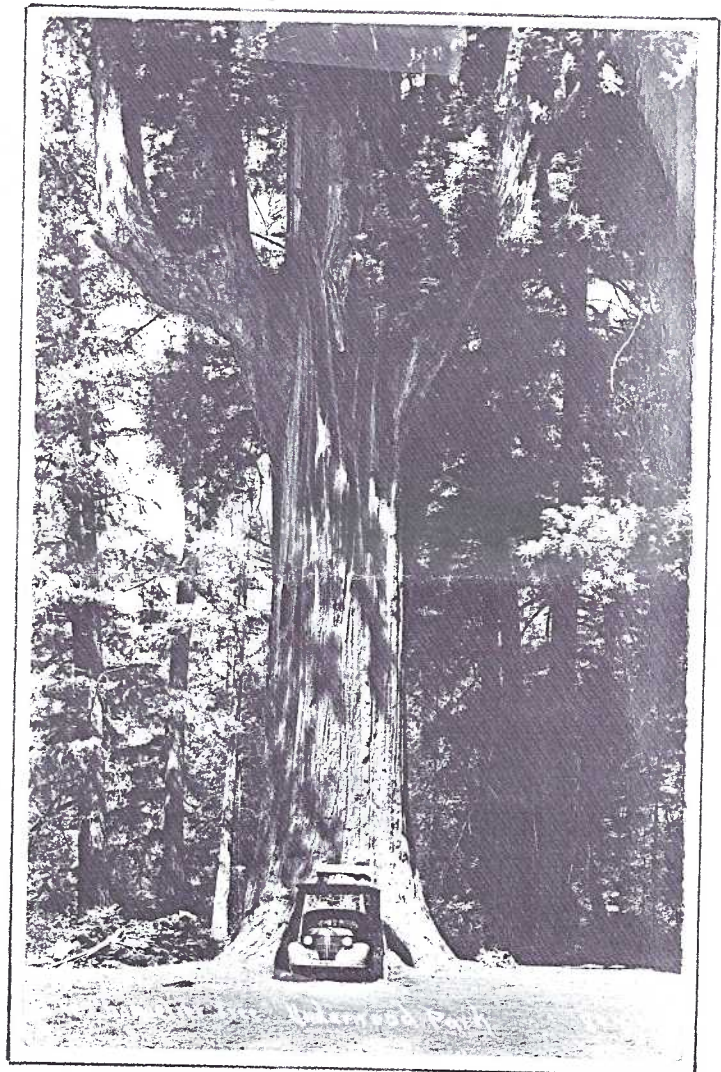
Gerald Hostetter identified for us nearly a dozen different cars pictured on DRIVE-THRU TREES. On this RP however, he can only guess that it might be a 1910 Buick. On other cards of the Wawona tree in Yosemite Valley, he did spot a 1937 Buick, a 1947 Chevrolet, a 1956 Cadillac and a 1957 Chevy. The tree is 227 ft. tall and 90 ft. in circumference at the base.



Cedar Tree "Everett" Wash.

No. 832 Published by The Puget Sound News Company, Seattle, Wash.-Leipzig-Berlin

This certainly qualifies as a DRIVE-THRU TREE, but the unusually "small specimen", the Everett cedar tree, accommodated a mere bicycle. This b/w,u/b PC, published by Puget Sound News as #832, has the same reverse logo as American News cards. Not scarce, it's still harder to find than auto drive-thru cards.



The Chandelier redwood in Underwood Park has a height of 315 ft with a base diameter of 21 ft. Gerald spotted this 1937 Pontiac as well as the following photographed at the same spot: a 1939 Lincoln, a 1946 Pontiac, a 1947 Hudson and a 1962 Ford.



This 1957 Chevy appears on Curt Teich standard and continental chrome cards at the Wawona tree. The well-known "Avenue of the Giants" and Redwood National Park offer a scenic tour on US #101 from the Oregon border south to Leggett, California.

Trees

I think that I shall never see
A poem lovely as a tree.
A tree whose hungry mouth is prest
Against the Earth's sweet flowering
breast.
A tree that looks at God all day
And lifts her leafy arms to pray.
A tree that may in summer wear
A nest of robins in her hair.
Upon whose bosom snow has lain;
Who intimately lives with rain.
Poems are made by fools like me,
But only God can make a tree.

- Joyce Kilmer

PROGRAM

ANNIE and HER BEARS

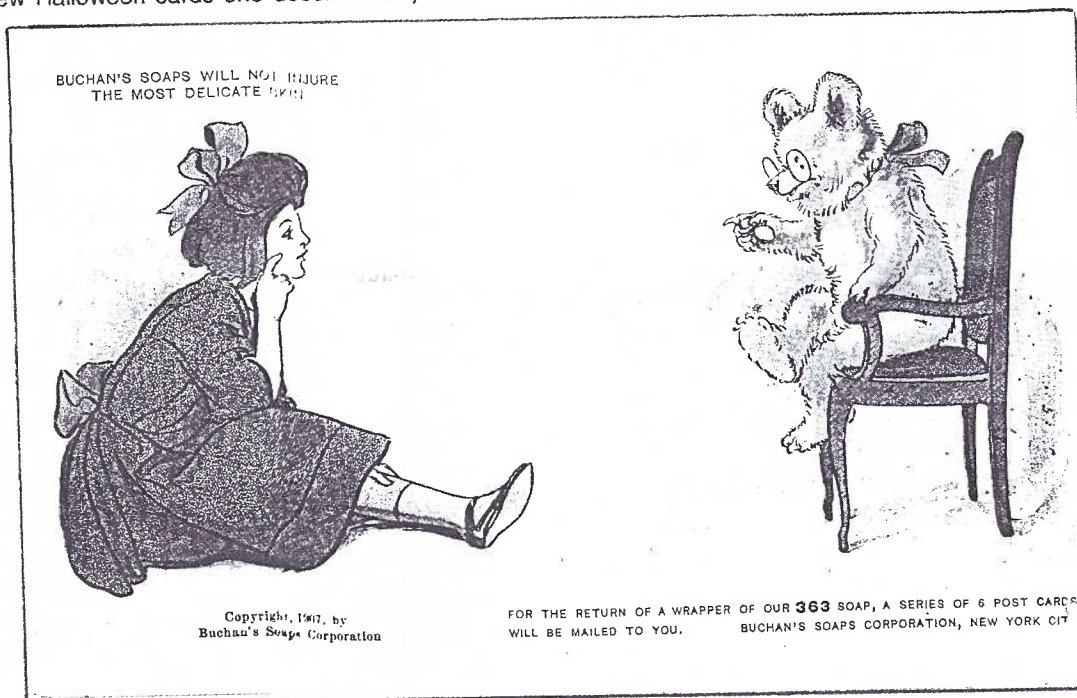
Our speaker (complete with slide presentation) for October will be **Anne Steinberg**, member #13. Husband Howard didn't want #13, so he let Anne join first!

Anne has the distinction of being the second member to present a program to LCPC. It was March, 1990 and her subject was Easter. Although she's known in our neighborhood as the Halloween Queen (there are very, very few Halloween cards she doesn't have) Anne

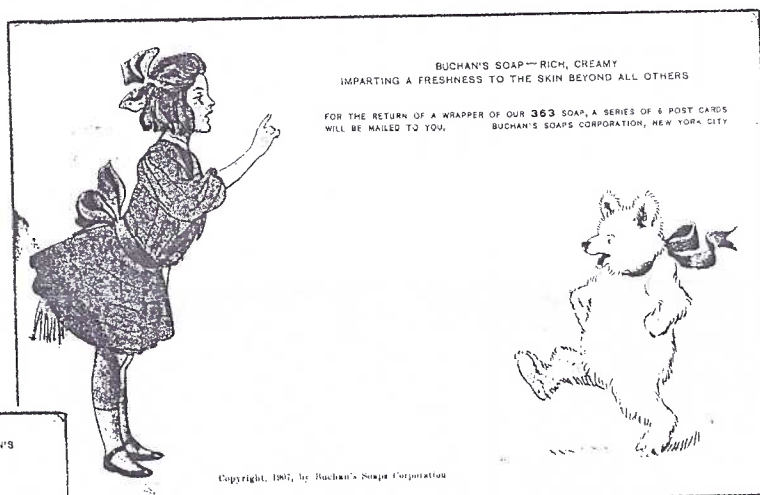
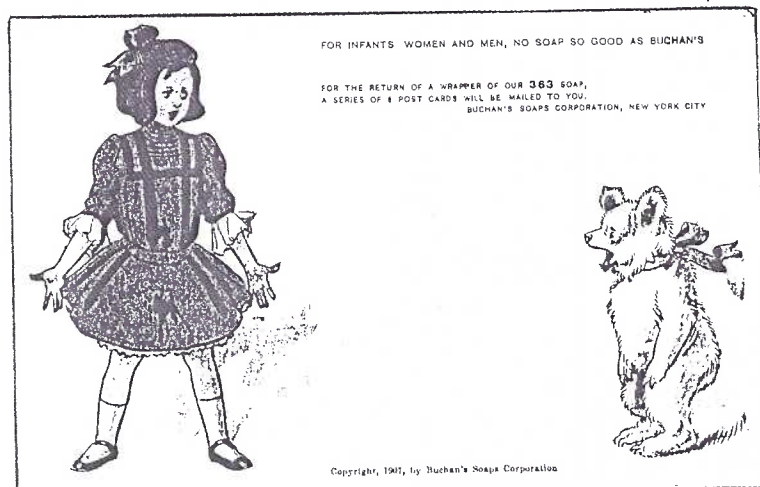
DID offer a Halloween program in later years but a subject also dear to her heart is the Teddy Bear and it will be these cards she shows us in October.

A teacher with a sense of humor (are there any who don't?) we always enjoy seeing Anne's cards; and learning something new plays a major role in her program. Do join us in October for **ANNIE and HER BEARS**. And when you offer her applause, remind her how much we'd like her to be LCPC's president real soon.

For your enjoyment, we here present three cards from the 1907 set by the Buchan's Soaps Corporation.



For infants, women and men
no soap so good as Buchan's.



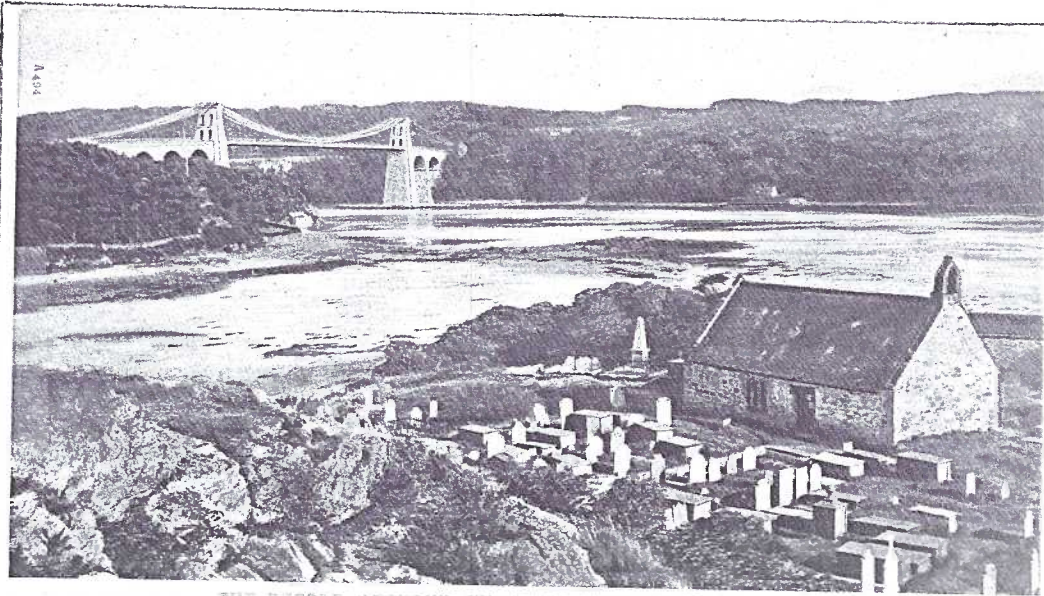
Buchan's Soap - rich, creamy
imparting a freshness to the skin beyond all others.

AS WE GO TO PRESS

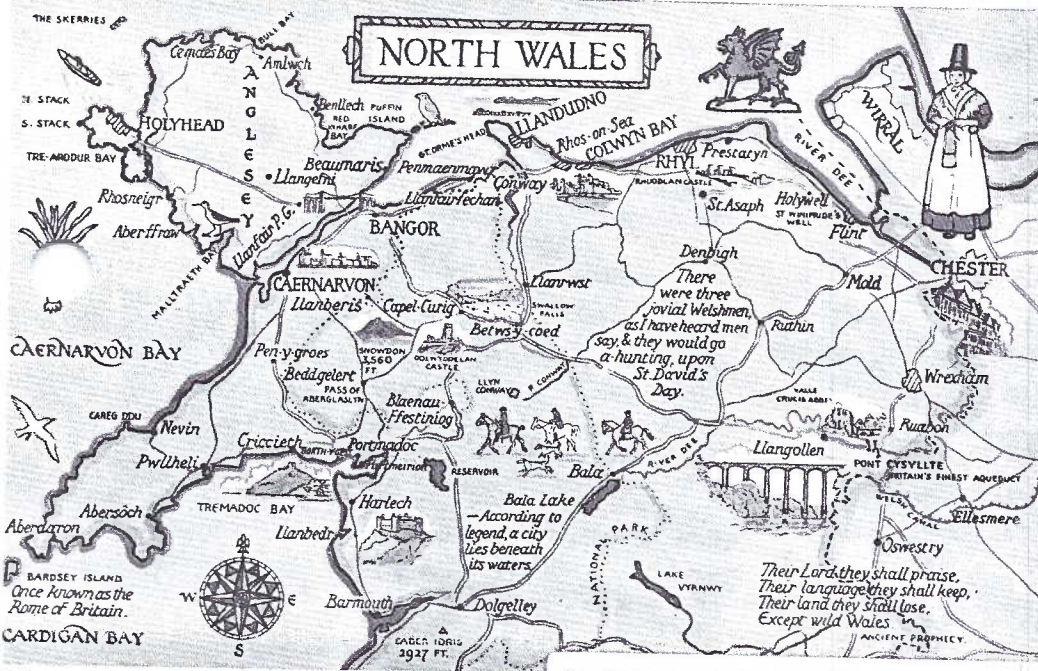
...we've learned that member #38, Roy Cox, passed away within days of selling at the Wind Gap, PA. show sponsored by the Lehigh Valley Postcard Club. He was a pioneer in our hobby, having helped organize several postcard clubs in the mid-Atlantic states.

Dorathy and Harold Fry and I live on Kleinfeltersville Road. Theirs is the southern-most home on the west side while my mine,two miles away,is the northern-most on the east. We're near the upper rim of Lancaster County — and we're not flattered with our 17-letter location. In fact,I find myself making apologies to people who must write it. Though it's no consolation,I remind them that it was Hopeland Road only ten years ago - chalk one up to the Township Fathers.

Near the upper rim of the little country of Wales is a town often found on postcards. It has a long name,too. In fact,I'm thinking of carrying it around to show disgruntled folks that KLEINFELTERS-VILLE isn't too bad when you



THE RECORD "TONGUE TWISTER," WITH TRANSLATION AND VIEW.
Church of St. Mary white hazel hollow near the rapid whirlpool-Tysilio's Church of the red cave.
LLANFAIRPWLLGWYNGYLLGOGERYCHWYRNDROBWL-LLANDYSILIOGOGOGCH



The two bridges spanning the strait dominate most of the Llanfair PCs. The 2-tower Menai Bridge dates from 1825,the Britannia Bridge from 1850, the latter accommodates the Chester and Holyhead Railway trains.

The Pictorial Stationery Co.,Ltd. of London published a card that features the Church of St. Mary. #4587 (the chrome map) is by J. Salmon Ltd. of Sevenoaks, England.

The third card is by an unknown British publisher. It's ID is #6182.

We've also seen Llanfair PG cards by Valentine (a prolific GB publisher) as well as one by E.T.W.Dennis & Sons, Scarborough.

NOTE:Some mail gets through addressed to K-ville Road, but you're taking a chance.

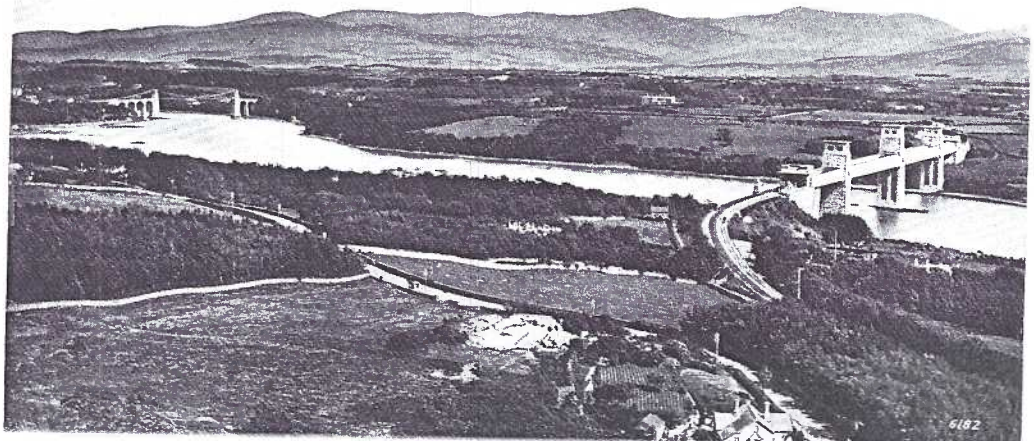
consider LLANFAIRPWLLGWYNGYLLGOGERYCHWYRNDROBWL-LLANDYSILIOGOGOGCH. And this is the last time I intend to use that word in its entirety! The longest location in Great Britain is known as Llanfair PG. Llanfair translates to Church of Mary. (See accompanying cards for translation of the complete name.) As with many foreign names, it describes the area - in this case, a very complete description.

The placid village of Llanfair PG is on the Menai Strait near Anglesey Island which is historically important as an ancient center of Celtic culture as well as the home of the Tudors.

Menai Straits from

Llanfairpwllgwyngyllgogerychwyrndrobwll-llandyslliogogogoch

Church | Mary | a hollow | white | hazel | near to | the | rapid | whirlpool | Church | Saint's name | cave | red



THE OTHER SIDE

THE OLD LEATHER MAN

Peg Hanna recently unearthed a collection that contained the postcard shown below. Fortunately, the written message provided more details than the caption.

"This old man used to pass through B.oston) on his route of 360 miles - 240 in Conn., 120 in N.Y. His clothing was all of leather and he was a French Canadian; rarely ever spoke to anyone; never asked alms of anyone. He had many huts all along his route, one being Hamilton, a few miles N.W. of us."

"My husband is very sick so could not get any better cards. Will send nicer next time.

Lovingly, May Weld"

The writer penciled on the front "Handsome, isn't he?"

ED.NOTE: This interesting tale would not have been revealed had May Weld found a pretty flower postcard!



THE OLD LEATHER MAN.

LUCKY IN SEPTEMBER

10 PC pages were won by Fred Yohe and 100 PC sleeves by Charlie Moore when door prize tickets were drawn. Bernie Heisey was lucky in the 50/50 drawing for \$221

KUDOS FROM FRIENDS

Although the book committee members were bombarded almost at once after "Windows" was printed, with a half dozen errors (factual and typo*) there have been many, many praises of a job well done. Considering the limited amount of time we gave ourselves for assembling and publishing a volume of 501 local postcards, we didn't do a bad job.

Modesty aside, we are pleased to repeat these comments:

"You should feel extremely proud of your newly published book Lancaster County Postcards, Windows to Our Past. It is the best 'local postcard book' we've seen. It's not just a picture book; there is much to learn from the captions by each card. It is also well organized making it easy to use. The map is very helpful and the information on the history of postcards and evaluating the ones shown in the book are an extra bonus. Congratulations on a job well done!" Dolores and Leon Rowe, Kennet Square, PA. (Leon is president of the **Morlatton Postcard Club**.)

..."The book is great! Three pictures per page, 500 postcards in all...and a factual account of the image on each card. The only thing missing is the printer/publisher/postmark date info on each card. This sets an excellent example for every club to copy utilizing their home area." Bette Davis, editor of the **Washington Crossing Card Collectors Club**. Excerpted from the WC4 September 1998 newsletter.

..."At \$30 for a hardback with hundreds of full-size b/w and color reproductions of Lancaster City and County postcards, this book is a superb resource for any postcard collector's library. The cards, the maps, the layout, the price guide - everything about the books shows careful planning and thoughtful writing and editing. This book sets a high water mark for what a club can achieve given a vision of what it wants to accomplish and the support of its members. Congratulations to all involved in the planning and execution of this project." Dee Delcher, editor of the **First Monday Postcard Club of Baltimore**. Excerpted from the club's October 1998 newsletter.

* perhaps when they're all accounted for, we'll print a list of the errors.

IMAGE FILE in LIBRARY

Our club recently joined the Curt Teich Postcard Archives. We received IMAGE FILE, a regular publication of the Archives. This issue contains a story of the Eiffel Tower postcards and Bertha Blodgett's art (she was famous for her children on postcards). There are book reviews, including one on The American Drive-in Movie Theater. IMAGE FILE will be kept in a folder in LCPC's library and available on free 30-day loan basis. All of the club's 80+ books available. Consult your latest Club Roster for a complete listing.

An introductory packet from CTPA also includes offers of postcards and posters which LCPC members may order at member discount prices. This packet is with IMAGE FILES. Note: ordering may be done by individual members but must be through the club's name and address.

LOCAL POSTCARD SUBJECTS IN THE NEWS

Historic White Chimneys

The Slaymaker mansion, White Chimneys, is "among the top five buildings in this county so far as its historical significance" said Randolph Harris of the Historic Preservation Trust of Lancaster County. A recent New Era story announced that Mrs. Samuel R. Slaymaker II and her family will put the family homestead along Lincoln Highway, East on the market.

In an unexpected move which delights local historians, they have donated extensive family records and artifacts (believed to be the most comprehensive ever compiled here) to the Lancaster County Historical Society and the Heritage Center of Lancaster. The Slaymakers have also protected the building and 80 acres of its immediate environs through a series of agreements with area preservation groups.

On the Koppel PC shown, published by Stel-Mar as WC-5, we see Mr. and Mrs. Samuel R. at the table with youngsters, Samuel C. III and Sue. Today, about 30 years after the PC was printed, Sam C. is the father with a boy nearly as old as he himself is on the postcard.

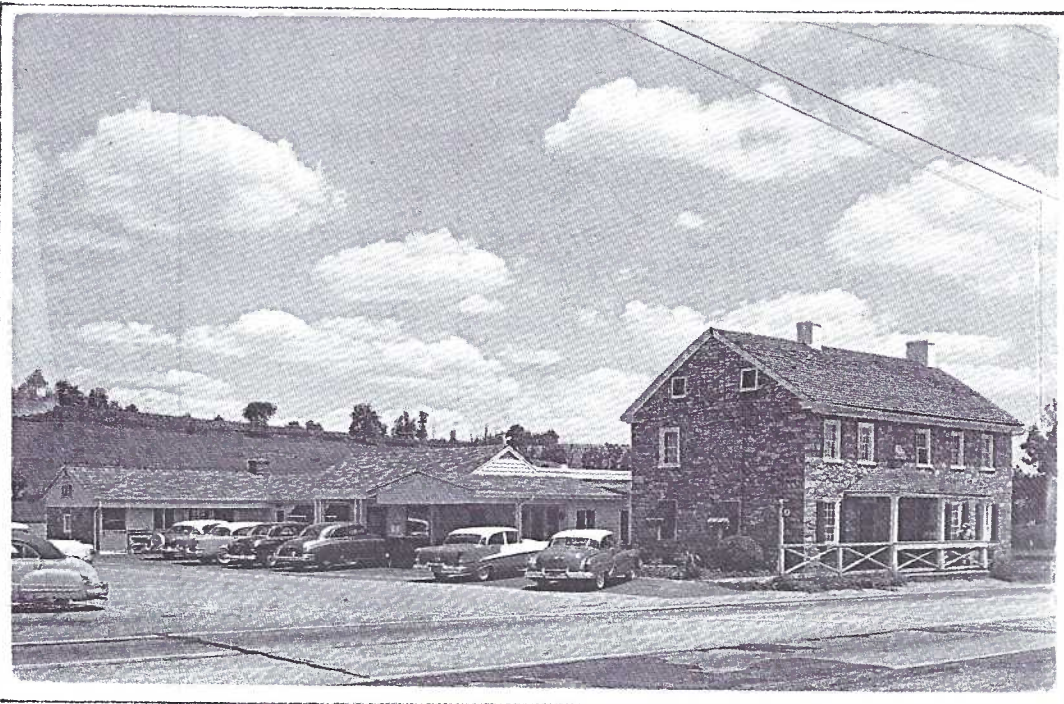
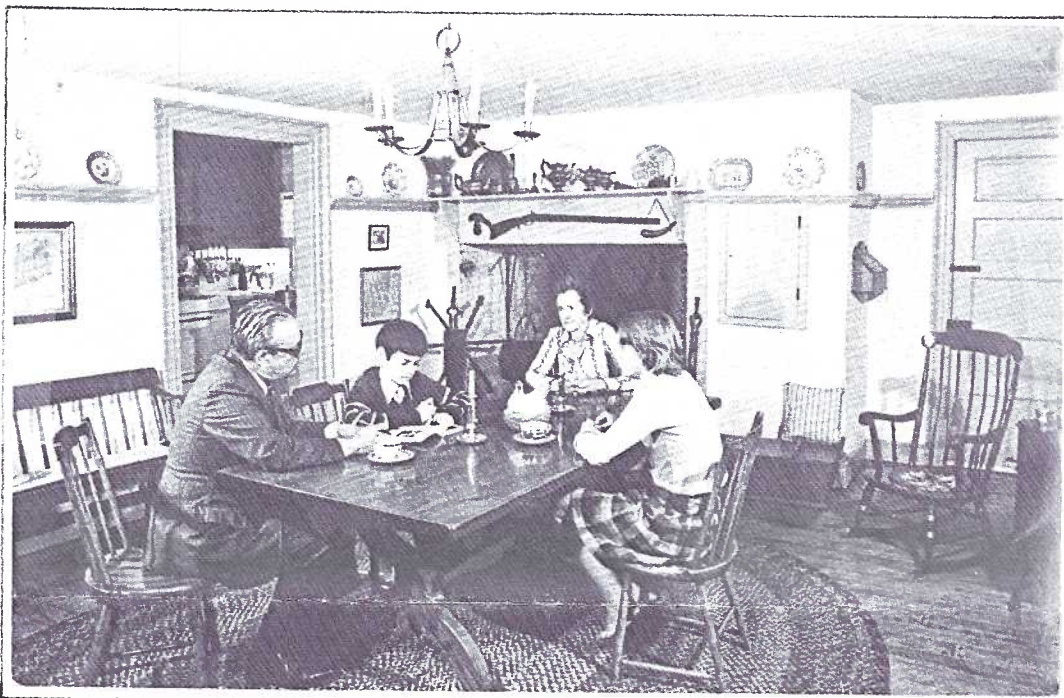
Just another reason we should give more thought to collecting "modern" chrome cards!

National Christmas Center

Long a dream of Jim Morrison, LCPC member #260, his efforts and those of friends will soon come to fruition. Jim is an avid CHRISTMAS scholar. He collects not only postcards and other paper ephemera, but trains, trees, ornaments, - nearly *anything related to Christmas* with special leaning towards items that tell the Christmas Story - in all countries around the world.

The old Dutch Town and Country Inn was on Lincoln Highway, East. Geographically the Inn, soon to be the NATIONAL CHRISTMAS CENTER, is in Vintage (between Paradise and Kinzer). By phone, this Jim Hess card from the 1950's reads Gap; by postal route, it's in Paradise. But by anyway or anyhow you can get there - DO IT! After November 20, the Center will be open the public.

October 1998, pg.7



Those who've heard of the Golden Glow Conventions which convened in Berks County in 1992, 1995 and 1998 know the zeal and to what length (a full week) hundreds of Bel-snickels will go to have fun promoting this joyous of all holidays. The 20,000+ sq. ft. building will become a mecca for Christmas enthusiasts in just two months. It's a trip you must take, after all, it's right in your own backyard!



Conestoga Auction Publishes Postcard

A postcard was brought to the attention of the editor which announces an October 17, 1998 sale of a private collection of glass, china, pottery and stoneware. This is the first PC we've seen in recent years promoting a local auction and we salute Conestoga Auction, 768 Greystone Rd., Manheim, PA. for its vision. The color 4x6" PC was free at the auction house. A minor fault - it lacks both a stamp box and "post card", but the divided back and printed message is in exact postcard format.

October's Exhibit Competition Halloween Transportation

On the spooky night of 10-19
Broomsticks are sure to abound
But All Hallow's Eve transportation
Could easily end up round! →

A Practical Suggestion

With the coming of cold weather, think of indoor activities. Weren't you going to organize your collection this Winter? See me at the Lancaster and York meetings for postcard supplies or phone 717-721-9273.

Ultra Pro archival pages - \$14 per box of 100

Mixed sizes only 15¢ each.

Polypropylene sleeves just \$1.50 per 100

300 for \$4, 1,000 for \$11.

Rigid Plastic Sleeves - 45¢ ea., 5 for \$2, 25 for \$9

White Plastic Dividers - 25¢ ea., 10 for \$2, 100 for \$12
paid ad

Jim Ward

FUTURE SHOWS

OCT. 3-4 ALLENTOWN, PA., Great Eastern Paper Show
9:30-5, Ag Hall, Fairgrounds, adm \$6, \$9 for 2 days.

OCT. 23-24 TIMONIUM, MD., Monumental Postcard
Club. 10-6, 10-4, Day Inn, adm \$1.50.

Rigid Plastic Sleeves	
3-3/4 x 5-7/8	25/\$12.00 PP
	50/\$20.00 PP
	100/\$35.00 PP
	1000/\$275.00 PP
5 x 7	25/\$22.00 PP
	100/\$80.00 PP
8 1/2 x 11	25/\$28.00 PP
	100/\$100.00 PP
Semi Rigid Sleeves 5 Mil Slide Load	
3-7/8 x 5-7/8	100/\$12.00 PP
	500/\$50.00 PP
4 1/2 x 6 1/2	100/\$15.00 PP
	500/\$70.00 PP
Poly Sleeves Postcard Size	
1000 SUPER CLARITY Polypropylene	\$15.00 PP
1000-2 MIL	\$12.00 PP
500-4 MIL	\$10.00 PP
1000 CONTINENTAL-2 MIL	\$15.00 PP
500 FDC-4 MIL	\$12.00 PP
White Plastic Dividers	
100/\$15.00 PP	500/\$65.00 PP
With tabs: 100/\$16.00 PP	500/\$70.00 PP
White Cardboard Boxes	
POSTCARD SIZE - Half top, Full Bottom OR Full Top, Slant Front Bottom	
6-10 boxes \$3.00 each PP	11-24 boxes \$2.75 each PP
STEREO VIEW/FDC BOXES 1/2 TOP (8W x 4-3/4 D x 14" L)	
6-10 Boxes \$3.50 each PP	11-24 Boxes \$3.25 each PP
25 Up \$3.00 each PP	
Vinyl Pages	Archival Pages
4 Pocket (3 1/2 x 5 1/2)	4 pocket
3 Pocket (3 1/2 x 8 1/2) SL	3 pocket
3 Pocket (4 1/2 x 6 1/2) TL	3 pocket
2 Pocket (5 x 7)	2 pocket
1 Pocket (8 1/2 x 11)	1 pocket
9 Pocket (2 1/2 x 3 1/2)	9 pocket
25/\$7.50 PP	25/\$ 6.50 PP
100/\$23.00 PP	100/\$18.00 PP
250/\$50.00 PP	250/\$40.00 PP
MAY BE MIXED	MAY BE MIXED
ALL POSTPAID WITHIN CONTINENTAL U.S.	
POLY SLEEVES 2 MIL Sizes 4 x 7 to 12 x 18	
BACKING BOARD - Solid White 9 x 12 • 11 x 14 • 11 x 15 • 12 x 16	
BLACK CHIPBOARD DISPLAY CASES (mounts)	
BLACK CHIPBOARD TRAYS W/FLOCK INSERTS (Red OR Black)	
COMPLETE SUPPLY LIST AVAILABLE	
HARRIS GRAY	
P.O. BOX 246 • BROOKFIELD, MA 01506-0246 • 508-867-7210	



BOOK SALES STATIONS

Since direct sales by the club is the manner we've chosen to market our new view book, the following members have volunteered to maintain a small stock of books which can be picked up from them if you have an immediate sale. They are responsible for the total value of the books (\$30 each) so please don't ask them for further consignment.

Make checks to LCPC (eliminate "BOOK FUND")

Phone these members if you have a sale:

Dorothy Aument (Willow Street) 464-1843
Ray and Shirley Bubb (Manheim Twp.) 569-7155
Earl Carver (Columbia) 684-3069
Mary Darrenkamp (Lancaster) 397-0556
Ray and Carol Dennis (Lancaster) 290-7948
Brian and Ruth Frankhouser (NewHolland) 354-7611
Harold Galebach (Penryn) 665-3635
Susan Glass (Millersville) 872-0810
Bud and Barbara Heim (Chickies Rock area) 684-6533
Bernie and Betty Heisey (Mount Joy) 653-1756
Gerald Hostetter (Mount Joy) 653-4505
Emily and Jim Keebler (Manheim Twp.) 569-1665
Mary Kirk (Peach Bottom) 548-2255
John Long (Eden-Leola) 397-1663
Mike and Bill Middleton (New Holland) 354-9414
Walter and Barabra Mowrer (Chickies-Marietta) 684-5331
Ruth and Harold Moyer (Denver-Reinholds) 336-6644
Shirley Neidermyer (Lititz) 626-4880
Valeri Refi (Clay-Lincoln) 738-3807
John Rodkey (Columbia) 684-7873
Anne and Howard Steinberg (Quarryville) 786-2362
Jim Ward (Hopeland-Lebanon area) 721-9273

FEWER THAN HALF THE BOOKS REMAIN