

The Card

MONTHLY PUBLICATION OF
THE LANCASTER COUNTY POSTCARD CLUB
LANCASTER, PENNSYLVANIA

November 1998 Vol.9, No.11 #107

Meets 3rd Monday
Farm & Home Center
Routes 30 and 72
Lancaster, Pa.

NEXT MEETING
November 16, 1998 7:30 pm
Buy, sell, trade from 6 pm

Yearly membership is \$8 (\$2 extra for each member at same address). Membership year is April 1 to March 31. Make check payable to: LCPC, c/o Dorothy Fry, 1050 Kleinfeltersville Rd., Stevens, PA, 17578. Advertisements are: \$15 full page, \$8 1/2 pg., \$5 1/4 pg., prepaid with copy. Classified ads are FREE to members, but please submit your ad for each issue. Send all ads, correspondence and change of address to Jim Ward, editor, 1795 Kleinfeltersville Rd., Stevens, PA 17578-9773, phone 717-721-9273. **THE CARD** staff includes Dorothy Fry and Carol Dennis, proof readers and Gerald Hostetter. Harold and Ruth Moyer handle the mailings. Recent circulation averaged 229 homes and 14 postcard clubs with whom we exchange.

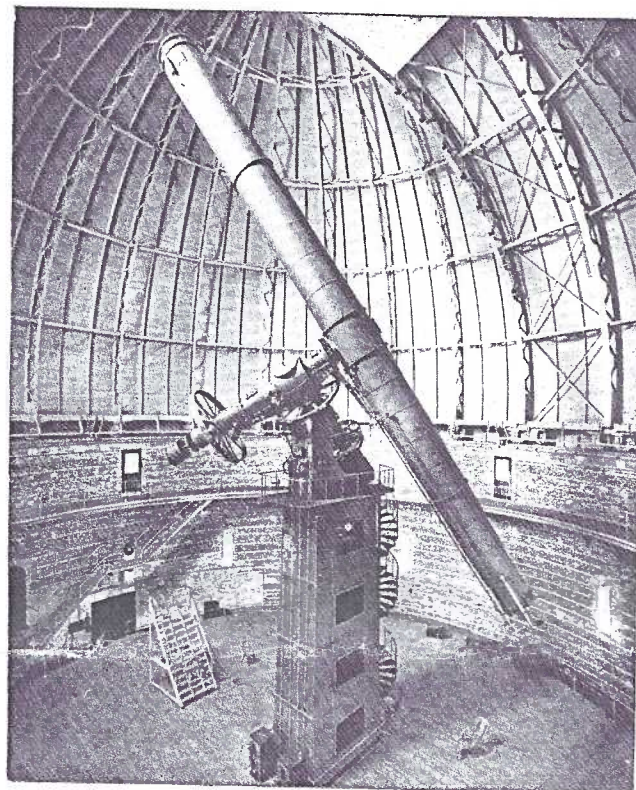
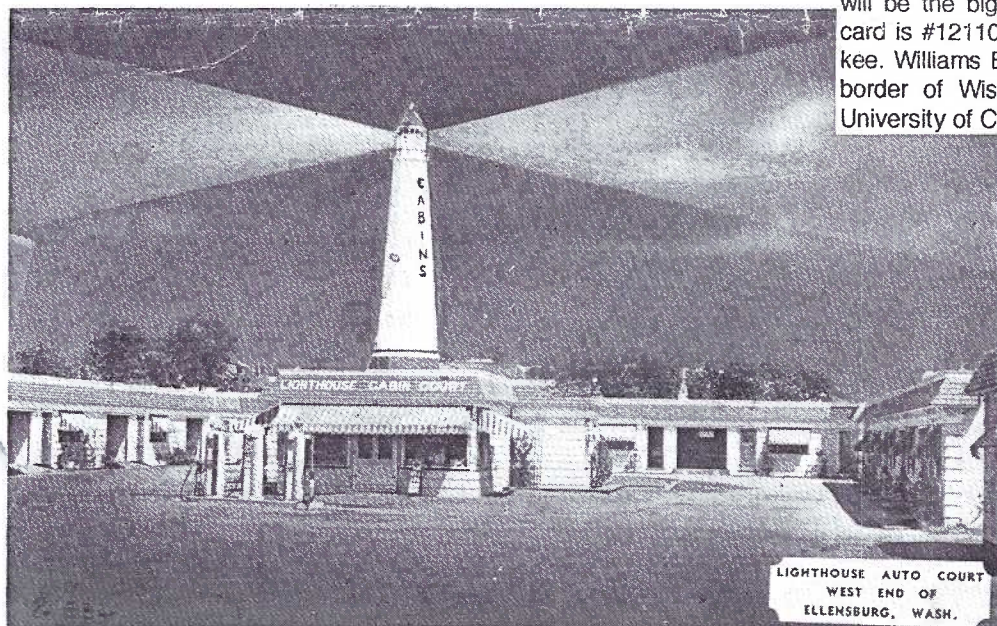
PROGRAM

This month we've invited a friend from the York Post Card Club to present a program. **Dick Julian** has a fondness for far away places. He's been to Antarctica! How much farther can you get, from anywhere, than that?

There are very few postcards of Antarctica, so Dick has chosen as his subject for our November program, another interest of his - **WORLD WIDE LIGHT-HOUSES**. Several of our members collect lighthouses. Some visit them, collecting a card from each. In lieu of postcards, it's often necessary to bring home photos. At least two members of LCPC made visiting every light-house in Maine (over 65 of them) a project...and they have accomplished the task and have the photos to prove it.

We invite and encourage you to attend November's meeting and enjoy Dick's lighthouses - and why not bring along your own? as well as questions and comments you might wish to share about *lighthouses*.

The Phototone card below, though it isn't a genuine lighthouse, would certainly be found in some lighthouse collections - and definitely with Roadside America. Ellensburg is near the Yakima River about 100 miles inland from Seattle. Maybe our friends in the Pacific Northwest Post Card Club can offer us an explanation.



THE 40-INCH TELESCOPE OF THE UNIVERSITY OF CHICAGO,
YERKES OBSERVATORY, WILLIAMS BAY, WISCONSIN.

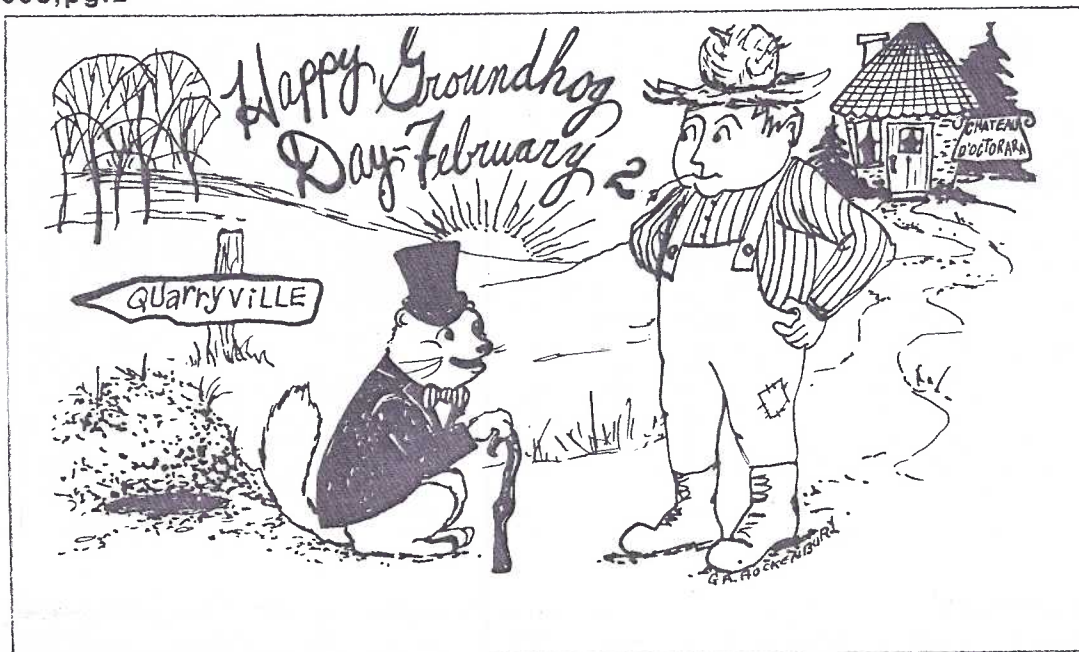
THE OBJECT-GLASS HAS A DIAMETER OF 40 INCHES. THE TUBE IS
63 FEET LONG, AND WEIGHS SIX TONS. THE REVOLVING DOME IS
90 FEET IN DIAMETER. THE FLOOR MAY BE ELEVATED
THROUGH 23 FEET UP TO THE BALCONY.

NOVEMBER 17 -18, 1998

This b/w view of the telescope in the Yerkes Observatory is a reminder that in the *early morning hours* of November 17 and 18 you're apt to see the biggest display of meteors passing overhead for the next 33 years! They are known as the Leonid Shower, named for the constellation Leo from which they've been emanating for centuries. Thirty to forty meteors a minute are not unheard of and, should it prove to be a very clear night, it will be the biggest heavenly display in a lifetime. The card is #12110 from a series by C.Kropp Co. of Milwaukee. Williams Bay is on Lake Geneva near the southern border of Wisconsin and just a short drive from the University of Chicago in Illinois.

CHRISTMAS PARTY

Our December Meeting/Party will be at the National Christmas Center on Dec. 21. More details will appear in the Dec. CARD. At this point we know it will be a cold platter finger-food menu provided by LCPC. We will convene at 6:30 PM. Car pools will be offered from Lancaster to Vintage (just east of Paradise on the Lincoln Hwy.). Dinner, an abbreviated business meeting and exhibit boards will be followed by a grand tour of Jim Morrison's new facility. Families, including children, are definitely encouraged to attend.



CLYDE GROFF DIES #282 Was Noted Genealogist

LCPC missed the boat by not asking Clyde Groff to participate more actively in our club. The noted genealogist died on Monday, Oct. 19. He was a step ahead of us when he organized and became the first chairman of the Historic Preservation Trust of Lancaster County. A mover and a shaker, Clyde was a member of dozens of local organizations; an officer in many. He attended our meetings on occasion, but more often than not, meeting schedules conflicted and he spread himself as thin as he could.

The ninth grade drop-out went on, in later years, to earn his GED as well as college course credits and ranked among the best of the County's genealogists - a hobby he pursued from age 13 to his death at 78.

The Ground Hog Day postcard shown, Clyde mailed to me in February 1994. It reads: "Dear Jim, Missed you at RRCC* Will look for you on Ground Hog Day at lodge**. Come in and ask for Clyde."

* Red Rose Coin Club - he was secretary for many years. I'm a life member, but WOCOC (without coins or currency = gave them up years ago).

**The Slumbering Groundhog Lodge near Quarryville, Pa.

The card art is by G.A. Rockenbury; publisher unknown.

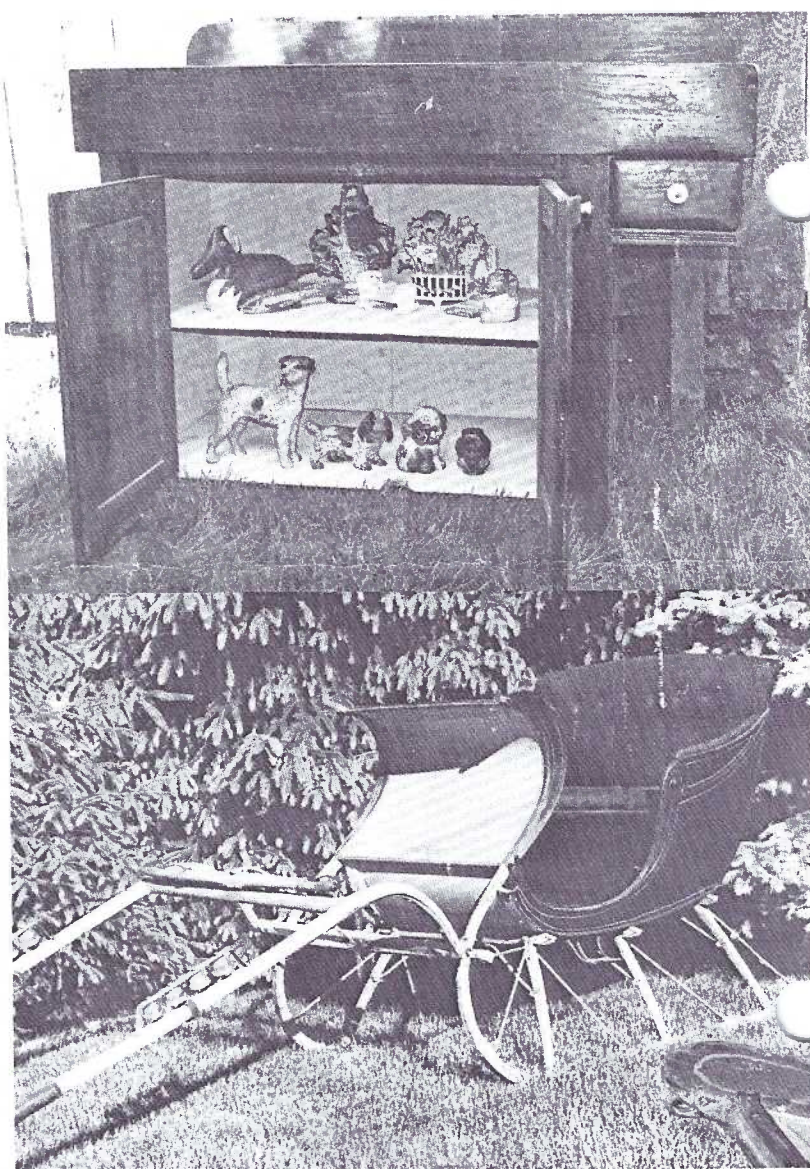
LUCKY IN OCTOBER

Betty Gregg went home the happy recipient of \$23 - half of the night's 50/50 drawing. Leona Rineer and Newlin Groff won door prizes of 10 PC pages and 100 PC sleeves.

Another Local Auction Postcard

Newt Groff, member #225, when he read that Conestoga Auction Company had used a PC for a sale, reminded us that our own Jessica Ann Shaub, member #302, herself an auctioneer, published this one. The sale was June 20, 1998 at the Lampeter Community Bldg. It featured furniture, Hubley items including old iron banks, Heisey glassware, a goat cart and the sleigh and dry sink shown on the card.

Have you any PCs left for sale or trade, Jessica?



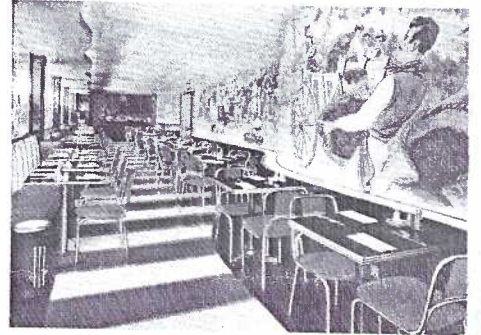
331-37 N. Queen St.

A recent news article concerned the closing of the Italian-American Citizens Club in Lancaster. The association had originated in 1933 for the purpose of supporting immigrants by aiding them in naturalization and offering English language classes. The I-A citizens of the '90s no longer have these problems and the more recent use as a social hall has even fallen onto disuse.

What sparked your editor's interest was the addresses in this block of North Queen St.

November 1998,pg.3

ROSE BOWL CAFE 337 - 339 N. Queen St., Lancaster, Pa.



Several "happenings" on that and neighboring properties found their way onto postcards. First, the Chas. O. Lynch card of Engine Company No.4, issued about 1917-18 is part of a set of six fire house cards (see story in THE CARD issues of May, June and July 1991). There had been a fire company on the site, at #331-333 since 1858 when the Washington Steam Fire Engine and Hose Company No.4 found its permanent home. (It was organized in 1820.)

Close examination of the b/w card shows Henry Noltz, Jr.'s Carriage Shop to the north at #335 and a tobacco warehouse on the south.

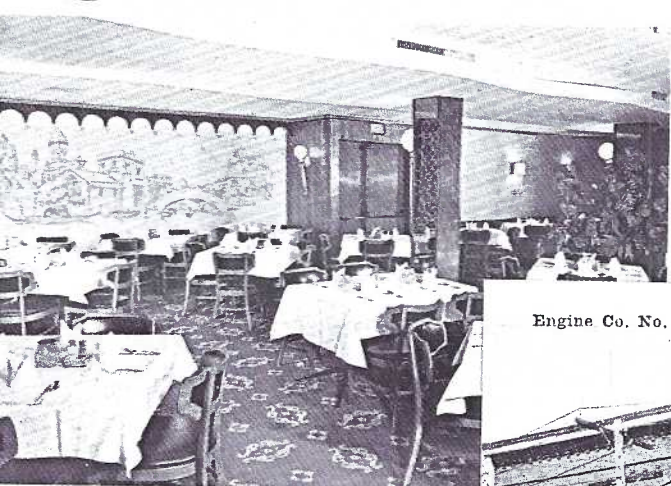
The carriage works became an auto body shop by the 1920's.

By 1941 the Italian-Americans bought the fire company property. Engines were faster and a fire house had been built farther north in the city.

At the same time, the city directory lists the Rose Bowl Cafe on the premises of #337-339. The multi-view linen of the cafe is by MWM (mid Western Map) Co. It's identified as #11785F. Jim Hess published the Dexter chrome #84283-B in the 1950's when the cafe changed its image with large dining areas.

The old tobacco warehouse was demolished to provide parking area for the club.

The Rose Bowl



Engine Co. No. 4, Lancaster, Pa.



"WINDOWS TO OUR PAST"

An updated report of LCPC's book.

LCPC'S "Windows" is not Bill Gates' "Windows" and we're talking 2,000 copies not 2,000,000.

The Book Sales Stations - namely the 22 members who've offered to promote our view book with small consignment stock - have proved a good idea. Sales are coming in at a steady pace.

Mary Darrenkamp and **Elizabeth Graver** sold 8 copies at a craft fair in just a five hour period. **Brian Frankhouser** promotes our hobby by displaying a different postcard on his desk every week where he works. The "water cooler crowd" regularly meets there each week to see a new PC and Brian has sold his fellow employees more than 30 books!

Harold Galebach found his barber and fellow customers liked the book and bought it. **Jim Morrison** has provided space in an antique glass case to promote the book while **Bernie Heisey** makes a thumb-thru copy" available at his stand at Roots (Area 1 near the office). He's there every Tuesday from 8 AM to 9 PM with Pa.Dutch food stuffs and collectibles, as well as post-card magnets and enlarged, matted postcard images.

Dorothy Aument and **Anne Steinberg** are covering southern Lancaster County with brisk sales through the SOLANCO Historical Society members.

At the YWCA 2 and 3-hour shifts were manned at a table for two days. Net results = 111 books sold! We have these members to thank for their time: **Betty Beck, Dick Bishop, Susan Glass, Mary Ann and Bill Guntow, Valerie Refi, Mary Ann Sherer and Jim Ward**. One buyer decided the book would be appreciated by a hospitalized friend "so much more than flowers every few days". A 4th grade substitute teacher said Windows would be a perfect way to teach local history. Several customers intended to mail them to Lancastrians who've moved away from home but will be "so happy to have reminders of the good old days". A fellow genealogist bought a copy for the Lancaster Free Public Library as a memorial gift in **Clyde Groff's** name. (see pg. 2). Special "thanks" to **Dede Schaeffer** for suggesting selling at the YWCA Town Fair site.

Do your share - promote our club project. Talking about it over the phone won't sell it. **SHOW IT**. A five minute scan and the book sells itself! We've reprinted a list of members who have books in stock along with their phone numbers. If you have potential sales and need copies, contact Ray Dennis or Jim Ward.

"Windows" sells for \$30 incl. PA. sales tax. There were 2,000 deluxe hardcover copies printed. There will be *no reprints or further editions* of "Windows".



AN EASEL POSTCARD

This is a Whitney postcard. Whitney entered the postcard publishing field quite late. In fact, they were contemporaries of Gibson. Both shared a large portion of the growing greeting card market.

In innovative feature adopted by Whitney was the easel-type postcard an example of which you see here. Where the card has been folded back, we've used a dotted line to show you it's full size. Can you imagine the delight in a child's eyes when Aunt Peg not only gave her a Thanksgiving card, but it was one that would stand up on the dining room buffet!

Easel-type cards can be found of most of the popular holidays.

BOOK SALES STATIONS

Phone these members if you have a sale:

Dorothy Aument (Willow Street) 464-1843
Ray and Shirley Bubb (Manheim Twp.) 569-7155
Earl Carver (Columbia) 684-3069
Mary Darrenkamp (Lancaster) 397-0556
Ray and Carol Dennis (Lancaster) 290-7948
Brian and Ruth Frankhouser (NewHolland) 354-7611
Harold Galebach (Penryn) 665-3635
Susan Glass (Millersville) 872-0810
Bud and Barbara Heim (Chickies Rock area) 684-6533
Bernie and Betty Heisey (Mount Joy) 653-1756
Gerald Hostetter (Mount Joy) 653-4505

Emily and Jim Keebler (Manheim Twp.) 569-1665
Mary Kirk (Peach Bottom) 548-2255
John Long (Eden-Leola) 397-1663
Mike and Bill Middleton (New Holland) 354-9414
Walter and Barabra Mowrer (Chickies-Marietta) 684-5331
Ruth and Harold Moyer (Denver-Reinholds) 336-6644
Shirley Neidermyer (Lititz) 626-4880
Valeri Refi (Clay-Lincoln) 738-3807
John Rodkey (Columbia) 684-7873
Anne and Howard Steinberg (Quarryville) 786-2362
Jim Ward (Hopeland-Lebanon area) 721-9273

Lake Chaubunagungamaug formerly known as Lake Chargoggagogg Manchoggagogg Chaubunagun Gamaugg

but often appearing on Webster,Massachusetts PCs as
Chargoggagoggmanchoggagoggchaunbunagungamaugg

South central Massachusetts has been best known by many generations of tourists for Old Sturbridge Village. In recent years nearby Brimfield has become a Mecca for antique (and postcard) collectors. During the golden age of postcards,a lake on the border of south central Massachusetts and northern Connecticut,laid claim to having the longest name (44 letters) on domestic views. Perhaps it was a response to the 58-word champion location published on cards of Wales (last month's CARD).

On the six cards* we've seen of Lake C.,only one breaks the lake's moniker into four words as shown in our subtitle. The lake is closest to the hamlet of Webster (named on half of the PCs) and most of the activity centered around the water front at Beacon Park. The 1997 AAA Tour Book doesn't list Beacon Park. Is it a well kept secret or has BP been swallowed up by urban sprawl?

Today's atlas uses the shortened form of the name as shown in our headline = only 17 letters plus "Lake", quite reasonable (?) like Kleinfeltersville Road!

***views we've seen of L."Chugg" -**

Illustrated Postcard Co.,b/w,undivided back

Blanchard, Young & Co.,blue,undivided back #12-2B

(H.C.Branch,known as "The Post Card Store",Webster

American News for Rhode Island News Co.,color,d/b

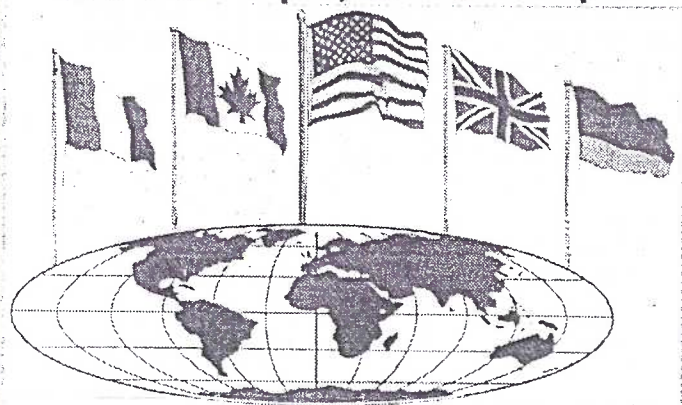
Curt Teich,color,d/b "North Pond from Sandy Shore"

Tichnor,color linen,d/b

Unknown publisher,color d/b (card shown)

DEDE SCHAEFFER

will now be at this York Show
Fri. 9 am-7 pm, Sat. 9 am-5pm



York International Postcard Fair

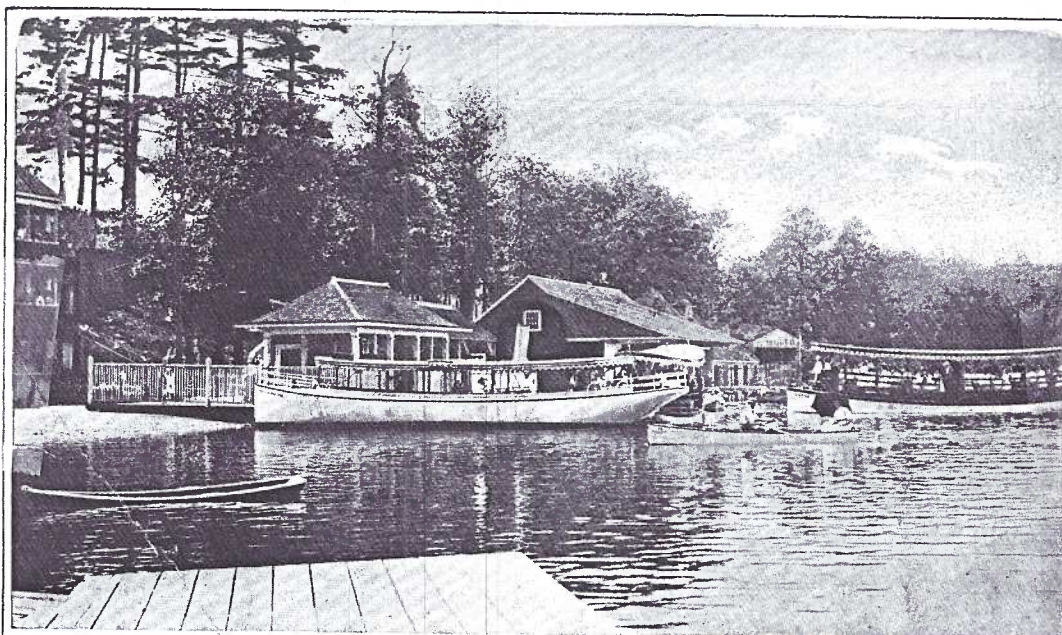
November 20 & 21, 1998

York Fairgrounds, York, PA

The show of shows - over 70 quality dealers. Don't miss this pre-Thanksgiving feast of postcards!

Hotel info: Holiday Inn 1-717-845-5671

Mention Postcard Show for special rate of \$40.00



Water Front, Beacon Park, Lake Chargoggagogg Manchoggagogg Chaubunagun Gamaugg

MONTHLY EXHIBITS

Seventy-three members enjoyed the subject of **HALLOWEEN TRANSPORTATION**, a subject which proved to be not only enjoyable but not as difficult to find as you might expect. We've including a brief description of the single cards.

HAROLD MOYER FIRST Family in watermelon auto
EARL CARVER SECOND Mr. Pumpkin in his auto
CAROL DENNIS THIRD Witches and devils
 emerging from the dinner table pumpkin

HONORABLE MENTIONS

LEWIS BECHTOLD Vegetable people in their auto
DON DAVIS Girls riding on flying bats
RAY DENNIS Boys toting a pumpkin litter
MARY KIRK Witch on a pumpkin-headed broom
VALERIE REFI Pumpkin-headed balloon
SANDRA SHAUB Witch astride an owl
JIM WARD Witches flying on Wright Bros. airplane

Thanks to the ten members for their efforts. November's boards will be two categories. You may enter in each if you have the PCs - **MECHANICAL POSTCARDS** and **INSTALLMENT POSTCARDS**. There will be 1st, 2nd and 3rd place awards for each category. Remember, these are boards. December will be **TRANSPORTATION** but in the Christmas spirit, also a full board.



A MATTER OF TASTE.

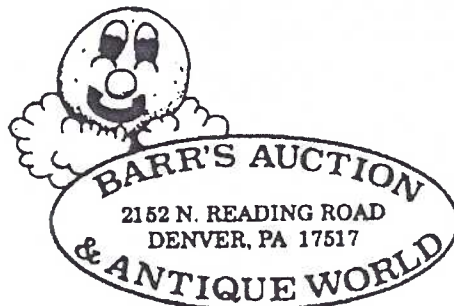
Mr. Worm: "My goodness! That young lady just said my house was rotten. Why, it's the best furnished cottage under the apple tree." Judge.

From "Snap-Shots" Copyright

Grin of the Month

The Gus Dirks "Snap-Shot" PC from Gt. Britain reads **A Matter of Taste**: Mr. Worm - "My goodness! That young lady just said my house was rotten. Why, it's the best furnished cottage under the apple tree."

John Klein Postcards



Exit 21
Pa. Turnpike

Saturday 10-5
Sunday 8-5

Rigid Plastic Sleeves			
3-3/4 x 5-7/8	25/\$12.00 PP	5 x 7	25/\$22.00 PP
	50/\$20.00 PP		100/\$80.00 PP
	100/\$35.00 PP	8 1/2 x 11	25/\$28.00 PP
	1000/\$275.00 PP		100/\$100.00 PP
Semi Rigid Sleeves 5 Mil Slide Load			
3-7/8 x 5-7/8	100/\$12.00 PP	4 1/2 x 6 1/2	100/\$15.00 PP
	500/\$50.00 PP		500/\$70.00 PP
Poly Sleeves Postcard Size			
	1000 SUPER CLARITY Polypropylene		\$15.00 PP
	1000-2 MIL		\$12.00 PP
	500-4 MIL		\$10.00 PP
	1000 CONTINENTAL-2 MIL		\$15.00 PP
	500 FDC-4 MIL		\$12.00 PP
White Plastic Dividers			
	100/\$15.00 PP		500/\$65.00 PP
	With tabs: 100/\$16.00 PP		500/\$70.00 PP
White Cardboard Boxes			
POSTCARD SIZE - Half top, Full Bottom OR Full Top, Slant Front Bottom			
	6-10 boxes \$3.00 each PP		11-24 boxes \$2.75 each PP
STEREO VIEW/FDC BOXES 1/2 TOP (8W x 4-3/4 D x 14" L)			
	6-10 Boxes \$3.50 each PP		11-24 Boxes \$3.25 each PP
			25 Up \$3.00 each PP
Vinyl Pages		Archival Pages	
4 Pocket (3 1/2 x 5 1/2)	SL 25/\$7.50 PP TL 100/\$23.00 PP 250/\$50.00 PP MAY BE MIXED	4 pocket	25/\$ 6.50 PP
3 Pocket (3 1/2 x 8 1/2)		3 pocket	100/\$18.00 PP
3 Pocket (4 1/4 x 6 1/4)		2 pocket	250/\$40.00 PP
2 Pocket (5 x 7)		1 pocket	MAY BE MIXED
1 Pocket (8 1/2 x 11)		9 pocket	
9 Pocket (2 1/4 x 3 1/4)			

ALL POSTPAID WITHIN CONTINENTAL U.S.

POLY SLEEVES 2 MIL Sizes 4 x 7 to 12 x 18

BACKING BOARD - Solid White 9 x 12 • 11 x 14 • 11 x 15 • 12 x 18

BLACK CHIPBOARD DISPLAY CASES (mounts)

BLACK CHIPBOARD TRAYS W/FLOCK INSERTS (Red OR Black)

COMPLETE SUPPLY LIST AVAILABLE

HARRIS GRAY

P.O. BOX 246 • BROOKFIELD, MA 01506-0246 • 508-867-7210

Larger Than Life - The American Tall-Tale Postcard is a great book on the subject. It's in our library.



Good corn makes good Hogs.
Copyright 1909 by Martin Post Card Co.

Good Corn - Good Times

It's always a pleasure to see a story by **Lorraine Singer**, LCPC member #99, in the Lancaster Sunday News. Lorraine is a frequent contributor to the column "I Know A Story". Her October 4 story was titled "Road to family reunion is paved with roasted corn". As you might suspect, there was fun and frustration at every turn.

Our *thank you* to Lorraine is in the form of this real photo collage captioned **GOOD CORN MAKES GOOD HOGS** (no implication is intended towards Lorraine's family). It's just a reminder that you can find loads and loads of fun on similar 1909 exaggerations by the Martin PC Co. Subjects include nearly all mid-western crops as well as array of animals.

Down But Not Out!

One of our York members, **Joe Ruhl**, member #441, is recuperating from a bad fall. Some of us know Joe as not only a Penn State alumnus benefactor, but an avid fan who, for years, has made the weekly treks to all of the university's games. On a recent trip Joe took a long (14-step) fall and is now home recuperating at his home, 2022 S. Queen, York, 17403

Joe collects York views, St. Patrick's Day cards and cards by the comic artist, **Richard Outcault**. We chose this Outcault comic of two Yale players with vintage gag. It was mailed from the Wilkesburg Station, Pittsburg(h) 11/26/09 and received by Harry Grosh in Florin, Lancaster County, the next day.

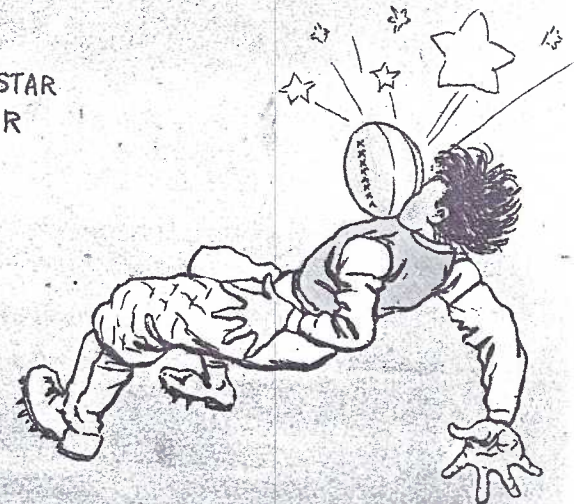
I HOPE YOU'RE ON FOR THE BALL



HE'S THE STAR PLAYER

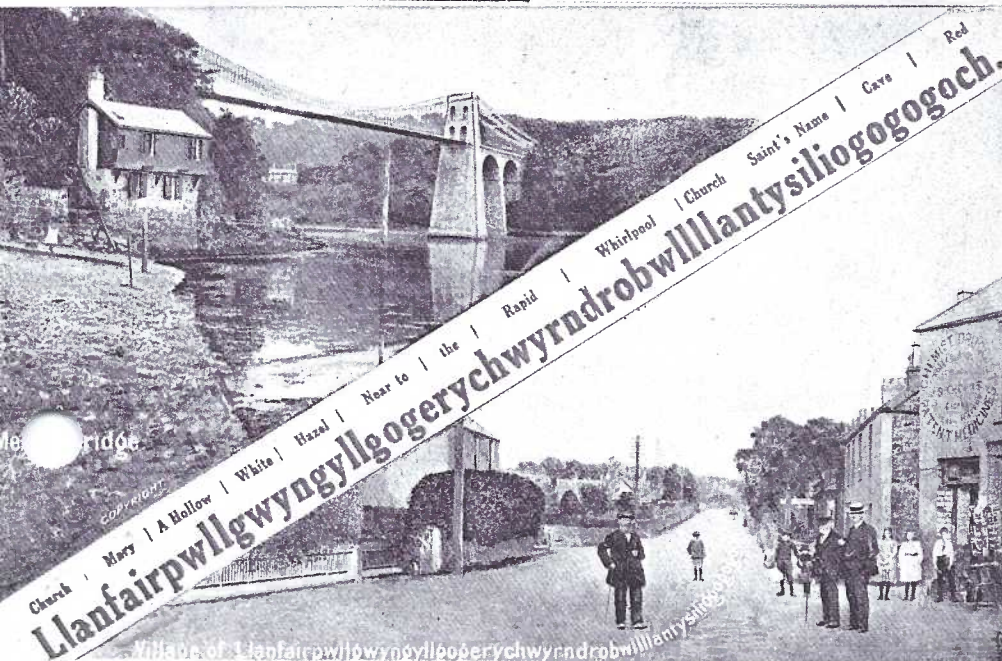
IT'S A SHAME TO SPOIL A GOOD BALL

R. Outcault



ROY STOLL

COPYRIGHT 1905 BY J. OTTMANN LITH. CO. N.Y.



**Llanfairpwllgwyngyllgogerychwyrndrob
willantysillogogoch**

In the mail of Oct. 13 the following arrived to your editor.

"Dear Jim, Long have I had the enclosed postcard wondering where it is was and holding on to it for just that reason. Thanks to the article in THE CARD, (Oct. issue) you have enlightened me. I am now sending it to you to add it to those that you're thinking of showing to disgruntled folks who complain about "Kleinfeltersville" which I think is unique and distinctive. Best wishes, **Joe Motonis**, #511, West Sunbury, Pa

Thank you, Joe. The card is by an unidentified British publisher. The multi-view and translation make it a great all-in-one topical card.

Sometimes it pays to be editor.

A Practical Suggestion

With the coming of cold weather, think of indoor activities. Weren't you going to organize your collection this Winter? See me at the Lancaster and York meetings for postcard supplies or phone 717-721-9273.

Ultra Pro archival pages - \$14 per box of 100

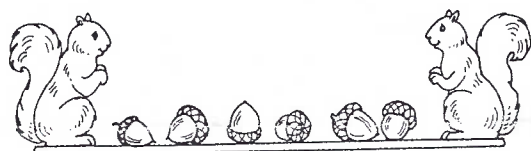
Mixed sizes only 15¢ each.

Polypropylene sleeves just \$1.50 per 100

300 for \$4, 1,000 for \$11.

Rigid Plastic Sleeves - 45¢ ea., 5 for \$2, 25 for \$9

White Plastic Dividers - 25¢ ea., 10 for \$2, 100 for \$12
paid ad Jim Ward



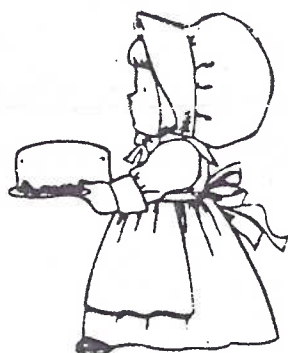
FUTURE SHOWS

Nov. 7 Belmar, NJ 20th Shore PC Show, John Taylor Pavilion. 9-4, Free admission.

Nov. 13, 14, 15 NY, NY 52nd Show by the Metropolitan PC Club, New Yorker Hotel. 11-7, 10-7 and 11-5. Adm \$3.

Nov. 20-21 York, PA York Int. Postcard Fair. York Fairgrounds. 9-7, 9-5. Adm \$3 for two days.

Nov. 27-28 Lancaster, PA. Morlatton Postcard Club, Inc. Fall Show. Farm & Home Center. 10-6, 10-5. Adm. \$1.50.



Farm and Home Center
1383 Arcadia Road
Lancaster, PA 17603
(off Manheim Pike Rte. 72)



Friday, November 27, 1998 - 10 A.M. to 6 P.M.
Saturday, November 28, 1998 - 10 A.M. to 5 P.M.

Admission \$1.50
(25 cents off with ad)

No Pre-Show Buying

For more information call
Kay Feight, (717) 263-1638
Leon Rowe, (610) 444-0641

NEW MEMBERS

#513 Pauline Johns Box 151, Maytown, Pa., 17550. Ph. 426-3164. Likes Maytown, Marietta, Columbia bridge area and Hershey Park.

#514 Mary Lou Ream 227 Wind Ave., Pequea, Pa., 17565. Likes drive-in theaters, 3-D flashers, Deeks' Puzzle postcards and local views.

#515 Sonya Mylin Same address and collecting interests as Mary Lou.

Welcome to these ladies. Try to attend our meetings. Our library, monthly PC competition, early bird sales and varied programs are at your disposal.

EAGLE EYE PAUL

Paul Smoker noticed that our Silvercraft listing of local PCs (Sept. issue) was lacking an entry. He has PC #6331, *High School, Quarryville*. Actually, it's the same view as #48529 which is titled *Southern Lancaster County Joint High School*, but it certainly belongs in the list. Thank you, Paul.

JANUARY AUCTION

The Auction Committee (**Norman Zimmerman & Co.**) and President-elect **Susan Glass** have scheduled the next auction to follow the January business meeting. This will be in lieu of a program. Actually, it's a fine program; a chance to look at and buy postcards - singles and dozens; sometimes even a whole box! Bring your cards you wish to sell to the Nov. or Dec. meetings and fill in a brief description of each lot on the auction forms which Norman will have.

The committee reminds you that lots estimated at less than \$1 will be combined, so you might consider this as you make up your lots to sell.

MORLATTON POST CARD CLUB INC.

**Presents a Display of Early Christmas Postcards
and Postcard Show**