

The Card

Volume 10,#8,Whole Number #116

MONTHLY PUBLICATION OF THE LANCASTER COUNTY POSTCARD CLUB LANCASTER, PENNSYLVANIA

Meets 3rd Monday, Farm & Home Center, Rtes. #30 and #72, Lancaster, Pa.
NEXT MEETING: August 16, 1999 at 7:00 pm, Trading from 5:30

Yearly membership is \$8 (\$2 extra for each member at the same address). Membership year is April 1 to March 31. Make checks payable to: LCPC. Send checks, correspondence and change of address to LCPC c/o Jim Ward, 1795 Kleinfeltersville Rd., Stevens, PA 17578-9669, phone (717) 721-9273. Advertisements are \$15 for a full page, \$8 for 1/2 pg., \$5 for 1/4 pg. prepaid with copy 30 days before publication. Ads of 25 words or less are FREE to members but please submit your ad for each issue 30 days in advance. THE CARD staff includes Dorathy Fry, proof reader and Gerald Hostetter. Harold and Ruth Moyer are the mailing committee. Recent circulation: 12 PC clubs, 4 PC publishers, 233 homes with 309 members; remainder for file and free distribution.

7th Annual Postcard Expo

Eleventh Hour Expo Info Set-Up

Show Chairman Walter Mowrer will be at the Farm & Home Center on Friday evening, Aug. 20 at 6 PM and looks forward to help in setting up the bourse room, exhibit easels and lobby. It can all be accomplished in less than an hour and a half with cooperation by a dozen members.

Exhibits

Barabra Mowrer and Earl Carver will accept any exhibit boards on Friday evening from 6 to 7 PM. The boards will also be accepted after 7 AM on Saturday, Aug. 21 and must be in place by 8:30 AM. If these hours are not convenient, contact Barb or Earl and deliver your boards to them prior to Friday evening.

This year First and Second Place awards in each of the four categories will receive \$10 and \$5 cash plus the usual club postcard made especially for the show. Third Place and Honorable Mentions receive the postcards as well. Best of Show, chosen by the judges from the First Place winners, will receive a cash prize of \$20 as will Peoples' Choice winner, chosen by public ballot. The latter is announced at 5 PM.

Club Table

Helping at the club's table for just an hour or two is an easy job and ideal for "sitters". It involves selling tickets, showing the club's newsletter and postcards, encouraging membership applications and selling Windows to Our Past should there be any remaining.

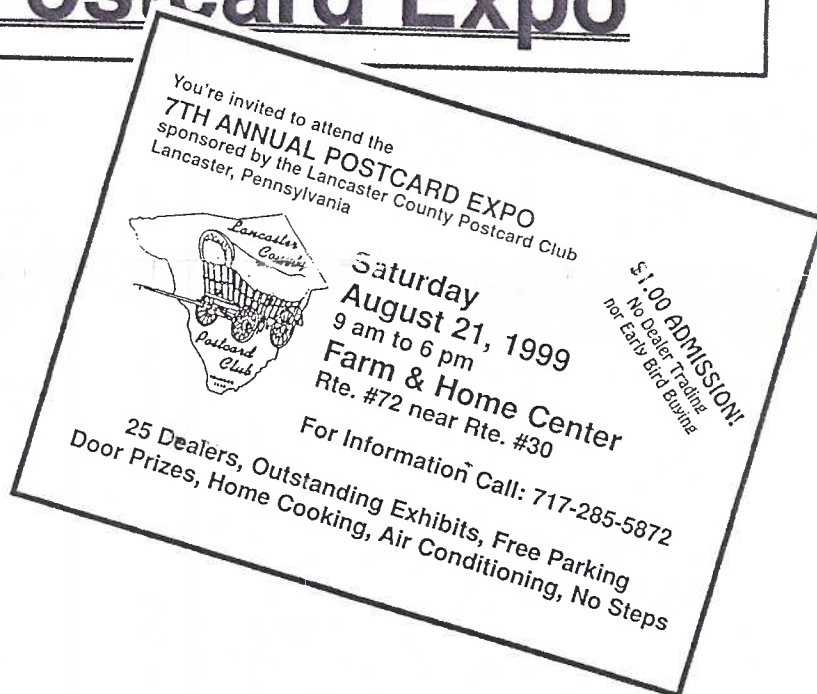
Kitchen

Once again the Moyer family will be providing home-cooked hot and cold food including desserts as well as an assortment of beverages from 9 AM until 5 PM.

Clean-Up

At 6 PM, as the dealers disburse, members are asked to help with clearing the room and lobby of tables and chairs. A dozen or more helpers can finish the job in less than an hour.

This is *your* show. As a member who hasn't provided a program or been part of a committee, it's a good way to show you still care for the well being of LCPC. We thank you for participating in this club event.



MEMBERSHIP ROSTER

The 1999-2000 roster is in its final stages (July 30) and will be ready for distribution at the August 16 meeting. It will also be distributed at the Expo on August 20. Members who haven't received it by then will find it in the mail with their September issue of **THE CARD**.

A great deal of time and effort has gone into the roster. Thanks go to **Carol Dennis, Jan Weitzel** and **Dot Fry** for proof reading and to **Jim Ward** and especially **Gwyn Fulmer** for the composition. Enjoy it and use it regularly.

PROGRAMS

As predicted, we were educated and entertained once again by **Earl Carver**. It was his July program "Time and Time Again", an over-view of time pieces from his collection of more than 1200 postcards and the information he's acquired as guide at The National Watch and Clock Museum. Thanks, again, Earl for a predictably fine presentation.

August's program will be member participation. *Bring a Favorite Postcard* - any subject, with a two minute limit presentation. We'll use the large opaque projector.

- Sept. - Rocky Springs by Howard Steinberg
- Oct. - Owls by Shirley Bubb
- Nov. - Original Lancaster Photographs and their Resulting Postcards by Jim Ward
- Dec. - Annual Christmas Party

A Boy in Summertime by John T. McCutcheon

We continue to reminisce by following the antics and tribulations of John T. McCutcheon's country boy in his delightful set of 32 postcards. These summer scenes have been abbreviated in length (as was done in

A BOY IN SUMMER-TIME



9.

THE PIRATE CHIEFTAIN—"We're Surrounded by perils. Behind Us is a Herd of Wild Buffaloes, on One Side Is an Unfriendly Shore Swarming with Hostile Natives, and in Front of Us Are Breakers and Deadly Reptiles."

A BOY IN SUMMER-TIME



11.

The Blowing-up of Dolly.

A BOY IN SUMMER-TIME



10.

"See, I ain't afraid."



12.

The Voice of the Tempter.

the first group,too) to conserve space. Only copyright dates and JTM's name have been omitted along with unused space.

In #9 and #10 we find him rafting and showing off before the neighborhood girls while his dogs intimidate the bovine. Orneriness and Temptation might be the titles of #11 and #12. The Fourth of July, a preteen

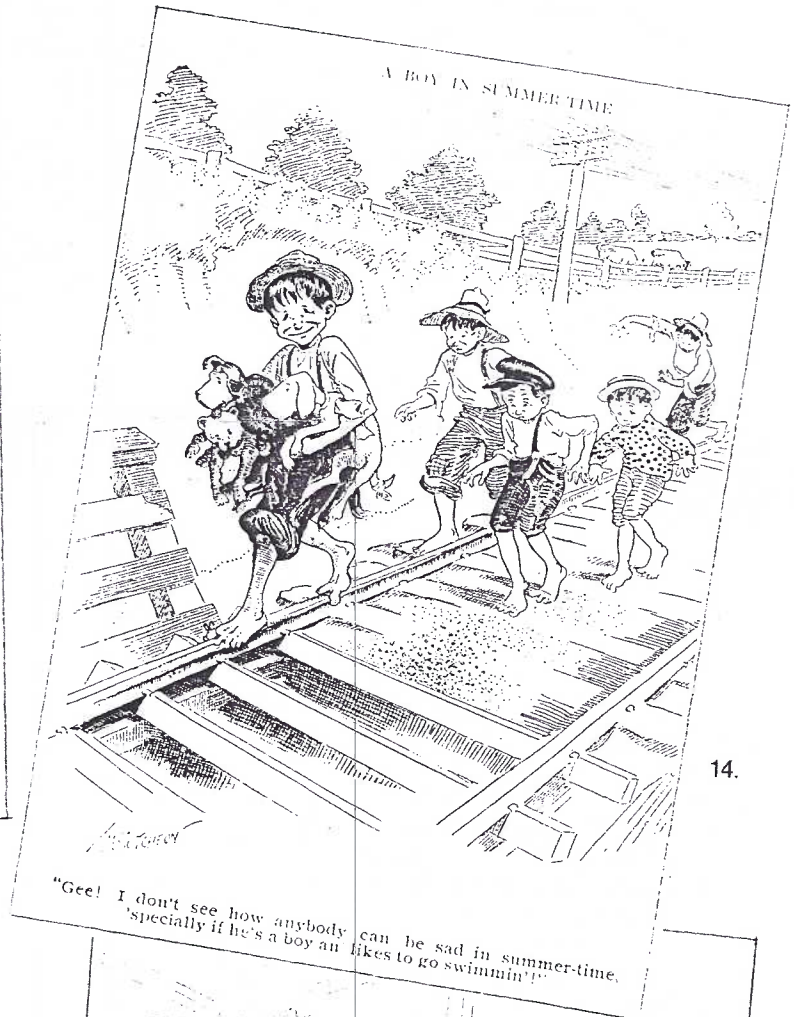
smoking binge,swimming and ice cream making round out the boy's old fashioned summer. Did you realize until you saw PC#15 that his ubiquitous mutts appear in nearly every scene?

Your editor will pay up to \$15 each(depending on condition) for #17,#27 and #28 in order to complete this article.

13.



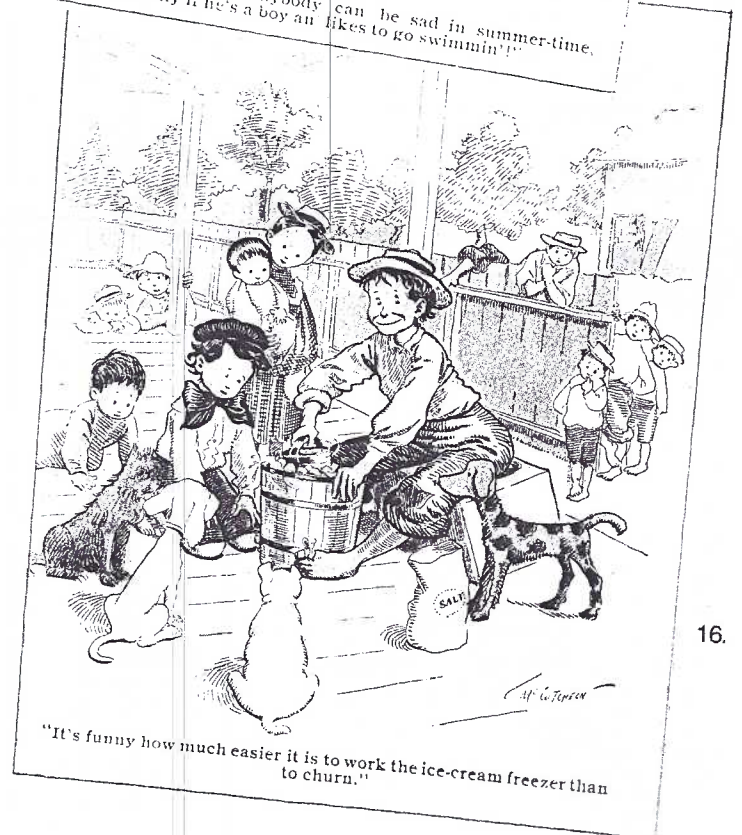
14.



15.



16.



A Tale of Three Cards Real Photos of Gap,PA offer numerous clues.

My attendance at a recent Mennonite Historical Society meeting found me in good company. The subject was the artistic Andrews family of which Fannie and her brother Jacob* were of particular interest to me. The sister-brother team were pioneers in real photo post-cards of Strasburg and Christiana. **Gerald Lestz**, LCPC member #385, has a strong interest in Strasburg and he shares, with his wife who attended with him, a comprehensive interest in local art and artists.

Seeing **Anna Groff**, LCPC #471 in the group, was an added pleasure. I knew Anna had more than a passing interest in local history and genealogy and this chance meeting proved to be profitable to both me and Anna. You'll see how as this tale unfolds.

I met with no success in learning more than the scant knowledge I had of Jacob Andrews. But Anna, hearing my plight, offered to investigate since she was more familiar with the Gap-Christiana area where Jacob might have done some PC work. I filled her in on the few facts I had collected on Jacob.

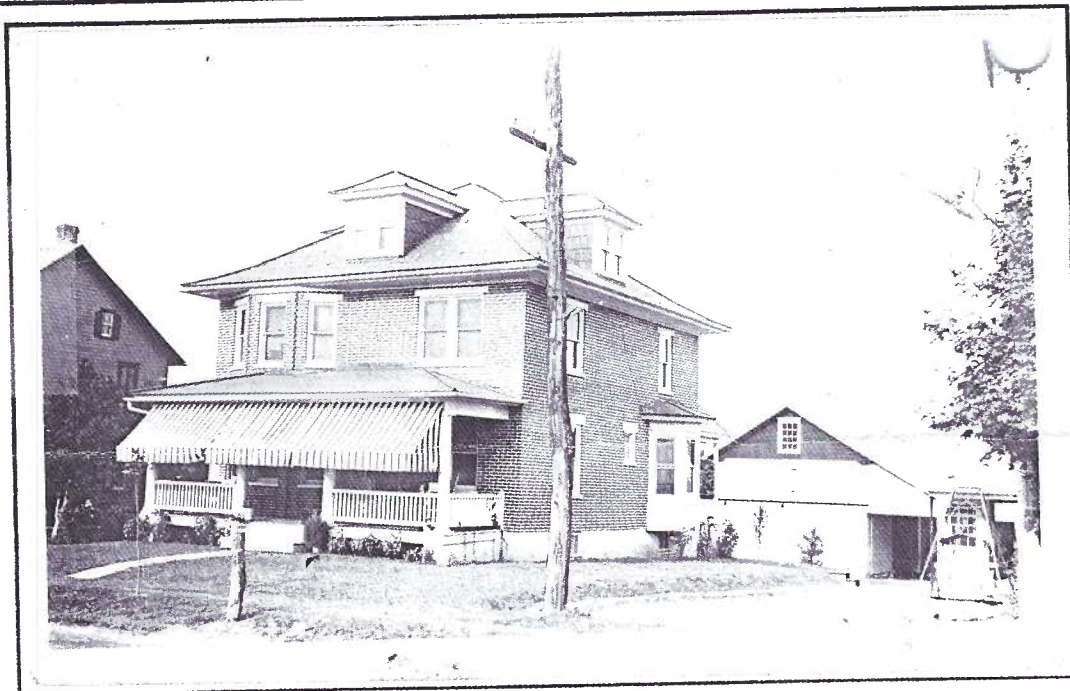
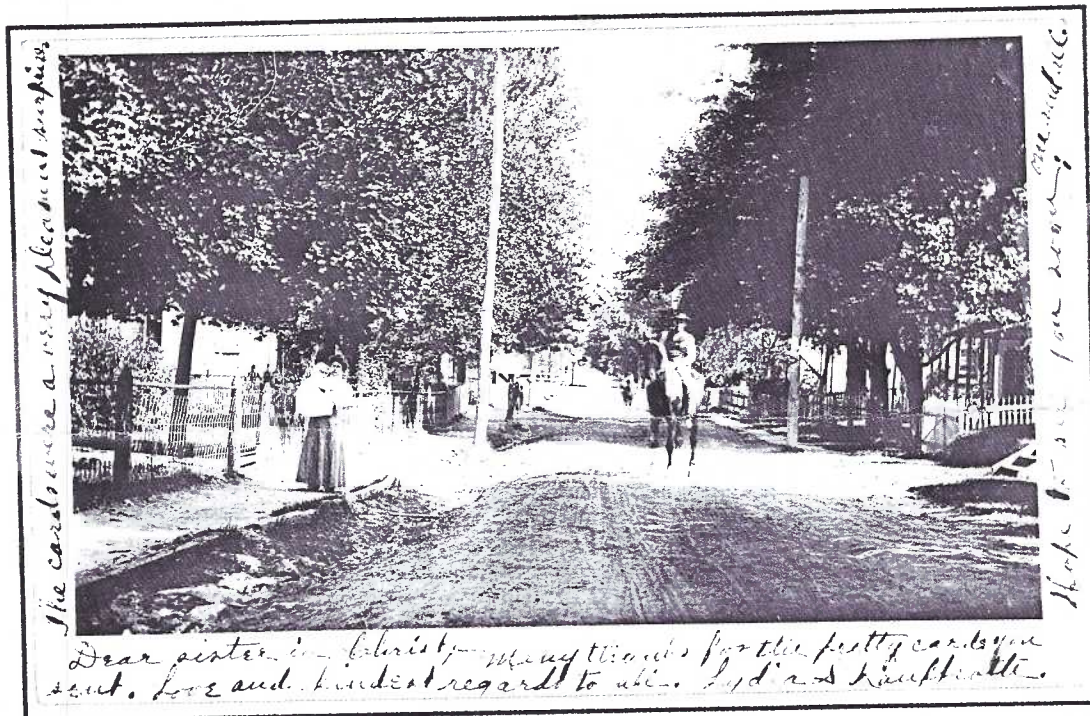
I knew I had a few real photo PCs with Gap postmarks, so the next day I sent clear copies of the scenes (shown here) and the cards' reverses to Anna with the thought that she might like to do some detective work - in her spare time?!

With her permission, I've included comments she made concerning the three real photo post-cards so you can see, first hand, how YOU too, can do detective work.

CARD #1. "I didn't 'get anywhere' with the street scene (addressed to Alice Bitler). Kauffroth is a familiar name around here. Maybe sometime I can find out who Lydia Kauffroth was." Editor's note: The more common spelling in Lancaster County is Koffroth or Kofroth. A 1910 directory lists a Rev. Geo. M. Kaufroath on Route #1, Gap. Amos Norton was the mounted carrier. If you can shed light on this family, help is appreciated. The message reads on the front: "Dear sister in Christ, Many thanks for the pretty cards you

sent...Hope to see you one and all...Love and kindest regards to all. Lydia Kauffroth." On the reverse she also wrote "Dear sisters, Often think of Birdsboro and expect (the Lord willing) to be there soon for a service. Yours in His love, and the hope of His

767 Pequea Ave., Gap. (She also owns the Gap Diner.) I can see the front dormer from our front door! (and more when the leaves are off the trees.)" Card #2 is addressed to Martin Witmer in Goodville and reads "Dear Martin, do you know the



coming. P.S. I appreciate your kindness very much."

Although it doesn't necessarily follow, the strong religious tones do suggest a minister's wife or daughter. It's postmarks: Gap, Apr. 21, 1908 and Birdsboro, Apr. 22, 1908.

CARD #2. Anna continues, "It didn't take me long to recognize the brick house. That house belongs to Helen Beaulieu,

house? From Marion". It's postmarked Gap, Nov. 18, 1906/16?

CARD #3. We continue with Anna's comments. "The card reminded me of my Grandpap's house (Ezra Stoltzfus). I have two photos of it in the mid 1940s. At that point, the porch did not go the whole way across the front of the house and I did not remember an iron fence out front. I intended to check at the

court house to see who owned it before Grandpap. He lived there as a widower from about 1928 until his death in 1944.

"I showed the PC to my older brother. He was quite sure it was Grandpop's house. Yesterday at a gathering of cousins, I showed the PC to them. There wasn't any doubt - that was Grandpap's house! One of my cousins even has part of that fence!

"I'll be ever so happy to buy it from you if/when you're ready to sell it. It's interesting to me that it was sent to Ohio and somehow made it's way back to Lancaster County!

"The house was on Hoffmeier Rd. It was torn down, probably in the 1970s, to make room for the Crestwood Estates Mobile Home Park." (A sad face is drawn here.)

Editor's note: By the time this tale is read, it will have had a very happy ending for Anna - she'll be the owner of the card.

*Gerald Lestz and others have accumulated a fair amount of information about Fannie Andrews (some consider her to be the first Mennonite female photographer in the USA - and certainly a pioneer among female photographers). But informa-

tion about Jacob is noticeably nil.

We know it was he who took up photography as a hobby, with his own dark room, and it was Jacob who taught sister Fannie the hobby. We believe Jacob moved to or lived in Christiana for a short while. Several nice RP cards of the town have ANDREWS embossed on them and this was not Fannie's custom.

Can you shed any light on Jacob? Where did he live after leaving Strasburg? Did he have a shop or studio? Did he marry and have a family? Did he develop other interests, another occupation? Under what circumstances did he die?

Please contact Anna Groff or Jim Ward.



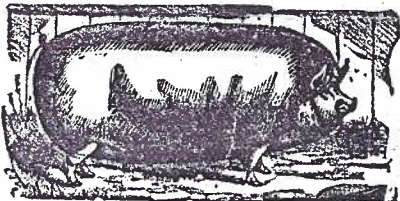
Residence of Mr. and Mrs. J. C. Schuyler, Strasburg, Pa.

EN SOU ROASHT

Tell your friends

Om Schoeneck Watshouse!

Bis Fridaug Ovet, July 15, 1938



SE HEN DES GOOT Deutsch Club Beer!

Koomet Free und Bleivet Shboad
fa es Gept en Lot Schpass fa
Eich All! Bring't de Onera Boova und Made Au Mitt!

Pa. Deutsch translation of the above card sent to Grace Snyder at Adamstown, Pa. -

A PIG ROAST

At Schoeneck Hotel!
On Friday Evening, July 15, 1938

THEY HAVE GOOD
German Club Beer!

Come Early and Stay Late
for it Will Give a Lot of Fun for
You All! Bring the Other Boys and Girls Along Also!

Postcard Dutch

Attend enough local auctions as Harold and Ruth Moyer do and you're bound to discover a few dutch cards. Actually plain back adv cards, they served as PCs when they were both mailed in the summer of '38 to a local girl. Northeastern Lancaster Co. (so close to Lebanon and Berks) still has a strong "Dutch" population - not necessarily Amish and Mennonite, but rather German Lutherans and Reformed. The town of Schoeneck translates= "pretty" (schoen) "corner" (eck). Schuyler Mellinger and his band members were not negroes.

PIG ROAST ★

—WILL BE HELD AT THE—

SCHOENECK HOTEL!

Friday Eve'ng, August 5, 1938

MUSIC WILL BE FURNISHED BY

Schuyler's Melody Makers

A FINE TIME IS ASSURED TO EVERYONE!
EVERYBODY WELCOME!
BRING ALL YOUR FRIENDS!

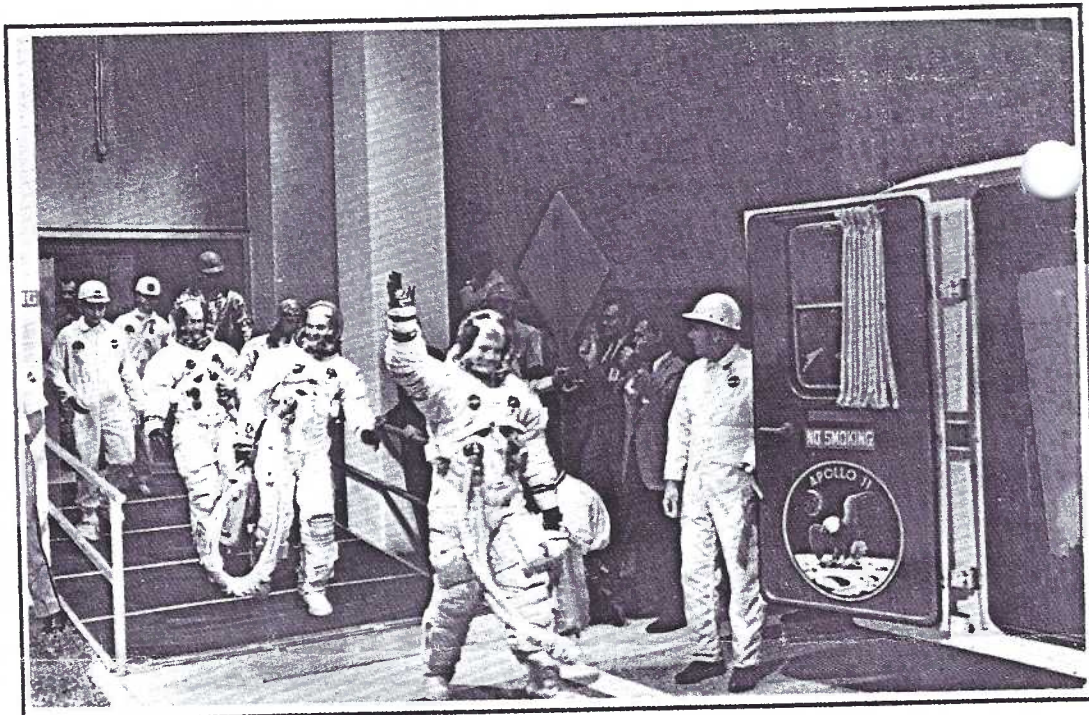


"Old" Chromes Chronicle History

When we think of chrome postcards, we think "modern, recent, hardly worth collecting, who would bother?" The fact is, there's an entire category out there of thousands of cards which, to many people, is the most important event in a thousand years of human history - man's first step on the moon.

It was 30 years ago - July 16, 1969 - that billions of people around the globe watched a lunar module touch down on the moon's surface. For six hours we were glued to the TV screen waiting, wondering and hoping all would go well when the first astronaut would take his first step on the surface. We offer here a single card of that historic event.

Before the Apollo 11 moon mission and since then, hundreds (perhaps thousands) of beautiful and informative postcards have chronicled events in space. A future article



will cover several of these events but may we remind you today, it's not too late to search out Air, Space or Flight categories in dealers' boxes to start a great collection for yourself or a child in your family. Most Space PCs are still priced under 50¢ even though they're already 30 years old!

Koppel published this card for NASA Tours at Kennedy Space Center, Florida. The Apollo 11 crew leaves the Manned Spacecraft Bldg. and enters a van for Pad 39A. Astronauts Armstrong, Aldrin and Collins entered their space vehicle which lifted off at 9:32 AM, July 16, 1969.

NEW MEMBERS

#537* Leighton Stover 261 Park Ave., Lititz, PA 17543-9552. Ph. 626-4937. He likes Lebanon County, railroads, depots, Coney Island and canals.

#545 D. Lindsay Pettus P.O. Box 1075 Lancaster, SC 29721-1075. Ph. (803) 285-9455. York, Chester and Lancaster Counties in South Carolina, bldgs., William Richardson Davis, Andrew Jackson, Catawba Indians, Catawba River, railroads of the area. Lindsay ordered our book for the Lancaster County, SC Historical Society and chose to join us after reading several issues of THE CARD. We kindly returned additional money he sent for LCPC membership to two long deceased SC historical figures. A very early English settlement in SC resulted in those familiar English county names down there, too!

#546 Krall K. Hostetter, RD2, Box 310, Myerstown, PA 17067. 866-7397. Meat packing plants, stock-yards, meat adv. on PCs, trade cards and related paper (letter-heads, etc.)

*in our last issue, Mildred Cox Knoll was inadvertently given member #537. She should have been reinstated to her original number, #384, so Leighton Stover is the owner of Member #545 from now and until forever!

And speaking of errors, thanks go to Betty Weaver for noticing the month typo in July's masthead in time. It was still possible to hand correct all 300 copies before they were distributed. Your editor is good for at least 5-6 errors a month but even that one missed our proofreader. Considering the fact that Dot was in the midst of buying a new home, packing much of 50 years accumulation in her old home and suffering the summer's intense heat, humidity and drought as well as having been teaching and entertaining us for 84 1/2 years, how would YOU have fared in her job??

MONTHLY EXHIBITS

July found 66 members attending including **Betty and Bill MacDonald** from Bangor, Maine. They bought our book (esp. for interest in early relatives from the Peach Bottom area) and then included LCPC in their July vacation trip. They will return for our Aug. Expo, too! Fourth of July boards were presented by the following-

WALT MOWRER FIRST

July 4th 1776

JIM WARD

SECOND Kids and Fire Crackers

HAROLD MOYER THIRD

The Big Bang

HONORABLE MENTIONS

EARL CARVER

Free Since 1776

DON DAVIS

Go Forth on the Fourth

Thanks to these five "regulars" for their efforts.

Themes for the remainder of the year: August - Birds (boards); September - Harvest (single card); October - Famous People in History (single card); November - Servicemen and Women; December - Christmas.

EXPO EXHIBITS

Are you working on your exhibit boards? These are the four categories. Any entry may include up to two boards per subject on - HOME TOWNS, CHILDREN, SUMMER ACTIVITIES and WINDOWS TO OUR PAST. Call **Barb Mowrer** or **Earl Carver** for details.

FUTURE SHOWS

Aug. 14, 15 Havre de Grace, MD Chesapeake PC Fair, 10-6, 10-4. \$3 adm.

August 21 Lanc., PA 7th ANNUAL LANCASTER COUNTY POSTCARD EXPO. Farm & Home Center, Rte. #72 near #30, 9 to 6. \$1 admission.

Sept. 11 Towson, MD Crystal Rm., Days Inn, I-695 exit 29, Lock Raven Blvd. Dee Delcher (410) 433-1532 for info.

RAWLINSVILLE CAMP

Scarce Souvenir Letter Surfaces

One of the functions of **THE CARD** is to compile a record of permanency for postcard history, in particular, local history. An unusual local item came to our attention and its significance is worthy of note.

The front cover of a fragile pale-green "booklet" is shown here (reduced 30%). Lacking staples to hold the contents, the eight full-sized postcard illustrations are glued to the inside binding. In addition, the paper-thin edges, with gum on the inside, are perforated so the receiver can simply tear the edge away and enjoy the collection of camp pictures and history. Remarkably, all of the edge remains with only a small section of the perforation loosened.

The black and white illustrations are all of postcards which many of us have seen on which cards "E.H. Stauffer, Publisher, Willow Street"* is clearly indicated. We recognize the backs from Express Print of Lititz, in fact, Express includes its name on the inside of the back cover beneath a brief history of Rawlinsville Camp.

Here is the order in which the "cards" appear:

Rawlinsville Camp-The Trolley Line Connecting With Millersville and Lancaster

Main Entrance to Rawlinsville Camp Ground, Rawlinsville, Pa.

Rawlinsville Camp - Facing the Tabernacle Before the Erection of Seats and Canvas Roof

Rawlinsville Camp - Boarding House Conducted by E.H. Stauffer, Willow Street

Young Peoples' Pavilion, Rawlinsville, Pa., Camp Grove

Rawlinsville Camp - The Spring That Supplies an Abundance of Pure Water to the Grounds

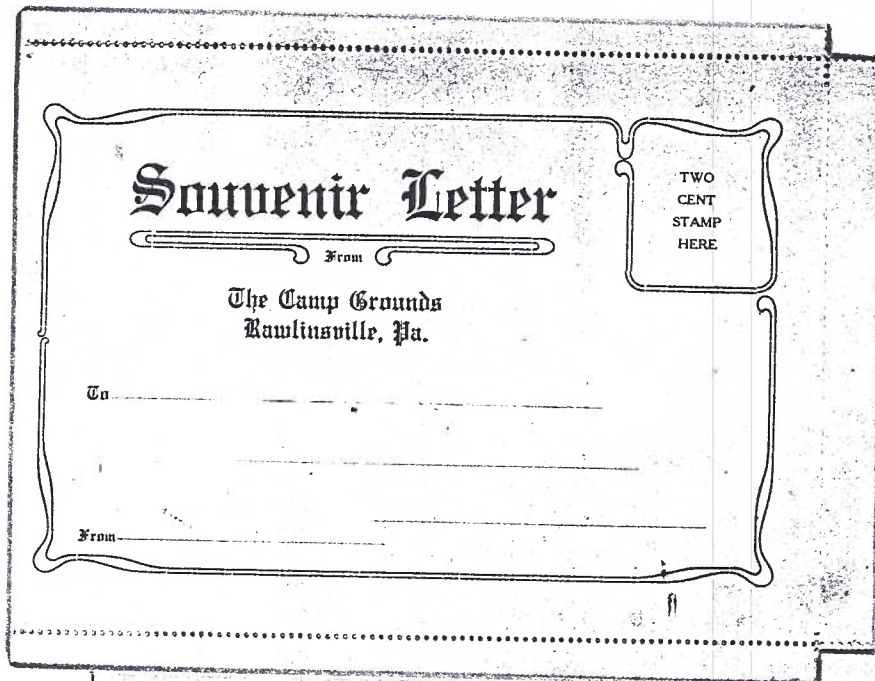
Pretty Pequea - Looking South Across the Creek

Pretty Pequea - Bathers Enjoying a Dip

(The last two were published and printed by Express.)

A brief history of the Camp Meeting is reproduced here as it appears on the inside of the back cover. The 1906 officers listing suggests the booklet was published in that year.

*E.H. Stauffer also published PCs of Rawlinsville village.



PUBLISHED AND SOLD BY
E. H. STAUFFER
WILLOW STREET, PA.

Publisher's imprint on back cover.

Rawlinsville Camp

THE Rawlinsville Camp - Meeting Association was organized in 1875 and is comprised of the Mt. Nebo, Quarryville, Fulton, Safe Harbor and Boehm's charges of the M. E. church, of the South District of the Philadelphia Conference. The first session was held in 1876 and annually since so that the 21st session opened August 21, 1906. As many as 207 tents have been up in a season and the attendance in a term has been estimated at ten to twenty thousand.

The grounds cover some forty acres of heavily shaded woodland and four springs supply excellent water. The location is pleasant and one of the most elevated parts in southern Lancaster county.

The officers of 1906 are John H. Carter, President, Mountville; George A. Miller, Vice President, Smithville; S. C. Stevenson, Secretary, Mt. Nebo; Rev. W. C. Skeath, Corresponding Secretary, Mt. Nebo; John H. Bair, Treasurer, Camargo.

Did You Know?

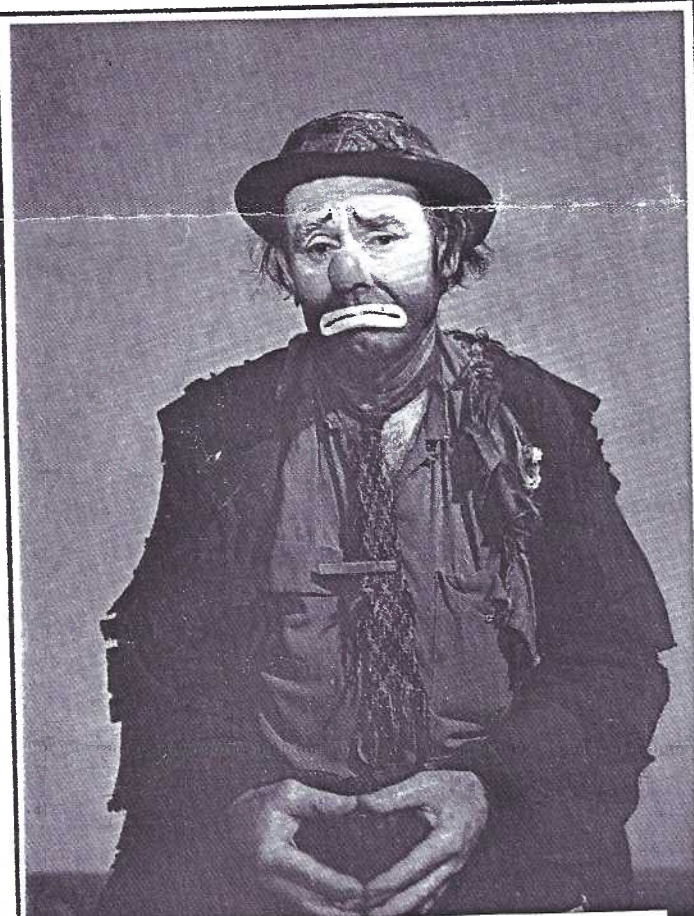
AUGUST 1-7 is National Clown Week

AUGUST 6-12 is National Smile Week

AUGUST 10-11 is National Hobo Convention

AUGUST 12 is Family Day

and so we offer this pictorial postcard tribute. From Koppel Color Cards FG-25/7221 shows Emmett Kelly as Weary Willie, perhaps the most famous clown in America during the 1940s and 1950s. Card #2 was published by Ringling Bros. and Barnum and Bailey Circus World, Inc. in 1973. The advertising postcard reads on the reverse "Nostalgic Circus Posters of all sizes available again".



DIRECTORS MEETING

Pres. Susan Glass will have 30-minute Directors Meeting, incl. her officers, at 6:30 pm August 16 preceding the regular meeting.

BITS 'n PIECES

Speakers

Earl Carver continues to provide programs for clubs and societies expounding the pleasures of collecting postcards. He recently performed for the Solanco Historical Society.

At its July meeting, the Washington Crossing Card Collectors Club (WC4) saw a slide program by Jim Ward on Lancaster PCs. He was invited to sell cards along with half a dozen WC4 members from 5:30 to 8 pm.

WC4 is a fine group with a well managed meeting, excellent library and club table and the second best monthly club newsletter. (An inside joke between editors Bette Davis and JW.) More importantly, they will reciprocate the 2-hour journey and a program for an LCPC



meeting if we'd like to hear from one of their members next year. Program Chair, take heed.

Book Report

Ray Dennis reports that mail order as well as local sales of our book, Windows to Our Past, continue at a steady pace. If you intend to pick up an extra copy or two for yourself, family or friends, he suggests you do so before Expo time (Aug. 21) as there are barely 160 copies remaining. Waiting until the day of the Expo could be too late. THERE WILL POSITIVELY BE NO REPRINTS CONTRARY TO WHAT YOU THINK OR WHAT YOU HAVE HEARD! Contact Ray or Carol at 390-7948 or Jim Ward at 721-9273.

Due to Ruth and Harold Moyer's great postcard collection story in the Lancaster Farming newspaper recently, Ida Risser bought a copy of our book. Ida, in turn, wrote about Windows in her Lancaster Farming column, "Ida's Notebook", which brought us an additional book sale...an acceptable chain reaction.

Address Change

As suggested elsewhere in this issue, Dot Fry's address has changed to 117 Farm Crest Dr, Ephrata, PA 17522. She has a neat little cottage at Fairmount Home and just across the street from Connie and Harold Brackin, members #433 and #434. As you read this, Dot is still at her old home (auction in October) but should be resituated by Sept. 1 at Fairmount. We wish her well in her new home. (How about a house-warming postcard to her?)