

The Card

Volume 10, #10 Whole Number 118
Postcard information and entertainment.

MONTHLY PUBLICATION OF
THE LANCASTER COUNTY POSTCARD CLUB
LANCASTER, PENNSYLVANIA

Meets 3rd Monday, Farm & Home Center, Rtes. #30 and #72, Lancaster, Pa.
NEXT MEETING: October 18, 1999 at 7:00 pm, Trading from 5:30

Yearly membership is \$8 (\$2 extra for each member at the same address). Membership year is April 1 to March 31. Make checks payable to: LCPC. Send checks, correspondence and change of address to LCPC c/o Jim Ward, 1795 Kleinfeltersville Rd., Stevens, PA 17578-9669, phone (717) 721-9273. Advertisements are \$15 for a full page, \$8 for 1/2 pg., \$5 for 1/4 pg., business card \$2 prepaid with copy 30 days before publication. Ads of 25 words or less are FREE to members but please submit ad for each issue 30 days in advance. THE CARD staff includes Dorathy Fry, proof reader and Gerald Hostetter. Harold and Ruth Moyer are the mailing committee. Recent circulation: 12 clubs, 4 postcard publishers, over 235 homes with more than 315 members.

MONTHLY EXHIBITS

And why shouldn't we have a field of cards in September? The theme was HARVEST and Lancaster County is/was the Garden Spot of America! An audience of 63 enjoyed descriptions given by the owners of 17 harvest cards. To all who participated, THANKS for your information and entertainment.

DOT FRY FIRST Prairie firewood (buffalo chips)
HARRY LINES SECOND Threshing machine
CAROL DENNIS THIRD Woman gave man an apple
and she gave him a pear/pair (of babies)

HONORABLE MENTIONS

JIM WARD Peach harvest, Clay, PA
RUTH LINES Tobacco harvest, Lancaster
BOB KRAMER Timber harvest, Washington state
RUTH FRANKHOUSER Exaggerated strawberries
WALTER MOWRER Tobacco, Grandview Farms
DON DAVIS Grape harvesting
RUTH MOYER Exaggerated potatoes
HAROLD MOYER Exaggerated onions
EARL CARVER Sturbridge Village harvest time
MARY DARRENKAMP Roadside produce, tobacco
BILL MIDDLETON N.H. pickup baler, 25th anniversary
MIKE MIDDLETON 1913 Lanc. Fair announcement
BRAIN FRANKHOUSER Harvest services, 1907-08.
Lutheran Church, Strasburg

October theme - Famous People in History (single card)

November theme - Servicemen and women (board)

December theme - Christmas (board)

Need a little incentive? \$5=1st place, \$3=second, \$2-third



When you hear the owls hooting,
Get your Jack o'lantern out,
Put on your shroud and hurry,
For ghosts should be about.

DESIGN COPYRIGHTED, JOHN WINSCH, 1911



HALLOWE'EN
JOLLITY!

DESIGN COPYRIGHTED, JOHN WINSCH, 1913

The solemn owl and the pumpkin gay
Will dance all night till break of day
For this is Hallowe'en so jolly
The time for fun and the night for folly!

Winsch Halloween cards were sometimes blessed with the beautiful art of Samuel Schmucker. The 1911 issue above includes a pair of owls that definitely give a hoot for each other. "Halloween Jollity" has a dancing trio - owl, jack-o-lantern and little girl. In her Winsch Halloween checklist by Helen Leler (it's in our library) lists this 1913 artwork as "probably Schmucker".



OWLS - They're Halloween symbols but they're also with us the year 'round. Learn all about OWLS on October 18 from WHO-O-O?
.....Shirley Bubb. That's who!

IN THE NEWS A now-and-then column offering recent news stories as we know them on post-cards. (In fact, **THE CARD** has been doing this very thing for years. Beginning with this issue, it has a title!)

New Life for Grubb Lake

A 54-acre tract of wooded and open green space with a lake could become a public park. The site, bordered to the north by the Ironville Pike, is in West Hempfield Twp. The 13-acre lake served as a water supply since the 1950s for neighboring Mountville Boro which no longer uses that source.

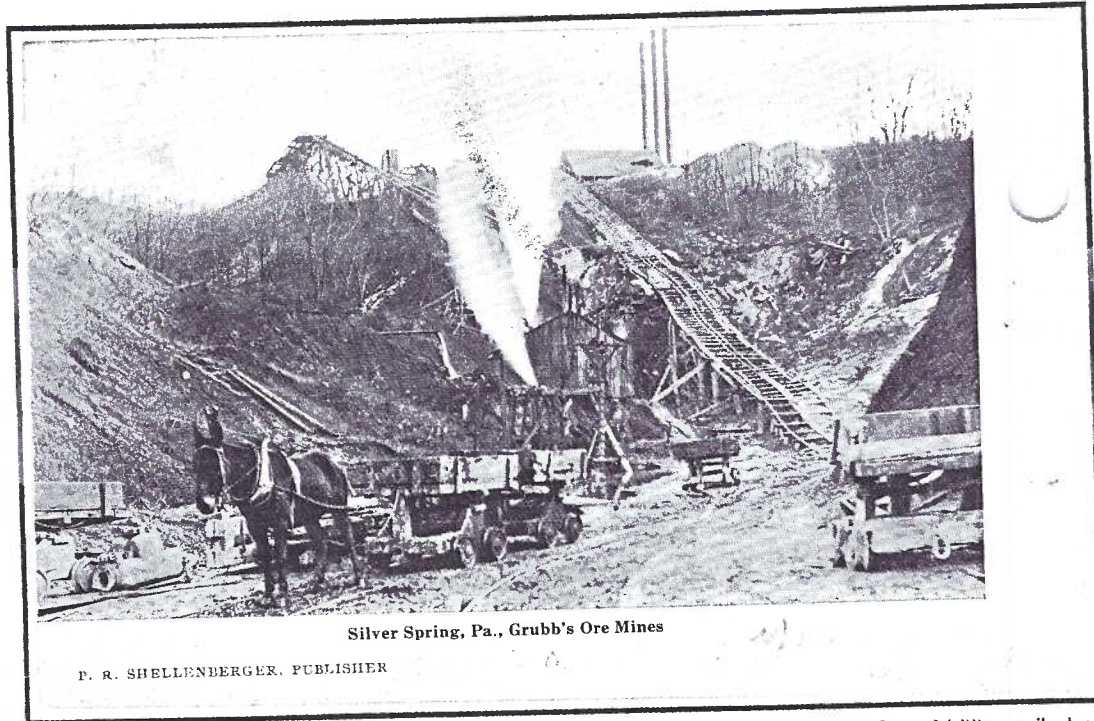
For the twenty years prior, Lake Grubb was owned by a private group of outdoorsmen. They purchased it from the Grubb estate and here's where our old postcards enter the picture.

Although a hematite deposit was known as far back as 1737, the largest deposit in PA was found on the Greider farm between 1825 and 1832. By 1851 the Chestnut Hill Iron Ore Co. was incorporated and mining of the ore was in full swing.

Grubb, Haldeman, Smith and Hogendobler were principle owners of operations along the ridge. Along the nearby Susquehanna River iron furnaces sprang up like weeds between Marietta and Columbia. The canal barges and competing railroad lines helped make the area the industrial hub of Lancaster County

for a generation. The local companies were hit hard by the financial panic of 1837. Massive iron manufacturing moved to Pittsburgh thanks to a man named Carnegie. By World War I The Susquehanna Co. of Columbia was the sole iron furnace and rolling mill in the county.

Eventually pumps were unable to keep the mine dry enough for working. The Grubb operation ceased in 1907 as railroad ties, ramps, etc. were flooded in 1907.

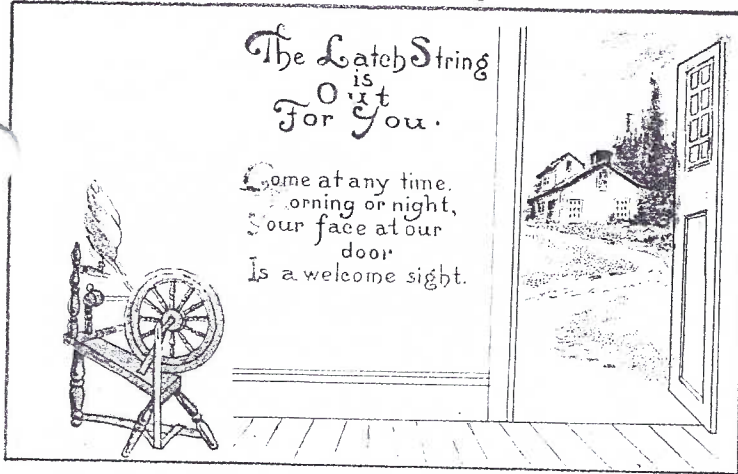


Silver Spring, Pa., Grubb's Ore Mines

P. R. SHELLENDERGER, PUBLISHER

Mule-drawn railroad cars are seen in this d/b PC printed by Express Printing Co. of Lititz; mailed at Columbia 3/31/1910. Other views by publisher P.R. Shellenberger of nearby Silver Springs - 1) Bruckhart's Station, P&R RR, 2) U.B. Church, 3) General Store (a common practice of local publishers - to include their business on a postcard). The view above is also known as an u/b real photo postcard. Below, left, RP shows two mules w/carts and 15-man work crew. Below, right, is a 6-man/boy steam shovel crew and white-sleeved supervisor(?).



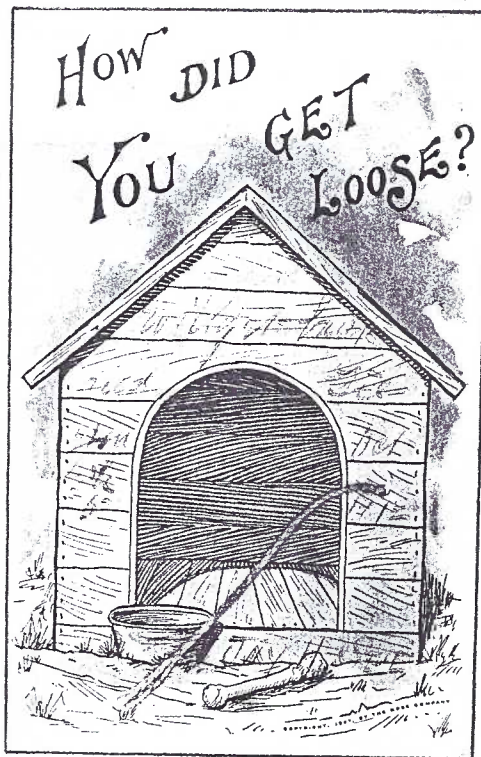


Because our readership spans more than eighty years, we'll begin by explaining to the youngsters that a LATCH is a fastening or lock, mounted on the inside of the door, with a bar that fits (usually drops) into a notch along the door jamb or frame.

LATCH is an old fashioned term, as are LATCH KEY and LATCH STRING. The latch key could open the door from the outside and was generally large. At inns or hotels it was often called the passkey. If a passkey had special cuts it could open *all* the doors in the establishment. It was referred to as the manager's skeleton key or master key.

Some dictionaries read like small encyclopedias. My 1970 American Heritage defines all of these terms. (Probably why I keep it around.) For a different perspective I bought a Webster's in 1992. I like it too.

In addition to latch key and latch string, the 1992 Webster also lists LATCH CHILD. Now here's a term that's far from old fashioned. Too bad it's become too common place. "A child who comes home from school to an empty house where one or both parents work" would have been an unthinkable definition for the the 1950s, 60s or even 70s. Interestingly, we've discarded *latch* and replaced it with *lock* when it's on a door, but we've retained the old word *latch* for the child of this decade.



Do their parents feel guilty thinking of their child as a LOCK CHILD?

The cards shown are all divided backs. Those with cancellations are dated 1912 and 1913.

LATCH STRINGS are centuries old. They were prevalent in poorer homes and often found on outbuildings around farms. Keys and locks, including passkeys, have been used for centuries, too - in dungeons, castles and up-scale homes. The latch string was tied to the latch bar on the inside of the door and slipped through a hole to hang on the outside. One entered the house by pulling the string which lifted the latch bar. The door could be kept shut to keep the interior warm and dry from inclement weather. At night (or if you didn't wish company) the string was pulled inside.

Our Welcome card and the doghouse card are Add-ons, with attached strings - typical Rose Company postcard novelties. F.A.Owens published the Remember card. The top left card is by an unknown publisher.

On an 1884 postal card mailed from Gainesville, FL to Macon, GA are these sentiments - "...you will be greeted with balmy breezes from silvery lakes and when the orange dispels its perfume and the roses speak of love and of light, come and eat a 'crust - you will find the latch string on the outside."



Blue Stone Ramblers

IDs on scarce D.B.Landis card are uncovered by Anne Steinberg

This job is made easier every day when members like **Anne** (Anne with an "e") **Steinberg** have postcards on their minds most of the time and then follow through with a little leg work. Case in point - only a handful of us local collectors have the DBL (David Bachman Landis) view of the Blue Stone Ramblers. Who were they and when were they active? Those are questions that could be answered with a little research but more often than not, they lie in wait for a gal like Anne who'll get up off her duff and get the job done!

Anne saw a local article about a musical at the Reformed Church in Quarryville. She saw a familiar face and read further that one of the performers, John "Skip" Wise, had played for the Blue Stone Ramblers.

That name rang a bell. **Howard S.** remembered it was a DBL card. Anne took a copy of the card to Skip and, after a joyful reunion with his old buddies - via the postcard view - he offered a complete run down of the entire crew!

So for the chroniclers who own the card, we offer the following IDs compliments of Anne and Skip and Howard and no, Howard did **NOT** give up his Blue Stone Rambler postcard!

AS WE GO TO PRESS

LCPC Member #492 made the headlines! Our southern-most member, David Kalies, was named **Collector Of The Month** by Barr's Post Card News. The Key Wester (Florida) collects Alligator Borders (see ads in recent issues of **THE CARD**). It's a right nice article on starting, trading, buying and selling postcards that are views and yet topicals, too! He won a year's subscription to Barr's!

The Barn Owl gets its name from occasionally nesting in such places, but it also nests in hollow trees, grain elevators, abandoned badger burrows and locally, in the chimney of a farmhouse near Clay. A great mouser, "a pair with seven young might catch 3990 mice in 57 days" reads the reverse of this Nature Press card sold by the **Bowman's Hill State Wild-flower Preserve** at Washington Crossing State Park, Bucks County.



BLUE STONE RAMBLERS
GEO. S. GEHMAN, Mgr. Lancaster, R. 2, Pa.

IDs of The Blue Stone Ramblers courtesy of John "Skip" Wise Front Row

George Gehman, mandolin, vocalist and manager, Leonard "Snowball" Tillman, vocalist and comedian and Arthur "Art" Herr, guitar.

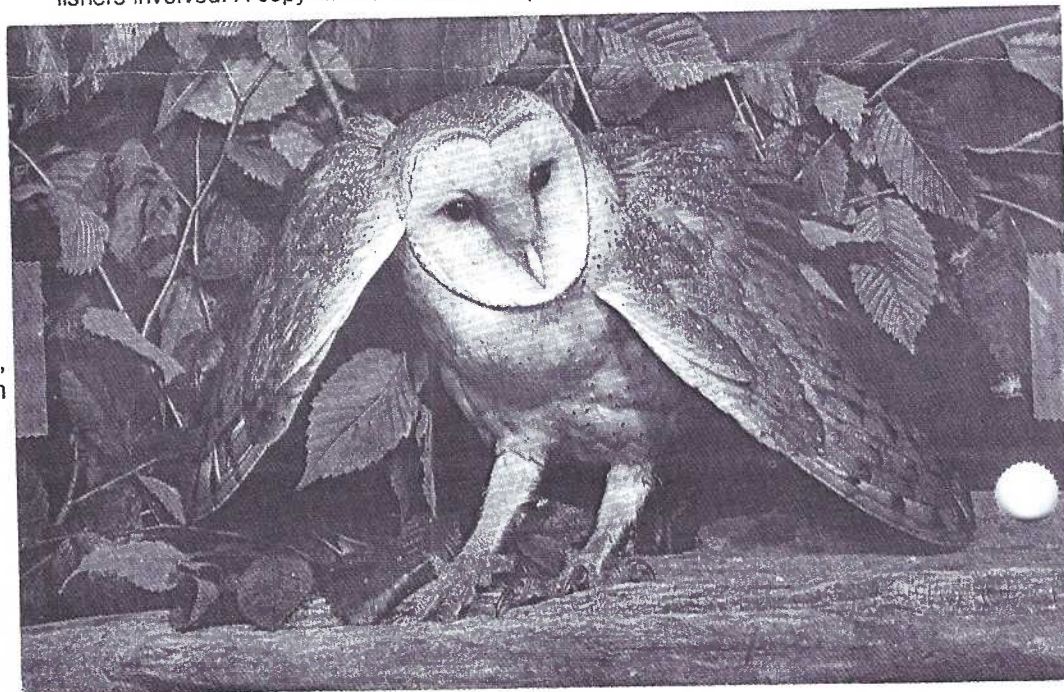
Back Row

Robert "Hack" Hackman, bass fiddle, Layton "Sonny" Christ*, tenor banjo and guitar, Lester "Les" Christ, accordion, John "Johnny" Cooper, guitar and vocalist, Dawson "Zack" Cooper, violin and vocalist, Franklin "Frankie" Heckendorn, violin and John "Skip" Wise, violin.

Notes: Sonny and Les Christ were not relatives. Johnny and Zack Cooper were brothers and were responsible for the name **Blue Stone Ramblers**. They were born and raised in the Blue Stone Valley of West Virginia.

* your editor's notes show that Charlie Griffiths (LCPC member #4, deceased) knew Sonny Christ, but not the others. According to C.G., Charlie and his brother hired out to do some banjo playing and singing as youngsters in some of Lancaster County's hot spots.

FREE INFO. For his September program, "Original Photos of Local Postcard Views", Jim Ward handed out a page of data compiled from the photos and the four postcard publishers involved. A copy will be mailed on request. See masthead.





A Whitney Made postcard -
 "Strange sound are heard
 Strange sights are seen
 Upon this night of Halloween.
 If it's my fate to see an elf
 I hope 'twill be your very self."

ROSTER CHANGES

JOHN SPRENKLE'S phone should be 792-4710.

JUDY and PAUL SMOKER suffered transpositions. Phone is 768-3283 not 3238. Zip is 17534, not 17543.

LINDSAY PETTUS'S collecting interests include Wm. Richardson Davie (not Davis). He was Andrew Jackson's "finest military officer".

MEMBERSHIP

GINNY DORSHEIMER #431 has been reinstated. She lives at 3613 Hillcrest Rd., Harrisburg, PA 17109., phone 717-652-0776. Collects golliwogs, Teddy Roosevelt and Roosevelt bears as well as local views by Dorsheimer of Elizabethtown.

JOE RUHL #441 passed away Sept. 2, 1999. Although he never made it to LCPC meetings, Joe enjoyed **THE CARD** and was a very good personal friend for the ten years I knew him. Joe was a native of York, PA. and a Penn State graduate in forestry. He served in the Army Corps of Engineers in the Far East as well as an instruction officer during the Korean War. He was a Penn State football fan, traveling from York to every home and away game. He was most generous to his alma mater, establishing a \$500,000 scholarship fund at Penn State York. Above all, he was a gentleman and he will be missed by his friends and those whom he helped.

FUTURE SHOWS

Oct. 9 TOWSON, MD. Days Inn, Exit 29, Loch Raven Blvd.

Oct. 22-23 TIMONIUM, MD. Fair Grds.

NOV. 19-20 YORK, PA. York International Postcard Show. Fair Grounds.

NOV. 26-27 LANCASTER, PA. Morlatton Postcard Show. Farm & Home Center.

H.B. Griggs did the art for this whimsical Halloween card published by Leubrie and Elkus in Series 2272. Griggs' popular artwork is found on cards of most holidays. The enigma remains after ninety years - we know so very little about this artist whose work appears on nearly 500 cards - not even the artist's gender!

SEPT. BITS 'N PIECES

Bargains were available at these members' tables from 5:30 PM - Paul Weidman, Bill Buckwalter, Mike and Bill Middleton, Walter Mowrer, Ruth and Harold Moyer, Jim Ward and Dick Bishop (Dick has entertainment books for year 2000 at a discount price of \$21!)

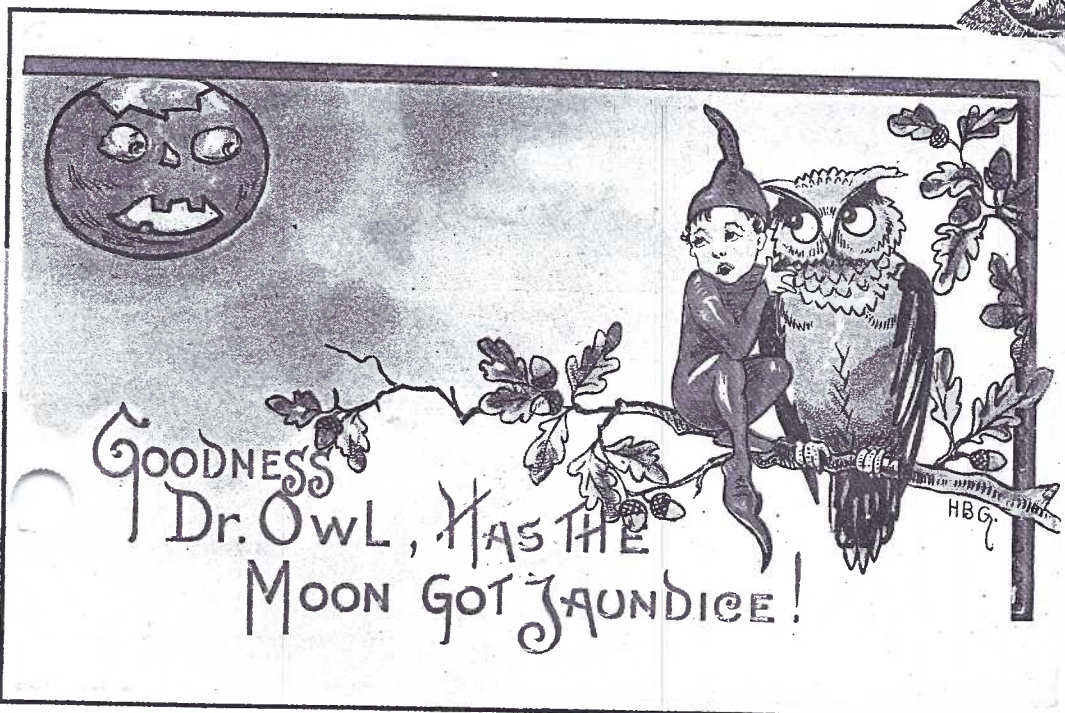
Mary Darrenkamp is serving as a Nominating Committee and welcomes your offers and recommendations for these jobs in 2000: Vice Pres., Secretary, Treasurer and two Directors. Of course we'd be most happy to see Secretary Mary Ann Guntow and Treasurer Barabra Mowrer remain at their desks since they've

both done super jobs! Walter Mowrer, 1999 VP, is automatically President in 2000.

Door prizes of 100 PC sleeves were won by Mary Ann Guntow, Norman Zimmerman and Walt Mowrer.

Linda Mylin is looking for a postcard of the Kraybill or Graybill Meeting House in Mount Joy. Do you have one for sale?

Expo Chairman Walter Mowrer concluded his financial report. Expenses totaled \$1038, income was \$2152 with a net profit of \$1284. Another great job. In 2000 Walt will be President. We need a good member to lead the Expo team and relieve Walter.



LCPC Library Gift

BESSIE PEASE GUTMANN: Over Fifty Years of Published Art

by Karen A. Choppa, 1998, Schiffer Publishing Ltd.

We are very pleased with a gift from Dot Fry to our club library. The book, Bessie Pease Gutmann, Over Fifty Years of Published Art is a monumental work with more than 350 full color illustrations as well as a price guide.

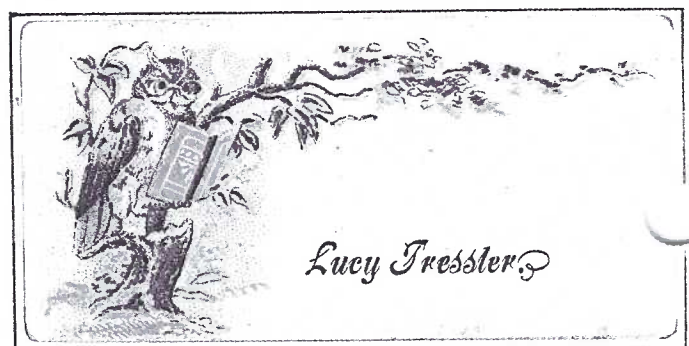
Approximately 70 different postcards are known by the popular artist whose subjects were primarily babies and young children. The cards are from the 1907-1915 era in the artist's life, although the earliest PC dates are 1909. Gutmann's work is sought by not just PC collectors, but an avid group of admirers who, in addition to looking for the postcards, also seek her work in children's books, on calendars and throughout the world of fine prints. So, should you be fortunate to find a BPG postcard, expect the price to be a bit salty.

In 1990 Dr. Victor J.W. Christie of Ephrata, published a book about Bessie, her life and her art. The research Dr. Christie applied to this tome has no parallel. The book is long out of print, but we are fortunate to have the Choppa work to study and for this we thank Dorothy Fry so very much.



Our two postcard illustrations have a 1907 copyright. Bessie's open block signature is in the lower left side of the illustrations. The publisher's name, Gutmann & Gutmann (her husband and his brother) appear along the bottom edge. These were the first of Gutmann and Gutmann's paired prints and were printed and distributed by Reinthal & Newman who were noted for their quality postcard work..

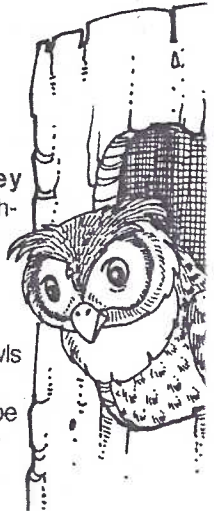
Bessie's nieces were the models. "Falling Out" was originally entitled "Twixt Smile and a Tear" while "Making Up" was first known as "Lips That Are for Others". Choppa values the postcards at \$30-\$45 and \$30-\$60, respectively, ranges being for good to excellent. A Gutmann PC checklist will be found on the next page.



Lucy Tressler's calling card with an studious owl. Might Lucy have been a teacher...or a future teacher?



The Great Horned Owl will be among the species we'll see in the October program "Owls" by Shirley Bubb. Shirley has been bird watching for 35 years. However, it's only since she and her husband Ray joined LCPC that they've begun a collection of birds on postcards. When she chose the subject of Owls for a program the hunt was on for owls on PCs and she and Ray will be quick to attest, they're not an easy find.



The Snowy Owl, a Pennsylvania visitor, also appears on a trade or advertising card issued by George H. Miller. His hotel was at 23 and 25 North Queen St., an address later occupied by the twin towered Woolworth Building. Featured on both cards were the Ladies and Gents Dining Rooms. Trade cards were the advertising medium for the generation that preceded the Golden Age of post cards.



Postcards with art by Bessie Pease Gutmann

40 Cards with publishers' numbers.

#200 The New Love
#201 The Lone Fisherman

#500 Rosebuds
#501 Senorita
#502 Waiting
#503 Daydreams
#504 Poppies
#505 I Wish You Were Here

#700 Captive
#704 The Foster Mother

#800 Margaret
#801 Betty
#802 Virginia
#803 Alice
#804 Lucille
#805 Dorothy

#900 Contentment
#901 Come Play With Me
#902 All is Vanity
#903 His Majesty
#904 Dessert

#1000 Sunshine
#1001 I Loved to be Loved by a Baby
#1002 In Slumberland
#1003 Baby Mine
#1004 The Sweetest Joy

#1100 Repartee
#1102 Sweet Sixteen
#1103 Speeding
#1104 Happy Dreams

#1200 Tasting
#1201 Seeing
#1202 Smelling
#1203 Hearing
(perhaps unnumbered "Feeling" belongs here = five senses?)

#1299 The Capture
#1300 The Baby
#1301 Off to School
#1302 Debutante
#1303 The Bride
#1304 The Mother

Victor Christie speaks of "phantom cards" by BPG appearing in foreign languages that were never seen in the USA such as In Disgrace (French) and A Little Bit of Heaven (German).

Cards not identified with publishers' numbers.

Autumn
Baby's First Christmas
Blue Bell
C.Q.D.
Cupid's Reflection (3 versions)
Delighted
Fall
Falling Out
Feeling
The First Born
The First Lesson
Girl in Hat
The Happy Family
Love at First Sight
Live is Blind
Love or Money?
Making Up
(Mother w/baby in bassinet)
Music has Charms
My Bruzzer had a fever...(poem)
Rag Time
Skater
Spring
Stolen Sweets (unsigned)
Strenuous
Summer
Sweetheart
Verdict: Love for Life

Did You Know?

OCTOBER is National Roller Skating Month

OCTOBER is National Sarcastics Month

OCTOBER is Spinal Health Month

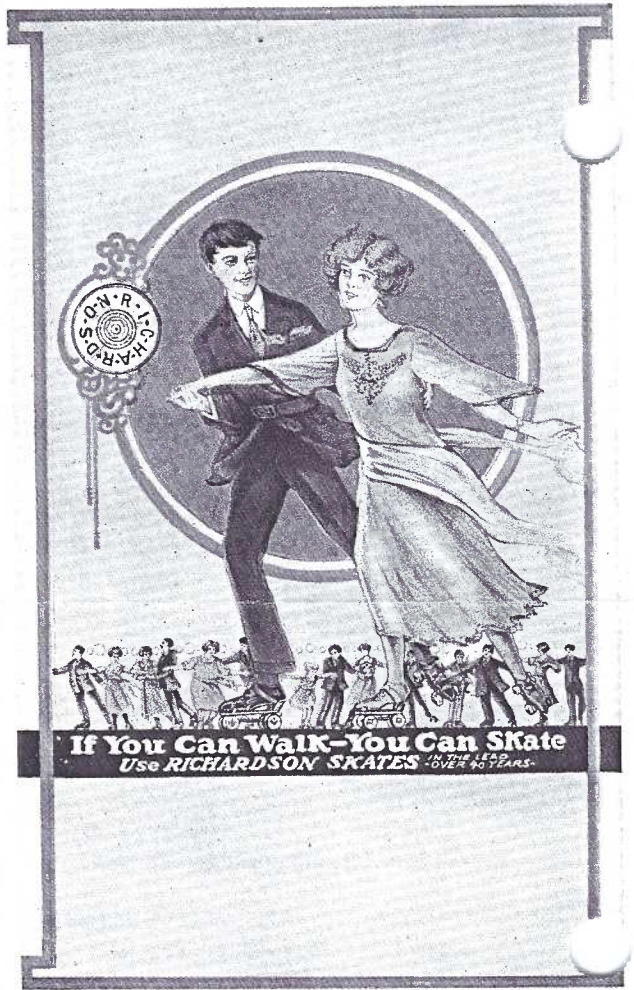
OCTOBER 22-28 is National Save Your Back Week

and so we offer this pictorial postcard tribute. The advertisement card features Richardson Skates - "in the lead for 40 years". It's by Riverside Printing of Chicago. With apologies to our Irish members and mothers, too, we include two comics. (The reduced PC is by The Rose Co.)



Every body skates but Mother	The rest are all out skating
She mends every day	Or falling on the floor
Pants for Pa and Brother	Making more work for Mother
Maud and sister May.	To mend some more.

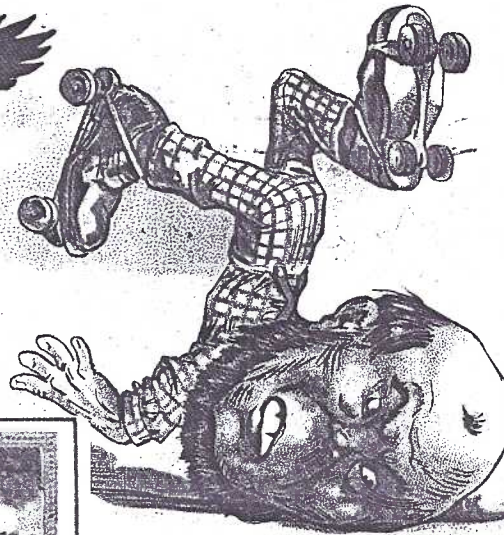
Copyright 1906 by the Rose Co



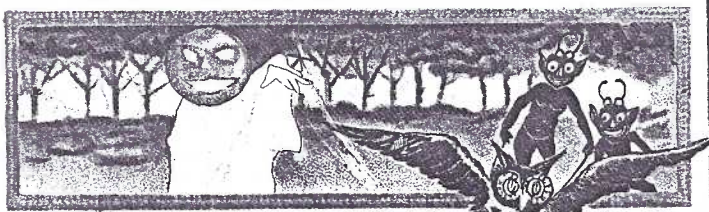
Our second **Griggs Halloween** card is in Series 2262 by L&E.

The scared youngster reminds us -
"This is the night

when Spooks and Things
Are Trailing round you know!
When Owls hoot!
And Goblins scoot!
And Witches come and go!"



The Irish are noted for butting in
And spilling all their gore;
But should not try to own the place
By sweeping up the floor.



This is the night
When Spooks and Things
Are Trailing round, you know!
When Owls hoot!
And Goblins scoot!
And Witches come and go!

Make it a point to attend our Halloween meeting and bring your family, especially the children. **Shirley Bubb** will have audio tape, slides of postcard owls and real owls for her program - PENNSYLVANIA OWLS. Our speaker just finished five years as President of the Lancaster County Bird Club. In 1984 she and Ray contributed to the popular Guide to Birds of Lancaster County, PA. Shirley has also been the official volunteer ornithologist for the North Museum in Lancaster. This is an educational/entertainment program - the kind LCPC is noted for - and in October it will be by an expert with a flock of credentials!