

The Card

Volume 10, #12. Whole Number #120

MONTHLY PUBLICATION OF
THE LANCASTER COUNTY POSTCARD CLUB
LANCASTER, PENNSYLVANIA

Meets 3rd Monday, Farm & Home Center, Rtes. #30 and #72, Lancaster, Pa.
Christmas Party: Dec. 20, 1999. Doors open 4 pm. Dinner at 6 pm.

Yearly membership is \$8 (\$2 extra for each member at the same address). Membership year is April 1 to March 31. Make checks payable to: LCPC. Send checks, correspondence and change of address to LCPC c/o Jim Ward, 1795 Kleinfeltersville Rd., Stevens, PA 17578-9669, phone (717) 721-9273. Advertisements are \$15 for a full page, \$8 for 1/2 pg., \$5 for 1/4 pg., business card \$2 prepaid with copy 30 days before publication. Ads of 25 words or less are FREE to members but please submit ad for each issue 30 days in advance. THE CARD staff includes Dorothy Fry, proof reader and Gerald Hostetter. Harold and Ruth Moyer are the mailing committee. Recent circulation: 12 clubs, 4 postcard publishers, over 235 homes with more than 315 members.

PROGRAMS - past, present, future Christmas party/meeting

Our December business meeting is shortened to a mere 15 minutes. It's preceded by a home-style covered dish meal which begins promptly at 6 PM. The venue is the Farm and Home Center - using the entire auditorium and kitchen facilities. LCPC's Kitchen Committee, namely **The Moyers**, will provide hot ham and turkey and hot and cold beverages and place settings. Members are asked to bring a hot or cold covered dish or dessert and serving utensil. The kitchen can provide you with "warm-up" facilities. Bring your vittles in time to sit and eat promptly at 6 PM.

As announced in last month's **CARD**, **Dede Schaeffer** will be in charge of the Christmas program. You can expect to see plenty of Santas (as previously mentioned) but Dede informs your editor that there will be a much more comprehensive overview of Christmas including *all types of Christmas items*.

As a few of you remember, several years ago Dede presented a grand program with examples by publisher Louis Prang. Many of the earliest printed Christmas items were done by Prang and you can count on seeing many of these interspersed with traditional postcards and greeting cards. Dede has an in-depth collection of choice material. It will be a treat to sit back and enjoy a "second dessert" as we view her colorful Christmas treasures.

November's Rocky Springs Event

We looked forward to Howard Steinberg's Rocky Spring postcards - most of them real photos - and were not disappointed. Howard insists that none are for sale. He's passing them on to his son. We trust your word, Howard, now how do we contact your son?

Jere Greider contacted an amateur diver from Sinking Springs, Berks County, and following Howard's presentation, Paul Miller had a table of show-and-tell items he found at the bottom of the Conestoga River in the Rocky Springs boating area. At depths of only 2 to 4 feet, sifting silt isn't too difficult. Finding bed rock with cracks that hold little treasures is a different matter. Most coveted items were carousel rings, a Hires root beer soda mug complete with spoon, and an engagement ring.

The card above features Santa accompanied by the Christmas Angel. The angel is in pink robe. Santa's robe is bright blue with orange circles. Red-clad Santa was an American idea. European Santas, Father Christmas and St. Nicholas appear in many different colors dispelling the myth by some dealers that non-red Santas are always scarcer.



January's Annual Auction

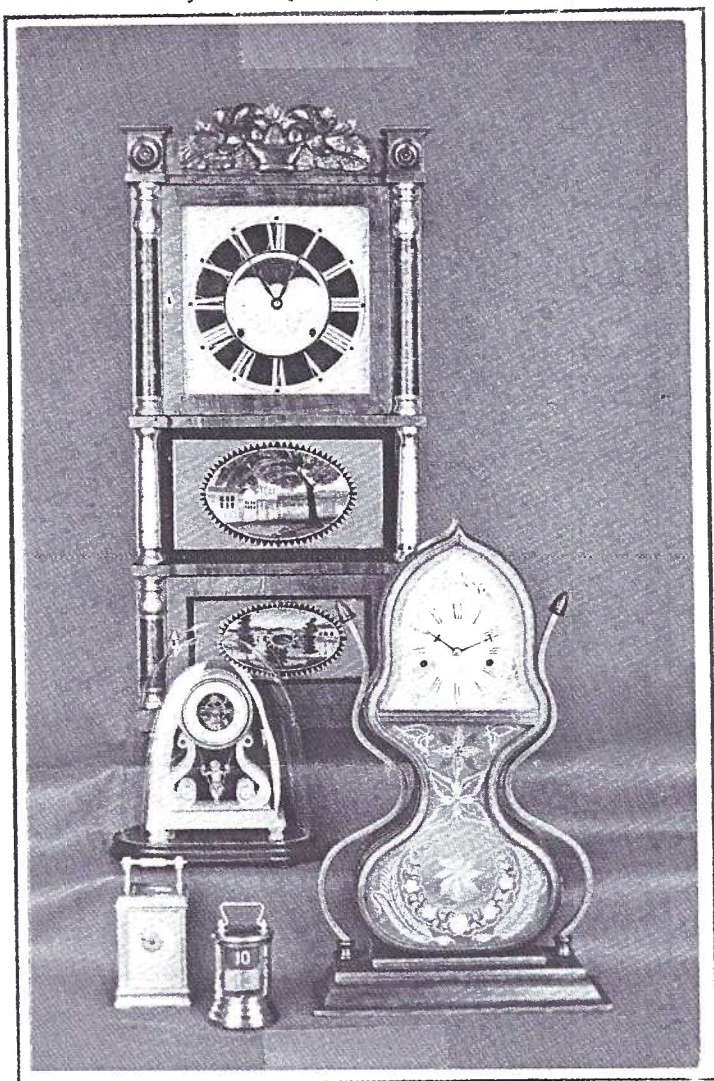
Walter Mowrer, 2000's President-elect, begins his term with the Annual Auction. Members may sell up to ten lots of postcards or related items. A form, which you complete with descriptions of the lots, can be obtained from Norman Zimmerman (354-5112) and must accompany the lots. *Bring the form and postcard lots to the Christmas Party.* The descriptions will then appear in the January **CARD** which you should bring to the Jan. meeting for perusal before the auction begins.

This is a good time to get rid of your duplicates and unwanted. It can be an excellent time to begin a new postcard theme or to add to your local view collection. Our volunteer Auction Committee collects 10% for the club's treasury. Payment is made the same evening. Sellers are asked to wait until purchases are paid for before collecting their receipts.

IN THE NEWS

A now-and-then column offering recent news stories as we know them on postcards.

A Lancaster Sunday News story (Oct.24) reminded us that the National Association of Watch and Clock Collectors has reopened its Clock and Watch Museum in Columbia,PA.after an expansion program that included extensive remodeling. Its curator,Michael Friedman (who has plenty of time on his hands and knows what to do with it) said, "of the 1,800 time pieces on display, only a fraction run on a given day...so they don't wear out". Earl Carver,an LCPC Past President and retired Methodist minister - a man who's always wound up and never runs down - is a museum guide. Earl collects time on cards (but not time cards) and delights in showing guests ancient water and fire clocks in the "origin of time" entry area,as well as rows of tall case clocks, carved cuckoos,railroad regulators and exotic Asians as well as tickle-your-fancy novelty timekeepers.



The Museum began in 1952 with Earl T. Strickler's timepiece collection which he housed in his Columbia home where he published the group's newsletter. The original building opened in 1971 to NAWCC members. In 1977 the public was invited. 1985 and 1996 saw additional expansion and today's edifice houses the group's administrative and editorial offices and research library in addition to its constantly growing collection. 35,000 members in 175 chapters have given it world

prominence. Visitors are welcomed seven days a week from 10 AM to 5 PM,Tues. to Sat., and noon to 4 PM on Sunday. There is an admission charge. For more info call 1-717-684-8261 or check its web site at www.nawcc.org.

Soon after it opened, local publisher, Marshall "Skip" Dussinger (Stel-Mar) published a set of four Koppel-printed cards.

WC-1, Koppel #158712 Old Time Shop

WC-2, Koppel #155713 (assortment of 5 clocks) **illus.**

WC-3, Koppel #157126 (colonial man w/clock on belly)

WC-4, Koppel #161180 (exterior view of bldg./curb clock)

IN THE NEWS

A now-and-then column offering recent news stories as we know them on postcards.

Britain's Queen Mother just turned 99, becoming the oldest British royal ever. The Queen Mum doesn't attribute her preservation to the glass or two of gin she imbibes each day, but at her age she does as she pleases. In case **THE CARD** misses her century birthday in 2000, we offer in 1999, a b/w Tuck "Real Photograph" in the Royal Portrait Series, #3975c. She proudly supports her baby, Princess Elizabeth, who was born in 1926 and is undoubtedly not yet a year old. Photo portrait is by Marcus Adams.



FROM A PORTRAIT
BY MARCUS ADAMS

H.M. THE QUEEN
WITH PRINCESS ELIZABETH



IN THE NEWS A now-and-then column offering recent news stories as we know them on postcards.

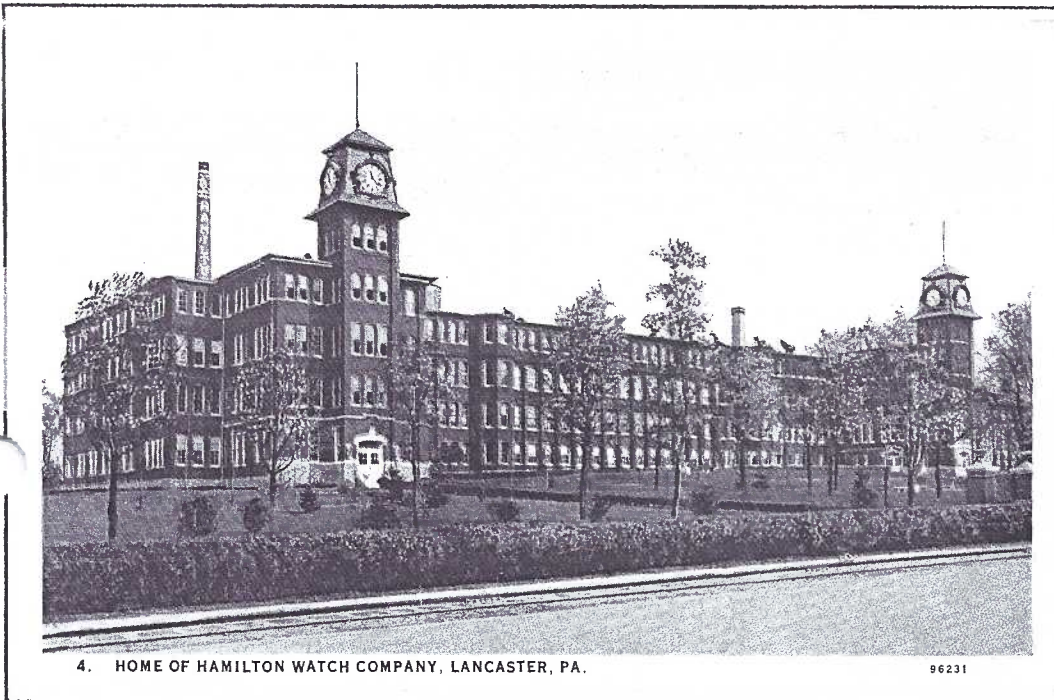
The Hamilton Watch Building became Clock Towers several years ago. A recent Sunday News article gives an updated report on this fine historic building. A Baltimore developer who specializes in converting old buildings and our Mayor Charlie Smithgall have enabled 42 of 78 potential units to become condominium-style low-maintenance living quarters at 917 Columbia Avenue. Uncle Charlie is pleased to report that "we have a lot of first-time buyers as well as empty nesters, young professionals, nurses, doctors and college professors from F&M and Millersville". The locale's fabulous. It lies mid colleges, hospitals and residential neighborhoods. In fact, the old Hamilton Watch Building was built along the

western edge of Lancaster for exactly that reason - within walking distance of most of its workers and their families.

John Ward Wilson Loose reminds us that the great expanse of lawn in the front yard was to keep the watch workmen far enough from the still dusty turnpike that passed its front door.

The original 1874 Adams & Perry building of one floor preceded the PC era, but with additional floors and expansion to the east and especially to the west, progress can be seen on the nearly two dozen postcards that have been cataloged to date. We show a Curt Teich card ordered from the firm Nov. 14, 1923.

ED.NOTE: Some months there's a plethora of *postcards in the news*. This is one of them! Comments welcomed.



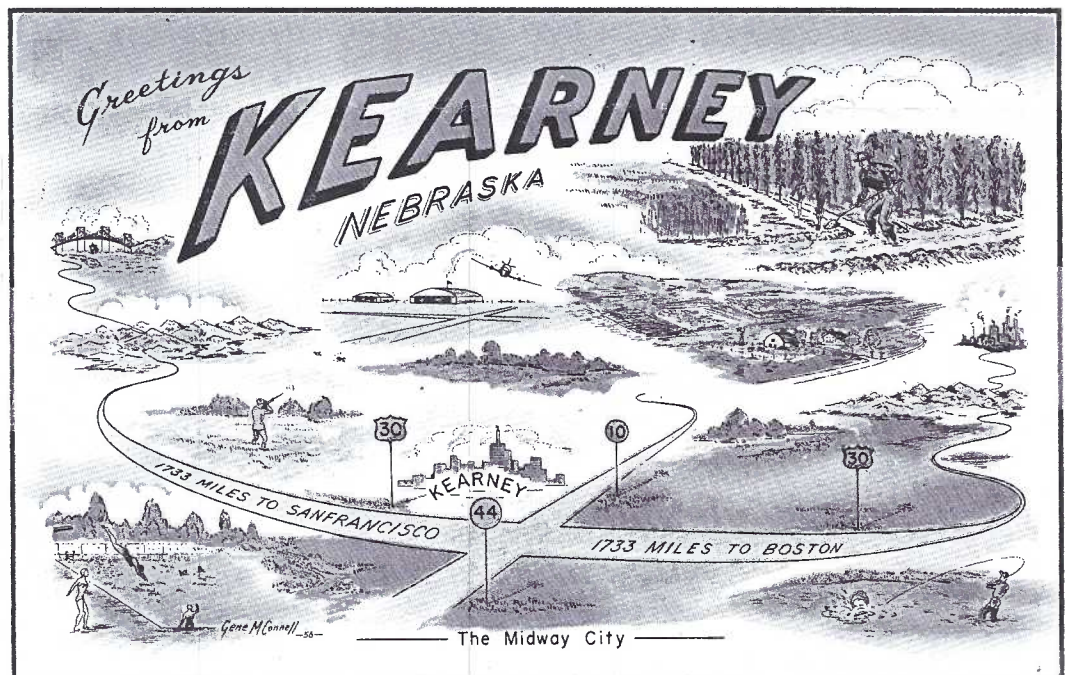
WHAT DO YOU KNOW?

...about (a set?) of four cards featuring the little man dressed in green from Lucky Charms cereal? Washington Crossing Card Collectors Club (WC4) received some from WC4 and LCPC member Kay Feight. Kay said the cards were given her school in sheets. Perforations plus a scissors are necessary to divide them into four quarters = continental size postcards. If you can offer any info to potential collectors, let **THE CARD** know what YOU know and it will share the info. Scenes show The Statue of Liberty, The Eiffel Tower, The Leaning Tower of Pisa and The Egyptian Pyramids.

NUTTY ABOUT MAPS

THE MIDWAY CITY of Kearney, Nebraska, is featured on this Plasti-chrome by Colourpicture Publishers, Inc. of Boston. It was distributed by Dunlap-Henline of North Platte, Neb.

Kearney, on US highway #30, chose San Francisco and Boston as terminals, locating it exactly 1733 miles from each. It claimed (in the 1960's when this card was sent) to "having probably the finest motels and restaurants of any city its size in the state". The writer's brief message - "We had dinner here in Kearney, Neb. (Aug. 28, 1960)



Merry Christmas

from the press of Ernest Nister.

The Nuremberg factory of E. Nister printed some of the finest quality postcards you'll ever collect. Earliest issues have undivided backs. Nister's London branch opened in 1888. Many of these cards survive to be treasured by discriminating collectors. Views exist, but it's their holidays and children that we Americans cherish. Three of their Christmas postcards are shown here.

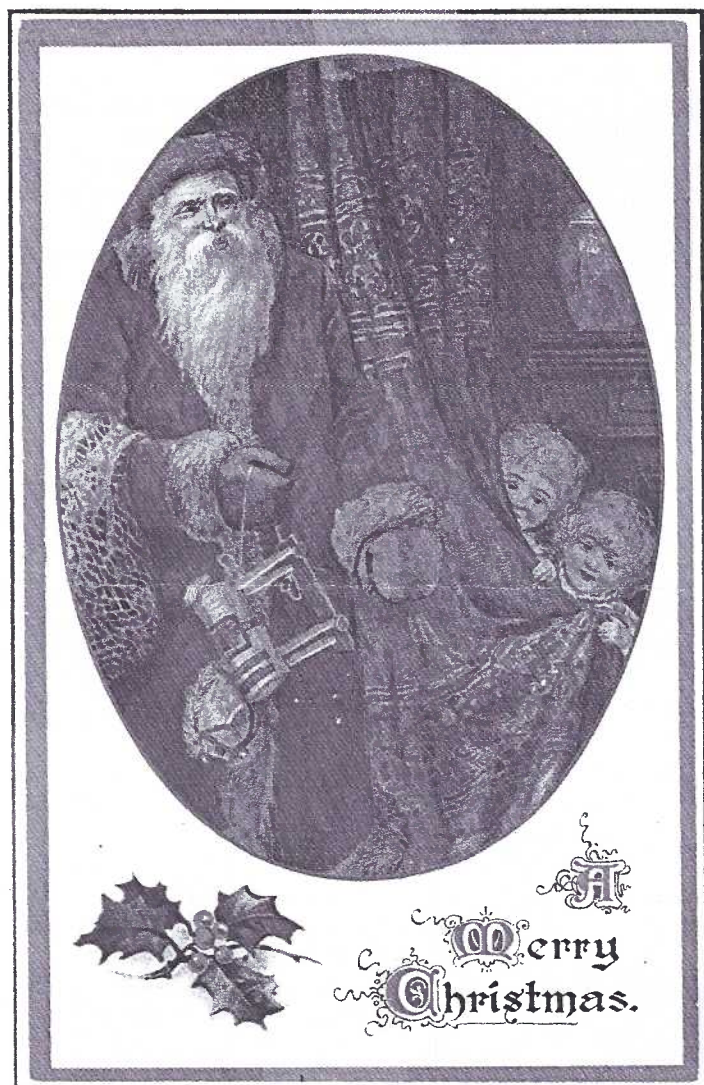
The color lithography is unsurpassed. If there's a downside to collecting Nisters, it's that you'll need a magnifier to keep a record of their individual numbers on the backs. But a simple 5x magnifier is a small price to pay for these beauties.

Christmas Caroling.

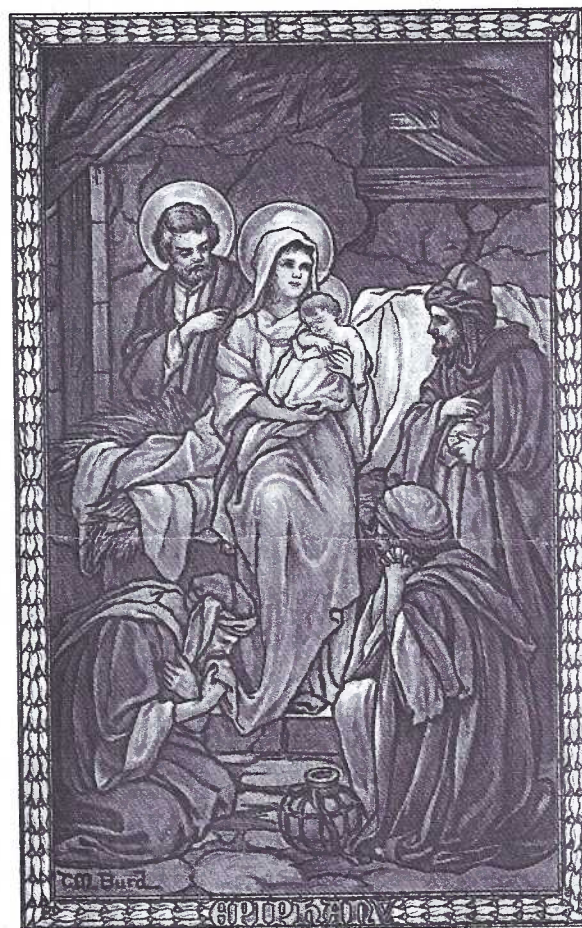


God
Bless ye
Master of
this house
Likewise
ye Mistress
too, & all ye
little children
that round
ye table go.

#2038. Albertine Randall Wheelan, the artist, renders a classic trio of medieval English carolers.



#2410. Father Christmas is spied upon as he brings toys into the parlor of a Victorian home. Unsigned.



May Christmas bring you Peace.

#2329. The Epiphany is illustrated in warm tones of golds, red and browns by Clara M. Burd. Clara is noted for her children on Rally Day and Sunday School postcards.

THE OTHER SIDE

Writers' messages that lend interest to the pictures on our postcards.

Many collections contain a postcard or two of relatives in a horse-drawn carriage. Aside from the family relationship, the views are of little importance to anyone else. These PCs however, have messages that shed light and a bit of humor on a by-gone era. The first two are not canceled.

(top) "This is the pony rig that Dorthea Musser got. This was taken the day that Leslie took it down to her. This is her first ride with the dearest little thing you ever saw so I had some (photos taken). I sent Rose and you one. Your father is improving every day. He has stopped his milk diet. He has beef steak and toast now. He lived two weeks on just milk and lime water. Mother."

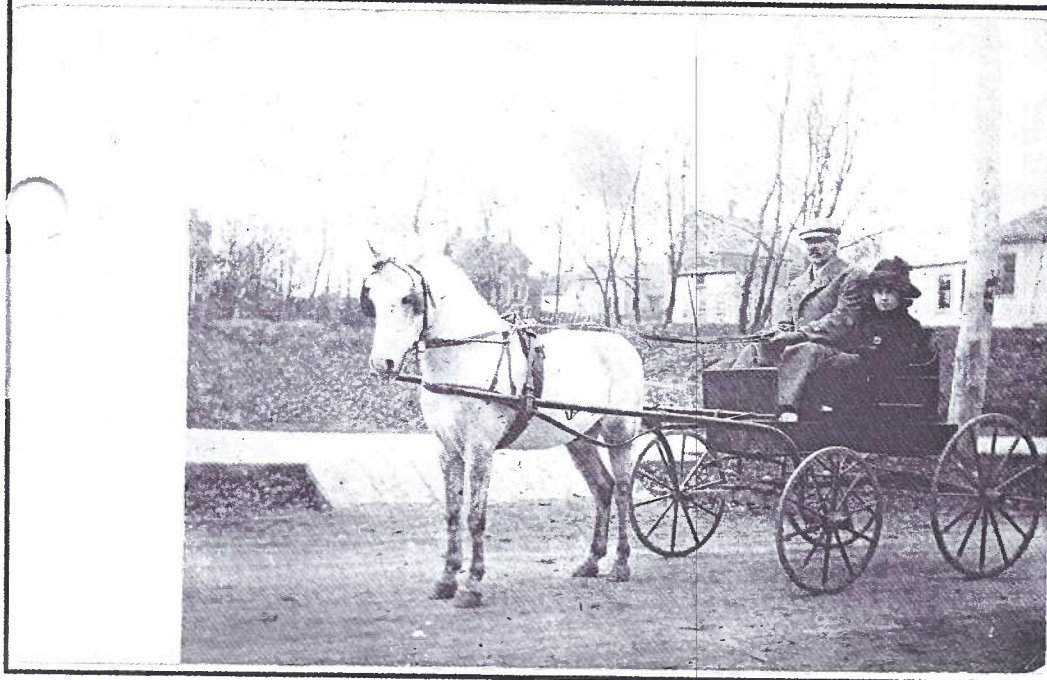
(middle) "This is Leslie. One day he started to town when it was muddy. The horse on this side had a cold about two weeks. She looks so poor on account of the way the sun shone on her. But they can travel some."

(bottom) Sent to Forksville, Sullivan County, Pa. on Nov. 14, 1907.

Dear Grandpa and Grandma,

I will send you this postcard for rat poison*. From Edna to both of you. Write soon.

*individuals often refer to their faces on real photo PCs as "bait for rats". If you have such a PC and would like it published, send it to **THE CARD** by March 15. It will be handled carefully and returned promptly.



Fewer than 20

copies of our club's book Windows to Our Past remain.

If you considered a copy of Windows as a Christmas gift or just as an "extra" for a future gift, now is the time to make that purchase. **Ray Dennis** has the remaining books and you'd do well to contact him today! Call in **area 717, 290-7948**.

Both of the local historical societies have been selling the book for \$40 plus Pa. sales tax since it went on sale. *It's a bargain at \$30 incl. Pa. sales tax.* A year or so from now, you'll be glad you made this decision in 1999!



IN THE NEWS A now-and-then column offering recent news stories as we know them on postcards.

As the November issue of **THE CARD** arrived in your mail, the Outdoors page of the New Era featured winter bird feeding. Local birders, **Shirley** and **Ray Bubb** and their backyard bird visitors were highlighted. They found that by including bird baths with drippers it wasn't long before the 40 species of birds that frequented their yard nearly doubled to 73. An all day Bird Feeding session at the North Museum was held Nov.6 to answer questions concerning backyard feeder stations.

Our postcard was published by Cape Shore Paper of S. Portland, Maine. It shows (from top to bottom) male and female redpolls, a pine siskin, a tufted titmouse and a white-winged crossbill. It was mailed from Silver Spring, MD, Nov.21, 1978. Don't forget to feed the birds this winter. Even if you don't add a bird bath, *try not to let your feed run out*. Your visitors have become accustomed to you for nourishment and weather can become harsh in only a few hours.

IMPORTANT BITS 'n PIECES

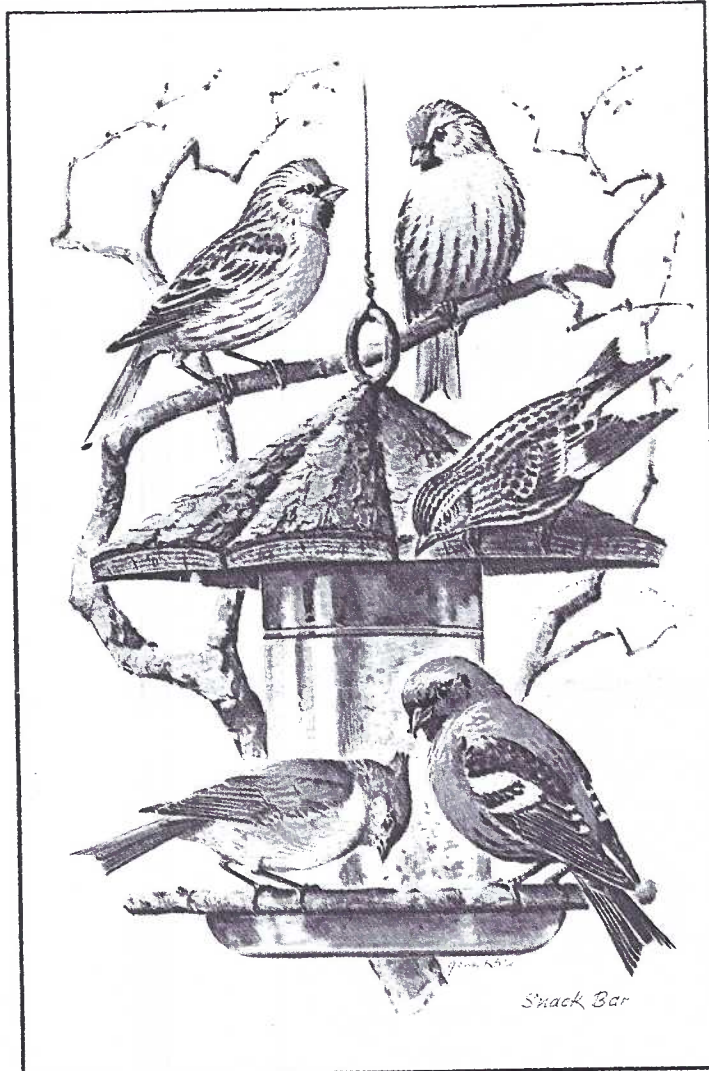
November's crowd helped sell 50/50 tickets to the tune of \$64. **Sam Nolt** (who attends once in a blue moon) was the lucky winner of \$32! Sam's a good guy, though. He'll be president of the Lanc. Red Rose Coin Club for the 4th time in 2000. A number of LCPC members belong to RRCC. While he enjoyed his \$32 moments of ecstasy, Sam offered to allow LCPC to use RRCC's large projection screen for the near future. We still thank **Herb Kauffman** for his research into a new screen and also thanks go to **John Long** for suggesting use of RRCC's screen which is stored right at the F&H Center.

Door prize winners were **Al Lutz** (10 postcard pages) and **Herb Kauffman** (100 postcard sleeves). See how quickly you're rewarded for your efforts, Herb? **Earl Carver** donated a huge bag of Hershey kisses which **Don Davis** won and immediately put into hiding!

Ray Dennis sold a few more copies of the club's book Windows to Our Past at the November meeting. If you want copies for Christmas presents or know someone who does, contact him at 290-7948 and arrange to pick them up now! The club has fewer than 20 copies remaining and Ray has them. (You may even have a glimpse of Carol's glorious Christmas decorations which have become renowned throughout their neighborhood.)

Ray, Brian Frankhouser and **Ellen Depuy** (Harold and Ruth Moyer's daughter) helped **Jim Ward** select a new computer, scanner and printer as well as a copy machine. The purchases were made from the accumulated receipts from sales of our book. We hope all LCPC members will benefit from improvement in the club's publication, **THE CARD**.

The equipment is housed at Jim's home and is available, on request, for use by LCPC members. Jim's copy machine will be sold this year (see description) and receipts for it will be returned to the club. In 60 to 90 days Jim's Macintosh Performa 6360 computer and Epsom Stylus 500 color printer will also be made available for sale to any LCPC member. Again, receipts will go back to the club. A complete description of the Mac and Epsom will follow in January or February's **CARD**. If you want advance info., contact Jim at 721-9273.



Copy Machine

For sale to LCPC members.

This copy machine was bought by your editor in Feb. 1992 for \$1995.00 from Colony Products, Inc. 799 Flory Mill Rd., Lancaster. It has been serviced regularly by that firm. Although in good working order, you may wish to replace the drum unit (\$185) in the near future.

Specs of Canon Desktop Copier #NP1020

Dry electrostatic transfer (uses black toner cartridge*)
Accepts sheets, books, 3-dimensional objects to 4.4 lbs.
Maximum original size - 8 1/2" x 14" (legal size).
Reduces to 70%, enlarges to 122%. Any size between these extremes can be manually selected.

Accepts card stock. *Excellent for making postcards.*

Warm-up time - 30 seconds.

Copy speed - 10 letter-size per minute; 9 legal per min.

Multiple copies to 99.

Automatic or manual feed.

Dimensions - 20" wide, 18 1/2" deep, 11 3/8" high.

Weight - 53.9 lbs. (Should set on substantial table.)

* toner cartridges are \$39.99 pkg. of two at Staples.

Offers by LCPC members accepted to December meeting (12/20/99). Money realized from this sale will go to the club as I promised at an earlier meeting. High bidder will make check payable to LCPC.





This early chromolithograph card was published by Regel and Krug of Leipzig, Germany. It features a Christmas Angel and St. Nick in a brown robe. It was mailed from Oberndorf to Hannover Dec. 19, 1905.

In Sympathy

We've just learned that charter member **Elizabeth Graver's** daughter passed away on October 24. We extend our sympathy to Elizabeth as well as to **Mary Ann Sherer, Jean Frank and Jim Ward.** Their stepmother passed away on October 11.

America's First Postcards

A set of ten unused color picture postcards (actually printed on government postal cards) was issued for The World's Columbian Exposition in 1893 by Charles W. Goldsmith, official agent for the United States. The cards generally sell for \$17.50 or more *each* in unused condition. The unused set I'm offering for sale includes the scarce paper sleeve in which the set was wrapped. Also included in the price is an unused postcard offered at its booth by Puck magazine, a leading American humor publication at the turn of the century. The Puck card alone is valued at \$150 in Fred Megson's price guide and catalog American Exposition Postcards (see LCPC library). I'm offering **all 12 items for just \$200.** I have only the one set. Contact Jim Ward, 717-721-9273.

Shown to the right is the scarce paper wrapper for the set of ten postcards, reduced here 40%.

MONTHLY EXHIBITS

Nine members exhibited to a full house in November. There were 76 present including a few visitors (one of whom became a member). In addition, ten members* had tables with postcards for sale - another mini-show! Response was obviously for the well publicized and oft-postponed program (which see).

President Susan Glass took a poll of veterans in the audience and there was a remarkably large number from World War II and the Korean War as well as several who served in Vietnam. Susan, herself, an active National Guardsman (as well as hospital nurse), served in the Desert Storm campaign. We are most thankful for the life these vets have fought to preserve for us.

Servicemen and Servicewomen was the theme for November's boards.

SUSAN GLASS FIRST Women Served Too
RUTH LINES SECOND Celebrating 50 Years of Victory
HAROLD MOYER THIRD Special Training
HONORABLE MENTIONS

EARL CARVER Our Defenders
BOB KRAMER Our Italian Allies -1918
RUTH MOYER Behind Every Successful Man...
JIM WARD Postcards Helped Our Veterans

December's board theme is *Christmas*.

* Set-ups were by Bill Buckwalter, Gordon McKinzie, Mike and Bill Middleton, Gerald Hostetter, Bob Kramer, Ruth and Harold Moyer, Dick Bishop, Norman Zimmerman, Howard Steinberg and Jim Ward.

NEW MEMBERS

#555 Robert Hurwitz 4906 Crestwood Ln., Syracuse, NY 13215-1315. Ph. 1-315-468-4281. Hupmobile automobiles in any form: real photo PCs, dealerships, advertising, Pasha cards, Calvert Litho. Co., 1923 factory issued series. All years, 1909-1941. Also contact thru E-mail: mrhupp @ twcnv.rr.com.

Bob has been a subscriber to The Postcard Album. I include a copy of **THE CARD** with each subscriber's Album and Bob responded by joining us! Now he enjoys the best of two worlds! Ain't Life Grand?

#556 Ken Whiteside 853 Willow Rd., Lancaster, PA 17601. Ph. 394-3902. Ken's a familiar face to many of us who set up at local flea markets. He likes leather PCs, most Lancaster County views, esp. Rocky Springs (he joined at our Nov. meeting) and Santa Claus on PCs.

LCPC active membership presently stands at 320.





*Christmas Greetings
from Winfield.*



Christmas Greetings

Copyright 1967 by H. T. Robbins, Boston.

This trio concludes our Christmas essay. Top left shows the English Father Christmas on an *Oilette* from Series I by Raphael Tuck & Sons. The upper right card is also a Tuck Oilette but is labeled as *Christmas Postcard #1822*. It was mailed Dec.22,1906.

The final card also depicts a grand Santa - one any of us would be happy to claim as his grandfather. It was published by Robbins of Boston, Mass. and Germany and with a bit of professional touching up, appears to be a mirror image of Tuck's #1822.

Don't forget our Christmas Party on the 20th - there'll be loads of room for your whole family and friends!...the entire F&H Center auditorium. Another reminder - LCPC member **Jim Morrison's National Christmas Center** - east of Paradise in Vintage, PA. Aside from the fanciful Tudor Towne, you'll find many new and exciting Christmas displays and exhibits!

And so the staff of **THE CARD** concludes this 10th year for LCPC by wishing all members and their families and friends **A Very Merry Christmas and a Happy New Year!**

