



2000 – A Rare Leap Year

We all know Leap Years come every four years. We know, too, that you can be sure it's a leap year if you can divide the number by four. If you have a collection of Leap Year postcards, more than likely most of them, if they're dated or were mailed, are 1908. Some cards may be dated 1912, even fewer are dated 1904, scarcer even will be 1916 or 1920. The simple fact is, that 1908 was one of the most prolific years for PCs in the USA. Before that leap year and after that leap year – not so. You'll find NO leap years cards dated 1900 because, even though it was an even year and divisible by four, it just wasn't a leap year!

What! Why? Read on.

The current formula for leap years comes from the Gregorian calendar dating back to 1582. Previously, under the Julian calendar, every fourth year was a leap year. However, as decades flew by, a small discrepancy occurred between the approximation of the length of the solar year, 365.25 days, and the actual length of

the year, 365.2421 days. Over time, the calendar no longer matched the seasons – notice how the winters are warmer?

To solve this problem, Pope Gregory instituted a new rule for leap years: *every fourth year would be a leap year EXCEPT century years, those ending in 00. Those would be leap years ONLY if divisible by 400.* Since 1900 was not divisible by 400 and 2000 is divisible by 400, they didn't have one – but we do!

Now there's a bit of thousand year trivia that could win you a bet – so long as it's not another **CARD** reader with whom you're betting.

Interestingly, three of the six cards shown were mailed to females and three to males (one was to a young lad from his aunt). A census of our Leap Year cards with names of receivers show that 45 were sent to females and 25 to males. This supports the theory that girls and ladies engaged in holiday postcard mailings more often than gents and we, in fact, find that many of the female recipients' cards were even mailed from females, no doubt friendly tormentors!



Our Leap Year cards are by the Illustrated Post Card Co. and feature subjects that were popular in 1908 when the set was issued.

They include –

- Leap Year on the Farm
- Leap Year in Coon Town
- Leap Year in De Bowery
- Leap Year in the Far West
- Leap Year in the 400
- Leap Year on the Rialto



If in doubt about our monthly meeting you may call the following persons. Kindly pass information on to other members.

- | | |
|-------|----------------------------|
| CITY | Jacob and Pauline Fisher |
| | 285-5092 |
| EAST | Norman and Ethel Zimmerman |
| | 354-5112 |
| WEST | Walter and Barabra Mowrer |
| | 684-5331 |
| NORTH | Harold and Ruth Moyer |
| | 336-6644 |
| SOUTH | Howard and Anne Steinberg |
| | 786-2362 |



Key to 10th Anniversary Quilt Cover

Read by columns, starting in upper left.

Column 1

Kinzers - Lengacher Cheese House
Christmas holiday postcard
Drumore - Shudy's Diner & Rainbow Park
Fulton House - 1909 Hudson/Fulton Celebration
Lancaster - Wildcat at Rocky Springs
Lanc. - Patriot Daughters/Lanc. Fencibles Ceremony
New Year holiday postcard
Millersville - State Teachers College
Lancaster - Rockford, Home of Gen. Edw. Hand

Column 2

July Fourth holiday postcard
Lancaster - J.B. Van Sciver Furniture Store
Lititz - P & R Depot and Ideal Chocolate Factory
Lancaster - Raub Supply Co. Showroom
Brownstown - Hand Loom and Country Store (mill)
Lincoln's Birthday holiday postcard
April Fool holiday postcard
Landis Valley - Conestoga Wagon Demonstration
Marietta - Gay Street

Column 3

Silver Spring - Nolt's Ponds
Mount Joy - Market Street and Post Office
Hallowe'en holiday postcard
St. Patrick's Day holiday postcard
Quarryville - Ponderosa Museum
Oregon - Pinetown Covered Bridge
Strasburg - Eagle Americana Museum
Labor Day holiday postcard
Washington's Birthday holiday postcard

Column 4

Thanksgiving holiday postcard
Willows Covered Bridge (publ. By LCPC, 1990)
Terre Hill - Trinity Evangelical Congregational Ch.
Columbia - Multiple Arch Concrete Bridge
Fishing Creek - Susquehanna State Park
Easter holiday postcard
Valentine Day holiday postcard
Pequea - River View Hotel
Lancaster - N. Queen Street

With these 36 subjects we trust we've achieved our purpose -

- 1) offer a panorama of Lancaster County
- 2) include all eras of postcard publishing
- 3) include holidays for "non-view" collectors
- 4) offer as much color as possible*

Congratulations, LCPC, on completion of ten wonderful years. You've accomplished much, had fun doing it and made many new friends along the way.

SYMPATHY

We've learned that other members have lost loved ones. Our sincere sympathy is extended to **Lewis Bechtold** on the loss of his mother in December. She was also **Veronica's** grandmother. Also, we learned that **Emily Keebler's** mother passed away in October.

Should you hear about or read of similar losses to members, please inform **THE CARD** staff so a notice can be published.

IN THE NEWS *A now-and-then column offering recent news stories as we know them on postcards.*

Y2K countdown problems around Lancaster County were the subject of a December series in the Lancaster New Era. Most local dairy farmers had no reason to expect problems.

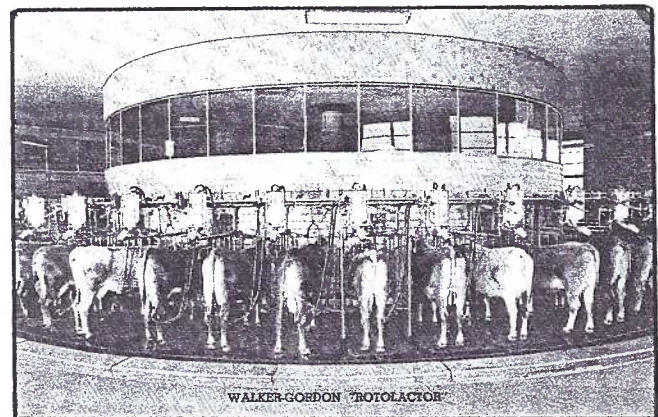
Kreider Farms, a multimillion dollar enterprise, also expected no problems. It had expenditures of \$100,000 when it up-graded egg production houses. Its million dollar milking system handles 1,500 cows three times a day. Each bovine wears a computer chip on her ankle (remember the ankle bracelets the 2-legged girls wore one time?)

Your editor's attention was attracted to a picture of Kreider Farms' revolving carousel that milks 54 cows at one time.

The Walker-Gordon "Rotolactor", shown, is on black and white Curt Teich postcard #2C-344. According to C-T's records, this card was in produced in 1952. They ran #2C1 to #2C564 that year.

The Rotolactor (reverse description) "is a revolving platform that cleans, washes and milks 50 cows in 10 minutes." Plainsboro NJ appears to be the home of the '50s phenomenon. Visitors were welcome. Was it the company's first carousel?

Then along comes Harold Moyer, our farm-raised member from Upper Blainsport. Harold has the



same Rotolactor on a PC by Art Photo Greeting Co. of Elizabeth, NJ - same machine but a different set of Elsie and a *Princeton, NJ* postmark of Nov. 1, 1937!

In 62 years, the major change, then, is the computer chip. Pres. Ron Kreider says the chip is scanned as Elsie enters her carousel. A quick scan tells them 1) how much milk she gives, 2) how long it takes to milk her and 3) her activity level (when she's ready for breeding).

I know what you're thinking Jack Brubaker, "but the girls aren't even given a chance to kick the brass ring"!

Ed. Note - The royal mistake of identifying Q. Mary as Q. Elizabeth in the Dec. issue will be corrected with postcard IDs when the Queen Mum's 100th birthday anniversary comes along this year.

SYMPATHY

Member #454, **Mary Hartman**, our dealer friend from Bloomsburg, PA, passed away recently. We extend our sympathy to Mary's husband **Reuel**, member #489. We're also saddened to hear of the death of **Rosalie Corliss's** mother.

CHRISTMAS PARTY

Following the invocation by Rev. Richard Bishop, 85 members and guests enjoyed a wonderful covered dish dinner supplementing the ham and turkey and beverages supplied by LCPC through the tireless efforts of our Kitchen Committee, Ruth and Harold Moyer who were assisted by their two grandsons.

Beautiful poinsettias supplied by the club with Christmas cards added by Jere Greider along with holiday stand-up cutouts by Bud Heim completed the array of door prizes.

Dede Schaeffer, as announced in November, offered a spectacular conclusion to the festive evening with nearly 100 scarce Christmas and Santa postcards from Daisy's collection. They were followed by Dede's descriptive contributions of her assembly of Christmas items incl. holiday customs of different countries as shown on PCs along with the early art of the Louis Prang studio. As she always does, Dede went the extra mile with a grand exhibit of the actual Christmas items on two large table displays. We thank both of these ladies for their generous contributions to our holiday meeting.

Twixt this food and fun President Susan Glass thanked the members for helping make her year considerably easier. Mary Darrenkamp's Nominating Committee efforts resulted in the following slate which was quickly voted into office. As you can see, we're still looking for a vice-president.

Elected Officers for 2000

Walter Mowrer, President

Mary Ann Guntow, Secretary

Barabra Mowrer, Treasurer

Directors for 1999-2000

Ruth Moyer, Harold Moyer, Norman Zimmerman

Directors for 2000-2001

Bill Buckwalter, Jacob Fisher, Brian Frankhouser

Board Meeting in January

Newly elected president Walter Mowrer will convene a board meeting of his officers and directors at 6:30 PM, one half hour before the January meeting begins.

Windows to Our Past - sold out!

Ray Dennis announced that the remaining handful of the club's hardcover book Windows to Our Past was sold out before the Dec. meeting concluded. We know of a few members who had purchased multiple copies. At this point they don't care to part with them for less than \$45. Carolyn Wenger at the Lanc. Mennonite Historical Society reports their copies are sold out. There are nine copies remaining (12/23/99) at the Lancaster County Historical Society for \$40 plus tax.

PHS FINDS NEW EDITOR

LCPC member John McClintock of Manassas, VA has turned over his position as editor and publisher of the Postcard History Society to Jim Ward, editor of The Card. Change of ownership of the quarterly publication was planned by the two men for March 2000 but in a surprise move, John asked Jim to take over with the December issue which was in the hands of the readers by Dec. 15, 1999. The 12-page

publication has national distribution. Subscriptions are \$6 for four issues. While the supplies lasts, you can request a sample of Vol. 14, No. 4 (Dec.'99) by writing to Jim at 1795 Kleinfeltersville Rd., Stevens, PA. 17578-9669. Please enclose \$1 to cover partial printing cost and postage. Make checks to Jim Ward.

MONTHLY EXHIBITS

With the expanded meeting area, our large 8' x 12' exhibit casel looked like a palette in a giant painter's studio. But it over flowed with colors of Christmas. We thank these members for taking time in their busy holiday schedules to assemble boards.

WALTER MOWRER **FIRST** Christmas Greetings
HAROLD MOYER **SECOND** Santa's Modes of Transportation

RUTH MOYER **THIRD** Santa and His Pipe
HONORABLE MENTIONS

BOB KRAMER Christmas from International Art
EARL CARVER Christmas Views
JIM WARD Miniaturkorte God Jul

Jim also has a non-competitive display of Christmas novelty postcards - too complicated to mount on a vertical surface.

Exhibit themes for the next few months:

Jan. board - Potpourri (your choice)

Feb. board - Letter "F" *

Mar. board - Spring Time

Apr. single card - National Parks

*fables, fade-aways, fairies, fairy tales, fairs, fancy, fantasy, farmers, farming, ferry boats, fine art, fish, fishing, flags, floral clocks, flowers, foolish questions, football, Fords, foreign, fraternal, free cards to name a few.

LITITZ TINWARE

ACCEPTED FOR WHITE HOUSE TREE

LCPC member Bill Buckwalter had his tin ware ornaments accepted to hang on the 1999 White House Christmas Tree. Bill, with the help of his wife Becky, is a professional tinsmith whose work appears in many shops throughout the USA. They sell their ideas and tinware through their own wholesale catalog. We're proud of their recent accomplishment.

TEN YEAR TRADITION

We always look forward to a birthday cake at our January meeting, a brief repast between the business session and the auction. All are welcome!

SWEET POTATO DELIGHT

Recipe requested of Betty Beck at Christmas Party

| Sweet potatoes: | Topping: |
|------------------------------|---------------------|
| 3 cups mashed sweet potatoes | 1 cup brown sugar |
| 1/3 cup sugar | 1/3 cup flour |
| 2 eggs | 1/3 cup soft butter |
| 1 tsp. Vanilla | 3/4 cup pecans |
| 1/2 cup milk | |
| 1/2 cup melted butter | |

- 1) combine swt.pot. ingredients at slow speed
 - 2) after combine, beat 1-2 mins. at med. speed
 - 3) at low mixer speed, combine topping ingredients until crumbly
 - 4) crumble topping mixture over pot. mixture
 - 5) bake at 350° for 30 minutes
- Makes serving for 6 to 8.

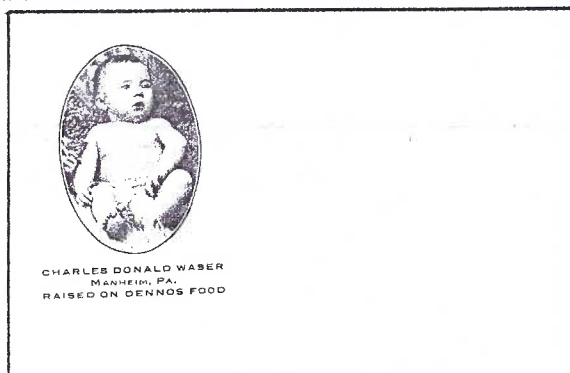
LOCAL NEW YEAR BABIES

Well...Local Babies

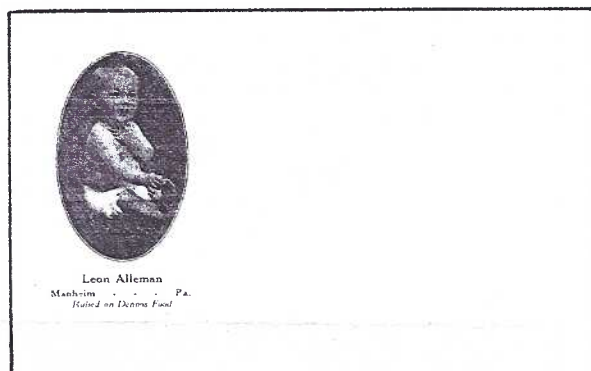
Looking for New Year babies for a January issue, most editors would naturally go to their New Year cards, then a sub-heading Father Time/New Year Baby, etc. but a few weeks ago while looking for something else (it's happened to you I'm sure) I came across three undivided postcards in my collection, nestled away under Manheim, PA for many years.

What better time to share them and have them be our unique, local *New Year Babies for 2000!*

The next step was to call the man who knows as many people in NW Lancaster County as Dot Fry knows in the NC and NE areas. **Harold Galebach** is always a willing investigator and my phone description whetted his detective appetite. No less than a week later he sent me the following information.



Charles Donald Waser lived on the west side of South Charlotte St. in Manheim. His father, Amos, was a dealer in ducks, pigeons, rabbits, etc. Charles Donald was a minister. He died just last year at Pleasant View where he was a chaplain.

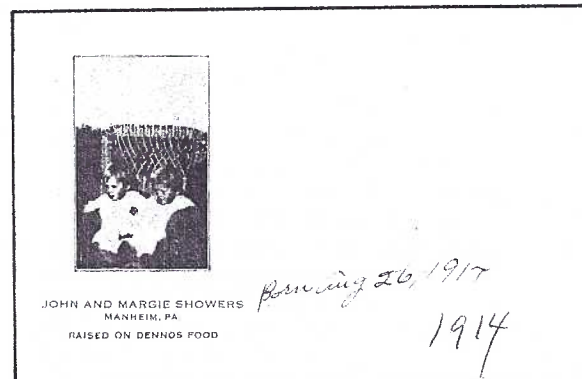


Leon Alleman lived on Route #72 north of the borough, not far from Henley's Church. He also died about a year ago.

AILING BUT IMPROVING

We've learned that **Jim Keebler** had a throat cyst successfully removed in November. He and **Em** will do their best to get to meetings after the holiday season. We wish Jim a speedy recovery.

Also, we were misinformed as to the seriousness of **Peg Hanna's** fall just prior to the November meeting. Peg suffered a broken pelvis and broken thumb. At 91, she's recuperating slowly and welcomes your visit or postcards: Zion Home, 722 Furnace Hills Pike, Lititz. At this writing (12/17/99) she's in the nursing wing but expects to be in her apartment (same address) soon. Get, well, Dussie, we miss you!



John and Margie Showers were twins. The penned notation "born Aug. 26, 1914" on their postcard has been confirmed. Neither ever married. Margie and her sister, Laura Snyder live at Pleasant View Retirement Community now. John died about a year ago.

The mystery surrounding these three postcards concerns the famous(?) Dennis Food. No one Harold has contacted in or around Manheim can help. CAN YOU? And there's a moral to this story – don't procrastinate in making interviews...not that the boys who are gone would have remembered Dennis, but then...

CARD CONTRIBUTORS

Editor Presents Annual Awards

At the December Christmas Party Meeting, **CARD** editor **Jim Ward** presented his annual Rewards of Merit to fifteen LCPC members who contributed to another successful year for **THE CARD**. He reminded the membership that without the efforts and talents of many members, our monthly publication would lack the flavor and diversification it has.

Members and their contributions:

Ray Bubb – Yellow Breeches, new member of PA's Scenic River System

Shirley Bubb – proof reading owl postcard data

Carol Dennis – information re Grace Lutheran Church anniversary and loan of pen and ink drawings of Rocky Springs carousel

Brian Frankhouser – loan of Musselman Air Service card in Eden airplane accident

Dot Fry – info. for Furnace Hills Girl Scout Camp and latch key information

Harold Galebach – Pocono publisher Al Koster story from *Pennsylvania* magazine

Anna Groff – family info. on Gap, PA postcards

Newlin Groff – identification of Big Maple Farms

Bernie Heisey – loan of Clearview Diner card

Gerald Hostetter – Tecraft Co. publisher checklist; Mt. Joy Bulletin articles re early air shows in Lancaster County; help in compiling info for checklist of local souvenir PC folders

Russ Holmes – up-dated info and IDs on real photo postcards of PA covered bridges

Harold Moyer – Schoeneck pig roast card

Jim Rudisill – Article: Philip Boileau, Painter of Fair Women

Anne Steinberg – IDs of members of the Blue Stone Ramblers band on a DBL published card

Fred Yohe – his published postcards showing historical York and many featuring cats

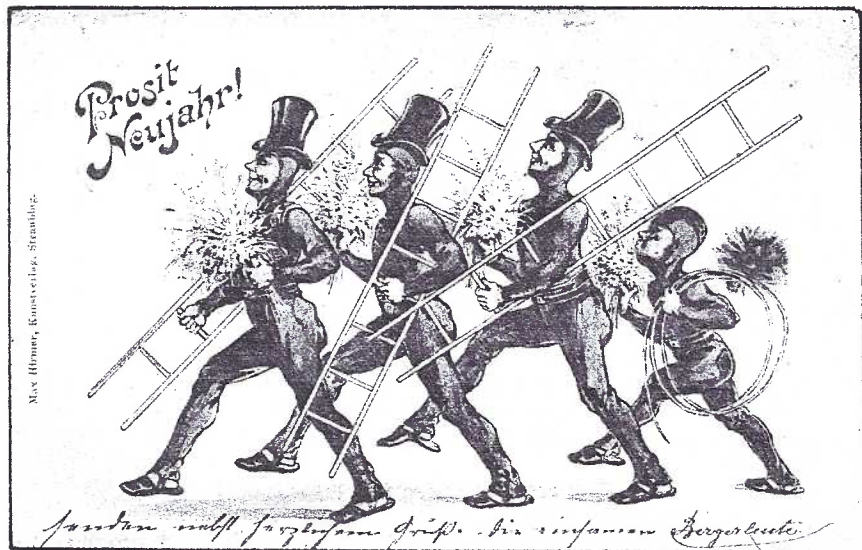
A very sincere Thank You from our club's readers to these contributors.

CHIMNEY SWEEPS –

Few Changes in 70 Years

When I began collecting chimney sweep postcards about seven years ago, one dealer admitted her stock “wasn’t heavy on sweeps, you see, I collect them too – but only the real old ones”. This novice sweeper then felt he too should look for just ‘the old ones’. Like most collectors, though, either supply or price will cause you to alter your original collecting goals. In this case (I’ll admit I have my \$ max) it was finding more and different chimney sweeps that encouraged me to look beyond ‘the old ones’.

As you can see from these examples, every decade since the golden age (c.1903-1913) produced attractive chimney sweeps, admittedly they’re a bit tougher to find, but they’re reasonably and offer equally delightful images.



The little chimney sweep in our third card takes a well-deserved recess from his work and cavorts with his pig and little girl friend. He carries his ladder, the ever present long wired brush, (note his slippers) and, in addition, a bottle of champagne! The Czech greeting *Stastny novy rok!* must surely mean Greetings for the New Year! Cancellation on Dec.31,1921 is from Kostelec nad Orlici, a small town SE of Prague. Card #2861 by publisher L&P.

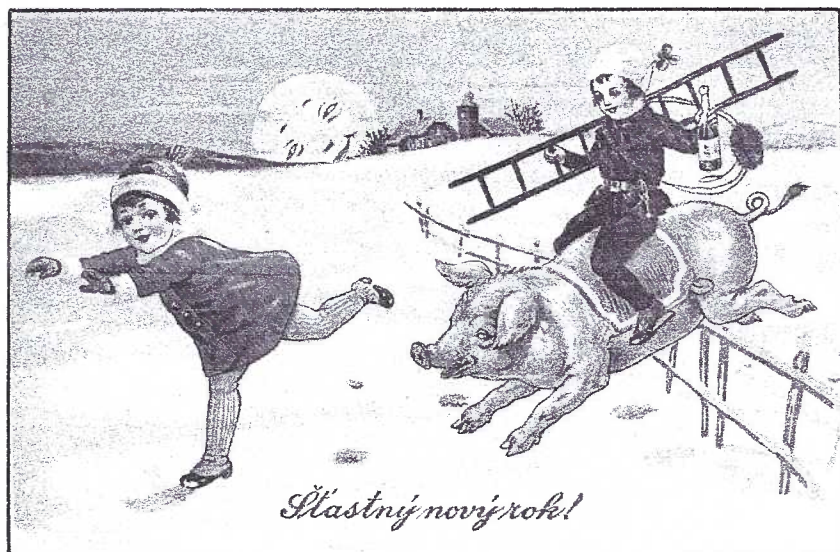
For our fourth chimney sweep we move to Antwerp, Belgium. The Dec.30,1939 card features another cute couple. While she has a handful of lucky four-leaf clovers to offer him, our poor sweep has only his greeting *Bonne Annee* – Happy (New) Year for her. The wide white border, soft pastels and soft textured paper stock typify postcards of the 1930s. RB is the publisher. #24010-2 was printed in Belgium.

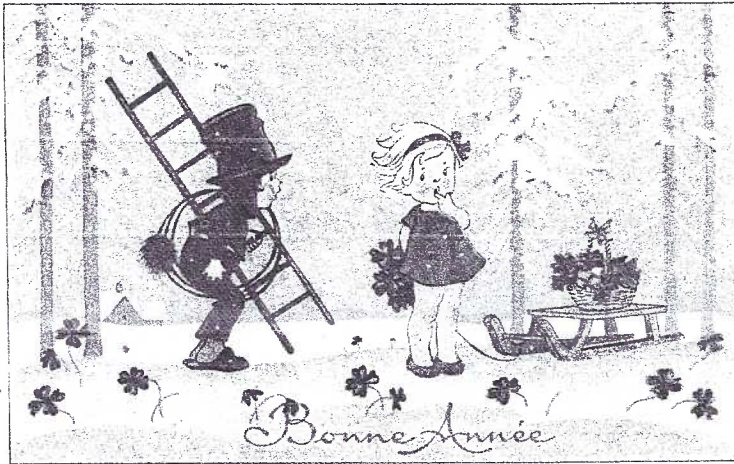
Back to Austria for sweep #5 on a silhouette designed by Josefina Allmayer and published by Wagner in Vienna. The 12/28/48 cancellation belies the penned 1949 on the front. Again we find our chimney sweep accompanied by the New Years

Prosit Neujahr! New Year Cheers! Is proclaimed by the trio and their tag-a-long tike on the u/b card cancelled in the little Silesian village of Karlsthal on Dec.31,1901. It arrived in Vienna, Jan.1,1902. The top hat, a status symbol, gave the dirty/lowly occupation a little class. It never saw the inside of the chimney. The little boy’s tight cap, on the other hand, was more utilitarian in the narrow confines of chimneys of central Europe.

Ladders (some appear quite short) played an important role. Most homes had skylights through which the sweeps emerged. They laid their ladders against the high-pitched roof and ascended to the chimney top. We can see why sweeps often appear in soft shoes or slippers – what better way to grasp the rungs of those sloping ladders?

Die besten Glückwünsche zum neuen Jahre – The best Good Wishes for the New Year are the sentiments of the cute kid teasing his lazy good luck pig on the second card. It’s cancelled Dec.31,1910 at Vocklamarkt, Austria (now Volckermarkt?). PP is the only publisher ID.





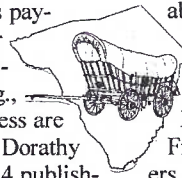
Our final two cards are both continentals, reduced here to 60%. No magnifier was needed to read the cancellation date on chimney sweep #5. In fact, it's the only unused card in our story. Aside from his motor scooter, the sweep is much like his counterparts from earlier decades with his Happy (New Year) greeting, wire brush and top hat. The black and white card is by A.F.Goth of Vienna.

The sixth card (also a continental) was mailed from 'S Hertogenbosch, a city in southeast Netherlands on Dec.28,1960 to Handy,VA.,USA. Once more we have an unidentified publisher, "S". The card is #991. Two cheering children watch as a smiling sweep and his lucky pigs race by to his next job.

I wonder if that dealer who "collects only old chimney sweep cards" knows what she's missing?

THE CARD is the monthly publication of the Lancaster County Postcard Club which meets the third Monday of each month at 6 PM in the Farm & Home Center, Routes #30 and #72, Lancaster, Pennsylvania.

Yearly membership is \$8 (\$2 extra for each member at the same address). Membership year is April 1 to March 31. Make checks payable to LCPC c/o Dorothy Fry, 117 Farm Crest Drive, Ephrata, PA 17522. Change of address and all other correspondence should go to LCPC c/o Jim Ward, editor, 1795 Kleinfeltersville Rd., Stevens, PA 17578-9669. Phone 717-721-9273. Advertisements are \$15 for a full page, \$8 for 1/2 pg., \$5 for 1/4 pg., \$2 for a business card. All ads must be pre-paid with copy 30 days before publication. Ads of 25 words or less are FREE to members but please submit ad for each issue 30 days in advance. THE CARD staff includes Dorothy Fry and Gerald Hostetter. Mailing committee is Harold and Ruth Moyer. Recent circulation: 12 clubs, 4 publishers, 235 homes, more than 315 members.



LCPC AUCTION #29

Monday, January 17, 2000

u=used, un=unused

c=chromes, cc=continental chromes,

l=linens, wb=white borders,

u/b=undivided back, d/b=divided back;

RP = real photos

All lots are postcards unless noted.

Descriptions are sellers.

Examine all lots carefully.

- 1 150+ churches, more than half PA
- 2 90+ assorted ub, c
- 3 100+ assorted ub, c
- 4 50+ assorted PA u/un, un, c
- 5 50+ assorted PA u/un, ub, c
- 6 10 diff. Loyal Order of Moose, Moosehart, IN
- 7 17 diff. Christian Science Church u/un, wb, c
- 8 8 diff. Women, some movie stars u, un, db/c
- 9 50+ Real photos, many "instant family"
- 10 20 diff. PA. Academy of Fine Arts un, db

- 11 1896 Lancaster Schools certificate
- 12 Paper Back Price Guide #2, 1982
- 13 2 Lancaster City cabinet photos
- 14 Jacob Weaver, thresher repairs, Strasburg, non-PC
- 15 1908 Wickersham Grammer Sch., Conoy Twp.
Souvenir booklet
- 16 3 Lancaster PCs: views and advert.
- 17 4 Canceled: Bareville, Safe Harbor, Churchtown,
Smithfield, PA
- 18 RP - MSTC science building and lake
- 19 5 Roadside incl. shoe house, Grand View ship hotel
- 20 3 Pres. - Nixon, Ford, Carter

- 21 5 Hershey no border linens, un
- 22 6 Hershey linens w/borders, wb, un
- 23 8 PA Turnpike linens, un
- 24 8 Ohio views, 5 linens, 3 c
- 25 12 Grist mills, most show waterwheels

- 26 16 Old postcard book marks
- 27 37 Wild animals
- 28 42 Birthdays, incl. fancy type
- 29 23 Mixed holidays
- 30 31 Birds, wild and domestic
- 31 30 Comics, mixed eras
- 32 40 Comics, mixed eras
- 33 54 Comics, mixed eras
- 34 38 Busy People fill-in PCs
- 35 44 Fine Arts PCs

- 36 3 Ephrata, pnm Quarryville 1906
- 37 3 Lancaster, 1 Monroe County

- 38 5 Tuck Oilettes - Phila, Valley Forge
- 39 5 Lancaster - Center Sq., Wheatland
- 40 7 Bamforth Verses - Shade/Old Apple Tree
- 41 30 Bridges, some construction, all PC eras

- 42 30 Animals + 2 Phila. Zoo folders
- 43 35 New Jersey shore, all eras
- 44 45 Real Photo type - views, people, bldgs.
- 45 30 Ships, boats, all eras
- 46 60 Foreign, all ears, some nice stamps

- 47 35 Art - paintings, sculpture, all eras
- 48 50 Motels, inns, resorts, c, u/un
- 49 9 sets - PCs and miniature dups
- 50 40 Oversized - ads, political, Hershey, few non-PC

- 51 10 Boats, ships
- 52 10 Clocks
- 53 15 Churches
- 54 10 Flowers, gardens
- 55 10 Gettysburg, PA
- 56 10 Large Letter greetings
- 57 3 Marietta
- 58 10 Masonic
- 59 10 Moonlight
- 60 24 (book) Ninja Turtles

- 61 Bag of foreign postage stamps
 - 62 Large bag of US postage stamps
 - 63 Bag US stamps - mostly high values
 - 64 47 Large Letter linen postcards
 - 65 50 Real photo PCs "instant relatives"
 - 66 Nearly 300 mixed PCs - mostly early
 - 67 3 Postcard Albums, like-new condition
 - 68 Bunch of used Ultra Pro pages, mixed
- PLEASE WAIT UNTIL END OF SALE BEFORE
ASKING FOR YOUR RECEIPTS IF YOU ARE A
SELLER. If it's inconvenient, you will be paid at the
next meeting.

For Sale

Personal Word Processor

Don't let the name scare you. If you're still using a typewriter and don't want to take the plunge into computers, here's your answer. It's an electric typewriter with a nice big screen to preview (and correct) your work before you push a key that types it professionally. It has a Spell-Right feature and a few amenities that are easy to learn - or can be skipped if you wish. Excellent condition w/4 extra ribbon cartridges (to take you into the REAL millennium). First \$75 buys it. *This is a personal sale with me - Jim Ward.* Ph. 1-717-721-9273.

For Sale

Computer, Printer, Copier

Offered to LCPC members first.

Mac Performa #6360CD computer 16 MB, 1.2 GB, 8XCD with **15" monitor** along with these ten CD-Rom programs: Mayo Clinic Family Health, Adobe Photo Deluxe, Quicken Office Aide, American Heritage Children's Dictionary, Grolier Encyclopedia, Thinking Things (games), 3-D Atlas, Club Kidsoft, Descent (game), and Movies & Videos (reviews). Used three years. Excellent condition.

Epson Stylus Color 500 printer compatible to the Mac Performa computer. Used three years. Excellent condition.

Canon Desktop Copier #NP1020 uses toner cartridges, prints in black up to 8 1/2" x 14" with reduction/enlargement from 70% to 122%. Accepts card stock and *excellent for making postcards*; manual or automatic feed. 53.9 lbs. Used 10 years. Fine cond.

Any reasonable offers from LCPC members accepted to Jan. 31, 2000 *then the three machines will be offered to the public. Receipts for the three go directly to LCPC treasury to defray costs of recently purchased items.* Contact Jim Ward for immediate sale and pick up at his home.