

MONTHLY EXHIBITS

National Park Week was the same week we met in April so we honored it with National Parks as our theme. Singles cards, rather than boards, were featured and the following members participated:

Shirley Bubb	FIRST	Devil's Tower
Teresa Jumper	SECOND	Yosemite
Ruth Frankhouser	THIRD	Yellowstone

Honorable Mentions

Kathy Kreider	Grand Teton
Jim Ward	Denali
Earl Carver	Grand Canyon
Susan Glass	Rainier

Amazing – no duplication of parks! Thanks to all of you for bringing cards and be sure to show up in May with a **board of People in Uniform**. (NOTE: we've broadened the subject of Peace Officers to any People in Uniforms. June is still planned as a **board of Horses**.)

PROGRAMS

April's program included eleven members participating in Show 'n Tell and, although it was a rainy evening (only 60 members were present), we thoroughly enjoyed the variety of **Favorite Postcards**. They were shown on the opaque projector along with a 2-minute maximum presentation.

The non-competitive program proved to be educational and humorous – a mix for which LCPC is famous.

- 1) Book Peddler in Colonial York, PA. An art postcard published by member **Frederick Yohe**, part of a series of colonial York scenes still available from the artist.
- 2) The Fountain of Trevi. A familiar scene to those who visit Rome by **Polly Curtis**.
- 3) Love's Symbols. A pretty card with lots of sentimentality since it was given to **Mary Darrenkamp** by her parents.
- 4) Real photo of three children. A family heirloom belonging to **Carol Dennis**. It was in her grandparents' collection and included her father and his two sisters.
- 5) Tomo-Chi-Chi Toonahowi a Native American card - still an unsolved mystery from **Polly Curtis**.
- 6) Treasure Island, site of the World's Fair. Here **Earl Carver** recalled past preaching experiences.
- 7) Woman at Corn Crib. A non-outhouse card of **Norm Zimmerman's** unexpectedly containing his mother's notations on reverse.
- 8) Kaiser and Child. A prize belonging to **Gisela Withers**, the photo having been made during the Austrian crisis preceding WWI.
- 9) Mount Gretna Fire House. A prized view of a local resort belonging to **Jim Ward**.
- 10) Ellis Island. **Dot Fry's** contribution showed a mother with ten children and no husband.
- 11) Two fringed greeting cards (back to back) using mohair from an Angora goat by the goat specialist himself, **Jake Fisher**.

Ed. Note: My thanks to Mary Ann Guntow for her laborious efforts in taking these notes in dim light or no light while the opaque projector showed the cards for both the monthly competition and the program.

WINNERS EVERY MONTH

Barbara Heim was the lucky winner of \$19.50 in the 50/50 drawing. **Ray Dennis** won 150 PC sleeves and **Sam Nolt** won 10 PC pages. We have door prizes and a 50/50 each month – more good reasons to attend!

MAY

The program for May will be the no program at all but rather the very popular **FREE-FOR-ALL**. If you're a new member or not a regular attendee this is a great experience! The table space is Free for All, not the usual \$2.50 per 8' table charge.

You bring anything you'd like to sell so long as it's **postcard related or paper items**. No garage sale items or bulky wood or metal – we must care for the Farm and Home Center's property. You are allowed up to two tables per household or you may share a table with one or two members if you have only a box or album.

If you don't wish to sell – bring lots of moolah to spend. Buying and selling will be from 5:30 to 9 PM with a short 15-20 minute business meeting about 7 o'clock. Bring you family and friends, however, only members may set up and sell.

MOTHERS' DAY



The sweetest, holiest name on earth:
Our lips can frame no other
So dear to every human heart –
The magic name of "MOTHER".

Mothers Day card in Series 901 by Taylor Platt Co., NY, NY. Others we've seen begin –
A man may be old in the world's ways.
A beam that brightens darkest days,
Wealth may vanish, hopes may perish.

NATIONAL POSTCARD WEEK May 7 to 13, 2000

It's that time of year once more when many deltiologists as well as postcard clubs publish their own PCs to promote our hobby – the fastest growing, if not the most popular, hobby in the world.

We feature our own club's NPW card as well as those of LCPC members in every May issue. The featured subjects and exchange/sale details follow.

LCPC celebrates the 100th anniversary of Lancaster's first "skyscraper". It was built by Frank W. Woolworth in 1900. Woolworth had his first successful store in Lancaster, PA and after two other locations on N. Queen St., erected this twin towered edifice on the southeast corner of Queen and Grant Streets just a stone's throw from Penn Square. (Woolworth admitted he learned the hard way about NOT locating a store on the town's main thoroughfare.) The grand building featured a roof garden opened to the public for entertainment and good food. The 5-story structure was replaced in 1948 and *that* building succumbed to the demolition ball in 1999.

The NPW committee chose several subjects that were voted upon by the attending members several months ago. Then, from four different old Woolworth postcards, the members chose this card by Samuel Langsdorf.

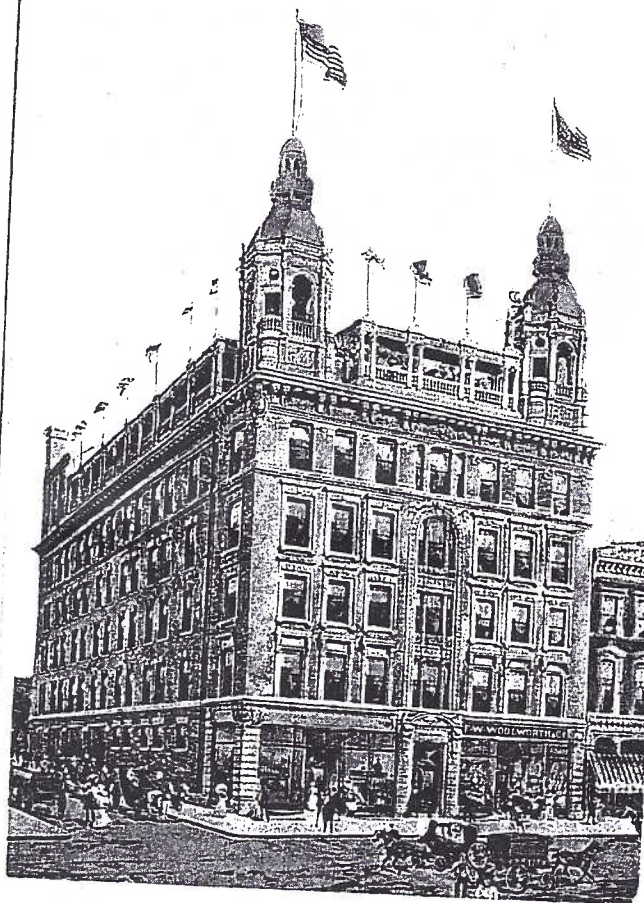
This is LCPC's 11th NPW card. An edition of 500 allows us to give each of our 300+ members a copy (included with this issue of THE CARD) and have about 200 for sale or exchange.

The full color card is for sale for 50¢ each plus SASE or you can have yours free in exchange for your 2000 NPW postcard. See address on page 1.

Earl Carver has been publishing NPWs since Day #1. He continues his series of b/w photos featuring himself and slushpump. (That's trombone to the novice.) His Carver Card doesn't mention price but you can surely exchange on a 1 for 1 basis at 212 Pheasant Dr., Columbia, PA 17512.

Jim Ward's 10th NPW card honors Native Americans on Coins with emphasis on the new dollars, which feature the Indian scout, Sacagawea. He's added many more facts on the reverse of the b/w card. Exchange or sell for 50¢ and SASE. 200 printed. Jim's address and LCPC are the same. See page 1.

NPW May 7-13, 2000. The Lancaster County Postcard Club celebrates the 100th anniversary of the city's first "skyscraper", built by Frank W. Woolworth.



*Whether preaching the Word
or playing the trombone,
Earl proclaims the 17th
National Postcard Week, May 7-13, 2000.*

NPW
May 7-13, 2000
celebrates

Native Americans on Coins

Sacagawea dollar
(shown 160% actual size)
2000 -

Glenna Goodacre, sculptor
Model is 22 year old Randy 'L' Teton,
a Shoshone college senior. The pose, Jean Baptiste, is the artist's rendering.
Actual size: 26.5 mm.



Indian/Bufalo nickel
1913 - 1938

James Earle Fraser, sculptor
Model is composite of 3 aged chiefs -
Iron Tail, Two Moons and John Big Tree



Indian Head cent
1859 - 1909

James Barton Longacre, sculptor
Modeled from a statue of Venus in Phila. Museum,
not his daughter in headdress as myth would have it.



Betty Jane Weaver used her original drawing of the Montauk Point Light on Long Island for her 4th NPW card. She also includes factual info on the reverse. The full color edition of 150 is available for exchange and SASE or 50¢ each. Write to 235 E. Plum St., Elizabethtown, PA 17022.

Bert Cohen, Boston's (and maybe the world's) marble king has a long series of NPW marble cards. The dark colors didn't produce very well in the commissioned painting by Davis Seignez. The edition of 300 is available for exchange. No mention of sale price. Write 169 Marlborough St., Boston, MA 02116.

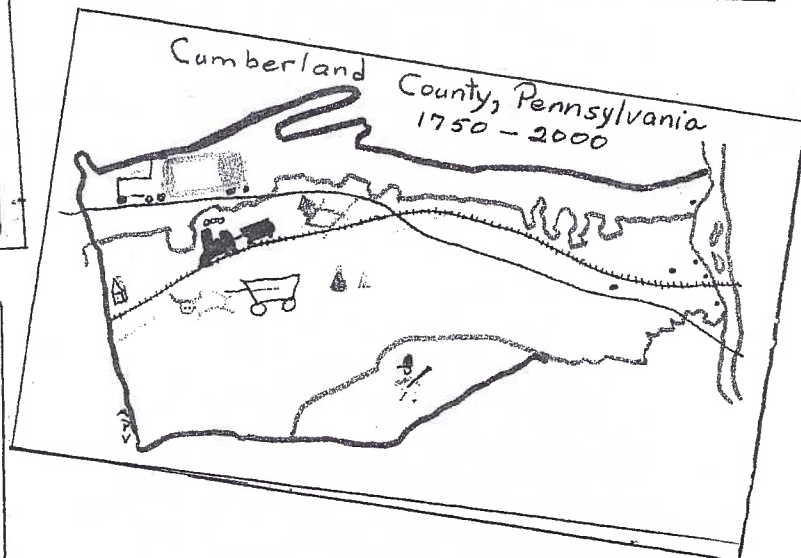
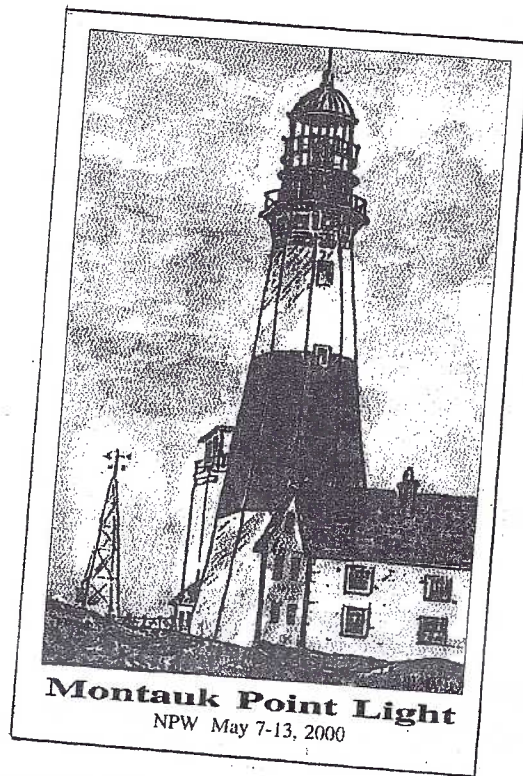
The Tucson Post Card Exchange Club published a classy full color card. It also publishes on of the country's better newsletters. An old PC shows "one man in a thousand". Their One Club in Two Thousand is a neat variation on the old theme. The Stephen J. Farley Co. of Tucson printed 500 cards. Exchange w/SASE or write for sale price. See address on their card.

Stan Hopkins (perhaps the NPW king) found 1999-2000's biggest non-event a subject to feature on his 2000 card. The year is included with reverse info*. Write to 10 Kristen Hts., Parry Sound, Ontario, Canada P2A 2Z6. Stan like to buy old NPW cards - singles or big batches. He will exchange.

Last, but not least, **Anne P. Valsing** at Box 223, Camp Hill, PA 17011-0223 labors each year over each and every card she makes. She features on her 2000 NPW card the 250th Anniversary of Cumberland County, PA in color. She will exchange or sell for \$2.50

* Did you know that an NPW card is only legitimate if it includes the current year (preferably with week listed) as well as "NPW"? Aside from that, you as the publisher, have free rein to make or have printed, any subject of your choosing. Many cards are now continental size although all we've shown with the exception of Bert's and Stan's are standard size.

All cards are reduced 30% except LCPC's.



This 'n That

Dorothy Aument was pleased to receive response to her request for Southern Lancaster County postal cancellations. **Gerald Hostetter** had one for Bon View. She'd still be grateful to hear from you. See her Want List in April's CARD. Your editor apologies for listing one PO as Ash Bottom. He knew better. It should have been Oak Bottom, a one-time suburb west of Quarryville. Dot would see like a cancellation of Oak Bottom.

Em and Jim Keebler's phone number should read 569-6901.

Expo exhibit theme ideas are requested. If you have an idea, contact **Jere Greider, Walter or Barb Mowrer.**

It Went Through The Mail

featuring unusual postcards that were actually mailed and delivered.

This country celebrated its own discoverer, Robert E. Peary, who was credited with discovering the North Pole on April 6, 1909. Not only is the card's snowy mountain covered with patches of tinsel, but the Admiral's parka is made of thick fur that survived the mails ninety years ago and is still intact. It was posted in October 1909 to Master David T/Ferrine at 215 Jamaica Ave., East New York, Brooklyn with "compliments of Nettie".



Book Review

PROPAGANDA

POSTCARDS of World War II

- More than 300 postcards from over 20 nations with incisive commentary by **Ron Menchine**.

Ron was not tooting his own horn when he put the above on the front cover of his latest book. It's guaranteed to be a best seller and not because Ron is an LCPC member or a friend of the editor. I fully believe that this exquisitely illustrated 160-page paperback will become a benchmark for future books written about World War II postcards.

If your child or someone you know didn't grow up experiencing WWII, this book - even without the 300 colored postcards - would be a running commentary on the war that involved more nations and more people on earth than any other conflict.

My WWII postcard collection might total 200 cards, but I dare say that among even the common PCs Ron shows and describes, there are countless cards I've never seen nor heard of...and not from just allied countries, but axis power publications as well.

Many of us know Ron Menchine as the last announcer of the Washington Senators baseball games and we know his expertise in *that* field. This is another of Ron's loves and it won't take you but a few pages to realize this. The subject is authored with the acumen for which Ron is known.

In case you haven't noticed, I highly recommend Propaganda Postcards of World War II. At \$22, it's this Dutchman's BEST BUY for the year 2000.

Contact Ron at P.O.Box 1, Long Green, MD, 21092 or see him at a local show. He was in Lancaster in March at the Morlatton Show and will surely be back for our August Expo.

Several artists played major roles in promoting propaganda for the Allies. One is featured on the next page. The set of six PCs appeared in Esquire. The Il Duce card, for instance is a strapping 4" x 7", unheard of in those pre-continental-size PC days of World War II, showing the extreme to which we allies also carried on war propaganda. Do you think those Reo wagon loads of newspapers youngsters collected during the war became the Szyk postcards?

THE BRIDGE - COVERED

It came to me attention from a subscriber to the Postcard History Society Journal that a publication The Bridge-Covered might be to my liking. It is.

The organization is for collectors of covered bridge postcards. Their goal is to help members locate, identify, exchange and learn more information pertaining to postcards. Their theory is that there's a better chance to help each other where more people are involved, thereby making their hobby more fun. Agreed.

If you're a covered bridge buff, or maybe just wish to learn more about this facet of our hobby, you're invited to subscribe to their quarterly publication for just \$8 a year. The Spring issue is 10 pages with 15 illustrations included in articles about the Mansfield CB accident in, and known PCs of the bridge; Theo. Burr's home; members' projects; The Eastern Illus. and Pub. Co., publishers of fine PCs; the Meems CB in Mount Jackson, VA and known PCs; new PCs available, a postcard show listing and a few ads. Contact Linda Jane Willauer, 110 Shady Lane, Fayetteville, NY 13066. Their web site is www.valleyoutlook.com/thebridgecovered.

Born in Lodz, Poland in 1894 (then part of Russia), Arthur Szyk went to art school in Paris and at 15 was drafted into the Russian Army (WWI). He relocated to Paris then London and finally the USA by 1939 where he did his best "for the war effort" in swaying American public opinion against the Axis Powers. Esquire, Time and Colliers used his work on their covers. A 1941 survey conducted by Esquire magazine claimed Szyk's political cartoons were even more popular with young American military trainees than photos of movie actresses or pinup girls. Esquire published this 6-card set featuring some of Szyk's most brilliant work.. He became an American citizen in 1948, three years before he died.

Ed. Note: Thanks to Ron Menchine and Jim Rudisill for the information about the artist Arthur Szyk.



IL DUCE . . .



"JAPAN STABS THE USA IN THE BACK"

Set of 6 propaganda PCs by Szyk from 1942 Esquire mag.
Left. December 7, 1941.

Japan stabs the USA in the back with its attack at Pearl Harbor.

Above right. Il Duce.

Goering, Tojo and Death accompanying Mussolini (Il Duce) following his blunders in Italy.

Right. The Map Maker.

Hitler shows his Axis friends his plans for South America.



"This damn winter is just another intrigue of Roosevelt and the international bankers."

DETOUR ON THE GLORY ROAD

Above. Detour By The Glory Road.

Hitler: "This damn winter is just another intrigue by Roosevelt and the international bankers."

Upper right. The New Orderlies.

Axis overrun countries march ahead of a German officer on horseback.

Lower right. Some Necks. Churchill, FDR and Stalin treat the Axis leaders like toys.



THE NEW ORDERLIES



SOME NECKS . . .

American Wild Flowers

If you have a fondness for wild flowers you deserve to keep your eyes peeled for two little series drawn, colored and published by Charles K. Reed of Worcester, MA. The d/b cards are undated and we've only found one with a postmark – March 23, 1917.

The pastel colors are limited to the reduced images of each subject, however, the floral border (no doubt also by Reed) offers a pleasing gray/white contrast. Each flower has a brief description on the reverse.

There are 25 cards in each series. The series is identified on the lower left reverse with an A or B.

They were originally available for \$.35 per set or any 5 for \$.10.

Series A for which we have the master list card (on the reverse of a cardinal flower) has them listed numerically:

1. Common Milkweed
2. Butterfly Weed
3. Pink Lady Slipper
4. Yellow Lady Slipper
5. Pitcher Plant
6. Downy Yellow Violet
7. Ten Petal Sunflower
8. Tall Cone Flower
9. Bull Thistle
10. Oswego Tea
11. Jerusalem Artichoke
12. Wood Betony
13. Trumpet Creeper
14. Scarlet Painted Cup
15. Black-eyed Susan
16. Swamp Rose
17. Mountain Laurel
18. Wild Ginger
19. Dutchman's Pipe
20. Closed Gentian
21. Fringed Gentian
22. Cardinal Flower
23. Trumpet Honeysuckle
24. Sheep Laurel
25. Meadow Beauty

Series B (no master card, so an alphabetical listing):

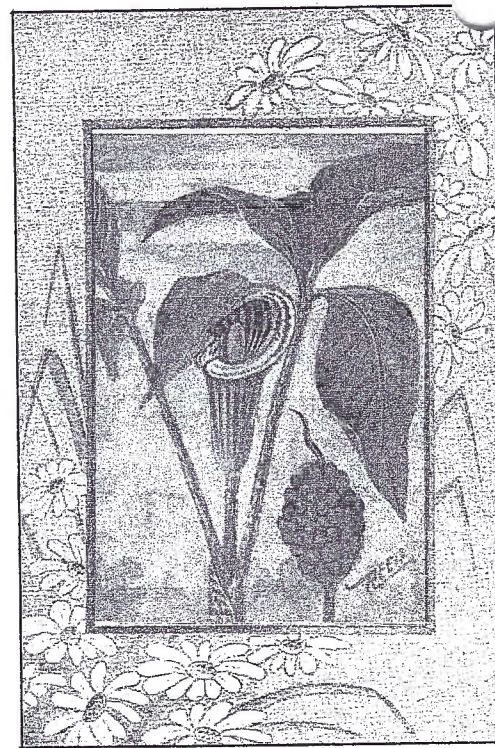
1. Blue Vervain
2. Bouncing Bet
3. Burdock
4. Canada Thistle
5. Celandine
6. Common Mallow
7. Day Lily
8. Fringed Loosestrife
9. Jack-in-the-Pulpit
10. Jewel Weed
11. Lance-leaved Goldenrod
12. Larger Blue Flag
13. Monkey Flower
14. New England Aster
15. Painted Trillium
16. Rhododendron
17. Rose Mallow
18. Smooth Aster
19. Snow-on-the Mountain
20. Swamp Honeysuckle
21. Sweetbrier
22. Turk's Cap Lily
23. Wood Lily
24. Yellow Star Grass
25. Yellow Wood Sorrel



Jewel Weed or Spotted Touch-Me-Not (series B)



Fringed Gentian (series A)



Jack-in-the-Pulpit or Indian Turnip (series B)

REQUEST FROM PARIS

From Paris comes this request. I will interpret the longhand as best as I can.

"I am a French old postcards collector from Italy." (I think he collects Italian views.) "Can you say to your members that I collect esp. illustrated ones by Rapfaele Tafuri but also Martini, Basch, Cisari,

Sezanne, Bertani, Della Valle, Conti, Volmar, Meschini, Corbella, Chiostris and also old PCs from Venice, Siena(palio), Pienonte, Connedia, Dell'Arte. Photo copies with price welcome!"

Gerald Roland, 39 Rue duBorrego, 75020, Paris, FR."

Well, I did my part, now how about you?

Local Homes

#5 in a series featuring local identified homes on postcards

The Henry B. Keiper home at 708 North Duke Street is an example of the fine color work produced by the Curt Teich PC Co. The view was one of 20 ordered by downtown merchant Ike Steinfeldt from the Chicago firm on Nov. 22, 1913. CT's early records don't always include the number printed as is the case with the Keiper PC.

Keiper was a leading industrialist in Lancaster at the turn of the last century. He was president of the Champion Blower & Forge Co. It was located on Harrisburg Ave. at N. Charlotte St. and employed 600 men in 1909. They manufactured a complete line of blacksmith tools that were shipped around the world.

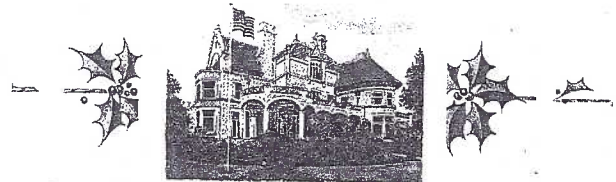
The second illustration shows a reduced image of postcard view. It was used as a Christmas greeting on a plain back card and is dated 1919-1920. Are we to believe the Keipers expected to use the greeting card for two Christmas seasons? (Is that how



H. B. Keiper's Residence, Lancaster, Pa.

the wealthy became wealthy?)

The mansion still stands. Like so many large homes that are expensive to maintain. It has endured minor alterations and served several businesses for the last forty years.



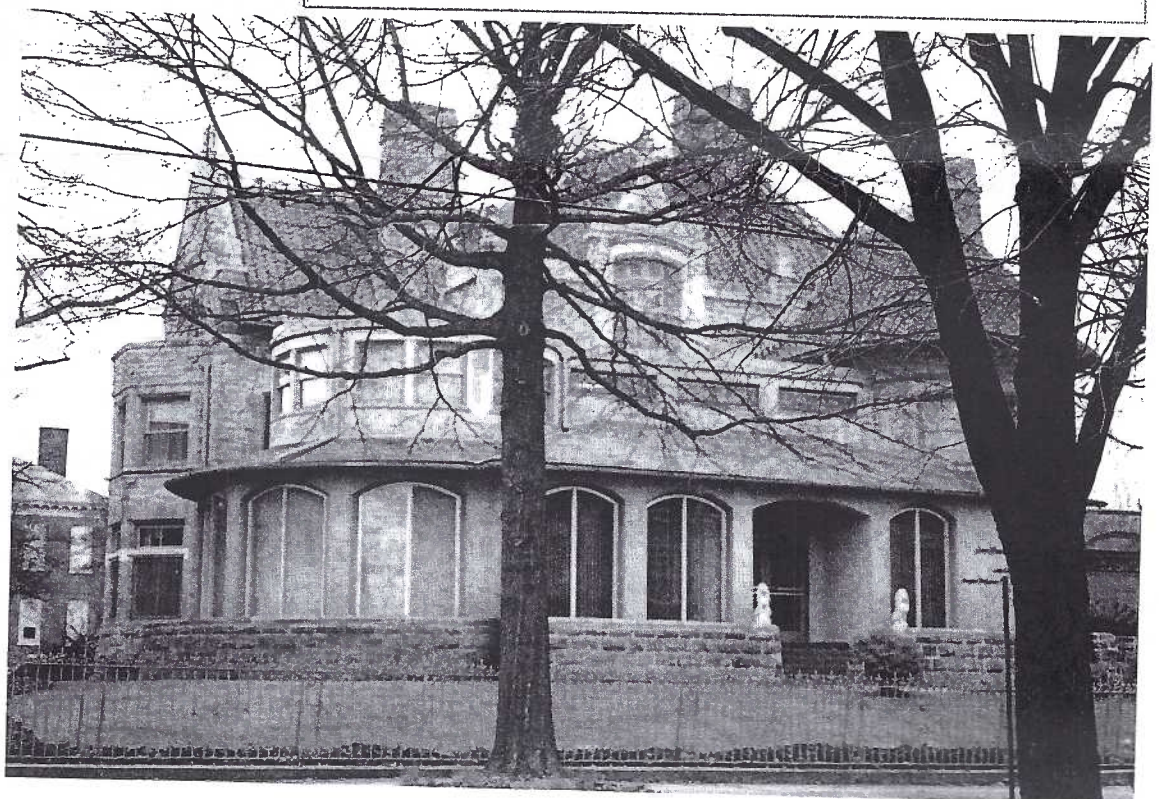
WITH kindest thoughts and best wishes for
CHRISTMAS AND THE NEW YEAR

LANCASTER, PA.
1919-1920

MR. AND MRS. H. B. KEIPER

June Picnic

At this writing the Program Committee has scheduled our Annual Picnic for Saturday, June 24. The site has yet to be determined. We generally meet about 1 PM and eat at 4 PM. Details in the June CARD.



WANT LIST

David Kalies, our southern-most member, is looking for these eight alligator border postcards:
S537 Riverside St. Johns River, Palatka, FL
S538 City Hall, Palatka, FL
S539 Scenery on St. Johns River, Palatka, FL
S540 Crescent on St. Johns River, Palatka, FL
S563 Church of Sacred Heart (no town listed)
S560 Loading Phosphate at Port Tampa, FL
S577 Chinese Pavilion, Tampa, FL
S609 Date Palms on Banks of Canal... Ormond, FL
I sold Dave several cards. He's fair. He can be contacted at 24 Tamarind Dr., Key West, FL 33040, Ph. 305-294-3418, fax 305-294-8182, e-mail docdc@webtv.net.

LCPC ON THE ROAD

LCPC will have a small exhibit at two locations in the next 60 days. On May 17th we'll attend Senior Fest 2000 at the Ephrata Recreation Center. Our exhibit will include several boards of local views as well as topical postcards. We'll hand out our 10th Anniversary PCs and back issues of THE CARD. Many seniors are interested in learning more about postcards as well as finding out what their accumulations of old cards are worth. We'll report the club's success at this first-of-a-kind-session in northern Lancaster County.

June 10th will find LCPC in Christiana. It's the dedication of the borough's old railroad freight station and we were invited through a collector connection that included our own **Mary Darrenkamp**. We will show boards of Christiana views as well as county railroad depots and again hand out our 10th Anniversary Postcard and back issues of THE CARD.

These events can only help our hobby and in particular, serve as good public relations for our local club. Members who wish to attend either of these celebrations are welcomed. Both are admission free.

Postcard Supplies

A word to the wise – keep your postcards alive and well. Always keep your cards standing upright, whether in boxes or albums. In hot, humid weather – or any time, cards must breathe and they can do this if air is allowed to circulate around them. Piles of flattened cards attract and retain moisture – a major killer of old paper items including postcards.

Postcard pages for as little as **\$14 per box of 100**. You may mix sizes for this discount price. Smaller quantities are 15¢ ea. **Postcard sleeves** are \$1.50 and \$2.50 per hundred, reg., cont. and modern sizes with **bigger discounts for quantity**. See me at the York and Lancaster meetings or phone 717-721-9273 or e-mail to midcreek@juno.com. **Jim Ward.**

FUTURE SHOWS

May 7, Cape May, NJ. So. Jersey 29th Anniversary Show in the Convention Hall.

May 26-27, Hagerstown, MD. John McClintock's Annual Show at Howard Johnson Plaza Hotel.

May 29, Landisville, PA. Giant flea market in Amos Herr Park just east of the town off Harrisburg Pike.

POSTCARDS EVERYWHERE

From member **Bill Seigford** comes an excellent 5-page article entitled POST CARD PLEASE! It appeared in the April 2000 issue of The Train Collectors Quarterly. It is Part 71 of an obviously long series sub-titled "Who Done It?" The premise is to find the ownership and/or location of vintage trains illustrated in the article.

The issue included six colored illustrations of Christmas PCs, linen train layouts and exaggerations. All in all, a well written article, which can only help our hobby.

Thanks, Bill, for the gorgeous pages!



MEMORIAL DAY GALA EVENT

There's always a gang of LCPC members set up to sell as well as buy at the **Amos Herr Park on Memorial Day**. If you haven't made this event, this is the year to try it – as a buyer or seller. Among the 400+ tables you generally find **Ruth and Harold Moyer, Walter Mowrer, Howard and Anne Steinberg, Jim Ward, Ray Dennis, Bob Kramer, John Long and Sam Nolt**, as well as roaming the grounds – **Leo and Helma Franz, Jere Greider, Gerry Hostetter, John Pierce, Ed Harris, Nancy Gambler, Bill Buckwalter, Charlie Groff, Bud and Barbara Heim, Al Lutz, Harold and Leona Rineer, Bill and Linda Studenroth** and I might have missed a few. But that host of genteel persons ought to tell you this is a Main Event of the summer season. Come as early as flashlight time (5 AM) and stay 'til we drop (about 3 PM).