

## July Program

### Jake's Goats

Jacob Fisher and his wife Pauline haven't been members of LCPC for very long (#505 and #506) but several of our members have known Jake for quite a while and it seems Jake has always had goats. He recently retired and turned his goat farm (milk is the main product) over to his son. Jake's fondness for the hollow horned ruminants with backward sloping horns has extended to postcards for quite a while.

At the July meeting we'll see many of his prize postcards and surely learn more about these quizzical animals. Do their tails stand up while a sheep's hangs down? Are they better at milk than butter or they better butters at milkers?

*When You See - You Don't know What?*



*"If It's tail Hangs Down It's a Sheep!"  
"If It's tail Stands Up It's a Goat!"*

*Upper Rt.* Humor from Ch. Hechler, Jr. of Darmstadt, Germany. Postally used Oct. 9, 1909. Is it a postcard reminder for a social event?!

*Above.* 1949 Dude Larsen black and white issue drawn by "Hoke" Denetsosie, a Navajo Indian Artist.

*Right.* Two examples from a colored set of six #1052 by S. Bergman, NY, NY. Copyright 1917.



*I ask her was I a winner  
An' she said, "All but!"*



*Geat There's worse butts than mine.*

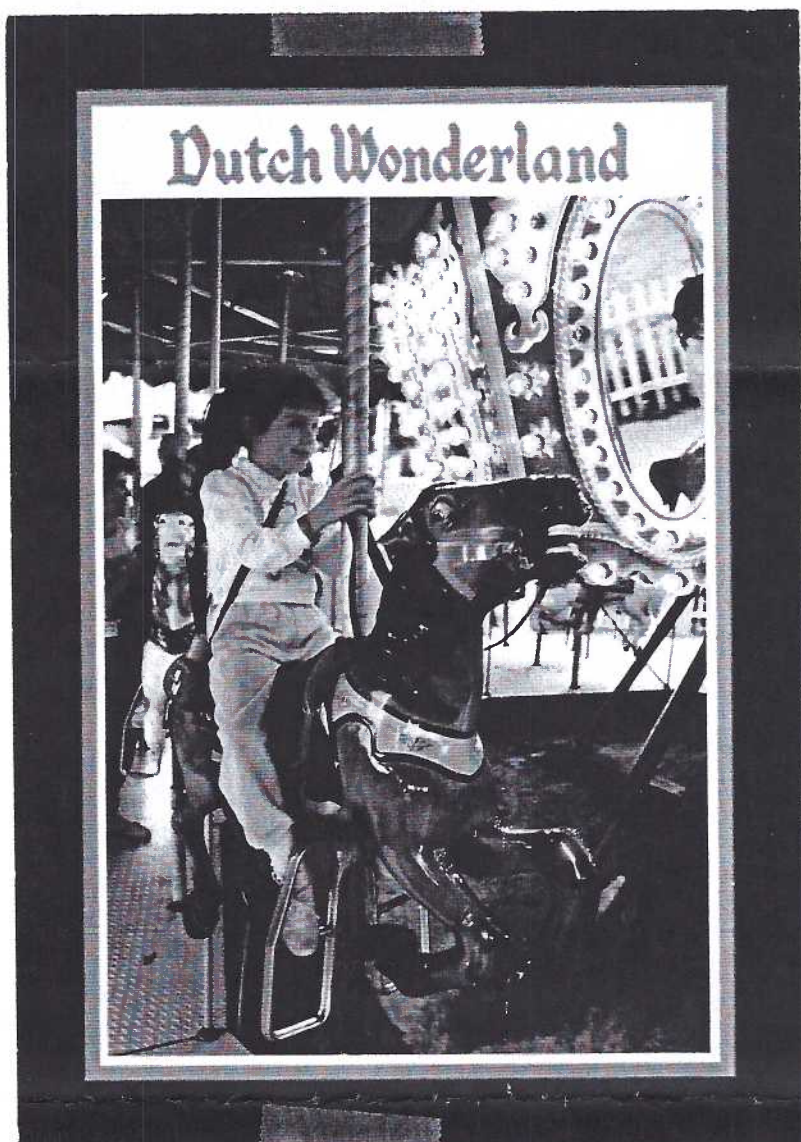


Falmouth PA is home to the Falmouth Goat Races held every summer. The little village (pronounced *fowl'muth*), along the Susquehanna River in the hinterlands of northwest Lancaster County, came by its claim to fame in a most unusual way. Jake will tell us about that. Before the races there's always a Kiddies' Pet Parade and this photo was taken of a pair of well-dressed lovers in 1998. With a peelable postcard backing from the photo shop it will soon be a postcard and part of Jake's growing collection.

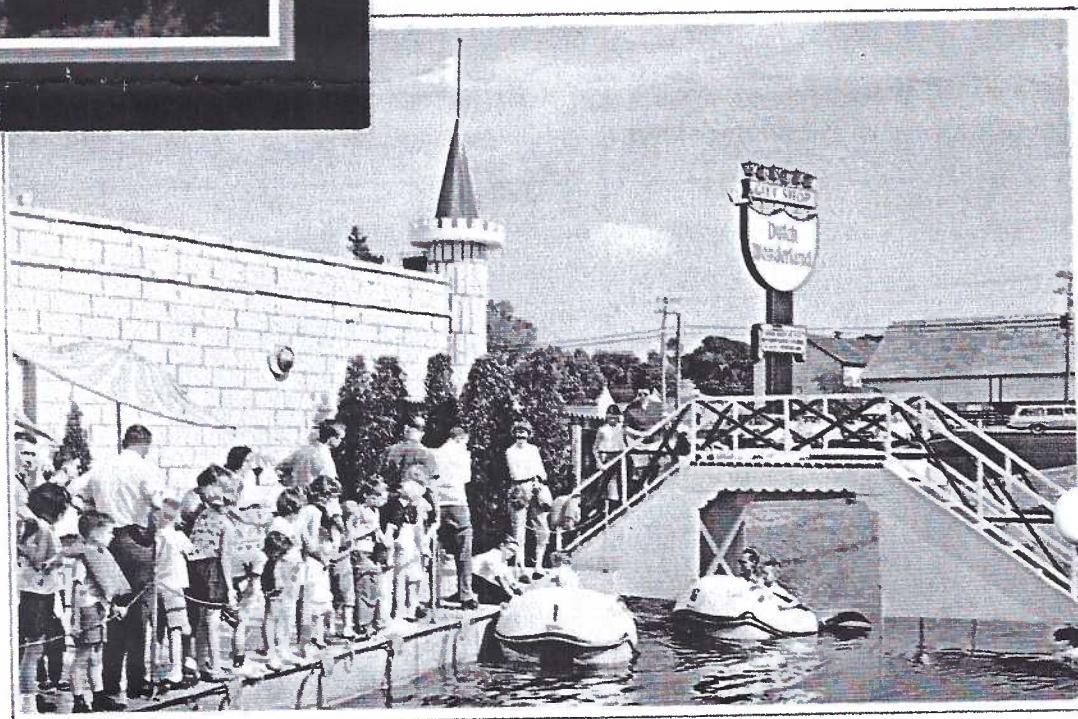


# DUTCH WONDERLAND

## Over 50 Years of Amusement Postcards at The Castle Gift Shop



#67189 DW-1 Koppel printed view for local publisher Stel-Mar (Marshal Dussinger). This early Dutch Wonderland view shows a long waiting line, indicating the popularity of the ride. "Ride the whale boats... you are the pilot as you guide your boat around the castle lake circling the magic island and the Dutch windmill."



Chromes will never be sought after by some collectors – "they're too new", "they're for the youngsters – the beginners". We hear so often. The same was no doubt repeated by our grandparents 80 years ago. Here then is a list of chromes of a local business to serve as a checklist for those "youngsters" as well as those of us who recognize chromes that portray the history of the last half of the 20<sup>th</sup> century.

Variations in the reverse captions are numerous – "14, 34 and 44 acres" show the progressive enlargement of Dutch Wonderland. The rides also vary but unfortunately there is no information for when they were constructed except the numerical ID of the card. *Please note that our descriptions are strictly for PC collectors and do not reflect the actual captions on the reverse.* All postcards are horizontal views and standard size unless noted.

Thanks go the Gerald Hostetter for gathering most of the views in the list.

Much to the amazement of local natives, Dutch Wonderland has been with us for more than two generations entertaining, albeit, mostly tourists to the county. As you read the list of rides - an amazing array of excitement - we must also admit that Dutch Wonderland has been the Rocky Springs of the last 50 years...and all beautifully preserved on chrome cards - the cards we thought would never become collectable.

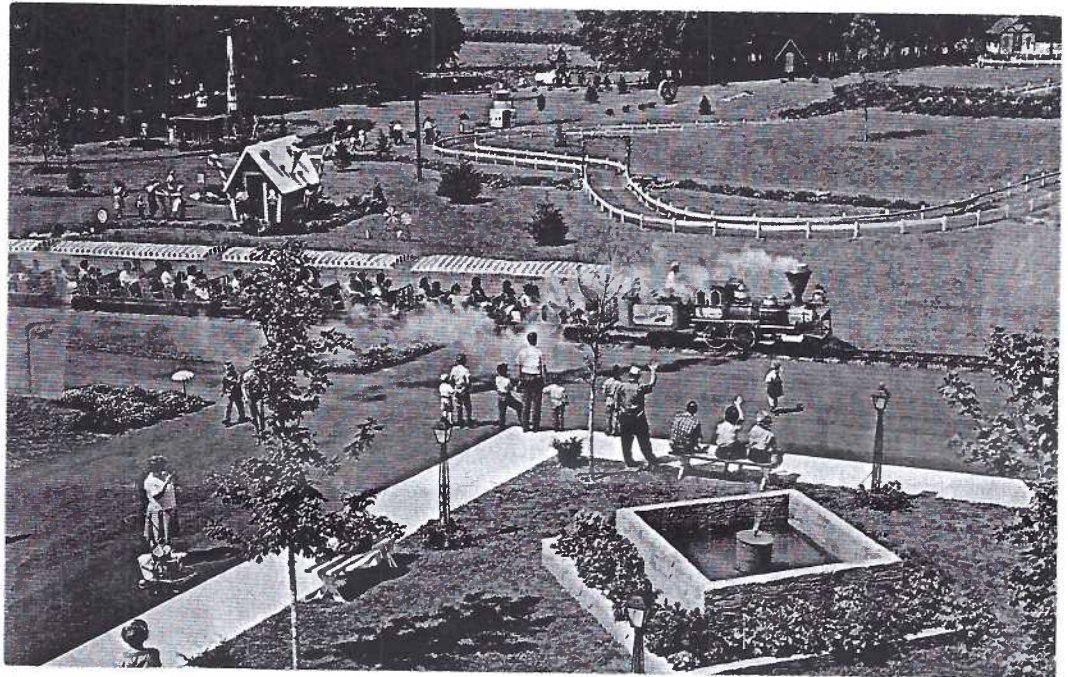
SDM 956 by photo graphics inc. of Harrisburg, PA. photo by Steve Miller. (See checklist of Dutch Wonderland postcard views.) The summer of 2000 is the year of the Carousel. In Lancaster a drive is on to complete funding for purchase of the original Rocky Springs carousel which is stored temporarily in an undisclosed location with hopes that it will again be enjoyed by the area's youngsters at a nearby site.



# DUTCH WONDERLAND continued

## Dexter Press for James Hess

- 23263-C Blue Monorail moving left
- 34698-C Red Monorail moving right
- 37804-C Red Monorail moving left
- 37805-C Blue Monorail moving right
- 74426-B Castle, front view in daytime
- 74490-B Castle, front view at night
- 74491-B Gift Shop, brochures on right
- 74492-B Gift Shop, postcards on left
- 76357-B Whale Boats
- 76358-B Mechanical Cow
- 76359-B Open Car Train on curve
- 76360-B Giant Shoe with slide
- 76361-B Gingerbread House
- 76362-B Open Car Train moving right
- 76363-B Barn and Silo with slide
- 76364-B Lady Gay Riverboat
- 79704-B Miniature Train, etc.
- 79705-B Castle at night, ¼ view
- 90400-B Swans and Train (aerial)
- 90401-B 1910 Buick Ride, Train
- 97865-B Five views on artist's pallet



#79704-B by Dexter Press for local publisher James Hess. The stock description on the reverse includes mention of Dutch Wonderland as being only 14 acres, indicating this is an early aerial view.

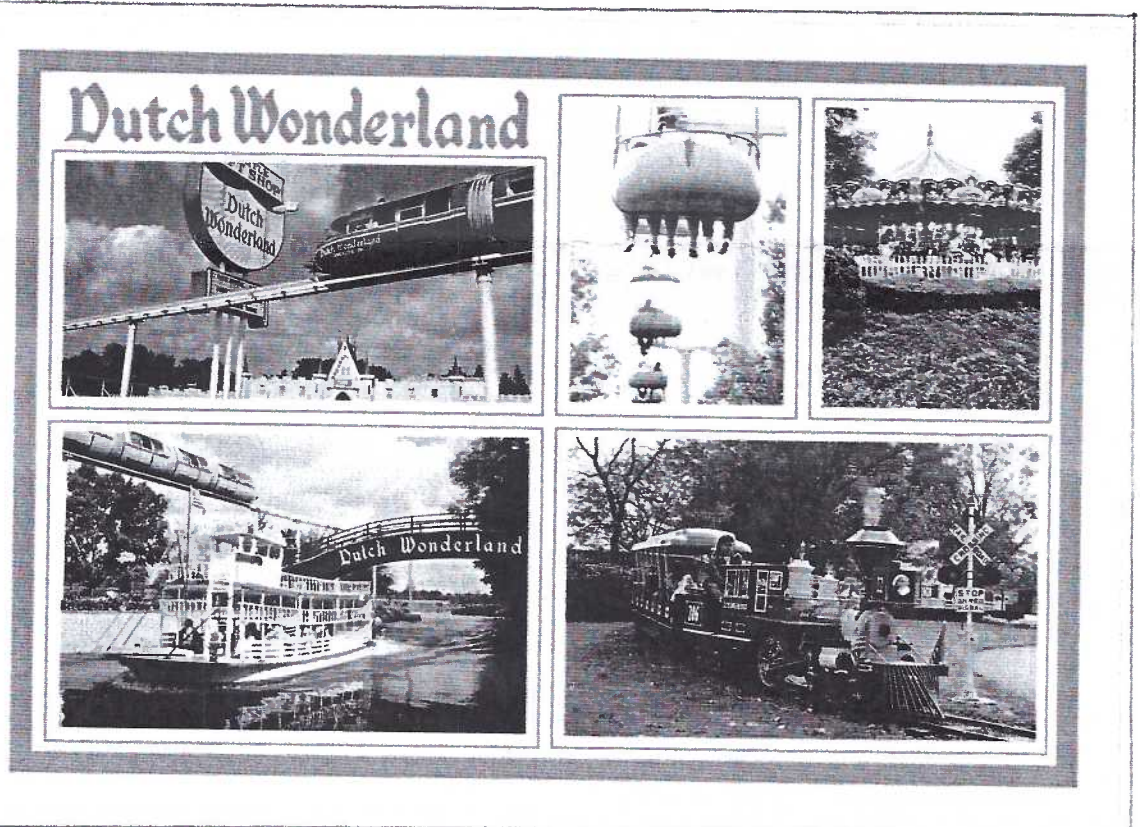
photo graphics inc. view, #SDM955 with photo also by Steve Miller. Multi-views have always been popular with the initial buyer as well as the next generation collector

## Koppel for Stel-Mar

- 67189 DW-1 Awaiting Whale Boats
- 67190 DW-2 Indian Village
- 67191 DW-3 Little Red School House
- 67192 DW-4 Open Car Train w/barn
- 153386 DW-5 Flume Ride
- 137285 DW-1 Antique Auto Ride
- 137286 DW-2 Feeding dolphins

## Photo Graphics Inc. (4"x 6")

- SDM955 Multi-view of five rides
- SDM956 Carousel horse (vertical view)
- SDM957 Red Monorail moving to left





**July's Exhibit Competition Topic** will be the letter "A" and it will be one postcard only – just one card –, which opens the World of A to all of us. The Exhibit Committee chose A so that it might keep our program presenter's goats company should you choose an Animal. Disneyland opened in July 1955 so you might choose an Amusement park. If you can't find a card in your collection under those categories, try Add-on, Advertisement, Aerial View, Air and Space, Airplane, Airport, Alligator, Amish, Anniversary, Appointment, Arcade, Art (sculpture), Art Deco, Art Nouveau, Artist Signed, Astronomy, Australian Ballot, Automat or Automobile. If these don't help, send a \$10 bill and SASE to the editor and he'll sell you a great entry!



Cave of the Winds, Niagara Falls

**This miniature postcard of the Cave of the Winds at Niagara Falls** is not unusual aside from its size, and even that doesn't come nearly close to being the smallest card ever mailed. What places it a notch above the commonplace is its message. It was mailed from Harveys Lake, PA, a popular family resort in the Pocono Mts., on July 28, 1955 to Mrs. Wood in St. Louis, Missouri.

"Dear Dorothy, I am mailing back the girdle. Anna said it is too long. She can't sit down with it on. So Dorothy, don't bother with one. Will write soon. Love, Aunt Emma."

## Picnic Report (June 24)

With a prediction of near 90 degrees and high humidity only the stalwart members made an appearance but found it cooling enough under the trees at Jim Ward's home to stay right there from 1 until after 7 PM for bird feeder viewing, their covered dish meal and a short meeting.

### Members

We were honored to have Aida and Jose Rodriguez with us all the way from CT (and the Ft. Washington Show) as well as four-time postcard book author Ron Menchine up from Long Green, MD. York County was represented by Jim Rudisill and Ruth and Fred Yohe and Berks County by Gisela Withers. From Lancaster County's extreme south came Anne and Howard Steinberg; from the far northwest were Betty Jane Weaver and sister Anna Ruhl (Elizabethtown) and Bill Dissinger from Bainbridge. Bill also had cards to sell as did the picnic's host.

Lancaster residents were Mary Ann and Bill Guntow, Carol and Ray Dennis, Shirley and Ray Bubb and Ruth and Harry Lines. Betty Kreider and Betty and Tom Beck came up the road from Lititz and Ruth and Harold Moyer came down around the corner from Blainsport.

### Food

Speaking of which, we are once again indebted to the Moyers for their homemade beef barbecue, homemade fruit punch and meadow tea. There was an abundance of delicious baked beans and ham, various eggs, salads, swirling tacos, watermelon, cantelope, pies, cakes and on and on. Everyone ate themselves full.

### Board Competition

The HORSE was the subject in June and these boards were enjoyed by the members with the customary monetary awards of \$5, \$4 and \$3 for 1<sup>st</sup>, 2<sup>nd</sup> and 3<sup>rd</sup> place.

Harold Moyer	<b>FIRST</b>	Horsin' Around
Ruth Moyer	<b>SECOND</b>	Mane Attraction
Betty Beck	<b>THIRD</b>	Horses: The Way the West Was Won

### HONORABLE MENTION

Jim Ward Zimecterin – Our Friend

Congratulations to all, especially to Betty – her first time exhibiting! And speaking of horses, we had a sales display of Horseshoe Pictures made by 10-yr. old Daniel of the Beiler family, good friends of Jim's. He had them for sale for \$3, two for \$5.

### Program

The only minor flaw in the day's event was the absence of Dot Fry who had an emergency trip to the hospital and was unable to be speak to us about some of the "characters" she's known in this (northern Lanc. County) area where she's lived all her life. At this writing (6/25) she's due back in her home tomorrow to recuperate from a blood clot. We want to hear your talk sometime soon, Dot.

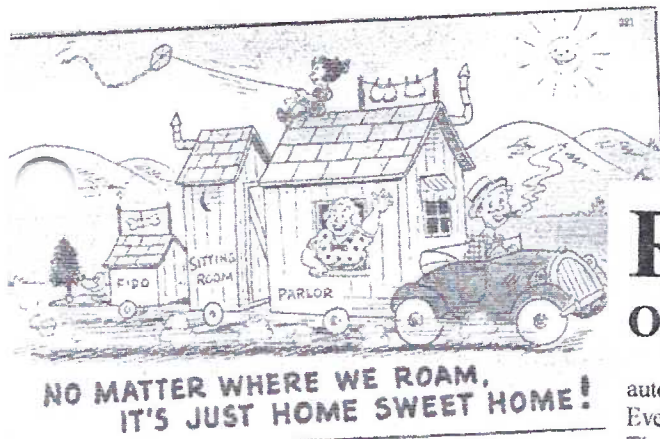
### Door Prizes

We were treated to two beautiful plants in hand-painted jardinières from Betty Beck and a plethora of miscellany from Jim Ward most of which brought a few jokes and an admonishment for not "cleaning out" more often.

### Thanks

Everyone seemed to enjoy the day and we're also indebted to Vice President Betty Beck for her second-month-in-a-row job of conducting the meeting.





## RVs Of Another Day

We took to the road when autos became cheap enough for Everyman – back in the '20s. The day trips were to Gettysburg, Valley Forge and the Shore in the East. Similar sites were visited in the West and mid-West. And those places produced the proliferation of the white-border PCs we find today.

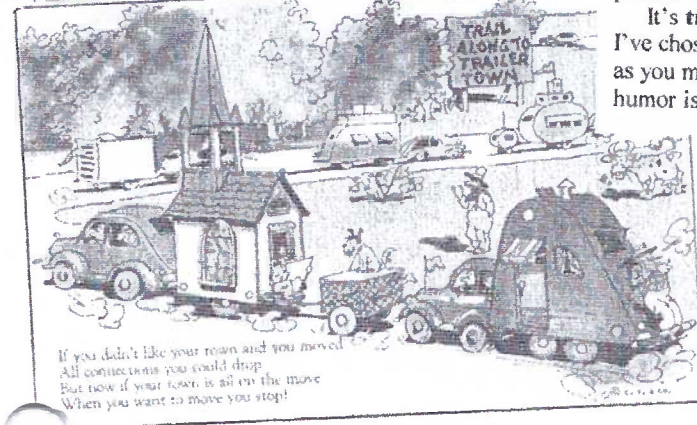
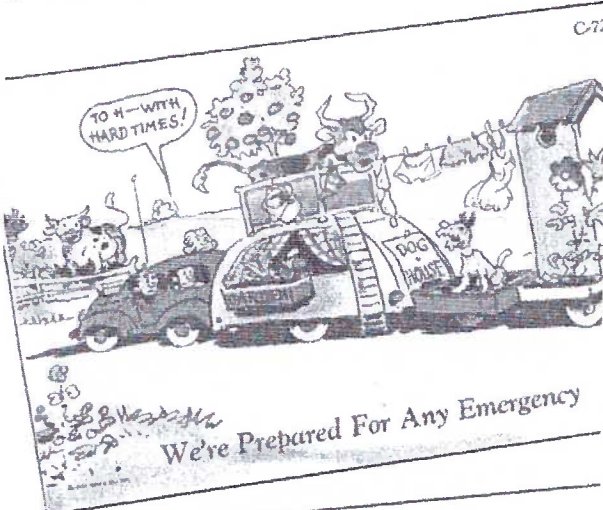
Then came the late '30s and '40s. Families got bigger. We needed more travel room, our vacation trips got longer and parks offered us easy hook-up accommodations. Enter the trailer – the RV of 50 years ago. It was just a trailer – not a recreational vehicle. A plumber was a plumber – not a mechanical engineer.

With the trailer, the comic postcard artists' imaginations ran wild.

Finding trailers on PCs is relatively easy – and cheap! A 40-card collection ten years ago cost barely more than \$1 a card. "Real" trailer park scenes are harder to find (only 5 of 20) and more expensive.

Most linen publishers got in the act. 20 of the 40 comic trailer PCs are by Curteich under series titled Trailer, Auto, Shadow and Comfort. Asheville was the second most prolific trailer publisher.

It's **trailing trailer comics** I've chosen to feature here and as you might expect, bathroom humor isn't lacking.



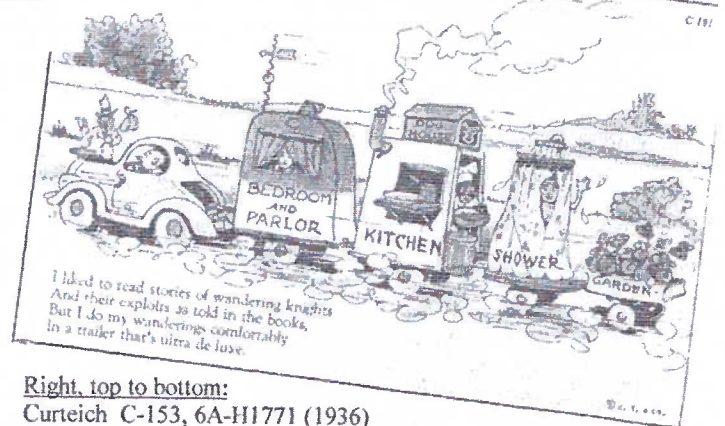
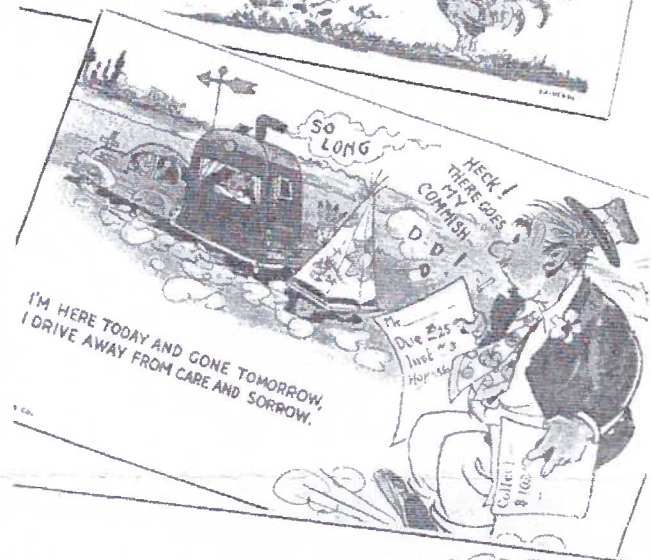
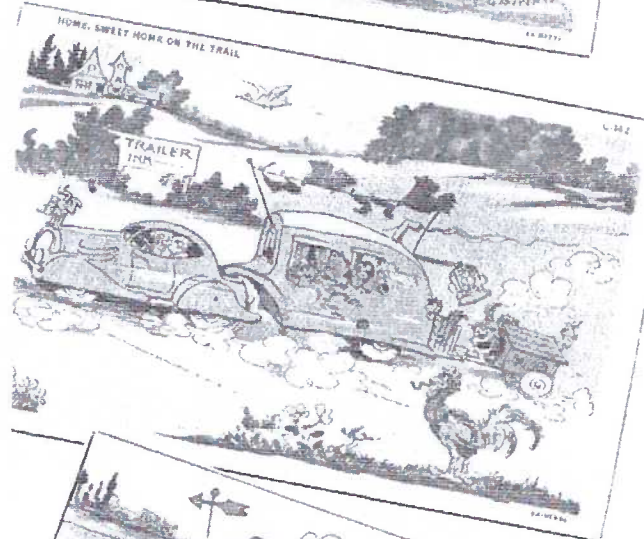
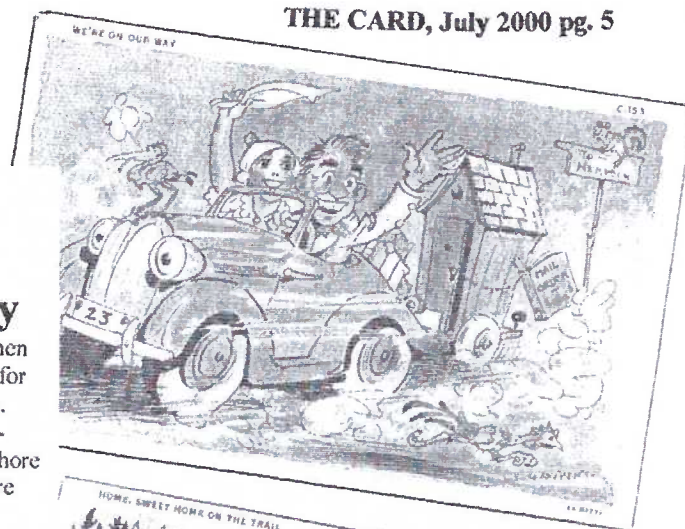
Left, top to bottom:

Tichnor 321, 72133 mailed 6/15/46

Curteich C-723, 6B-HB53 (1946)

Kropp C31, 322117

Curteich 7A-H2586 (1937)



Right, top to bottom:

Curteich C-153, 6A-H1771 (1936)

Curteich C-142, 6A-H11996 (1936)

Curteich C-189, 7A-H2408 (1937)

Curteich C-191, 7A-H2585 (1937)



## Local Homes

#1 Brubaker's Elysian Bower, 2544 Fruitville Pike  
#2 Hostetter's Mondamin Farm, 1305 Hunsecker Rd.  
#3 Keiper's Residence, 708 N. Duke St.  
#4 Burton's Residence, 32 Princeton Ave.  
#5 **The Raub residence** at 324 N. Lime St., is shown on the real photo PC (right) and has a handwritten ID on the reverse: Grandfather Raub's home, Lime Street and Madison, Lancaster. Your editor was lucky to find, several years later, the real photo PC below with the same address as part of its message!

"The Bunch" view has an undivided back. The exterior view has a Cyko stamp box (1904-1920's) and a short  $\frac{3}{4}$ " dividing line on the reverse, indicating PC stock in the early part of the Cyko era.

A quick scan of the 1903-4 City Directory lists these Raubs in residence at #324 N. Lime St:

G. Albert, engraver  
John H., clerk at Lancaster Sheet Metal Co.  
Mrs. Martha B., ladies' tailor  
Simon W., tailor  
S. Walter, machinist and Minnie S.



*"The Bunch"*  
*Taken St. Patrick's*  
*eve at 324 N. Lime,*  
*Lancaster.*  
*E.R.B.*



There's every reason to believe some of the Merry Makers at the St. Patrick's eve party – "The Bunch" – were some of the Raubs in the list above, including the couple in front dressed in Mikado costumes. The card was mailed to Miss Blanche Mill in the city on Apr. 10, 1906.

Little has been changed on the Lime Street building (2000 photo on left) except for the far left window that was made into a door – an entrance to upstairs apartments.

Your identified local residence on a postcard can appear in this feature to share with our readers. The best season to photograph scenes is winter – when the leaves have fallen.



## Salem Hellers at 275

So read the headline in the June 23, 2000 issue of the Lancaster New Era. Your editor must admit that this was a busy month and when a full-page story falls into his lap at the 11<sup>th</sup> hour he is most grateful to Lancaster Newspapers, Inc.

In the Olden Days, you drove from Lancaster to New Holland on Route #23 passing through Eden, Hornings, Mechanicsburg, Leacock, Leola and Bareville. (There might be a few other crossings I missed.) By the 1950's these little villages were melting together, an early sign of suburban sprawl. Even 50 years ago this busy highway left little time to reflect on the last 'burg before you arrived in the next.

A turn south in Leacock heads you toward the Old Phila. Pike on the Horseshoe Road. A sharp turn on the highest promontory in the area takes you round the big red church on the hill. It is Salem Hellers Church. When the card shown was published by Leacock general store owner H. D. Leman, it was called Salem Reformed Church. Leman also published a vertical view of the Zion Evangelical



Salem Reformed church at Hellers  
H. D. LEMAN, PUBLISHER, LEACOCK, PA.

Lutheran Church in Leacock as well as a card of his own store (shown).

All of these cards have undivided backs (issued prior to Mar. 7, 1907) and were printed by Express Printing of Lititz. The Salem PC exists with at least 2 Express backs, the likely need for a second printing. The article makes no reference to a particular celebration or milestone in the church's history

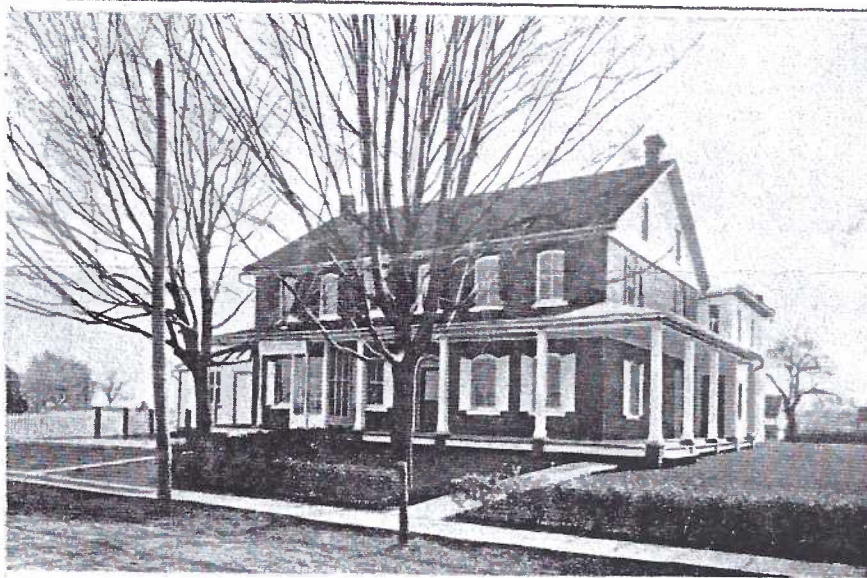
at this time. We *do* know it was a popular time for postcard use.

Salem Heller's initial records were lost or never kept but the "official" founding date is considered 1725. The earliest legible tombstone is for Vost Swope who was born in 1678 and died in 1735.

Today's congregation drives from all parts of the county. Present day members Latschar and Geschwindt are true indications of its German origin as a log house in the German Reformed Church of the 18<sup>th</sup> century. The United Church of Christ was created in 1957 when the Evangelical and Reformed denominations merged with the Congregational Christian Church and so it is currently known as the Salem United Church of Christ Hellers.

When railroads came to Lancaster County, crossings and stations were named for nearby landowners and so the Heller family's claim to fame.

Part of the yearlong celebration of the church's 275<sup>th</sup> birthday will be dedication of a 5 ft. obelisk containing the names of 30 Heller family members buried between 1793 and 1822.



H. D. Leman, General Merchandise, Leacock, Pa.

## Looking For More To Read About Postcards?

As a subscriber to **The Card** you might just like **The Journal of the Postcard History Society**. It's written and edited by the editor of **The Card**. There's never a duplication of articles between the two publications. Jim's formula, "A little E & E" - Education and Entertainment - is packed into 12 pages every three months. And since it's his *own* enterprise, he offers for sale most of the postcards that appear in the Journal. Each issue in 2000 has thus far included a full-color page. Subscriptions are \$6 per year, \$2 for a single issue postpaid. See address on page 1.



## LCPC EXPO 2000

### Exhibit Rules, Categories and Awards

One entry per category per member.

Mount postcards on boards 22"x28", vertically. Do not cover. Club provides uniform covers.

Exhibitor's name and category on back of each entry.

Categories: Advertising, Humor, Holiday, Disasters

Awards: 1<sup>st</sup> Place \$15, 2<sup>nd</sup> Place \$10 and 3<sup>rd</sup> Place \$5 in each category.

Best of Show \$25 (chosen from 1<sup>st</sup> Place Exhibits)

Peoples Choice \$25 (chosen by ballots)

All entries receive a specially designed 2000 Expo

Award postcard

Judging is based on:

Postcard Information 1/3

Presentation and Originality 1/3

Condition, Completeness, Rarity 1/3

All boards must be delivered before the Expo to the Committee or at the Farm & Home Ctr. Between 7 and 8 AM. They may *not* be removed until after the Peoples Choice Award has been presented between 5 and 6 PM.

Deadline for submission of entry form is July 31.

THIS IS THE ONLY ENTRY FORM YOU WILL RECEIVE. You may submit a copy. Mail or give to Barb Mowrer, 786 Kames Hill Rd. or Earl Carver, 212 Pheasant Dr., both in Columbia, PA, 17512. I will have an entry in the following categories:

### Bette in Florida

At last count LCPC has ten (10) Bettys or Betties on its roster. Considering several Elizabeths who may be known as Betty, perhaps an even dozen. This is not to imply Bettys are common. I consider several of these Bettys to be very close, "old" and dear friends – and most uncommon – all!

Bette Mays is a newcomer to LCPC (#543) and was a Lancaster native years ago. In a note mailed to Dot Fry with her dues in Spring, she said she joined us to reminisce about her old county as well as read about postcards. Last month she dropped your editor this kind note – "Really enjoy The Card. Please send me The Postcard Album, Issue #15 and four issues of The Journal of the Postcard History Society."

Thanks, Bette, for your triple vote of confidence and a special Thanks for the neat card you enclosed. It may be passé (1994) but the Rick Geary art and your foresight to come up with the unique topic makes it worth sharing with our readers.

At the time she created the card, Bette was living in Panacea, FL. The Picture Postcard Centenary was to be held in London Aug. 30 – Sept. 3, 1994 and the world's longest undersea tunnel (The Chunnel) was to open in the Fall between England and France. Missy and Manx Cat O' Bear are a special part of Bette's Florida family.

If you wish, you may correspond with Bette whose present address is at 8636 SE Longview Drive in Hobe Sound, FL, 33455.

## Expo 2000 Dealers

### Greider Announces Another Full House

It didn't take long for dealer contracts to be returned in late spring and Jere Greider, our 2000 Expo chairman, quickly assembled a room filled with dealers from near and far. He has a reserve list of dealers as well. With only a minor change we can expect another great year of good postcard stock and fine friends. Free programs with dealer locations and other details are being composed now.

**Expected at Farm & Home Center, August 19, 2000**

Agnes Cavalari

Helen Cox

Lee and Shirley Cox

Leo and Helma Frantz

Marilyn and Howie Gottlieb

Harris and Jane Gray

Jere Greider

Ruel Hartman

Dave and Trudy Williams

Bob and Mary Kurey

Ken and Ginny Kolb

Gordon McKinzie

Jay Miller

Jim Morrison

Arden Newsome

Jose and Aida Rodriguez

Dolores and Leon Rowe

Chris and Pam Russell

Dede and Daisy Schaeffer

Maria Schurz

Howard Steinberg

Barbara Trovci

Don Wachter

Jim Ward

Bill Wolfersberger

### Future Shows

**July 8. York, PA.** York Post Card Club's 10<sup>th</sup> Annual Show. Aldersgate Church, Tyler Run Rd.

**Aug. 4-5. Havre de Grace, MD.** Chesapeake Postcard Fair. Community Center.

**Aug. 19. Lancaster, PA.** LCPC's 8<sup>th</sup> Annual Expo. Farm & Home Center, Off Rte. #72 at Rte. #30.

*Details on enclosed postcard.*

**Sept. 17 Wind Gap, PA.** Lehigh Valley Post Card Club's 11<sup>th</sup> Annual Show. Plainfield Twp. Fire Co.

