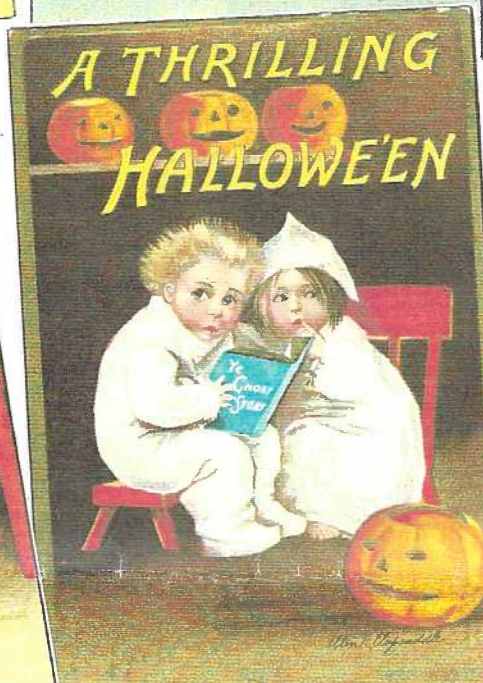
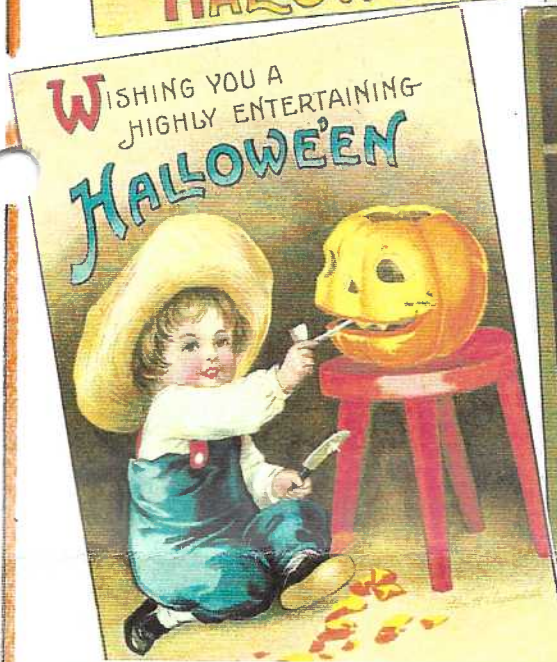


THE CARD Vol. 11, No.10. Issue 130. *Enjoying postcards through education and entertainment.*

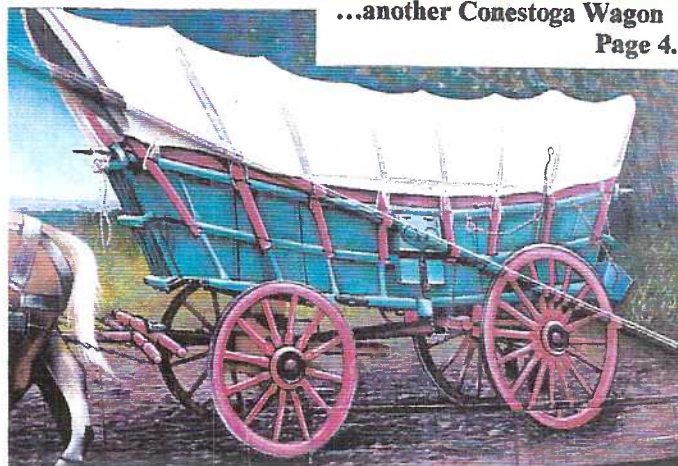
Monthly publication of The Lancaster County Postcard Club, Lancaster, PA.

Next meeting: Mon., October 16, 2000. Farm & Home Center. Buy, sell, trade from 5:30 PM. Meeting at 7 PM.

Club and Editor's address: LCPC c/o Jim Ward, 1795 Kleinfeltersville Rd., Stevens, PA 17578-9669 or midcreek@ptd.net.



...another Conestoga Wagon
Page 4.



Monthly Postcard Competition

The single card competition theme in September was Schools. Thirteen participants played to a full house of 69 members. As might be expected, a number of schools on postcards were shown by aging alumni. Some had actually graduated 10 years ago! Others – slightly longer.

Thanks to these folks for their brief descriptions at the microphone as their cards were shown on the opaque projector.

1st Ray Bubbs Indian School at Carlisle, PA

2nd Don Jumper High School in Eau Claire, WI

3rd Walt Mowrer Maytown H.S., Maytown, PA

Honorable Mentions

Harry Lines Millersville State Normal School

Ruth Lines Grade School at Conestoga, PA

Don Davis Landenslager Joint School, Hatfield, PA

Mary Ann Guntow Public School, Summerville, PA

Jim Ward Exceptional 1-rm. school on double PC

Theresa Jumper H. Payne College, Brownwood, TX

Susan Glass High School at Oxford, PA

Harold Moyer Groff's School (site unknown)

Mary Darrenkamp Lancaster Catholic High School*

Earl Carver Marietta School, Marietta, PA

* Mary's card, a chrome printed by Koppel for local publisher Stel-Mar, is SM-228, #55122. It was a "new find" for many of us with extensive Lancaster collections. Isn't it remarkable how "new views" continue to show up! As Charlie Griffiths used to say, "Never think you've seen them all".

October's board is **The Color Orange** – Halloween pumpkins are an obvious choice. Will there be any non-Halloween cards??

Nov. - *Presidents or Politicians* (board)

Dec. - *Children at Christmas* (board)

A Welcomed Full House

69 members are not unusual for our monthly attendance, but of late, we've had a plethora of members setting up to sell. This has brought buyers in as early as 5:30 and it makes for a welcomed full house. Selling were Dick Bishop (who has his 2001 Entertainment coupon books for sale at only \$21), Bill Buckwalter, Howard Steinberg, Bob Kramer, Jim Ward, Mike Middleton and Paul Weidman. It was also good to see Librarian Valerie Refi there with her backpack of library selections.

Member Info Updates

Joe Epler, #54, of Northumberland, PA is re-instated. **Dorothy Aument**, #469, has a new address: 300 Willow Valley Lakes DR., apt. E-202, Willow Street, PA 17584. Her phone remains the same at 464-1843. *LCPC's active membership stands at 326.*

Future Postcard Shows

Oct. 7 Towson, MD. Days Inn, Exit 29, Balt. Beltway. Free adm.

Oct. 7-8 Parsippany, NJ. Garden State PC Club, PAL

Oct. 22 Rochester, NY. Western New York PC Club Show. New location – Eagle's Club, 1200 Buffalo Rd. (Rte. #33). For info. call – 1-716-229-2104.

Oct. 27-28 Timonium, MD. Pikpost 2000 by Monumental PC Club of Baltimore at Days Inn.

Oct. 27-28 Allentown Paper Show at Fairgrounds.

Nov. 4 Belmar, NJ. Jersey Shore PC Club at Taylor Pavilion.

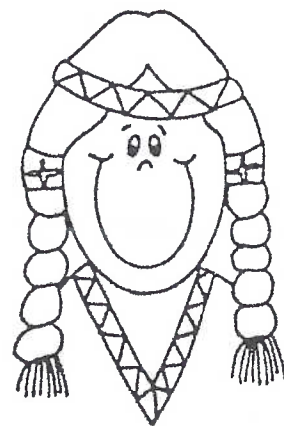
Nov. 17-18 Bill Martin's York Postcard Show. York Fairgrounds, York, PA. Entrance fee not listed.

Nov. 24-25 Morlatton PC Club Show. Farm & Home Center, Lancaster, PA. (PC or paid ad with this issue.)

MORLATTON POST CARD CLUB INC.

Postcard Show

Farm and Home Center
1383 Arcadia Road
Lancaster, PA 17603
(off Manheim Pike Rte. 72)



Friday, November 24, 2000 - 10 A.M. to 6 P.M.
Saturday, November 25, 2000 - 10 A.M. to 4 P.M.

Admission \$1.50
(25 cents with ad)

No Pre-Show Buying

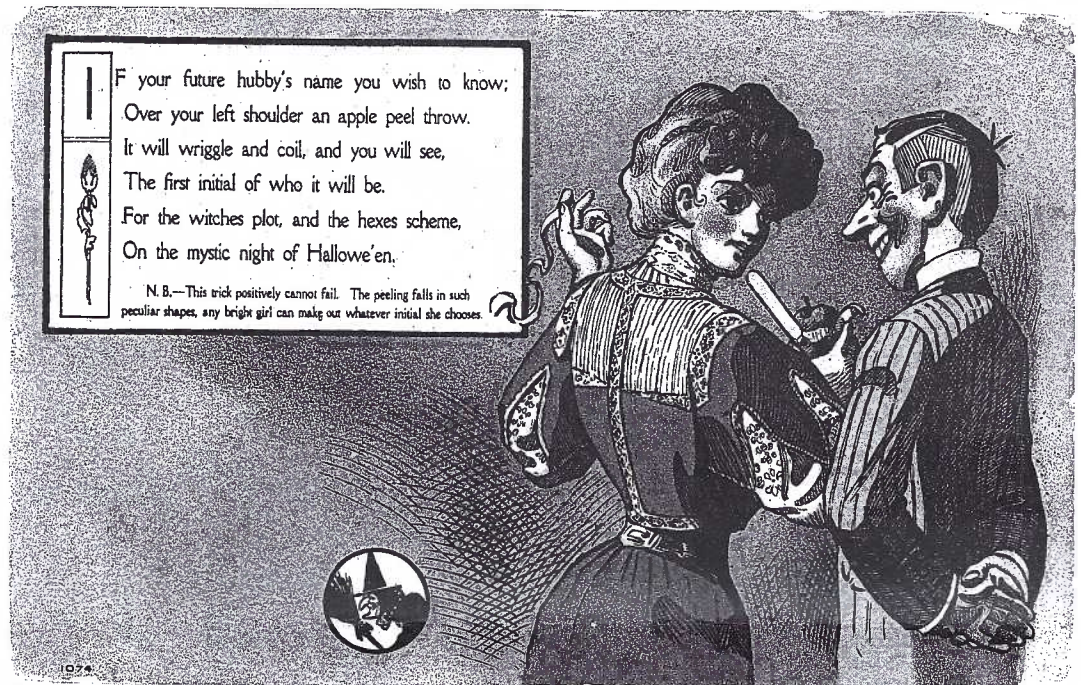
For more information call
Kay Feight, (717) 263-1638
Leon Rowe, (610) 444-064

Halloween Apple Peels

Looking through a collection of 200 Halloween postcards it didn't take long to establish a small list of superstitions associated with this fall holiday. By far the most frequently encountered with Halloween ladies was looking in a mirror to see a reflection (?) of their lover...but more on that subject when space permits.

The tradition of throwing apple peels over her shoulder showed up on only three cards although I'm sure a more extensive collection could reveal twice that number. The card (upper right) by an unnamed publisher (perhaps Julius Bien) explains the superstition.

Fine print - N.B. - The trick positively cannot fail. The peeling falls in such peculiar shapes, any bright girl can make out whatever initial she chooses.



If your future hubby's name you wish to know;
Over your left shoulder an apple peel throw.
It will wriggle and coil, and you will see,
The first initial of who it will be.
For the witches plot, and the hexes scheme,
On the mystic night of Hallowe'en.

N.B.—This trick positively cannot fail. The peeling falls in such peculiar shapes, any bright girl can make out whatever initial she chooses.

Card, below, is signed, "E.C.Banks" with "all rights reserved - Albert M. Wilson, Buffalo, NY". Dorothy Ryan suggests (and this collector agrees) the art bears a close resemblance to that of H.B.Griggs. It's high time some one digs deeper into the identity of this ubiquitous but enigmatic artist. Both German imprints.



Card, above, is from Set #2215 by artist H.B.Griggs, about whom we know only *its* name (not even *its* gender). Others in the set include the lady dealing with a mirror, a steaming bowl and apples on strings.

Our Halloween Cover

It wasn't our original intent to choose Ellen Clapsaddle children for our Halloween cover. It just happened that way. The first priority was *color* since we planned on a full color cover. Since a color page costs twice as much as the rest of The Card, our idea was to choose deep primary colors and get the biggest bang for the buck! Most of the International Art Publishing Company's cards are just that.

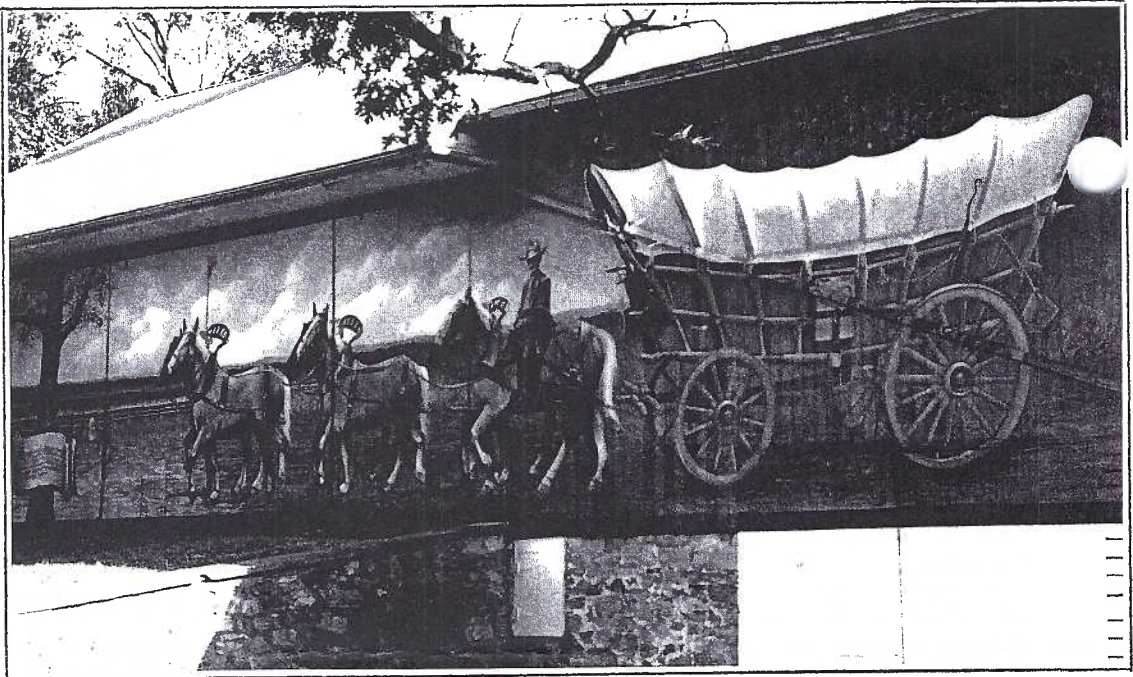
The majority of I.A.'s subjects are children by Ellen Clapsaddle and so our cover. Very few of Ellen's Halloween children are found on a horizontal format so we've filled the remainder of the page with a Gibson Art Co. card in traditional Halloween black and orange.

The Internationals are from various series. The Gibson card is unnumbered.



Top Right – The 64 ft. painting on the Arthur L. Reist barn at 1050 Eden Rd., Lancaster, PA.

Center right – Enlargement of the scrolled dedication to Jacob Reist. The young 21 year old Lancaster native died while serving in Gen. Braddock's army during the French and Indian War.



Another Conestoga Wagon Barn-Size Painting Would Make an Ideal Postcard

As so often happens, a CARD article coincides with a local event. Arthur Reist, the expert on Conestoga Wagons, was having his Eden Road barn embellished with a grand painting of a Conestoga Wagon while the Sept. CARD was in the mail.

Reist, a retired teacher in the Conestoga Valley School District, knows of what he speaks. When Ben Franklin sent recruiters into the hinterland for teamsters they were readily found in the Lancaster area. Jacob Reist was one. The story is best told by Art. It ends with Jacob, a 21-year old and one of 1,200 of Gen. Braddock's best, being killed in the French and Indian War. The date was July 9, 1775.

A 64-foot long graphic tableau on Arthur Reist's barn includes a scrolled dedication to Jacob.

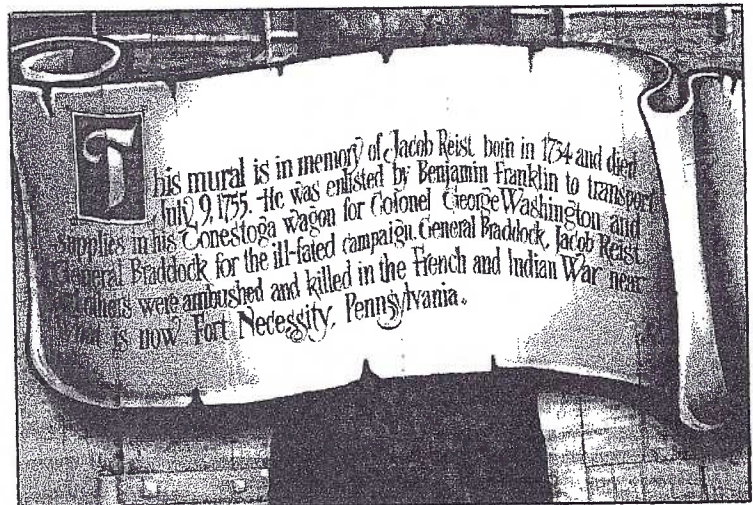
It was your editor's distinct pleasure to renew acquaintance with Art in the last few weeks. You too can enjoy the painting any time you wish. It's on the south side of the road near the Lancaster Bible College campus. Pull off the road away from traffic. You might even be lucky enough to find Mr. Reist working about his farm. He'll remind you that genuine Conestoga Wagons carry distinctive, unique iron handiwork. As his 50-page book so aptly implies in its title, Conestoga Wagon Masterpiece of the Blacksmith.

The expert reference is into its 7th printing and is available at better book stores as well as major historical sites throughout the county and the Lancaster County Historical Society. The \$12 book is also in the Mennonite Historical Society Book Store. Carolyn Wenger of the MHS also referred me to an excellent new hard cover book directed to children ages 6 to 10 - Conestoga Wagons by Richard Ammon.

\$165.30 Per Acre

A Lancaster view (of F & M's Old Main) included this message written Sept. 4, 1908: "Dear cousin, The sale is over. Isaac's place is sold. We bought it for one hundred and sixty dollars and thirty cents per acre. Fair price for the old homestead."

Ed. note: - A local 78 acre farm recently brought over a \$1,000,000 - more than \$12,000 per acre.



Conestoga Wagon Follow-up

Having walked the downtown Lancaster beats as a police officer for many years, the scene showing the Gingrich wagon in September CARD just didn't seem correct to eagle eye Jim McMullin, member #21. Recognizing a building in the background, he and Darlene, LCPC #20, took a few snaps of the scene and sent them *unidentified* to your editor.

After fifteen minutes and 30 blocks of in-town travel the site was found. It's in the second block of South Prince St. The Gingrich wagon was facing north in front of #121, now the home of MANOS. (Prince St. then had 2-way traffic) Manos, Spanish for "hand", is the home for drug and alcohol rehabilitating juveniles.

The building was formerly the Sullivan Funeral Home. In 1904 the address was the home of the Rhoads family; in 1919 it was a Kraus family. Their neighbor to the north, at the corner of Prince and Vine has always been St. Mary's Catholic Church. Originally a log cabin in 1742, the present gothic edifice was built in the early 1850s.

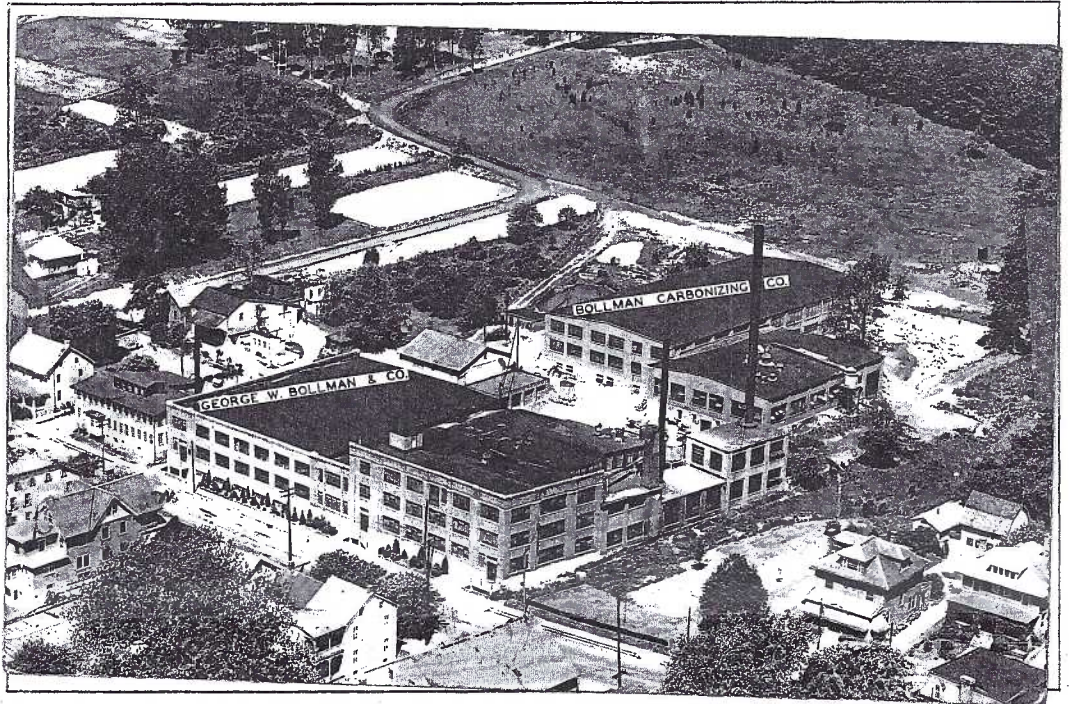
So the caption, including Gingrich's ownership of the wagon as well as his garage location remains correct. But the precise view stands corrected.

Thanks Jim and Darlene.

In the News

Hats On ! to Adamstown Village Serves USA Olympic Committee Five Years Running

Photo below is from the Lancaster New Era. A few of the 1,800 "outback" style hats are seen on U.S. athletes at the Sydney Olympic Games in September. The unisex chapeaus sport navy blue leather bands to match the navy blazers.



The little Lancaster town that lies along the border of Berks County has been associated with hats for nearly 150 years. Strangely, there are no printed postcards of Adamstown's hat industry and only a few real photo like the one above. It's a splendid aerial of the George W. Bollman & Co. hat factory and neighboring Bollman Carbonizing Company. It was likely taken in 1949 or the early 1950s.

Wool-felt hats and fur-felt hats have been the key industries of Adamstown since pre-Civil War days. The town has had no less than six hat manufacturers. As you know, felt hats have been passé for the work-a-day American for the last 50 years. Fur felt left the scene near the turn of the century. Wool felt hat factories had peaked in 1919 with 40 across the USA. By 1931 there were only nine. In 1948 only five remained: in Greenville, AL; Amesbury, MA; West Upton, MA and Adamstown and Denver, PA. Today only Adamstown and Denver still have wool-felt hat companies.

After acquiring the Adamstown Hat Co. in 1980, Bollmans were producing 381,000 dozen men's hats annually and nearly 190,000 dozen women's hats. In the last 20 years production of western and ladies' hat bodies has increased, particularly western hat production. Unique orders such as those placed for the last five Olympic teams are a specialty of Bollmans.

An unusual feature of the Bollman operation is the carbonizing plant where wool is scoured and cleaned for not only hat felt but flat felt, industrial felt, piano felt and decorative felt. Vegetable matter (seeds, grass, etc.) that clings to the wool is crushed, dusted off and then the wool is washed. The 50 employees in this branch of Bollmans clean five million pounds of wool per year.

The company, led by a team of college-educated officers now employs about 100 at their San Marcos, Texas plant plus 600 men and women at Adamstown. Nearly 100 having worked there more than 25 years. Johnnie Brossman will receive his 65-Year Pin at Christmas. Hats off...and on, to Johnnie and the Geo. W. Bollman Company!



Sure is a Small World

From Charlie Ezren comes this note, "Several years ago I purchased a group of over 1,000 Pennsylvania church postcards from a David Aaronson. He was somewhere in NC in retirement. This card (LCPC's 1990 Willows Bridge) he sent with them since it as of the Lancaster area. Sure is a small world."

The Willows Bridge card was sent to David who then lived in Sparta, NJ. It's cancelled Jan. 1991. "Happy New Year! Thank you again for your note and 2 copies of PC Collector. This is the first postcard by our Lancaster County PC Club. I was elected president for 1991. Should have my head examined for accepting the position. Best wishes. Earl Carver"

We're grateful Earl served that second year of our childhood. Forget the head examination, Rev. Carver; we enjoy your wealth of jokes.

Earl celebrated his 80th birthday in Sept. and appeared, with trombone, in a huge 50" story in the Lancaster New Era with mentions of LCPC, of course! A few days later he was awarded the New Era Red Rose for his active ministering inside and outside the church since his retirement. "A merry heart does good like medicine."

From a group (set?) of eight cards copyrighted in
1907 by D.Hillson we found these humorous epitaphs:

AT REST BENEATH
THIS SLAB OF STONE
LIES STINGY
JIMMY WYETT.
HE DIED ONE MORNING
JUST AT TEN
AND SAVED A DINNER
BY IT.

WITHIN THIS GRAVE
DO LIE
BACK TO BACK.
MY WIFE AND I,
WHEN THE LAST TRUMP
THE AIR SHALL FILL,
IF SHE GETS UP
I'LL JUST LIE STILL.

SOME HAVE CHILDREN,
OTHERS NONE.
HERE LIES THE MOTHER
OF TWENTY-ONE.

BENEATH THIS STONE,
A LUMP OF CLAY,
LIES ARABELLA YOUNG,
WHO ONE THE TWENTY-
FIRST OF MAY,
BEGAN
TO HOLD HER TONGUE.

UNDERNEATH THIS
PILE OF STONES
LIES ALL THAT'S LEFT
OF SALLY JONES.
HER NAME WAS LORD
IT WAS NOT JONES
BUT JONES WAS USED
TO RHYME WITH STONES.

LISTEN,
MOTHER, AUNT AND ME
WERE KILLED,
HERE WE BE.
WE SHOULD NOT
HAD TIME TO MISALE,
HAD THEY BLOWN
THE ENGINE WHISTLE.

HERE LIES ONE WOOD
ENCLOSED IN WOOD,
ONE WOOD WITHIN
ANOTHER.
THE OUTER WOOD IS
VERY GOOD.
WE CANNOT PRAISE
THE OTHER.

HERE LIES JIM SHAW,
ATTORNEY-AT-LAW.
WHEN HE DIED
THE DEVIL CRIED
GIVE ME YOUR PAW,
JIM SHAW,
ATTORNEY-AT-LAW.

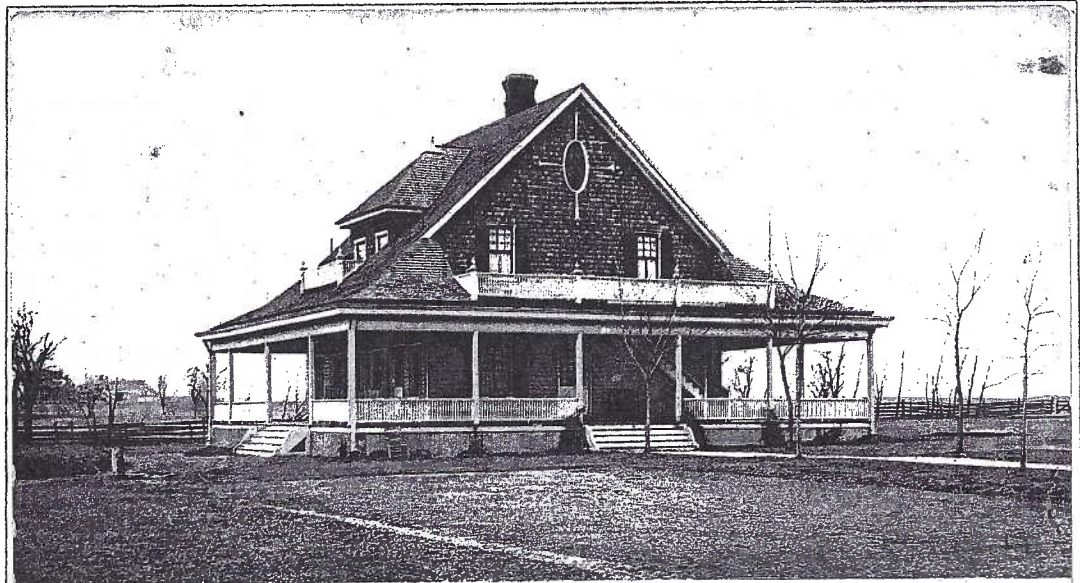
HALLOWEEN GREETING

Local Homes

- 1 Brubaker's Elysian Bower
- 2 Hostetter's Mondamin Farm
- 3 Keiper Home
- 4 Burton Home
- 5 Raub Home
- 6 Shirk Home
- 7 Worrest Home

8 Old Country Club becomes home for the Brubaker family.

The old Lancaster Country Club building still stands on a large lot at 643 Juliette Ave. across from Lancaster Catholic High. Since 1942 it's been home to two generations of the Brubaker family. The 12-room house was large enough for additional apartments according to Ronald J. Brubaker who recently sold the property. Sept. 2000 photo shown below.

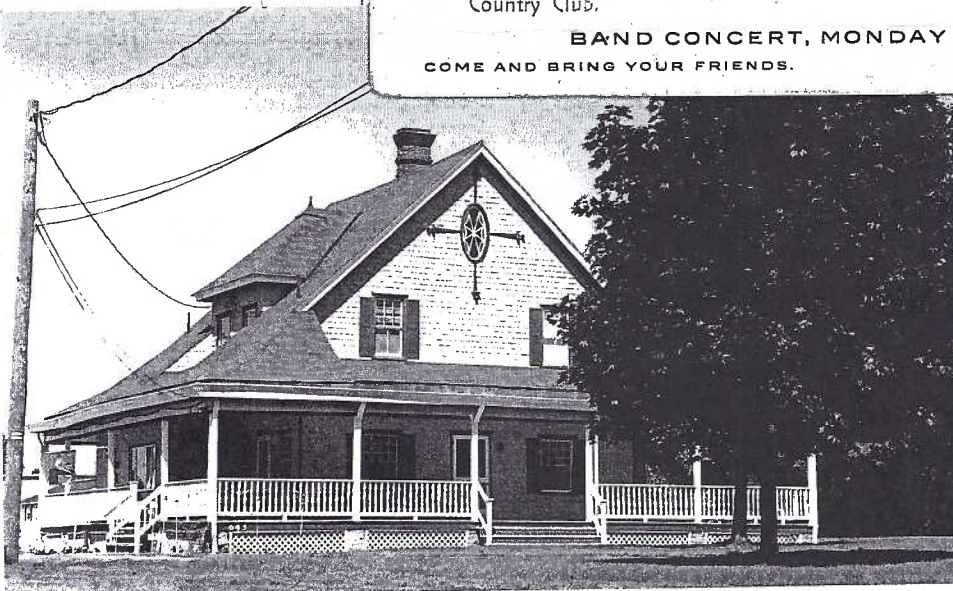


Country Club.

Lancaster, Pa.

BAND CONCERT, MONDAY EVENING, JULY 1ST.

COME AND BRING YOUR FRIENDS.



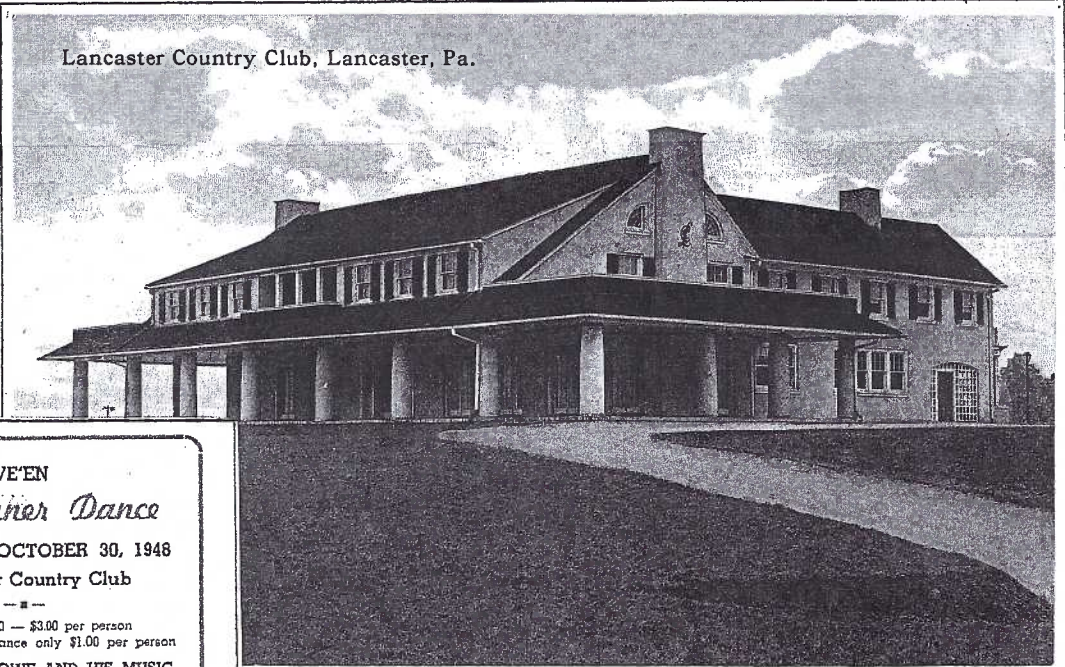
CT Co. #R-46975 (illus. below) shows their present home on the New Holland Pike as it looked 85 years ago. #107935, a white border type, publ. by CT in 1926, shows the LCC and golf links.

LCC used *postal* cards as reminders of special events. A small group we've seen incl. speaker Maude Draper('37), The Shippen School Alumni Banquets('39,'40), Swimming Exhibition by Jack Keelen('41), John Hussey's Swimming Classes('47), Golf Tournament('47) and the 1948 Halloween Costume Dinner Dance (illustrated).

The PC illustrated is in color with an undivided back. The band concert reminder was sent to Chas. M. Reiling in Lancaster. It is #A- 6694, published by The American News Co., NY and printed in Leipzig. ANC also publ. #A 1954, same view, but in b/w. A third view, in color, #A-14368, is a d/b order placed in late 1907 or early 1908 to the Curt Teich Company.

On a related note, in the spring of 1914, Lanc. Country Club had placed another order to

Lancaster Country Club, Lancaster, Pa.





HALLOWE'EN

Costume Dinner Dance

SATURDAY, OCTOBER 30, 1948

Lancaster Country Club

— — —

Dinner 8 to 10 — \$3.00 per person

Those wishing to dance only \$1.00 per person

GEORGE MARLOWE AND HIS MUSIC

Dancing from 9 to 1

Please make reservations on or before Thursday, October 28.
Those making reservations will be held responsible for same.

LCPC AUCTION #30

Monday, October 16, 2000

All lots are postcards unless noted. Descriptions are the sellers'. Potential buyers should arrive early and examine the lots carefully. Sellers must wait until the auction is over to collect their receipts less 10% for the club. No checks will be mailed. We have volunteers. Make their jobs as easy as possible.

6 - 150th Anniversary Lutheran Church, Geigertown, PA. (donated by Sandra Smale)

- 1 10 Stamp files for stamp sheets
- 2 4 Vols- Scott 1979 Standard Postage Stamp Cat.
- 3 Few hundred used postcard sleeves
- 4 15 Diff. Pa. Academy of Fine Arts (1 non-PC)
- 5 4 Diff sets 19 postal cards, Gt. Britain
- 6 2 Montgomery AL by Adolph Selige
- 7 2 Humor
- 8 Set of 18 New York Worlds Fair, 1939
- 9 4 Different add-ons
- 10 75+ Foreign and domestic

- 11 15 Clocks, watches
- 12 15 Flowers
- 13 15 Fountains
- 14 15 Sheep
- 15 15 Skylines
- 16 15 Stained glass
- 17 15 Sunsets
- 18 15 Verse
- 19 15 Water scenery
- 20 13 West Point Military Academy

- 21 6 Moose Home, Lancaster
- 22 6 France - soldiers, girls
- 23 4 Best Wishes
- 24 4 Lititz
- 25 4 Diff. Saal Sisters house, Ephrata
- 26 Pushnik Diner, Lebanon, PA
- 27 40 Real Photo - people
- 28 Set of 6 colored bow valentines
- 29 18 Diff. Amish

- 30 5 Nu-Ace binders and 80+ pages
- 31 75+ World-wide views, A to G
- 32 75+ World-wide views, G to W
- 33 30 Rack/free cards
- 34 Mixture, cont. chromes incl. few locals
- 35 Good mix, standard size, many local CBs
- 36 Good mix, standard size, some local views
- 37 1970 Oberammergau set of 24 + Divine Redemption set
- 38 4 Halloween
- 39 4 Halloween

- 40 8 Diff. Elizabethtown, PA
- 41 4 Diff. Lanc. - Penn Square
- 42 4 Diff. Lanc. - King St.
- 43 4 Diff. Lanc. - Courthouse
- 44 4 Diff. Lanc. - restaurants
- 45 8 John Zaring (non-PCs)
- 46 Small album, 100 PA views, mostly chromes
- 47 Album, 222 PA views, mostly linen
- 48 Album, 220 views, greetings (fair-poor)
- 49 100 Assorted US views

- 50 30 Art
- 51 30 Animals
- 52 25 New Jersey
- 53 15 Lincoln
- 54 20 Military, ship cancels
- 55 10 World War II incl. RPs
- 56 Bag of US stamps
- 57 Bag of stickers, seals
- 58 25 Bridges
- 59 Shoebox 700+ mixed

- 60 8 Composers (b/w) by Stengel
- 61 6 Lee mansion (color)
- 62 5 Thanksgiving turkeys
- 63 5 Christmas robins
- 64 6 Dutch children (Walk-Over Shoes series)
- 65 6 Real Photo - Army engineers build bridge
- 66 Set (12) zodiac Weather Cards (non-PCs)
- 67 18 Double (36) views of early Pompeii life
- 68 Set (6) Christmas Madonna's
- 69 5 Bird birthdays w/laced edges

- 70 Set (6) Pre-historic Courtship
- 71 14 Tom Breneman program, 1945 by Kellogg
- 72 5 Early write-a-ways
- 73 Set (6) Haystack Lovers
- 74 Set (12) Postcard Collector Calendar, 1993
- 75 Set (12) same for 1992
- 76 Set (12) same for 1991
- 77 Set (12) same for 1988
- 78 Set (12) same for 1987
- 79 Set (12) same for 1986

- 80 Set (25) Harley Davidson motorcycles ('98)
- 81 150+ Used postcard pages, fit 3-ring binders

Thank you for your attendance. Please remember, **SELLERS MUST WAIT UNTIL PAYMENTS ARE MADE TO ALL BUYERS** before collecting receipts. Drive carefully. Watch out for ice.

Looking for more in postcard reading? These subjects and more than 25 illustrated cards can be found in the last issue of *The Journal of the Postcard History Society* - early history of the Jolly Jokers Postcard Club, Esperanto cards, a taste of Russia, strange Swiss Halloween (?) card, a Kirchner signature, children's Temperance PCs, the Harvard 11, a horse-drawn cleaning company wagon. *Most cards are for sale.* Each issue has a full color cover. Sample copy is \$1.50 and may be applied toward a year's subscription of \$6. Write: Jim Ward, 1795 Kleinfeltersville Rd., Stevens, PA, 17578, ph. 1-717-721-9273, e-mail - midcreek@ptd.net.