

THE CARD Vol. 12, No. 9. Issue 141. *Enjoying postcards through education and entertainment.*
Monthly publication of The Lancaster County Postcard Club, Lancaster, PA.
 Next meeting: Mon., September 17, 2001. Buy, sell, trade from 5:30 p.m. Meeting at 7 p.m.
 Club and Editor's address: LCPC c/o Jim Ward, 1795 Kleinfeltersville Rd., Stevens, PA 17578-9669 or midcreek@ptd.net.

Monthly publication of The Lancaster County Postcard Club, Lancaster, PA.

Next meeting: Mon., September 17, 2001. Buy, sell, trade from 5:30 p.m. Meeting at 7 p.m.

Club and Editor's address: LCPC c/o Jim Ward, 1795 Kleinfeltersville Rd., Stevens, PA 17578-9669 or midcreek@tpd.net.

Where You See This Sign
It's Genuine

CHICKEN IN THE ROUGH

CHICKEN IN THE ROUGH

1/2 FRIED CHICKEN
SERVED UNJOINTED
WITHOUT SILVERWARE

a tender delight

I'LL GLADLY
BE FRIED FOR
CHICKEN
IN THE
TOWN

REG. U.S.
PAT. OFF.

Shoestring Potatoes

World's Largest Cow

FLEXIBLE FLYER
THE SLED THAT STEERS
S.L. ALLEN & CO.
PHILA'D'A, PA.

Located on Lincoln Highway U. S. 30 at Exton, P

WALKER HOUSE

YOU WILL FIND
EVERYTHING HERE THAT
THE WORDS COMFORT
AND SATISFACTION IMPLY

TORONTO, CANADA.

OUR FIELD FOR BUSINESS
IS THE WORLD.

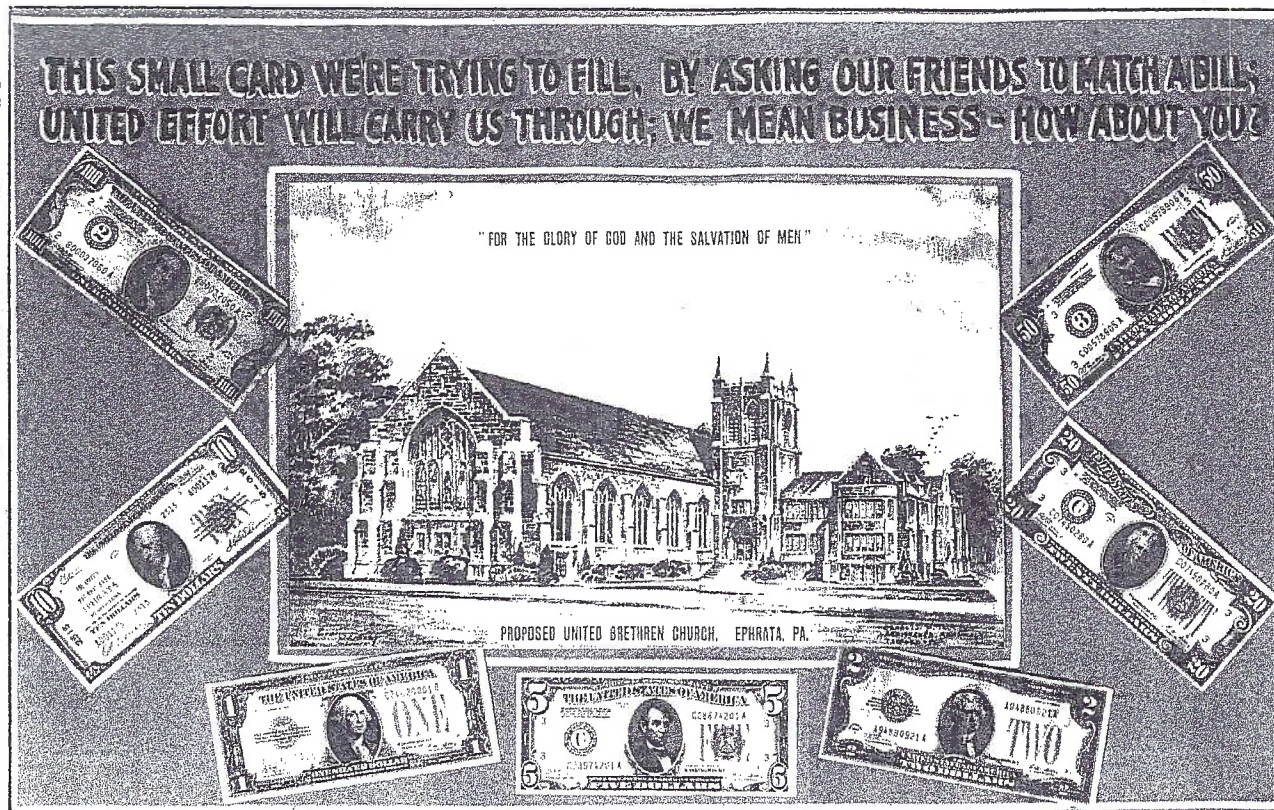
THE HOUSE OF PLenty
Geo. Wright - E.M. Carroll 1902

WALLACE MEMORIAL COUNTRY
STORES • ROSELAND, N. C.

BEN-HUR

UP-TO-DATE FEATURES OF TRAVEL

1966 AMBASSADOR by American Motors
990 Station Wagon • 990 Convertible • 880 2-Door Sedan



September Program

Our speaker in September is member #391, Kerry Wetterstrom. Kerry hails from Colorado but has lived in our neighborhood since 1987. His principle interest is in numismatics – the study of coins and currency. He has presently published *The Celator*, a nationally distributed magazine covering ancient Greek, Roman and Byzantine coins. Kerry had been president of the Red Rose Coin Club in 1998.

RRCC was founded in 1959. It has been meeting *twice monthly* in the same room where we meet at the Farm & Home Center. The public is always welcomed at the coin club's meetings where a program and auction happen every 1st Monday and every 3rd Thursday evening commencing at 7:30.

As a second interest, Kerry has begun a collection of bank notes issued by Lancaster County banks. These "nationals" were issued with the bank's name as well as signatures of the president and cashier. Of the 42 local banks, he has found at least one example of 39 of the banks. By the same token, he has just over half of these same banks on postcards! He'll show us, on slides, the bank postcards, their notes and a current photo if the bank still exists.

Nearly a dozen LCPC members are also RRCC members. Postcard and coin and currency collecting have parallel habits and interests. Kerry will demonstrate with his slide program how a focus on local history brings these two hobbies together. "Cross collecting" is not a new idea. This could be an avenue for *you* to pursue. You'll enjoy Kerry's program, I've heard him a several occasions. He knows his subject. JFW.

Postcard Necessaries

Pages \$14 per 100, 15¢ 20 or more
Sleeves \$1.50 per 100, 300/\$4 1,000/\$11
Continentials, Moderns \$2.50 per 100
Postcard Backs for Photos 10 for \$2
Jim Ward at Lanc. and York meetings
See e-mail or phone on masthead

The United Brethren Church of Ephrata published the real photo postcard shown above in the 1950's. It was distributed as a fundraiser and is quite rare. We've enlarged it to 125% so you can see the bank notes the church used. The \$10 note (left) is a National and includes the bank name as well as its chief officers. To comply with the laws of fifty years ago, the church kept the reproduced notes very small.

August Meeting

Sixty-five members attended in August and enjoyed a panel discussion on Postcard Use of the Internet. Panelists included Valerie Refi, Jere Greider, Mike Middleton and Bill Buckwalter. Their discussion centered on buying and selling, especially on e-Bay. The membership appeared attentive and questions were generally answered. It was a good idea concocted by VP Tom Beck.

Set up and selling were The Bishops, Bob Kramer, The Steinbergs, Gwyn Fulmer and family, Mike Middleton and Lewis Bechtold. Earl Carver and Bechtold won door prizes. Ray Bubb won the 50/50.

Programs for the remainder of 2001 are:

September – Local Bank Postcards and Bank Notes by Kerry Wetterstrom.

October – Member Auction. Contact Norman Zimmerman (354-5112) for the required form on which you list your ten (10) lots of postcards. This form and the cards must be submitted at the September meeting.

November – Hawk Mountain on Postcards by Shirley Bubb. As she did with owls, Shirley will be accompanied by a few feathered friends.

December – Annual Christmas Party (3rd Monday as usual) at Bird-In-Hand Family Restaurant. A \$16 meal with LCPC picking up \$11 of the tab. The evening concluded with a trip to the National Christmas Center where, again, LCPC picks of the lion's share of the tab. Jim Morrison, member #260, will guide us on the tour.

Cover Cards

Feedback on recent *Card* color covers has been very favorable – especially the Fourth of July set. Halloween cards are on tap for October. This month we'll side step the holiday theme. Actually, there are a few Labor Day cards - scarce, but few. The actual number of published Labor Day greetings wouldn't use all the fingers on your one hand, so – in lieu of the lackluster Labor Days, let's turn to the tantalizing world of Advertising, where color is far from wanting.

Top left – **Jackson & Perkins Co.**, Newark and New York, featured Blaze "the most popular of all climbing roses and is seen blooming all over America....plants are ever blooming." Major catalogues still feature Blaze, a prolific bloomer.

Top center – **Burger King** jumped on the Mod Art bandwagon (though a might late) on this 1972 "Where Kids Are Kings" card. The '70s are not an easy decade to find postcards. Worth remembering when your grandchildren inherit your collection.

Top right – **Chicken in the Rough** was the progenitor of fast foods beyond the burger binge. The national franchise had these PCs in all of their outlets. This one offered \$100 cash to "the first person who eats CITR in 25 separate restaurants listed on our place mat." At 50¢ a gallon, you'd still consume \$100 in gas trying to be the winner.

Center top left – S.L. Allen & Co., Phila. mailed this PC in 1908 to a Brunnerville, PA family reminding them to contact it with a **flexible flyer** order so Santa would know where to deliver it.

Center top right – This Mellinger, Lanc. PA published card is well known. **Exton Diner** on the Lincoln Hwy. was a favorite for miles around.

Center lower left – Sear, Roebuck & Co. advertising the **Ben-Hur** book (selling it for 48¢) and claiming it to be "a larger and better book than the \$1.50 edition."

Center lower right – Forty-four national flags add color to this d/b card from the **Walker House**, one of Toronto's finest hotels.

Lower left – Sometimes vanity surfaces when the boy in us seeks out a PC showing a car he owned in the distant past. Here it's the **Ambassador** ragtop, albeit the wrong color.

Lower right – Grandpap used this Chilton d/b to invite Anna in Hummelstown to come up to Milton, PA. The **American Express Co.** PC has multiple appeals – in category of currency as well as eight types of transportation.

Windows II

Month #2 Is Underway.

Club's Publication Due in August 2002.

At the August meeting nearly 100 local view cards were submitted for our second volume, *Windows to Our Past*. Jim Ward copied fronts and backs of cards on to work sheets. The sheets and cards were returned to the owners who will write up a brief description of the view and resubmit to the editing committee. Deadline for submitting your work sheets is November 30. You may bring your cards to the September and October meetings or contact Jim for an appointment to have your cards copied at his home. E-mail to midcreek@ptd.net or phone 721-9273 6 a.m. to 10 p.m.

Please check Windows, first book, to be sure your card hasn't already appeared. Also, unless it's a particularly unusual view, we'll probably not use the same subject in Volume II. Remember, there will be twice as many full-color cards needed this time, so

Expo 2002 – General Report

Attendance was down to about 400 for our 1-day show. This has been a national trend. Some attribute it to purchases on the Internet. Most of us, though, would prefer to see what we're buying first hand as well as to experience to camaraderie of two dozen dealers and lots of friends in the same room.

Business seemed brisk until the final hour. Dealers were pleased with sales that reflected the slight decline in attendance from previous years. We were, however, blessed with perfect weather.

As always, there was no lack of member-power when it was needed. Nearly two dozen showed up Friday at 6 p.m. Tables, chairs, exhibit boards and exhibits were in place and we were on our way by 7:30. The day of the Expo, the club kitchen staff and committee members began arriving at 6 a.m. Good food, a full-color program and distribution of the 2001-2002 Member Roster highlighted the day.

2001 Expo Exhibits

Working People

1st **Walter and Barb Mowrer** Poultry Farmer
2nd **Jim Ward** Vendors
3rd **Don Davis** Mining Coal
Earl Carver Wage Earners
Bob Kramer America at Work
Harold Moyer Harvest Scenes from
Around the World

Entertainment

1st **Jim Ward** Presenting – On Stage
2nd **Betty Beck** MM – Movie Star of the Millennium
3rd **Harold Moyer** Fun at Dorney Park
Don Davis Early Entertainers
Earl Carver Fun Time
Bob Kramer Let Me Entertain You
Brian Frankhouser Sunbathing Celebrities
Walt and Barb Mowrer Types of Entertainment in
Columbia and Marietta

Highways and Bi-Ways

1st **Harold Moyer** Lincoln Highway
2nd **Jim Ward** Ooga-Ooga! Beep! Beep!
3rd **Don Davis** Main Streets of PA.
Earl Carver Pennsylvania Turnpike
Walt and Barb Mowrer Pennsylvania Turnpike
Mike Middleton Along Highways of Old

Vacations

1st **Jim Ward** Barrels of Fun
2nd **Mike Middleton** Early Western Vacation
3rd **Bob Kramer** On Vacation – No Time to Write
Susan Glass Mount Rainier
Harold Moyer Vacation at the Beach
Brian Frankhouser Come to New Holland
Earl Carver Take a Vacation

Best of Show (chosen by judges)

Presenting – On Stage **Jim Ward**

People's Choice (75 ballots cast)

Come to New Holland **Brian Frankhouser**
First Prizes received \$15, Second - \$10, Third - \$5
Best of Show and Peoples Choice, each \$25.
Report submitted by Ruth Frankhouser

look for these as well. To avoid copyright problems, keep your views older than 25 years (will still allows for many chrome cards) unless you've received a release from the owner of the business or the publisher.

Cemetery Entrances

Any of you who collect Lancaster postcards would have been dumb founded as I, when I saw the photo at the right. It was labeled "Entrance to Lancaster Cemetery" and was one of dozens in a portfolio of city and county views published in 1892.

A trip to the Lancaster County Historical Society was in order. Had I more thoroughly searched the Historical Society's web site (<http://lanclio.org>), I might have found the answer right at home. They referenced a 1993 article in an LCHS Journal entitled "Rural Cemeteries" and it was on my book bench nearby.

The Lancaster Cemetery was created in 1848 by the German(First)Reformed Church. A \$10,000 chapel was erected at

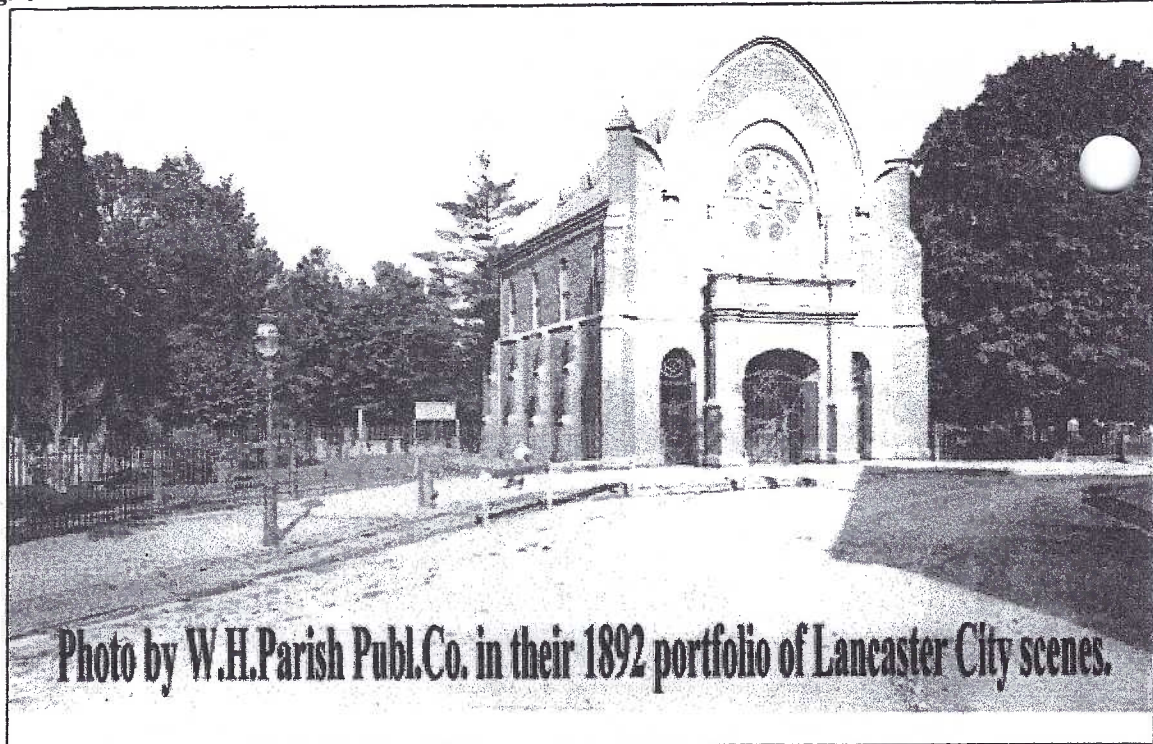


Photo by W.H.Parish Publ.Co. in their 1892 portfolio of Lancaster City scenes.

The 2-story Gothic structure at the Lemon St. entrance to the Lancaster Cemetery had a receiving vault and office on the ground floor, a chapel with rose window on the second floor. Did maintenance lead to the building's demise? Was the drive too narrow to accommodate newer vehicles? Or were funeral parlors' expanded services the reason for the building's demise?

The German Reformed Church found a need for developing a cemetery "outside of town". The ten acres it purchased between New Holland Avenue and Lemon St. was still undeveloped.

Trinity Lutheran Church followed suit by developing Woodward Hill Cemetery in 1851. Its original entrance on Strawberry St. was moved to the South Queen St. location seen on two postcards. One view is an undivided back by local merchant, H. S. Williamson; the other is a d/b view with three children seen through the Gothic iron gates, G2689 by The Rotograph Co.

Entrance to Lancaster Cemetery, Lancaster, Pa.



the main entrance in 1873. It was razed in 1903, before most of us were around and, with respect to postcards, before the golden age of PCs in the U.S.

Curt Teich printed the top card, left, for I. Steinfeldt. It's A-25088. This number places it in the C-T production schedule for 1911. The bottom view, by local photographer, Otto E. Weber (O.E.W. in lower left corner) was published by D. B. Landis. From the reverse Post Card logo, an educated guess would place it in D.B.'s early production of local views, c.1908-1909. Both cards have divided backs.

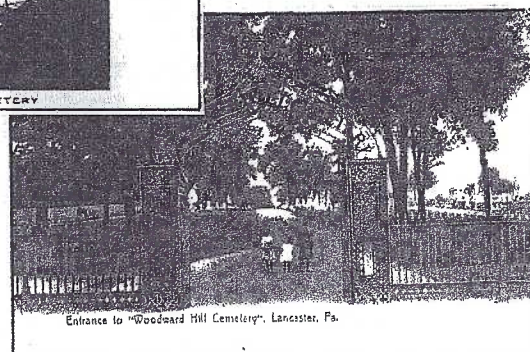
Why either of the local publishers would wait 5 to 8 years to print the newly created arched entrance to Lancaster Cemetery is not known. We can speculate - they both found many other scenes of the city more inviting (more marketable) than a cemetery entrance.

Lancaster had undergone a population explosion in the mid 1800s. From the 1830 to 1860, 7,700 people had mushroomed to more than 17,000! Neighborhoods were expanding. So were cemeteries.



Landis card of the Lancaster Cemetery Entrance has initials of photographer Otto E. Weber (O.E.W.) in lower left corner.

The original entrance to Woodward Hill had been on Strawberry St. This Rotograph d/b view shows the new entrance on South Queen St.



In Memoriam

It is with great sadness I must report that Daisy Schaeffer, LCPC member #2, passed away on August 5. Dede contacted your editor at 7:30 that morning and said her mother's 75-day ordeal in Intensive Care had come to an end.

Daisy was a loving and supportive mother and wife. She was regular fixture at national shows and in more recent years, at shows in our area. Many years ago she was quick to catch on to her little girl's new hobby of postcards and Daisy encouraged and nurtured Dede's interest in cards with special emphasis on art and illustrators.

Their frequent trips to Europe 30 years ago, netted a plethora of rare, exquisite Santas that we were honored to have featured at our meetings.

Our heart-felt sympathy is extended to Dede and we trust she will continue to be active in her chosen avocation – keeping us happy with fine postcards.

Ailing and Better

We were saddened to learn that Jake Fisher has been subjected to cancer and we pray he will make a speedy recovery. Cards can be sent to his home and Pauline will hand deliver them in case he's not there when they arrive. Check your new member roster.

John Rodkey, we've been told, is recuperating from broken bones. No further details.

It's good to see Harry Lines back on his feet and attending meetings and shows after surgery. That's always a good sign. Ruth has a full time job keeping him out of trouble.

Tom Beck will go to any length to make a point. We know you're Vice President, Tom. But you needn't hospitalize yourself and have stents inserted to prove you're a vice president! Good to see you were "in and out" and didn't miss a meeting = dedication!

New Members, etc.

First, several changes – **Mary Forrey**, #510, has returned to Lancaster County and is making Landis Homes, 1001 E. Oregon Rd., Lititz, PA 17543, her new home.

Busy **Joe Epler**, LCPC #54, has renewed his membership but just missed this new roster. He's still at RR #1, Box 281, Northumberland, PA 7857. Ph. 1-570-473-3466. He collects college girls, college pennants, mascots and Northumberland County.

#601 **Charles Williams**, 115 N. 13th St., Columbia, PA 17512. Ph. 684-8516. General collecting interest.

#602 **Marlene Gentzler**, 2337 New Holland Pike, Lancaster, PA 17601. Ph. 656-6514. Likes cats, postally used cards of Greenland and Iceland.

#603 **Joe Stehman**, 902 Locust St., Columbia, PA 17512. Ph. 684-8552. Collects Columbia, PA.

#604 **Jeannine Coup**, Box 348, Leola, PA 17540. Ph. 656-7855. Collects Lancaster City and County.

#605 and #606 **Ralph and Emma Shank** 29 Oak Hill Drive, Paradise, PA 17562. Ph. 687-7373. Likes Lancaster County but esp. the eastern end.

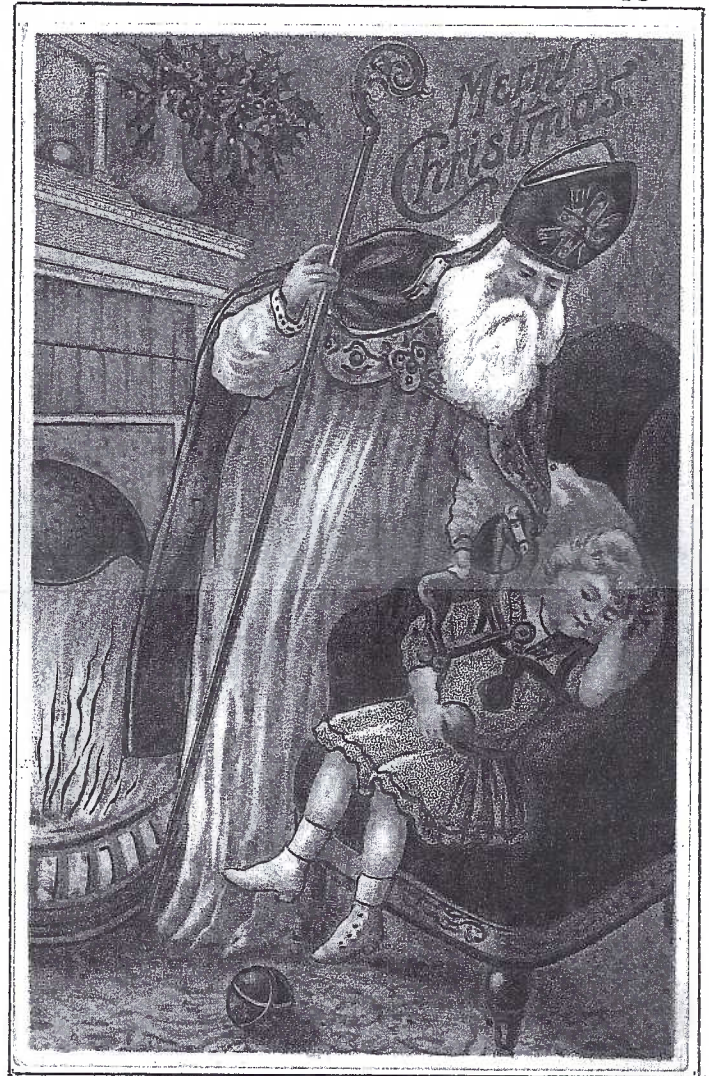
#607 **Charles Seaman** 48 Dogwood Ct., Safety Harbor, FL 34695. Ph. 727-726-1966. Collects Tuck views, both US and foreign as well as PFBs, cards by Paul Finkenrath, Berlin.

Future Shows

Sept. 7-8 **Mt. Laurel, NJ**. John McClintock's 22nd semi-annual show at Days Inn.

Sept. 16 **Wind Gap, PA** Lehigh Valley Post Card Club's Show in Plainfield Twp. Fire Hall.

Sept. 30. **Burlington, Ontario**, 16th annual Golden Horseshoe Show in Central Arena.



#608 **Doris "Maggie" Zwolenski**, 71 Boardman Ave, Cumberland, RI 02864-3704. Ph. 401-658-2812. Likes Snoopy and Peanuts, northern RI incl. Cumberland, No. Smithfield, Smithfield, Scituate, Matunuck, E. Matunuck and the beach areas in Narragansett, RI, also Mt. Clemens, MI street scenes and downtown; roosters and North School, Congress St., Portland ME. Maggie is President of the RI Postcard Club.

#609 **Miriam Bishop** 750 Hillcrest Rd., York, PA 17403. Ph. 854-4605. General interest. (It appears the right reverend retired Dick Bishop, #226, is finally letting Miriam out of the house. And Norman and Ethel Zimmerman are no longer holding up the rear end of the alphabet thanks to Maggie.

Monthly Postcard Competition

Topic – Famous People (single card)

1st **Don Jumper** Will Rogers

2nd **Tom Beck** Thaddeus Stevens

3rd **Ruth Moyer** The Beatles

Honorable Mentions: **Jim Ward** The Other Dionnes,

Gwyn Fulmer Billy Sunday, **Susan Glass** Annie

Oakley, **Harold Moyer** Dinah Shore, **Betty Beck**

Marilyn Monroe, **Earl Carver** Mozart, **Don Davis**

Pres. Roosevelt & Family, **Bob Kramer** Billy Carter,

and **Gisela Withers** Unser Kaiserpaar.

Future Topics: Sept.- Letter D (board); Oct – Black

Cats (card) Nov. – Letter T (board); Dec. – Stockings

or Fire places (board)



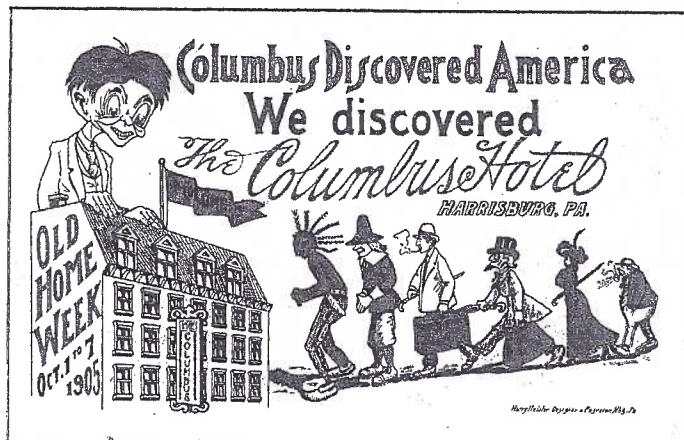
Clay, PA

Sept. 9, 1913

Peach season is upon us and this Peach Party (penciled in on the upper right) is a "type" card of Lancaster County - 70 years ago. "At last your basket is finished and you can fetch it any time. Only on the 14th this month I am going to the family reunion to Orwigsburg. Wish you would go along. Your cousin, Annie."

Annie Borry, according to Dot Fry (has anybody seen her at a meeting lately?) might have taken this real photo PC picture. Annie made baskets (not the kind you see in the photo).

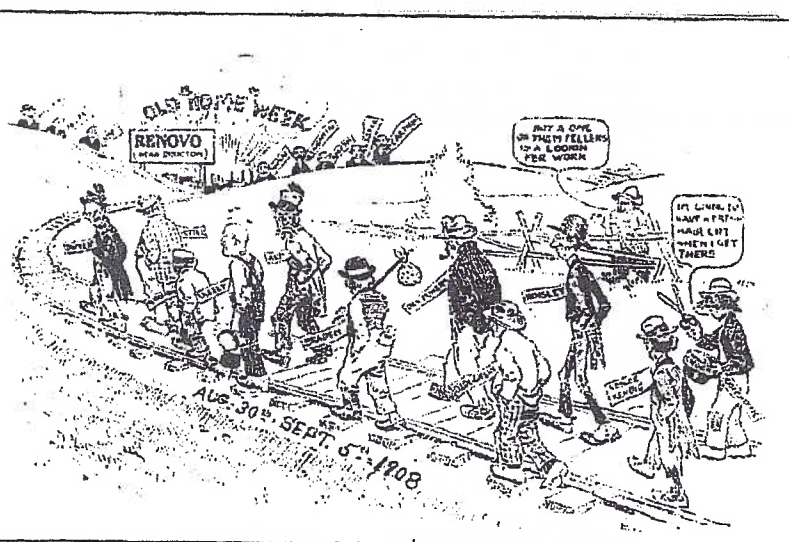
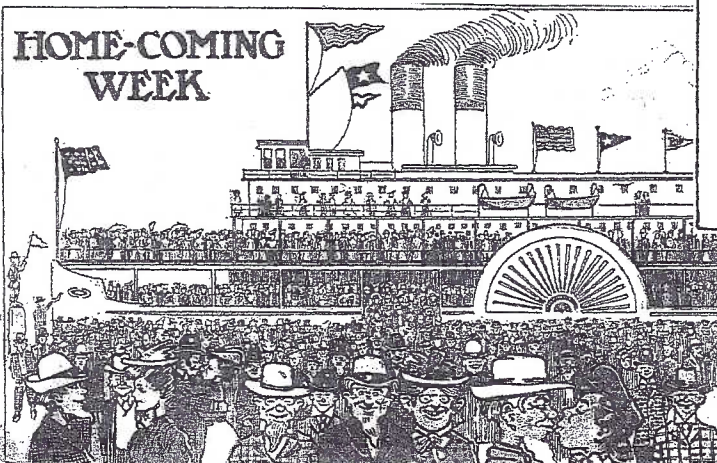
Joe Borry, a bachelor (front row, second from left) had a farm near Clay. To his left is Ed Wilson, a neighbor. The little boy is Edna George Althouse. Joe's younger brother, Jimmy, is top left. The four adults to the right may have been buyers of Joe's peaches.



Old Home Week

Here's a collecting category that seldom gets bigger than a card or two. Most people collect only OHW cards of their towns or neighborhood.

The two top PCs are undivided backs from Harrisburg, PA. The Patriot Job Printing Co. (right) used theirs to solicit business. The 1908 Renova card (lower right) has nametags hanging from the line-up. The farmer's observation, "Not one of them fellers is lookin' fer work." The steamboat (below) hauls in enough warm bodies to double the size of Buffalo, NY from which it was mailed.



Aside from the big parade, Old Home Week was a chance to wallop on old adversary across the shoulders in the name of nostalgia, to imbibe more than the frau allowed you at home and to generally raise the devil because it was "your old stumpin' grounds" and you laid claim to it from birth, even though you've been away for two generations.