

If at midnight with a pumpkin light
You steal to your room unseen
In the mirror appears the face,
Of your lover true, on Hallowe'en



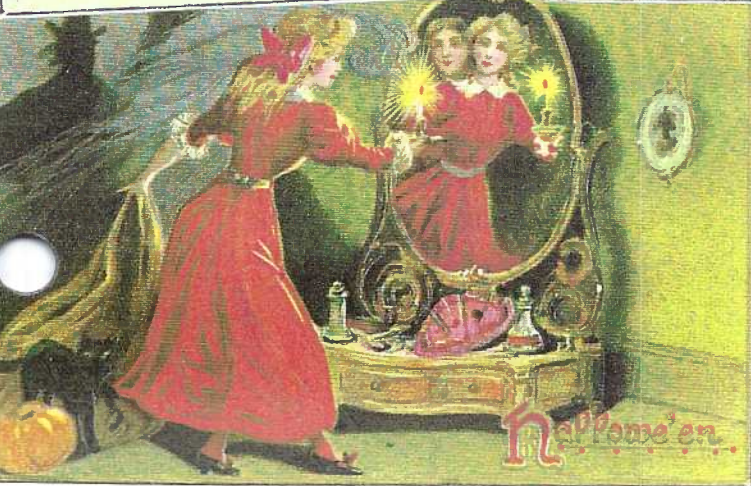
Don't be afraid, for on Hallowe'en
If you take a lighted candle and a mirror clean
At the stroke of twelve, look in and there's seen
The face of your lover, that I ween



"If in the mirror your lover is seen
You'll surely be happy on Hallowe'en!"



HE IS YOUR FATE
WHO'S FACE YOU'VE SEEN
IN THE MIRROR'S FACE
ON HALLOWE'EN



Halloween Mirrors

9-11-01

On a Detroit published view of the Flat Iron Building (Height 286 ft) in New York City, there is stamped on the message side, "This is to keep Skyscraper Day in your mind. Don't forget this is to be the days of days. W. J. F."

Do any of our members ever remember hearing of Skyscraper Day? And who was W. J. F.?

The PC was not mailed. The #7109 suggests it was first made in 1903, however, the divided back tells us it was a later printing of the early view - after 3/7/1907.



When THIS GENTLEMAN, takes off his coat - he means business.

Illustrated Postal Card and Novelty Co., NY, is responsible for the timeless rendition of Uncle Sam.

Monthly Exhibits

73 members attended the Sept. meeting. The theme of the boards was the letter D.

1st Harold Moyer Denver

2nd Jim Ward Delft Tiles

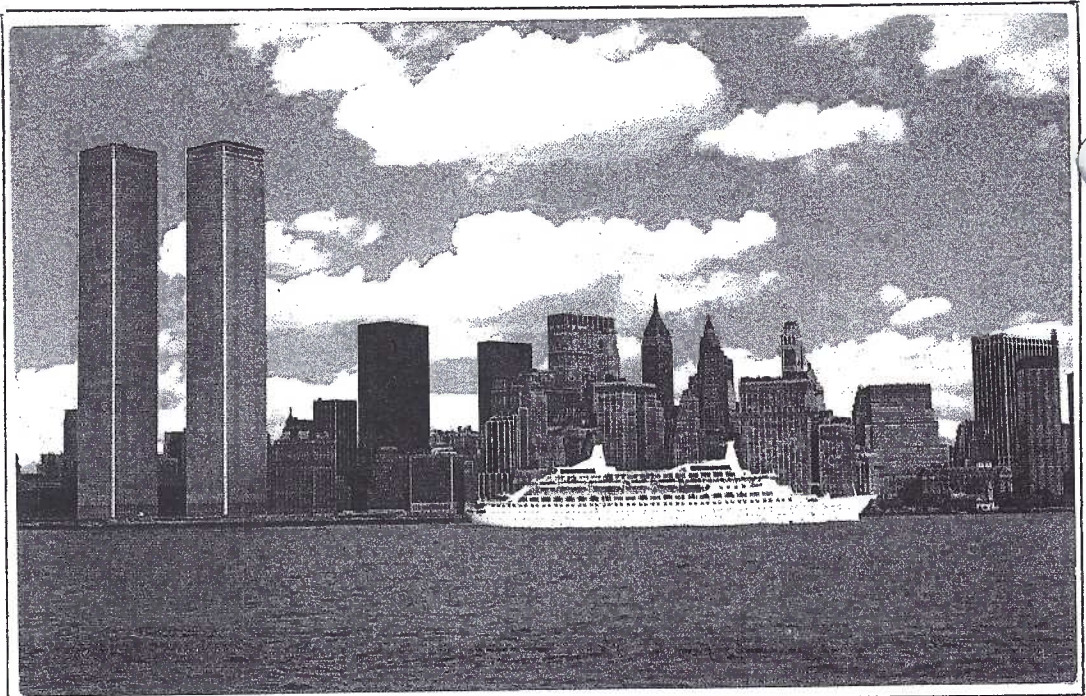
3rd Bob Kramer Dachau

Honorable Mentions: Ruth Moyer Dogs and Their Friends; Don Davis Depots; Susan Glass Big D; Earl Carver Delaware Water Gap.

October: Black Cats (one card).

Notice

Please limit your views for Windows Two, to six (6) cards if you bring them to the Oct. meeting. If you have more (and we can use them) make an appt. with Jim Ward. Final deadline for submitting completed Work Sheets is the Nov. meeting.



The Mirro-Krome view, above., was printed in the 1970s by H. S. Crocker Co., Inc. of San Bruno, CA and Nester's Map & Guide Corp. of NYC was the publisher. It reads: A spectacular view of the World Trade Center. A complex of buildings including two huge towers 110 stories high - the tallest buildings in New York. Photo by Al Orsini.

LCPC AUCTION #31

Monday, Oct. 15, 2001

All lots are postcards unless noted. Descriptions are sellers'. Potential buyers should arrive early and examine lots carefully. Sellers must wait until the auction is over to collect their receipts less 10% for the club. No checks will be mailed. We have volunteers so please make their jobs as easy as possible.

- 1 50+ used 4-pocket pages for postcards
- 2 4 cards "Your Future Partner". Non-PC backs
- 3 Morton Salt blotter
- 4 Rhoades Soft Ice Cream & Amish Gift Shop, Rt.#30
- 5 2 u/b German cards, 1899 and F&M PSK LaPark, PA
- 6 10 Horses by Alfred Mainzer. Un c
- 7 7 Diff. by The Rotograph Co., u/un ub/db
- 8 14 Publ. by Valentine & Sons, u/un/ early
- 9 7 Publ. by Winsch u/un db/wb
- 10 7 Publ. by Hugh Leighton 6 ub un, 1 db u

- 11 Shoebox full; mostly continental size
- 12 10 continental size sports stadiums, unused
- 13 24 Lancaster County views, mostly city
- 14 8 Ethnic related postcards, used, unused
- 15 12 Early 1900s government postals, cancelled
- 16 24 Penna. Turnpike, used and unused
- 17 10 fringed greeting cards
- 18 24 Columbia Auto Co. reminder cards (non PC)
- 19 50 used 4-pocket pages for postcards
- 20 100 used 4-pocket pages for postcards

- 21 Dr. Alexander - Marietta trade card, 1893 Expo.
- 22 H. L. Boas, N. Queen St., Santa trade card w/faults
- 23 Original 1929 Rieker Brewery lg. photo at 554 W. King St. (people identified)

- 24 27 Foreign + 1 folder; all have stamps
- 25 20 Birds - parrots, ducks, all kinds
- 26 22 State capitols, all different, all PC eras
- 27 29 Jumbos - ads, racecars, planes, amusements, etc.
- 28 30 Long cards, mostly motels, some interiors
- 29 175+ 2 folders - views, greetings, all PC eras
- 30 12 A. Lincoln - portraits, homes, monuments, tombs
- 31 10 New York Worlds Fair, 1964-5, plus 1 folder
- 32 31 Art, paintings, sculpture, 3 are non-PC
- 33 1 Rare philatelic related PC - cancelled 1/1/01

34 9 Outhouses

- 35 6 Columbia + 4 Elizabethtown Masonic Homes
- 36 7 Gettysburg + 5 Lebanon
- 37 5 Lititz + 3 Marietta
- 38 6 Millersville + 6 Myerstown
- 39 7 Reading + 2 Willow Grove

- 40 90 Lancaster city in 4-pocket pages
- 41 119 Lanc. City as above
- 42 116 Lancaster city as above
- 43 89 Lanc. City as above
- 44 90 Lancaster county as above
- 45 90 Lancaster county as above
- 46 180 Amish, etc. as above
- 47 162 Amish, etc. as above
- 48 96 Hershey and York as above
- 49 91 Maine and more as above
- 50 36 Misc. views + 4 folders (2 Lanc.)

- 51 Lanc. - Interior Bair & Witmer, new store
- 52 Lanc. - St. Anthony's Church, Rt. Rev. Msgr. Kaul
- 53 Lanc. - Largest antique stein collection in/world
- 54 Lanc. - Hamilton Watch 1912 convention, Erie
- 55 Lanc. - RP boating on Conestoga at People's Park
- 56 Lanc. - Florence Taylor tinted art - Wheatland
- 57 Lanc. - F&M 1968 football champs w/'69 schedule
- 58 Lanc. - Lancaster Lanes Bowling Center
- 59 Lanc. - YMCA cafeteria interior
- 60 Lanc. - Trolley on N. Duke St. next to courthouse



Halloween Cover Cards, etc.

Halloween teems with superstitions. One involves mirrors. With apologies to our readers who love post-card children, we center our attention this month on young ladies and a theme involving mirrors -

To see your future husband. Retire into a dark room with but one lighted candle. Place the candle in front of a mirror and peer into the glass. At the same time, you must either be eating an apple or combing your hair. After a few moments, the face of the man to whom you will wed will appear in the mirror over your shoulder.

Our cover cards, as well as those on this page, are all variations on the theme, **Halloween Mirrors**. Enjoy them for their beauty and throw the superstition and mirrors out the window.

Cover, left to right, top to bottom:

E. Nash publisher, series #2

S. Garre series with Ellen Clapsaddle art

M. L. Jackson publisher, "Don't" series

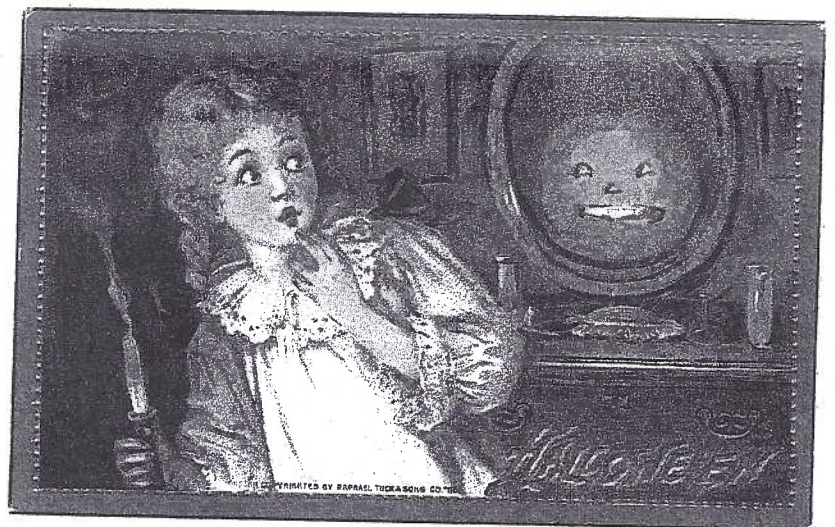
Stecher publisher, series #216

Gottschalk, Dreyfuss & Davis Co. publisher

Leubrie & Elkus series 2272 with H. B. Griggs art

Tuck publisher, series #150

E. C. Banks artwork on unidentified winged publ.



This page, left to right, top to bottom:

Geo. C. Whitney published series

Metrocraft publisher, series #363

Tuck publisher, series #174

Tuck publisher, series #803

Unknown publisher, series #2215, art by H. B. Griggs



CONFUSING LOCAL VIEWS

Names – Locations – Dates

Many collectors of Lancaster views have found Lancaster College and Shippen School PCs and been bewildered by the similarity of some views. Different Lancaster College buildings add to the confusion.

With a map of the area and a few dates, we'll try to clear up the confusion.

Lancaster's YWCA, on the northwest corner of E. Orange and N. Lime Sts. faces on Orange St. at #149. Formerly the Shippen home was at this address. It's the building more frequently seen on PCs and referred to as the Lancaster College or Dormitory Building -

East Marion Street

Present IREX Corp.
(#129 N. Lime St.)

Former Shippen home
(#149 E. Orange St.)

North Lime Street

East Orange Street

In the two views on this page, you can see an extension along N. Lime St. forming the building into an ell. (See diagram above.) In the second postcard on pg. 5, that extension can be seen on a scarce card of the college.

So we have *two sections of the same building* (appearing like two different buildings, but all part of the Lancaster College, or less frequently captioned, The Shippen School (for Girls).

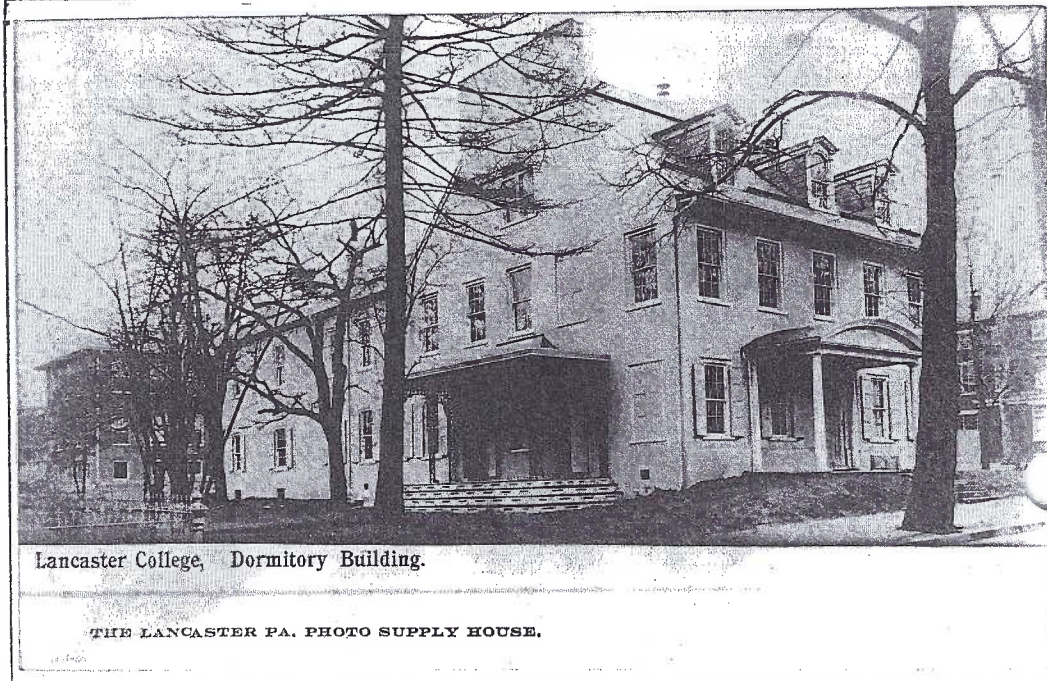
On these same two views, in the background can be seen a square-shaped 3-story red brick building. This was also part of Lancaster College and generally captioned Administration Bldg.

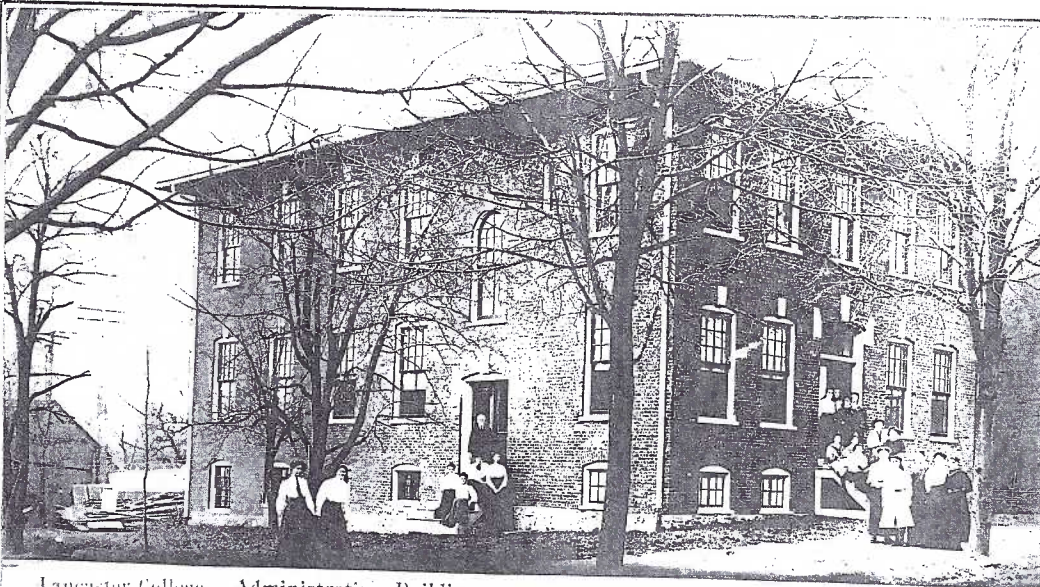


Undivided backs we've seen are captioned Lancaster College; divided backs exist with both labels. Notice on the top view, the writer has crossed out the obsolete caption and written "Now The Shippen School for Girls."

The Lancaster Photo Supply House cards are both u/b type. The Herr, Langsdorf and Valentines views are all divided backs.

This time frame may help for
#149 E. Orange Street:
1888 – home of Francis Shroder,
cotton mill entrepreneur
1907 – Lancaster College
1909 – Shippen School
1913 – YWCA





Lancaster College, Administration Building.

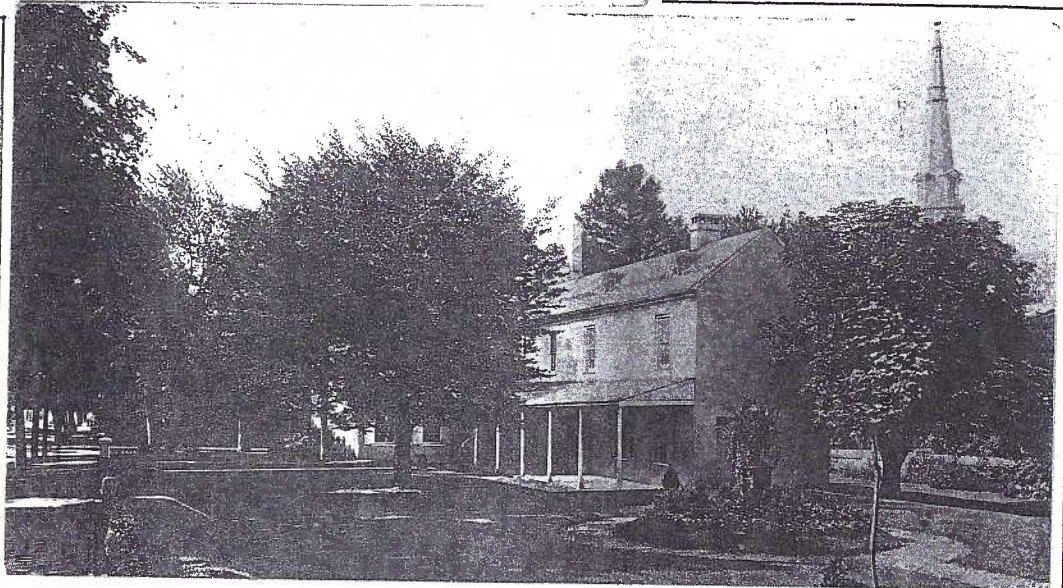
THE LANCASTER PA. PHOTO SUPPLY HOUSE.

Today, only this latter structure stands – at 120 N. Lime St., next to E. Marion St. It's the home of IREX, home office for a group of specialty contracting companies operating around the world. By 1919, this was the only home of the Shippen School for Girls, the YWCA having been built in 1913.

Top - #122 (later #120) N. Lime looking NW toward Marion and Chestnut Sts.

Center - Uncommon view showing ell extension behind Shippen home, extending along N. Lime St. the old Presbyterian church steeple in background.

Bottom - Scarce RP u/b view shows the Shippen home and the extension. The back has Post Card in gothic letters. It's post-marked at Southampton (Bucks County) PA, Oct. 12, 1908. (Ex Hi Doty collection.)



L. B. HERR PRINT

LANCASTER COLLEGE, LANCASTER, PA.

Wasn't it queer how our letters¹⁹⁰⁸ crossed? I was glad to hear from you again. I saw letter, thank you, and guess I'll soon be all right. - It still takes about all my time to do the few things I have to each day. I am 1 dm.



begin my lesson again. Lovingly
Kirkland on Sat & next Sat. I can hardly wait.

Thanks, Thanks, Thanks

Kerry Wetterstrom's program in September, Local National Banks - Their Banknotes and Postcards - was well received. We thank him very much for his presentation.

Norman Zimmerman kindly donated the door prizes at the September meeting. Thanks, Norm, and also for the effort you put into the annual auction for the October meeting.

Members – New and Old

Members **Claudia and Marlin “Bob” Erdman**, #142 and #143 have been reinstated. They live at 1200 6th Ave., N #2, Seattle, WA 98109-3431. Their home suffered a catastrophe and they were without their belongings and some mail for several months. We sympathize with them and are glad to have them home and back with LCPC.

New Members

#610 **Robert Dillon** 428 S. Penn Ave., Center Hall, PA 16828. Ph. 1-814-364-9140. General interest
#611, #612 **Linda and Everett DeWald** 2039 Millstream Rd., Lancaster, PA 17602. Ph. 1-717-367-2224. Local and outhouses.
#613 **Yvonne “Bonnie” Gable** 6341 High St., East Petersburg, PA 17520. Ph. 1-717-569-2528. Old Lancaster, architecture and bridges.

#614 **Dale Shaub** 3889 Sterling Way, Columbia, PA 17512. Ph. 1-717-285-7670. Amusement Parks and general interest.

In Sympathy

We are so sorry to hear **Jake Fisher** passed away on Sept. 5, after a short illness. It seems difficult for this writer to realize he's known Jake for less than two years. He and Pauline joined LCPC in April 2000. Jake was a skilled goat farmer. He collected all sorts of goat items and shared them with us in a fine program and through several exhibits. He was currently serving as an LCPC Director.

Jake was a 4-H advisor for more than 20 years and had established a Young Farmers Achievement Fund at the Farm & Home Center.

He was one of those fellows you wished you'd known for 17 years instead of 17 months.

We also extend the club's sympathy to the families of **Lee Cox** and **Ken Kolb**, both were popular dealers at our Expos.

Future Shows

Oct. 6 –7 Allentown, PA. Great Eastern Antique Book, Paper and Advertising Show. Fairgrounds.

Oct. 26 – 27 Timonium, MD. Monumental Postcard Club Show. Hotel Timonium.


Oct. 27 York, PA. Book and Paper Show. Fairgrounds.

Nov. 3 Belmar, NJ. Jersey Shore Post Card Show. John Taylor Pavilion.

Nov. 23- 24 Lancaster, PA. Morlatton Post Card Show. Farm & Home Center.



The Dressed Goat Parade and Goat Races are held every September at Falmouth, in northern Lancaster County. Here's a postcard-made-from-photo that brought an extra grin to Jake Fisher when he received it from your editor. Did the youngsters showing these kids win a prize for the Prettiest, the Best Couple or the Most Unusual?



WANTED
SHELL BORDER CARDS BY LANGSDORF

Needed to complete collection:

S9, S30, S56, S64, S67, S72, S74, S79, S96, S99, S103, S104, S105, S107, S116, S117, S129, S134, S155, S157, S167

David W. Kalles 24 Tamarind Drive, Key West, FL. 33040
Phone: (305) 294-3418 (nights 8 - 11 EST)
Fax: (305) 294-8182 E-mail: docdc@webtv.net

OOPS!

In case you didn't notice the error in last month's *Card*, check the cover and see if you can find the error before you read further below.

area, for bringing the error to our attention.
Thanks to eagle eye John Klein, who spent many hours at the Cow and Diner while living in the Exton Mall.
The big attraction in the neighborhood is gone now. Both the diner and the cow are with PA #100. Just north of the intersection, on #100 (here the Lincoln Hwy.) just east of the intersection most assuredly, The Guernsey Cow located on US #30 The Mellinger card showing the cow is,