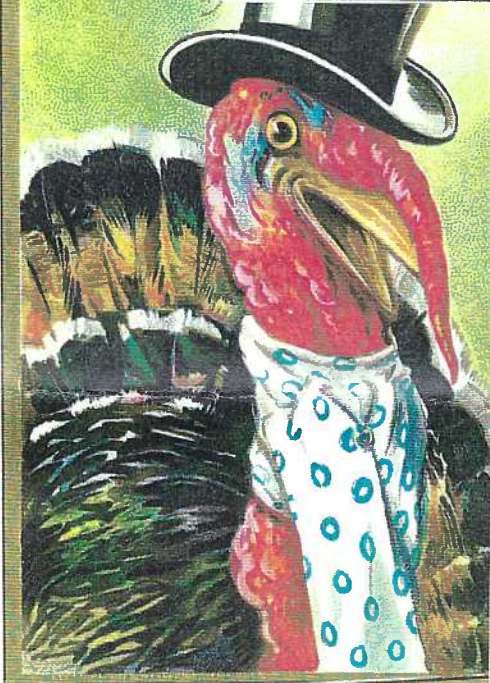


"O, JOY! BUCKETS OF JOY!
I GAVE THEM THE SLIP!"

Thanksgiving Day

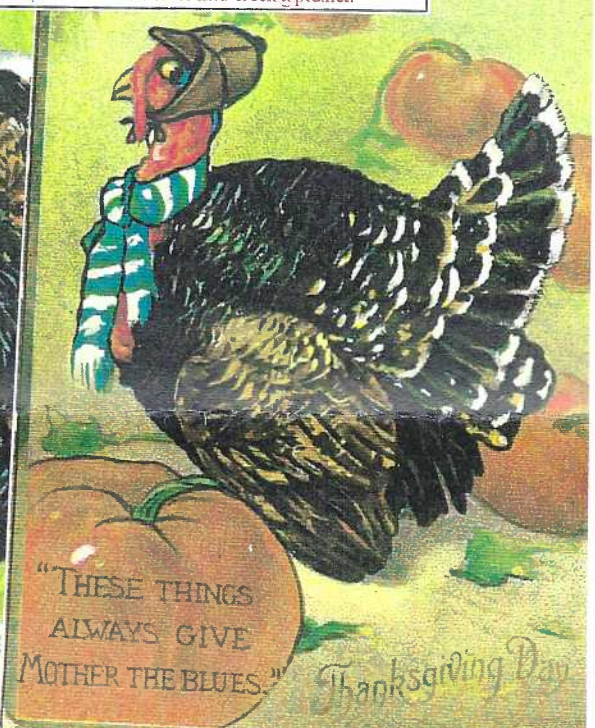
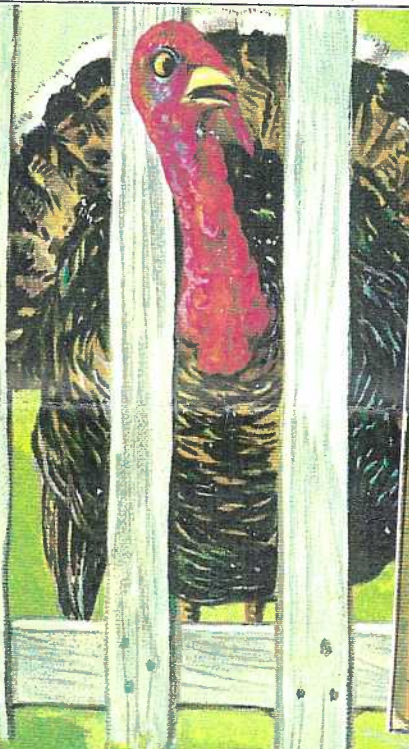


THE CARD Vol. 12, No. 11, Issue 143. Enjoying postcards through education and entertainment.

Monthly publication of The Lancaster County Postcard Club, Lancaster, PA.

Next Meeting: Mon., November 19, 2001. Buy, sell, trade from 5:30 p.m. Meeting at 7 p.m.

Club and Editor's address: LCPC c/o Jim Ward, 1795 Kleinfeltersville Rd., Stevens, PA 17578-9669 or mid-creek@ptd.net.



"THESE THINGS
ALWAYS GIVE
MOTHER THE BLUES." Thanksgiving Day

"I WONDER IF THEY ARE LOOKING AT ME
IN ADMIRATION OR SYMPATHY."

Thanksgiving Day



CRANBERRIES
ME FOR THE TALL TIMBERS

RESTAURANT



"O, yes!
I'M STARRED ON THE BILL ALL RIGHT!"

Thanksgiving Day



I'M GOING TRAVELLING

COVER POSTCARDS

Our cover this month is a set of six turkeys from Tuck's *Comic Thanksgiving Day, Series #162* – Top-hatter Tom is dressed to kill (top left); Tom can be sure “they looked in *both* admiration and sympathy” (top center); reminders of the impending feast (top right); Tom knows cranberries mean business, so he’s going to hide in the woods, “tall timbers” (lower left); the board-walker’s menu features Tom (lower center) and finally, lower right, Tom’s days are numbered.

CHRISTMAS GIFT from FLORIDA

We owe a great big THANK YOU to fellow member **Jo Jednacz**, P.O.Box 2066, Dunnellon, FL, 34430, for the beautiful Rick Geary card she gave us to enclose with everyone’s December CARD. Like many of us, Jo is an avid flea marketer, always looking for carousel postcards and related items. She and Tom and their granddaughter April were featured on a carousel PC she gave us previously. Speaking of donations, Jo also gave LCPC’s library, *Rural Delivery – Real Photos from Central PA, 1905-1935*.

Here’s a book we all deserve to give a few hours to this winter. It’s an excellent presentation. And thanks so much, Jo, for your thoughtfulness.

NEW MEMBERS

#615 Bob Epler P.O.Box 1168, Lancaster, PA 17608. Ph. 1-717-393-2546. Collects Lancaster city and county.

#616 John Blanck, 422 Orchard Ln., Manheim, PA 17545. Ph. 1-717-665-5618. Likes Manheim area incl. Elm, Penryn, White Oak, Sporting Hill, Mastersonville, etc.

Re-instated Members

#487 and 488 Reynold and Mary Sue Schenke, Box 59, Paradise, PA 17562-0059. Ph. 1-717-768-7208. Paradise area.

LCPC CHRISTMAS DINNER - MEETING

Dec. 17 Bird-in-Hand Family Restaurant. Each member and one guest just \$5 ea. Others \$16. National Christmas Center Tour following Christmas Dinner, each member and one guest \$3 ea. Others \$8. Sign up at the Nov. meeting or call Tom Beck at 627-7732.



Real Photo Postcards of Goat Race, Goat Parade

A few hours at the Falmouth Goat Races and Parade with Betty Weaver produced neat color photos. With a PC backing, random views are \$1 or 6 diff. for \$5 postpaid. Specify standard PC size or cont. size. Make check to Jim Ward. Address is on the masthead.

VINTAGE SANTAS

I have fewer quarrels with USPS than most people. The service is generally good, with the exception of picture postcards. They still receive 3rd class attention. This year’s secular Christmas postage is a se-tenant group of four vintage Santas. Good friend and Santa expert, Dede Schaeffer, has recognized, at this writing (Oct.), two of the four as old die cuts.

More important to deltiologists, USPS offers the same Santas as a set of 20 stamped picture postcards for \$9.25 – not bad considering the \$4.20 postage. The down side is they’re continental size. What isn’t these days?

Order at www.usps.com or write Stamp Fulfillment Services, P.O. Box 7247, Phila. PA, 19101. \$1 postage and handling is required on any size order.

This ‘n That

Carolyn Middletown won the 50/50 in October; door prizes went to Ruth Frankhouser and Ngoc Kreider. Set up and selling were the Steinbergs, Moyers, Yohes, Bishops, Middletons, Bob Kramer and Jim Ward. 73 members were present; a few left early, a few arrived later.

Norman Zimmerman along with Walter Mowrer, Valerie Refi, Ruth Moyer, Jere Greider, Bob Kramer, Harold Moyer and volunteer auctioneer Frey pulled off another successful auction. It grossed \$501 with 10% (\$50) going to LCPC’s treasury. Thanks to all for their help.

We’re sorry to hear Ruth Bair suffered a heart attack in August and hope she’ll be better and can enjoy the Christmas dinner with us. The same is true for Leo Frantz who spent some time in the hospital in October. Get better quickly, Leo!

It was so good to see long-time members Leona and Harold Rineer at the October meeting as well as Sally Danz and Vanessa. Sally’s younger daughter, Sherry, finished Navy boot camp and is now on the West Coast. Good luck, Sherry. Anchors Away!

Our local postcard season winds down in November. (See shows listed elsewhere in this issue.) Take advantage of a last chance to buy before winter sets in. Perhaps you’ll find a surprise present for a friend, maybe a new topic for yourself – to work on over the cold winter. Don’t forget to stock up on postcard sleeves and pages, too.

Details on signing up for our December Christmas Dinner will be forthcoming in the December CARD. Keep in mind it’s the Dec. 17 (third Monday). We will likely eat at 6 or 6:30 then, those who wish. will move on to the National Christmas Center where Santa Jim Morrison will welcome us to a complete tour. The \$24 night will cost our members and one guest each only \$8. We’re offering this Christmas gift from our profit on *Windows to Our Past*, Volume I, speaking of which, several “holes” are lacking for a complete visual history of Lancaster city and county for *Windows II*, so the committee may approach you for more postcards.

MONTHLY EXHIBITS

November found 13 single postcards exhibiting *Black Cats* – and the majority were *not* Halloween cats! Prizes to: 1st Jim Ward, 2nd Don Davis, 3rd Harold Moyer. Honorable Mentions to: Ruth Moyer, John Crull, Howard Steinberg, Bob Kramer, Mary Ann Guntow, Dede Schaeffer, Anne Steinberg, Susan Glass, Bill Guntow and Jim Ward. Cute and Curious won over an unusual Suffrage cat, comic cats by artists Arthur Thiele and Louis Wain plus several very scarce Halloween cats. All of which supports the theory that we’re evidently a club more interested in the Cute and Curious. (This is not the comment of Sour Grapes, as your editor’s cat nursing skunks won first place over far more deserving exhibits.) For November it’s a board and the subject is to begin with the letter T.

Library Team Forms In November

On a related subject, President Betty Beck announced the formation of a Library Team. By dividing our library into manageable groups, several members can each bring six books from their group to the meeting and we can all benefit from a larger selection every month and no single member need tote a heavy load. Betty immediately had six volunteers for the L-Team. What a Club!!! At the November meeting the boxes of books will be distributed and the members’ names will then be posted in *The Card* with their respective group of books.

You may reserve a special book by calling the member in charge of that group of references. The complete LCPC Library is in your Member Roster. Perhaps, with more reading, we’ll become a more informed membership that can opt to cast an educated vote or elect to vote for whatever pleases us.

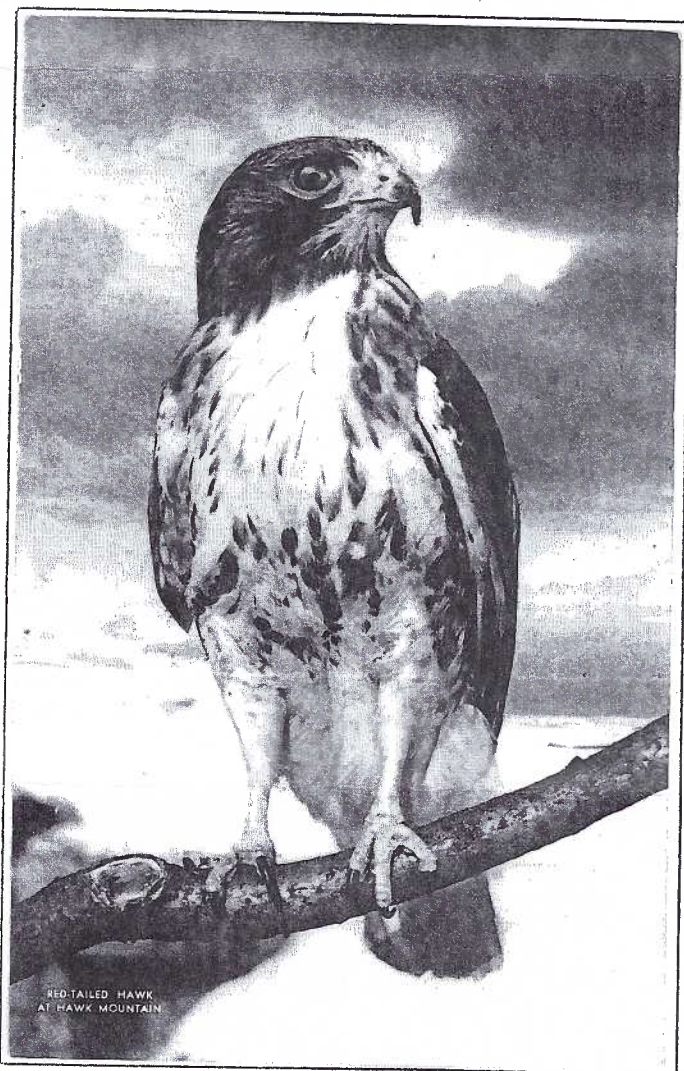
HAWK MOUNTAIN

Postcards from Kempton, PA.

We were all pleasantly entertained and learned much about local owls when Shirley Bubbs presented her program in October 1999. Was it that long ago?

This month she will once again bring along *mounted friends*. They represent a few of the 18 species that frequent Hawk Mountain near Kempton, Berks County, PA. Shirley's slide program will center on the history and development of *the world's first refuge for hawks*. It was during the Depression that Hawk Mt. materialized as a sanctuary. There was need for it. We'll learn how it came about and the roles played by its organizers, Maurice and Irma Broun and Rosalie Edge.

Shirley's lifetime love for birds and her years as president of the local bird club give her the credentials for an inspiring and informative program. Plan to be with us on November 19.



Red-tailed Hawk at Hawk Mountain (Broun photo)

FUTURE SHOWS

Nov. 9-11 Metropolitan Postcard Club Show.
New York Hotel, NYC.

Nov. 16-17 York International Postcard Show.
York Fairgrounds.

Nov. 23-24 Morlatton Postcard Show.
Farm & Home Center, Lancaster. (see paid adv.)

THE CARD November 2001 pg. 3

Checklist of 22 Hawk Mountain postcards complied by Ray and Shirley Bubbs and Jim Ward. Additions are most welcomed. *Descriptions are often the editor's since captions are lacking for most of these images.* Publisher name is the dividing line down address side.

Broun, Photo by Maurice

Irma Broun midst snow and ice covered trees
Red-tailed Hawk (shown with article)

View of distant farmlands

Broun, Photo by Maurice (diff. styled reverse)

Red-tailed Hawk and three girls

Dexter Press Dextone

47518 Birders looking into the distance

Dexter Silvercraft

Historical Schaumbock Home, Headquarters of...

Hawk Mountain Sanctuary

16588 Lookout from mountain

17042 Adult Red-tailed Hawk

17283 Eagle with wide spread wings

Livingston Publ. Co.

M. Broun and others at Hawk Mt. entrance

E. Madciff

209/E8704 Hawk Mt. Wild Life Sanctuary....

Merrimack

Hawk Mt. General Store (at base of mountain)

Outdoors Unlimited

R24004 Golden Eagle

Plastichrome

P20226 Red-tailed Hawk

P35112 View from below towards birders

P64548 Fall scene

No number - Lookout and rocks (photo by A.Nagey)

Whitman's Phototypes

Eight birders viewed from behind, mt. in distance

Seven birders, dead trees viewed from right side

Mountains, shadowed by clouds overhead

No publisher

Red-tailed Hawk

Real photo w/ white border (1937-42 type)

Hawk Mt. Wild Life Sanctuary (winter birders)

**John Klein
Postcards**



**Exit 21
Pa. Turnpike**

**Saturday 10-5
Sunday 8-5**

THEY ANSWERED THE CALL

In recognition of Veterans Day, the following essay was submitted by W. B. Heisey, LCPC #7.

For more than four decades, through three wars, the first glimpse of military life that thousands of draftees and enlistees got was at the New Cumberland (PA) Army Depot. While the facility was known as both a Supply (storage and warehousing) and Maintenance (repair and rebuilding equipment) Depot, there was originally a U.S. Army Reception Center located there.



Re. C. 2

A First Formation—Army Reception Center—New Cumberland, Pa.



Re. C. 2

Reception Center—Interviewing for Classification.

Greetings from New Cumberland, Pa.

Some left home with ceremony, others left quietly. All dressed in their Sunday finest (soon to be traded for olive drab) and all wondering what the future holds.

Interviews, tests and more tests, then physicals and more tests. If you excelled in math and science, you'd probably be assigned to the motor pool.

Getting fit with military clothes. It was usually a decent fit but it took a while to break in the combat boots. All items of civilian clothing were sent home — no more street clothes until after basic training.

The recruit's stay lasted from a few days to two weeks, after which he was sent to another military base for Basic Training. During World War II, a number of postcards were issued for the young soldiers to use for their messages home. Most cards contained the word "free" in the stamp box, since postage was not required for the military.

A few cards could be considered "generic" since the same image turns up with captions of other military bases. There are three series of 10 cards and some with no series numbers.

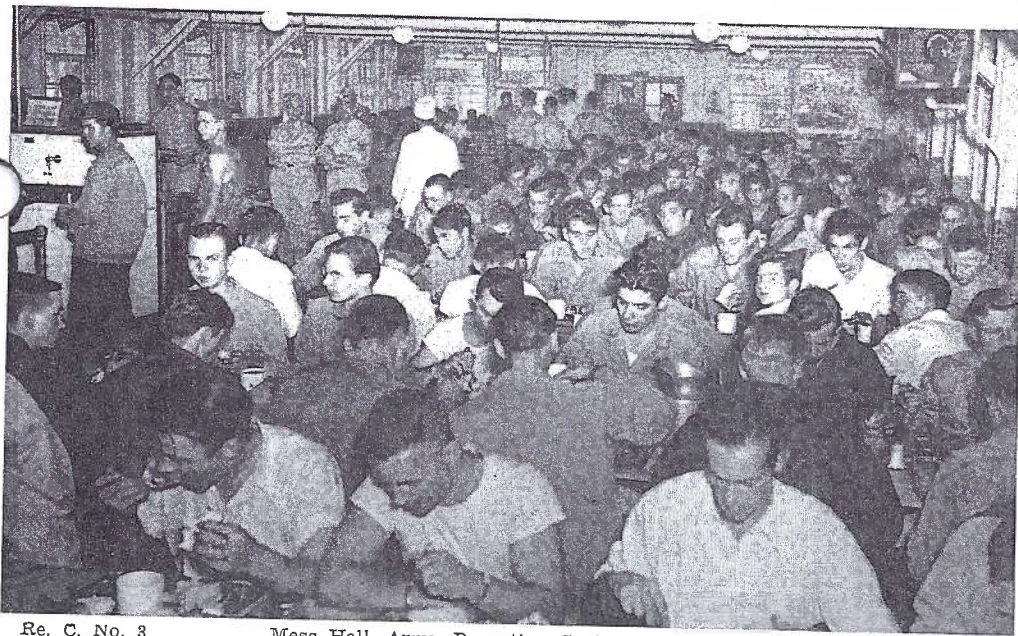
The cards tell the story of military life for these new recruits. Messages generally reassured the folks back home that "I'm doing just fine."



Re. C. 4

Reception Center—Being Fitted with Blouses and Trousers.

Greetings from New Cumberland, Pa.

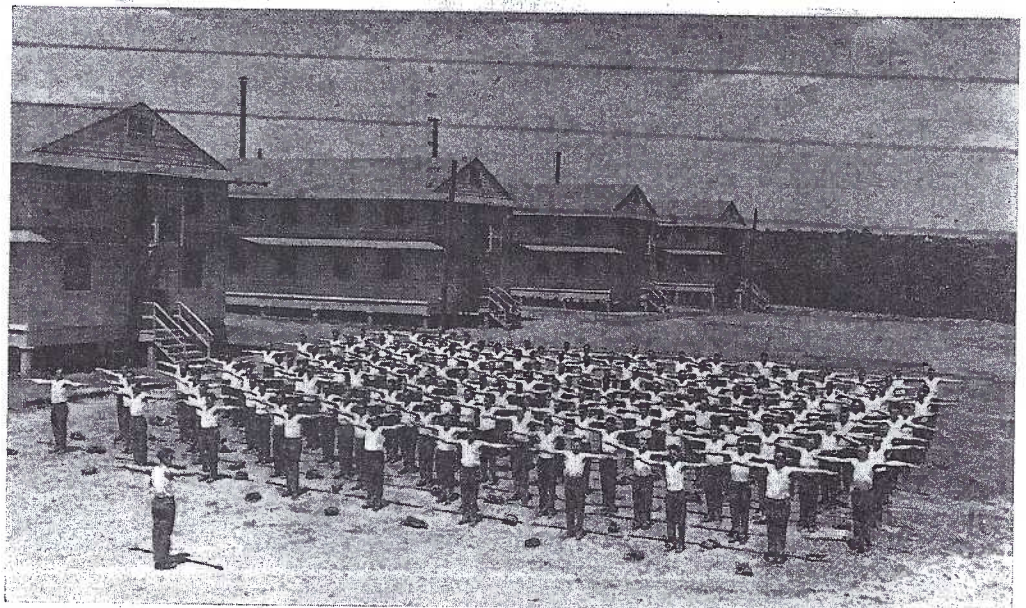


Re. C. No. 3

Mess Hall, Army Reception Center, New Cumberland, Pa.

This chow sure isn't Mom's cooking, but when you're hungry, anything tastes good and after a while, it isn't too bad.

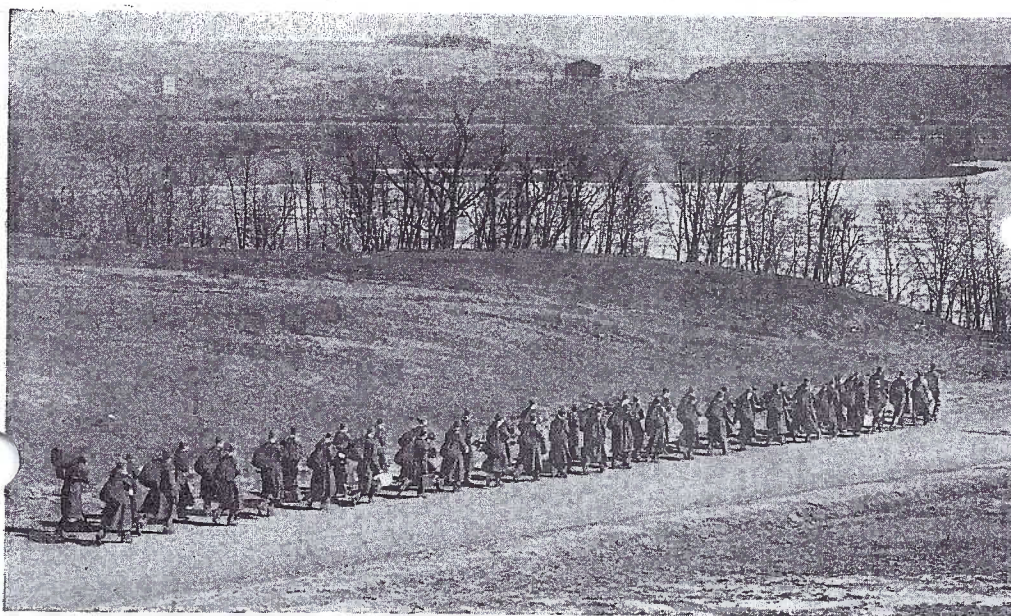
PT (physical training) was required for all. Some were already in good shape, others were hurting. Wait till they get to basic training!



Re. C. 7

Reception Center—Calisthenics.

Greetings from New Cumberland, Pa.



Re. C. 10

We're in the Army Now—Recruits Leaving Reception Center—New Cumberland, Pa.

Carrying all their GI belongings in their duffels, the recruits are off to basic training. After 8 to 12 weeks, there was a short leave – if they were lucky, then it was on to more advanced training. They're in the army now!

CHRISTIANA POSTCARDS

6 Old Real Photo Views Reissued

The Christiana Historical Society has introduced six reprints of original real photo views of the community. The Society's continuing efforts is to promote and preserve its local heritage

Available immediately from the borough office, at the Moores Memorial Library or the Gap Diner are: 1) Birdseye view, 2) Bridge Street, 3) Trolley at the Bridge, 4) Bank on Slokom Street, 5) Harrar's Store, and 6) Hershey's Store showing a Horse drawn Wagon with Sam Carter, Dr. T. S. Irwin and other residents. The first five views were selected from an LCPC member's collection; the sixth view was reprinted directly from original photo plates.

Available at Morlatton Postcard Show

The Historical Society will have a table in the lobby at the Morlatton Postcard Show on Nov. 23 and 24 (see adv.) to sell the cards. They are standard size, printed in a sepia tone and identified with "2001 Davco Graphics." This is the Davco Family Group of Gap that did LCPC's 10th Anniversary card. The excellently executed postcards are just 75¢ or \$4 a set.

1,000 copies of each view were printed with a limited number of these having affixed a cancellation and vignette of the Christiana Riot House on the reverse. They read "Celebrating 150 Years/Christiana Riot House Station/September 8, 2001/Christiana PA 17509." The house as well as "Sept. 11, 1851/ Freedom Began Here" appear to the left. The cancellation date of Sept. 11, 2001 also appears on the post-



Hershey's Store from a photo plate in CHS collection.

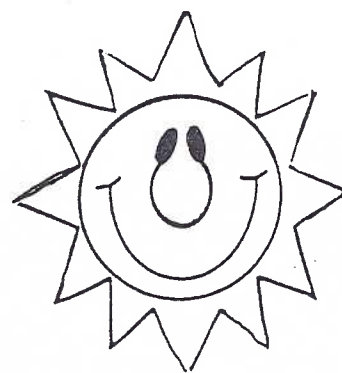
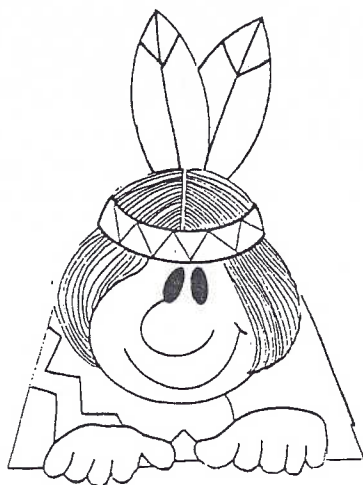
cards. These cancellation cards (with 21¢ stamp) are \$1.50 each.

Congratulations to CHS for doing the job right! Your editor has been in Gap (which is also celebrating an anniversary) three times in the past six months but has been unable to purchase this borough's cards since *they're available only at the tri-centennial headquarters and only on Saturday mornings!* (They're also continental size.) Dumb! Dumb! Dumb!

MORLATTON POST CARD CLUB INC.

26th Fall Postcard Show

Farm and Home Center
1383 Arcadia Road
Lancaster, PA 17603
(off Manheim Pike Rte. 72)



Friday, November 23, 2001 - 10 A.M. to 6 P.M.
Saturday, November 24, 2001 - 10 A.M. to 4 P.M.

No Pre-Show Buying

Admission \$1.50
(25 cents off with ad)

For more information call
Kay Feight, (717) 263-1638
Leon Rowe, (610) 444-0641