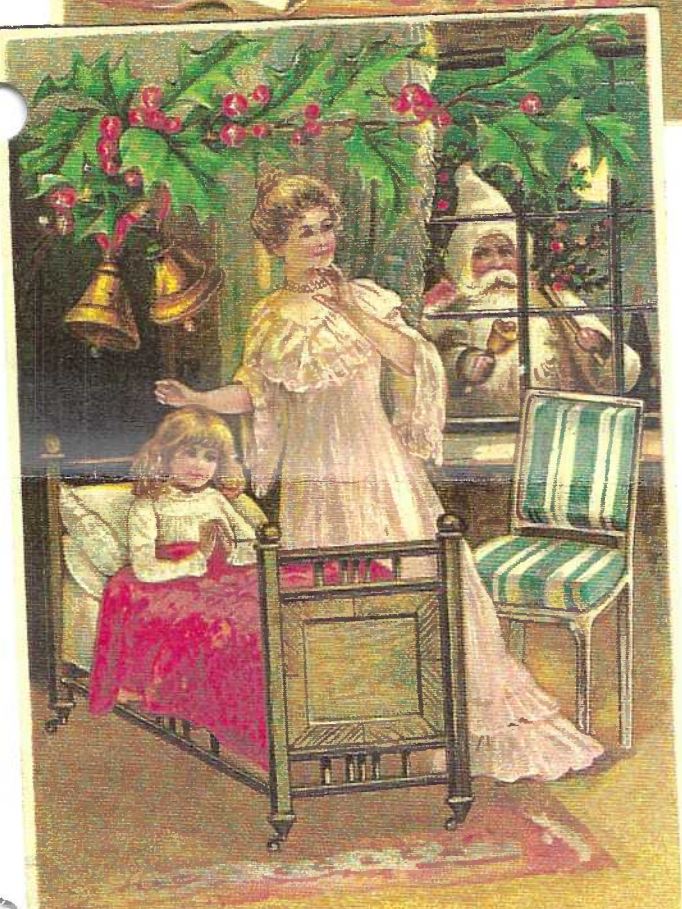
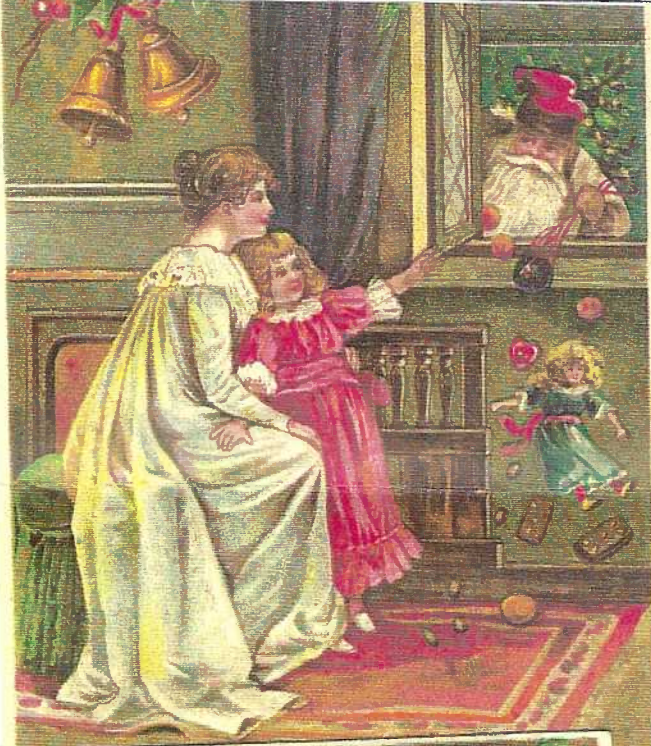


THE CARD Vol. 12, No. 12. Issue 144. *Enjoying postcards through education and entertainment.*

Monthly publication of The Lancaster County Postcard Club, Lancaster, PA.

Next Meeting: Mon., December 17, 2001. Christmas Dinner and Christmas Center - details inside.

Club and Editor's address: LCPC c/o Jim Ward, 1795 Kleinfeltersville Rd., Stevens, PA 17578-9669 or mid-creek@ptd.net.



A MERRY CHRISTMAS



A merry Christmas

December Program

CHRISTMAS PARTY and VISIT to THE NATIONAL CHRISTMAS CENTER

Our annual Christmas Dinner/Meeting this year, for the first time, will be a catered meal rather than a covered dish. Everyone, especially the cooks, get a break; our wallets, too. Profit from sale of our postcard view book in 1993 was not the primary motive for assembling Windows to Our Past. We felt there was a need to display 500 local postcard views as well as a need to inform the public that postcards play a vital role in preserving our heritage.

This said, we netted a substantial amount of money and the club, in a number of ways, is using that money. It finances a fine place for meetings. It allows the luxury of color in every monthly bulletin as well as in our membership roster and Expo program. And now it will subsidize a Christmas Dinner and admission to the Christmas Center.

The Meal

Dinner will be at Bird-in-Hand Family Restaurant on Route #340 in Bird in Hand. Drive to rear of restaurant and park. Enter a door marked Banquet Rooms. The buffet meal will begin promptly at 6:30 PM. It will consist of fruit punch, relish tray, fruit cup, tossed salad, roast beef, roast turkey, filling, cranberry sauce, sweet potatoes, corn, applesauce, rolls, assorted pies, ice cream and beverages.

Only a brief election of 2002 officers will transpire then door prizes (some really nice donated items by the Becks) and the table poinsettias (an annual custom). A special Christmas gift will go to each family at the dinner. By the way, LCPC has always been informal – so ties and coats are NOT required!

The Route

We will auto from Bird in Hand east 500 ft. then south (right) on N. Ronks Rd. to Route #30; turn east (left) and proceed through Paradise towards Vintage, looking for The National Christmas Center (on your left – north side of Lincoln Hwy.)

Everyone will enter as a group (not unlike a bus trip) and – this is important to LCPC member Jim Morrison, the curator: a head count must be made so LCPC can pay him for adults (\$8), seniors (\$7) and children over 12 (\$5). Your earlier check to LCPC for \$3 per person goes to the club's treasury. By the way, your \$5 check for the meal also went to the club treasury and the club, in turn, pays the restaurant \$16 per person. Those who wish may take one guest (per member) at those reduced prices and can share a great night out for \$8 instead of \$24.

The Center

If you were with our group three years ago you know how wonderful The National Christmas Center was. You didn't see nothin'! – compared to a year later. Each year it has grown and changed so much, you'll find it impossible to see anything exactly as it was. The expansion and added beauty is quite spectacular.

There's a room with a little boy surrounded by 1950s gifts and furnishings; an 1890s cotton wrapped tree and life-size Kris Kringle; a wall display of dozens of old electric trains and a Victorian parlor where Virginia receives her letter supporting her belief in Santa Claus, and these are just in the lobby!

A hallway is lined with dozens of vintage Magazine covers and advertisements on one side and thousands of Santas of all sizes and ages on the other. A working nickelodeon plays in a corner and beyond there's Tudor Towne, completely renovated (and re-wired courtesy of LCPC member Bud Heim) telling the story of the animal's Christmas.

The Nativity section surpasses a similar display in the national nativity museum in Austria, according to an LCPC member who was there.

The mammoth train room has a ceiling of lighted branches and a giant tree trunk so you feel like a child lying beneath the tree, looking at dozens and dozens of operating trains in one huge circular Christmas yard.

There's Santa's Castle with Mrs. Claus. Did you know she was a talented artist? She actually paints ornaments and can initial and date them for a personal souvenir of your visit! Much more awaits you

The Christmas Center can provide one wheel chair. You are encouraged to bring your own. The Center is accessible for wheel chairs and walkers, scooters and roller skates (the latter not recommended). A tour takes at least an hour, longer if you give it the time.

The Deadline

Final deadline for checks to be in the hands of Tom Beck is December 5. The Becks will be away right after that and unable to coordinate any further reservations. You need not go to the Christmas Center but if you do, it must be with the group. Jim M. cannot cope with members at the reduced rate any other time except December 17 at 8 PM when we all arrive.

Neighbor Needs of Postcard Help

In 1998 Deborah and John Calabrese purchased property in Leola, on Route #23. They are looking for any photos or postcards that will show any parts of the property now known as Leola Village Inn & Suites. Views might well include trolleys that passed along the property.

The area is farthest west in present Leola and might then have been labeled "Mechanicsburg" or "Leacock", old names for the area. Families associated with the property were Bard, Brubaker, Lehman, Herr, and Bare. If you can be of help, contact Deborah at 1-717-656-7002.

Cards on Our Cover

Identified only as "B.W.", this mystery publisher from Germany produced many fine sets of cards, pre-1914. Here is Christmas set #296. The central theme centers on a child with her mother. Although a set, none of the little girls, mothers or Santas are identical, so each card can easily be collected for its own merits.

In her bedroom and at the piano, she's oblivious to the jolly elf, about to make his annual visit. On another card she's discovered Kris Kringle and welcomes him to her home as her pet sleeps nearby on the foot stool. On the fourth card, she seeks the security of her mother as Christmas surprises tumble through the window.

The cards are highly embossed. Such cards are worth a premium when you find them with their color fully intact. For instance, a high point on the upper right card is the pillow on the stool in the lower left corner. Several flakes of color have been chipped from its surface. Even so, the four cards are generally in extremely fine condition, the set worth \$30 to \$40.

LIBRARY TEAM

With six members volunteering on the newly formed Library Team, we'll have more opportunity to borrow from the club's vast collection of references. The team members have approximately the same amount (by weight and volume) of books, which will be kept at their homes. From their share, they will, at random, bring six books to each meeting. This will provide 30 to 36 books from which to choose (allowing for the absence of a member from time to time).

Should you like a particular book, you can contact that member in charge of your book and you'll have it to use for the following month. Please keep a book for a maximum of one month unless there's a special project where you need it longer.

Here are the members of the Library Team and their respective sections of LCPC's library. You can get their phone, address or e-mail from your roster as well as the complete library listing – on the last two pages of your membership roster.

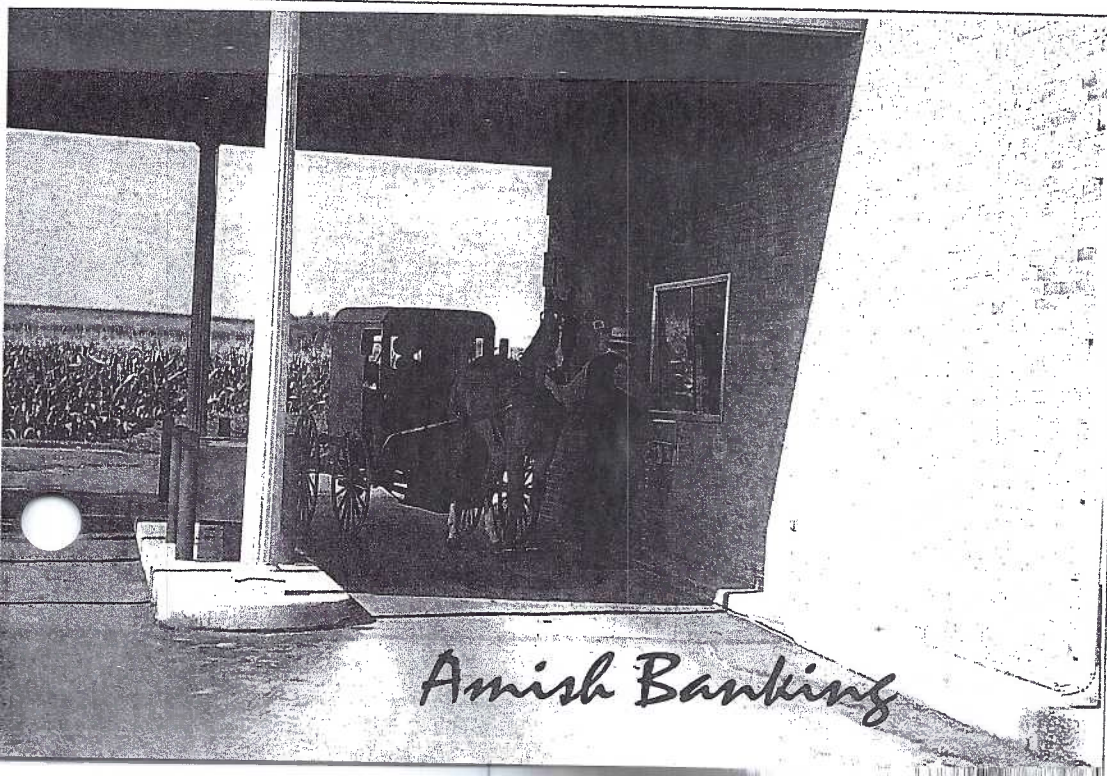
Ruth Yohe	Local Interest
Betty Beck	Specialty Subjects
Teresa Jumper	Views
Bill Guntow	Artists, Trade Cards, Holidays, Publishers, Transportation, Reprints, Magazine Articles

Brian Frankhouser General Interest, no prices
Dale Shaub General Interest, w/price guides
(Dale is a new member since the July roster was published. He can be contacted at 1-717-285-7670 or 3889 Sterling Way, Columbia, PA 17512.) Info for the other team members can be found in the roster.

LOCATION SOUGHT

This undivided back real photo card has a stamp box with dotted outline attributed locally to the Lancaster Photo Supply House. Dorothy Aument wonders where the building might be.

It resembles many meeting houses in the county. Most are brick but this one is of stone construction. Then, again, it may not be a meetinghouse. Your input is sought. Dot can be contacted in Willow Street at 1-717-464-1843.



LOCATION FOUND!

In the past, we ask for the location of this drive-in bank window; no response. In driving through the eastern end of the county two banks with surrounding fields were likely sites: in Leola and in Intercourse. Which was correct? Answer is on pg. 6.

NEW MEMBERS

#617 Marilyn Leese 17 Conestoga Blvd., Lanc., PA 17602. Ph. 1-717-397-7150. Humorous and Lancaster County.

#618 Jim Bracken 2929 Edgington, Alexandria, VA 22302. Ph. 1-703-838-2819. USMC, blacks and patriotics.

Re-instated

#544 George Clair 225 New Holland Pk., Lanc., PA 17601. 1-717-394-0013. Lancaster and the Civil War.

Latest in Series by LCPC Member

UNCLE SAM SANTA POSTCARDS

Frederick Arthur Yohe, LCPC member #359, has just published his 16th and 17th original art postcards. They are printed in color and are titled "Uncle Sam Santa #1" and "Uncle Sam Santa #2." Each design has a printing of 500 pieces.

Modern Postcard of Carlsbad, CA produced the cards in continental size.

The artwork is pen and ink and acrylic paint. The white in Santa's beard, the stars and stripes are painted in thick acrylic on the original. This causes a raised effect, which is especially evident in Santa's beard.

Seemingly just another patriotic theme among thousands that emerged since September 11th, Fred's artwork was done back in the spring of 2001. Even so, the artist admits noticing faster than usual sales of these last two entries in his original art series.

Subtle differences include the untrimmed tree and right facing flag on card #1.

A few of the cards have sketched eagles on the reverse. These are available, signed, for 50¢ over the regular price of \$1 each. Contact Fred. A Yohe at 237 S. Pleasant Ave., Dallastown, PA 17313 or phone him at 1-717-244-5978. Please add 55¢ for postage on mail orders.



2002 Officers and Directors

The Nominating Committee was unable to complete a slate for 2002 in November so we're looking for someone to fill the roles of Vice President and Secretary. Secretaries simply record the pertinent meeting activity and read the notes the following month. Presence at the Board meetings (about 4 to 5 times a year) is essential. Those meetings have been at the Becks and if the past is any barometer, the venue and refreshments are well worth the job of note taking.

The primary job of VP is to line up and coordinate programs for the year. The present Board has largely done this for the incoming officer. (See schedule below.) In our club, VP automatically assumes the role of President – an easy move as the VP gains first hand knowledge of how the club operates.

In twelve short years, LCPC has nearly perfected a method to maintain a successful postcard club. The pattern is there, filling the positions is much simpler than it appears. Why not give it a shot?

Officers for 2002

President – Tom Beck

VP –

Treasurer – Barabra Mowrer

Secretary –

Directors (2001-2002)

Ruth Moyer, Harold Moyer, Jim Ward

Directors (2002-2003)

Dede Schaeffer, Bill Guntow

Tentative 2002 Program Schedule

January – Member participation: The number 2

February – Faces, We Each Have One (Earl Carver)

March – Gettysburg and the Civil War (Jim Ristine)

April – Free-for-All (Members Buy, Sell and Trade)

May – Covered Bridges (Mary Darrenkamp)

June – Annual Picnic (Jim Ward)

July – Christmas in Lancaster (Jim Morrison)

August – To be announced (Harold Moyer)

September – To be announced (Bob Epler)

October – Annual Auction (Norman Zimmerman)

November – To be announced (Brian Frankhouser)

December – Christmas Dinner Party

67 Members and 1 Guest Present

MONTHLY EXHIBITS

The topics started with the letter T and typical turkeys played a major role in the November board competition. In the absence of Ruth Frankhouser, Ruth Moyer settled in quite comfortably and most ably as Exhibit Coordinator. A thorough analysis of the boards' contents beforehand by Ruth, gave members a better perspective. Voting was noticeably increased. Good.

Jim Ward	First	Children and the Toys
Walter Mowrer	Second	Patriotic Turkeys
Harold Moyer	Third	Turkey Transportation

Honorable Mentions

Earl Carver	Timepieces
Don Davis	Thespians
Betty Weaver	Tom Goes Patriotic
Ray Bubb	U.S. Army Transports

Thanks to the participants for reminding us of how delightful our hobby can be. There will be no exhibit competition in December in order to conserve time at the dinner and for the visit to the Christmas Center - Museum.

January's topic will be on a board: white

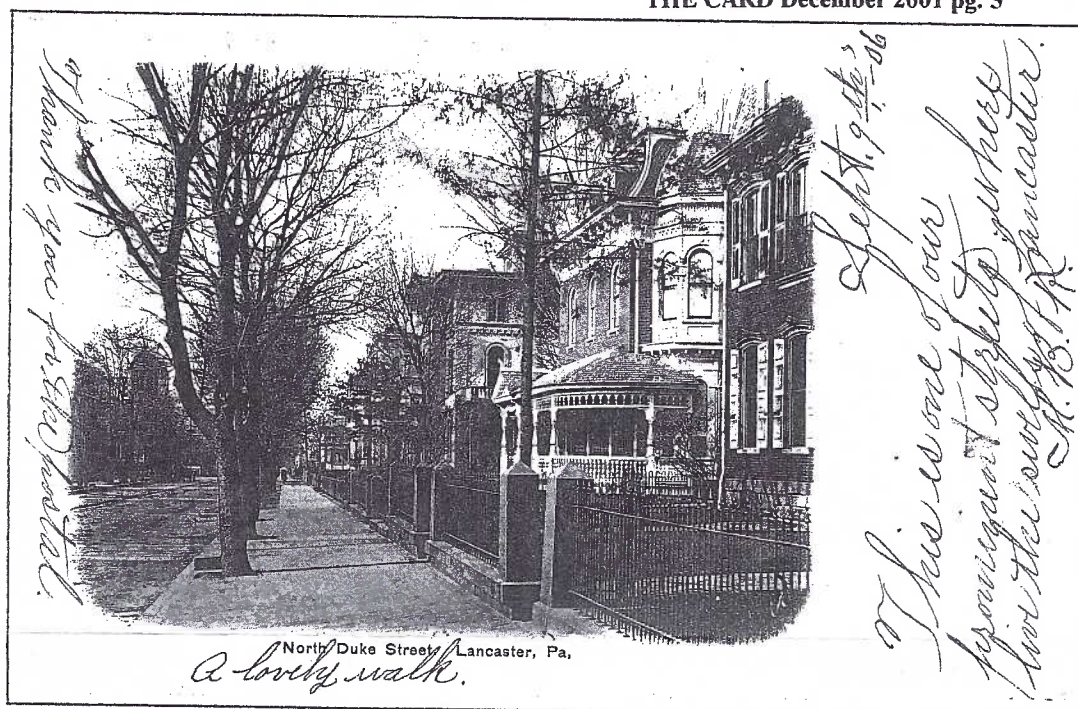
February's topic will be on a board: black

March's topic will be on a board: green

Local Messages on Postcards

Sept. 9, 1906 (Shown – a view of North Duke Street, #A1958, by The American News Co., NY, Leipzig and Berlin.)

"This is one of the prominent streets where live the swells of Lancaster. M. B. R. A lovely walk. Thank you for the postal."



In case you're interested (and I bet you are) below are family names listed in the 1903 Directory for the 400 block of N. Duke Street. (The view looks north from Lemon St. and shows the Jewish temple in the distance at Duke and James Streets, ergo we deduce it to be the 400 block.)

Armstrong, Bitner, Shirk, Rohrer, Todd, Brown, Amer, Rosenstein, Zook, Skiles, Hartman and Long lived on the west side. On the east side were Keller, Baer, Hartman, Steinmetz, Baker and Bates. Many appear to be merchants and bankers. Was he or she (M.B.R.) of the working class, this might well have been an accurate opinion 100 years ago.

Oct. 2, 1880 (on a postal card)

From Philadelphia, E. G. Ford wrote to Mrs. Wm. Wait(z) who lived at 422 Manor St. in Lancaster, "I will call on the 22nd of this month in reference to clothes wringer."

Mrs. Waitz' husband was proprietor of cigar and tobacco shops at 5 and 103 N. Queen Sts. Can we speculate that it was her business-minded husband who prompted her to complain about a broken clothes ringer on her washer? or perhaps, it was Bill's present to the Mrs. and a Phila. firm's agent was stopping by to install the birthday gift?

JANUARY PROGRAM

January's program, to remind us of the New Year, 2002, and the progress on our second volume, *Windows to Our Past*, Volume Two, will be the **number 2**. Each member should bring one postcard whose central theme is **TWO (2)**. Let's see how much variety can be generated. It ought to be fun! Please limit your remarks about your card to **TWO** minutes.

Have you a theme that would be appropriate for our 2002 National Postcard Week (NPW) card? If it is a bicentennial, centennial, etc. anniversary and of local origin, its chance of being selected is good. A short discussion at the January meeting should give the NPW Card Committee ideas to work with so a selection can be made and work commenced for printing in time for distribution before NPW week – the first full week in May.

June 23, 1912 (view of the Court House)

From Lancaster to Mrs. Trischler in Germantown. "Well dear, will sure leave here Wednesday morning early. It takes 5 hours, so will get to Phila. by noon and out to you sometime in the afternoon. If I am tired trolley riding, will go out on the Reading (Railroad), but don't bother to meet me. I will find you. Love, Ellen."

A Year Long Gift

The Journal of the Postcard History Society

Two years ago John McClintock gave me the privilege of editing and publishing the PHS bulletin that he had begun 15 years earlier. The job has been rewarding. With a few changes in format, the addition of color and the added name, *The Journal*, subscriptions increased and continue to do so.

The Journal for December includes postcard articles about Phoebe Snow, holly wallpaper PCs, an old western publicity ad and Our Readers Write (a column of correspondence and want lists from subscribers); an up-date on John McC., birth announcements, a TV postcard show, the Black Hand Society, unusual messages, Nister's Valentine cupids, Lincolniana, World War I mules, comic families and a sympathy PC; the Old Burning Spring at Niagara Falls, Goat Day, H.B. Griggs miniatures, Farm Collector contribution, winter jewels and Nick's Virtual PC Collection; holiday miniatures from Sweden, an early PA health notice, patriotic Christmas PCs and The Most Exciting News in Recent Postcard History.

Most of the postcards used in *The Journal* articles are for sale plus the December issue includes two added pages of 135 lots of sale cards. Each quarterly issue is at least 12 pages with color.

A subscription for 2002 is \$7. New subscribers will also receive the December 2001 issue for an additional \$1. Send your check for \$8 for the Dec. 2001 issue and the year 2002 to Jim Ward, 1795 Kleinfeltersville Rd., Stevens, PA 17578-9669. A paid ad.

This 'n That

Set up and selling in November were: Howard Steinberg, Mike Middleton, Walter Mowrer, Fred Yohe, Dick Bishop, the Moyers and Jim Ward.

Door prizes were won by Betty Beck and Leighton Stover.

Jim Ward announced that Work Sheets were arriving in good time and after sorting, there will be calls made to members in some areas where more cards are needed. Our aim, since Day One, is for delivery of Windows Two at the Expo Ten in August.

Follow up to NOVEMBER PROGRAM

Shirley's presentation included a comprehensive presentation on Hawk Mountain by Shirley Bubb. We expect the best and get the best when Shirley's programs are scheduled. Our in-house bird expert brought along a three species commonly found in Lancaster County – the red-tailed hawk – a highway warden waiting to clean up each day's road kill; a sharp-shinned hawk – the most common predator at back yard bird feeders; and the American kestrel* – the local wire-sitter who looks for grasshoppers in summer and mice in the winter. *Our parents knew it as the sparrow hawk. (Available on today's 1¢ stamps.)

Shirley's presentation including a comprehensive outline of facts that led into the early history of Hawk Mt.; a brief ornithological lesson on the groups of migratory species and ended with postcard slides of the species as well as views from overlooks at the site. The sanctuary straddles Blue Mt. at the eastern tip of the Kittatinny Ridge in Berks County.

We were introduced to Rosalie Edge who took on and won over the entire Audubon Society with her persistence in saving the mountain site. Then there was Austrian-born Maurice Broun who spent 30 years as curator and his 5-ft. wife whose taller-than-life stance at the sanctuary's gate refused entrance to resident hunters who'd been warming their rifles on thousands of raptors for most of their lives.

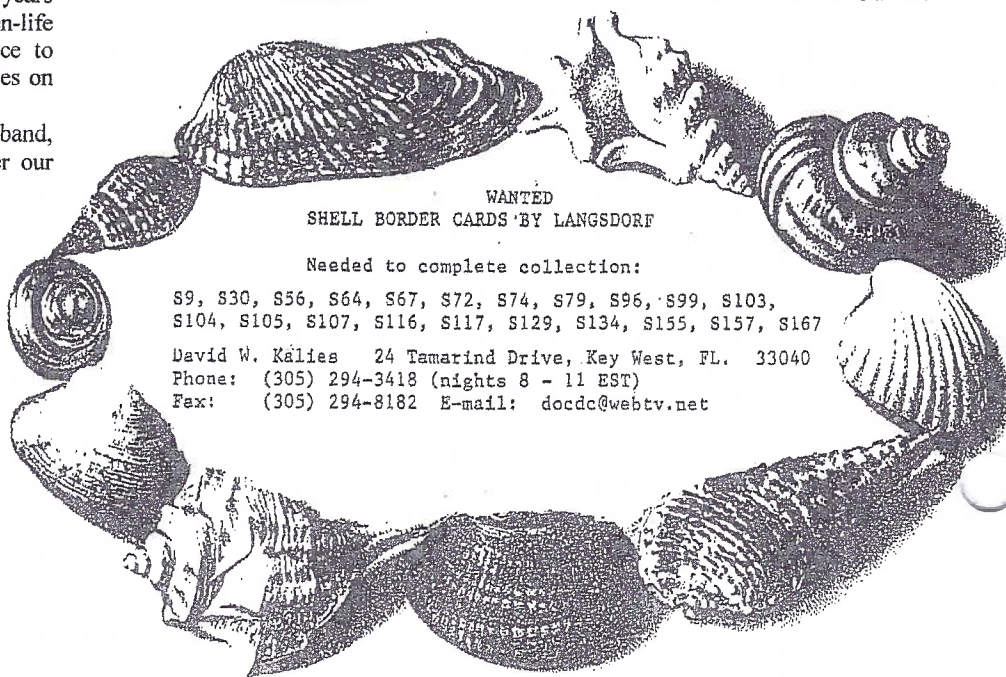
Thanks, once again, Shirley and to husband, Ray, for his assistance. What's next to feather our intellectual nest?

From pg. 3 – Location Found

The drive-in window utilized by the Amish man with horse and buggy is the Farmers First at the eastern end of Intercourse. A teller, who's been there since it opened in June 1974, believes she remembers the picture being taken in 1986. It's #9304-CP11107 printed by Scene-ics of Mechanicsburg, PA. The 1993 photo is by Steve Miller.



A series of Christmas postcards featuring children, angels, dogs, cats and Santas have holly background, resembling wall paper. From that series, these Santas are here to remind you that Dec. 17 is the day, 6:30 PM the time and Bird in Hand Family Restaurant the place. See details on page 2.



WANTED SHELL BORDER CARDS BY LANGSDORF

Needed to complete collection:

S9, S30, S56, S64, S67, S72, S74, S79, S96, S99, S103, S104, S105, S107, S116, S117, S129, S134, S155, S157, S167

David W. Kallies 24 Tamarind Drive, Key West, FL. 33040
Phone: (305) 294-3418 (nights 8 - 11 EST)
Fax: (305) 294-8182 E-mail: docdc@webtv.net