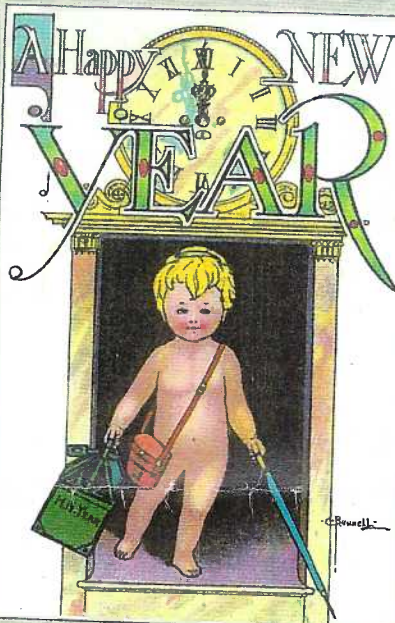


THE CARD Vol. 13, No. 1. Issue 145. *Enjoying postcards through education and entertainment.*

Monthly publication of The Lancaster County Postcard Club, Lancaster, PA.

Next Meeting: Mon., January 21, 2002. Buy, sell, trade from 5:30 p.m. Meeting at 7 p.m.

Club and Editor's address: LCPC c/o Jim Ward, 1795 Kleinfeltersville Rd., Stevens, PA 17578-9669 or mid-creek@ptd.net.



Happy New Year
to all
and
Happy Birthday
LCPC,
You're 12 years old!



#57 Little Italy at McCall's Ferry Dam, Lanc. Co., 1907. The village was named for the large percentage of Italian immigrants employed in the construction.



McCALLS FERRY CONSTRUCTION

"Long Set" of Local Postcards Has Only 15 Known Views

We've previously discussed the building of the huge dam at Holtwood on these pages. The monumental task was a draw for week-end tourists as well as a dozen postcard publishers. Who knows how many real photographs became real photo postcards?

One local publisher whose black and white views are frequently found in collections is Conestoga Publishing Co. of Lancaster. In addition to dozens of miscellaneous views, Conestoga issued a set of numbered cards of McCall's Ferry while it was under construction. Many collectors are turned off by the numbers - thinking a set of 61 or more (?) cards is a huge undertaking, particularly if the river isn't a priority area for them.

The truth be known, in more than 35 years of collecting CPC views, as well as other McCall's published cards, we have seen only fifteen (15) cards in the set.

Charlie Griffiths, (LCPC #4, deceased) had what many of us consider the final word on listings of local publishers. His list of more than 55 Conestoga Pub. Co. views include only seventeen (17) with numbers, of which the first two are close to, but not at, the dam construction.

Here is Charlie's list of *numbered* Conestoga Publishing Co. views. If you can add any cards to the list, or offer any information or explanation for the missing numbers/views, please share it with the club.

37 View Along Pequea

38 Martic Forge Trolley Station

39 through 46 = these views seem NOT to exist

The following appear to be the set of 15 McCall's Ferry black and white views:

47 Construction Bridge, McCall's Ferry Dam

48 Natural Channel in Susquehanna River at McCall's Ferry

49 Construction of McCall's Ferry Dam

50 Concrete Bridge at McCall's Ferry Dam

51 High Water at McCall's Ferry Dam, Mar. 15, 1907

52 Ice Flood at McCall's Ferry Dam, Mar. 15, 1907

53 Wheel Pit at McCall's Ferry Dam

54 Beginning Work at McCall's Ferry Dam

55 River Bed at McCall's Ferry Dam

56 Cofferdam York Co Side, McCall's Ferry Dam

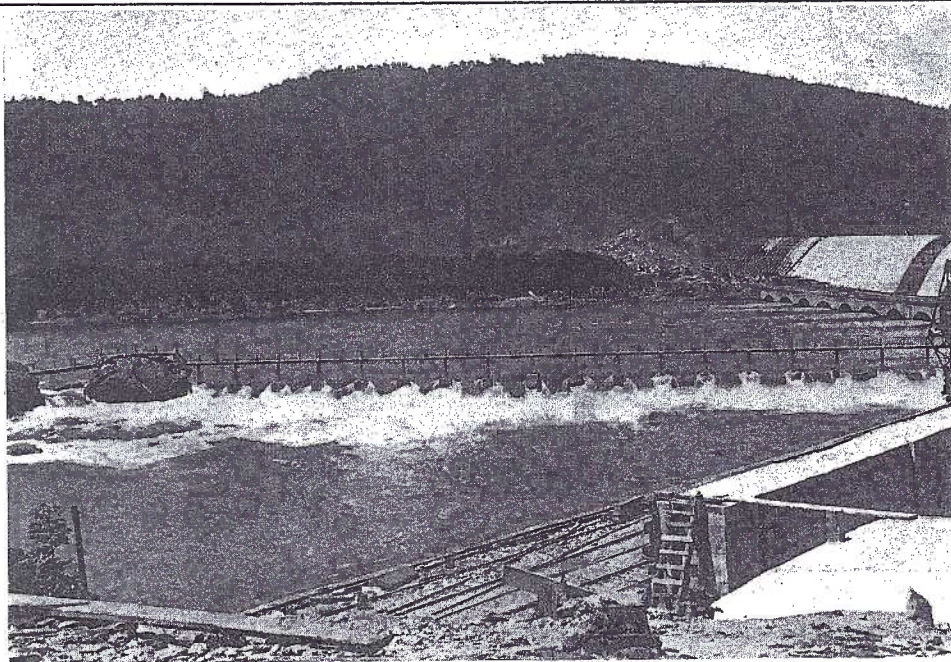
Continued on next page

This is card #61, but a typo shows it as #91.

Enclosed Postcard

To celebrate LCPC's 12th anniversary this month, we've enclosed a complimentary PC published by the club to celebrate its 10th anniversary in January 2000. Time flies when you're having fun! The cards are 25¢ each or 5 for \$1 at the meetings. By mail, please enclose an extra \$1 postage when ordering 5 or more. Make check to LCPC.

91 McCALLS FERRY DAM, FRY'S ISLAND AND FOOT BRIDGE TO SUPT. COTTAGE LANC. CO. PA. 1907



57 Little Italy at McCall's Ferry Dam
58 View of McCall's Ferry Dam from Fry's Island
59 Construction of Power House at McCall's Ferry Dam
60 Bird's-Eye View of McCall's Ferry Dam
61 McCall's Ferry Dam, Fry's Island/Foot Bridge to Sus..R

So, what might have been a useless proposition can be a reality if the Susquehanna River and its environs is a part of your postcard interest. Many of these views are in local dealers' stocks for \$2 to \$4 – quite reasonable for capturing the largest physical phenomenon in Lancaster County in the last 200 years.

An interesting note: the publisher evidently made several printings of some views, as the same view may have the caption across the bottom edge or along either the left or right side. Don't make the set difficult to complete = collect just one view of each number. The earlier printing can be identified with its undivided back. Conestoga simply left the message area on the front, even though the back was divided on later printings.

By the way, my little dog (helper) on the Compaq, went nuts trying to add an apostrophe each time he read McCall's. But, even though it was named for a Mr. McCall, the ferry postcards and the post office (Mar. 3, 1906 to May 13, 1911), appear with and without the apostrophe. On the CPC set = w/o.

Library Team

January will be our first experience with the club's new Library Team. Each of the team members will bring to the meeting a random choice of six books from his stock. This should give us 30-36 different books each month. If you have a special request, it's your job to contact the member with that volume. Check the Library Directory. It's found on the last two pages of your Membership Directory where you can also get the team member's phone number or e-mail address. New members who didn't receive a directory can contact Jim Ward midcreek@ptd.net or 721-9273, and one will be mailed to you.

Library Team Members

Ruth Yohe

Betty Beck

Teresa Jumper

Brian Frankhouser

Dale Shaub*

Bill Guntow

Their Library Sections

Local Interest

Specialty Subjects

Views

General Interest/no price

General Interest/prices

All other categories

Sign out for the book you wish to borrow for 30 days and give the card to the team member. Please handle the books carefully and return them promptly.

*A new member since the directory = 717-285-7670.

This listing will not be repeated, so make a notation on your Library Directory of the members.

'Sno Use Complaining

Much as we dream of a winter with "convenient snows" (while we sleep and those that raise the water table) they aren't always so obliging. If you're in doubt about whether a meeting will be held, call any of these strategically located club officers and directors around the county:

The Becks, Lititz 627-7732

The Moyers, Blainsport 336-6644

The Guntows, Lancaster 291-4975

The Mowrers, Columbia 684-5331

Jim Ward, Middle Creek 721-9273



Cover Cards

Our New Year cards are by artist C. Bunnell – one of those many postcard artists about whom we know very little. Those collectors who appreciate his work are familiar with sets published by Fred Lounsbury for the Fourth of July and Decoration Day. P. Sander, who discretely included a circled copyright logo near the bottom of each card, published this set. The number "417" can also be faintly read in the margin.

We don't know exactly how many are in this New Year set. If you have images not shown among these nine on the cover and above, please send copies to LCPC so we can share them.

In the left column we see Baby New Year enjoying three modes of transportation: as an aviator, a duster-clad driver and an ice skater. What isn't apparent at first glance is Old Year making an exit on each card – quite dramatically on the ice pond!

The second column shows Baby New Year emerging from the clock that's just struck 12. He's well equipped for his travels through the New Year – with tool chest, binoculars and an umbrella. Below, Father Time paints a portrait of our featured star, dressed in a New Year celebration clown suit, a painting of Old Year relegated to the back of his studio.

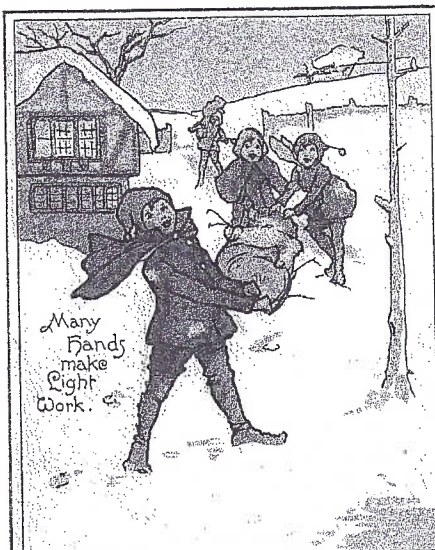
In the right column, Baby New Year has accepted an important ledger from Old Year. Perhaps he's considering where improvements might be made. We see him showered by Resolutions on the second card. Evidently there's none suggesting he wear more clothes. Finally, our featured character, in a timeworn statement, makes this entry, "Resolved – that all the resolutions of the past be resolved again." Hah! Baby, you're not better than the Year before!

The final card of the nine we've seen (above) shows Bunnell's Baby New Year, oblivious to the snow, happily entering his new world, with Old Year exiting right.

Bunnell New Year cards are valued at \$6 - \$10 ea.

Adage Set Takes Back Seat to New Year Resolutions

One of the perks of editing *The Card* is choosing postcards for our colored covers. An early (undivided back) English set includes six adages. These are familiar to most American children – learned early on – often as a consequence of an error, misjudgment and sometimes downright devilishness.



#208 Many Hands make Light Work



#207 Pride goes before a Fall

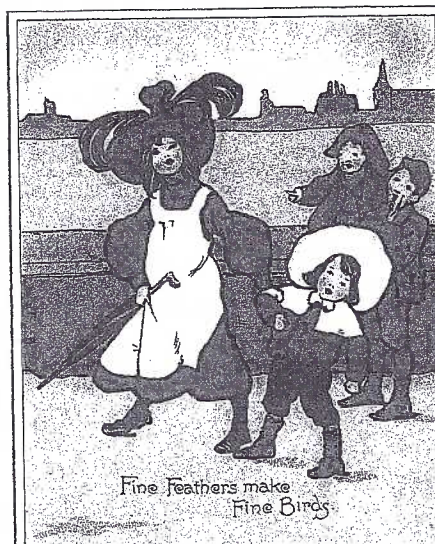
Neither the set's artist or publisher is identified, and, had it not been for the timeliness of the New Year Resolutions, it was a candidate for our January cover. So we've replicated the set (?) here, albeit reduced 30%.



#209 Two is Company, Three is None



#205 A New Broom sweeps Clean



#206 Fine Feathers make Fine Birds



#210 A Stitch in time saves Nine

MEMBERSHIP

#619 and #620 Ralph and Janice Homsher, 108 Harristown Rd., Paradise, PA 17562. Ph. 1-717-442-4443. Collect local Lancaster County views. They have already written up and submitted several excellent views for Windows to Our Past, Volume Two! Our paid membership, including the Homshers, now stands at 313. Congratulations to all!

Response to last month's subscriptions to *The Journal* was most encouraging. New subscribers received the December 2001 issue for just \$1. As a new subscriber, your subscription will also be just \$8 for 2002 and include the December 2000 issue. \$14 pays for all of 2002 and 2003 plus the Dec. 2001.

What's in it? – Phoebe Snow; a color cover of 12 Holly Wallpaper cards; an up-date on John McC; Our Readers Write; Old Western Publicity PC; Storks, Babies and Statistics; PCs on TV; The Black Hand Society; Unusual Messages; Valentine Cupids by Nister; Lincolniana; Uncle Sammie's Mules; Dam Family and Others; Sympathy; Old Burning Spring at Niagara; Falmouth GoatDay; Griggs' Unusual Cards; Winter Jewels; Nick's Virtual Collection; The Most Exciting News in Recent Postcard History; Patriotic Christmas PCs; PA Health Warning PC and New Year Greetings from Sweden.

Journal subscribers also bought 80% (646 of the 798) postcards listed For Sale in the first two weeks! It's a great postcard idea for yourself or a friend. Send check to Jim Ward. (Phone, e-mail and postal address on *The Card* masthead.)

Christmas Dinner

Catered Meal a Huge Success

A steady drizzle on the evening of December 17 wasn't nearly as bad as a snow might have been. Members and guests (112 in all) met at the Bird-in-Hand Family Restaurant and shared in a delicious meal and the fellowship that's built among local collectors these past twelve years.

Monthly Exhibits

To conserve time, there were no monthly card exhibits, but we're reminded that the subject for January's boards will be WHITE. The program for January will be a single card with TWO as the central theme - 2002 - get it? Members are urged to bring their card and clip it to the tabletop easel board at the front of the room. We will each have two minutes to explain our entry. Please limit yourself to one card - at least the first time around, so everyone has a chance.

Officers and Directors

Now back to the Christmas Dinner - Out-going President Betty Beck thanked her officers and directors for a successful year. She also had poinsettias for several who put in a good bit of "home time" for the club.

Susan Glass presented a slate of members to serve LCPC for 2002. As has been the case several times in the past, we've come right down to the wire for a vice president nominee. (In LCPC, it's understood that the VP automatically becomes President the following year. Serving as Program Chair, the VP has the opportunity to prepare for the President's chair.

Jim Ward, who was our only member given an Honorary Life-Time Membership, made the motion that "All LCPC presidents - past, present and future - be given an honorary life membership in LCPC, as long as the club can afford to do so." The membership voted for the motion. Unbeknownst to many of the members who had left after the dinner meeting, Bryan Benner, member #576, offered to fill the VP seat. Bryan had been approached by Susan at an earlier time but was still pondering the ramifications of the office. Bryan will do an excellent job and we're all looking forward to a good year with Tom Beck as president. The final slate follows.

LCPC OFFICERS for 2002

President - Tom Beck

Vice President - Bryan Benner

Secretary - Mary Ann Guntow

Treasurer - Barabra Mower

LCPC DIRECTORS for 2001-2002

Harold Moyer, Ruth Moyer and Jim Ward

LCPC DIRECTORS for 2002-2003

Bill Guntow, Doug Milliken and Dede Schaeffer

Door Prizes

In addition to the good food hosted by Nancy Hess who is not only manager of the restaurant, but also LCPC member #597, we were treated to a table of door prizes. The club gave poinsettias decorating the tables. Cookware, ornaments and stuffed animals were from Nancy, Betty, Tom and Jim. Witmer's Greenhouse supplied the poinsettias and donated a gorgeous 4 ft. plant. The restaurant also gave tickets for two free dinners. Everyone who didn't win a prize was given a large bag of animal crackers.

Surprise Gift

A pet project of President Betty Beck was to assemble a booklet of recipes contributed by club members. The little edition was published on the

club's copier and given to those who contributed recipes or signed up for the dinner. Only 80 copies were made, enough for these members or guests. We show a copy of the front cover.

National Christmas Center Tour

Eight-five members and guests continued the evening's festivities by touring at member #260, Jim Morrison's National Christmas Center in Vintage. No one was disappointed with the description they had been given in last month's CARD. In most cases, they were overwhelmed to see how much Jim has assembled and displayed in three short years since we met there in 1998.

All in all, regardless of the steady drizzle, it would have been difficult to plan a better evening. Let the officers and directors know your feelings about the event and what you'd like to do next Christmas.



The cover of LCPC's first Recipe Book.

Only 80 of the 5 1/2" x 8 1/2" booklets were printed.

The 24-page booklet featured on the covers old postcards containing recipes. The front cover (shown) was mailed from Catalina, CA, on Aug. 31, 1931. It was issued by Hotel St. Catherine and has an attached view of the hotel. Wm. Wrigley owned and developed Catalina Island. Wrigley's gum and vegetables were featured on the menu.

The back cover (both were in color) was a mailing card menu for passengers on the S. S. Colombia who toured the Panama Canal Zone. It was posted from there on September 8, 1923.

TROLLEY CARD and BEADS OF SWEAT

With a very nice Christmas card and her renewal check for The Journal, our Florida connection, Jo Jednacz, also included two postcards one of which is shown. After collecting Lancaster City views for 40 years, you too, might have had beads of sweat, a shaky hand and overall anxiety, finding this color view in Jo's envelope. On heavy stock, the card easily identifies the Lancaster Fire Proofing & Paint Co. as well as the Laurel & Filbert trolley car. – A local view!...never think you've seen them all!



It was mailed to Bethlehem, CN, from Fairbank (Fayette County) PA, BUT on Feb. 11, 1985. A sinking feeling...oh, well, it's still a dandy view. For the purist it isn't a postcard = it doesn't say POST CARD. However, for this writer who collects bits of history a piece at a time, it's still a great piece.

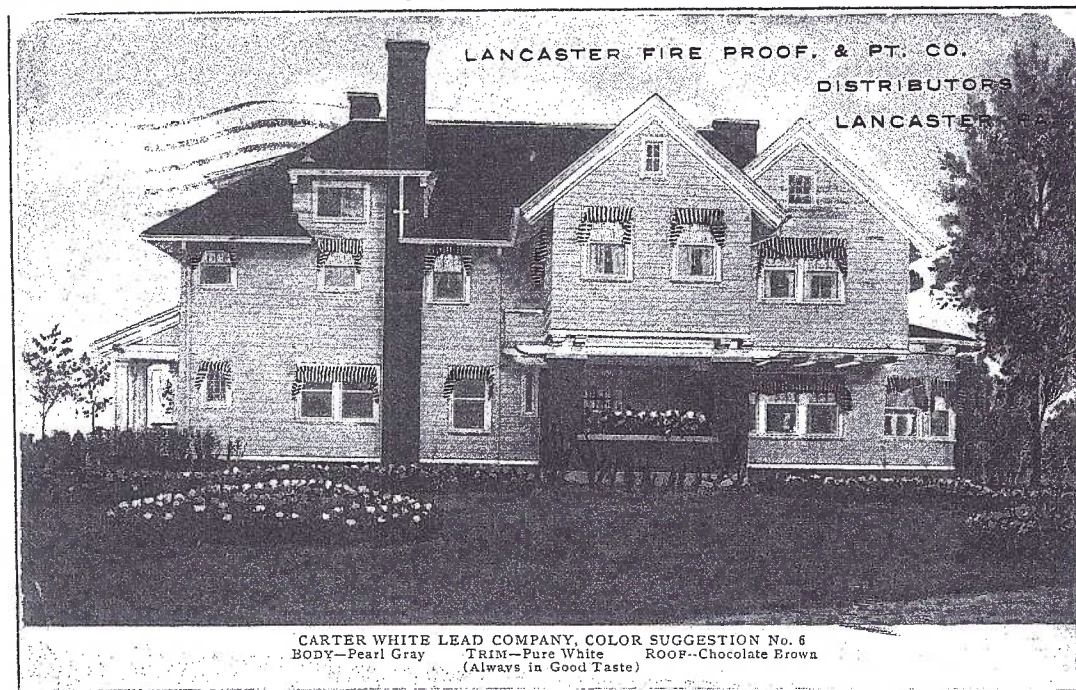
The Lancaster Fire Proofing & Paint Co. had a store near Penn Square in 1919 (possibly earlier – but not as early as 1903). The firm moved to the other end of the block by 1924. This view shows that new address at 49 S. Queen St., the last property on the east side, at the Vine Street corner. The window (with drawn shade) has a painted sign that's difficult to read because the sun was casting shadows behind the

letters. Some investigating shows that in 1935 it was the Red Rose Tap Room, owned by Albert Zaepfel.

The plain woman, with filled basket, might be coming from the Central Market on the square. Ladies on the opposite sidewalk have on winter coats. According to my research, The Laurel & Filbert trolley would be moving south (to the right) down S. Queen Street, away from the square.

Jo believes the card (and a second made of farmers at Kinzer) was sent to a collector of small post office cancellations. Fairbank, PA, had a population of 500 in 1972. The second card was mailed in 1960 from Drumore, Lancaster County, and Drumore boasted 30 people in 1972. The P. O. remains open.

Lancaster Fire Proof & Paint Co. was a distributor as well as retailer of paints and oil. "Everything in the paint line" was their slogan in 1903. Two postcards they used show upscale homes recently painted with Carter White Lead Company paint. They're both from the same era; one is postally used in 1914 and mailed from Lancaster to Landisville.



JANUARY MEETING

Buy, sell and trade from 5:30 to 7 PM. Business meeting at 7, new president, Tom Beck, presiding.

Old Business: Awards to contributors to *The Card*, Progress Report on *Windows Two*, New Business: New Committee chairs, Intro to new Library Team members, etc., Suggestions for NPW committee such as Fulton Opera House 150th anniversary, Brandywine monument erected at Ephrata Cloisters in 1902. Monthly Exhibit Boards: Theme is WHITE. (Feb. and March are boards on BLACK and GREEN, respectively); share LCPC's 12th Anniversary birthday cake; Program: each member brings a single card whose theme is the number 2, for 2002, etc. (February's program by Earl Carver, "Faces – We Each Have One.")