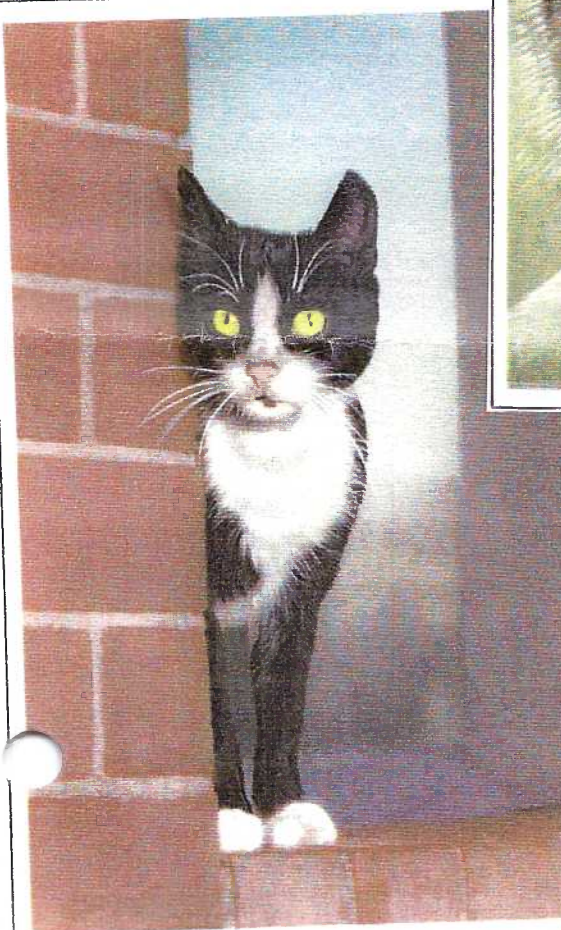
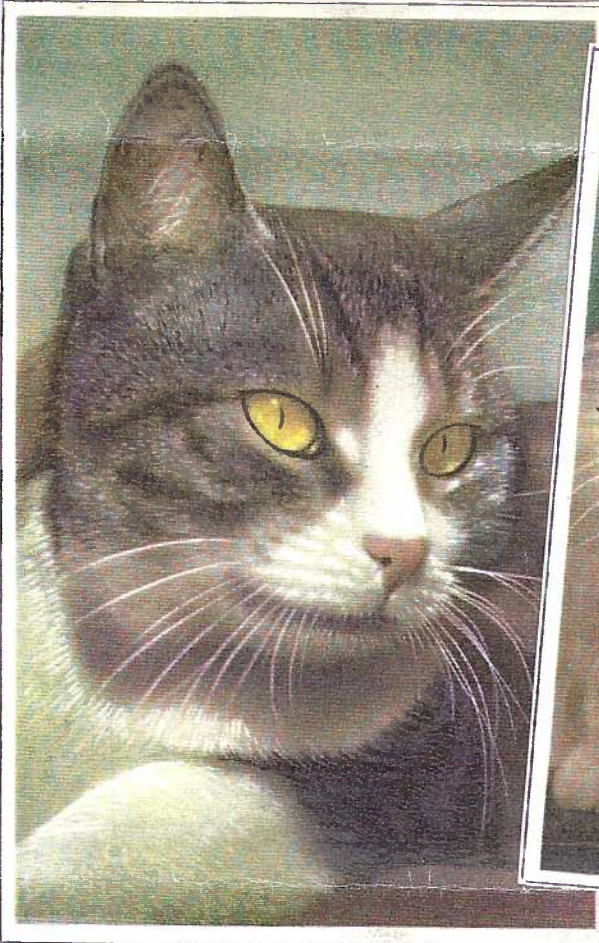
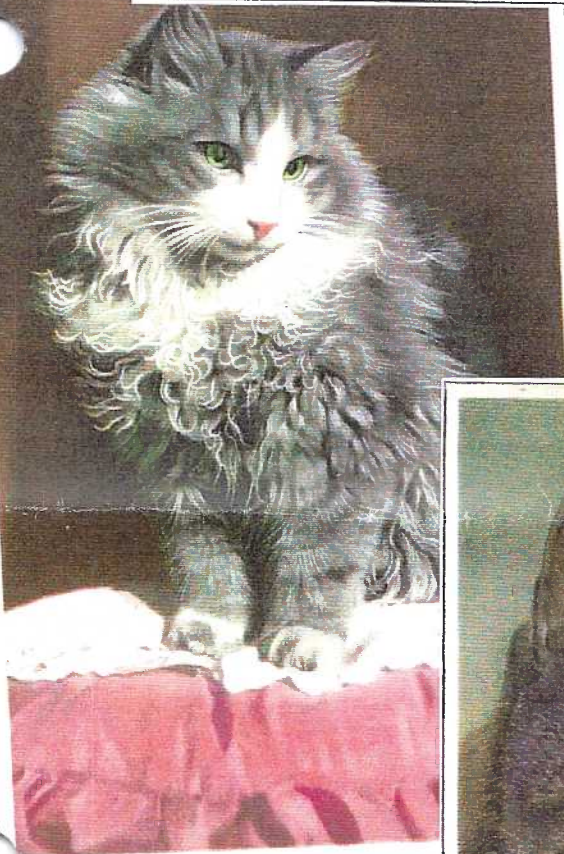


**THE CARD** Vol. 13, No. 4, Issue 148. *Enjoying postcards through education and entertainment.*

Monthly publication of The Lancaster County Postcard Club, Lancaster, PA.

Next Meeting: Mon., April 15, 2002. Buy, sell, trade from 5:30 p.m. Meeting at 7 p.m.

Club and Editor's address: LCPC c/o Jim Ward, 1795 Kleinfeltersville Rd., Stevens, PA 17578-9669 or [mid-creek@ptd.net](mailto:mid-creek@ptd.net).





## MONTHLY COMPETITION

Boards in March were Green or had Green themes. 57 members and guests enjoyed the variety and competition was keen. The Exhibit Committee decided to award two First Places since they tied, even on a re-count. No one screamed, cried or went home mad, like folks did one time in Florida.

Bryan Benner **First** Green Houses  
Jim Ward **First** Greenbacks (frogs) and their Buddies  
Walter Mowrer **Third** Wearing of the Green

### Honorable Mentions

Harold Moyer Wearing of the Green  
Doug Milliken G. G. Green (his hotel, etc.)  
Sandra Shaub Greetings o' Green  
Mary Ann Guntow Irish Dreaming in Green  
Earl Carver In Honor of a Saint

Thanks go to all the participants for their efforts. April's topic is **Smiling Faces** and you're invited to bring one card and mount it on the club table easel for everyone to preview beforehand.

## This 'n That

### The Plain Lady on South Queen Street

Once again she surfaces in our *Card*. Newt Groff recalled the scene and found his July 1941 issue of the National Geographic, pg. 48, with the identical view. George Brown had found a city directory where the saloon was the Red Cross Tavern. Your editor's directory, of a different year, lists it as Red Rose.

### March Winners

Tom Beck and Marilyn Leese won door prizes (100 postcards sleeves). Jim Morrison was the lucky recipient of \$25 = half of the 50/50. He was seen immediately spending it at a nearby table.

### Set Up and Selling in March

were Howard Steinberg (back on his feet - but taking it easy), Walter Mowrer, the Bishops, Dede Schaeffer, Jim Ward, Paul Weidman and the Moyers. Speaking of whom -

### Surprise! Surprise!

Ruth and Harold Moyer had a terrific surprise for us in March. They had embroidered (not printed) the Lancaster County Postcard Club's logo on jersey sport shirts and offered them for sale. Black logo on white shirts in M, L, XL are \$13; white logo on maroon shirts in L and XL are \$15, XXL are \$18. They will have more at the April Free-for-All. You may phone them at 1-717-336-6644. Mailing will be extra.

### Recipe Book Number Two

Betty Beck reminds us there is no need to wait until the winter holidays to think of sending her a favorite recipe for the club's second edition booklet. It was available to just those in attendance at the Christmas party/meeting.

## Expo News

The Moyers will not be operating the kitchen this year. Any member in the club who is interested in the job should contact Jere Greider, Expo Chairman, immediately. He can give you the details.

Ruth will, however, be chairing the Exhibits for the Expo and her committee (with the approval of the Directors) tells us the four categories for Expo exhibits will be:

Famous People, Transportation, Animals, Humor

You may enter boards in any or all of the categories. Be certain to designate on the back of the board (with your name) the category for the board. Applications for exhibiting will follow in a future *Card*, but now is the time to get busy. Prize-winning boards aren't made in the 11<sup>th</sup> hour.

## Directors Meeting Decisions

We will purchase a small desk light to ease those presenting projector programs in the dark.

Announcements of future shows will be made at the meetings by Dede Schaeffer.

Spouses of past presidents will pay full price (\$8) annual dues.

The National Postcard Week entry for our club, Fulton Opera House's 250<sup>th</sup> Anniversary, is ready for the printer at this writing.

The Annual Picnic will be at Jim Ward's home on Sunday, June 23, meal served at 1 PM.

### Windows to Our Past, Volume One

The box of 16 *Windows to Our Past* books saved from 1998 will be disposed of this way:

The display/used copy will be put in our library, bringing the total in the library to three. One book will be kept aside in mint condition for posterity. The remaining 14 (fourteen) copies of *Windows One* are available immediately to members for \$50. This is the price new copies have been selling for during the past twelve months. Any copies unsold until August 17, will be offered to the public at that price - \$50.

### Windows to Our Past, Volume Two

The book will *not* be offered at a pre-publication price to the public. It will be available to the public for \$30 at the Expo on August 17 and afterwards until sold out.

LCPC members will be able to purchase the book the day of the Expo for \$25 and at that \$5 discount until the October meeting, if not sold out. Mail orders must include \$7 additional for postage and handling. Send no book purchase checks before August 10, 2002.

LCPC members are invited to lend the club money to cover the cost of printing. They should give their check for \$500, or increments of \$500, any time, to Ray Dennis on or before May 30, 2002. The club will keep the money for use of publication of the book only, until all loans can be re-paid at one time (about 7 to 9 months). For each \$500 loaned, the member will receive, at the Expo, one free book. Loan checks should be made to LCPC Book Fund and sent to Ray Dennis, 136 River Bend Park, Lancaster, PA 17602.

*Volume Two* will contain 501 postcard views, as did *Volume One*. *Volume Two* will have twice as many color views as the 48 in *Volume One*. Cost for *Volume Two* will obviously be higher, but we are holding the price to \$30.

Call Bryan Benner at 391-8127 to reserve the table or portion of a table you will need for the April Free-for-All. Anyone may set up to buy, sell or trade for the entire evening at no cost.

Our Internet website is running. Visit us at <http://www.playle.com/clubs/lancaster>. Playle's Online Auctions sponsors it. Doug Playle is the Webmaster who built it.



## NEW MEMBERS

#630 **Marilyn Wolgemuth** 2323 Beacon Hill Rd., Lancaster, PA 17601. Ph. 717-569-2148. General interest with some emphasis on Mt. Gretna and Columbia and environs.

#631 **Jill L. Marzolf** 114 Cider Dr., York Springs, PA 17372. Ph. 717-528-8059. Photo postcards by C. Laughlin esp. of Newburgh and Shippensburg.

#632 **Vera E. Albert** 130 New Haven St., Mount Joy, PA 17552. Ph. 717-653-5296. Collects Mount Joy and surrounding area. Vera is regarded as one of MJ's most enthusiastic and knowledgeable historians.

Welcome, ladies, to our friendly, little club.

Please note this correction from the March issue: **Harriet Snyder's** phone number should be 717-464-0576 (not 0376).

Word of **Leo Frantz's** health is that his road to recovery with chemo has been trying. With our constant thoughts and prayers he will be on the road to full recovery soon.

**Anne Valsing** informed us at the Morlatton Show that her husband, Charles, had passed away in January. Charles, #241, was an ardent stamp collector while Anne collects PCs of the PA Turnpike, Harrisburg and neighboring counties. Anne, #144, has a new address: 312 Lamp Post Ln., Camp Hill, PA 17011-1460. Our sympathy is extended to her and her family.

## FUTURE SHOWS

Apr. 27-28 Great Eastern Book, Paper, Adv. Show in Allentown at the Fairgrounds.

May 4 South Jersey Postcard Club Show at Mt. Laurel, NJ, Days Inn.

May 11-18 Brimfield Paper and Postcard Marathon at the Brimfield Antiques Event, Brimfield, MA

May 24-25 Postcard Society Show at Hagerstown, Plaza Hotel.

## NOTE

The York Postcard Club's 12<sup>th</sup> Show at Aldersgate Church on July 6 is an event. It has NOT been cancelled as stated in the April issue of *Postcard Collector*. It is John McClintock's Mt. Laurel, NJ on July 12-13 that has been cancelled. The York Show is a good one sponsored by a number of York and Lancaster member/dealers. Please plan to attend.

## IN THE NEWS

**Maria Schurz** notes that postcard articles have appeared recently in *The Paper & Advertising Collector*, "Vintage Postcards from French Creek," and "Bucks County, PA Postcards on Exhibit" in the *Antiques & Auction News*.

As to the latter item, our good friend, Betty Davis, WC4 editor, will play major roles. "Greetings from Bucks County" is an exhibit scheduled to run from April 13 through November 30 at the Mercer Museum, Pine and Ashland Sts., Doylestown, PA.

Betty will offer an overview of typical themes in postcard collecting on opening day at 2 PM. Larry Hale will cover the Yardley area at 3:30 PM.

On June 9 at 1 PM, Betty and her daughter, Heather Mumbauer, will present a slide program that traces a century of postcard images, spotlighting Mercer and Fonthill Museums.

Collectors' Displays and Gallery Talks will highlight activities on Sept. 21 and 22 with author Tom Range and Betty Davis.

For more information call 1-215-345-0210 or [www.mercermuseum.org](http://www.mercermuseum.org).

## Cover Cards

This month's card competition is Smiles. I began checking for smiles under Children and found a few, but not enough to fill our April cover. Then an e-mail came through from Linda Mylin. Linda works at the Gittlen Cancer Institute, a branch of Penn State College of Medicine at Hershey.

Her note explained why two of our regular attendees, Kathy Kreider and her daughter, Ngoc, have not been to our meetings this year. Ngoc has recently undergone surgery and will begin chemotherapy as soon as her strength is back.

One of Ngoc's favorite postcard themes is Cats, and so Cats appear on our April cover. If you can muster up an extra cat postcard – or *any* postcard greeting – she will surely appreciate hearing from you. Her address is 300 W. Maple St., Palmyra, PA 17078.

Our prayers and thoughts are with you, Ngoc. We wish you a full recovery.

The cards are by Alfred Mainzer, a Belgian printer noted for his long series of dressed cats and dogs doing people things. These are beautiful color photos printed in the 1950s on matte surface. Your editor likes most cats but claims ignorance to species names.

If you're a cat fancier, send us the names of the feline types and we'll list them next month. Identify them by: top row Left and Right, middle L and R and bottom row L and R.

**The Journal of the Postcard History Society**, March 2002 issue has been mailed to current subscribers. If you haven't received yours, it will be in the return mail on receipt of \$7 for 2002 or \$13 for 2002 and 2003.

As we go to press, we've just heard of the death of Her Majesty, Queen Elizabeth, the Queen Mother, on March 30. She appears, lower right, as consort to King George VI at his coronation. The PC is by an unknown Japanese publisher.





## LARGE LETTERS

The Post Office does a few things right. One of those things is the reason your April Card is a few days late. The first day the new 50-state "Greetings from America" stamps were available was April 5, 2002.

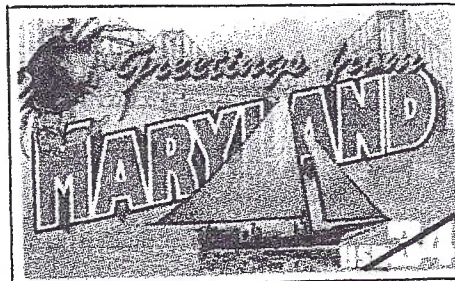
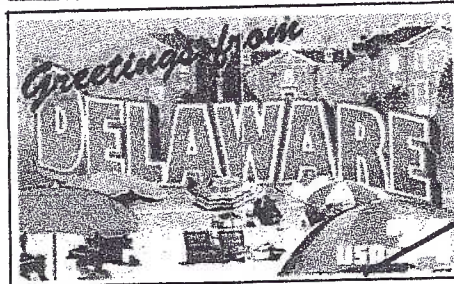
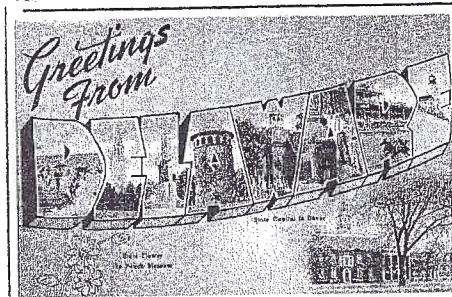
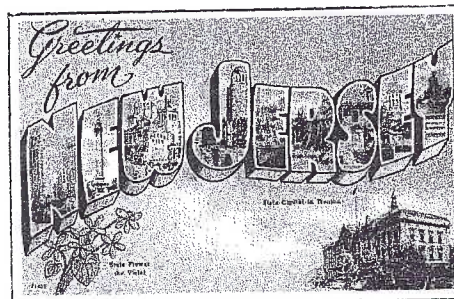
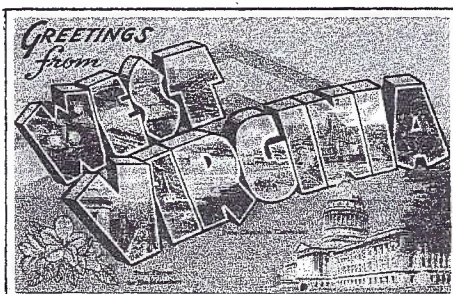
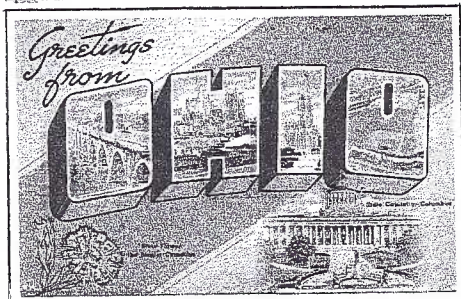
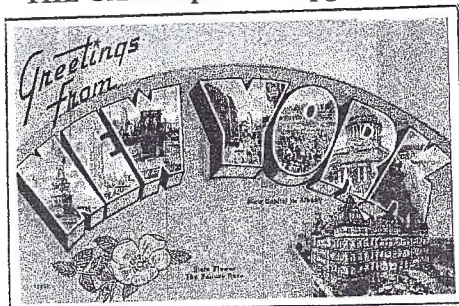
Your Mailing Committee tries to have *The Card* in the mail on or about the 4<sup>th</sup> of each month. Member #100 sets her calendar by it (if it's late, your editor – her brother – hears about it!) So this issue should arrive on or about April 8<sup>th</sup> and on the cover will be one of those 50 stamps.

In the left and right columns of this page are examples of six state stamps along with their counterparts from 60 years ago, old linen Large Letter postcards. You can distinguish the stamps with their 34¢ denominations.

The stamps were designed by Richard Sheaff and illustrated by Lonnie Busch. The PO says, "They celebrate our nation through the colorful look of souvenir postcards from the '30s and '40s. Each stamp depicts the landmarks and recreational activities that make each state special to visit. The back of each stamp lists when the state entered the Union, along with the state flower, bird, tree and capital."

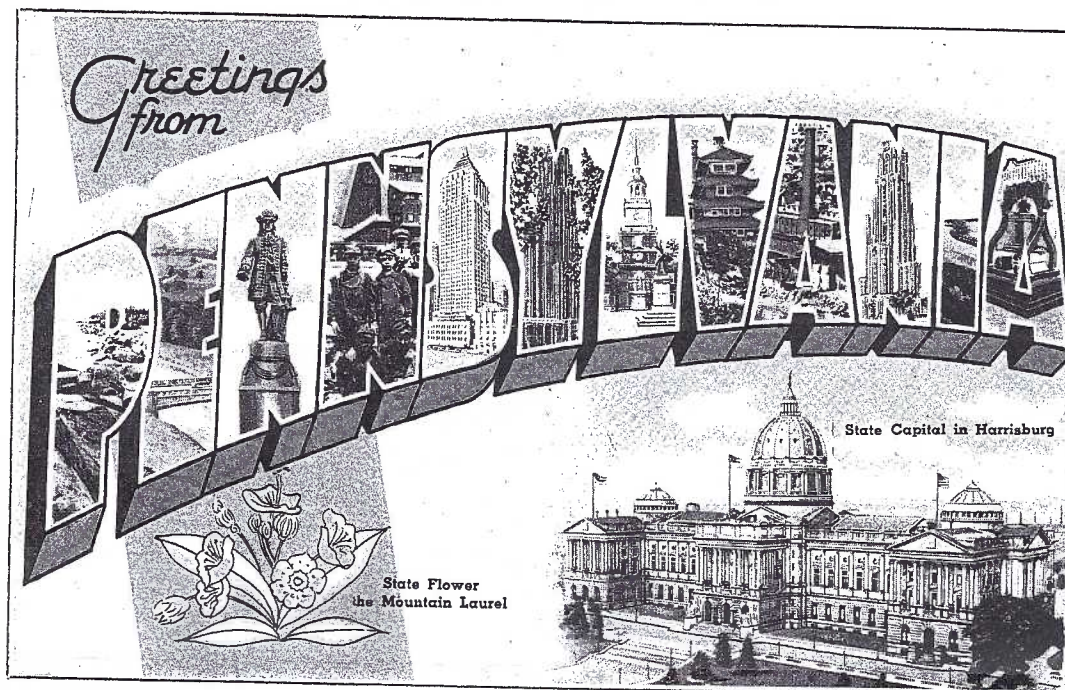
The stamps lack the finesse of the old linen cards with the multi-views captured in each letter, but they are a worthy attempt and, most of all, they turn the country's attention to another phase of our hobby.

Have you've guessed why these six states were chosen? It just happens they all border Pennsylvania, which you'll find on the next page.



Your 2002 dues must be paid or this will be **your last issue of *The Card***. Just as important, when *Windows to Our Past, Volume Two*, is available at our Annual Expo in August, **you will not be eligible for the \$5 discount allowed to members only**. (The public will not be offered a pre-publication discount, as was the case with *Windows, Vol. One*.) It created unnecessary headaches. Send your check to LCPC c/o Gisela Withers, P. O. Box 191, Geigertown, PA 19523. \$8 for one member, one year, \$2 extra for each member at the same address.



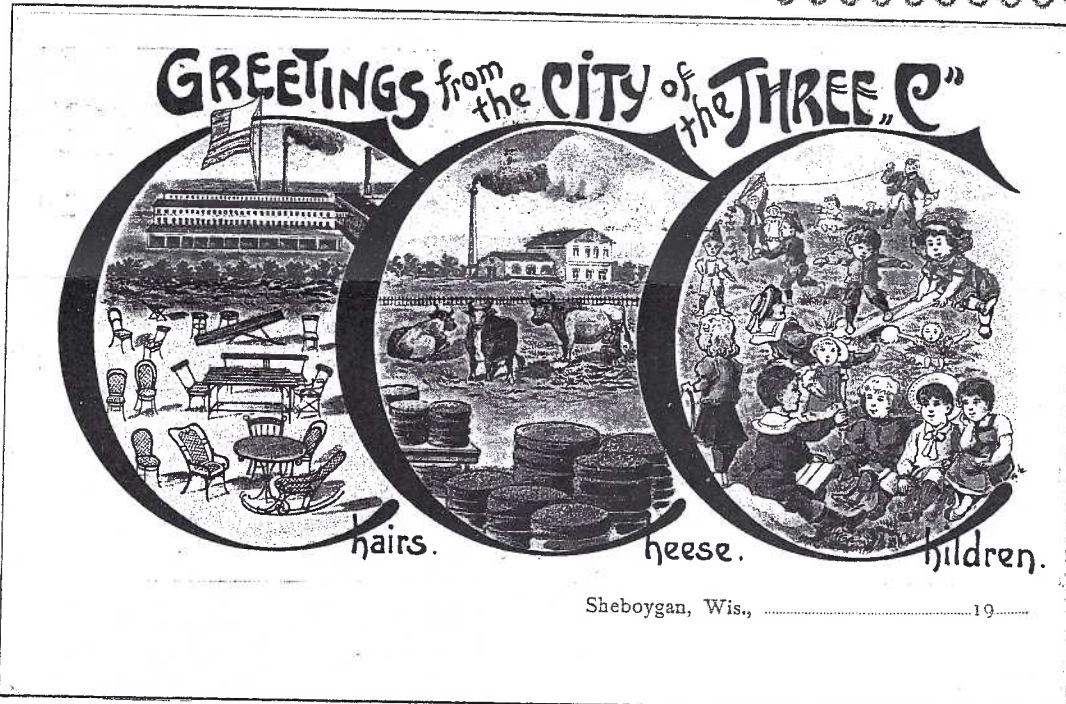


The USPS representation for the Pennsylvania large letter stamp includes the Liberty Bell and a cannon at Gettysburg.

### LARGE LETTERS continued

Curt Teich and Tichnor Bros., among others, produced the two most popular sets of 48 state cards. (Hawaii and Alaska joined the Union in 1959 and 1960.) The linen cards we've chosen to show in this article are from Tichnor.

Pennsylvania is #71162. On the reverse is its nickname (Keystone State), the 1940 population (9,900,180), the area in sq. miles (45,126) and when it entered the Union, (Dec. 12, 1787). Representative scenes were used in spelling the state's name. The closest to Lancaster seems to be the pagoda (V) at Reading. Tichnor also chose to include the state flower and capitol on the front of their cards.



Large Letters have appeared on postcards since the golden age (c. 1904 -1914). Large single letters may have been used to teach youngsters their alphabet. (See next page). This unusual large letter card was p/u in 1910 and mailed from Sheboygan, Wisconsin. "The City of the Three C" repeats the letter for Chairs, Cheese, and Children. We know Wisconsin is famous for its dairy herds and cheese products. It's obviously proud of its children. At one time, the city of Sheboygan had at least one huge factory manufacturing chairs. In fact, they had a baseball team known as the Sheboygan Chairs! The message contains no reference to the City of the Three Cs.

12" transparent ruler, T-square combo, just \$3. The best idea since the wheel. It saves time and eliminates unneeded aggravation when you lay out your postcards for exhibit boards. (Only ten available.) Pick one up at the April meeting. You've asked for them - semi-rigid sleeves for better cards. \$18 per 100 in stores. Buy them for \$12 per 100, \$3 for 20. Polypro sleeves still \$1.50/100, \$4/300, \$12/1,000. 3-hole ultra-pro pages \$3/20 \$15/100. See Jim Ward at meetings.





In addition to the attractive girl, the child adds desirability to the studio real photo representing A, left. The undivided back has a Swiss stamp. P/u to Ogontz, PA.



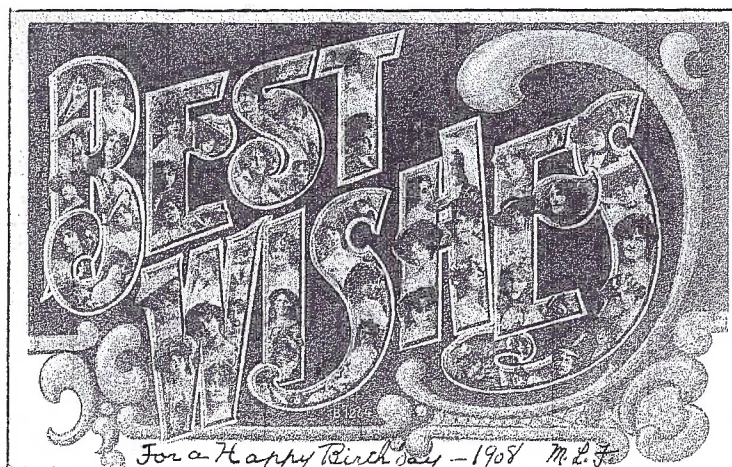
Photo card, left, by RPH, includes no less than a dozen beauties encased in the letter B. The divided back of this unused card has Post Card written in 17 different languages – a perfect example of multi-lingual usage.

Below, letter C is from a popular alphabet series #994. The publisher on this colored card is unidentified, but the "inland postage" reference gives it an English origin. P/u in 1908 to and from Lititz, PA.



Perhaps one of the best known of the floral postcard artists is Catherine Klein. To the left is her letter E. Her signature on the p/u d/b card appears, faintly, in the lower right. "C. Klein" is beneath the two leaves.

The Rotograph Co. of New York published many nice Large Letter Greetings laden with ladies. Best Wishes, below, was printed on bromide paper. P/u 1906.



Large Letters come as a Greeting or as a View.  
Why not look for just a single card or two -  
One for them and one for you?