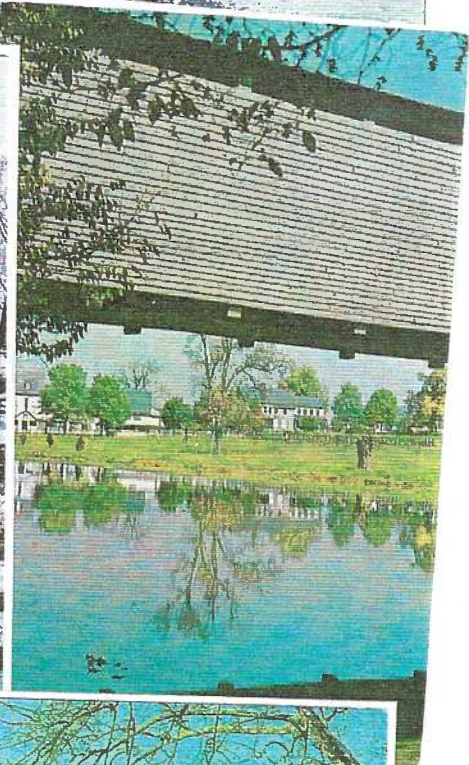
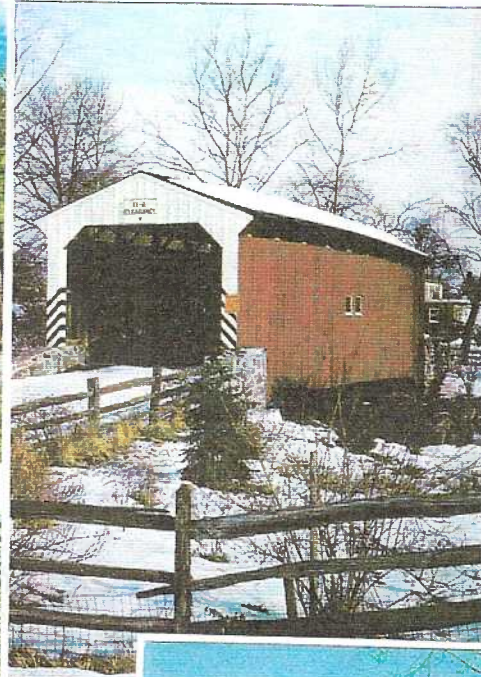
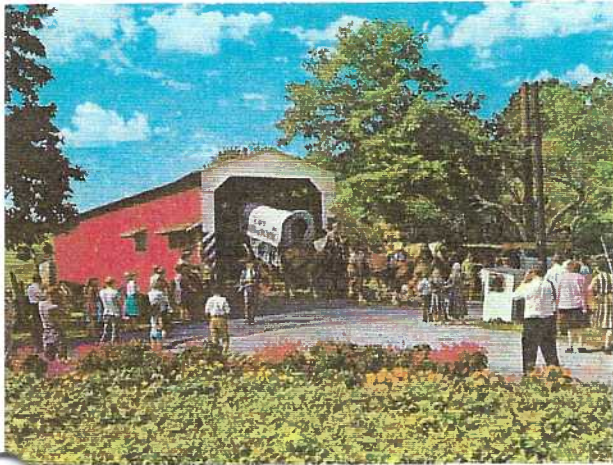
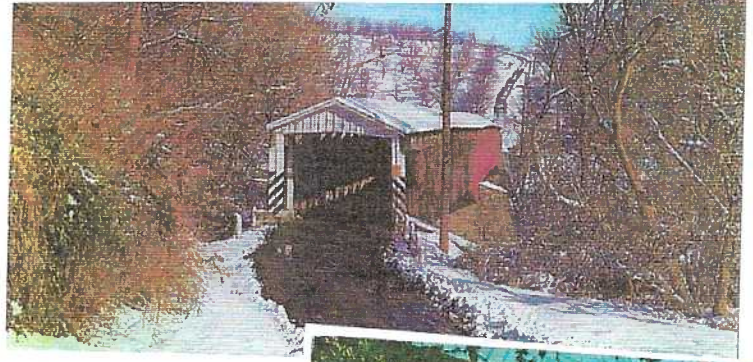
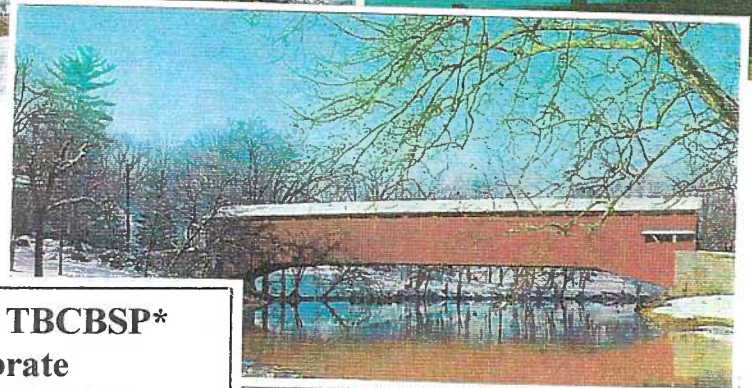


**THE CARD Vol. 13, No. 5, Issue 149. *Enjoying postcards through education and entertainment.***  
**Monthly publication of The Lancaster County Postcard Club, Lancaster, PA.**

Next Meeting: Mon., May 20, 2002. Buy, sell, trade from 5:30 p.m. Meeting at 7 p.m.  
Club and Editor's address: LCPC c/o Jim Ward, 1795 Kleinfeltersville Rd., Stevens, PA 17578-9669 or mid-creek@ptd.net.



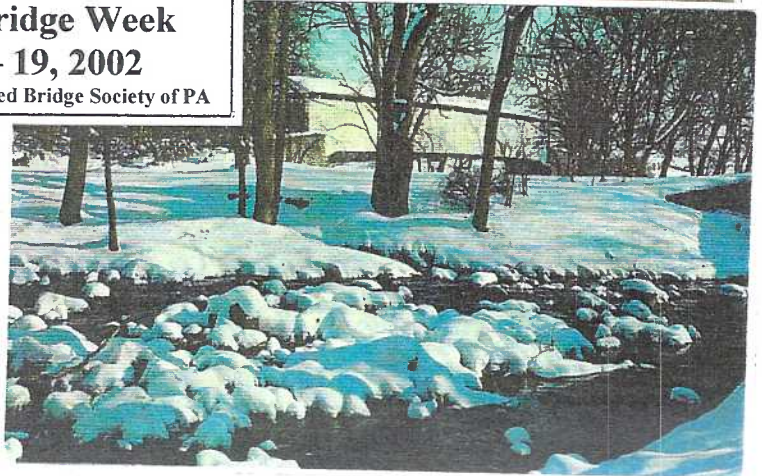
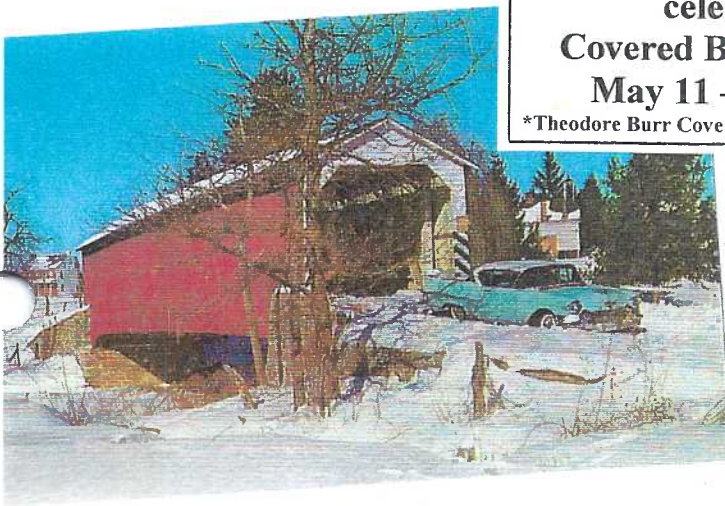
Old Factory Bridge, Williamson Park,  
Lancaster, Pa.



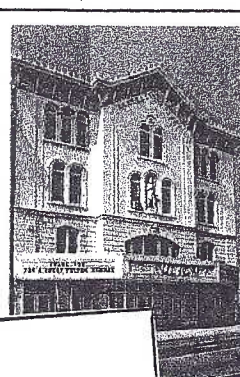
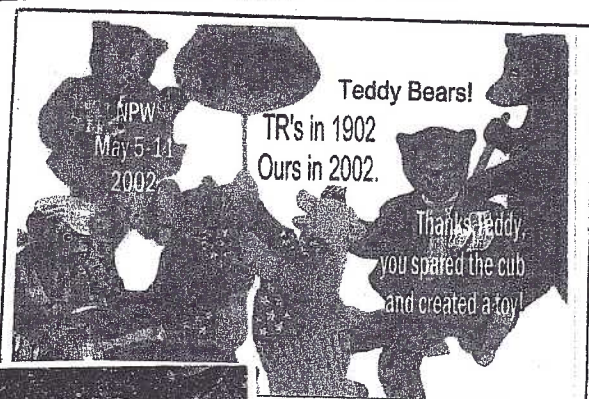
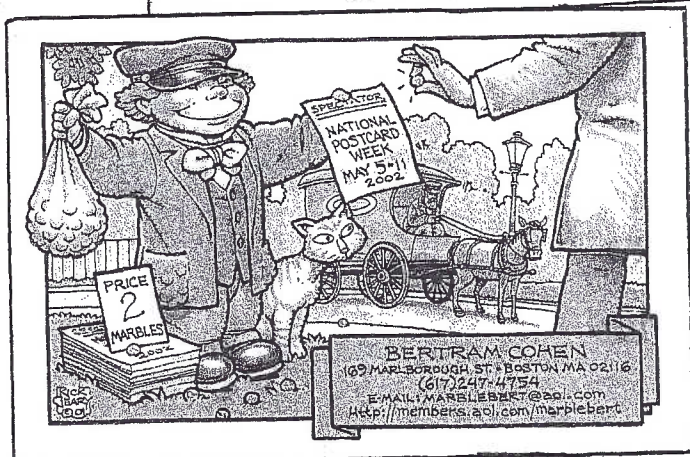
**LCPC and TBCBSP\***  
**celebrate**

**Covered Bridge Week**  
**May 11 – 19, 2002**

**\*Theodore Burr Covered Bridge Society of PA**

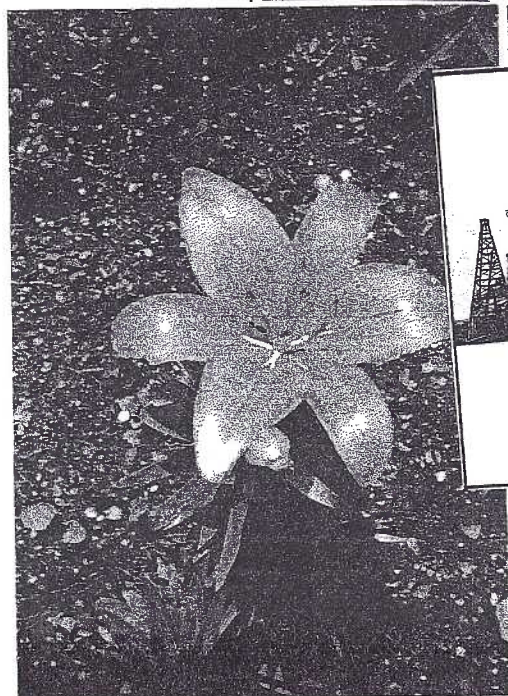
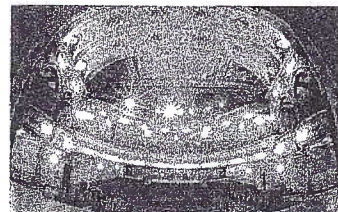




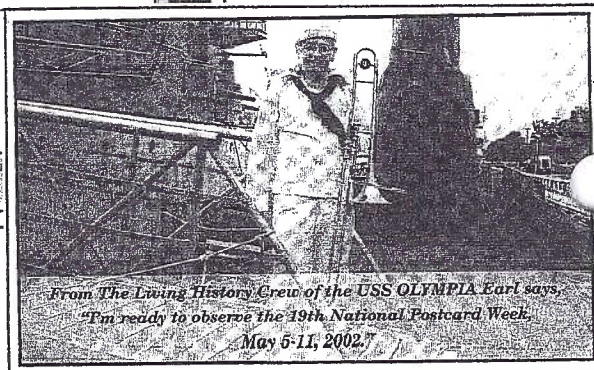


Fulton Opera House  
Lancaster, Pennsylvania  
Celebrating 150 years  
1852 - 2002

National Postcard Week May 5 - 11, 2002



"I'm ready to observe the 19th Nation  
May 5-11, 2002."



From The Living History Crew of the USS OLYMPIA Earl says,  
"I'm ready to observe the 19th National Postcard Week.  
May 5-11, 2002."

## NPW

By the Founder, John McClintock

Several times in the 20<sup>th</sup> century someone came up with the idea of a postcard day, week or month. While the ideas seemed good, they just did not "grab" public interest thus they fell by the wayside.

In 1983, as editor of the *Postcard Dealer & Collector* magazine, I thought it was time to try again for a postcard holiday. The late Deedee Parker agreed to contact the ten existing postcard clubs west of PA, while I did the same in the East and South, discussing the idea of launching a national postcard week. The voting ended in a tie with May and August. A late vote for May ended the tie.

It was at this point I suggested **National Postcard Week** be held the first full week of May. Through the clubs and magazines it was advertised that NPW would begin May 1984.

The idea behind "our week" was not only to enjoy making and trading the cards, but to put something back into the hobby we take so much from. It was my opinion collectors of the future would seek the NPW cards for their own collections.

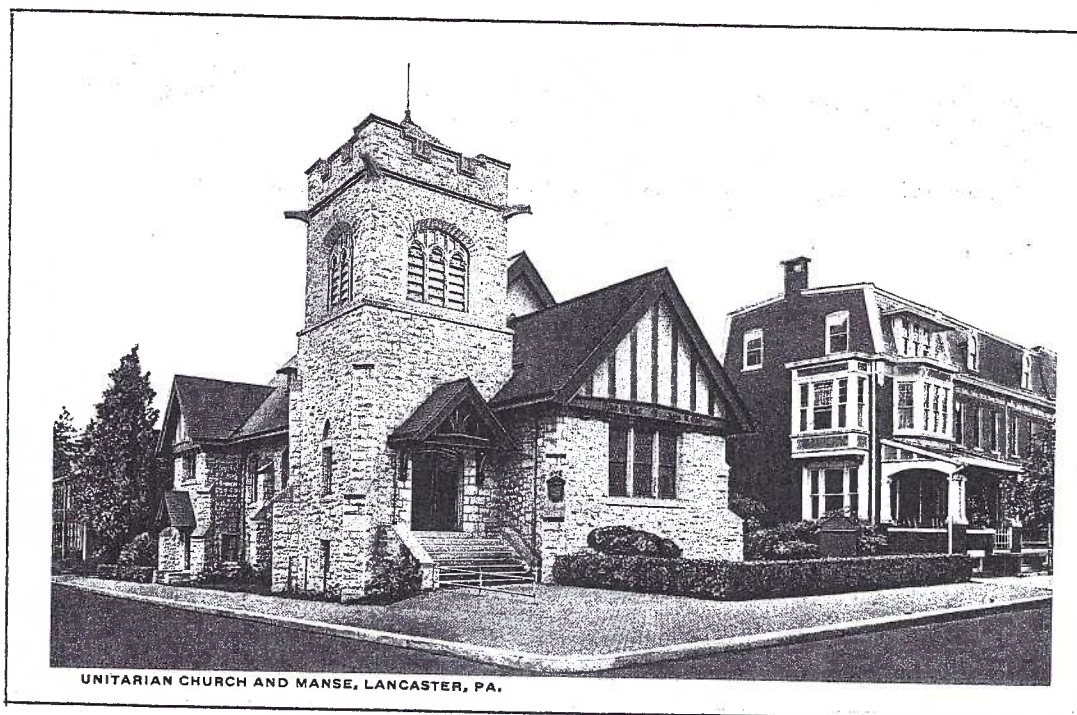
One doesn't have to be an artist to create a card, as there are many artists and printers to help design and print. Some collectors have only 50 NPW cards made while many have 100s. Some use existing PCs and add a sticker proclaiming NPW.

Many folks wish to trade their cards, card for card, while others sell them for 25¢ to \$1 each plus SASE. Some want them mailed during NPW while others want them sent under cover.

Through the issue of NPW cards, we are insuring collectibles for the future.

Descriptions  
on page 6.





UNITARIAN CHURCH AND MANSE, LANCASTER, PA.

## Unitarian Church Celebrated

*100 Year History by J.W.W. Loose*

The Spring 2002 issue of *The Journal of the Lancaster County Historical Society* has an excellent history of the Unitarian movement in Lancaster. Its author, John Ward Willson Loose, is not just the *Journal's* editor but also happens to be a 50-year member of the church.

Loose's expertise as one of our most learned local history scholars is reflected in the 30-page story. He gathers the personalities involved in the congregation's origin and growth – merchant Milton Garvin banker Warren Rehm, a handful of Quakers, a Radcliff graduate, several teachers and more – all liberal thinkers “ready for a church advocating a form of Christianity based on belief in love of a merciful God, and encouraging spiritual growth founded upon a living faith.”

This *Journal* issue, along with other back issues and local histories, is available in the Society's Gift Shop and Book Store at 300 N. President Ave., Lancaster, PA 17603. You can reach the website at [www.lanclio.org](http://www.lanclio.org) or phone 392-4633.

## MONTHLY COMPETITION

The subject was **Smiling Faces**, the entries were many, and the card subjects varied. The crowd loved them all. We thank all of these participants: Betty Beck, Tom Beck, Earl Carver, Don Davis Bonnie Gable, Jere Greider, Bill Guntow, Mary Ann Guntow, Bob Kramer, Betty Kreider Marilyn Leese, Carolyn Middleton, Doug Milliken, Harold Moyer, Ruth Moyer, Joe Myers, Dede Schaeffer, Harriet Snyder, Betty Sowers and Jim Ward.

Winners were:

Dede Schaeffer **First**

Jim Ward **Second**

Carolyn Middleton **Third**

The subject for May is the letter B. This will be board competition. For June (picnic meeting) a single card – birds; for July, the letter D, a board.

Lucky winner of the 50/50 in April was Don Davis. The door prizes were won by Bryan Benner, a 12" T-square for aid in making poster board displays and by Ray Bubb - 100 postcard sleeves.

Curt Teich of Chicago printed this view of the Unitarian Church at W. Chestnut and Pine Streets. The company's records show the church's request was processed July 24, 1916. C. E. Urban was the architect for the stone building. The full color white bordered card includes the first church manse to the west. In 1972, a growing congregation necessitated razing the double houses to the west and building a stone addition. It houses offices, church schoolrooms and a meeting hall.

Two earlier b/w postcards were published soon after the original stone edifice was finished in 1909. The D. B. Landis card is captioned “Church of Our Father (Unitarian), Lancaster, Pa.” The second card is unidentified but has the appearance of an L. B. Herr card. Both of these early PCs are similar views.

## MEMBERS

#633 Suzee Gritz 745 W. King's Hwy. Coatesville, PA 19320. Ph. 1-610-383-4886. Collects swimming pools, Chester County, floods, fires and Halloween.

Current address for Sherry Danz #310 (she's serving our country at Lemoore Naval Air Station) – P. O. Box 1264, Lemoore, CA 93245.

Member Chair Gisela Withers reports there are still about 39 members not paid for 2002. They will not receive this issue of *The Card*. If they ask you why, you can tell them. Send \$8 for one member plus \$2 for each additional at same address, to Gisela Withers, P.O.Box 191, Geigertown, PA 19523.

We were surprised and so pleased to see Ngoc Kreider at the meeting with her mother, Kathy. Ngoc is much improved and happily buying cats. She thanks the members who so generously sent her cat PCs while she was homebound.

### Leo Frantz

Leo Frantz, a long-time friend and respected postcard dealer, died on April 16. Leo was from the old school – he kept his prices reasonably low, put aside cards for his faithful customers and was always the gentleman - whether you were buying or browsing. He and his wife, Helma, for many years sent their regular customers free admission cards for the Morlatton shows which they attended twice a year. Leo was fair, honest, had a great sense of humor – a genuine natural. He will be missed by many.



## Our Readers Write

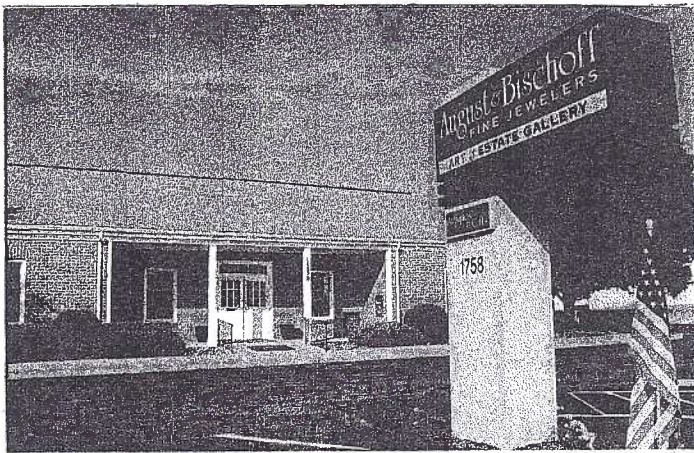
From Joe Motonis (#511) in W. Sunbury, comes this unsolicited but much appreciated card with an interesting message. It's p/u Sept. 22, 1911.

"I have wanted to write you yesterday but have been so busy with school work. My room is where cross is marked. Such a quaint old house – big magnolia tree and two larch trees (European) on this side of the house. I will write a letter tomorrow. Am well and quite contented only 'tormenting' busy."

The "cross" that writer Helen refers to, is at the third floor windows. More details on the Lancaster College are in the October 2001 issue of *The Card*.



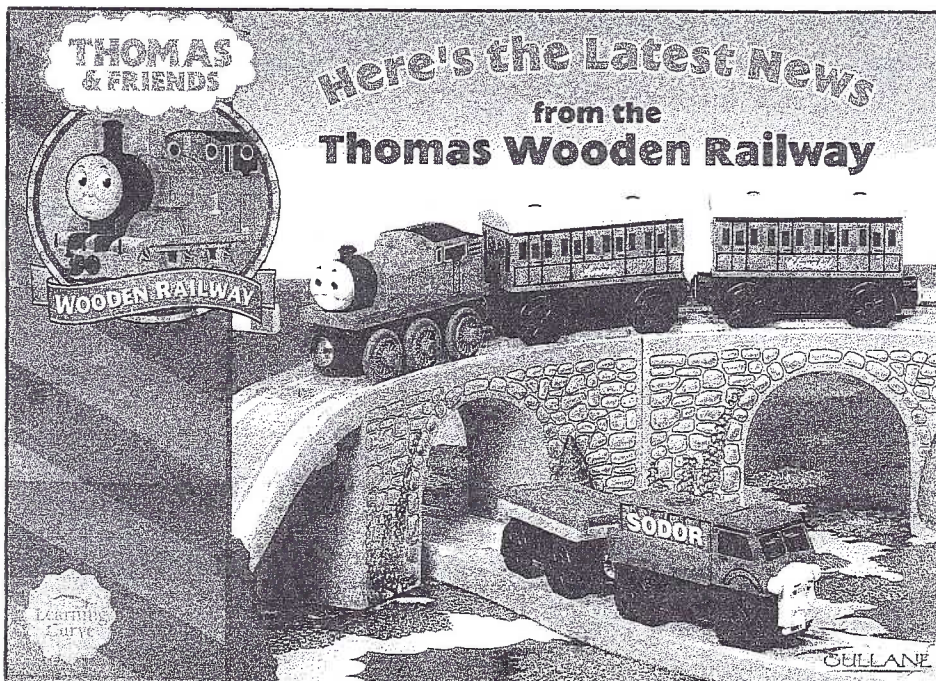
DORMITORIES, LANCASTER COLLEGE, LANCASTER  
L. B. HEER PRINT



From the Sunny South, we hear once more (and always glad to hear from her) that Jo Jednacz has made two discoveries. She found a sixth "postcard" in the Self-Stick series. We covered these in Issue #129. Hers is a generic covered bridge with "Pennsylvania Dutch Cooking" along the bottom edge.

Jo's second discovery (mis-filed, she says – and how often have we all done that!) is another in the group of homemade PCs with local flavor. It's a magazine (?) picture of an Amish man "endeavoring to balance a steam tractor on a teeter-totter at Kinzer."

Thanks, Jo. Never be embarrassed to send us "stuff." Yours are delightful envelopes to open!!



Railroader and member #48 Bill Seigford sends us two PCs. The 4" x 6" chrome is by August Jewelers and Bischoff Goldsmiths at 1758 Oregon Pike, Lancaster. They advertised (with an applied sticker) an April 12-13 art exhibit. You were also invited to view additional artists' work at their store. The Bischoff name will be remembered by older Lancasterians as a jewelry store on Prince St. in the 1960s.

Bill also submitted a larger 5" x 7" postcard that he reckoned might "attract the 'little ones' and maybe it will help the PC hobby to attract youngsters." It was published by Learning Curve International, Inc. with a 2002 copyright by Gullane (Thomas) Limited.



## Cover Cards

Our May cover celebrates "See PA Covered Bridges Week," so proclaimed each year by Pennsylvania's governor. We need not go beyond our county borders to find excellent examples of covered bridges – past and present. Reading top to bottom, left to right:

*"The Paradise Bridge" on Mel Horst PC #16124.* It's actually recorded as the Londonvale or Jacob Eshelman's Mill or Evergreen Mill bridge; spans the Pequea Creek between Leacock and Paradise Twp., ½ mi. ne of Leaman Place on Belmont Rd.; built in 1845, rebuilt in 1893; 16' wide – the widest in the county.

*"Second Lock Covered Bridge" is on Jas. Hess PC #44579-B.* One of the most beloved local bridges it was arsoned Jan. 20, 1968. Also known as Snaveley's or Haverstick's Mill Bridge, it was the longest CB in the Middle Atlantic States. The County kept it in good repair for exactly this reason. The double Burr arch truss of twospans was 339' across the Conestoga. The nearby lock of the abandoned Susquehanna Canal gave it its popular name.

*The Soudersburg Bridge" on Jas. Hess PC #49785-C.* Also known as Benj. B. Herr's or Lincoln Lefever's Mill Bridge; spans Pequea Creek and is now part of Mill Bridge Village on S. Ronks Rd. Considered by many to be "the most photographed Cb in the USA."

*The Willows Bridge is on LCPC #1, published by our club in 1990. It was printed by Dynacolor Graphics as #P57956.* This data was cropped when the card, mistakenly printed by the agent as a 4" x 6", was cropped to the specs ordered by LCPC = 3 ½" x 5 ½". The bridge is composed of two demolished bridges and erected near the former Willows Restaurant on Route #30. More details are on the card that is still available for 25¢ or 5 for \$1 plus SASE.

*"Zook's Mill Bridge" on Mel Horst PC #16129.* Known as the John Wenger's or Henry Zook's Mill Bridge, it was next to a fine old mill (now gone) at Rose Hill Rd. and Log Cabin Rd. The clap board siding shows on this "under bridge" scene – unique to Lancaster County covered bridge postcards. Merv Wenger, LCPC member #9, sees it from his living room window.

*"Old Factory Bridge, Williamson Park" is on a Woolworth PC #R-26434.* The Old Factory, Humesville or Sunnyside Bridge was at the end of S. Duke St., spanning the Conestoga Creek on the way to Williamson Park and Rocky Springs Amusement Park. It's name derives from an old mill and group of homes built here as early as 1812. Carding, silk, matches, fulling and woolen all lent their names to the nearby mill for more than 100 years.

*Umble's Mill (Eden) Covered Bridge on Jas. Hess PC #43732-B.* Known also as Geo. Ehrhart's Mill, Israel W. Groff's Factory, J.K. Umble's Mill and Eden Bridge; the present mill erected in 1845 was a fulling and carding mill; in later years it was a paper mill. The bridge spanned the Conestoga ¼ mi. east of Eden on Route #23. Suspected of poor condition, a gallant effort was made to preserve it, however, it eventually succumbed to the wrecking ball only to be discovered by the contractors to be exceptionally strong.

**MAY PROGRAM** Russell Holmes and his wife, Martha, LCPC members #81 and #82 are also noted covered bridges. Russ will present a slide program of Covered Bridges. His credentials speak for themselves. He has been a member of the Theodore Burr Covered Bridge Society of PA, Inc. since 1980, Treasurer for the past 15 years. The Society has between 600 and 700 members, 60% of whom reside in Lancaster County. While a member of the National Society for the Preservation of Covered Bridges, he coordinated the collection of data on all the CBs in PA for that society's 1989 edition of "World Guide to Covered Bridges." Martha and he have studied and photographed 872 authentic, historical covered bridges (100 in Europe) plus another. Bring your UNKNOWN COVERED BRIDGES for a possible I.D.

## April Meeting

WOW! A full house! VP Bryan Benner had it right when he ordered the room be filled with 25 tables and 75 chairs. Your monthly census taker fell down on the job but, in retrospect, it would be a fair guess to say nearly all (70) of the chairs were filled at one time or another. Members occupied part of a table or even two tables to spread out their paper wares. And the shoppers were as happy as the sellers. Prexy Beck made a few announcements and we proceeded to make it an evening of Buy, Sell and Trade.

Sellers included: the Bishops, Earl Carver, Don Davis, the Dennises, Gwyn Fulmer, Bob Kramer, the Middletons, the Moyers, Dede Schaeffer, the Schurzes, Sandra Shaub, the Smokers, Jim Ward and Norman Zimmerman.

### Recap of Windows, Vol. Two - Loans, Sales

Ray Dennis mentioned he already received a check for loan of money towards *Windows, Volume Two*. To recap: if you lend LCPC \$500 or more for an unlimited time (in 1998 it was about 8 months) you will receive a FREE book for every \$500 loaned. Make your check to LCPC Book Fund and send c/o Ray Dennis, 136 River Bend Dr., Lancaster, PA 17602. Books will NOT be available until Expo Day – August 17, 2002; then the "free" books will be distributed and members may also buy at a \$5 discount (\$25) for 60 days – until the October LCPC meeting night (unless sold out sooner).

The public will be paying \$30 starting on Day One. Please do NOT send orders, as they will be trashed. We are not keeping books as we did in 1998. It is a tedious time-consuming job. Have someone pick your books up for you if you can't make the Expo. Out-of-state members make arrangements with a local member to accept your books (give them your check).

The 14 books of *Windows, Vol. One* (1998) were available at the club table for \$50. One was sold. The remainder will be available to LCPC members until sold or the day of the Expo when they will be available to the public at the same price.

## May Program

Slide Presentation and  
Possible Covered Bridge  
Identifications.

*"Forrey's Bridge" on Jas. Hess PC #44575-B.* This bridge is correctly identified except for the misspelling. It spans Big Chicques Creek between Ralpho and W. Hempfield Twp. ¾ Mi. west of Farmdale on Bridge Valley Rd. Built in 1869, it was damaged Feb. 1986. The county's 4-man bridge crew had it completely repaired by June at the trucking company's expense.

*"Wintertime at Shand's Bridge" on Mel Horst PC #34989.* Named, on the card, for the nearby Shand summer home, it's also known to CB enthusiasts as Miller & Nolt's Point Mill or Pinetown Bridge. Its former white color is gone. (The only local bridge still with white siding is between Ephrata and Akron on Rettew Mill Bridge Rd.) This Pinetown Bridge can also be seen on a b/w PC "at the confluence of Lititz and Conestoga Creeks."

## POSTCARD AUCTION

Monday, June 3, 2002

Springetts Fire Hall, East Market St., York, PA

Preview at 3 PM, Sale at 5 PM. Auctioneers – Gilbert & Gilbert

Write for detailed catalogue of 350 lots to Gilbert Auctions, 264 Forge Hill Rd., Wrightsville, PA 17368

Two fine postcard collections are offered for your enjoyment. The York Collection includes a wide range of greetings highlighted by a Bessie Pease Guttmann, Roosevelt Bears, dozens of Blacks and Hollywood and Western arcade stars. There are many, many small dealer lots of holidays include Valentine children, Easter animals and Patriotics as well as dozens of Santas. You'll find a scarce Kirchner New Year card, a Taft-Blaine political, a Lusitania and a Zeppelin and more than 30 lots of York City and County and Neighboring Towns; Comics, Foreign and Sports round out this collection.

The Maryland Collection is highlighted with Hold-to-Light Holidays and Views, fine early Santas, Clapsaddle and Brundage Children and great Halloweens. There are scarce Teddy Roosevelt and McKinley Politicals, Kewpies, Mechanicals and European Royalty. Early unusual Advertising Postals and Postcards along with good Trade Cards round out this fine collection.

This is a great auction with something for everyone. Plan to attend. Write for catalogue today.

## National Postcard Week

Cards submitted for *The Card's* 2002 NPW page are shown on page 5 and described here, from top to bottom.

**Bette Mays** from Hobe Sound, FL always uses Rick Geary's art and features her cats, O'Bear and Missy along with their neighbors' pets.

**Bert Cohen**, the marble man from Boston, also engages Rick Geary for his annual marble theme. This year Bert will not trade, but sell only for \$1.75 plus SASE. He's always traded his great colored PCs, but some collectors throw together last-minute-cheapos and this year he's decided to lay his own ground rules. I don't blame you, Bert, maybe you do have all your marbles, after all!

**Jim Ward's** color card reminds us that Teddy Roosevelt refused to kill a bear cub in 1902 and in so doing created the Teddy Bear. Bears are shown from several popular bear postcard sets.

**Our club's** Fulton Opera House NPW card has been included with this mailing – one per family. 300 were printed and extras may be purchased for 50¢ plus SASE.

**Earl Bucken** has put his photograph of a beautiful tiger lily on his 4<sup>th</sup> NPW card. He enclosed two cards – one for LCPC's collection and one for the editor.

**Anne Valsing** has chosen Bradford, PA with its early oil fields, libraries and teachers education. This is her 14<sup>th</sup> NPW card,

**Earl Carver** has once again found a way to show him and his slush pump on his NPW card. Earl has been making NPW cards since the early years.

## Future Local Shows

May 4 - Mt. Laurel, NJ, Days Inn, South Jersey Postcard Club Show

May 24-25 Hagerstown, MD Plaza Hotel

June 2 Danville, PA, Days Inn, Susquehanna Valley Postcard Club Show

June 8 - Towson, MD, Days Inn 10-5

June 22 - Fort Washington, PA Expo Center 9-5

July 6 - York, PA Aldersgate Church 9-5  
York Postcard Club Show.

Aug. 17 - Lancaster, PA Farm & Home Center,  
Lancaster County Postcard Club Expo

## Postcard Books

It seems LCPC isn't the only entity engaged in postcard publication, although few groups or individuals have taken on the task of a hardcover book with over 500 local views.

### Conshohocken in Vintage Postcards

*Postcard History Series by Arcadia Press*

This is one of more than a thousand small paperbacks published to date by Arcadia Press. The authors, Phillip and Sharon Welsh, are familiar faces in Lancaster County. They are "regulars" at local shows as well as the area antique markets.

The couple lives in Norristown and has the history of nearby Conshohocken well documented in their book. Arcadia, I've been told, does require at least a few non-postcard photo views and for us PC collectors, the photos are kept to a minimum. The format and sequence as well as the selection of subjects for the town are excellent. If you're familiar with the area, this is a must have book.

The least expensive method to purchase this 200-view book is to write to Phillip Welsh, 226 Woodlawn Rd., Norristown, PA 19401. He sells it for \$20 incl. tax and postage. It can also be seen at Barnes and Noble stores or on the Internet from Amazon. Most of these Arcadia editions are small runs. Don't wait too long to make your decision.

### Pennsylvania Dutch Country

Another in Arcadia Press's Postcard History Series is *Pennsylvania Dutch Country* by Tom Range Sr. Tom is a long-time member of Washington Crossing Card Collectors Club (WC4). He has published postcard books previous to this one. I've yet to see a copy of PDC but, based on Tom's past performances, it should be comprehensive with good quality cards.

He tells me in an accompanying note that many of the cards were acquired while he was associated with the Metropolitan Postcard Club.

As with the Conshohocken book, you can get details here: [www.arcadiapublishing.com](http://www.arcadiapublishing.com).

### Lower Bucks County

A newspaper article has also come to me concerning what appears to be a third Arcadia book, *Lower Bucks County* by Andrew Herman, the second of his books. Again, check the Arcadia website or local bookstores.