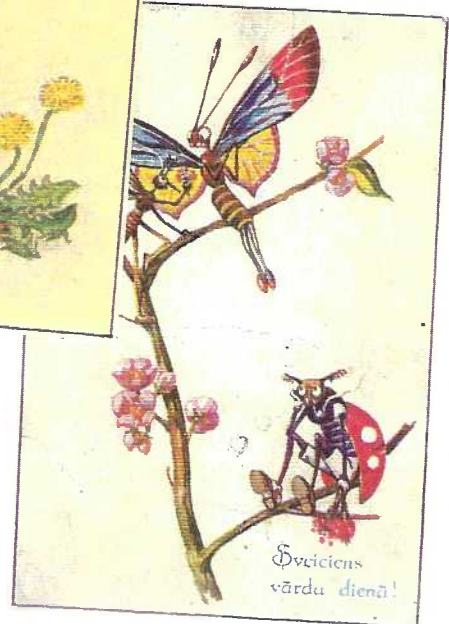
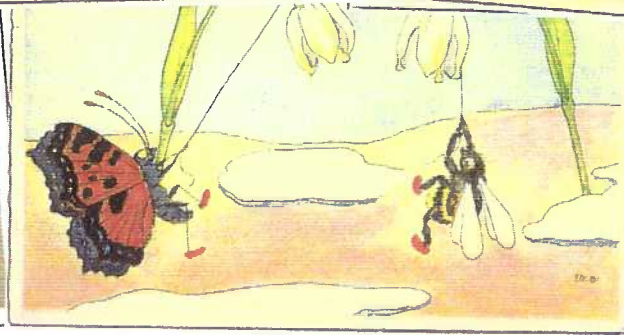
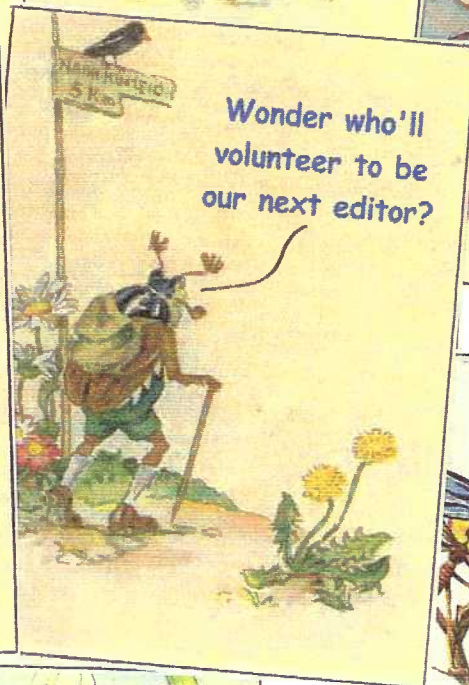
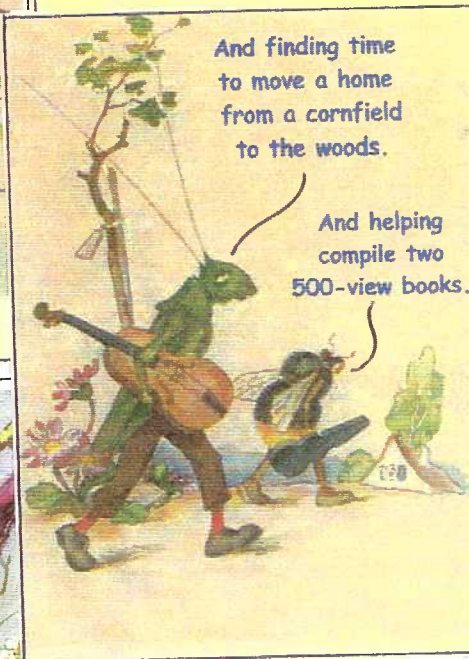
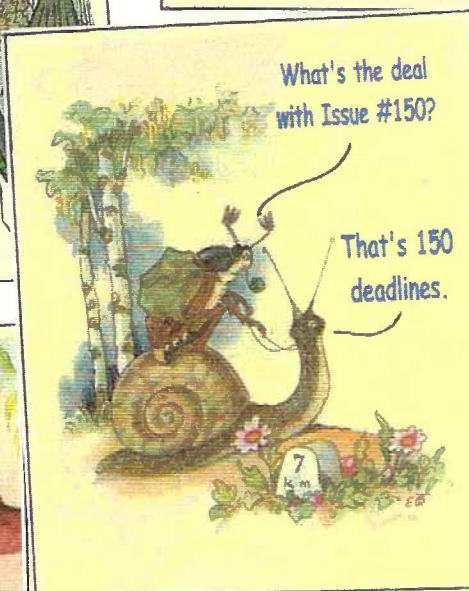


**THE CARD Vol. 13, No. 6. Issue 150. Enjoying postcards through education and entertainment.**

**Monthly publication of The Lancaster County Postcard Club, Lancaster, PA.**

Picnic Meeting: Sat., June 15, 2002. Buy, sell, trade from 1 p.m., Meeting 3 p.m., Meal 4 p.m.

Club and Editor's address: LCPC c/o Jim Ward, 1795 Kleinfeltersville Rd., Stevens, PA 17578-9669 or mid-creek@ptd.net.





## Windows Two Report Up-date June 1, 2002

### Comparison figures

The postcards selected total 520 (501 in Windows One). There are 109 in color (48 in Windows One) and 411 black and white (453 in Windows One). Remind your friends of the *increase in total* as well as the *increase in color*. They're still getting a terrific bargain – a hard cover, 200-page book for \$30 with no pre-publication discount.

### Member Only Discount

You, as an LCPC member, are permitted a discount of \$5 per book from the day of sale until the October meeting, unless they are sold out before that day. All members will receive their books (no pre-orders) on August 17 at LCPC's Annual Expo.

### Printing, Profit and Postage

The number to be printed remains at 2000. Expenses for the additional color will be more, but there will still be a small profit. Copies that *must* be mailed will be charged an additional \$7 for postage and handling but the committee discourages this practice.

### Contributing Members

The postcards were selected from this year's club members' offerings as well as some from those contributed cards that were not used four years ago. This will be the reason some of our members may wonder why their names appear on the accompanying list, even though they offered no cards in 2001-2002.

### Scanning, Proofreading, Timetable

The printer has scanned cards in groups of 80 to 100. Each group takes about 5 working days. (Four years ago they scanned about 50 every three days.) Members should not be without their cards for more than a week. Many of the exact cards were taken from the committee's files if available. Additional cards that were needed were collected at the May meeting. The book committee should have proof views to examine before the end of June. The manuscript will be in the printer's hands by then. It will be proof read by the committee by mid-July and delivery of the finished product will be on schedule for the August Expo.

The following will appear in *Windows Two* –

## POSTCARD CONTRIBUTORS

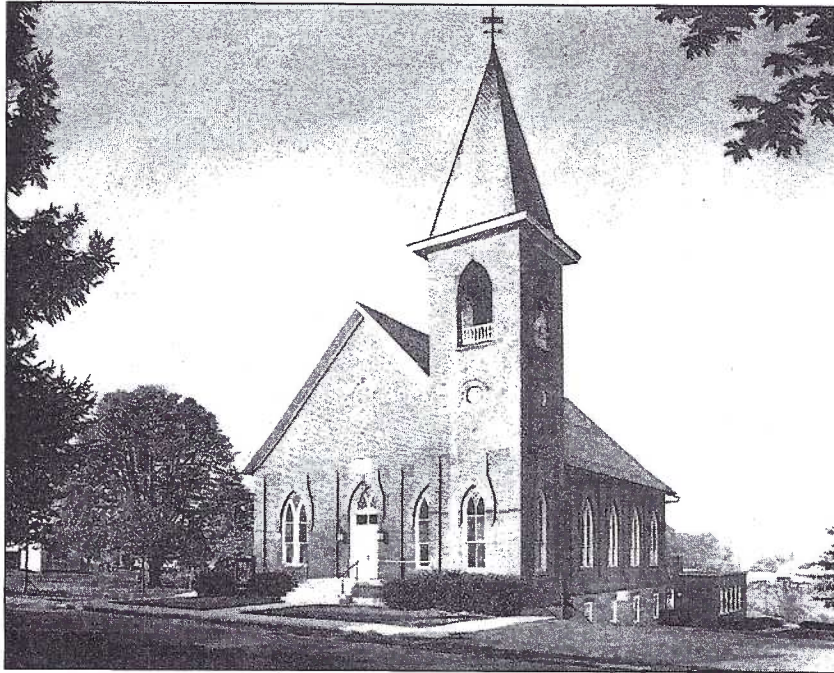
All members of the Lancaster County Postcard Club were invited to loan postcards from their collections for inclusion in *Windows to Our Past, Volume Two*. Each member who offered cards had at least one chosen from his or her collection. We are grateful for the time most of these members took to research their cards. The Book Committee also contributed much time in research.

Dorothy G. Aument  
Tom and Betty Beck  
Bryan S. Benner  
John I. Blanck  
Connie and Bill Bracken  
Donald R. Brown  
Jack Brubaker  
Ray Bubb  
Willard Buckwalter  
Earl C. Carver  
Mary E. Darrenkamp  
Arlene Davis  
Donald Davis  
Ray and Carol Dennis  
Brian and Ruth Frankhouser  
Dawn Fry  
Dorothy V. Fry  
Gwyn Fulmer  
Harold K. Galebach  
Nancy Gambler

Doris Gates  
Elizabeth P. Graver  
Betty A. Gregg  
Jere Greider  
Charles O. Groff  
J. Newlin Groff  
Margaret "Peg" Hanna  
Ed Harris  
W. B. Heisey  
Ralph Homsher  
Gerald A. Hostetter  
Marian "Jo" Jednacz  
Mary Kirk  
Robert Kramer  
Betty Kreider  
John Long  
Elizabeth MacDonald  
Doug Milliken  
Jim Morrison  
Walter Mowrer

Harold and Ruth Moyer  
Joseph G. Myers  
Sam Nolt  
John Rodkey  
Jose and Aida Rodriguez  
Dolores and Leon Rowe  
Dede Schaeffer  
Paul Smoker  
Betty Sowers  
Howard and Anne Steinberg  
Leighton Stover  
Jim Ward  
Betty Jane Weaver  
Mervin L. Wenger  
Frederick Yohe  
Vivian S. Ziegler  
Norman L. Zimmerman

**Cover Cards.** Spring was here and nearly gone. Our attention's now on gardens and lawn. Look real close and you're bound to see, an insect or two making eyes at thee. Fantasy is a popular theme on postcards. Our June cover is filled with **Fantasy Insects**. *Top left*: Herr Grasshopper woos a friend, signed by E. Kreidolf; *Top center*: ladybugs and friends dance about a Mayapple; *Top right*: a pensive mail caterpillar hopes he can make his delivery and get in one piece; *Center left*: caterpillars accompany a birdie serenade; *Center right*: birds look on as a caterpillar turns on the lantern flowers; *Lower left*: a colorful moth becomes the little boy's kite; *Bottom center*: butterfly and bee waken the neighbors with two Spring Beauty bells; *Lower right*: Miss Dragonfly with successful and rejected suitors. The center four cards include May or June bugs (depending on when they emerged from the ground), a grasshopper and the lone mollusk on the cover – a snail. Their messages are quite apparent. Cards were published in Europe; most unidentified.



*St. Paul Evangelical Lutheran Church*

### New Penryn View

At LCPC's May meeting Harold Galebach showed this new b/w postcard view of the Saint Paul Evangelical Lutheran Church at Penryn. The congregation published only 1,000 views, *each numbered*. The church celebrates its 250th anniversary this year. Cards are 50¢ or 5 for \$2 plus SASE. Send a check made to Harold Galebach, 1517 Newport Rd., Manheim, PA 17545. Phone 665-3635.

## May Meeting

### Program

Sixty-three members and three guests thoroughly enjoyed the covered bridge program presented by Russ Holmes. He and Martha made the trek from Seven Valleys, PA (way down in lower York County). Were it closer, they readily admit they'd be regular attendees.

Russ covered the structural varieties of CBs and showed an abundance of bridges including many from Lancaster County. He was a worthy substitute for Mary Darrenkamp who had been scheduled for the subject. Mary has gone through more knee surgery and we're happy to see she's able to get about again.

### Set-up

Set up and selling were the Bishops, Mike Middletown, Dede Schaeffer, the Schurzes, the Moyers, Jim Ward and Howard Steinberg. Anne Steinberg has recuperating from foot surgery and we trust it will be a speedy one.

### Prizes

Door prizes were won by Joe Myers and one of the guests while lucky Ruth Lines (did you see the article about her and Harry and their good fortunes?) won the 50/50.

### Expo Report

Jere Greider reported that 19 of the 24 dealer tables were accounted for and he expected others momentarily. The 4-H group will man the kitchen this year. See elsewhere in this issue for Expo Exhibits and Application Form.

### Harold Moyer - Cocalico Valley

Harold Moyer was scheduled speaker at the Cocalico Valley Historical Society's meeting on May 22. His subject covered postcard views of that area. In addition, Harold had a fine display of 16 PC exhibit boards. He promoted LCPC by handing out back issues of *The Card*, showing our club's published cards and encouraging new memberships.

### Windows Book One

Several more of our first books were sold at the May meeting for \$50. There are less than 12 remaining. If you know someone who missed getting his or hers, this could be his or her final chance. Those books remaining in August will be offered to the general public at the same price. Contact Pres. Beck at 626-7732.

### Windows Two Report

Jim Ward was collecting postcards from members for scanning by the printer. The following day he dropped off *that* group of cards and received back the first group of postcards along with their proofs. The first group of proofs is excellent! We can expect another fine book from Science Press (now known as Cadmus Corp.).

### Future Programs (Tentative Titles)

VP and Program Chair, Bryan Benner, listed the following programs for the remainder of the year:

June - Picnic at Jim Ward's home

July - Christmas in July at Jim Morrison's National Christmas Center (free tour included)

August - Harold Moyer's Cocalico Valley PC Views

Sept. - Bob Epler's Lancaster City Views

Oct. - Annual Auction

Nov. - Brian Frankhouser's New Holland PC Views

Dec. - Annual Christmas Dinner

### Thinking about an Exhibit Board?

The 12" transparent ruler and T-square combo is just \$3. It saves time and eliminates aggravation when arranging your boards. Pick one up at the meeting. Polypro sleeves 100/\$1.50 300/\$4. Ultra-pro pages 25/\$4.50 \$15/100. Jim Ward. Phone 721-9273 for home delivery.....just kidding.



## Expo Exhibits

Now is the time to not just think about your exhibit boards, but to begin choosing cards, researching the subject and arranging layouts. Boards are to be 22" x 28", held vertically. White is preferred but not required. A title should be near the top. Information may be included near postcards if it adds to the display.

No frames, foam backings or covers are necessary. The club will provide new, huge bags that will envelope your entire board so it can be mounted without harm to the giant easels. Some members are veterans at displays and will be happy to answer questions if you're a first-time exhibitor. Contact Earl Carver, the Mowrers, the Moyers, Don Davis or Jim Ward.

Ruth Moyer chairs the Exhibit Committee this year. She lists the following as categories for our 10<sup>th</sup> Expo: Famous People, Animals, Humor and Transportation. Complete this form (or a copy of same) and send to Ruth as soon as you know what you intend to exhibit. Deadline for exhibits is August 15. You must have your boards in her hands by that date or bring them Friday night, August 16, to the Farm & Home Center between 6 and 8 PM or Sat. 7 to 7:30 AM.

### 2002 EXPO EXHIBIT FORM

Mail this form or a duplicate to Ruth Moyer, 135 Whitehall Rd., Reinholds, PA 17569. Ph. 336-6644. You are encouraged to enter all four categories. If you intend to use two boards (maximum) in any one category, please note this below. Include your titles now, if at all possible. This form must be in Ruth's hands on or before August 15, 2002.

Judges, selected from the dealers on Saturday morning, before the show, consider the following criteria:

Postcard Information 1/3

Presentation and Originality 1/3

Condition, Completeness and Rarity 1/3

1<sup>st</sup>, 2<sup>nd</sup> and 3<sup>rd</sup> places receive \$15, \$10 and \$5 in each category. *Best of Show*, chosen from the 1<sup>st</sup> place exhibits, receives \$25. *Peoples Choice*, chosen by ballot, receives \$25. All entries receive a specially designed 2002 Expo Award postcard.

I will have an entry in the categories listed below-

Famous People \_\_\_\_\_

Animals \_\_\_\_\_

Humor \_\_\_\_\_

Transportation \_\_\_\_\_

Member's Name \_\_\_\_\_

Member's Phone Number \_\_\_\_\_

## June - The Month of Marriages

*Marriage* is not scarce, nor is it a common topic on PCs. More often than not, you'll find it in the Comic category at a dealer's stand. The top card, *Friday 13*, is from Series #769, 12 designs of Comical Kids. The publisher is unidentified. The bottom comic, *Before and After The Wedding Bells*, is linen #74386 by Nyce Manufacturing Co., Inc. of Vernfield, PA.

## Monthly Exhibits

May might have felt like March, but LCPC members continue to show up, 60 to 70 every meeting. Do you know LCPC has one of the best monthly attendances in the country? Only a couple of clubs that meet from noon until evening on weekend days can match our numbers. Good programs, varied activities and member-dealers turnout all account for our success. Invite your friends, especially while we have good weather and daylight saving time.

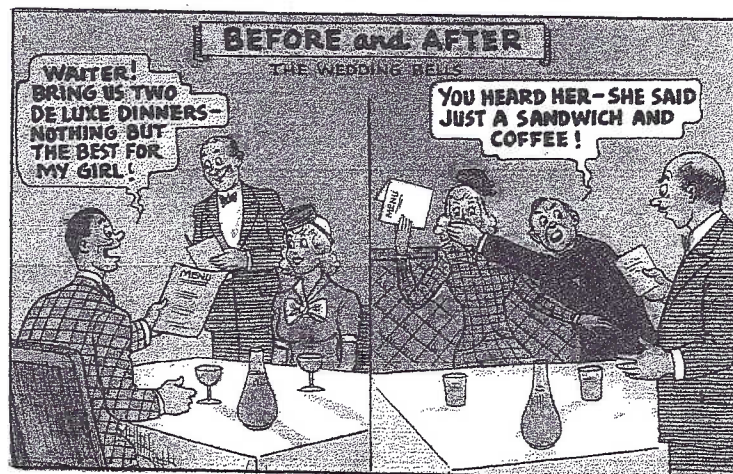
Subjects in May began with the letter B. Of course a wide range of themes was predictable.

<b>Earl Carver</b>	<b>FIRST</b>	Baptism Fonts
<b>Jim Ward</b>	<b>SECOND</b>	Bad, Bad Boys!
<b>Brian Frankhouser</b>	<b>THIRD</b>	Blue Ball, PA

### Honorable Mentions

<b>Doug Milliken</b>	Bountiful! (Detroit's)
<b>Harold Moyer</b>	Bears
<b>Joe Myers</b>	Baseball
<b>Mary Darrenkamp</b>	Birthdays are Happy Times
<b>Martha Grove</b>	Historic Baltimore
<b>Don Davis</b>	Tom Browne
<b>Bryan Benner</b>	Buildings

June's subject is **Birds** and it will be a single card.





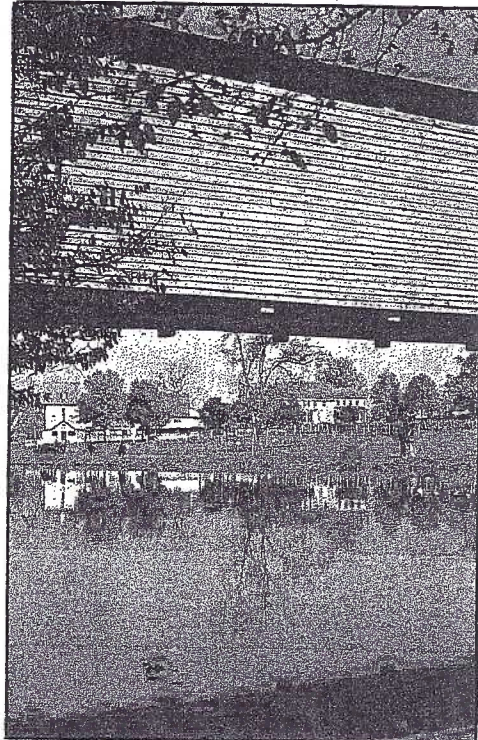
## Mis-Identified Covered Bridge

On May's cover, celebrating Covered Bridge Week, the gray bridge was wrongly identified. The card on the right, second row, is an unusual view. It shows water beneath the bridge span and a farm in the distance. Your editor referred to it as John Wenger's or Henry Zook's Mill Bridge and that was part of Merv Wenger's scenery from his living room window.

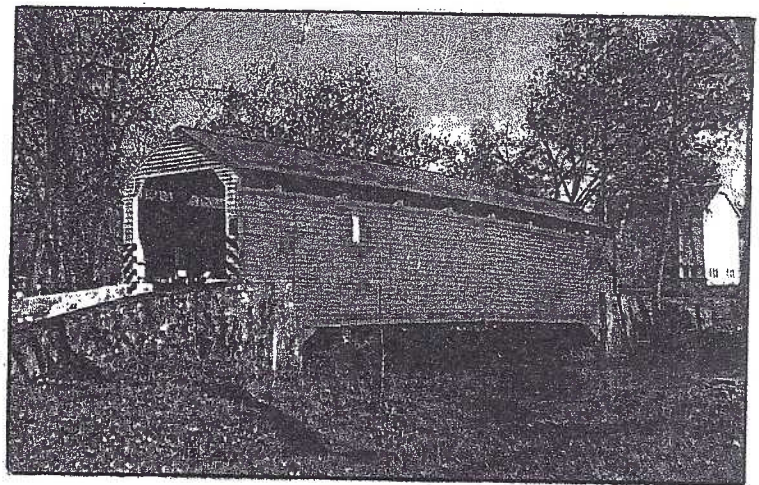
Of course, the Wengers know better. Now, so does your editor. The following is an explanation from Merv.

"Thanks for the recognition of Wenger's Mill (Rose Hill) Bridge in *The Card*. I could be wrong but I don't think the card is of Zook's Bridge near our home. It is confusing because different publications in the past used the same name for two different bridges. Zook had a mill across the bridge from our home so it's easy to see why it could be named Zook's. I thought it was the bridge by our house but yet I knew the farm in the background was not possible for Wenger's Mill Bridge. Also, I have written on my card of the "gray bridge" Bushings K42, information you gave me some years back."

Merv was exactly right about its being Bushing's bridge. (See accompanying map and location.) One of the problems bridgers encounter is several names for the same bridge, depending on what family/which generation is considered when naming a bridge. The K number Merv refers to, is Tom Kipp-horn's number. Tom is probably Lancaster County's single most experienced covered bridge historian. Had your editor studied Tom's notes more carefully, the error might have been avoided. An apology is here offered.



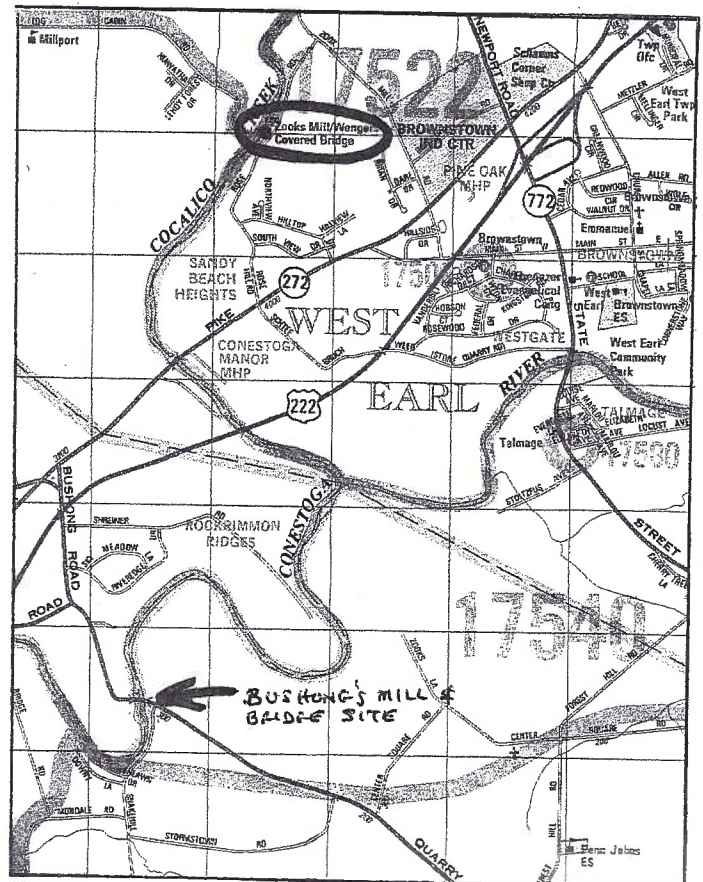
**Bushong's Mill Bridge or Zook's Bridge** was on Bushong Rd. (Manheim Twp.), which becomes Quarry Rd. in Upper Leacock Twp. The Bushong Mill was a working mill until a few years ago. The bridge has been gone since 1952. It was the longest single spanned covered bridge in the county according to Tom Kipp-horn's notes. Unfortunately, card #16129 by Mel Horst calls this **Zook's Mill**, causing problems for many including you-know-who!



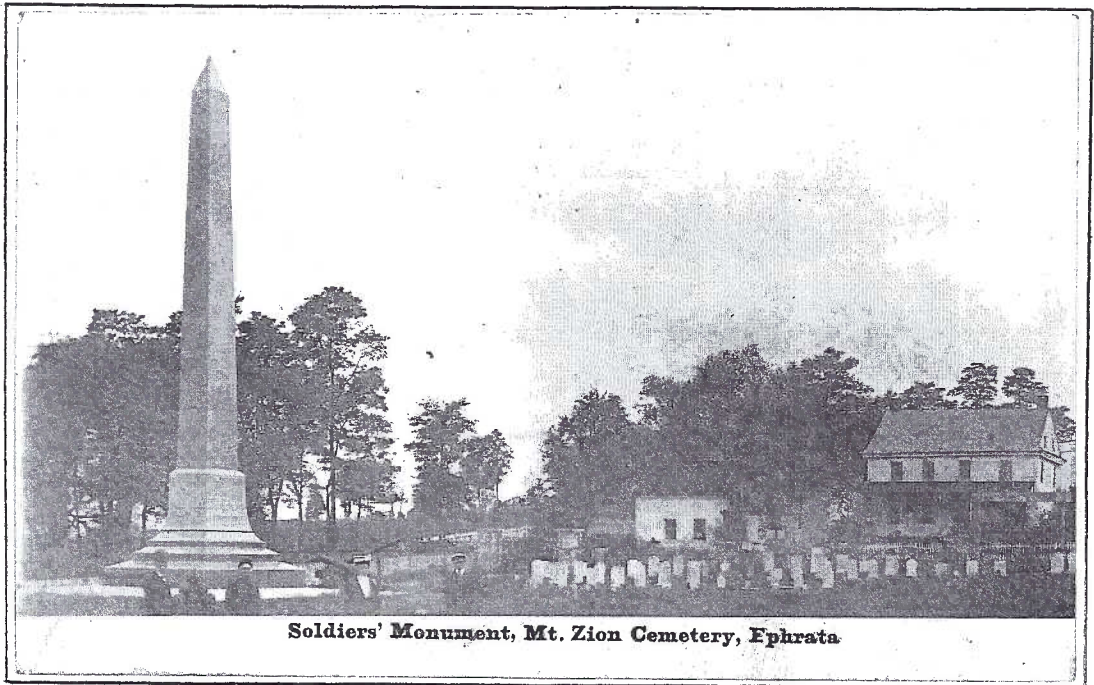
**John Wenger's or Henry Zook's Woolen Mill Bridge** is also known as **Rose Hill Bridge** (for its location at the intersection of Rose Hill Rd. and Log Cabin Rd.). The bridge *still spans* the Cocalico Creek leading you to the Log Cabin Restaurant up the hill in the Lahoy Woods. It is the one the Mervin Wenger family sees from its living room window.

Now, to add to the misery of us non-bridgers, Jim Hess postcard #21047-B has no name for the bridge in its caption and there are two exiting cards with the same number! One describes the bridge as "located between Lancaster, Pa. and Manheim" (and we know that is totally incorrect). The second card, no doubt a corrected version, places it "between Lancaster and Ephrata". Even this description could be applied to several bridges. Dexter of W. Nyack, NY, printed the Hess cards.

So ends the Tale of Two Bridges. If you're still confused, talk to Merv or Tom. JW.





Rededication in May 2002**Ephrata Monument****What?** 52-ton Obelisk**Where?** Mt. Zion Cemetery**When?** May 1, 1902**How?** By train, horse and wagon and steam engines**Why?** To memorialize wounded and dead in Revolutionary War.**Soldiers' Monument, Mt. Zion Cemetery, Ephrata**

As Ephrata view cards go, the monument in Zion Cemetery is note scarce scene, except perhaps for two real photos of which one is shown above. Most of the Revolutionary War Monument cards are in the \$1-\$5 range, in excellent condition.

Some dealers house the views with their Cloister cards. They know their history. It was this group of pacifists who, opposing the war, were still willing to open their doors to treating the ill and wounded that were transported from General Washington's army in the east. One card says, "200 Revolutionary soldiers buried here in 1776." The marker itself says "several hundred" died, but the actual number is closer to 60.

Cloister members buried the dead in nearby

Mount Zion, located at Old Mill Road and Route #272. Only a wooded board inscribed with the words, "Hier ruhen die gebeine von viel soldaten" (Here rest the remains of many soldiers) marks the graves.

In today's world, it's difficult to imagine a 52-ton monument being much of a feat to erect. One hundred years ago, however, it was no small matter to transport the Quincy, Massachusetts mined marble. The five huge pieces came by train to Ephrata and were then transported by horse and wagon and steam engines to the cemetery. The smaller pieces were 4 and 6 tons each. The base weighed 18 tons.

Rededication took place at the cemetery last month. It was the 100<sup>th</sup> anniversary of the erection of the obelisk.

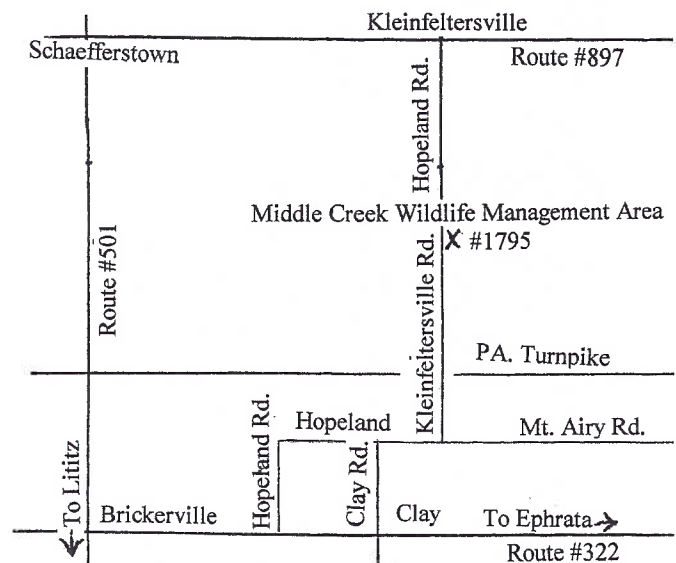
**June Meeting**

The Annual LCPC Picnic will be on Saturday, June 15, at the home of Jim Ward, 1795 Kleinfeltersville Rd., the last house on the east side before the dam at Middle Creek Wildlife Management Area. (See accompanying map.)

You are welcome any time after 10 AM. There will be room under roof or under the trees to set up a card table if you wish to bring one along to sell postcards or just show albums of cards. If you arrive before noon, bring your own lunch. Beverages will be provided.

Most members begin to show up after 1 PM to look at cards, socialize or watch the woodland birds (bring your binoculars). We will commence a brief meeting at 3 PM, with limited business, followed by monthly single card competition (a postcard bird), door prizes and the 50/50. At the picnic it's been the custom to have a table of donated door prizes - no limit as to the categories - some are dillies!

Picnic dinner will begin at 4 PM. This year there is no main entrée, so bring whatever food you choose, hot or cold and a serving utensil. The club will provide place settings and beverages. Don't forget to bring your lawn chairs. Of course, we're in the woods so *there'll be no smoking*.

**Future Shows**

**June 8 Towson, MD** Dee Delcher's Show, Days Inn, Loch Raven Blvd. and I-695. Free admission,.

**June 16 Chambersburg, PA** Phone Bob Bigler, 717-749-7090 for details. (dumb way to advertise a show)

**June 22 Fort Washington, PA** Antique Book & Paper Expo Center.

**July 6 York, PA** York Post Card Club's 12<sup>th</sup> Annual Show at Aldersgate Church, Tyler Run Rd., off S. George St. near Route 83.

**JUNE 15 = DEADLINE** for making loans to the Book Fund. By that date we will have all the money necessary to cover publication expenses. Make your check, in increments of \$500, to LCPC Book Fund and bring it to the picnic or mail it to Ray Dennis, 136 River Bend Park, Lancaster, PA 17602. Each \$500 loan will entitle you to one free *Windows Two* book.