

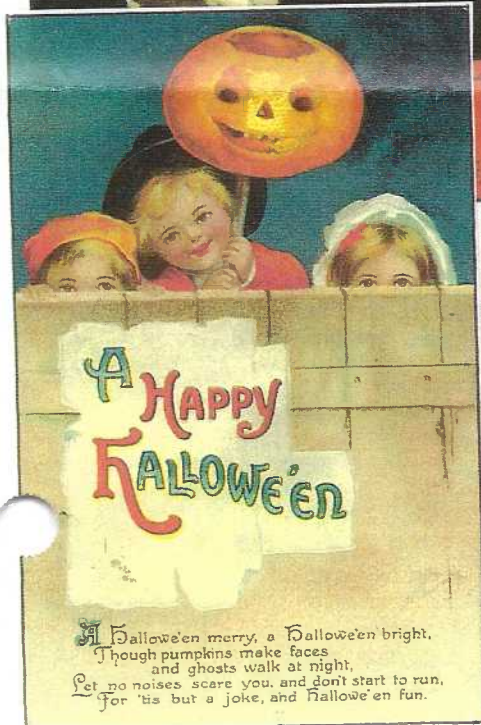
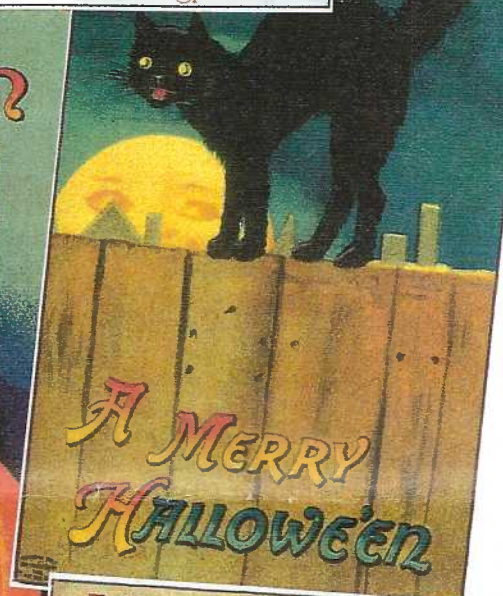
THE CARD Vol. 13, No. 10. Issue 154. October 2002.

Monthly publication of The Lancaster County Postcard Club, Lancaster, PA.

Enjoying postcards through education and entertainment.

Next Meeting: Mon., Oct. 21, 2002. Farm & Home Center. Buy, sell, trade from 5:30, Meeting at 7 p.m.

Club and Editor's address: LCPC c/o Jim Ward, 1795 Kleinfeltersville Rd., Stevens, PA 17578-9669 or mid-creek@ptd.net.



LOCAL P. O. HISTORY

Dot Aument Gathers Data and Authors The Post Offices of Southern Lancaster County

Like many retirees, Dorothy Aument, wonders how she ever got anything done when she was postmaster as well as part-time clerk in the store she and her husband owned in Fairfield. One of Dot's projects after her husband passed on was to research the PMs who preceded her. By the way, the post office couldn't be called Fairfield when it was established in 1838. There already was a Fairfield PO near Gettysburg. How it got its name Greene PO is still a mystery.

Her curious nature and an interest in history led Dot to neighboring post office histories and she soon found herself in Washington DC. She searched through microfilm, reading copies of faded pages, compiling data about postmasters and their appointments in nine southern Lancaster County townships.

Dozens of local residents were also interviewed to locate where each post office originated and the numerous moves each had made within its community.

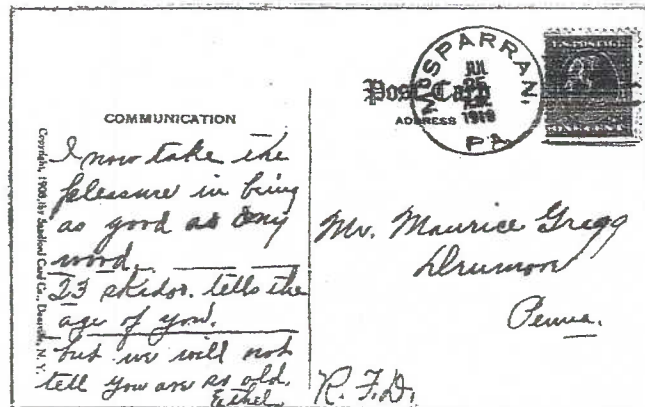
Townships covered in *The Post Offices of Southern Lancaster County* include Drumore, Eden, Bart, East Drumore, Fulton, Little Britain, Providence, Colerain and Martic.

So many POs came and went, it was necessary to use both 1875 and 1899 atlas maps of the townships and sometimes they didn't suffice. A large map of southern Lancaster County gives those of us unfamiliar with the area the gestalt – a much clearer picture of the geography of dozens of POs in relation to each other.

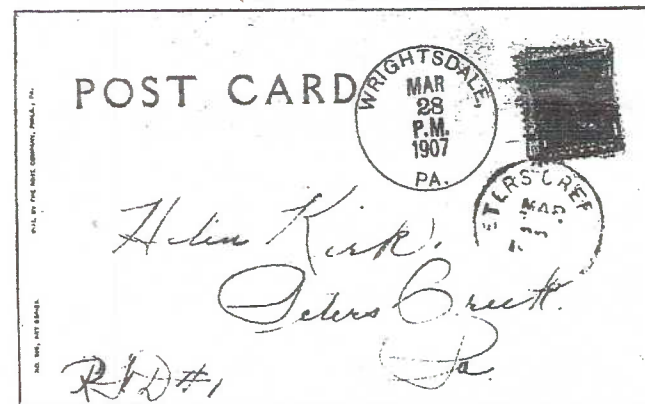
The icing on the cake in her book is Dot's inclusion of more than 50 old envelopes (properly called "covers") and postcards with cancellations of most of the POs. A search for these cancellations is what actually brought Dorothy Aument to our club. By the way, she's still looking for a postmark of Smithville. It shouldn't be so elusive since the post office was in operation from 1840 to 1934. If you have one, she doesn't want to rob your collection, she'd simply like a nice clear copy of it.

It was Dot's intention to have her handwritten history of more than 100 pages photocopied and given to the Robert Fulton Historical Society and a few relatives. When several members of LCPC heard this, they offered to type work onto just 30 pages but still include the postmarks and maps. The job is not finished. It's bound in a neat little 3-ring folder and, depending on response in the next 30 days, will be printed in a limited quantity.

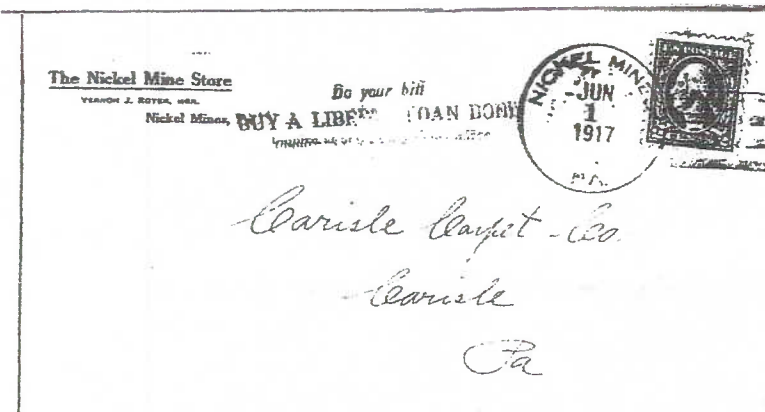
Call Dorothy Aument at 464-1843 (Willow Street) or Jim Ward at 721-9273 (Ephrata) to reserve your copy. The cost is \$5 picked up at the November or December meetings or \$6 (w/o folder) by USPS.



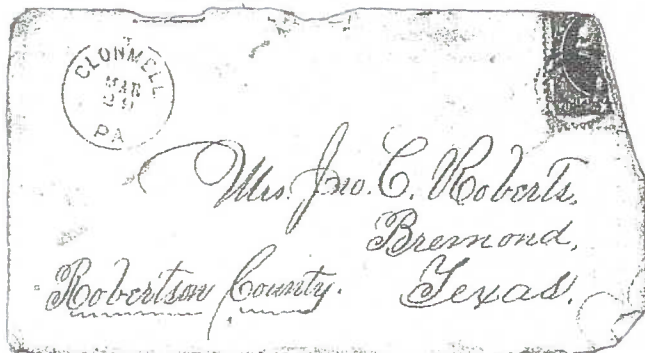
McSparren P.O. was in Cherry Hill (there was an earlier Cherry Hill P.O. elsewhere in the state). The community surrounded the intersection of Peach Bottom and Cherry Hill Roads in Fulton Twp. It operated for 50 years, from 1887 to 1937.



Wrights Dale P.O. was in a store at the corner of Black Barran and Ballance Meeting Roads. Today the building is a residence. Mail was often cancelled at the point of receivership as well as the point of origin.



Nickel Mine P.O. was in Bart Twp. Everybody knows where Nickel Mines is. It has the biggest little auction twice monthly with an Amish auctioneer. If you don't know *how* the area got its name, you should. Look it up! This 1917 cover sports a patriotic WWI slogan cancellation, "Buy a Liberty Loan Bond."



Clonmell P.O. was near Kirkwood at the corner of Pumping Station Rd. and Bridal Path Lane. It operated from 1834 to 1883 when business was transferred to Kirkwood. Some early postmarks did not include the year. Notice the long journey this letter took.

October Cover Cards

International Art's Popular and Prolific Artist – Ellen Clapsaddle

Clapsaddle capers by colorful kids are captured on the cover of our Halloween Card.

Ellen Clapsaddle may just be the most prolific American artist of postcard children. Born the year the Civil War ended, Ellen grew up in South Columbia, New York and attended country school graduating from the Richfield Springs Seminary in 1882.

She gave private art lessons even before attending the Cooper Institute in NYC. Shortly thereafter she found contract work with the International Art Company (later Wolf Bros.) and designed all sorts of paper items – calendars, die-cut folders, greeting cards (including postcards) and even porcelain.

Many of the verses on her designed cards were hers.

Work In Europe is Devastating

International Art invested most of her earnings for her. While working for the firm in Germany her earnings were virtually lost at the outbreak of World War I. She suddenly found herself in need of special arrangements to return to the USA. She did continue to design for International Art Co.

She died penniless in 1934, a day before her sixty-ninth birthday.

Source of Clapsaddle Info

The above information comes from Dotty Ryan's book, *Picture Postcards in the United States, 1893-1918*, two copies of which are available from our library. The book, in this writer's opinion, is better than any other five books ever written on U. S. postcards. You owe it to yourself to read at least some of it.

In case you're unaware, the gifted author was born and raised in Lancaster. Her maternal grandfather, S. Clay Miller, was a downtown merchant. Dottie's name was Ryan. She married George Miller (U. of DE, Eng. Dept.). Husband and wife collaborated on the book at the beginning, George being responsible for most of the introductory chapter and the chapter on expositions and minor events. Marital problems ensued and Dotty largely finished the monumental work on her own. So you will find the first printing is attributed to Geo. and Dorothy Miller; the second printing to Dorothy B. Ryan.

Dottie makes an important side note about Ellen Clapsaddle. Her renderings of children were all executed with the intention of appearing in a postcard format, unlike many other PC artists whose works were borrowed from magazine illustrations, etc.

The Cover Cards

Most, but not all, Clapsaddle cards have the artist's signature spelled out – Ellen H. Clapsaddle. Experienced collectors recognize her art and correctly attribute a card to the artist, so it's quite common to see cards listed as an "unsigned Clapsaddle." Ellen's Halloween children appear in many series. Those chosen for our cover (with series number) include:

Left column:

Boy and terrier (1237)

Candle (1393)

Children behind fence and verse (1667)

Middle column:

Girl and boy and Jack-o-lantern (1393)

Little girl witch (978)

Right column:

Cat on fence (1393)

Boy and Jack-o-lantern with pipe (1238)

Boy frightened by cat (1393)

Halloween Postcard Values

The question is often asked, "Why are Halloween postcards worth so much compared to other holidays?" A logical answer is that most golden age postcards were made in Europe (largely Germany) and New Year, Valentine, Easter and Christmas cards were made for sales in many countries. Halloween cards, on the other hand, were printed primarily for only the American market, and therefore made in smaller quantities.

A logical question follows, "Why, then aren't Thanksgiving postcards just as valuable (expensive) as Halloween cards?" Good question!

Proof Postcards Available

Postcards that were submitted for *Windows Two* and that were ultimately used were first made into proof copies on photographic quality paper. The club's directors and officers voted to give those members the privilege of purchasing the proofs at 50¢ for black and whites and \$1 for color proofs. These members who loaned cards have the option to accept any or all of their proofs. Those not accepted will be offered to the membership at large at a date in the near future. There is only one proof for each card used in the book.

Some members were contacted at the Sept. meeting. These members should contact Jim Ward on or before the Nov. meeting if they wish to examine and possibly purchase the proofs of the postcards they submitted and which were used in *Windows Two*:
Blanck, J., Brackin, C., Brown, Dn., Brubaker, J., Bubb, R., Buckwalter, B., Davis, A., Dennis, C., Fry, Dwn., Fulmer, G., Gambler, N., Gates, D., Glass, S., Gregg, B., Groff, C., Harris, E., Heisey, B., Homsher, R., Kirk, M., Long, J., MacDonald, B., Rodkey, J., Rodriguez, J., Rowe, D., Sowers, B., Stover, L. and Weaver, B.

After Nov. 18 the unclaimed photos will be offered to members at large for \$1 ea. b/w and the colored for \$2 ea.

At the Sept. meeting \$258.50 was collected. Proceeds will go into the club's treasury to offset book expenses.



September Meeting

With the suppressive summer weather and many vacation trips behind us, it was a pleasure to see 73 members and guests at September.

Set up and selling by 5:30 were the Bishops, the Moyers, the Steinbergs, Bob Kramer, Jere Greider, Dede Schaeffer, Norman Zimmerman, and Jim Ward. Betty Weaver won 100 PC sleeves as a door prize. Paul Smoker won a PC eraser/pencil as the second door prize. Clarence Swinehart won \$27.50 in the 50/50.

A guest becomes a new member.

#680 **Ronald L. Levering**, 17 S. 6th St., Akron, PA 17501. Ph. 717-859-3094. Ronald collects Lancaster County, but especially Akron, of course.

Change of address and phone effective immediately:

Dale Shaub, 37A Tenby Way, Lancaster, PA 17601, Ph. 717-295-4542.

Re-stated: John and Sara Fisher, #565 and 566. 508 Gibbons Rd., Bird in Hand, PA 17505. Ph. 656-6275.

REMINDER: Clip the form in this issue of *The Card* and mail it or send info by e-mail to Betty Beck if you have any changes or additions (such as e-mail) since the last roster.

Monthly Exhibit Competition

Potpourri is always a popular theme. As you might expect, there was a huge variety of board subjects. Ruth Moyer, our lady-in-charge, was pleased to see a good response for the monthly competition.

Harold Moyer FIRST Mount Gretna, PA
Norman Zimmerman SECOND Prayer
Susan Glass THIRD Cats at Play

Honorable Mentions

Jim Ward Legends and Lore in Nature
Doug Milliken Sailing by Moonlight
Dede Schaeffer Summer Fun
Ruth Moyer Before 9-11-01
Tom Beck A Comedic Hodgepodge
Bill Guntow My Favorites in the Nation's Capital
Mary Ann Guntow A Journey thru the Holidays
Don Davis On the Right Track
Mary Darrenkamp My Vacations - Coast to Coast
October subject(board) either the letter Q or R or both.
November subject (single card) Harvest
December subject (board) Fireplaces

Random Halloween postcard images in this issue were published by the Stecher Lithograph Co. of Rochester, NY. They generally are found six cards to a series – easily identified groups to collect.

Tentative Schedule for 2003

Exhibit Board Themes	Month
Emergencies (SC)*	January
Valentines (B)	February
Weather (B)	March
Family (SC)	April
The Color Purple (B)	May
Food (SC)	June
Vacations (B)	July
Hot (S)	August
School (B)	September
Farming (S)	October
Politics (B)	November
The Letter X (SC)	December

*SC=single card, B = board of postcards

You Can Participate in Monthly Fun

The directors and officers thought it appropriate, with so many new members, that we recap the procedure used for LCPC's Monthly Exhibit Competition.

Any member may participate each month. Choose PCs from your collection and mount them with clear corners (available at crafts shops) on a 22" x 28" art board. Although not required, white is suggested. The boards are available at stationery and craft stores in the 35¢ to 50¢ range. Don't use foam or expensive/heavy boards - the clamps on our giant easels won't hold them.

If it's single card night, place your card (continental size is OK) in any numbered sleeve, horizontal or vertical, on the board on the table easel.

That's all there is to it. Ruth Moyer may ask you (when the voting is over) why you picked certain cards or what significance they have to you, if any.

Everyone may vote once, including guests.

Special colored postcards, printed for the monthly competition, are given to all participants the following month. First, Second and Third place winners are also given cash awards of \$5, \$4 and \$3.

Sales of Windows Two

Ray Dennis reported the sales for *Windows Two* have been brisk. At the September meeting 115 books were sold bringing at total at this writing to nearly 700 of the 2,000 printed.

Members are reminded that the October meeting was chosen as a deadline for the member discount. **Each book you buy on or before October 21, 2002 is \$25, saving you \$5 per book. After that date members are to pay full price of \$30.** If you intend to use *Windows Two* as Christmas presents, October is the time to save money. Should you wish to purchase a number of books, please contact Ray Dennis at 290-7948, so he has a better idea of how many to bring to the meeting. You may also pick them up at his home in Lancaster. Call for directions.

The printer was paid in full a week after we picked up the order. Sales since then will replenish our Book Fund so those members who made loans will receive their money as soon as possible.

FUTURE FAIRS

- Oct. 5-6 Allentown, PA Great Eastern Book & Paper, Fairgrounds.
- Oct. 11-2 Timonium, MD Monumental Postcard Club, 20th Annual Show, Days Inn.
- Oct. 26 York, PA Book & Paper Show, Fairgrounds.
- Nov. 2 Belmar, NJ Jersey Shore PC Show, John Taylor Pavilion
- Nov. 9 NYC, NY Metropolitan PC Club Show, New Yorker Hotel
- Nov. 9 Odessa, DE 1st Americana Paper Show, Fire Hall, Main St. (Rte. 299)
- Nov. 22-23 York PA Martin Postcard Show, Fairgrounds
- Nov. 29-30 Lancaster, PA Morlaton Postcard Club's Fall Show, Farm & Home Center (see enclosure)

Programs for the LCPC

- Individual member cards: "Number 3"
- Earl Carver
- Free-for-all (Members Buy, Sell, Trade)
- Betty Davis *Columbian Exposition Postcards*
- Jim Ward, *Local Postcards by D. B. Landis*
- Annual Picnic, Hosted by The Heims
- Doug Milliken, *Detroit Publishing Co. Postcards*
- Tom Beck, *Stevens Trade and Its Environs*
- Jim Ristine (Guest), *The Wildwoods*
- Annual Auction, Norm Zimmerman in charge
- Bea Kreiner, *Manheim, Pa.*
- Christmas Dinner Party and Dede Schaeffer, *The Night Before Christmas*

LCPC MEMBERSHIP INFO for 2003 ROSTER

Please type or print legibly and return promptly to Betty Beck, 11 Cinder Hill Rd., Lititz, PA 17543. Deadline for changes and additions is November 18. This is a time consuming job. Please make the work as easy as possible for the committee. The LCPC Roster will be distributed to members at our December Christmas meeting. This year they will not be mailed except upon request. We do not distribute the Membership Roster beyond the club's membership. You may mail this form or an exact copy or you may e-mail your information to bbeck@ptd.net.

Name/s _____

Street or P.O.Box _____

City _____ State _____ Zip _____

Phone (____) _____ e-mail _____

Print your e-mail address clearly.

Collecting interests (max. 20 words) _____

This 'n That

2003 edition of LCPC Recipe Book

Betty Beck reminds us that there will be a new LCPC Recipe Book this year. It will be ready for the Christmas Party so if you have a recipe to contribute, get it to her petey pronto! Send it to 11 Cinder Hill Rd., Lititz, PA 17543 or e-mail it to bbeck@ptd.net. Please, no recipes over the phone. Mis-interpretations could end with a group poisoning!

Christmas Dinner Tickets

Bryan Benner started a sign-up sheet for those attending the Christmas Meeting Dinner. Be sure you sign it in November or send your check to him at 127 E. Clay St., Lancaster, PA 17602.

Here's the deal -

Every LCPC member may buy a dinner ticket for only \$5. Each member may bring a first guest for \$10. More guests would each pay \$15. The difference in the discounted tickets is subsidized by the sale of *Windows Two* - just another way we get to enjoy the time and effort we applied to the publication.

Food will be catered at the Farm & Home Center (meeting room expanded) by Enck's of Manheim - turkey or ham and all the trimmings.

Manheim Postcard Book

Harold Galebach and John Blanck are two LCPC members who are actively working on a postcard picture book to be published by the Manheim Historical Society. The MHS has chosen to use our work sheet method for compiling its information.

Selling *Windows Two*

Members are needed to man the booth at the YWCA on October 15 and 16 at the Town Fair. Four years ago we sold 111 volumes. If you can allow just a few hours, please call Betty Beck (627-7732) and fit yourself into the schedule. It is an indoor event.

Some books were sold at the Denver Fair, Strasburg Heritage Day and at Amos Herr Park on Labor Day and on Sept. 22 and the Falmouth Goat Parade and Races on Sept. 28. We expect to be at the Hans Herr House Schnitz Day on Oct. 5. If you know of other local events where we might advertise/sell the book, please contact Tom Beck (627-7732), Ray Dennis (290-7948) or Jim Ward (721-9273).

Entertainment Books

Dick Bishop has a new supply of 2003 Entertainment Books. You won't find the \$25-\$30 books any cheaper than his price of \$21. Contact Dick at the York and Lancaster meetings or at 717-854-4605 (York).

Nomination Committee

Should someone approach you from behind - but without a Halloween mask - don't be afraid, even if they tell you they're on the Nominating Committee. The tough spot has been filled - Vice President (it's a secret). The committee is looking for a new secretary and several directors. Volunteer. Have you done your share for LCPC in the last year or two?

From the Mail Bag

"Thanks for your tremendous labor of love in compiling our club's Volume Two.

It is a joy to leaf through the book and see and read about all the wonderful views throughout Lancaster County. Some are familiar, other are absolutely new. It's easy reading in a marvelous format.

With deep appreciation, Earl Carver*

"Congratulations! The second book is even better than the first. You should be proud!"

Jack Brubaker

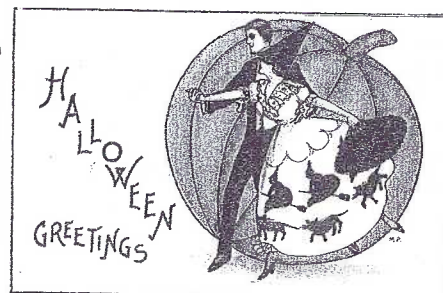
"I'm reading Volume Two cover to cover. You render a real service. This broadens recorded history; it's the kind the big boys ignore.

Keep up the good work.

Cordially, Gerry Lestz."

* We see LCPC's second President, Earl Carver, graced the cover of Senior News, August 2002. He continues to promote postcards in his daily travels. Thanks, Earl.

Stecher Series 419 C



LCPC AUCTION #32 Monday, Oct. 21, 2002

All lots are postcards unless noted. Descriptions are the sellers'. Potential buyers should arrive early and examine lots carefully. Non-members may buy but must register with the clerk before the auction begins. Sellers must wait until the auction is over to collect their receipts less 10% for the club. No checks will be mailed. We have volunteers, so please make their jobs as easy as possible. un=unused Spaces separate sellers' lot groups.

1 10 advertising

2 15 churches

3 10 clocks

4 10 colleges

5 10 flowers

6 10 horse-drawn vehicles

7 10 pheasants

8 10 restaurants

9 15 rocks and mountains

10 10 sheep

11 10 foreign: mostly Canada

12 29 views: DC, MD, NJ, mostly VA

13 51 PA views

14 70 New York + 1 non-PC

15 35 views: TN, OH, KY, MI

16 56 views: SC, GA, mostly NC

17 65 views: RI, CN, ME, VT, NH, mostly MA

18 30 views: West and mid-west

19 187 FL views and 1 FL decal

20 Set of 8 antique autos + over-sized and mixed misc.

21 Mountville, PA, new, oversized

22 Hires Root Beer puzzle PC, un

23 Greetings from Lancaster County, exaggeration, un

24 Jacob Shirk, Lancaster advertisement

25 2 diff. oldest house in Lanc. County, un

26 Maple Grove and Brookside swimming pools

27 4 diff. Ephrata

28 2 diff. 1960s experimental Oldsmobiles

29 D. M. DeHaven, Lancaster, blotter, un

30 1951 Coca Cola blotter, un

31 Set of 7 Sunbonnet girls -Days of the Week

32 Set of 8 Lord's Prayer

33 Set of 8 embroidered Spanish dancers

34 Set of 6 Tuck farm animals

35 24 linen PA Turnpike

36 35 chrome Trains

37 4 Tuck Halloween

38 4 dogs

39 4 squirrels

40 25 art, sculptures

41 42 NJ views

42 15 Lincoln and related

43 25 military + 1 folder

44 50 trains, trolleys and depots

45 21 George Washington

46 35 diff types boats, ships, ferries, sailboats

47 35 real photos: views, buildings, people

48 35 animals

49 26 advertisements + folder



Stecher Series 408 B

50 I'm Going to be a Boy by JD Cardinell, un
51 2 diff. lovely ladies/reverse message in mirror, un
52 20 diff. animals
53 an old Valentine, metal frame, non-PC back
54 Valentine scrapbook
55 sm. scrapbook w/some postcards
56 50+ old PCs and Valentines in Valentine scrapbook
57 1914 Farm Journal map of Lancaster County, 22x28, in a frame
58 lg. stock book of used US stamps (32¢ and up)
59 500 counter pages for stamps

60 28 Tuck Oilettes: The Queen's dolls' house
61 10 wildflower series by Margaret Tarrant
62 set of 6 Royal Mail showing diff. transportation
63 10 Dutch children
64 25 old Lancaster views
65 25 more old Lancaster views
66 20 white border and linen Lancaster views
67 50+ local views (chromes, some dups.)
68 75 mixed views and greetings
69 25 folders: mixed USA views

70 5 downtown Lancaster

71 23 Skiddoo

72 3 Lancaster hotels

73 6 Penn Square, Lancaster

74 6 downtown Lancaster

75 5 Penn Square, Lancaster

76 2 St. Mary's church, Lancaster

77 9 Stevens Trade and environs, Lancaster

78 8 world musicians by Stehli, Switzerland, un

79 8 costumes, published in France, 1927, un

80 Set of 12 Life of Christ in mosaics w/booklet, un

81 Set of 4 Mount Vernon by Ladies' Assoc., un

82 22 Useful Birds of America by A&H, non-pc, un

83 11 Lucky Birthstones set (needs January)

84 Eastern Star Temple, scarce 1937 set, 12 linen, un

85 3 Bamforth hymn sets: Rock of Ages + two more

86 Set of 14 Station of the Cross, Canadian publisher

87 Set of 48 Randolph Caldecott nursery rhymes, un

Thank you for participating. Don't forget to pay your bill. Enjoy your purchases.

Our auction is generally once each year - in October. Any member may submit lots on the club's form in September for listing in the October Card. Members and non-members may make purchases.

Postcard Supplies

A word to the wise - Keep your postcards alive and well. Always keep your cards standing upright, whether in boxes or in albums. Piles of flattened cards attract and retain moisture - a major killer of old paper items including postcards.

Ultra Pro postcard pages fit any standard 3-ring notebook binder and are just \$15 for a box of 100 or 20 for \$4.50. Available in 1-pocket (8 1/2 x 11" sheets), 2-pocket (5x7" photos), 3-pocket (approx. 4 x 6" PCs), 4-pocket (regular size postcards). You may mix sizes for these prices.

Ultra Pro postcard sleeves are \$1.50 per 100, 300 for \$4 and 1,000 for \$12, regular size. Continental size is 100 for \$2.50.

See me at the York and Lancaster meetings. Ask to see samples of the quarterly *Journal* and the annual *Postcard Album*

E-mail to midcreek@ptd.net or phone at 1-717-721-9273. Jim Ward