

THE CARD. Vol. 14, No. 2. Issue 158. February 2003.
Monthly publication of The Lancaster County Postcard Club, Lancaster, PA.
Enjoying postcards through education and entertainment.

Next Meeting: Mon., Feb. 17, 2003. Farm & Home Center. Buy, sell, trade from 5:30, Meeting at 7 p.m.
 Club and Editor's address: LCPC c/o Jim Ward, 1795 Kleinfeltersville Rd., Stevens, PA 17578-9669 or midcreek@ptd.net.
 Club website: www.playle.com/clubs/lancaster or Google search: lancaster county postcard club

180



LINCOLN DURING HIS PRESIDENCY.
 From a photograph by Brady.



READING LAW.

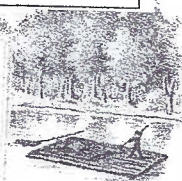
"If I ever get a chance to hit that thing [slavery], I'll hit it hard."—Lincoln's remark on coming out of a slave market, at New Orleans.



LINCOLN IN THE SLAVE MARKET.



LINCOLN AND HIS SON, TAD.
 From a photograph by Brady.



FLAT-BOATING.

You may fool all of the people some of the time, and some of the people all of the time; but you cannot fool all of the people all of the time.

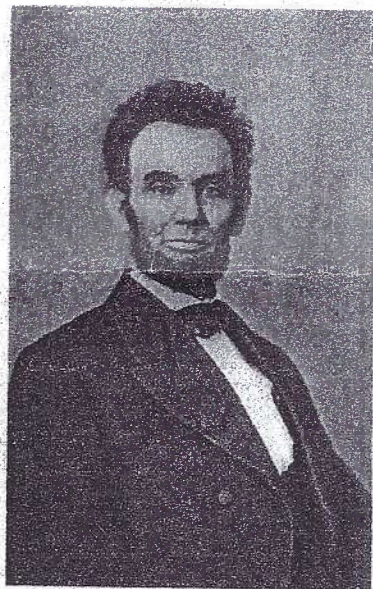
—Attributed to Lincoln.



SPLITTING RAILS.

Copyright, 1908, BY THE CENTURY CO.

1809—LINCOLN CENTENARY—1909

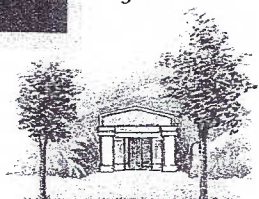


LINCOLN DURING HIS PRESIDENCY.
 From a photograph by Brady.



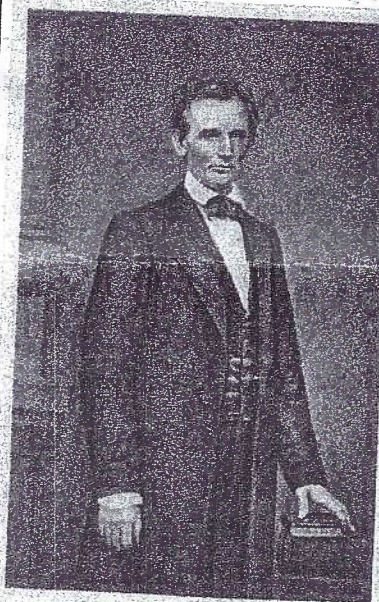
SPRINGFIELD HOME.

Every man is said to have his peculiar ambition. Whether that be true or not, I can say, for one, that I have no other so great as that of being truly esteemed of my fellow-men, by rendering myself worthy of their esteem.
 —From a speech, 1832.



TOMB.

Copyright, 1908, BY THE CENTURY CO.

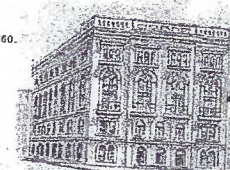


LINCOLN AT THE TIME HE MADE THE COOPER UNION SPEECH.
 From a photograph by Brady, February, 1860.



INDIANA HOME.

If any personal description of me is thought desirable, it may be said I am, in height, six feet four inches, nearly; lean in flesh, weighing on an average one hundred and eighty pounds; dark complexion, with coarse black hair and gray eyes. No other marks or brands recollected.
 —From a brief autobiography.



COOPER UNION.

Copyright, 1908, BY THE CENTURY CO.

BENNER'S BRIGADE BEGINS WITH A BANG

It was a cold winter night but that didn't deter 76 members and guests (most of whom became new members), from braving the chilling winds. As a noted microbiologist was overheard to say, "This prolonged cold weather will surely have an effect on next summer's pests, notably the West Nile virus and perhaps even the Lyme tick". Now, that's what this writer calls seeing the glass half full!

Ruth and Harold Moyer, our faithful food committee, were preparing for our Anniversary Cake Feast at 5 PM. (Our first meeting was January 1990, so this was our 13th birthday party. Charter members find it hard to believe. The cake, as in recent years, had a beautiful postcard laser-printed into the icing. It was a little Victorian girl and her velocipede. R&H had the original postcard there to show the remarkable resemblance. Coffee, tea and cocoa were available. Thanks, Ruth and Harold, for your never-ending contributions to LCPC. An important aside - Archivist Earl Carver has photos of all of our anniversary cakes except the seventh. Will you check through your club photos and see if you can complete the collection, please?

Set up and selling by 5:30 were the Bishops, the Steinbergs and the Moyers, Dede Schaeffer, Jim Ward, Paul Weidman and Mike Middleton.

By 6 PM the club table was manned by Betty Kreider who asked for names on the evening's roster and gave out nametags. Her daughter ('case you didn't know) was next to her. Betty Beck was handing out the new membership rosters. It was a tremendous job that she took over from Gwyn Fulmer who revised the annual list for many years. The roster will be available at meetings through March and thereafter to new members. If you're an "old-timer" and would like one, we'll mail it with your next *Card*. Let Betty know at bbeck@ptd.net or write to 11 Cinder Hill Rd., Lititz, PA, 17543. This year's roster is available on request.

Speaking of B. Beck, she chairs the membership committee this year and is currently accepting dues for 2003. Please note: the membership voted at the January meeting to increase the dues (the first increase in 11 years) to \$10 per person and \$5 for each additional member at the same address. Note: if you joined LCPC at the August Expo, your dues are paid for the new fiscal year that runs from April 2003 through March 2004. Do NOT send additional dues. Other members may send their check together with a request for the roster to Betty (see address above). Make checks payable to LCPC.

Gisela Withers, our new secretary, did a commendable job with her first reading of the minutes. She was also so helpful in taking notes (in the dark) for a program report.

President Bryan Benner announced that each of the five members of the library team would continue to bring five books each to each meeting. This should give attendees a fair shake at choosing good reading material for a month. Bryan is looking for a member of the team to act as chairperson. The job will entail preparing new additions with envelope and card, checking on books out on loan and keeping track of current inventory.

We will be hearing more about the library in the next two months. Presently, Dede Schaeffer and Jim Ward are culling books that are seldom or never

used. A final decision on which ones to keep will be made by the directors and disposition will be in agreement with the donors, if any. A possible sale of culled books will be at the March meeting with a list published beforehand in *The Card*. Following the sale, a new library list will be published and mailed with a future issue of *The Card*.

Jim Ward showed the latest addition to our library from John Alleger, who wrote a grand story about *Roadside America* and the postcards it issued (see the December *Card*). John had promised a checklist of those cards. We expected several sheets of data. Instead, we received, by priority mail - in time for the January meeting (as promised), a loose-leaf notebook of more the 40 pages of postcards lists, photos, brochures and articles re. the famous roadside attraction. We thank John for a tremendously elegant job. The book will be invaluable in future years as the real photo and linen cards of *Roadside America* become even more collectible.

Brian Frankhouser once again chairs the committee for a National Postcard Week theme. If you know of an event or person, preferably, but not necessarily local that we can honor on this year's May NPW card contact Brian at 354-7611 or 114 N. Roberts Ave., New Holland, PA 17557. He will report his findings in February. We'll vote in March on a theme and have artwork, etc. in the works to be ready for delivery in late April.

NPW is the first full week of May. Members are encouraged to make their own PC for exchange among other members or clubs. We'll have some of the club's albums of past years' cards at the Feb. and March meetings to give you ideas. Many of the more desirable cards are homemade.

John Rodkey reminds us that Turkey Hill issued a calendar for 2003 that contains 12 postcards, miniatures of each month's illustration. Look 'em up!

Dede Schaeffer, in charge of reporting current events, reminded us of Leo Frantz' estate PC sale at Horst Auction House on Feb. 28 and March 1. She also reiterated the events included in the showing of the Samuel Schmucker exhibit at the Art Museum of the University of Delaware. It continues through March 28...a short drive for a unique display.

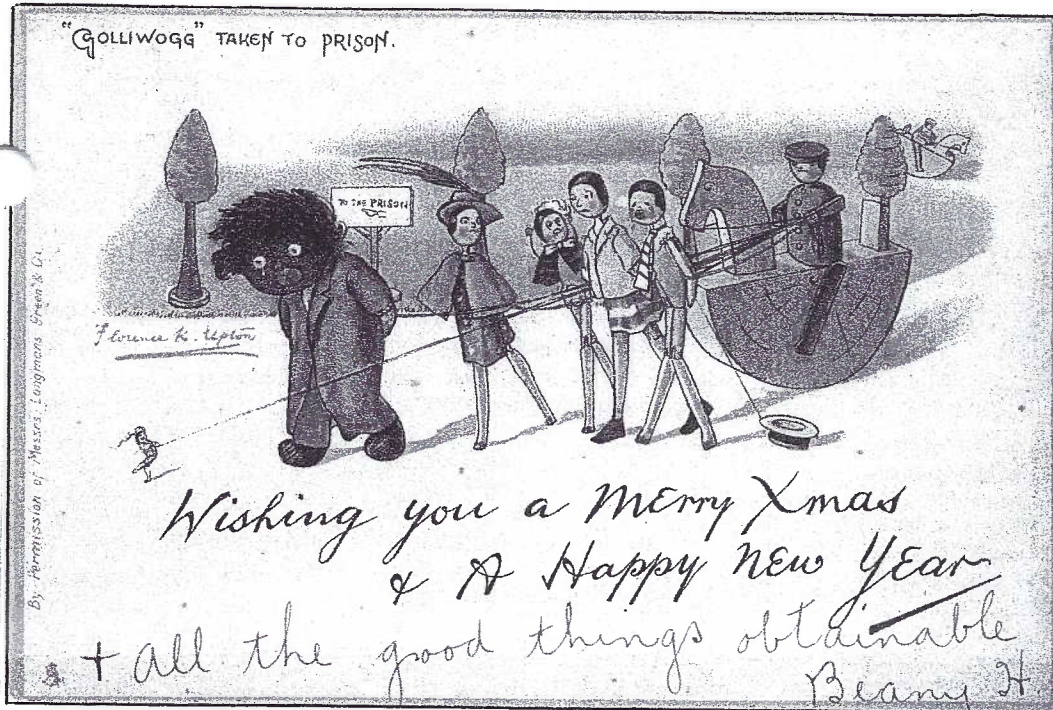
President Benner announced that the next meeting of his directors and officers would commence at 7 PM sharp, at his home on March 4.

All in all, a great performance by the Benner Brigade for 2003!

Back Issues of The Card

Your editor has assembled a few year sets of *The Card*. They're available on a first come, first served basis. The years 2002, 2001 and 2000 are each \$10. 2002 has 12 color pages, 2001 has 10 color pages, and 2000 has five color pages. They will be mailed flat. Add \$1 for postage for each year. You may call and reserve the sets for pickup at the Feb. meeting and save the postage.

There are also some staggered issues of earlier years. They will be listed at a later date for 35¢ each or 3/\$1. Make checks payable to LCPC. See masthead for contact.



An unusual subject for a Christmas card, the scene shows a distressed Golliwogg on one of six cards in Christmas Post Card Series #1792 by R. Tuck. P/u Dec. 23, 1904.

Error Numero Uno for 2003

Some people live a sheltered life. They've never encountered a polliwog or a golliwog.

If you lived in the country and had some leisure time as a child, you may have waded in a brook and found frog eggs. Taking them home in a bucket, they probably developed into polliwogs = tadpoles. They were most often black, regardless of their ultimate adult/frog stage color.

If you lived in Great Britain particularly, but anywhere in general and, as a youngster, were encouraged to read, it's quite possible you encountered a golliwog. Perhaps you were a postcard collector of children or toys or dolls or signed artists. In any of these instances, you might have met a golliwog or two – or maybe not. Golliwogs on postcards aren't common! They aren't rare, but they're sought after enough that supply never seems to meet demand.

Come to think of it, polliwogs don't show up often on postcards either. Is there a dealer out there who can show us six postcards featuring polliwogs – in the next 60 days? Betcha can't! On the other hand, I haven't heard of PC collectors breaking their necks looking for polliwogs (but then, I don't get around much any more).

To what end does this essay lead? Can it get any more boring than the *Dissertation on Roast Pig?* No. Never.

What it does disclose is the first (and not the last) faux pas by your editor and his proofreaders for the year 2003.

What it tells you, in case you didn't see the error, is that the little black doll hiding from the little boy on the 2-year old birthday card on the January cover of *The Card* is really and truly a **golliwog** – a brain storm of the late British writer of children's stories, Florence K. Upton. What that little black-faced doll is not, is a **polliwog** – a tadpole.

Your editor has met both golliwogs and polliwogs during his lifetime, not in great numbers, mind you, and evidently not often enough that his aging brain didn't discern the error in the explanation of the cover cards on page three of the Jan. *Card*.



Kit Forbes's golliwog* on January cover.

Congratulations to Russ Holmes, our eagle-eyed reader from Seven Valleys, PA. Russ made my New Years Eve with an e-mail telling me of my first mistake for 2003. Russ, and his wife Martha, are covered bridgers. They're both detailers. They don't miss an out-of-place splinter on their favorite subjects.

Since then, several other readers have found the error. My Thank You goes to them and my apology goes to all.

Several books on the market mention golliwogs in postcard sets by Raphael Tuck. You'll find listings from 10 to 16 sets of six cards each. Dawn Cope, in her recent reference book, *Postcards from the Nursery: The Illustrators of Children's Books and Postcards 1900-1950*, lists 16 Tuck sets of golliwogs. This ought to be the last word. Dede Schaeffer has the book and the brief bio on golliwog artist, Florence Upton, relates that she conceived the name for the doll from "the benign look on its face". Upton went on to use the black-faced doll in a number of illustrated children's books, commencing in 1895.

The golliwog* never had a copyright, so other artists used the golliwog concept and you'll find non-Upton images on postcards! According to Susan Nicholson's *Encyclopedia of Antique Postcards*, Attwell, Studdy, Kennedy and Lewin have drawn the golliwog on PCs. Still, in all, even with the imitators, there are more collectors than the supply can fill, and so prices range from \$10 to \$25 per card.

And that, dear readers, becomes our recognition of black history month – but more particularly, an apology.

JW

*Dictionaries spell the doll with one G. Tuck's captions of the Upton postcard images include 2 Gs.

Monthly Competition

Wearing two hats in January, (she ordered and served our anniversary cake) Ruth Moyer easily jumped into her role in conducting the monthly competitions. We had a half dozen guests and new members among the 76 in attendance. It may take a time or two, but you newbies will soon realize Ruth is a bit Dutchified and you'll catch on soon. She hails from Blainsport, a suburb of Reinholds, both of which are near the Berks County border where Deutsch is spoken and eaten and lived all the time. (Wait till you have a conversation with her husband, Harold!)

Participants and winners with single card entries on the theme of Emergencies were:

Earl Carver FIRST You gottah what? (Water skiing bathroom humor)

Bill Guntow SECOND A black man up a tree
escaping alligators

Jim Ward THIRD Man helping friend who
fell into a beer stein

HONORABLE MENTIONS

Tom Beck Boy's rush to the outhouse

Doug Milliken The Flag Studio burning in California

Ruth Moyer Fighting the Flames (Fire engines)

Mary Ann Guntow Rush Call (Trailer park
bathroom humor)

Harold Moyer Going to a Fire (Fire engines)

Betty Beck Emerge in Sea (Great pun on
a statue in a flood)

Thanks to all. Why don't YOU try in February? The topic is Valentines (a board of 6 to 20 cards). Use a cheap 22" x 28" board, held vertically (portrait). Use clear corners to hold cards. Future topics:

March – The weather (a board)

April – Family (a single card)

May – The color purple (a board)

June – Food (a single card at our picnic)

January Program

A member participation program is assigned for the month of January. In case of inclement weather no single member needs be disappointed if the meeting must be cancelled. It also alleviates a headache for the Program Chair (Vice Pres.) to tackle a rescheduling. This year's theme follows a sequence begun with the new century. For 2003, the theme was the number THREE. Thanks to Gisela Withers and VP Doug Milliken's flashlight for in-the-dark note taking.

Tom Beck's rear end view of three extra wide women commenced the viewing; **Paul Smoker** followed with three views of a Native American boy and his apple; **John Rodkey** showed a news article re. a 3-legged cat being fed squirts from a milked cow. He had transposed the article to a homemade PC.

Betty Beck's three children were sledding on a pretty 1913 New Years card; **Bryan Benner** showed a newly purchased PC of a 3-year old on his hobby horse; **Gwyn Fulmer** three sail boats may have been a generic card, but beautiful anyway; **Mary Ann Guntow** had a card of three kittens; **Bill Guntow's** PC was a 1938 Sunday School reminder card.

Carolyn Middleton's three dressed cats each holding a doll; **Dede Schaeffer** showed her father and his two brothers on a real photo card and

Jim Ward concluded with a pair of German cards, showing the disposition of a man when engaged, married and divorced with the second card showing the same events of his wife whose disposition in the final stage left no doubts that it was she who instituted the divorce proceedings. Many thanks to the participants for their contributions and explanations

Free Card Inserts

300+ big Thanks go to Maria and Win Schurz for this month's free postcards. You might receive an early chrome of the Pasadena Freeway, or an early chrome of New Chinatown in LA or a linen showing a pelican family in Southern California. If you have a view – or several different ones, that you wish to donate for inserts in a future issue of *The Card*, contact the editor (see address on masthead). We should have at least 325.

47 Members Buy *The Journal*

Dutchmen who recognize a bargain.

Since your *Card* editor took over the Postcard History Society's quarterly, the subscriber's list has grown - not by leaps and bounds - but by one faithful reader at a time. They live in Washington, Oregon, Maine, Vermont, Florida, Georgia, Texas and Arizona and other great places in between. Forty-seven collectors from our Lancaster club are readers, too. They know a bargain when they see one.

Since I took over John McClintock's job four years ago, I've amended the PHS publication's name. It's *The Journal of the PHS*. More importantly, it has an extra section offering 100s of cards for sale; it has a variety of articles from several pages long to single cards; it's printed on 3-hole pages for easy storage and every page is loaded with illustrated postcards and the stories they tell.

The crux of *The Journal* is the same as *The Card* – education and entertainment through postcards, but we go beyond local interest and cover every subject known to man – known to man *on a postcard*. Often the ideas are contributions from readers. For instance, one reader offered source material on early PC clubs in the USA including the Jolly Jokers.

Some readers have special wants and their free classified ads are always welcomed – another opportunity to fill their needs with national coverage. Cards featured in many articles are offered for sale in the same issue. (A favor I never requested in *The Card* but one that helps to financially support *The Journal*.)

For \$7 you get four 14-page issues each with a full color cover, postage included. Beginning with the 2003 year (the March issue) local subscribers can save \$1, if they pick up each issue at the meetings in Lancaster or York. Why not give it a try? If you'd like a taste test, mail \$1 and a #10 SASE and I'll send you a back issue to sample.

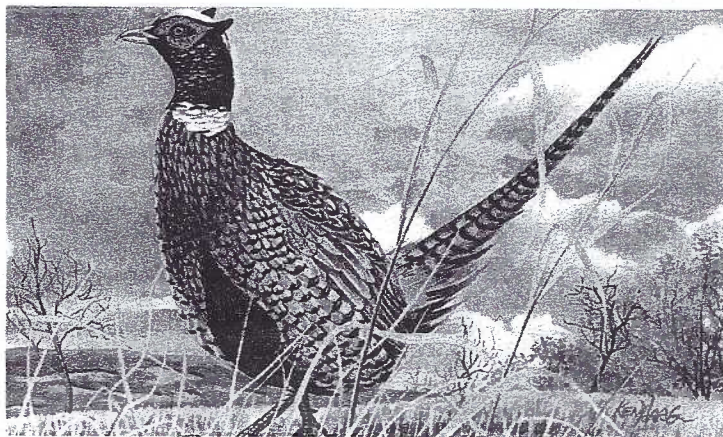
Checks made to Jim Ward for \$7 and sent to the LCPC address will constitute a 2003 subscription.

LIKE A LITTLE COLOR?

We'll return to occasional color in *The Card* if we sell more books. Members may still buy *Windows to Our Past, Volume Two* for \$25. Cost to the public is \$30. Contact Ray Dennis (290-7948) or Jim Ward (721-9273) for pick-up or delivery arrangements. The price for *Volume One*, if you can find any, ranges from \$60 and \$75.

February Program

In February we'll hear from perennial favorite **Earl Carver**. His subject, possibly chosen for the road on which he lives, is Pheasants. He'll entertain and educate us via a slide presentation. We look forward to it.



South Dakota State Bird

The Chinese Ringneck Pheasant is from the set of fifty state birds published by Capital Engravings, Pequot Lakes, MN in 1966. This desirable set is in full color and can often be found as single cards in dealers' stock, in case you're looking for particular states. Per card prices are generally under \$2.

Cover Cards

During the golden age of postcards publishers managed to have ample cards for every holiday and commemorative event. Honoring Pres. Abraham Lincoln was a no-brainer. There were hundreds of sets of postcards featuring his portraits, his life and, quite often his speech at Gettysburg.

Our four cover cards, along with the two below, are a set issued to celebrate the centennial of Lincoln's birthday. The Century Company cards each include a familiar quote, two vignettes from his life and a Matthew Brady photograph.

Century published books. Two of the cards have a printed message on the back – "If you are interested in a list of notable books about Abraham Lincoln – the greatest books in print on the greatest of all Americans – The Century Co. will gladly send such a list on request." Beneath the message are two lines on which you could write your name and address. The cards are pre-addressed. One has a Fourth Ave. address, the other is Union Square in NYC. Technically, these can be considered advertising cards.

1809—LINCOLN CENTENARY—1909



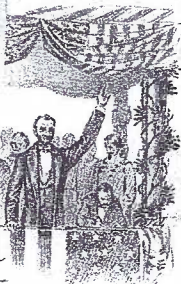
LINCOLN DURING HIS PRESIDENCY.
From a photograph by Brady.



GETTING AN EDUCATION.

That we here highly resolve that these dead shall not have died in vain; that this nation, under God, shall have a new birth of freedom; and that government of the people, by the people, for the people, shall not perish from the earth.

—From the Gettysburg Address.



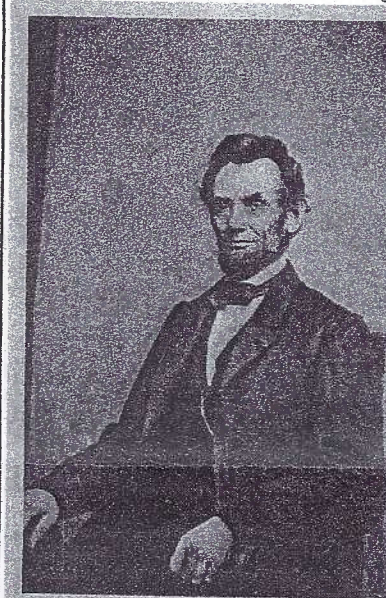
LINCOLN SPEAKING ON THE
ROSTRUM AT GETTYSBURG.

16th President.

1809 - 1865.

Andrew Johnson
was 17th President.

Copyright, 1908, BY THE CENTURY CO.

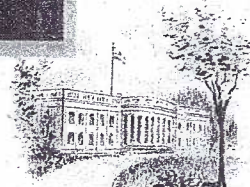


LINCOLN DURING HIS PRESIDENCY.
From a photograph by Brady.



EARLY HOME.

If I could save the Union without freeing any slave, I would do it; and if I could save it by freeing all the slaves, I would do it; and if I could save it by freeing some and leaving others alone, I would also do that.
—Lincoln's letter to Horace Greeley, Aug. 22, 1862.



WHITE HOUSE.

Copyright, 1908, BY THE CENTURY CO.

A REMINDER. Dues should be sent before the end of our club's fiscal year, March 2003. There's an increase, after many years – single membership is \$10 and \$5 for additional member at the same address. Send check to LCPC, c/o Betty Beck, 11 Cinder Hill Dr., Lititz, PA 17543. Thank you.

Library Books Tentatively Scheduled for Sale

The board of directors has deemed it appropriate to pare down the size of the club library, for the sake of storage as well as disuse. The following books in LCPC's library have been culled by the committee and will be offered for sale at the March meeting. They've been chosen for lack of use, duplication of information, or out-dated information. Members who donated any of these books are welcomed to accept them back rather than have them sold in March. Please contact Bryan Benner immediately at 391-8127. Condition ranges from very good to new. Some of these books could be an asset to an individual collector's library. Make an effort to get to the March meeting if you're interested. An amended list will be published in the March *Card*. Library Team Members: Please bring the books listed below that are in your section to the February meeting

TITLE

The Super Rare Postcards of Harrison Fisher with Price Guide
A History of Postcards
How to Price and Sell Old Picture Postcards
Picture Postcards
Pictures in the Post
Postcard Collector Annual, 2nd edition, 1992
Postcard Collector Annual, 4th edition, 1994
Postcard Companion, The Collectors Reference
The Collectors Guide to Postcards (2 copies)
Collectors Guide to Postcards
The Fascinating Hobby of Collecting Picture Postcards
Mail Memories
The Official Price Guide to Postcards
The Postcard Price Guide, 1st edition
The Postcard Price Guide, 2nd edition
Rare and Expensive Postcards, Book Two (2 copies)
Patriotic Postcards
Long Beach City Store
Old New Jersey Postcards
Old Trolley Postcards
Old Time Baseball Parks
Seasons Greetings
Image File (various issues)
Fantasy Postcards
Transportation Postcards
Postcards from Kew (eliminate 1 copy only)
Checklist of Sunbury and Rolling Green Park, PA
Greetings from Maine
Greetings from New York
Historic Postcard Album of Allegheny County, MD & video
Old Milwaukee, A Historic Tour in Picture Postcards
Loose Leaf Notebook of Various Postcard Articles from Magazines

AUTHOR or PUBLISHER

Mashburn
Willoughby
R. Cox
Hill
Carline
Lengkeek
Lengkeek
Smith
Woods
Lyons
Mowrey
Kaduck
Allmen
Mashburn
Mashburn
Kaduck
Kaduck
Reprint Postcards
Reprint Postcards
Reprint Postcards
Reprint Postcards
Reprint Postcards
Curt Teich Archives
Ouellette
Kaduck
Lewis
Martz
Harding
Tucker
Feldstein
Filardo
Various

NEW MEMBERS

#694 Al Schaub, 716 Woodfield Drive, Lititz, PA 17543. Ph. 1-717-560-6278. Collects restored naval ships, Cuba and Key West, FL.

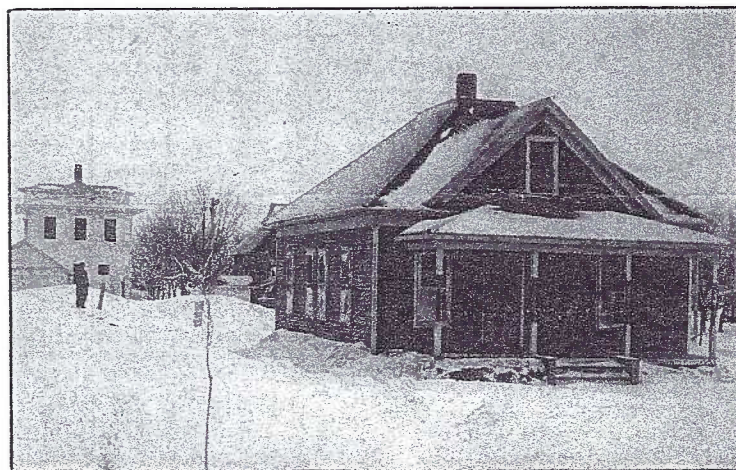
#695 James Elsasser, 285 Bushong Road, Leola, PA 17540. Ph. 1-717-656-9828. Collects hotels, resorts, restaurants and natural attractions.

#696 and #697 Howard Lipman and Theo Reinke. 1502 Glenside Road, Downingtown, PA 19335. Ph. 1-610-518-5667. Howard likes real photos, artist-signed, Halloween, linen Roadside America, French cards (Kirchner, Mucha, etc.); Theo has a general interest.

#698 Brian Sinclair, 1194 Knights View Road, Wrightsville, PA 17368. Ph. 1-717-252-2353. Collects Wrightsville and local river town.

The club's official member count (364 in the new roster) is now 369 with this month's new members. This is an all-time high for our 13-year history. Congratulations to everyone!

Our fiscal year ends next month – March. Members who joined at the August Expo or since then have paid their dues through March 2004. If you are not one of these new members, we remind you to send your check, made to LCPC, c/o Betty Beck at 11 Cinder Hill Rd., Lititz, PA 17543. It is \$10 for the year plus \$5 for each additional member at the same address. Thank you.



This 1904 - 1918 era real photo postcard was not mailed but the penciled date (1915) and its message are timeless. "This is a snow bank in my back yard. It was as high as the clothesline. That is me standing at the post that holds up the line. We had some snow here this winter and not near all done yet".

Should you be in doubt about a meeting due to inclement weather, call Bryan Benner 391-8127 or Doug Milliken 295-3135 or Dede Schaeffer 392-3955 or Jim Ward 721-9273.