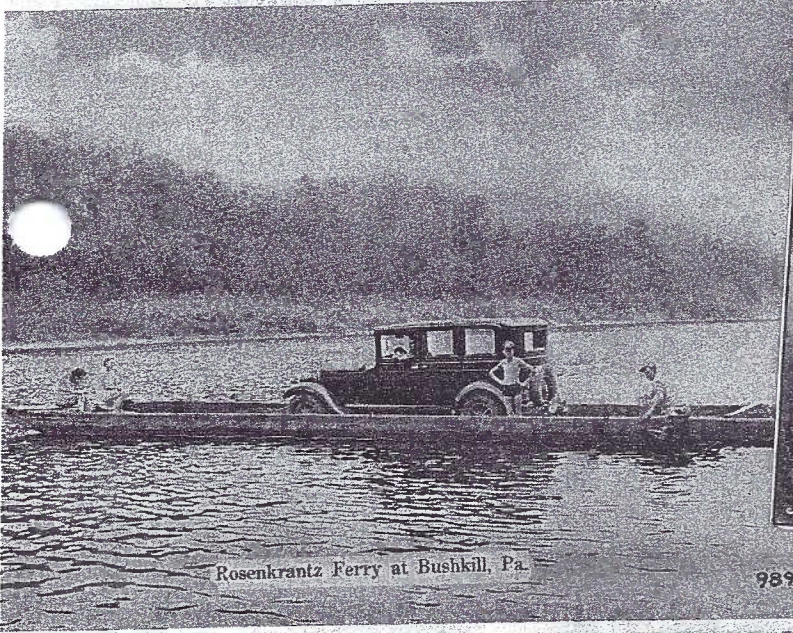
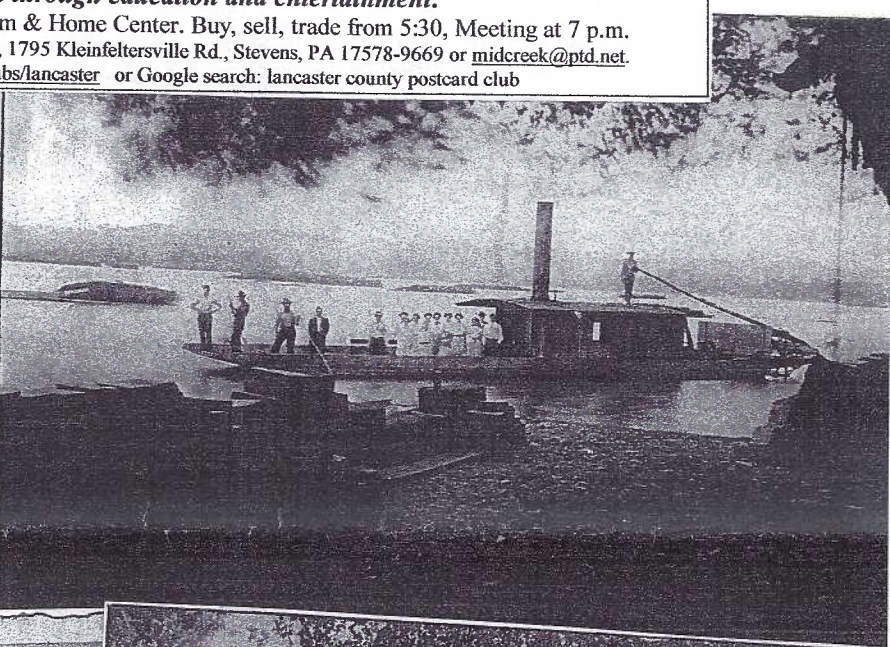
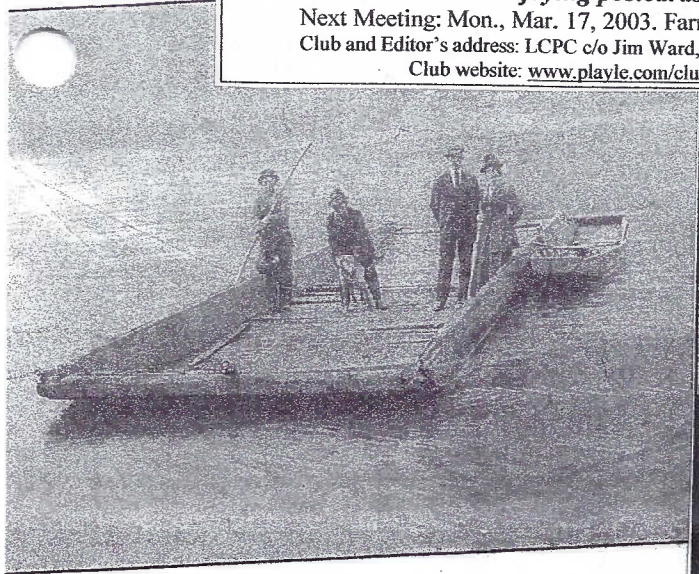


THE CARD. Vol. 14, No. 23. Issue 159. March 2003.
Monthly publication of The Lancaster County Postcard Club, Lancaster, PA.

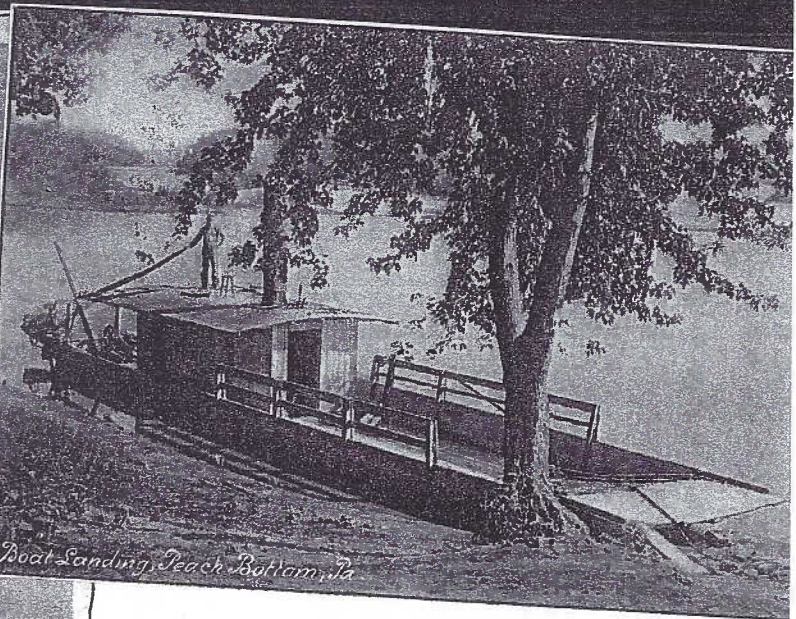
Enjoying postcards through education and entertainment.

Next Meeting: Mon., Mar. 17, 2003. Farm & Home Center. Buy, sell, trade from 5:30, Meeting at 7 p.m.
Club and Editor's address: LCPC c/o Jim Ward, 1795 Kleinfeltersville Rd., Stevens, PA 17578-9669 or midcreek@ptd.net.
Club website: www.playle.com/clubs/lancaster or Google search: lancaster county postcard club



Rosenkrantz Ferry at Bushkill, Pa.

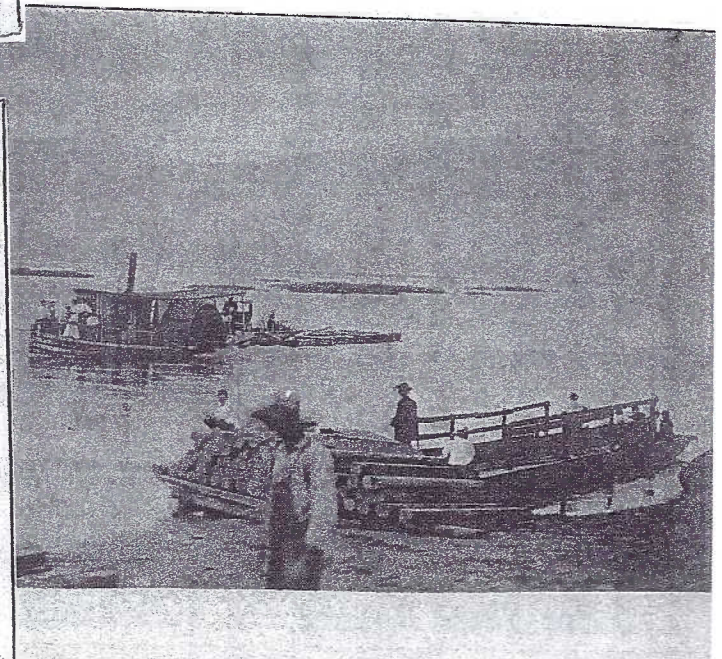
9891



Boat Landing, Peach Bottom, Pa.



MEYER'S PERRY, NEAR DELAWARE WATER GAP, PA.



No News for February

Two Foot Storm Cancels Meeting

This month's *Card* has nothing to report for the Feb. meeting. The predicted storm was for Sun. and Mon., Feb. 16 and 17 and we got it! So much so that no one found it necessary to call officers or directors to question whether or not there would be a meeting. End of a no story.

March will be a different matter. One of our more popular meetings is the **Free-For-All**. That's exactly what it means, any member may bring whatever **paper items** – including postcards and not pay for rental space. Set up a table, half a table, or share a table with several people on a first come, first served basis – any time after 5 PM. Please do NOT take more than one table unless we find that by 6:30 there is extra table space available. The Farm & Home Center folds back the doors allowing us a little more breathing space but we must NOT use the round table area for sitting or storage. We rent only 1/3 of the hall for our monthly meetings.

The board topic for March is **The Weather**. Members are reminded to give Ruth Moyer, prior to the voting, any information they wish her to read about their board. Use one side of a 3x5 card please. April's topic is Family and it will be a single card.

The board of directors has deemed it appropriate to pare down the size of the club library, for the sake of storage. The following books in LCPC's library have been culled by the committee and will be offered for sale at the March meeting. They've been chosen for lack of use, duplication of information, or out-dated information. Condition ranges from very good to new; some of these books could be an asset to an individual collector's library.

Library Team Members: Please bring to the March meeting the books listed below that are in your section

TITLE

The Super Rare Postcards of Harrison Fisher with Price Guide
A History of Postcards
How to Price and Sell Old Picture Postcards
Picture Postcards
Pictures in the Post
Postcard Collector Annual, 2nd edition, 1992
Postcard Collector Annual, 4th edition, 1994
Postcard Companion, The Collectors Reference
The Collectors Guide to Postcards (2 copies)
Collectors Guide to Postcards
The Fascinating Hobby of Collecting Picture Postcards
Mail Memories
The Official Price Guide to Postcards
The Postcard Price Guide, 1st edition
The Postcard Price Guide, 2nd edition
Rare and Expensive Postcards, Book Two (2 copies)
Patriotic Postcards
Old New Jersey Postcards
Image File (various issues)
Fantasy Postcards
Transportation Postcards
Postcards from Kew (eliminate 1 copy only)
Checklist of Sunbury and Rolling Green Park, PA
Greetings from Maine
Greetings from New York
Old Milwaukee, A Historic Tour in Picture Postcards
Loose Leaf Notebook of Various Postcard Articles from Magazines

AUTHOR or PUBLISHER

Mashburn
Willoughby
R. Cox
Hill
Carline
Lengkeek
Lengkeek
Smith
Woods
Lyons
Mowrey
Kaduck
Allmen
Mashburn
Mashburn
Kaduck
Kaduck
Reprint Postcards
Curt Teich Archives
Ouellette
Kaduck
Lewis
Martz
Harding
Tucker
Filardo
Various

Future Shows

This many shows, this close to home, can only mean Spring is just around the corner!

Mar. 9 New York City Metropolitan PC Club New Yorker Hotel

Mar. 9 Chambersburg, PA Sheraton Four Point Hotel, Rtes. 3 and I-81

Mar. 15 Towson, MD Days Inn, Bombay Grill, Beltway I-694 exit 29, Loch Raven Blvd.

Mar. 28-29 Lancaster, PA Farm & Home Center Rte. 72 near Rte. 30. (See insert discount PC)

Mar. 28-29 York, PA York Book and Paper Show Apr. 4-5 Havre de Grace, MD Community Center

MORLATTON POST CARD CLUB INC.

28th Spring Postcard Show



Farm and Home Center
1383 Arcadia Road
Lancaster, PA 17603
(off Manheim Pike Rte. 72)

Friday, March 28, 2003 - 10 A.M. to 6 P.M.
Saturday, March 29, 2003 - 10 A.M. to 4 P.M.

Admission \$1.50
(25 cents off with ad)

For more information call
Kay Feight, (717) 263-1638
Leon Rowe, (610) 444-0641

No Pre-Show Buying

Cover Cards

Pennsylvania Ferry Boats

These are just a few samples of early ferryboats in our commonwealth. They existed before and during the postcard era. Their small size and primitive shape of the early ferries harkened to the days of Tom Sawyer. Compared to the ferryboats of today (hundreds can be found on color chromes) these early flatboats plied the currents of Pennsylvania's major rivers and creeks.

If you never rode on a ferryboat, promise yourself to do so this spring, summer or autumn. Close at hand is the Millersburg Ferry. It can be boarded at Millersburg, just north of Harrisburg off Rte. #147 or from the west shore south of Liverpool off Rtes. #11 and 15. Walk-on passengers pay \$1, car and driver are \$4, a 12-15 passenger van and driver is just \$5. If you have a horse-drawn vehicle, that's \$3. A few summers ago your editor was the fourth car in line on the west-shore. The boatman signaled me to get on first. He liked convertibles at the front of the boat, "easier to see over." The Millersburg Ferry Boat Association offers chartered cruises for up to 35 people at \$50 an hour. They're available all day Monday through Saturday before 1 PM and after 6 PM.

Left column, top to bottom -

The boatman can be identified with his long pole on the left. The card was mailed Mar. 30, 1912 from Marshall (Butler County) to Allegheny, PA. "This is the boat you crossed the river on when you were here." The writer refers to Breakneck Creek.

Numerous ferryboats crossed the Delaware River on PA's eastern border. This one was at Bushkill, a small PA community on the Pike-Monroe County border opposite Sussex and Warren Counties in NJ. The boatman sits in the rear. The passengers include two women enjoying the summer sun, a youngster in his swimming suit and the driver seated behind the steering wheel. Rosenkrantz/Rosencrans was a prominent name in northeast PA. Dexter Press printed this b/w card for the Monroe County Chamber of Commerce. The postcard has a deckled edge.

Just south of the Bushkill crossing was the Delaware Water Gap. Meyer's ferry provided similar service. This is R-46663, a color card printed by Curt Teich for local publisher A. A. & L. M. Hauser of Delaware Water Gap.

Right Column, top to bottom -

This ferry crossed the Susquehanna River from Peach Bottom, Lancaster County to Peach Bottom, York County. Its last operators were members of the Lancaster County Shank family.

The d/b photo card was mailed to Mr. B. C. Dunkle, McCall Ferry, PA on Nov. 6, but the year is obscure. MF became Holtwood when the post office name was changed May 13, 1911. So we can date the card from March 1907, the beginning of the divided back postcard era, to 1911.

M. Shank's message - "The cards received. Thank you very much for them. Will look for you down some time in the near future." A Dunkle relative believes his great uncle could have made the real photo postcards. This ferry carries no fewer than a dozen passengers. Two pole men can be seen to the left and the man on the roof steers with the massive rudder that extends beyond the paddlewheel at the rear of the boat. The Peach Bottom ferries carried cargo more often than people. Neatly stacked lumber can be seen on the shore.

John Klein Postcards



**Rte. #272
At Exit 21
PA Turnpike**

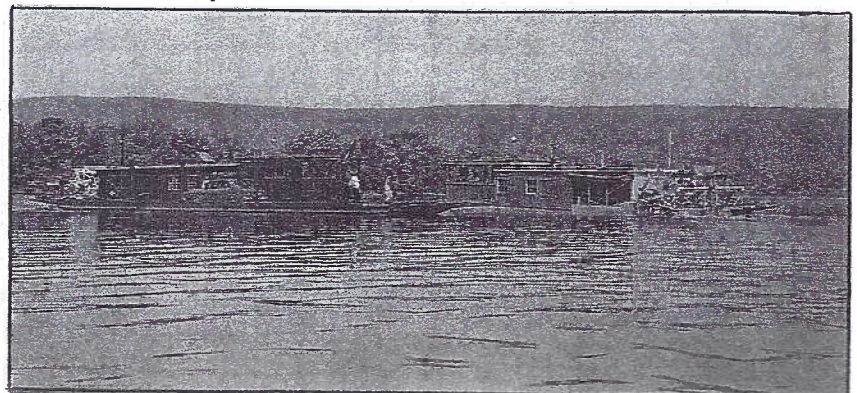
**Saturday 10-5
Sunday 8-5
Monday 10-5**

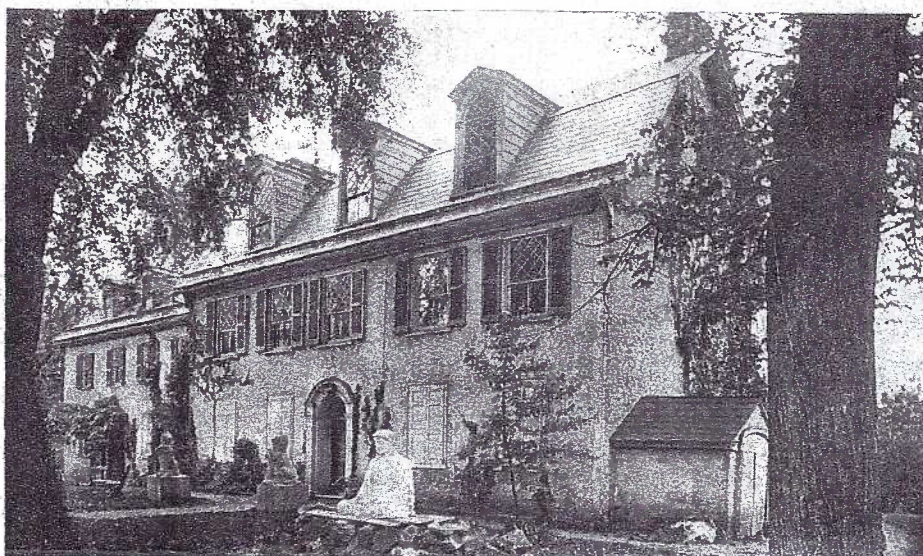
B. Manley writes on a second Peach Bottom ferryboat postcard, #57505 by Rotograph, "Dear Nora, I am down for a week. Came on the auto and to Love's/Lowe's Island in the boat."

In your two volumes of *Lancaster County Postcards, Windows to Your Past*, you'll find more information about the Peach Bottom ferryboats.

An early u/b card shows the Millersburg Ferryboat with its side paddlewheel. A pole barge can be seen in the lower right of the photo.

Today the Roaring Bull and Falcon ply their way across the Susquehanna at Millersburg. On the color chrome card below, the two boats pass in the middle of the river. The card reads, "Service is continued by these two old stern-wheelers, last survivors of many paddle wheelers that operated in Pennsylvania since 1826. As of 1971, the Millersburg Ferry became a State Historic Landmark."





Old Windsor Forges, Churchtown, Pa. Owned by Miss Blanche Nevin
Weaver & Hawk, Publishers

The Jenkins' ancestral family home, Windsor Hall, was renamed Windsor Forges when Blanche bought it for \$18,000 from her cousin and restored it in 1897. Express Print Co. of Lititz printed this b/w view for Churchtown publishers, Weaver & Hawk.



This is the beautiful view Blanche saw from her home. Her message on this Aug. 13, 1909 card invites Ella Livingood of Reading to her home that month.

Seasonal Connections

Should you be unsure about our meeting because of inclement weather, call one of these officers or directors after 2PM on the meeting day.
Pres. Bryan Benner 391-8127
VP Doug Milliken 295-3135 dmilliken@mindspring.com
Secy. Gisela Withers 610-582-2131
Treas. Barabra Mowrer 684-5331
Mark Arbogast 464-0411
Ray and Carol Dennis 290-7948
Dede Schaeffer 392-3955
Dale Shaub 295-4542
Jim Ward 721-9273 midcreek@ptd.net

An example of Blanche Nevin's humor – "Owed" To The Lancaster Dutch

First

Hurrah for the Lancaster Dutch!
To earn us our bread
He goes early to bed,
And rises while yet it is dark
He anticipates even the lark
He milks all the cows
He plants and he plows.
That a sleepy old world may be fed.
Hurrah for the Lancaster Dutch,
Our Country's reliable crutch.
He has wheat, he has corn, he has oats,
He has horses and cows, he has shoats,
Geese, turkeys and chickens to pluck;
And a baby each year, "if in luck."
He deserves every cent in his hutch.
Hurrah for the Lancaster Dutch.
The wife of the Lancaster Dutch
With suffragettes isn't in touch,
Her vinegar kegs
Her butter and eggs
Attention absorb overmuch.

Second

She hardly can heed
Roosevelt's praises indeed
Not compliments bothers to read,
She stews and she fries,
She makes pumpkin pies,
She shines pot and pan,
She darns for her man;
She sews and she knits,
Dried cherries and snitz,
With pretty brown eyes
Each crêvice she tries
To sweep and to scrub everys-mutch.
She bakes
And she makes
Griddle cakes.
And sausage, and paunhous,
and sauer-kraut,
And doughnuts, sweetizer, noodle soup,
scrapple
And swEIFleish, and stink case,
and dumplings of apple.
Huh! The wife of the Lancaster Dutch
Don't trouble with politics much
Heaven grant her hereafter a wreath,
And in this world – the best of store teeth.

Third

At last when "the farms" they resign,
And go up on their "Hook and Hair line."
Their mansion in Heaven to enter
Their Amish and Mennonite center,
The shutters they close here so tight,
Will open to fresh air and light.
And shining white robes they will wear,
Without hooks or buttons up there.
They will not have to wait
Very long at the gate.
As may be your lot, or my own.
When we seek the eternal bright throne.
For truly our Lord understands
The religion of labor-worn hands,
Of eloquent noble worn hands,
Which the Fisherman Peter will clutch
To welcome the Lancaster Dutch.

Blanche Nevin
Windsor Forges,
Sept. 7 (between 1901-1909)