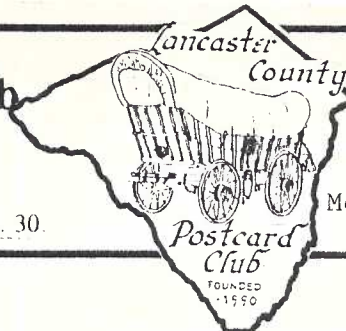


YOU ARE INVITED TO JOIN THE NEW
Lancaster County Post Card Club

MEETINGS - THIRD MONDAY EACH MONTH

1821 Municipal Drive, Lancaster, PA

Manheim Twp. Municipal Bldg., Rt. 272 half mile north of Rt. 30.



LCPC NEWSLETTER

AUGUST 1990

Vol. 1 No. 7

Next Meeting:

Mon., Aug. 20, 1990 7 p.m.

Dear Fellow Members and Future Members

This freighter, marooned off the coast of Honduras, is part of our member-presentation for the August meeting. Historical, hysterical, beautiful and bawdy - don't miss it!



AUGUST PROGRAM

Charlie's Show-n-Tell Album

Our distinguished Treasurer, Mr. Griffiths, the squirrel that he is, (aren't we all?) when he ridded himself of his 300,000 card stock several years ago, held on to one album of 'show-n-tells' which he will share with us via colored slides at the August meeting.

Charlie, for many years, was a regular at both Shupp's Grove and Root's Country Market with his postcard stock. He can tell you of the 'good ol' days' when albums were bought at public sale by counting cards 2¢ each. And he remembers the days when finding a buyer for a nice Lancaster real photo at \$2 was no easy feat!

Can you possibly imagine what he held back

for himself? having passed through several million postcards? No need to imagine! Be at the August meeting and see!

Charlie is quick to say that these are not necessarily expensive, rare cards - just the ones that he liked.

The RFD program by Jose Rodriguez will be re-scheduled for the November meeting. Next month: our second Postcard Auction!

NEW MEMBERS

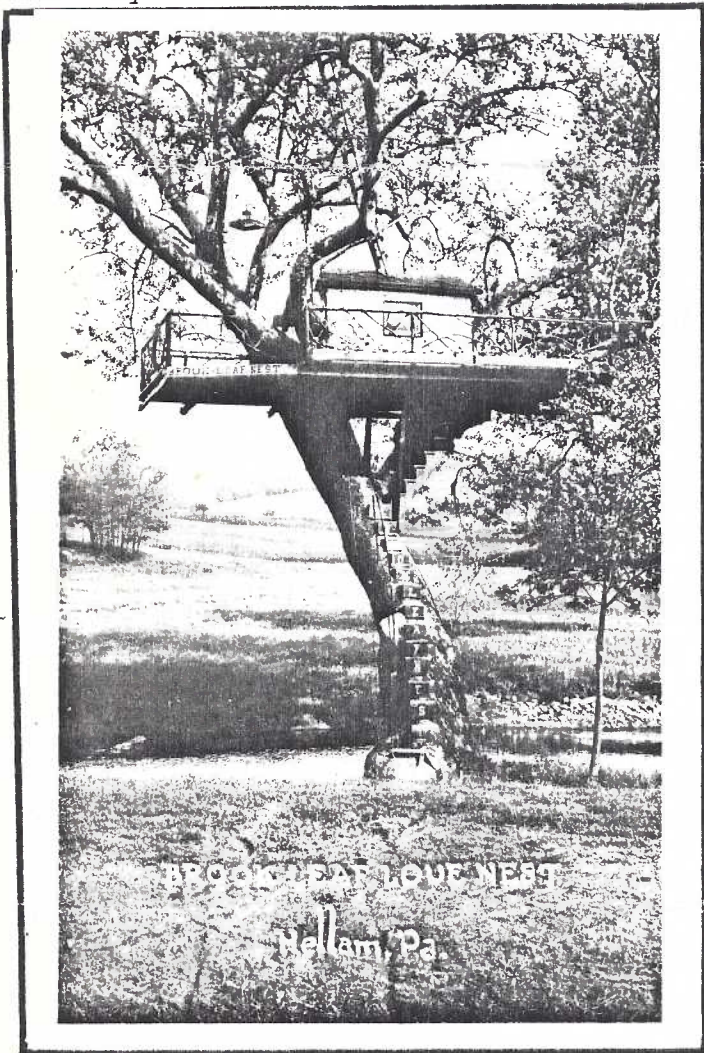
We welcome these two members to LCPC-
#67 GARY HAWBAKER - collects photo cards of people, places in Lanc. County (early items).

#68 JOAN LEHMAN - Thos. A. Edison, old phonograph players, other musical, historical related postcards, stamps, FDC's, etc.

Correspondence address: P.O. Box 300, Lititz, Pa., 17543-0300. (Same address for President Jim Ward phone 717-626-4660.) Other elected officers: Elizabeth Graver, Secretary; Charles Griffiths, Treasurer. Appointed officers: Directors- Earl Carver, Don Davis, Dan Good. Publicity: Shirley Neidermyer. Exhibit Boards: Dede Schaeffer. Librarian: Alice Goddard. Greeter: Mary Darrenkamp. Membership: Earl Carver. Mailing: Peg Hanna and Helen Helinger. 50/50: Harry Lines and Anne Steinberg. Historian: John Long. Auctioneers: Gordon McKinzie and Merv Wenger. Newsletter: Jim Ward.

Jim Rudisill, our new member from the backwoods of Mt. Wolf (York Co.) came across a recent article that should clear the air for some of us who've seen this card from Hellam.

It would seem the treehouse was built by 3 sons of the Emig dairy family. The Phila. Inquirer featured it in an article as a promotion: it was a honeymoon tryst for the winners for one week. One York reader (of the recent article) said she and her new husband stayed there in 1945.



Soon after, it met its fate by fire. It was either a train spark, delinquent boys or a hobo's cigarette.

The real photo card has an AZO/square stamp box which dates it between 1920 and 1940's.

MARY'S BACK!

We're so glad to see Mary Darrenkamp, our cheerful Greeter is back after severe surgery on her knee. If you know of other members with severe ailments, let us know so we can inform the LCPC members.

LCPC members enjoyed pleasant air-conditioning in July. Expect the same in Aug.

Roy Nuhn wrote a fine article in Barr's Post Card News about Real Photo cards and how to estimate their age by the type of stamp box on the reverse. Although they are only estimates, these year-ranges can be very helpful. Keep this for future use.

REAL PHOTO Post Card Major Brand Mfrs.

VELOX	1901-1920
SOLIO	1903-1920s
CYKO	1904-1920s
EKKP	1904-1950
ARGO	1905-1920
PMO	1907-1915
ARTURA	1910-1924
DEFENDER2dmd	1910-1920
" lg.diamnd	1920-1940
AZO triangle	1918-1930
AZO squares	1920-1940s
VITAVA	1925-1934
AGFA ANSCO	1930-1940s
DOPS	1937-1942
EKO	1942-1970
EKC	1945-1950
ANSKO	1940-1960
KODAK place stamp here	
- paper	1950-present



STAMP BOX
SAMPLE



STAMP BOX
SAMPLE

JULY PROGRAM PARTICIPANTS

These enthusiastic members were able to tell us about a favorite postcard, or, in some cases, ask what the rest of us knew about a certain card, in two minutes each: Howard Steinberg, Don Davis, John Long, Bob Kramer, Harold Moyer, Jim Rudisill, Charlie Griffiths, Jim Ward, Paul Smoker, Earl Carver, Dan Good, Daisy Schaeffer, Jerry Hostetter, Peg Hanna and Jim Luty

Several members had forgotten to bring cards along, but the discussion was so enjoyable, that they spoke anyhow! It was a new type of Program, but the informality was just great. Let's do it again!

PATRIOTIC EXHIBIT BOARDS

July closed at the LCPC with these fine exhibit boards and their creators- First: Anne Steinberg (Uncle Sam installment) Second: Sandy Shaub (framed collage) Third: Jim Ward (Nasty Nash) and Earl Carver (Symbols of Liberty).

Thanks, folks. And now the rest of you can get busy! August's subject was announced by Dede Schaeffer as being **VACATIONS AND TRIPS** and you can really plan ahead, because September's subject will be **CHILDREN**.

A slim 20-page Price List is among this month's donated 'books' to our Library. It was published by a Denver, Pa. dealer, Paul Mowrey. Here's a sample page. Read 'em 'n weep! Help is needed for a date.

R	
Roosevelt Bears	1.00
Roosevelt in Africa, Hunt or Tour	.20
Roosters - German American	.35
Roses - Tuck Oilette	.25
Royal Horse Artillery - Tuck Oilette	.35
Royal News Buckingham Palace - Tuck Oilette	.30
Royalty (several) - Tuck Oilette	.35
Rural Life - Tuck Oilette	.25
Russel Chas. H. Cards by (original prints)	1.25
Rustic Felicity - Ullman	.25
S	
St. Louis Pageant (6)	.50
St. Louis Series - Tuck Private Mailing	.45
St. Patrick Day - Tuck or Ullman	.20
Santa Claus small .15 medium .25 full length	.35
Scottish Clans Tuck Oilette	.50
Seaforth Highlanders - Tuck Oilette	.25
San Francisco Earthquake (several sets)	.20
Seasons Bears - Benedict or Porter	.35
Senses (several series)	.30
Sentiments of the Month (Horoscopic) - Tuck	.35
Shakespeare - Faulkner	.35
Shariden's Ride (blue border)	.75
Sketches of Doggies - Tuck	.35
Smokers Set - Detroit Publishing Co. 1907	1.00
Spanish American War Series Pioneer Reprints	2.00
Spanish Embroidery Cards (modern)	.65
Sport Girls - National Art Co.	.25
Sporting Dogs - Tuck Oilette	.35
Sports - Int. P. C. Co. by Christy	.30
Sporty Bears - Ullman	.45
Stamp Series - Zieher (before 1915) not reprints	1.25
Stamp Series - Huber (foreign)	1.50
Stamp Series - Miffet Co.	1.25
State Belles (45) - Tuck 2669	1.00
State Capitols & Seals - E. C. Kropp (Seal in Color)	1.00

ROCKY SPRINGS LIST AVAILABLE

At the August meeting, Charlie Griffiths will have a list of Rocky Springs postcards excerpted from his extensive list of local publishers, so that those interested in the subject can check their own cards. Charlie has included only those cards which specifically refer to R.S. in their caption.

THE LISTS ARE FREE! Ask for one.

LIBRARY DONATIONS

Standard Postcard Catalogue (Jas.Lowe)1982
donated by Dan Good

Fantasy Postcards(hc) (Wm. Oilette)1975
donated by Charles Griffiths

Erotic Postcards(hc) (Wm. Oillettel)1977
donated by Charles Griffiths

A Picture Postcard History of U.S. Aviation
(Jack Lengenfelder)autographed copy,1989
donated by Paul Smoker

The Fascinating Hobby of Collecting Picture
Post Cards (Paul Mowrey)(no date)1940's(?)
donated by Charles Griffiths

18 Books are now a part of our LCPC Library
Alice Goddard, librarian, announces. Over
half of them are on loan this month!

PROJECTS FOR THE LANCASTER COUNTY POSTCARD CLUB

Research local pc publishers such as:
DAVID BACHMAN LANDIS
JOHN ZOOK(Express Printing Co.)
FANNIE ANDREWS

Continue with Charlie Griffiths' extensive
list of local publishers/printers.

Compile list of unusual sized local
postcards (doubles, under-sized, over-
sized, multiple=views,etc.)

Compile list of 'greetings' including all
generics, leathers.

Compile a list of City and County advertise-
ment postcards.

Compile list of local covered bridges -
past and present.

Compare local 'folders' by content,
publisher (incl. 'hidden views').

Research The Little Art Shop, including
Misses Coppinger and Griel.

Compile list of Campus Cards: MSTC,F & M,
and Elizabethtown,perhaps other private
schools as well.

Assemble group of all local cards with dif-
ferent types of transportation, such as
trolleys or horse-drawn wagons.

Develope a format for individual towns so
we have a 'standard' method to follow when
we assemble our cards in albums or boxes.

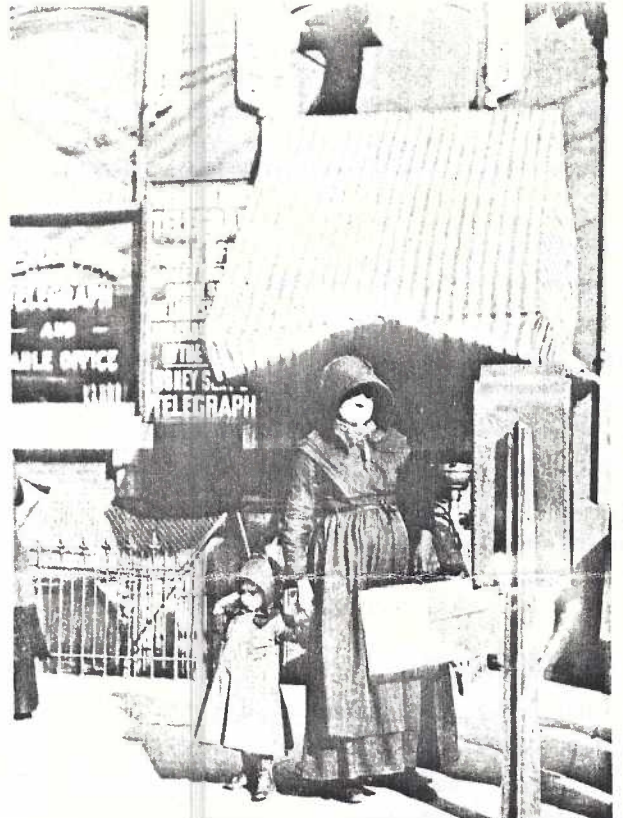
and last but not least:

Compose a book (similar to Geo. Miller's on
Pennsylvania Postcards or the Chester
County Postcard volumes) but on our own
Lancaster City and/or County.

Real Photo card shows NE corner of Center-Penn Square then Western union office where most east-bound trolleys stopped.



Real Photo card shows SW corner of Center-Penn Square in background



MARTHA, THE MENNONITE MAID

L.B.Herr card. Model??(Amish bonnet worn too far front; hair shows near eyes) What's your opinion?

Market — Day Lancaster!

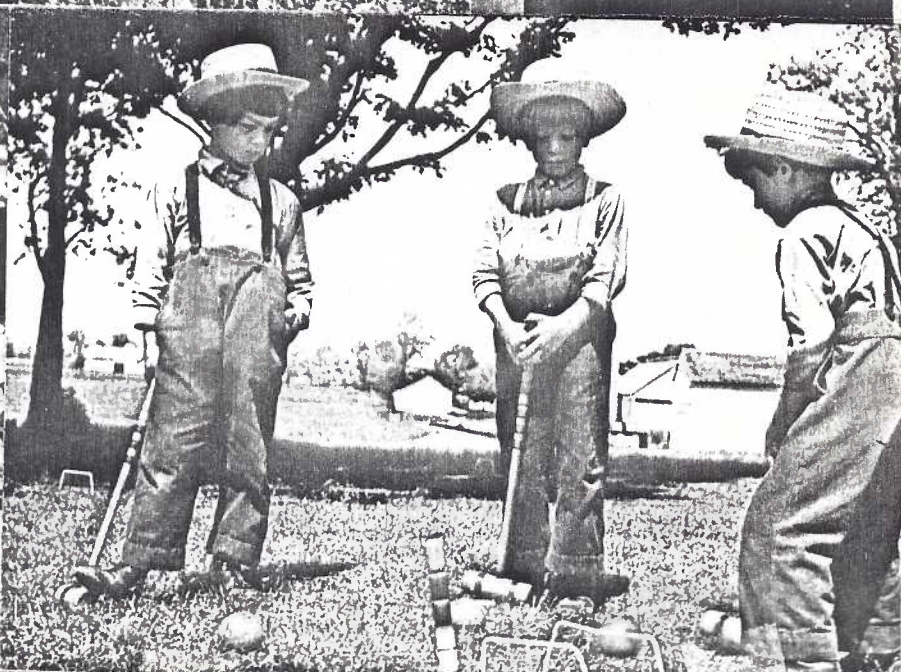
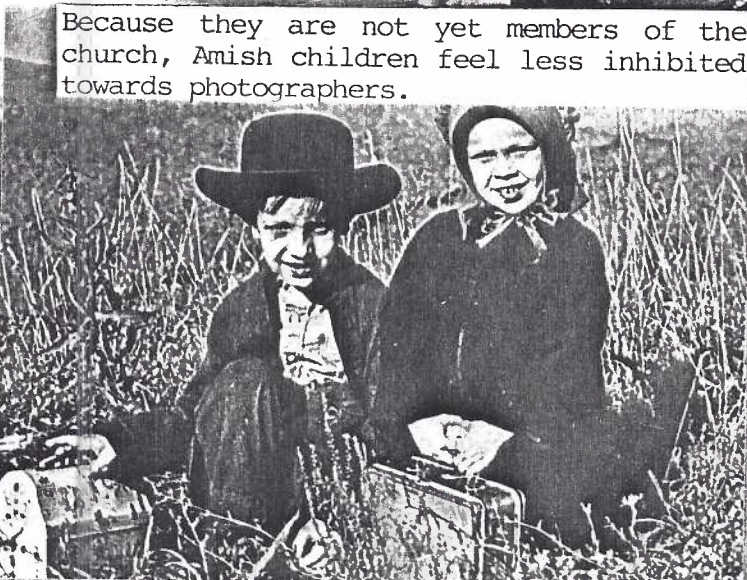
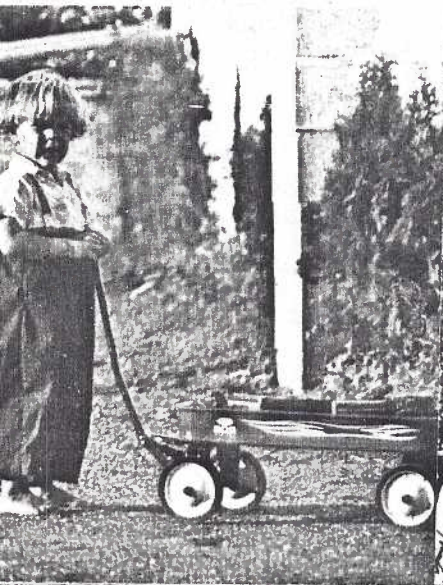


Little Art Shop postcard, hand-colored.
Artist was Alice Malone.

A COLLAGE OF AMISH CHILDREN

Amish - like many children - are photogenic either in school or at play. This is a page of 'chromes' from the '60's and '70's by Jim Hess and Stel-Mar.

August 1990 pg.5



REAL PHOTO REPOS

Made in the 1970's, over 100 very nice real photo postcards recently surfaced. They are views of Lancaster City and Lancaster County towns, York towns and more.

Some of the views are entirely new (never seen on postcards before) and may well be worth the \$3 to \$5 price tag. But if you are in doubt, ask the seller if they are repros or genuine old postcards. Honest dealers will have them clearly marked.

How do you tell this type of reproduced real photo postcard? Erasing the sepia-colored reverse (with a pencil eraser) will leave a whiter color. Sometimes the printed "Post Card" can even be erased. The corners are sometimes faked, as well, to suggest long storage in postcard albums.

NEW NEWSLETTER FORMAT

Your comments and suggestions are most welcomed to our new Newsletter format. The aim is reading ease. Hopefully we will reach our goal. Word Processors can be very intimidating to a novice!

\$15 REWARD

Was paid by Jim Luty to Jose Rodriguez for info Jose was able to supply concerning the location of a postcard scene. Howard Steinberg was heard to say, "No way, Jose!" Several witnesses saw Howard was second in line with the info at the June meeting.

BAMFORD INFORMATION NEEDED

Barry Dussinger, of the Landisville Historical Society is seeking postcards, photos and any information on this little crossroad hamlet east of Landisville. Contact him or Jim Ward.

STRASBURG HISTORICAL SOCIETY

Although they also meet on the third Monday of the month, this active group has asked us if any LCPC member would like to make a postcard presentation before their group. If you wish to help you may contact Harriet Miller, 687-7345 or Jim Ward, 6264660.

FAR EAST INN INFORMATION

It was a dog kennel in the 1930's and a restaurant in the '50's. Jo Ann Kerst would like a colorized postcard or photo of The Far East Inn which was just east of Columbia. Her phone is 392-4797.

WANT ADS

PMC (Private Mailing Cards) by United Fruit Company. Charlie Griffiths 872-5043. Birthday Greetings (unused and inexpensive). Sandra Shaub 786-4344. Lanc. City and County trade/adv. cards. Will trade my Lititz pc's. Jim Ward 626-4660. Flatiron Bldg. showing pigs on roof eating pretzels. J.Ward. See how easily your ad would be seen right here? It's free!

EXPOSE ON LANCASTER FIRE HOUSES

At the August meeting Jim Ward will 'start at the beginning' and explain to the Lancaster County Postcard Club what has happened recently concerning the scarce Lancaster Fire Engine/House postcards.

