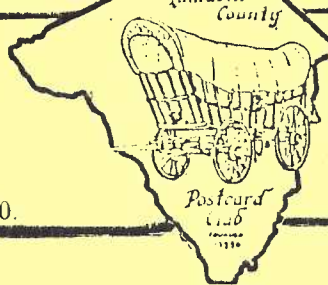


YOU ARE INVITED TO JOIN THE NEW Lancaster County Post Card Club

MEETINGS - THIRD MONDAY EACH MONTH

1821 Municipal Drive, Lancaster, PA

Manheim Twp. Municipal Bldg., Rt. 272 half mile north of Rt. 30.



LCPC NEWSLETTER

September 1990

Vol. 1 No. 8

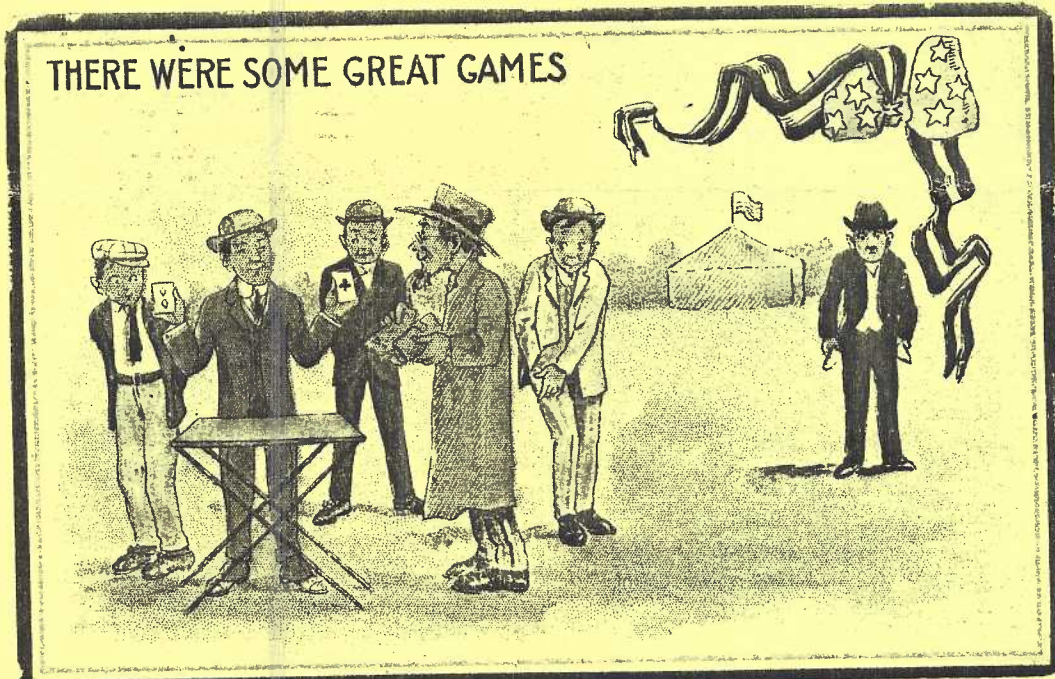
Next Meeting-

Mon., Sept. 17, 1990 7 pm

Dear fellow members and future members,

SEPTEMBER PROGRAM - LCPC'S SECOND BIG AUCTION

This month's Newsletter contains a two-page insert - your personal copy of our second big postcard auction. There are lots of local cards, many, many nice holiday cards, and individual scarce topicals - something for everyone! See you Sept. 17! We can use a third clerk - in addition to regulars Shirley Neidermyer and Charlie Griffiths. Also a couple of runners. Merv Wenger will be this month's auctioneer.



A reminder - County Fairs can be lots of fun, but stick to bingo!

CLUB REIMBURSES PROGRAM COSTS

After a thorough discussion, the LCPC voted to reimburse the cost to members for their programs, providing a written description of the program accompany the slides (or whatever medium was used).

Costs have run far less than the maximum \$25 per program voted by the membership. Up until now there have been from 20 to 45 slides each program at about 35¢ per slide.

This decision allows the Club to reuse the program at future meetings as well as provide material for use before retirement homes, service groups or any where we may be asked to talk about postcards. We have been approached so far by a Landisville and a Strasburg association.

The Club's next need would be a slide projector and screen (at least 48"x48"). Donations or inexpensive purchases will be considered.

ALBUMS OF IDEAS

So many of the Lancaster County Postcard Club's members are 'green horns' and they wish very much to see what other members collect. If you have a small collection you'd like to share, bring it to a meeting.

This way the new members will get ideas for starting a collection and advanced collectors may be able to help add to the collection. This is really what we're all about!

Please, BE CAREFUL IN HANDLING SOMEONE ELSE'S CARDS. And owners, be sure your collection has been housed in sturdy pages and binders. Let the Pres. know what you've brought, so an announcement can be made.

CORRECTION

August's Newsletter had two captions reversed: those above the Amish in Center Square. Where were the 'eagle eyes'? No one saw the error. Vacation time??

AUGUST BOARD WINNERS

"VACATIONS AND TRIPS" were the themes for August Exhibit Boards. Anne Steinberg's magnificent bears were first place winners under the title 'Gone Fishing'. Don Davis' 'Life's A Beach' and Earl Carver's 'Seashore Experiences' took second and third place. Thanks to all for the effort.



NEW MEMBERS

We welcome these new members to the LCPC-
#69 BARB MOWRER - Columbia, Marietta, Maytown, Easter, chickens, Halloween, Christmas, Santas, greetings.

#70 WALTER MOWRER - ditto Barb's list.

#71 MORRIS GREINER - Mt. Gretna, Bis-

I MAY BE A BIT OF A DUNCE, BUT
I KNOWS THE REAL VALUE OF
BOOKS BETTER THAN SOME!



September's theme is CHILDREN. October, November and December are these typical topicals: HALLOWEEN, THANKSGIVING and CHRISTMAS. Join the fun! While the Treasury's able, we'll keep offering prizes of \$3, \$2 and \$1.

And an additional "THANKS" to Earl Carver for his continuing Album of Exhibits. Earl has taken photos of all exhibits thus far produced!!

mark(Quentin) and Cornwall.

#72 JOSEPH LOCCISANO - Businesses, esp. interiors, cigars, amusements.

#73 HARRY DEIBLER - Ephrata, small local towns

#74 JUNE DEIBLER - Space, autos, Disney.

#75 CARL CAMPBELL - Local scenes.

WHAT DO YOU THINK? Two different types were used in this month's Newsletter composition. Which do you find easier to read? ? This type and that used in the "expedition" article is ELITE. Much of the rest of the Newsletter is COURIER. Do you like a 2-column page or one?

Correspondence address: P.O.Box 300, Lititz, Pa., 17543-0300. (Same address for President Jim Ward, phone 717,626-4660). Other elected officers: Elizabeth Graver, Secretary, Charles Griffiths, Treasurer. Appointed offices- Directors: Earl Carver, Don Davis and Dan Good. Publicity: Shirley Neidermyer. Mailing: Peg Hanna and Helen Hellinger. Membership: Earl Carver. Historian: John Long. Exhibit Boards: Dede Schaeffer. Librarian: Alice Goddard. Greeter: Mary Darrenkamp. Auctioneer: Gordon McKinzie. 50/50 Chairman. Harry Lines. Newsletter: Jim Ward.

UNAUTHORIZED EXPEDITION

Hans Graaf settled in eastern Lancaster County about 1717 having purchased 5,000 acres from the Penn's. This well-educated, enterprising Swiss refugee was so well-liked by the other settlers who became his neighbors that they named the newly organized township (1729) "Earl" (which is English for Graaf or Groff).

Population increase soon called for two political subdivisions-East and West Earl, and so it was into this region that the Griffiths and Ward Expedition wandered on Sept. 6, '90.

Initially, these stalwart explorers were expecting to meet resistance from local natives, but they soon found a few friendly homesteaders who helped them locate the long-gone Camp Volunteer and the remains of the Great Fire - both found only in the historical records of Terre Hill and on their Expedition's pictorial postcards.

The ancient Black Horse hotel at Hinkletown and the blacksmith shop at Martindale were easily located by the two detectives.

With advancing age a factor, however, they hope to enlist several younger deltiologists to learn the wiles and wherefores of back-country Lancaster County so this intrepid goal of 'spotting all existing cards' can be accomplished before the end of the century.



Boarding House at Camp Volunteer, Terre Hill, Pa. Published for the benefit of the "Bethel Home for Girls," Lancaster, Pa.

DIRECTORS MEET

The LCPC Board of Directors met Aug. 22 and considered the following items (some of which will be discussed at the September meeting)-

- 1) Stress the need to reannounce and re-emphasize the selling of cards at meetings.
- 2) Suggest adding 3 more Directors, lengthen term to 2 years, so half the Board would be newly elected each year.
- 3) Possible loss of meeting site.
- 4) Contribution to Manheim Twp. Supervisors for use of room since April 1990.
- 5) Necessity for bank account.
- 6) Alternative to cash awards for Exhibit Boards at monthly meetings.
- 7) Purchase of books for Library (with funds donated esp. for Library).
- 8) Incorporation: advantage, cost, etc.
- 9) Exhibit cases, stands for Show use.
- 10) Budget.
- 11) Issuance of postcard by LCPC in its first year. Winter theme for Christmas use?
- 12) Schedule of programs for remainder of 1990.

As a voting member, you have every right, in fact-an obligation, to consider and offer suggestions and comments on all of the topics listed (and any others you have in mind). We will discuss these at the Sept. meeting. If you can't be there, send us your comments by mail.

CLUB'S FIRST POSTCARD?

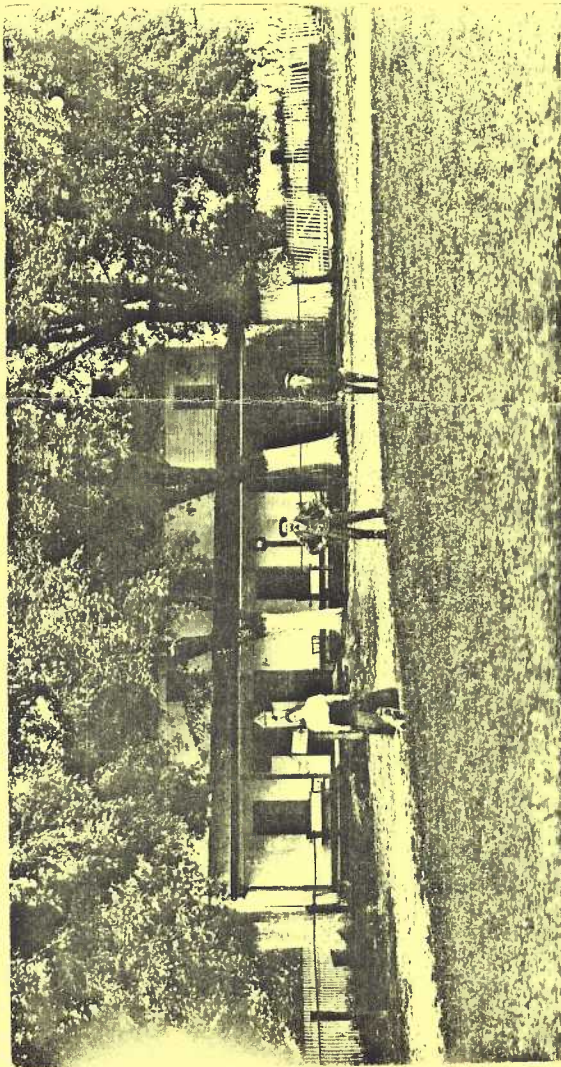
One of the Directors' topics was the possibility of the LCPC issuing a full-color postcard that could be used by members, families, friends and anyone for sending during the coming Holidays.

If you have a nice WINTER scene from Lancaster County that you think might be a good subject for a postcard, bring it to the next meeting. Although the membership has yet to vote to issue a Christmas Postcard, seeing possibilities and talking about subjects are a first step.

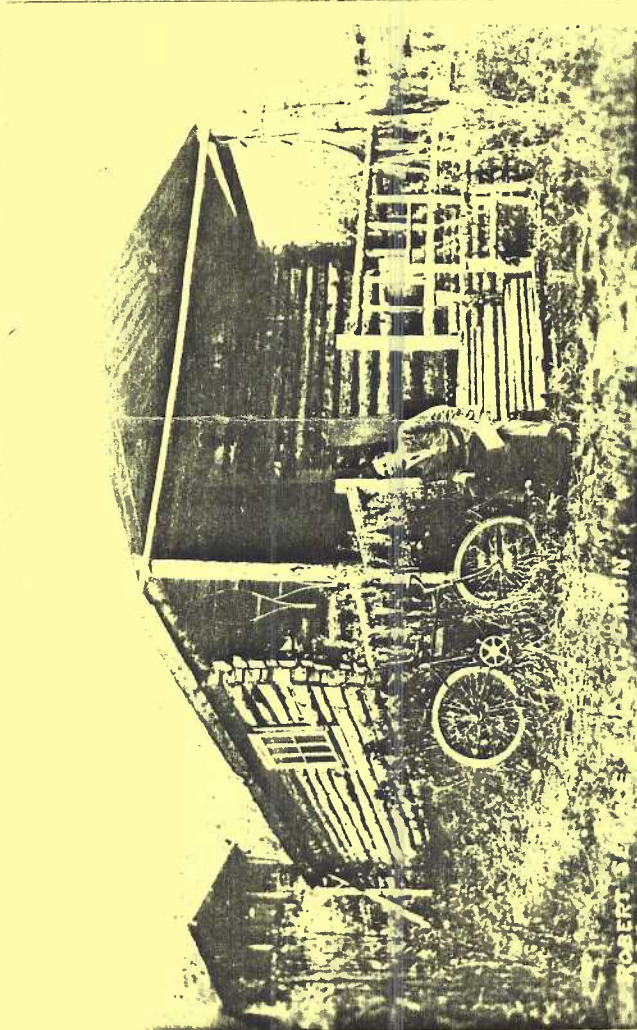
As some of you know, York Postcard Club has issued a series of four cards during 1990. Their themes have centered around York and its history. Cost of producing a card is not prohibitive and they have been quite successful in sales according to the report at their August meeting.

ROCKY SPRINGS CHECK-LIST

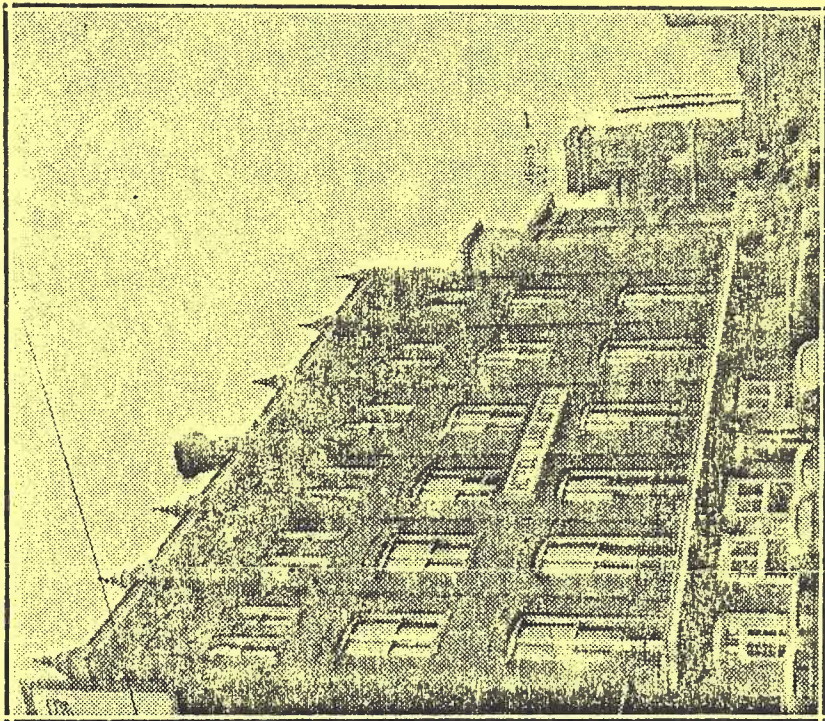
FREE lists were given out at the August meeting. Charlie Griffiths is the man who did the work. Have you thanked him for his efforts?



Gerald Hostetter, member #6, would like information about this postcard. It has cancellations of Ephrata and New Holland (9/8/06). It could be a hotel or very large residence. It's a real photo card.



From member #55, Bert Brandreth of Royersford, comes this real photo, white border postcard. Unused, it was published by the Gowen, Sutton Co., Ltd., Vancouver, B.C. You can relay your information through regular-attende, Earl Carver, who corresponds with Bert.



HOTEL LANCASTER

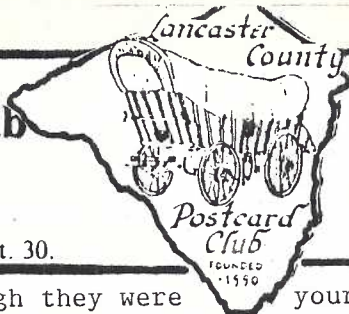
From an article in a 1938 Lanc. County Hist. Society book comes this excerpt: "...Hotel Lancaster was a large, well-built brick building of four stories erected 60 years ago (1879)....Personally it has been my pleasure to live and occupy a brick building, No 38 East Chestnut St., across the way from Hotel Lancaster, since 1891, and am now the oldest living occupant in business on the four-sided city block." David Bachman Landis. The old railroad station (on many postcards) was next to the hotel, to the west.

YOU ARE INVITED TO JOIN THE NEW Lancaster County Post Card Club

MEETINGS - THIRD MONDAY EACH MONTH

1821 Municipal Drive, Lancaster, PA

Manheim Twp. Municipal Bldg., Rt. 272 half mile north of Rt. 30.



AUCTION #2 - following
business and program
of Sept. 17, 1990
LCPC Meeting.

NOTE: PLEASE HANDLE CARDS CAREFULLY - as though they were your own. Perhaps they will be.
un=unused, u=used, cntl=continental, rp=real photo (6)= six cards in lot. pc=postcard

- 1 Birthday (9)
- 2 Easter (9)
- 3 Valentines (11)
- 4 Christmas (12)
- 5 Easter (12)
- 6 Easter(2) Valentine(1) Thanksgiving (1)
- 7 Santas (2) Christmas (1) Thanksgiving(Clapsaddle)(1)
- 8 Silk Easter(2) St.Pat.(1) Tuck Easter(1)
- 9 Santas (4)
- 10 G.Washington(2) Thanksgiving (Clapsaddle?)(2)
- 11 Princess Elizabeth (3) Prince of Wales(Geo VI)(1) un
- 12 European Royalty(1=u,3=un)
- 13 Coins(Gt.Br.,Austria,Mex.)Stamps(Mex) 3=un
- 14 Suffragettes(Dunston-Weiler #2,4,5)+Wash.D.C.=u
- 15 Artist-signed girls(3)+ Dillsburg Millinery girl 1=un
- 16 Artist-signed girls(2 clr,2 b/w)1=u
- 17 Sun Bonnet (set of 7)all mailed to same girl
- 18 Dragon (4-part Huld installment)3=u
- 19 Days of the Week with clocks (set of 7) 6=un
- 20 Lord's Prayer(set of 8) un
- 21 Presidentials (Taft/Sherman)(McKinley) un
- 22 San Francisco earthquake (2=un)
- 23 Adv: Lipton tea, American Harvest Machines un
- 24 Expositions: 1915 Pan-Pacific 2=u
- 25 Petition pc to Pres. Wilson; "Oppose war"(1915) un
- 26 Dentention Room on Ellis Island u
- 27 Local "dead" post offices (8) u
- 28 Same - but different (8) u
- 29 Motels,etc. (9=un)
- 30 Sheep (28)
- 31 Folders: Pa.,N.Y.,N.H.,other states (19)
- 32 "Egyptian Gods" (set of 6) Br.Museum w/descriptive text,orig.envelope
- 33 Cigarette silks: Indians by Tokio Cigareetes (8) not pcs
- 34 Ephrata pcs (11) by Jay McVey cntl,un
- 35 Tuck #1 card: "Tower of London and Beefeater" u
- 36 "The Phonograph" u,fine
- 37 Billiken series A6 un,fine
- 38 Billiken, series 3,u,fine
- 39 "Billycan..Billycan't" unusual , u,fine
- 40 Local scenes, fair conditon (5)
- 41 Arcade cards: Western stars on playing cards (11)un
- 42 Arcades:Hollywood stars "then and now" (6)un
- 43 Arcades:Misc.,mostly humorous (7)un
- 44 Arcades(recent): Shirley Temple (8)un
- 45 Pa. Turnpike (11 + folder) 10=un
- 46 Song Birds (38) un,cntl
- 47 Owls,Eagles,etc. (22) un,cntl
- 48 Amish (some dups) (24) un,cntl
- 49 Royalty and entertainers (9) un,cntl
- 50 Album:Cupids on pcs (100) u,un

REMEMBER

Visa, Master Card, gold cards, orange cards, purple cards, cards of many colors, personal checks, bank cashier checks, USPS money orders or anything else legitimate are all un-acceptable. CASH ONLY. No charges, no holds. You may borrow if you're lucky!

- 51 Harrison Fisher (set of 6) "The Marriage"etc. (titles trimmed)
- 52 Adv: M.M King of Motorcycles, u,fair cond.
- 53 Adv: assorted,some local (10) u,un
- 54 Adv: assorteted, some local (10) u,un
- 55 Shoebox of approx. 600 pc's,all eras,all types
- 56 Lilies of the valley (36)
- 57 Roses (44)
- 58 Scotch thistles (6)
- 59 Objects made from flowers (7)
- 60 Violets,foget-me-nots,bluets (28)
- 61 Flowers with 'sayings' (8)
- 62 Misc. flowers (51)
- 63 More of above (51)
- 64 Horse shoes (18)
- 65 More "good luck" cards (10)
- 66 Lititz Scenes (14)
- 67 Lancaster scenes (nice group,as above) (14)
- 68 Rawlinsville(1) E-town(1) Leacock(1) New Providence(2) Willow Street(1)
- 69 Lancaster (incl. Rockey Springs)(14) Smithville(1)
- 70 Railroads(2) Horse-drawn rp (1)
- 71 Comics (45)
- 72 Lovers (8)
- 73 Mt. Gretna (15)
- 74 Columbia (11 incl 2 rp parade)
- 75 E-town (2) + McCall's Ferry (3-section fold-out)
- 76 Landisville (3)
- 77 Lititz (3), Millway(1), Stevens(1)
- 78 Marietta (5), Shock's Mills(1) York Furnace Park(1)
- 79 Millersville (3 incl miniature fold-out)
- 80 Strasburg (2), Quarryville (2)
- 81 Easter peeps(21)
- 82 Easter peeps (38)
- 83 Easter peeps (26)
- 84 Easter chickens(29)
- 85 Easter rabbits (23)
- 86 Same,but different (23)
- 87 Easter crosses (9)
- 88 Easter children (31)
- 89 Easter children (20)
- 90 Negroes (9)
- 91 Lancaster multi-views (2)
- 92 Lanc. greetings(3)+ birds-eye view
- 93 Lanc. square (4 incl. brown-framed)
- 94 DBL: covered bridges(2)un
- 95 DBL:churches (2)un
- 96 DBL: mills (3) 2 un
- 97 DBL:covered wagon (3 diff. captions) un
- 98 DBL:cemeteries(2),Rockey Springs,Rockford un
- 99 DBL:western Lanc. city (5) 4 un
- 100 DBL:Cloisters,Colemanville,puppies un
- 101 DBL:Landisville churches(4) 3 un
- 102 DBL:misc. scenes-'starter'set of 9 un
- 103 DBL: scenes- (6) some dups, un
- 104 Lanc.: schools (6)
- 105 Lanc.: F&M incl. brown-frame (7)
- 106 Lanc.:stores,bank interiors (3)
- 107 Lanc.:Wheatland (8 diff.)
- 108 Lanc.:monuments,cemeteries (4)
- 109 Lanc.: Conestoga River,bridges (4)
- 110 Mixture: about 300 pcs,many dups,some Europe cont1