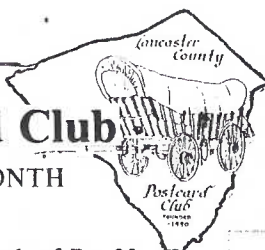


# YOU ARE INVITED TO JOIN THE Lancaster County Post Card Club

MEETINGS - THIRD MONDAY EACH MONTH

1821 Municipal Drive, Lancaster, PA

Manheim Twp. Municipal Bldg., Rt. 272 half mile north of Rt. 30.



LCPC NEWSLETTER

February 1991

Vol. 2 No. 2

Next Meeting

Monday 7 pm

Feb. 18, 1991

## PROGRAM

Participants in MY HOMETOWN (January's Program topic) had as much fun as those of us who listened. They all talked rapidly (to stay within the 60-second time frame) but here are the highlights we were able to glean from each:

**HELEN HELLINGER** - she was the first baby born in the Columbia hospital and they were so excited they spelled Melissa wrong  
**MERV WENGER** - found a great pc of Samuel Hamaker (Manheim) with a beard 6'1" long in a box of 'junk' postcards

**HARRY LINES** - a real photo pc of the house where he was born (with him and his parents on the front porch in Conestoga, Pa)  
**PEG HANNA** - the Keystone Underwear Mill in Lititz where she worked a summer and kept breaking needles sewing trouser flies.

**HOWARD STEINBERG** - a scarce winter scene with horsedrawn sleigh and barber pole. He read in newspaper the bdlg. burned in 1923.

**JIM RUDISILL** - his home, formerly Jerusalem school house (York County), where a funeral was held in his living rm. because the U.B. Church (next door) burned down.

**DORATHY FRY** - in charge of many Ephrata pc publications, she was 'blessed' with continual errors like "Luthern" misspelled.

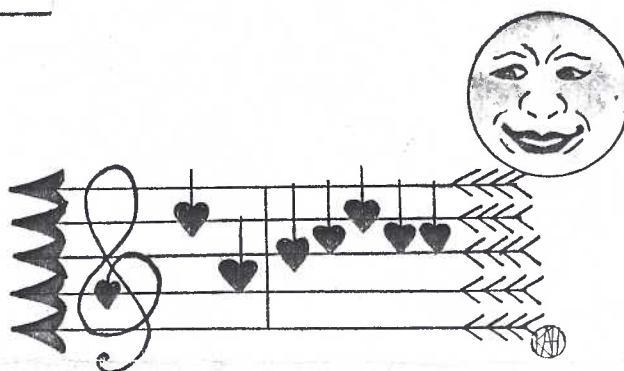
**MARTHA STONER** - the postcard that started her collecting - of beautiful Switzerland. And she still collects Switzerland.

**MARY DARRENKAMP** - a real photo pc of the covered bridge she walked through on her way to school in Manor Twp.

**HAROLD MOYER** - the pc that started him collecting: the Blainsport Lutheran church sent to his grandmother and found in a box

**LEE FRY** - a real photo pc of Stauffers of Kissel Hill - where they started business. (Kissel means 'slippery' or 'humdinger' according to Dorathy Fry.)

**JIM WARD** - a real photo showing a bar room with "Leopard Hotel" on the register. It became the Weber Hotel (Lanc.) in 1906.



Love Me And The  
World Is Mine.

Copyrighted 1908 by Coppinger and Griel, Lancaster, Pa.

## THE LITTLE ART SHOP or A TALE OF THREE LADIES

With more cards than information, this month's speaker will tempt you into bringing what you know about the subject to the February meeting.

The locally published and locally created cards were hand-drawn and hand-painted by a trio of three inspirational ladies: Katherine Griel, Katherine Huber and Alice Malone. And a fourth name is prominent: COPPINGER. Who? or What?

What you can add will help round out the slide presentation of Little Art Shop postcards given by Jim Ward. The ladies in question were living in 1909-1912 and their oft-times whimsical drawings are a unique Lancaster phenomenon. Bring your own pc's but especially bring your information to share.

A check-list of known LAS postcards is available at the meeting.

## WOLVERINE PC CLUB - DOLLS

If dolls are your interest, read our copy of The Wolverine Postcard Club News. Lots of other tidbits, too, in their quarterly publication.

This and the monthly newsletters from Susquehanna Valley, York and Webfooters Post Card Club can be found on the Greeter's table at the meetings.

# MEMBER #19 HAS WEEKLY RADIO PROGRAM

Recognized by his mellifluous voice our fellow member has been reading the Lititz Record Express to a captive audience each Friday for several years. He's first to admit 'you don't have to be from Lititz to enjoy their newspaper'.

And his trademark has been 'the corniest joke I can think of' just before he signs off his hour-long stint. You must have guessed by now, it's Don Davis. And now you know we get to hear ~~the~~ corniest joke of the month at our pc meetings!

Don's been offering this gratis job to the Lancaster County Assoc. for the Blind/Sight Saving Center on their Radio Talking Library. He records news articles, letters to the editor and weekly columns at the Center on Thursdays. His program is broadcast at 3 pm and 8:30 pm every Friday on special radio receivers distributed by the Blind association.

(The above was excerpted from the Jan. 31, 1991 issue of the Record Express.)

Thanks, Don, for your efforts. We're proud of you!



PC - Ernest Nister, London, series 1289

# EXHIBIT WINNERS

They keep getting better and better! In January, nine terrific exhibit boards were displayed and Exhibit Chairlady Sandy Shaub asked the exhibitors to talk briefly about their Hometowns (the topic). Some of what we heard follows:

**MY TOWN - COLUMBIA** Charlie Heim-First Place 31 of 32 very scarce pc's by Zeamer (local druggist/pub) on an oversize giant board.

**MILLERSVILLE - MY HOMETOWN** Harry Lines-Second Place where he grew up incl. a r.p. pc of him on porch with parents!

**LITITZ** Lee Fry - Third Place Two boards on very scarce real photo views

**MARLETTA - GEM OF THE SUSQUEHANNA** Earl Carver his Dad probably marched through the 'Welcome Home' WWI arches.

**QUARRYVILLE-** Anne Steinberg real photos incl. grandfather's butcher shop built over a stream!

**GUANICA, PUERTO RICO** - Jose Rodriguez father and grandfather on r.p. card plus site of flag raised when 1898 US troops landed.

**GROWING UP IN LITITZ** - Peg Hanna Fond recollections of her childhood days,

**HATFIELD (PA.)** - Don Davis Grandfather was postmaster; population never increased over 1900 people. (He can tell you why.)

**EAST SIDE, WEST SIDE (LANCASTER)** - Jim Ward Scarce real photos of his first hometown.

Postcard Awards will be presented at the next meeting.

Also, a request has been made for standardized rules in print so we are all more knowledgeable about what to do and how to vote on exhibits.

# EXHIBIT THEME



## FOR LOVERS ONLY

February's Exhibit Board topic will be Valentine Postcards. Fancy, beautiful, cute and funny are all welcomed! And yes, even the kind you hoped you'd never get.

The 'board' displays are really catching on - and becoming a highlight of our meetings. Join with those of us who have the most fun (making up the boards). Call 626-4660 if you need material. Poster boards are only 50¢. Peelable corners \$3.25 for 250 (enough to last for 10 boards).





**Daniel Kreider Good**  
1916 - 1991

Many of us knew Dan was battling cancer for nearly three years. We will all miss his friendly laugh and his zest for postcards. I'd like to share an incident that I feel best portrays Dan in the years I knew him.

Brimfield, Mass. has a week-long Antique and Flea Market that makes the local "extravaganzas" look like pikers. In recent years the little town of Brimfield, in order to better control traffic, instituted new rules for its 'selling fields'. On this particular trip the Postcard Field (dominated by two huge converted chicken houses and packed with postcard dealers) was to open at 6 p.m.

Dozens of would-be buyers were braving the chill of a spring Massachusetts evening, up tight against the entrance rope. When the minute came and the rope dropped, there was a mad dash across the muddled field.

Any of you might have been right out in the front of the 'pack' except that looking over your shoulder you'd have seen Dan doing his best to keep up in the twilight, side-stepping mud with his walker and going as fast as he could.

And you'd have had to drop back - like I did - and kept his pace. For here (except for God's will) any of us might have been.

Or would we? Would we have had the will to drive on like Dan did? (JFW)

Silhouette by Jim Rudisill (#66) Dec. '89.

#### DAN GOOD'S POSTCARD STAND REMAINS OPEN

Dan's request was to have his manager of many years, Nancy Gambler, continue to run his stand at Barr's Antique World.

Surplus cards that have been in storage will be brought in to the stand on a regular basis. Hours will continue as in the past: Sat. 10 to 5; Sun. 8 to 5. Used postcard albums and pages by the hundreds!

Lancaster County Postcard Club dues are \$7 per person, \$10 per family. Mail to: Treasurer Howard Steinberg, 645 Robert Fulton Hwy. Quarryville Pa., 17566. Other elected officers are: President Earl Carver (684-3069), Vice President Sandra Shaub, Secretary Shirley Neidermyer, Directors: Don Davis, Dorathy Fry, Jere Greider, Jerry Kotek, Walter Mowrer.

#### EDISON AT YORK

Joan Lehman (#68) collects postcards dealing with Thomas Edison, his inventions, home and laboratory.

Her Feb. slide show in York was extra fine! She welcomes anything you might find but admits the pc of phonograph with the smiling man's ear to the morning glory horn is quite common (unless it has an advertisement on the reverse).

She just learned about Edisonville in Lancaster County. Did you know one man's mill - in Edisonville - one time provided all the electricity for Strasburg? And there are at least four postcards of Edisonville?



PC - Gartner & Bender, Chicago

Permanent Committee Chairmen: Auction Walter Mowrer, Exhibit Boards Sandra Shaub, 50-50 Harry Lines, Greeter Mary Darrenkamp, Historian John Long, Library Anne Steinberg, Membership Dorathy Fry, Publicity Lorraine Singer, Newsletter Editor Jim Ward (626-4660) Newsletter and club correspondence: P.O. Box 300, Lititz, Pa., 17543-0300.

# AUCTIONS



Prices realized from January Auction.

First number = Lot. Second number = Price.

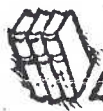
1 .50	25 2	49 6	73 1
2 25	26 3	50 4	74 2
3 11	27 1	51 2	75 4
4 5	28 1	52 10	76 6
5 .50	29 1	53 1	77 7
6 1	30 1	54 3	78 5
7 4	31 8	55 .75	79 7
8 7	32 9	56 1	80 26
9 2	33 8	57 4	81 13
10 4	34 2.50	58 1	82 9
11 12	35 4.50	59 1.50	83 7
12 10	36 1	60 3	84 5
13 1	37 .50	61 7	85 6
14 3	38 1	62 22	86 nb
15 7	39 .50	63 7	87 .50
16 7	40 .50	64 2	88 14
17 15	41 1	65 1	89 9
18 10	42 1	66 4	90 1
19 11	43 5	67 5	91 3
20 32.50	44 5	68 9	92 9
21 9	45 5	69 14	93 8
22 32.50	46 2	70 2	
23 7	47 8	71 1	
24 .50	48 4	72 1	

Paid to members \$497.47

Commision to LCPC 55.28

Gross receipts \$552.75

Thanks to Walt Mowrer, Auction chairman, and his staff: Shirley Neidermyer, Howard and Anne Steinberg and auctioneer Darwin Rodgers. Next auction is scheduled for Apr. Lots must be in hands of Walt or Jim Ward by the March meeting or no later than 3/25



## LIBRARY



Sandra Shaub is this month's donor to the Club Library. She voraciously devoured (in less than a week) the new book she just purchased "Philadelphia in Picture Postcards, 1900- 1930" and immediately turned it over to us! (Sandy appears to be our most avid library reader - according to the check-out cards.) THANK YOU, SANDY!

A unique donation came from Joan Lehman of Dover. Joan is the York PC Club's librarian and has kept a very fine 'notebook' of articles pertaining to that club as well as pc articles in general. She duplicated just such articles from old Hobbies magazines and kindly made us a notebook to which we can add similar material. We thank her very much for her thoughtfulness.



Earl: "I'm worried."

Helen: "Why?"

Earl: "I put a Valentine card and my income tax return into the same mail."

I can't remember which one I signed "Guess Who?"

A bit of craft and humor from Pres.Carver (Helen is Mrs.Earl.) The editor's ECC file already contains 14 clever pc's. Any other members make their own??

PHILATELIC SOCIETY OF LANCASTER COUNTY(the stamp club)meets 2nd Wed. of each month at Stauffer Mansion,1241 Lititz Pk. All are invited. Which came first - the stamp or the postcard???

## LIFE MEMBERSHIP

President Earl Carver surprised last year's president Jim Ward when he made a presentation to Jim. It read "Certificate of Appreciation and Honorary Life Membership in recognition of outstanding service as the first President of the Lancaster County Post Card Club -1990" It was dated January 14,1991 and signed by Earl and Secretary Shirley Neidermyer.

Earl explained that it was the result of a committee which sought to recognize Jim who was instrumental in founding LCPC.

After calculating what the award was worth in paid yearly membership, Jim promised not to bankrupt the Club by exceeding the normal life expectancy rate.

## MORE GIFTS AND CAKE, TOO!

Not expecting the award, Jim had with him for free distribution to the members, a 4"x21" postcard replica of Center Square Lancaster (about 1910). He had also given one to each of the 21 members at the organizational meeting in Jan. 1990.

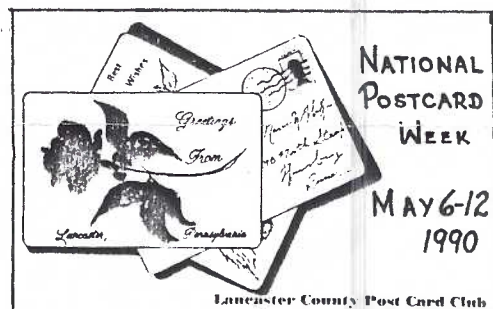
Anne and Howard Steinberg (along with Jim)also surprised the Club with a calorie packed cake for our FIRST BIRTHDAY. There were gigantic pieces for all (enough to carry us from the last of the Christmas cookies to Fasnacht Day!! ed.note I bet Stan Hopkins (#64) from Canada doesn't know what a fasnacht is!!



**NATIONAL POSTCARD WEEK MAY 5-11**

It seems a long way off, but your sketch or idea for our club NPW postcard is due in Don Davis's hands this month! This gives us time to vote for one and have it printed for circulation.

We can promote our hobby all year long by contacting our local papers. Recently Lititz Record Express asked for old pc's to picture in their column 'Out of the Past'. Just be certain the paper knows how you value your cards and arrange for them to do the photography and get them back to you in a day or two.



Bob Roop's 1990 winning entry.

## CLASSIFIED ADS

### HOW CAN I GET A HEAD??

...Don Davis screams to all corners of the world. Don has 3 parts of the Franz Hultz installment set of Uncle Sam. Please call Don at 872-8630 if you can help him with the missing 'topper'. He'll perform the surgery. If you don't complete it by July 4th, Don, you can always show Uncle Sam as an ostrich with his head in the sand.

**BRING YOUR UNWANTED HERSHEY** pc's to the Jan meeting for me to look at. Russell Mull #79 **CHECK MY TABLE:** local views, adv(trade)cards; topical pc's; discount pc supplies. Jim Ward.

**COCA COLA WANTED** Postcards, photos showing bottling plants, coolers, dispensers, signs, trucks, etc. Also, any other items used to advertise Coca Cola or other soft drinks. Jere Greider, 3724 Kennel Ave., Columbia, Pa. 17512. Phone 717-285-5872.

**POSTCARD MAIL AUCTIONS** (John H. McClintock, #25) I have issued illustrated mail auction sales since 1968. If you would like to receive the next one, send a 52¢ stamped/ addressed return envelope to: Virginia Mail Auction, P.O. Box 1765, Manassas, Va., 22110. (Ed. note: mention LCPC, so John knows these ads really work! Thanks)

### IRELAND - A Comic Map.



PC - Ormiston & Glass, London



PC - International Art

## DUES



### DID YOU FORGET SOMETHING?

These members have not paid 1991 dues (2/1 writing) and we'd like them to stay with us. \$7 per member, \$10 per family. It entitles you to an informative monthly Newsletter, the privilege of selling at our quarterly auctions and most of all enjoying the companionship of fellow postcard collectors, their exhibit boards and their monthly postcard program presentations. Oh yes - and 30-day use of any of our 29 Library reference books on pc collecting!

#33 Sylvia Hilbert	#56 Dee Miller
#60 Jane Shull	#57 Randy Miller
#42 Alice Goddard	#65 Donald Brown
#45 Chris Landis	#67 Gary Hawbaker
	#72 Jos. Loccisano

107 out of 116 is a great show of confidence in your Club. Our apologies to these nine if they've since sent in their dues. Treasurer's address on page 3.

### LOOK WHO HAS A RED FACE!

When the winning number was drawn at the Jan. meeting we all thought Howard S. ran to the vestibule for his ticket in his coat pocket. Why did it take so long? HS had tossed his winning ticket along with pocket trash into the basket in the mens room! (It could have been worse!)



PC - Ullman Mfg. Co., N.Y., series 1587

## FUTURE SHOWS



Feb. 8-9 N.J., Mt. Laurel Postcard Society Show. Budget Motor Lodge, Rt. #73 (exit #4 off NJ tnpk). Fri 10-7, Sat. 10-4. Free adm. John McClintock, Box 1765, Manassas, Va., 22110.

Mar. 9 Pa., York Historic York Book & Paper Fair. Old Main Bldg., York Fair Grounds. Sat. 10-5. \$3 adm.

Mar. 29-30 Pa., Lancaster Morlatton Postcard Spring Show. Willow Valley Resort Conference Center, Rt. 222 s. Fri. 10-7, Sat. 10-5. \$1 adm. Anne Darrah ph 215-582-4810

*"THE NATIONAL GAME"*

"Cupid at the Bat"

"I'm on to your curves"

SERIES 809

PC - AMP Co. (Greenfield Chocolate adv. rev.)

## NEW MEMBERS

#116 WELCOME ABOARD NEW MEMBER!  
**KERMIT ZIMMERMAN** collects stamps-wishes to join us anyhow! 733-3255

100's of St. Patrick and Easter pc's at my table (25¢ to 75¢) Discount supplies. Jim Ward