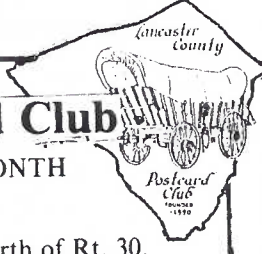


# YOU ARE INVITED TO JOIN THE Lancaster County Post Card Club

MEETINGS - THIRD MONDAY EACH MONTH

1821 Municipal Drive, Lancaster, PA

Manheim Twp. Municipal Bldg., Rt. 272 half mile north of Rt. 30.



## LCPC NEWSLETTER

March 1991

Vol.2 No.3

NEXT MEETING -

Monday 7 pm

March 18, 1991

Member bourse 6 pm

## PROGRAM

The humor is timeless so why can't we still enjoy Valentines in March? **Don Davis** will entertain us in his own inimitable way, with his tart, biting, acidic **Vinegar Valentines** (the kind you hoped you'd never get - and if you did you weren't dumb enough to tell anyone else).

Most of the Penny Awfuls were the large 8x10" cheap paper variety, but if you saw Don's February exhibit, you had a preview of what also occurred on postcards!

Several publisher's vied for the 'most cutting cards' award (including the House of Tuck). After viewing these madcap mis-sils of mayhem, you decide which were worse. And Don's always looking for additional evil antics to add to his assortment, so bring your 'unwants' along!



### THE CIGARETTE FIEND

This youngster is sure he's a sport,  
The devilish, dangerous sort.  
If he grows any worse,  
He'll need a new nurse  
For our brains and good sense he is short.



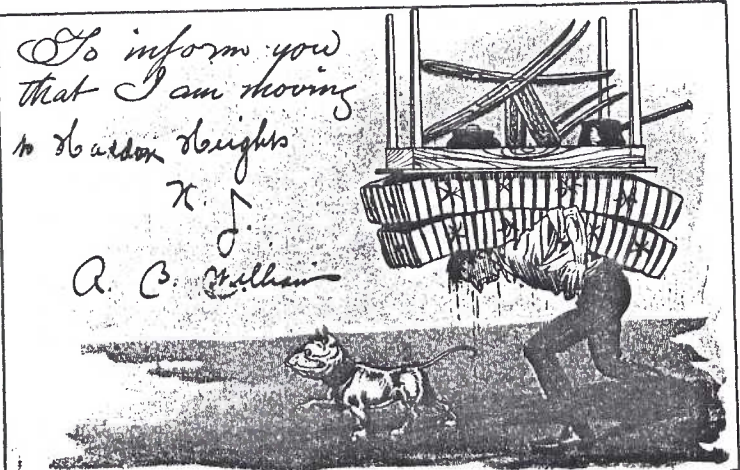
Series of 6. Hand-made on AZO rev. Signed STARR.

## A BARRAGE OF HOLIDAYS

If last month's Newsletter and this one too, seem to convey a hodge-podge of holiday postcards, they do! With delivery of the Newsletters preceding our meetings by ten days sometimes the holidays seem to overlap. This is the 'busy' holiday season = Valentine's Day, Lincoln and Washington's birthdays, St. Patrick's Day, (early) Easter and, of course, April Fool's Day.

And let's not forget Flittin' Day (as illustrated by the accompanying pc). April 1 (and Sept. 1) have customarily been moving days in Pennsylvania-German country because many legal transactions - like leases - often waited until good weather made moving easier. In the case of September - before the cold 'set in'.

If you have an unusual holiday card, the Newsletter welcomes its use. No damage - guaranteed!



# BEGINNER'S BLACKBOARD



Made in Paris. "Soldiers Mail"(Free postage)

## HAND-EMBROIDERED SILK POSTCARDS

"Dear Cousin Jennie....just a few lines that I received your welcomed letter and that I was certainly glad to hear from you all. I am sending you a souvenir postcard and handkerchief from France". From your loving cousin, Melvin. (Co. E 64th Infantry, A E France, Feb. 15,1919.)

And the postcard this thoughtful W.W. I doughboy sent was the embroidered rose with the sentiment 'SENT WITH LOVE' accompanying this article.

This type card - often with patriotic motifs like flags and crests - but more often with sentimental pictures and mottoes answered a need for servicemen to keep in touch with those at home. And for the doughboy with little inclination or time to write it was ideal.

These beautiful postcards of World War I showed up in 1914 in France. For here and to a lesser degree in Belgium and England there was a need for widows and orphans to supplement their income. And with deltiology (now a universal hobby), the embroidered cards with their exceptional quality and uniqueness, fit nicely into parlors where postcard albums took second place only to the family bible.

The motifs were embroidered on long strips of silk which were then turned into the factories and starched, cut, and pasted into the frames. The postcards were then

inserted into thin paper envelopes in which they could be mailed. The one exception (I have) to this, is the card 'To my Mother' and it has a 2¢ stamp cancelled at Trenton, N.J., Oct. 31, 1918, Dix Branch. It's author was stationed at Camp Dix. It appears this was bought in the USA (see caption). It was mailed to Dunkirk, New York.

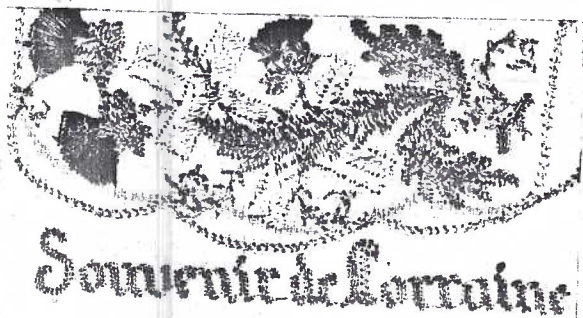


Swiss embroider. Made in U.S.A., Trenton cancel.

These hand-embroidered postcards are still inexpensive (\$3 to \$8) and deserve to be represented in everyone's collection.

Unfortunately these black and white reproductions do no justice to postcards sewn with as many as ten different silk colors!

Information for the above article from PICTURE POSTCARDS by Marian Klamkin, 1974 Dodd, Mead & Co.



French fabricated. Penned "Some Place in France"

## EPHRATA ISSUES POSTCARD BOOKLET

A 'tear-out' book of 32 "old" Ephrata postcards is available at the Ephrata Centennial Committee headquarters in the Ephrata Review bldg., Main Street. A few pcs's are in color incl. a 'new' movie theatre card. The souvenir booklet is \$9 plus tax.

**NATIONAL POSTCARD WEEK****LCPC WILL DISPLAY AT PARK CITY**

To kick off NPC Week (May 5-11, 1991), we will host a display area on Saturday, March 4 from 9 am to 9 pm. Chairman Jere Greider announced at the February meeting. Jere was pleased to say Park City has given our Club free use of an area in the Penny's Mall, just off the center circle for the full day!

**BUT FULL MEMBERSHIP HELP IS NEEDED!**

At the March meeting you are asked to sign up on two sheets: 1) for a three hour shift (4 members in each 3-hour block) or as part of the Set-up or Break-down crews.

2) offer to display an Exhibit Board on a subject of your choosing or one which you displayed at a past meeting. Jere's Committee will then elect those boards which present a good variety of subjects for prospective members

Set-up will be 8 to 9 am. Shifts (of 4 members each) will be: 9-12, 12-3, 3-6, and 6-9. Break-down will be 9-9:30 pm.

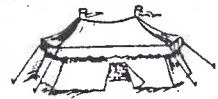
Our complete Club Library will be available for use that day and we will be permitted to sell our Club Covered Bridge postcard, as well as hand out our Club advertisement and take Membership applications!

Here is a chance to promote a hobby you like; to show others how they can find the enjoyment you've found. Sign up!! It won't cost more than a few hours of companionship with people you already know!

Overheard by our star reporter, Eve S. Dropper, at the last meeting- "Why couldn't we have an 'open exhibit night', when a member could display any subject at all?"

And on another occasion- "Having a 'Letters to the Editor' column might add a new slant to our Newsletter".

**These ideas both have merit. Let's!!**

**FUTURE SHOWS**

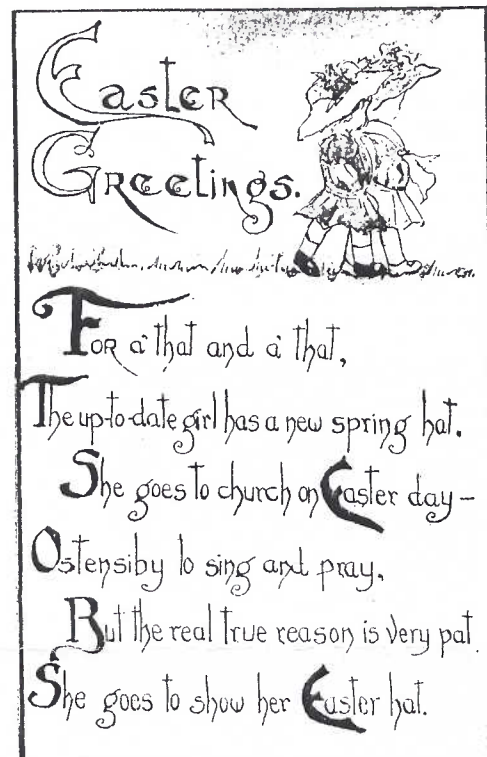
**MORLATTON POST CARD SPRING SHOW** March 29 (Fri) 10 to 7, March 30 (Sat) 10 to 5. With enclosed card admission only 75¢ per day.

Willow Valley Family Resort, Conference Ctr. 2416 Willow Street Pike, Lancaster, Pa, 17602.

**SPRING COLLECTIBLES SHOW** Apr. 6 and 7 (Sat and Sun) Farm & Home Center, Arcadia Rd. off #72, Lancaster. Sponsored by Lancaster Red Rose Coin Club.

**GREAT EASTERN (ALLENTOWN) ADVERTISING AND COLLECTABLES SHOW** April 27 (Sat) 9:30 to 6. Adm. \$4.75 (\$4.50 w/card). Agricultural Hall, 17th & Chew Sts., Allentown Fairgrounds.

**KEYSTONE FEDERATION STAMP SHOW** May 24 and 25 (Fri. 10-6, Sat. 10-5) Free adm. at Zembo Mosque, 2801 N. 3rd St., Harrisburg, Pa., 17110. Sponsored by Key. Fed. of Stamp Clubs.



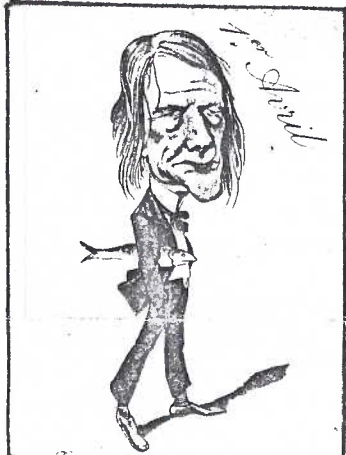
Lancaster County Postcard Club dues: \$7 per person annually, \$10 per family. Mail to: Treasurer Howard Steinberg 645 Robt. Fulton Hwy., Quarryville, Pa., 17566. Other elected officers: Pres. Earl Carver (684-3069), Vice-Pres. Sandra Shaub, Secretary Shirley Neidermyer, Directors: Don Davis, Dorathy Fry, Jere Greider, Rich Kestenbaum, Jerry Kotek, and Walter Mowrer.

Permanent Committee Chairmen: Auction Walter Mowrer, Monthly Exhibits Sandra Shaub, 50/50 Harry Lines, Greeter Mary Darrenkamp, Historian John Long, Librarian Anne Steinberg, Membership Dorathy Fry, Publicity Lorraine Singer, Newsletter Artist Jim Rudisill, Editor Jim Ward (626-4660). Newsletter and general club correspondence address: P.O. Box 300, Lititz, Pa., 17543-0300.

## APRIL FISH

Nature "fools" mankind with sudden weather changes during the vernal equinox. And perhaps April Fools day has its origin in Roman or eastern Indian festivals. But post-card traditions lie elsewhere.

France is generally credited with the development of April Fool's Day. And 99.4% of French April Fools postcards depict a fish!



In 1582 when France (and some\* European countries) adopted the Gregorian calendar, New Years Day was moved from April 1 to January 1, or rather, from Spring to late Winter. The elderly and rural folk were more reluctant to give up the tradition of a new year in the Spring and were referred to as a bunch of 'old fish' and subject to pranks and ridicule.

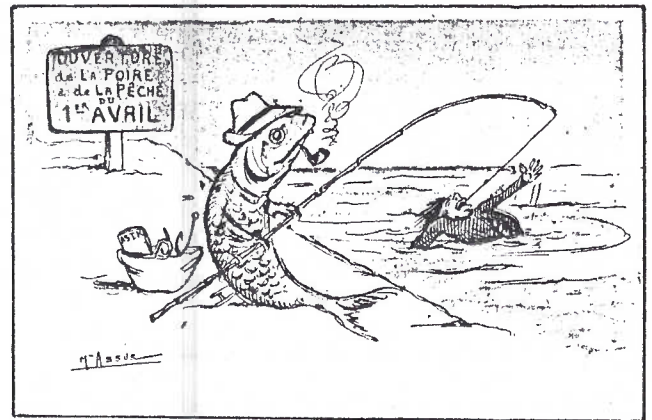


\*also Italy, Spain, Portugal, Luxembourg;  
1584: German Roman Catholic states, Belgium;  
1587: Hungary; 1699: Denmark, Ger. Prot. states;  
1752: Britain; 1844: Sweden; 1873: Japan; 1875: Egypt; 1912-7: the remaining Balkan countries, the Baltics and China; 1918: USSR; 1923: Greece



Eventually pranks became more widespread and even a youngster could 'get hooked' or caught and be an April Fish (poisson d'avril), thus the cute - and often beautiful pc's included a fish!

Great Britain, though, brought the April Fools Day tradition to the Colonies. So you can blame whomever you wish if you get hooked this year!



We are pleased to accept from **Nancy Gambler** (#34) on behalf of **Dan Good**, the following:  
**THE PICTURE POSTCARD & ITS ORIGINS** by Frank Staff. Profusely illustrated, this very fine book is a welcomed addition. It compliments Dorothy Ryan's American reference by giving us the postcard's European roots as well as a spectrum of the postcard as it evolved into a giant throughout the western world.  
**MAIL MEMORIES** by John Kaduck (a more recent edition)

Nancy has asked **Librarian Anne Steinberg** to use her discretion in deciding what other books she donated are duplicates and should be sold in the April auction. These will appear on the auction list and the receipts donated to our treasury.

**ROSTER UP-DATE****MEMBERSHIP APPLICATION FORM ENCLOSED**

As announced at the February meeting, the Annual Membership Roster will be published in April. **THIS EFFECTS EACH MEMBER.**

You received with this March Newsletter a form which duplicates your original LCPC membership application. If you wish to make any changes from the original form please do so on the enclosure and return promptly to P.O.Box 300, Lititz, Pa., 17543-0300 or bring to the March meeting and give to Jim Ward (who will be up-dating the Roster).

**Possible changes to keep in mind:**

- 1) spelling corrections
- 2) address changes and/or zip code changes
- 3) collecting interest changes or additions

If you're not sure how your original application read, fill the enclosed in completely and return.

CORRECTION/ADDITION DEADLINE IS MAR.31.

A reminder: if, for security reasons, you do not wish your address published, please indicate such. The Membership Roster is meant to circulate among LCPC members only but the Lancaster County Postcard Club cannot guarantee this. This year's Roster will include addresses (at the request of most members). The Roster's primary use is to facilitate trades and purchases among members.

**EXHIBIT WINNERS** 

FIRST PLACE **BARB MOWRER** To My Valentine  
SECOND PLACE **DON DAVIS** Vinegar Valentines  
THIRD PLACE **ANNE STEINBERG** To My Valentine

**HONORABLE MENTIONS**

**EARL CARVER** Lovers Day  
**LEE FRY** To My Valentine  
**SANDRA SHAUB** Valentine Greetings  
**LORRAINE SINGER** Sweet Hearts  
**JIM WARD** Multiple Cupids

Thanks, **Sandy Shaub**, for over-seeing this pleasant part of our meetings. And of course, **THANK YOU**, to the exhibitors!!

**EXHIBIT THEME** 

March meeting's topics will be:

**LINCOLN, WASHINGTON, and ST. PATRICK'S DAY.** All or any of these three holidays will be judged as a whole, with a single **FIRST, SECOND and THIRD PLACE AWARD**, the remainder receiving Honorable Mention.

**BACK ISSUES AVAILABLE**

**Newsletters:** Feb. thru May 1990 - 20¢ ea.  
Jun. 1990 thru Feb. 1991 (6 pgs) - 30¢ ea.  
**Newsletter Index** to Vol. I (1990) - 30¢.

**NEW MEMBERS**

- #117 **CHRISTINE BRANDRETH** helps her husband Bert (#55) with his collection
- #118 **HELEN R. METZLER** collects rabbits and Victoriana
- #119 **JULIE BROWN** collects photos, entertainment, suffragettes and specific Pa. towns
- #120 **SALLY DANZ** collects Lancaster and postal workers
- #121 **MARJORIE WARMKESSEL** collects libraries
- #122 **ANNE DARRAH** is a dealer in postcards and paper collectibles

Greetings, gals! You sound like a group of diversified deltiologists (collectors of small pictures or cards) from the Greek deltion (sm. writing tablet/sm. picture, card) and ology (study or science)... and that member #100 (one of my two favorite sisters) is what we are!

**CLASSIFIED ADS** 

**THEY'LL DO IT EVERY TIME** Series by Jimmy Hatlo wanted. Postcard or arcade (no postcard back). **GERALD HOSTETTER** (#6), 653-4505 or bring to meeting.

**THOMAS A. EDISON** or **EDISONVILLE** postcards or literature wanted for collection. Thanks, **JOAN LEHMAN**, 1970 Temple School Rd., Dover, Pa., 17315. Phone 717-292-2888.

**SLIGHTLY USED POSTCARD PAGES 10¢, BINDERS \$1.** Help us Spring 'house-clean' at Dan's Stand on Rt. 272 at the Turnpike, Sat. or Sun. **Nancy** (#34). Nearly 75,000 more cards arrived from the warehouse in February.

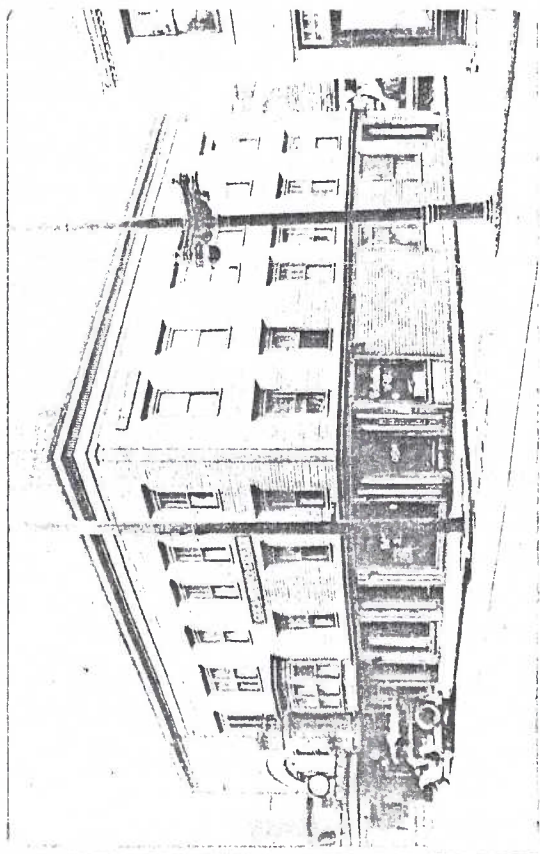
**CONTINENTAL (over-size) POSTCARD PAGES** now in stock. Also Easter pc's from 25¢. **JIM WARD** (#1). See you at LCPC and York meetings.



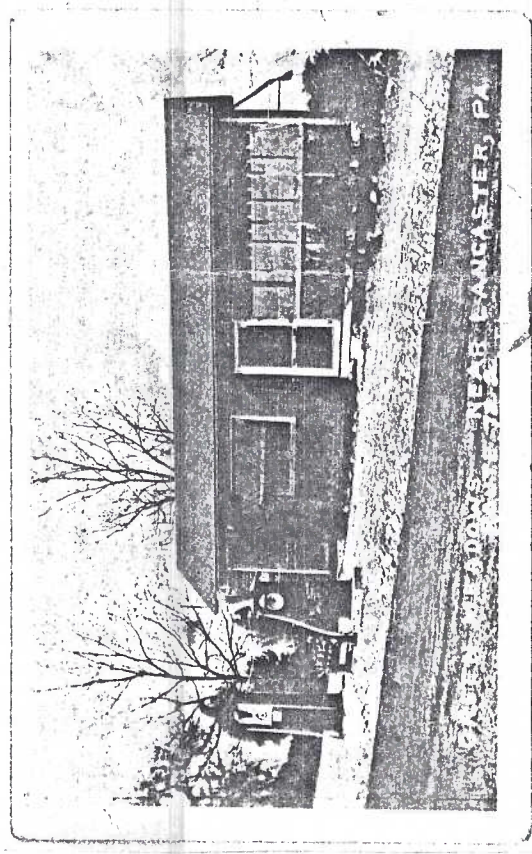
# A PLETHORA OF PUZZLING PULCHRITUDE

An onslaught of real photo postcards should keep even the best researcher busy this month. Your help for these members is appreciated. Do you have a postcard that

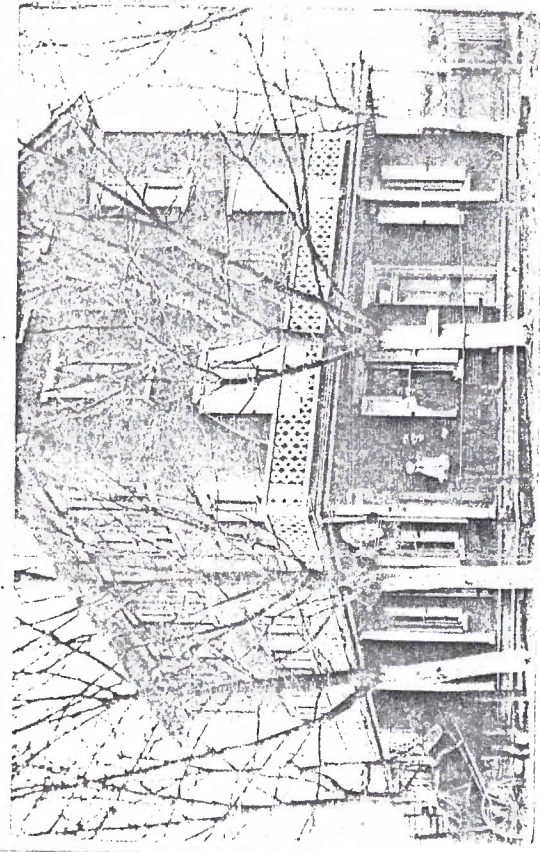
needs a name? The Newsletter will gladly feature it, just stay with general interest. (We can't help you decide if the lady in a big hat is Aunt Maggie or Cousin Bessie.)



A



B



C

Signs say COLUMBIA HOTEL but Gerald Hostetter(#6) wonders if it is Lanc. County and if not - where?? Unused. AZO/square stamp box= 1920's to 1940's.

A

Caption: GREEN MEADOWS NEAR LANC., PA. RTE. 722. Jim Ward(#1) knows #722 runs from Harrisburg Pk. to E. Pete to Neffsville to Oregon. Pumps at gas sta. are White Flash (Atlantic/Arco). Unused. DOPS stamp box = 1937-1942.

B

Paul Weidman(#24) reads B.F. KREIDER, LANC. R7 on mail box. Reiker beer sign might say R. B.....ER? Hotel on Rte. 7 south of Lanc. City? Willow St., New Danville, etc.? Unused. AZO/triangle stamp box = 1918-1930.

C

PAID MEMBERSHIP IN LCPC stands at 115 on Mar. 6, 1991. Membership numbers remain open in case our friends wish to rejoin us.