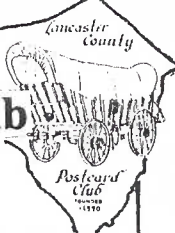


YOU ARE INVITED TO JOIN THE Lancaster County Post Card Club

MEETINGS - THIRD MONDAY EACH MONTH

1821 Municipal Drive, Lancaster, PA

Manheim Twp. Municipal Bldg., Rt. 272 half mile north of Rt. 30.



LCPC NEWSLETTER

June 1991

Vol. 2 No. 6

NEXT MEETING -

Monday 7 pm

June 17, 1991

Member bourse 6 pm

PROGRAM

June's program should be informative to everyone. Experienced framers will show us examples of how we can display unusual and attractive postcards.

Ron Ettelman (Dream Framer) of Mountville and our own member #3, Dede Schaeffer, will share their knowledge. Ron's business includes framing of all types of material while Dede, for over five years, has framed many beautiful Harrison Fisher and F. Earl Christy postcard sets and others which have been purchased by non-collectors as well as members of our hobby.

Santas, bell children, June brides and the Lord's Prayer are but a few subjects Dede works into delightful compositions. Just as Ron does, Dede uses only acid-free mats, tapes and backing in order to prolong the life of old paper items like pc's.

Even if you're thinking of just a card or two you'd like to display, this is a program you don't want to miss!



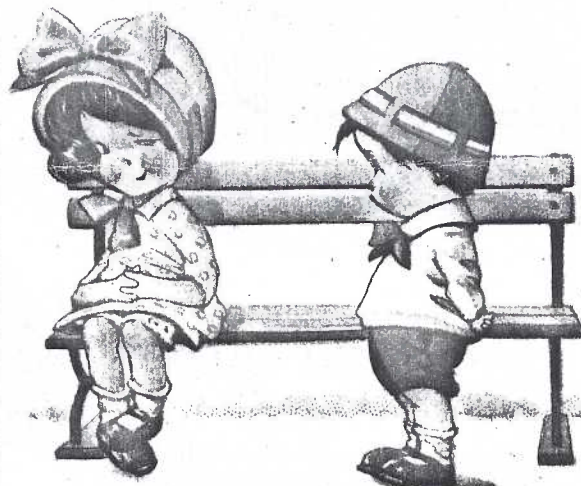
No. 29. The Roosevelt Bears Go Fishing.

"They met a lad on his way from school,
Whom they stopped to question about a rule."

This postcard from the second set (#17-32) of the Roosevelt Bears* is a likely candidate for framing. *see Ryan, pg. 181.

A STONE'S THROW OR A GOOD SPIT

That's all the farther away the new twp. building is (1840 Municipal Drive). But we will still meet at the old building - 1821 Municipal Drive until informed differently. Same nights - 3rd Mondays. Same time - 6 pm for trading, 7 pm for meeting.



No, Sonny, this bench isn't engaged,
it isn't even keeping company.

FIRST LCPC PICNIC - JULY 19

LONG PARK SITE OF CLUB'S OUTING

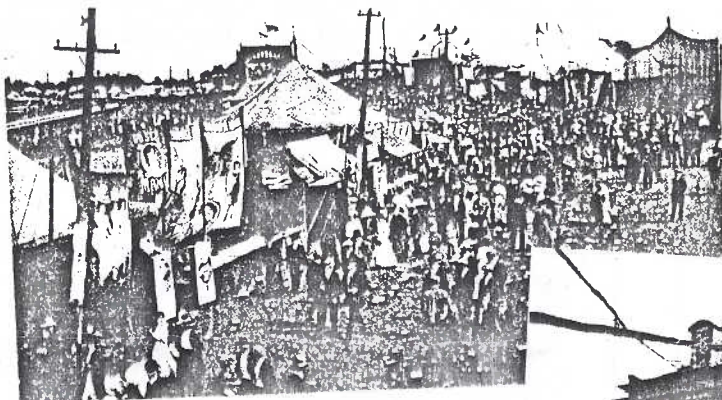
Pres. Earl Carver's picnic idea in May led to a discussion and tentative arrangements for our first Club Picnic. Friday pm was the choice of the majority. Reservations have been made for Friday, July 19 from 5 pm., supper/dinner at 6 pm, Long's Park pavilion #2A (over by the amphitheater).

There will be electric outlets and grill available. Further discussion and details will be ironed out at June meeting.

This sounds like a great informal time for us to get better acquainted - much like we did at the Christmas Party - one of the highlights of 1990. Plan to be with us. Be at the June meeting and help to finalize plans. Jim Ward will have brass quoits. Who has the sacks for the potato sack race?

1992 CALENDAR

featuring reproductions of old postcards
LANCASTER CITY &
LANCASTER COUNTY, PA



At the Great Lancaster Fair, Lancaster, Pa.

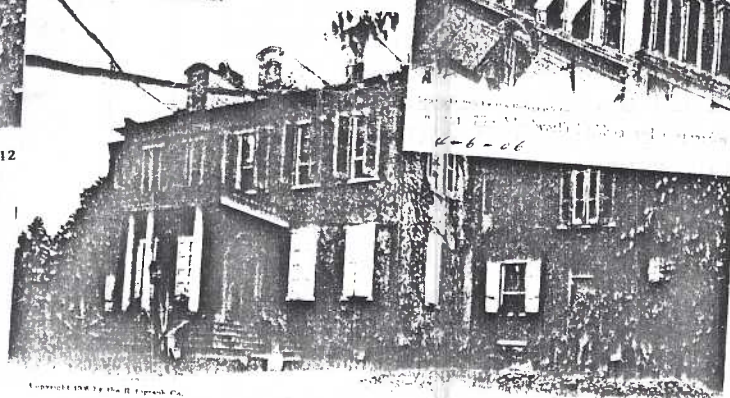
1912

sponsored by the
**LANCASTER COUNTY
POSTCARD CLUB**

meetings: 3rd monday ea. month
Manheim Twp. Municipal Bldg.
Municipal Dr., Lancaster, PA
PUBLIC ALWAYS WELCOME!

14
MONTHS!

NOV. 1991
DEC. 1992



Ex President Buchanan's residence, "Albion", Lancaster, Pa.

62
OLD
POST
CARD
SCENES

Actual size of calendar is 8½" x 11"

62 POSTCARD SCENES IN CALENDAR CLUB SPONSORS #1 IN SERIES OF LOCAL VIEWS

At the May meeting Jim Ward revealed an idea John Long and he have considered since they saw Susquehanna Valley Postcard Club's calendar of local postcard views.

Why not try the same in our area?

The two members proposed to take on the task themselves and ask the LCPC if it wished to sponsor the calendars by adding its endorsement (name) to the product. The Club would have no outlay of money, no investment. Members could act as salespeople and each calendar sold will net the Club \$1.

Retail will be either \$5 or \$6. The calendars will begin with November 1991 so the extra months will provide incentive and time to sell as Christmas gifts. Sales could begin as early as August or Sept.

The membership gave its whole-hearted approval after a brief discussion. For that vote of confidence John and Jim are most grateful. They've promised a good job.

Each month will feature a 'neighborhood of towns'. For instance, December '91 shows views of Rothsville, Akron, Brownstown and Ephrata. A brief description of each is under the 'Notes' section of the calendar.

48 towns are represented with 14 Lancaster City and suburban scenes. This 1991-92 is #1 in a series of great 'keepers'.

A POSTCARD FROM OUR PRESIDENT

Greetings, fellow deltiologists:

At our Club's National Postcard Week Exhibit at Park City Mall I was pleased by the number of people who had read the article in the Intelligencer Journal and brought some of their own postcards for us to see and appraise. Some wanted to sell, and I bought some. Others in no way wanted to part with their cards. Some are interested in joining with us in our Club.

I was also pleased by the fine number of our members who were on duty at our exhibit, and the excellent leadership Jere Greider and his helpers provided. I got to know some of you better and had my own concept of postcard collecting enlarged. As I often say, even better than collecting postcards is collecting friends.

Thinking of you!

Cordially,

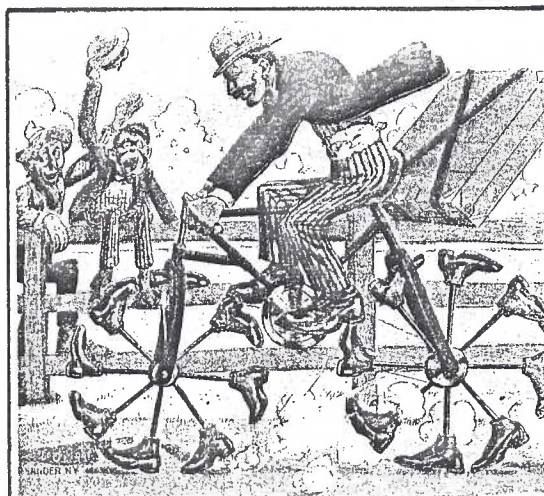
Earl

YOU MISSED IT?

June 1991 pg. 3



FUTURE SHOWS



Get there any way you can!

The 15th Annual!

KING OF PRUSSIA POSTCARD SALE & SHOW

JUNE 21 AND 22 1991

George Washington Lodge
Rte. 202 and Warner Rd.
King of Prussia, PA

Friday 10 to 7 & Saturday 10 to 4

OVER 150 TABLES FILLED WITH POSTCARDS!

Admission \$2.00

FREE APPRAISALS - Door prizes 1 p.m. each day

SPONSORED BY JOHN McCLINTOCK (Member #25)
WE CAN BE THERE IN 45 MINUTES. LET'S GO!!!

June 14-15 NY, Corning 9-5 ea. day. Am. Historic Postcard Society, Mary Martin. \$3/2 days

June 21-22 PA, King of Prussia (see adv.)

July 12-13 PA, York First Annual Show, York Postcard Club. Bridgeton Center at Howard Johnson's Motor Lodge, Rtes. #30 & #83. Fri., Noon-8 pm, Sat., 9-5. \$1 (24 dealers).

*** **WOW!!** ***

GOOD 'OLE CHARLIE'S DONE IT AGAIN!

Charlie Griffiths (#4) saw a need and did the job!

With his usual painstaking perfection our born filer came up with a wonderful compilation of all the subjects we members collect and included each member who collects that subject.

In other words, this is an alphabetical list of postcard topics taken from our roster and cross-referenced with everyone's name!

Available in gold, silver and bronze, this limited edition work-of-art can be had for sending an SASE to club address or asking for same at the next meeting. It is nearly four pages long and will be not be mailed unless requested.

May's program was another neat "Show 'n Tell" with members speaking briefly about a favorite postcard or unusual happenstance.

Rich Kestenbaum The whaling boat "Chas. W. Morgan" which he boarded at age 12 and how it effected his and his son's lives.

Don Davis Bought an album (seen only thru binoculars at a sale - from his own front porch) and it turned out to be 32 good merit cards of musicians.

Gail Foulk Her mother-in-law asked her to repair a framed photo which turned out to be a real photo pc. It started her collecting postcards!

Charlie Griffiths Discovered three church pc's marked "luminous"(he's always studying the backs) and they turned out to be a rare type that glows in the dark! And he proved it with a lights-off demonstration.

Mary Darrenkamp An engraved copper postcard she cherishes with a postmark from the John F. Kennedy, a ship that carried her nephew safely for the last few years.

Ralph Bair A picture of his grandfather's store interior showing watches, Christmas cards, etc. about 1913. Anyone have trade cards with H.M. Andrews Store for Ralph? I know two people who'd give their eye teeth for a card like that, Ralph! Lock it up.

Sandy Shaub Likes great danes and showed a beautiful colored pc of one. She'd like to know more about the artist, Bianchi, and why the unusual cut to the dane's ears.

Peg Hanna Three 1908 dated pc's are a good beginning incl. one with months. So she finally saw on what day of the week she was born. Peg wonders what else (nice) began in 1908 besides Royal Copenhagen plates which she also collects.

Jim Ward Is intrigued by the artist who liked pretzels enough to show one distinctly in silhouette with Santa and children.

Earl Carver Had a real photo pc of his father (front row, center) on a baseball team that played for the Marietta Silk Mill. Another type card currently in demand. Don't give it up, Earl, even if it is held together with tape!

John Long, an innocent bystander, wonders if we were all radiated by Charlie's luminous postcards. And an otherwise pleasant evening was enjoyed by all!

NEW CARD UP-DATE

At this printing, all cards numbered #500 to #186 have been sold. Numbers #1 to #150 are reserved for members (#135 just joined us). So you see, we're nearly sold out. If you wish an additional card - better be at the June meeting or phone 626-4660 immediately!

NEW MEMBERS

Correction. Member #127 **STEPHANIE GRIFFITHS** lives at 3700 Mass.Ave.NW,Wash., D.C.,20016. Not 3400.(pg. 4,May Newsletter)

Lost Members#94,95 DEANNA and MAURICE MILLER. Forwarding address expired.

NEW MEMBERS

- #129 **SHERRY BELL** 2312 Sunrise Ave.,Modesto, Ca.,95350. 209-523-8209.General collector,reg.and cont.sizes;identified scenery; famous people,places,homes,etc.
- #130 **SARAH E.EBY** 410 N.Maple St.,Ephrata,Pa 17522. 733-2508. Art, humor, history, travel and recipes.
- #131 **NEVIN MYER** 102 Third St.,Akron, Pa. 17501. 859-1508. Local;northern Lancaster County; Pa. Turnpike.
- #132 **JEAN MYER** same home,phone as Nevin. Local (same as Nevin)
- #133 **DOROTHY E. CRISSMAN** 349 Buch Ave.,Lancaster,Pa.17601. 569-4858. American Indians; lighthouses; local.
- #134 **AUDREY STINSON** 2712 Willow Street Pk., Willow Street,Pa. 17584. 464-5291. Lancaster County.
- #135 **BETTY A. GREGG** Box 344, Paradise,Pa. 17562. 687-6765. Local areas; baseball diamonds; bridges; all kinds-anywhere

WELCOME NEW MEMBERS! JOIN THE FUN!

USE YOUR ROSTER TO HELP A MEMBER

With your up-dated membership roster, you will know how close you are to a fellow member - perhaps one who needs a ride.

SALESMAN/SALESLADY/SALES IDEA NEEDED

The 1990 **Willows Covered Bridge** postcard sales need a boost. Who's got a good idea for distribution or sales? True, they aren't taking up much room and 'they may be a collector's item some day', but why not have others appreciate them **now** and at the same time let them know the Lancaster County Postcard Club exists! (Our name is on it.)

Where are you retired salesmen with a repertoire of great sales ideas?



Lancaster County Postcard Club dues: \$7 per person annually, \$10 per family. Mail to: Treasurer Howard Steinberg 645 Robt. Fulton Hwy.,Quarryville,Pa.,17566.Other elected officers: Pres. Earl Carver (684-3069), Vice-Pres.Sandra Shaub,Secretary Shirley Neidermyer,Directors:Don Davis, Dorothy Fry, Jere Greider,Rich Kestenbaum, Jerry Kotek, and Walter Mowrer.

Permanent Committee Chairmen: Auction Walter Mowrer,Monthly Exhibits Sandra Shaub, 50/50 Harry Lines,Greeter Anne Steinberg Historian John Long,Librarian Anne Steinberg,Membership Dorothy Fry,Publicity Lorraine Singer,Newsletter Artist Jim Rudisill Editor Jim Ward (626-4660). Newsletter and general club correspondence address:P.O.Box 300, Lititz,Pa.,17543-0300.

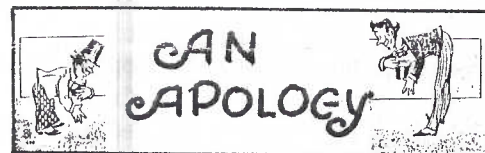
This month's humor postcard may not touch everybody's funny bone.



A wart is a misfortune--
A mole is a calamity--
But whiskers is a man's own fault

—Wood B. Witly

Copyright 1988 by Canterbury Co.



AN APOLOGY

The **Intelligencer Journal**, May 3,1991, carried a big (½ page) article about our exhibit kicking off National Postcard Week.We thank **Lorraine Singer** our monthly publicist for arranging the interview. For those members saving the article or those new at our hobby, please make the following marginal corrections:

- 1) 'The 1930's produced **many** poorly made post cards'. But certainly Jim did not mean to imply that **all** were poorly made.
 - 2) The **Union** Oil Co. (not Gulf Oil) produced the first chromes in 1939. (This was entirely Jim's error - and he hangs his head in shame!) 'Must have been thinking of the Gulf War.
 - 3) Of course our 'current exchange card' is **not** E.Lampeter Twp.'s Willow Covered Bridge but the Buchanan 200th Anniversary postcard
 - 4) French embroidery was sewn into long strips **then** cut and mounted into individual postcard frames with backings.
- ED. NOTE: Now I know why some people never allow interviews. But it was a very nice article over-all. And we thank Intell.

Greetings from Atlantic City

WHAT IS IT?

Luke had it before. Paul had it behind.
Matthew never had it at all.
All girls have it once. Boys cannot have it.
Old Mrs. Mulligan had it twice in succession.
Dr. Lowell had it before and behind, and he had it twice as bad behind as before.

The answer is under the postage stamp

Postcard cancelled April 12,1906.

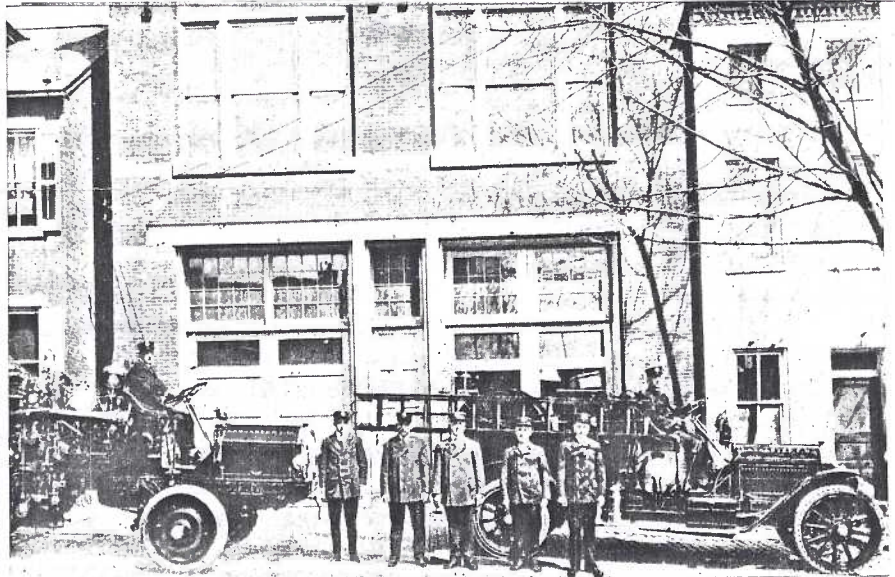
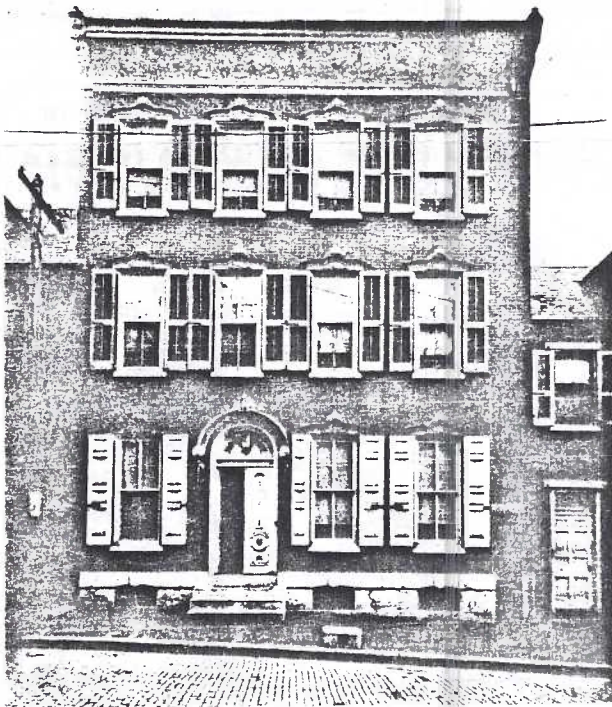
Biography of Lancaster PC publisher, Chas.O.Lynch, continues from May issue.

As a Charter Member of Lancaster Lodge No. 299, Loyal Order of Moose, Charles proudly published a set of seven postcards showing the new headquarters acquired by the Lodge at 220 East King Street in 1914.

Printed by Kropp (no date known) the black and white set consists of:

- #12322 Moose Home, 220 E. King St., Lancaster, Pa. (vertical, blue sky)
- #12436 Reception Hall, Moose Home, Lancaster, Pa. (horizontal)
- #12437 Lodge Room, Moose Home, Lancaster, Pa. (horizontal)
- #12438 Reading Room, Moose Home, Lancaster, Pa. (horizontal)
- #12439 Buffet in Grill Room*, Moose Home, Lancaster, Pa. (horizontal)
- #12440 Dining Hall, Moose Home, Lancaster Pa. (horizontal)
- #12441 Ladies Parlor, Moose Home, Lancaster, Pa. (horizontal)

*appears to look more like a large, ornate bar



Left #12322 postcard by Kropp. Set of seven (incl. 6 interiors)

Above #12855-N postcard by Kropp. (Co.1 on S. Queen St. now houses apartments.)

The Lancaster Fire Department converted its horse-drawn fire apparatus to motorized vehicles over several years (between 1914 and 1918). Mr. Lynch had the foresight to recognize this historic event. He was able to 'capture' horse-drawn equipment of two companies before they converted.

Printed by Kropp in 1918, the black and white set consists of:

- #12854-N Engine Co. No. 3, Lancaster, Pa. (horizontal)
- #12855-N Engine Co. No. 1, Lancaster, Pa. (horizontal)
- #12868-N Truck Co. A, Lancaster, Pa. (horizontal)
- #12891-N Engine Co. No. 2, Lancaster, Pa. (horizontal)
- #12945-N Chief's Headquarters, Engine Co. No. 5, Lancaster, Pa. (vertical, blue sky)
- #12946-N Engine Co. No. 4, Lancaster, Pa. (horizontal)

Although the invoice shows delivery of all six postcards at one time, the lapse between **postcard numbers** might indicate that Lynch's photos (and orders) were received at intervals but held pending one shipment. What is evident, is that the three earliest orders were for cards with the **new motorized equipment**.

Was this pride to get the new equipment 'in print'? And yet, enough of the historian not to miss the nostalgia of the horse-teams of companies #2 and #4?

Conclusion in July issue.

EXHIBITS

With a light turn-out of membership (it appears vacations have begun) but an excellent representation of a popular subject- "Smorgasbord" -anything your heart desires, votes were spread thin. In fact, a runoff vote was needed for second place!

Eleven great boards:

Anne Steinberg (FIRST) In Memory of Our Heroes

Helen Hellinger (SECOND) Melissa Helen

Jere Greider (THIRD) Coca Cola Trucks

HONORABLE MENTIONS

Earl Carver Israel Revisited

Don Davis Almost Human

Lee Fry Buster Brown & His Bubble

Charlie Griffiths Sets

Harry Lines Masonic

Martha Stoner Brasil

Jim Ward Everybody Likes Pretzels

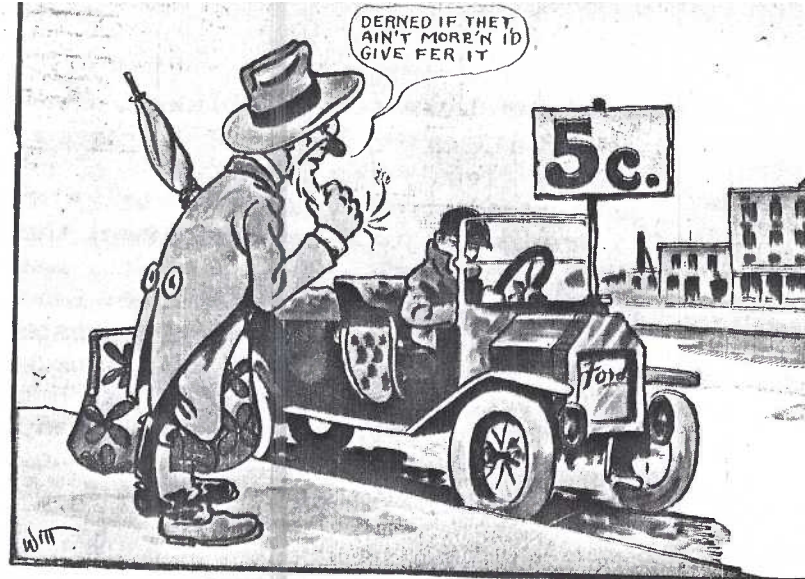
Jim Ward Pansies

It's always nice to see new faces among the exhibitors. Why not try a board for June? Subject: **TRAVEL AND TRANSPORTATION**. That sounds like it could be RR depots, autos, inclines, airplanes, bicycles, roller skates, wheel chairs, carousels, roller coasters, trolleys, boats, hang gliders, airships, elevators = anything 'on the move'.

Let your imaginations run wild!!! The crazier the more fun!

Check May's Newsletter for guidelines. Boards should be standard 22"x28"(vertical)

The 'What Is It?' answer is the letter "L".



UNIDENTIFIED P.C. DEPT.

Gordon McKinzie(#31)boldly goes where no man has gone before - except Jim Luty(#30)- in offering a **\$15 REWARD** for proper identification of the real photo postcard at right. Sm.lettering beneath **PENN-GREEN GARAGE** reads **DEI-BERT-MARSH PROPRIETORS**.

Other signs read: **KRIT MOTOR CARS**, **Atlantic Refining Co. AUTOMOBILE GASOLINE FOR SALE HERE** and **Service Station GOOD YEAR TIRES**. Reach Gordon at 757-3479 or write to 1301 Chamber Ridge, York, 17402.

