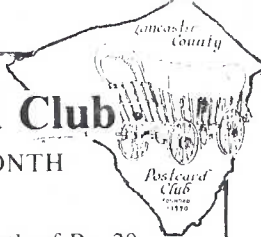


YOU ARE INVITED TO JOIN THE Lancaster County Post Card Club

MEETINGS - THIRD MONDAY EACH MONTH

1821 Municipal Drive, Lancaster, PA

Manheim Twp. Municipal Bldg., Rt. 272 half mile north of Rt. 30.



LCPC NEWSLETTER

September 1991

Vol. 2 No. 9

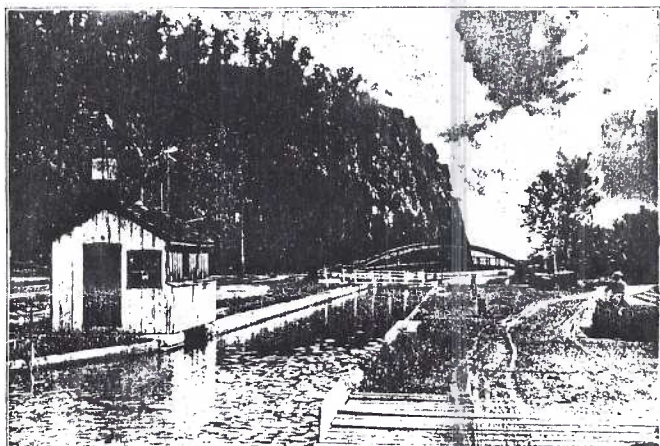
NEXT MEETING

Monday 7 pm

September 16, 1991

Members sell/trade 6 pm

PROGRAM



Chickies Rock - Marietta, Pa.
© 1988, Adams

Chickies Rock, Marietta, Pa., W.J. Wike, Publ.
(Also shown - canal and revolving bridge)

Charles (Bud) Heim, member #78, continues the recent line of programs on local views. We've been delighted with Tom Beck's Lancaster cards related to Thaddeus Stevens in July. Russ Mull continued the performance with common and very uncommon Hershey chocolate bar postcards in August.

And now Bud, a native of the Susquehanna River country, will show us top-notch views of Lancaster County's River Towns from the Dauphin County line to the Maryland border.

A CTC trolleyman's son and a youngster who kicked around the shoreline most of his life, we're sure to hear some wild tales with great cards to match! Be there.

AUCTION ACTION

It's next month! Our quarterly auctions are getting better all the time! Lots must be to Walt Mowrer or Jim Ward no later than Sept. meeting!

INFORMATION WANTED

Do you have postcards related to local elections...specifically those published for 'salt river' travelers? I would like to include the information in a November Newsletter article. Please contact editor before Oct. 1.

NEW MEMBERS

- #146 LEWIS D. BECHTOLD 385 Conestoga Dr., Lancaster, PA 17602, 299-5969. Civil War, military pre-1900, Lanc. City & County
- #147 JOHN M. AURAND Rte. 2, Oley, PA 19547 (215) 987-3349. Churches and railroads
- #148 CHARLES R. MOORE 804 Reservoir St., Lancaster, PA 17602-2145. 393-8025. Lancaster and vicinity; some general pc's
- #149 DORIS B. MOORE Same address, phone and pc interests as Charles. That's cozy!
- #150 MICHAEL T. HENSON 14909 Del Diablo Ln. San Diego CA 92129. (619) 672-2820. State capitals, maps, bridges, tunnels, rds, hwy's
- #151 HARVEY J. BOMBERGER P.O. Box 34, Myers-town, PA 17067. (717) 866-5029. Bridges, individual buildings.

Did any body notice? We just passed another landmark - 150 MEMBERS! (and some of them, sponsored by our President, joined us while he was touring in the British Isles!)

YOU ARE ALL MOST WELCOMED. A revised membership roster will be mailed you after the New Year. Meanwhile enjoy our Newsletter and join us at our fun meetings!

FUTURE SHOWS



NEARBY POSTCARD SHOWS

WIND GAP, PA. OCT. 6 Lehigh Valley Postcard Club. Plainfield Twp. Firehouse (Old Rt. 115). 25 dealers. Sun. 9 to 4. \$1. donation.

ALLENTOWN, PA. OCT. 12 Great Eastern Paper Show. 17th and Chew (Fairgrounds). Sat. 9:30- 6. 156 dealers. \$4.50 adm. w/ticket.

TIMONIUM, MD. OCT. 25, 26 Monumental Postcard Club. Days Hotel. 9615 Deereco Rd. (I-81, exit 17) Fri 10-7, Sat 10-4. 25 dlrs. \$1.
YORK, PA. NOV. 22, 23 Horticulture Hall, York Fairgrounds, Fri 9-7, Sat 9-5. 50+ dealers. \$2. (\$3 for 2 days)

LANCASTER, PA. NOV. 29-30 Morlatton PC Club Farm & Home Ctr. Arcadia Rd. (Rt. 72 turn at Jones Pontiac) Fri 10-7, Sat 10-5. 25+ dlrs. \$1

Lorraine Singer wishes to thank members kind enough to send her get-well postcards.

DIABOLO = The Devil Top

A doubleconed top spun on a string held between two sticks. That's DIABOLO as it was played in 1712 and perfected in 1906 by C.B.Fry (from an article by Susan Nicholson in a back issue of the Postcard Collector).

Jim Rudisill, #66, remember's one left from his father's childhood. He admits it was devilishly difficult to throw the spinning top and catch it -on the string!



Rabbit set/6(#E37)Anglo-Am.Tuck's Oil-ette set #9536 (Louis Wain cats). Girl is from series #782 unknown German publisher. Have you a bear, cupid or Santa at diabolo?



POLLY GIVES AN AFGHAN!!

Pauline (Polly) Curtis (#124) has another hobby besides postcards. She knits afghans! And she would like to share her love in the true Christmas spirit - by donating the proceeds of an afghan to our Club!

You will find a raffle ticket with this month's Newsletter. If you wish, you may bring it signed with your name and address on the back of the blank half and one dollar (\$1) to the Sept. meeting or mail it to P.O.Box 300, Lititz, Pa., 17543-0300 before Oct. 15. Additional tickets may be purchased at the Sept. meeting.

The afghan will be on display at both Sept. and Oct. meetings. Drawing will be at the Oct. meeting. **The second part marked KEEP THIS TICKET** is your proof of donation. Winner will be published in Nov. issue.

Thank you, Polly, for your kindness to our Club! And thanks to all who wish to support our Club - we're really a fine bunch!!

NEWSLETTER EXCHANGES

Some are monthly, some quarterly, some 'now and then', but we usually have newsletters/bulletins at our meetings from these Clubs:

Lehigh Valley Postcard - Easton, PA
Metropolitan Postcard - New York, NY
Monumental Postcard - Baltimore, MD
Susquehanna Valley - Northumberland, PA
Webfooters Post Card - Portland, OR
Wolverine Post Card - Hazel Park, MI
York Post Card - York, PA

Do YOU know of a PC Club that would like to exchange with us? Contact the editor.

EXHIBITS

August's theme, Black People, netted five entries. They were:

JIM WARD (FIRST) The Old South
BARB MOWRER (SECOND) Ah Lubs de Melons
DON DAVIS (THIRD) Up From Slavery

HONORABLE MENTION

BETTY BROWN Black Is Beautiful (old pc's)
PAULINE CURTIS Black Is Beautiful (new pc's)

'Good to have two new members join the fun. Our thanks to these folks for their efforts and now on to September's theme - BACK TO SCHOOL or CHILDREN. These cards are much more plentiful, so let's see twice as many exhibit boards in Sept.!

And don't forget, members, in lieu of cash awards this year, there will be **gold coins** presented at our Annual Christmas Banquet and Awards Dinner to the top winners for 1991!!! ED.NOTE: Well, it's something to dream about, isn't it?

On a related matter. The easel used for exhibit displays needs a member to tote it to the meetings. Will you volunteer for a few times? If everyone offers to do a small job for just 3 or 4 months it eases the burden for the few who are doing it all!

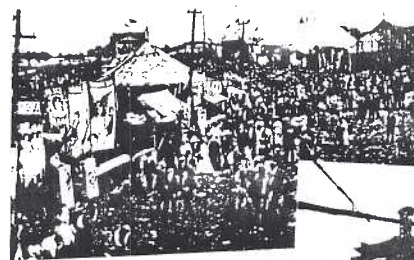
The same applies for our fine projector and screen. Jose and Carl were kind enough to donate them. Now let's have someone be a 3-month custodian.

1992 CALENDAR

featuring reproductions of old postcards
LANCASTER CITY &
LANCASTER COUNTY, PA

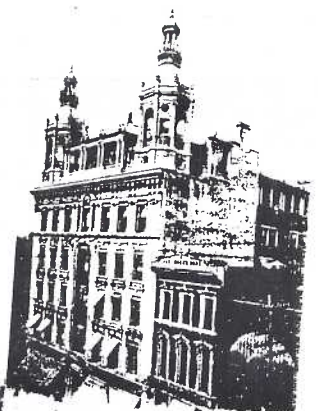
Sales of the 1992 Lancaster City & County Postcard Calendars are moving along well. At the Sept. meeting \$47 will be given to the Treasurer for those sold by members to date. If you can sell a few pick them up at the meetings or phone John Long (397-1663) or Jim Ward (626-4660). \$5 ea., \$6 by mail. The Club gets \$1 for each sold by members.

Two sales pitches work: they begin in Nov.1991 (**14 months**) and they make **great gifts** - esp. for folks who've moved from the area but still think of it as home.



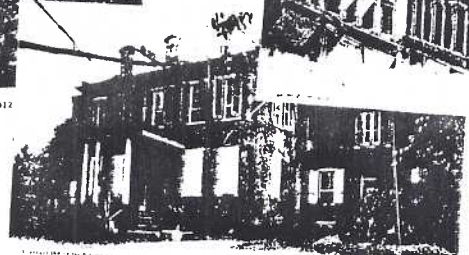
The Great Lancaster Fair, Lancaster, Pa 1912

**14
MONTHS!**
NOV. 1991
DEC. 1992



sponsored by the
**LANCASTER COUNTY
POSTCARD CLUB**

meetings: 3rd monday ea. month
Manheim Twp. Municipal Bldg.
Municipal Dr., Lancaster, PA
PUBLIC ALWAYS WELCOME!



Actual size of calendar is 8 1/2" x 11"

**62
OLD
POST
CARD
SCENES**

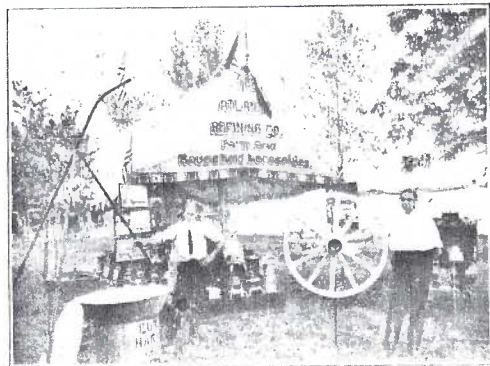
LANCASTER FAIR ON POSTCARDS

An 1874 City map shows the Lancaster Agricultural Park near the cemetery between New Holland Ave and Park Ave. But it wasn't until later that the **Lanc. Co. Agricultural Society** "purchased a tract of land containing 43 acres just outside the limits of Lanc. City on the Columbia branch of the Penna. Railroad, affording excellent passenger and freight facilities".

It was **this** Fairgrounds that is featured on at least six local postcards. In 1909 the First Annual Exhibition took place on Oct. 12,13,14,15. The 1909 Program reads:

"An elegant track for trials of speed has been made, a grandstand, a stable and other buildings and improvements will be provided, and plans are being made for a fine display-instructive and entertaining."

LANCASTER FAIR-SEPTEMBER 27TH-30TH, 1910



10 a. m. when a set of harness will be oiled with **EUREKA HARNESS OIL**. I would like very much to have you inspect the demonstration on one of the days of the fair, and if you think well of the operation, would like to have you bring in your harness and allow me to oil it for you.

Lowell's Harness Store

40 West Orange Street,

Lancaster, Pa.

Meet Me at the FAIR

I am having installed in my store a **Eureka Harness Oiler** for oiling harness of all descriptions.

By the use of one of these Oilers your harness will be thoroughly oiled, as every part of the leather becomes thoroughly saturated and at the same time you can save money, as the operation can be done in a very much shorter time than by the usual method. One of these Oilers will be in operation at the display of **The Atlantic Refining Company** at the Fair, and a practical demonstration will be made each day at

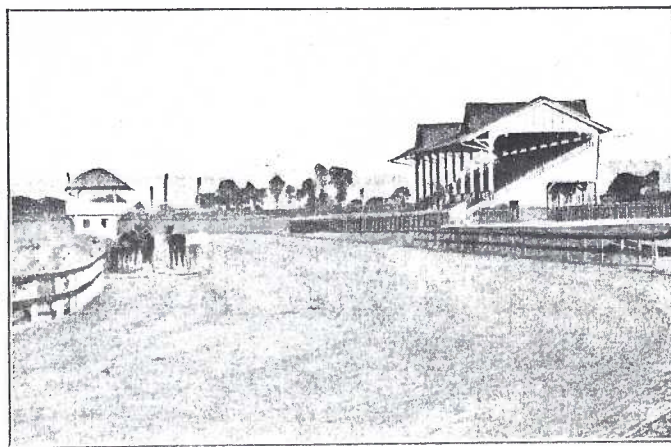


Post Card
SEP 26
PH PM
1910

Shown are two 1910 postcards - one an ad by **Lowell's Harness Store**. (This even shows the Eureka Harness Oiler on the address side.) Dated just before the Fair, from Phila., it shows how well these pre-fair ad cards were

distributed. The **Big Fair** pc, (date on the address side) tells exhibitors and advertisers whom to contact. These 1910 ad pc's along with the 1913 and 1914 ad cards are scarcer than the most 'view' Fair cards.

Lancaster County Fair, Sept. 27, 28, 29, 30



View of Grand Stand and Track at Lancaster Co. Fair Grounds

BE READY
FOR THE

Big Fair

Come Out With the Crowd

Get a Look at the Wonderful

AIR SHIP
2 FLIGHTS DAILY

Other Free Exhibitions

CATTLE, POULTRY, ART,
MACHINERY,
and many other **Exhibits**

TROTTING, RUNNING,
MOTOR CYCLE
AND NOVELTY **RACES**

THE 1910 LANCASTER FAIR

Will be the greatest ever held in this County. Why not have an exhibit there yourself? Get catalog of premiums and make up your mind to win. Send To-day.

I. C. ARNOLD, Sec'y
53 N. Duke St., Lancaster, Pa.

The L.B.Herr pc's of 1912(all with the same caption) show an entrance, the grandstands, the Mid-way (Conestoga Trail) and exhibit tents.

Sept.1991 page 5



At the Great Lancaster Fair, Lancaster, Pa.

1912 Fair October 1, 2, 3, 4.



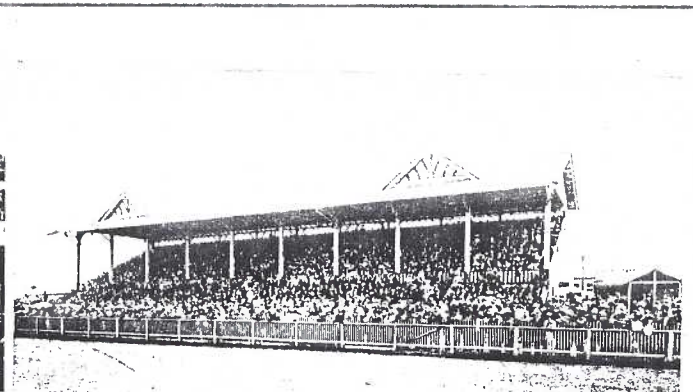
At the Great Lancaster Fair, Lancaster, Pa.

1912 Fair October 1, 2, 3, 4.



At the Great Lancaster Fair, Lancaster, Pa.

1912 Fair October 1, 2, 3, 4.



At the Great Lancaster Fair, Lancaster, Pa.

1912 Fair October 1, 2, 3, 4.

D.B.Landis's only Fair pc is "The Main Entrance". Dated 1913, message says "This is the gate we entered into the fair. The grounds almost connect with Long Park."

Landis' Main Entrance some of us remember seeing on the Harrisburg Pike long after the fair was discontinued. It was used for carriages, autos and foot traffic.

Entrance to Fair Grounds, Lancaster, Pa.

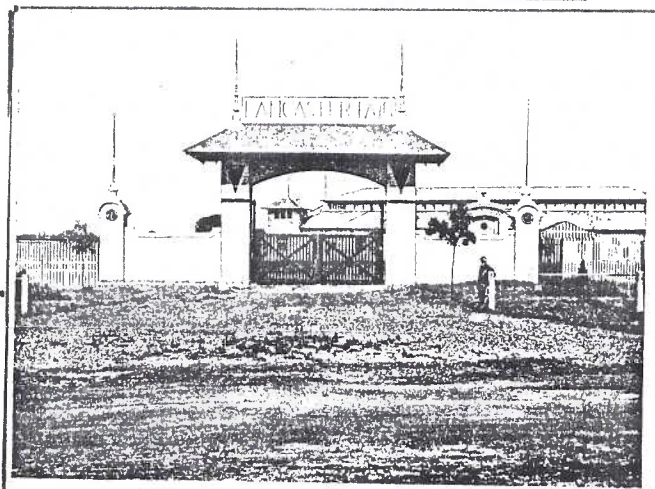
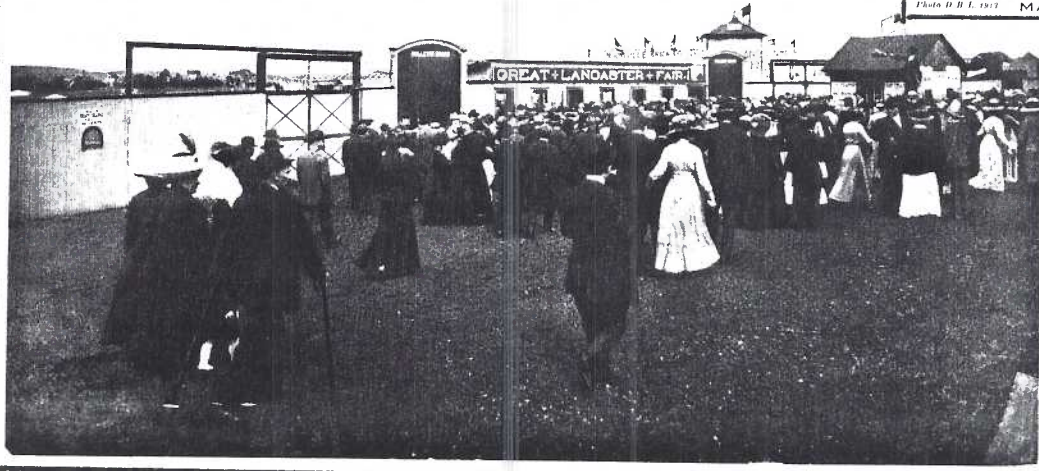


Photo D.B.L. 1913 MAIN ENTRANCE TO FAIR GROUNDS, LANCASTER, PA.

65%



Was this L.B.Herr/Steinfeldt 'entrance' the one used by train passengers? Considering the crowds shown, it's a reasonable assumption as trains of 12 cars with 88 riders each were generally full!



"PIGS IS PIGS"
LANCASTER FAIR
Lancaster, Pa.
SEPTEMBER 30, OCTOBER, 1, 2, 3, 1913

Example of a Talbot-Eno Co., Des Moines, card. Most show children or ladies holding produce or animals. All have similar captions, several with some color.

All seen so far are dated Oct. 1, 2, 3, 1913 and are these numbers: B3, B37, B38, B41, C4, C14. Please contact Charlie Griffiths if you have **different** numbers on your cards.

Bernie Heisey (#7) has two pc's drawn by Florence Starr Taylor (see August issue) in addition to those shown. Let us know what you have and we'll publish the full listing.

SMITHSONIAN MUSEUM PLEA

Dorathy Fry read in Aug. 'Home Beautiful' the Smithsonian 'is asking for donations of post-cards featuring cities, architecture, gardens, bridges, highways to augment its collection. Pop your favorites into an envelope and address then to the museum, Attn. Archives, Pension Bldg. Judiciary Sq. NW, Wash. DC 20001'.



This dandy 1914 real photo pc shows the Butzer auto dealership. They sold Fords, Studebakers and Jefferys in Lanc. and Ephrata. Photo pc by King, 309 E. King St., Lanc.

In The Heritage of Lancaster, J.W.W. Loose says "the managers of the Fair insisted on no gambling and clean, nonalcoholic entertainment. Prospective attendees stayed home." And so the Lancaster Fair disbanded in 1933.

CLASSIFIED ADS

COCA COLA Any pc's or paper items incl. other soft drinks. Jere Greider #17.

JIMMY HATLO They'll Do It Every Time. Pc's and arcades (no backs). Gerald Hostetter #6.

½ PRICE SALE

My current stock of 6,000+ holiday greetings and topical postcards are offered at ½ **PRICE**. This means all former 50¢ cards **NOW 25¢**. All others reduced likewise. **CASH SALE ONLY**. Come early - stay late. Jim Ward.

These little numbers **70%** tell how much of the actual postcard size you're seeing. So 70% means the pc has been reduced 30%.



Lancaster County Postcard Club dues: \$7 per person annually, \$10 per family. Mail to: Treasurer Howard Steinberg 645 Robt. Fulton Hwy., Quarryville, Pa., 17566. Other elected officers: Pres. Earl Carver (684-3069), Vice-Pres. Sandra Shaub, Secretary Shirley Neidermyer, Directors: Don Davis, Dorathy Fry, Jere Greider, Rich Kestenbaum, Jerry Kotek, and Walter Mowrer.

Permanent Committee Chairmen: Auction Walter Mowrer, Monthly Exhibits Sandra Shaub, 50/50 Harry Lines, Greeter Anne Steinberg, Historian John Long, Librarian Anne Steinberg, Membership Dorathy Fry, Publicity Lorraine Singer, Newsletter Artist Jim Rudisill, Editor Jim Ward (626-4660). Newsletter and general club correspondence address: P.O. Box 300, Lititz, Pa., 17543-0300.