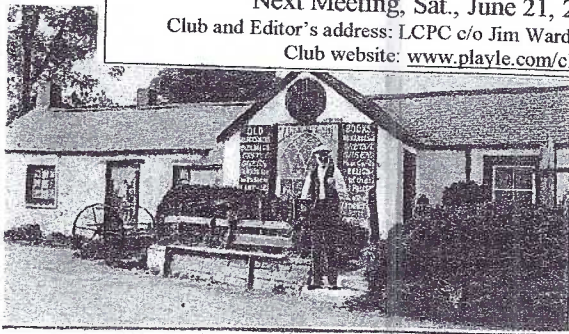


THE CARD Vol. 14, No. 6. Issue 162. June 2003
 Monthly Publication of the Lancaster County Postcard Club, Lancaster, PA.
 Enjoying postcards through education and entertainment.

Next Meeting, Sat., June 21, 2003. Picnic at The Heim's Home. Arrive about 1 PM
 Club and Editor's address: LCPC c/o Jim Ward, 1795 Kleinfeltersville Rd., Stevens, PA. 17578-9669 or midcreek@ptd.net.
 Club website: www.playle.com/clubs/lanaster or Google search: lanaster county postcard club

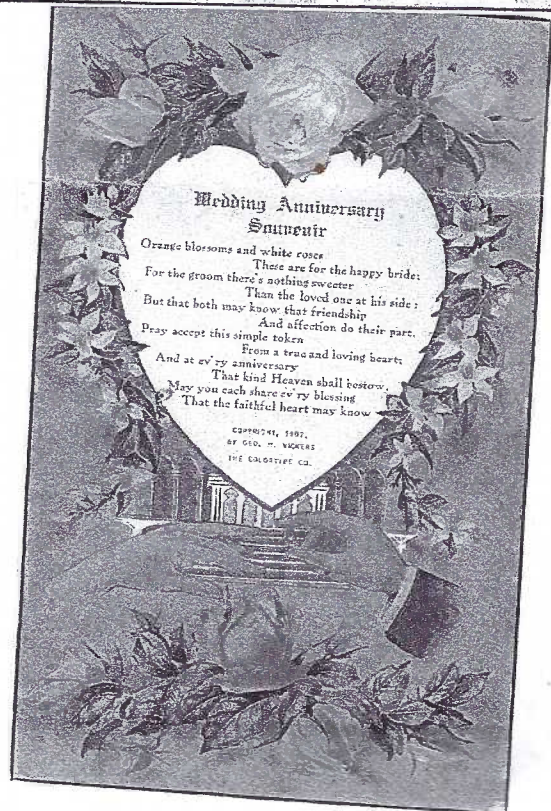
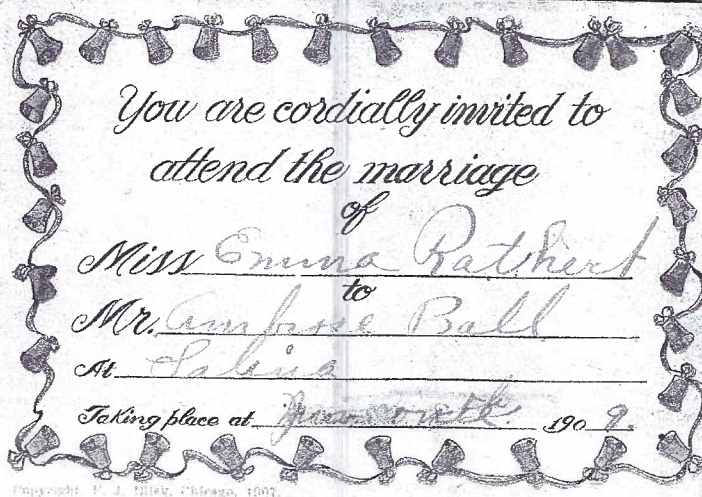
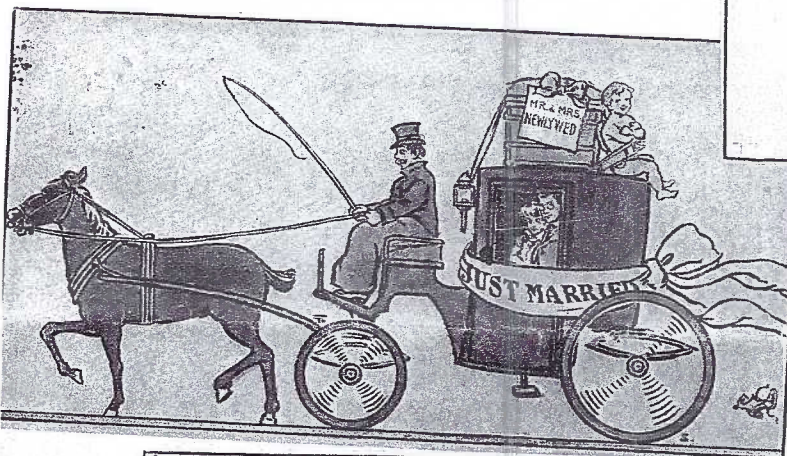


KINGDOM OF SCOTLAND.
 COUNTY OF DUMFRIES—PARISH OF GRETN.

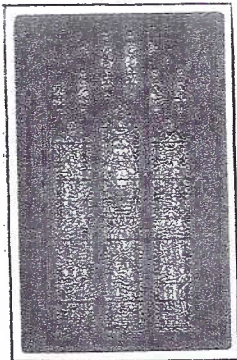
These are to Certify to all whom they may concern:

That... *Hector Graeme Mappin*
 from the Parish of... *St. Andrew's*
 in the County of... *Fife* and
Oliver Emily Ridadel
 from the Parish of... *Marham*
 in the County of... *Essex*
 being now both here present, and having declared to me that they are Single Persons,
 have now been Married after the manner of the Laws of Scotland: As witness our hands
 at the Old Blacksmith's Shop, Gretna, this... *22nd*
 day of... *April 1929*

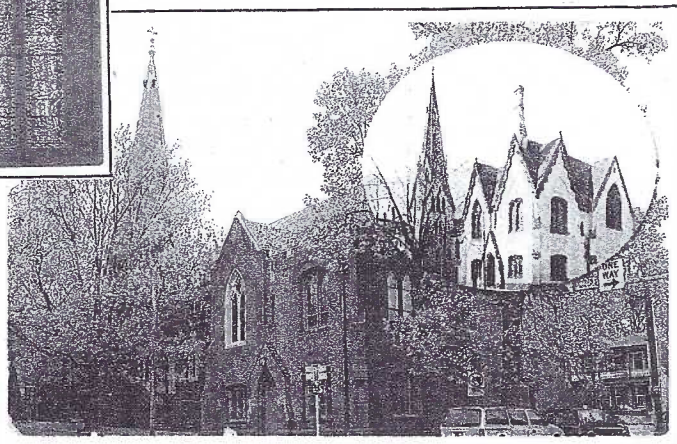
Parties: *Hector Graeme Mappin*
Oliver Emily Ridadel
 Witnesses: Name... *Elizabeth Little*
 Address... *Charlisle*
 Name... *Mary Murray Little*
 Address... *132 Gray St. Berlin*
 Priest... *Jessie Pennington*



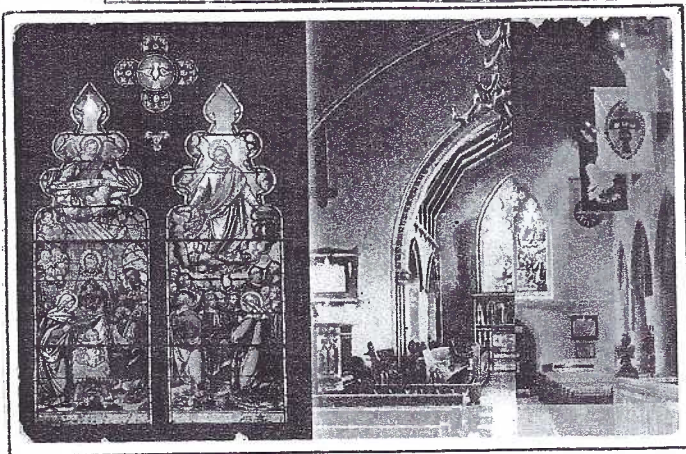
Your June CARD includes one of these six St. John's postcards, thanks to LCPC #679, Sharon Gromis and her church.



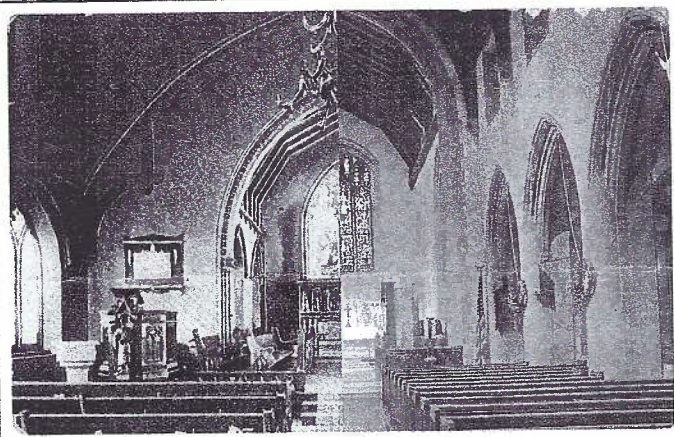
2.



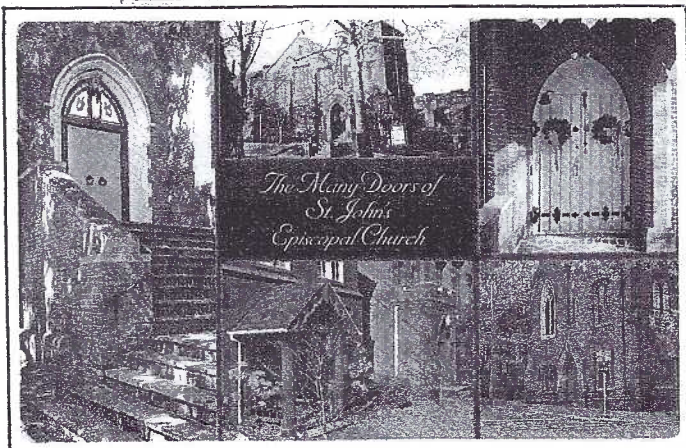
1.



4.



5.



6.

St. John's Postcard Set

At our March Free-for-All, member Sharon Gromis who is also a member of St. John's Episcopal congregation displayed a new set of six postcards that the church published for its 150th anniversary. Bless the folks on the postcard committee – **the cards are all regular size format!** All are in color and those featuring stain glass windows are particularly stunning.

These are the descriptions on the postcards:

- 1 - St. John's today (2002) and yesterday (inset 1903).
- 2 - Christ enthroned in Glory. Dedicated Oct. 27, 1946
(Showing three stain glass windows.)
- 3 - The Vision of St. John on the Isle of Patmos.
Dedicated 1910. (Stain glass window.)
- 4 - The Nativity/Ascension window. Yesterday (at the front of the church 1901) and today (in the back of the church 2002). (Two views on this card.)
- 5 - 100 Years Difference – Interior of St. John's, 1901 (left) and 2001 (right). (Two spliced views.)
- 6 - The Many Doors of St. John's Episcopal Church. Clockwise from left: Main doors to church facing Chestnut St., Parish Hall, Breezeway doors leading to Church, Doors to Undercroft, Becker House/Church office doors. (Five views on this card.)

You may contact Sharon at 1-717-892-6864 or write to 632 Eastside Dr., Landisville, PA 17538. The cards are \$1 each or the set of six for just \$5 (a bargain). Please enclose a #10 SASE.



3.

St. John's Episcopal

150th Year Celebration

The imposing Gothic building stands on the northwest corner of W. Chestnut and N. Mulberry Streets. Its red brick face follows the tradition of thousands of brick homes, churches, schools and factories throughout the city.

Nearby brickyards were some of the more active industries in Lancaster when the present St. John's Episcopal Church was built in 1882-83. The half dozen or so postcards that exist of the church, however, belie the orange-red view we see today. Earlier PC views all show the bricks with white stucco that contrasts against the stone and wood trim.

Rev. Samuel Bowman, originally of St. James Episcopal Church (E. Orange and N. Duke Sts.) is credited with founding St. John's in 1853. It began as a mission to provide Sunday school classes for that neighborhood's families, according to an article in the Feb. 7, 2003 New Era. The congregation grew steadily as the western end of the city was developed.

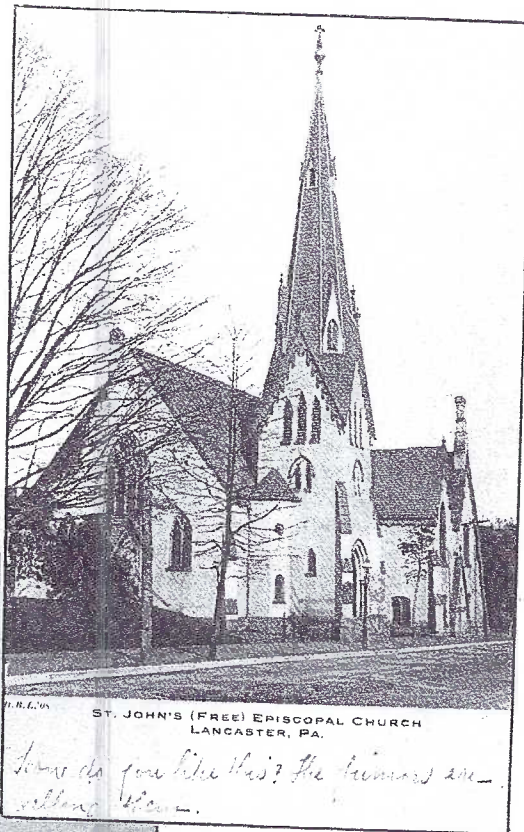
In 1899, Rev. Wm. F. Shero became rector of St. John's and moved it from a "low" evangelical school to the "high" Anglo-Catholic tradition. The Lancaster congregation has the distinction of being the first Episcopal Church in the PA diocese to offer its pews rent-free. A card published by D. B. Landis in 1908 is captioned St. John's (Free) Episcopal Church.

Today's congregation numbers nearly 800 with 200-250 attending on a regular basis. St. John's prides itself in being very active in community work, with a happy congregation of thinkers and movers.

Early church records (to 1917) show only two Horst names. On June 24, 1902, Rev. W. F. Shero married David Franklin Horst and Mary W. Miley. The couple also received communion at St. John's. Is it speculating to consider the two PCs sub-captioned "Mrs. D. F. Horst's S. S. Class" resulted from Mary's endeavor?

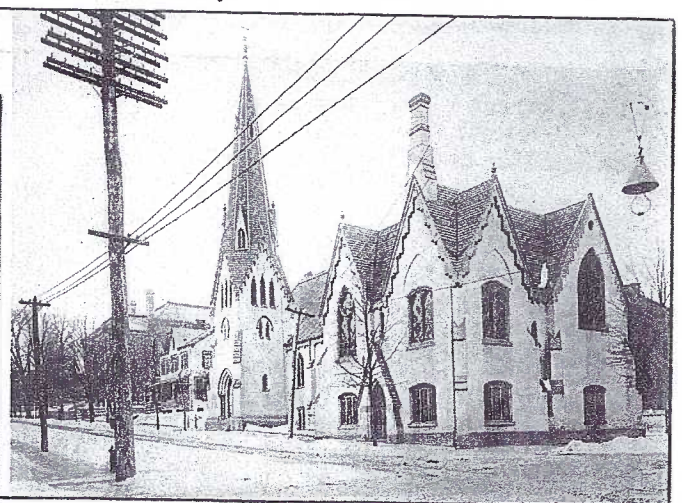
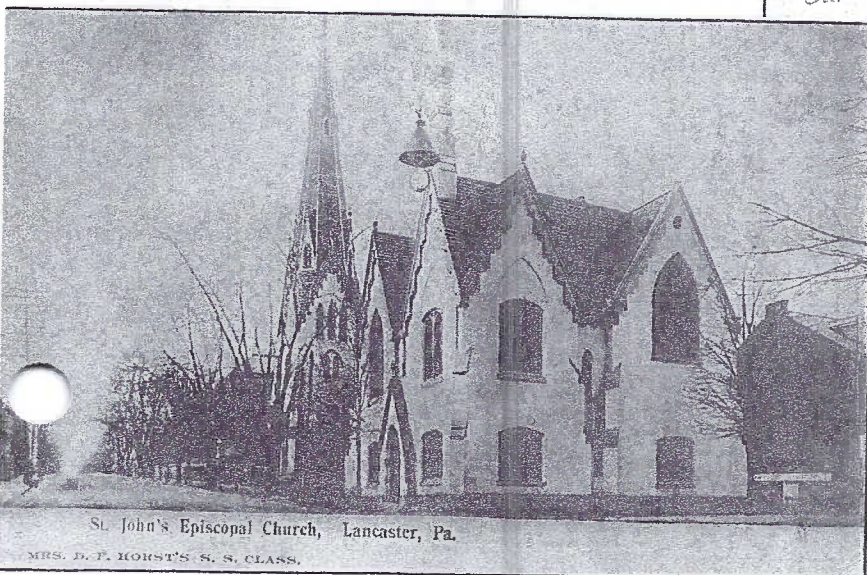
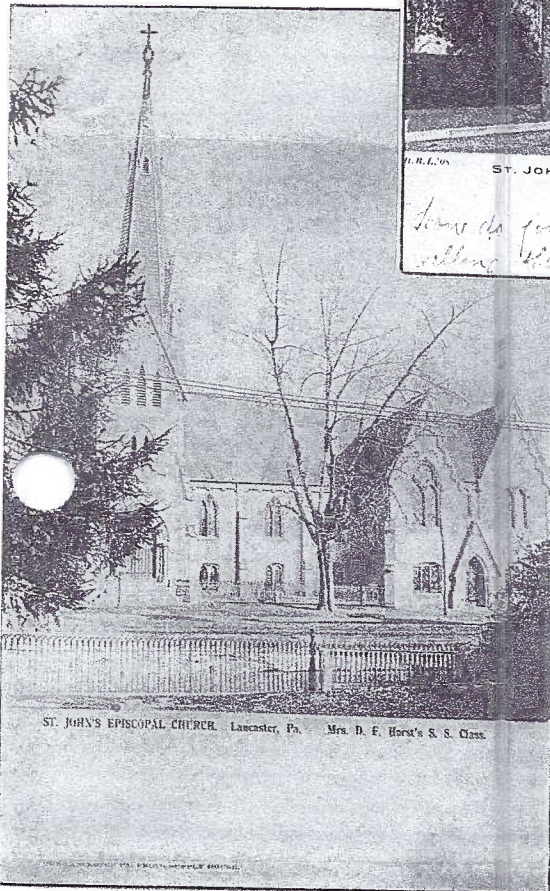
On the 1908 D. B. Landis printed card, Emily asks "How do you like this? The Juniors are selling them." Did Mary Horst's S. S. class sell their real photo post-cards as well? Was the Landis card also Mary's idea? We may never know. Mary Horst died Feb. 4, 1914 at age 49 and was survived by her father, Jacob Miley. She was interred in the Lancaster Cemetery.

D. B. Landis 1908 view notes "Free" St. John's Episcopal Church. It was the first in the PA Diocese to offer rent-free pews to its members.



The red brick veneer was returned in the 1921 renovations. Roof lines were altered as well. Many thanks to Cynthia Minnich for these building details.

Real photo postcards (left and below) have sub-captions "Mrs. D. F. Horst's S. S. Class." The stamp box on each is formed by a series of dots, a local indicator that they were printed by Lancaster Photo Supply House (name appears on the top view).



Real photo view on 1904-1918 photographic paper stock clearly shows, in the background, the Stevens High School at the corner of W. Chestnut and N. Charlotte Sts. It was built in 1904 and occupied the western half of the block beyond St. John's Church.

COVER CARDS

Left column -

June is traditionally the month for weddings. We contradict this tradition with our first postcard, from the "Kingdom of Scotland", parish Gretna. Many cards have been published of the little village of Dumfreisshire in the parish. Its blacksmith shop was noted for numerous clandestine marriages, not unlike Reno, Nevada and, closer to home, Elkton, MD.

Lord Russell in Edinburgh, in 1939, ruled the legend to be unfounded. Nevertheless, this marriage certification, dated April 22, 1929, by an unknown publisher, would have us believe Hector Graeme Mappin and Olive Emily Ridsdel were married that day with witnesses from nearby Carlisle.

A second card (on this page) and likely by the same unidentified publisher, features the same famous blacksmith shop. This time we see the parish priest and his marriage register "ready to perform the ceremony."

The middle card in the left column, with a 1907 copyright by Artad Press of Philadelphia, shows Mr. and Mrs. Newlywed and the ubiquitous Cupid hitching a ride on the roof of their hired carriage.

The final card in the left column includes the message "You must thank me for letting you know" and signed N.P.R. It's addressed to Mr. and Mrs. John Rathert, Box 353, Junction City, KS. It was mailed from Bushton, KS on Sept. 6, 1909. Can a reader explain this to the rest of the membership?

Right column -

The top card, printed entirely in blue pastel, is signed by Frank Carolan O'Neill. He also dated it 1920. O'Neill was famous for his beautiful women on postcards. The Theochrome Series 601 card also includes Cupid who seems to have sprinkled confetti into the sky and spelled Good Luck. And the shoe??

By far the prettiest marriage card on our cover is Matrimonio, the second card in the right column, an early chromolithograph published in Italy. Raffaele Tafuri is the talented artist.

Geo. M. Vickers, in business as The Color-type Co., published the final card in late 1907. (It has a divided back.) Outlined in lilac, his Wedding Anniversary Souvenir poem includes this sentiment - Orange blossoms and white roses

These are for the happy bride;
For the groom there's nothing sweeter
Than the loved one at his side;
But that both may know that friendship
And affection do their part,
Pray accept this simple token
From a true and loving heart;
And at ev'ry anniversary
That kind Heaven shall bestow,
May you each share ev'ry blessing
That the faithful heart may know.
Gretna Green is in County Dumfreis, Scotland. Was Mount Gretna in Lebanon County, PA named for it?

Earl Carver in Therapy

Earl Carver, LCPC #18, and our second president, is in the Mennonite Home, 1520 Harrisburg Pike, Lanc., PA 17601. He's on a regime of daily therapy as he recuperates from a stroke he suffered last month. An avid PC correspondent, it's now *our* turn to send cards to Earl and pray for his speedy recovery.

REBMAN'S TO MOVE

"We're going to let the building go, not the business."

The New Era recently reported that the Earl F. Rebman store, at 800 S. Queen Street would be searching for a new location. Meanwhile, the company's newer and larger store at 1775 Columbia Ave. will remain open.

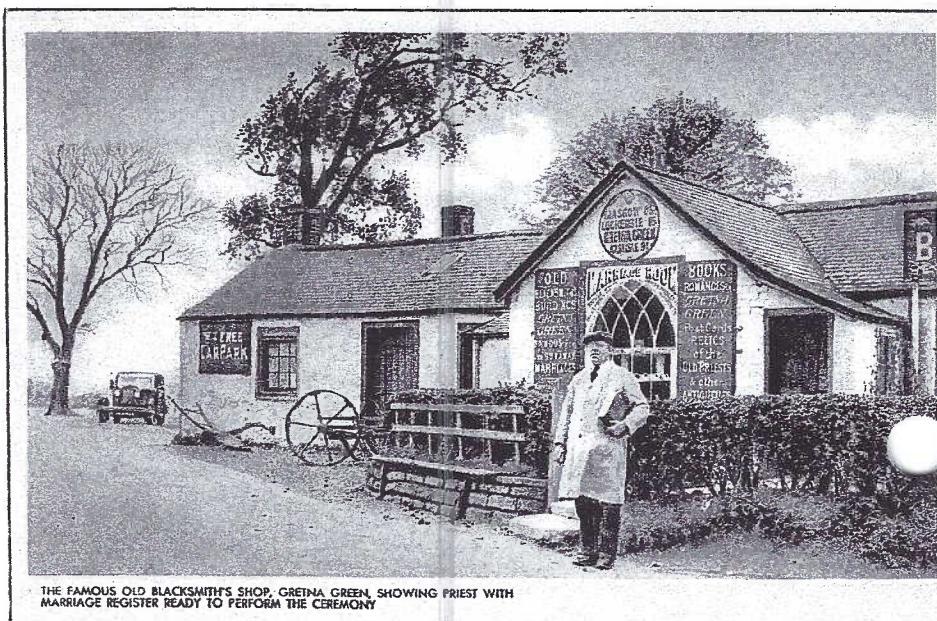
Since 1949, thousands of us have shopped the Queen St. store. The company's origin goes back forty years earlier and candy was its product. On real photo postcards of the 1950s (see illus.) you can see "Candy Co." appears on the company sign. Candy now occupies but a small portion of the store shelves.

Earl and his boys (he was the father of six) centered their inventory around the needs of festivals and carnivals, catering to fire companies that relied on their products for fund raising. In May, 1984 Earl Sr. died. His family suffered a second loss the following month when a fire devastated the S. Queen St. store.



This real photo PC was mailed from Denver, CO in 1951. The mimeographed message solicited company business. "Dad and the boys will welcome your patronage while I serve our country." It was sent by PFC Don Rebman who was stationed at Lowry A.F. Base. The card went to the Magnolia Fire Co., Inc., Kent County, Magnolia, DE. Two years later the same view was still in use. It was mailed to nearby Southern Manheim Twp. Fire Co.

Continued on next page.



THE FAMOUS OLD BLACKSMITH'S SHOP, GRETN A GREEN, SHOWING PRIEST WITH MARRIAGE REGISTER READY TO PERFORM THE CEREMONY

EXPO EXHIBIT BOARDS

Ruth Moyer announced a slate of four categories for the 2003 Expo. She reminds us that until the June meeting, additional subjects will be considered. Begin organizing your cards for exhibiting in these categories:

Views – Past or Present (an opportunity for collectors of Moderns and Chromes to show their cards)

Occupations

Holidays

Any Number from 1 to 10 (a single number, such as 3 will be the common denominator for the board, such as 3 vehicles on each card or triplet children).

Hints for Exhibiting

Making your first board? Use a standard poster board (preferably white) available at local craft or book stores. It should measure 28"x34". Please do not use foam board or extra heavy stock. Our exhibit easels are equipped with large paper clamps (one per board) and they will not accommodate foam or heavy-weight.

Boards must be oriented in portrait mode (narrow edge at top and bottom). Clear photo corners are available at craft or photo stores or you can keep your cards sleeved and attach them with tape on their backs.

Give your exhibit a title. You may include additional information if you wish. Your name must be on the back of each board. Boards must be in the hands of Ruth and Harold Moyer anytime before the Expo, Expo eve (6 to 8 PM) or the morning of the Expo before 8 AM. No exceptions.

A single exhibit may include not more than two boards. Be certain you give this information on the application.

2003 EXPO EXHIBIT FORM

Mail this form or a duplicate to Ruth Moyer, 135 Whitehall Rd., Reinholds, PA 17569. Ph. 336-6644. You are encouraged to enter all four categories. If you intend to use two boards (maximum) in any one category, please note this below. Include your titles now, if at all possible. This form must be in Ruth's hands on or before August 12, 2003.

Judges, selected from the dealers on Saturday morning, before the show, consider the following criteria:

Postcard Information 1/3

Presentation and Originality 1/3

Condition, Completeness and Rarity 1/3

1st, 2nd and 3rd places receive \$15, \$10 and \$5 in each category. *Best of Show*, chosen from the 1st place exhibits, receives \$25. *Peoples Choice*, chosen by ballot, receives \$25. All entries receive a specially designed 2003 Expo Award postcard.

I will have an entry in the categories listed below-

Views, Past and Present _____

Occupations _____

Holidays _____

Any Number 1 to 10 _____

Member's Name _____

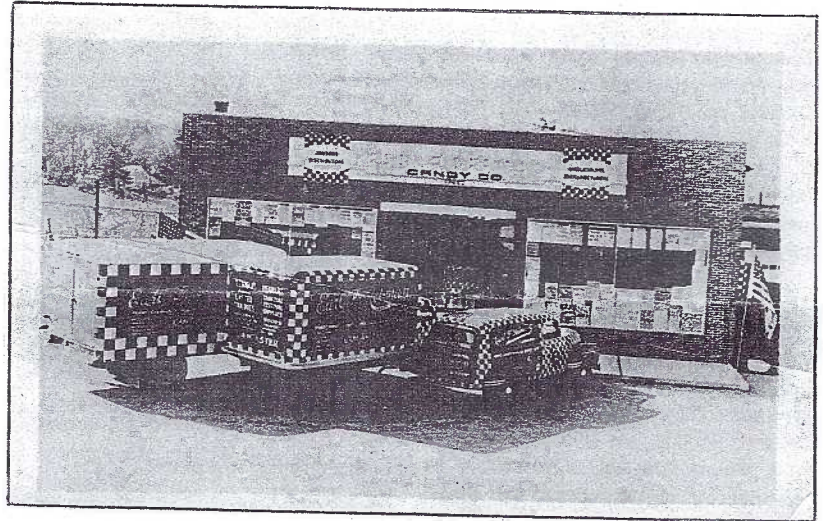
Member's Phone Number _____

REBMAN'S TO MOVE

Continued from previous page.

Esther Rebman (LCPC #479) had married Earl Sr. and his ready-made family in 1964. With the sons the business continued to prosper. Today, Earl Jr., the only son still in the business, has plenty of help from his own family. His three sons, a daughter and a son-in-law continue to serve Lancaster and many communities far beyond.

Earl Jr. feels a better location can be found for more walk-in trade and so the Queen St. building will be sold, but not the business.



This second real photo PC was mailed from Lancaster in April, 1955 as the company's busiest season approached. "Look! Before you buy...at the most beautiful carnival line in America." This time the senders were the Rebman Brothers. The recipient was the Reliance Hose Co., a fire house in Snyder County, Middleburg, PA.

For many years Rebman's unique checker-board trucks were seen about our neighborhoods.

In 1907 the Ullman Co. published this set of four comic children: The Meeting, The Proposal, The Wedding and The Marriage Trip.



May Meeting

Set up and Selling were Gary Hawbecker, Dede Schaeffer, Al Schaub, Jim Ward, Walter Mowrer, Mike Middleton, the Bishops, the Moyers and the Steinbergs.

Door prizes were won by Ruth Frankhouser, Sharon Gromis, Betty Sowers and Ngoc Kreider. The extra prizes were donated by Norman Zimmerman. Jim Ward has two door prizes each month. Their value is exchanged by advertising space in *The Card*.

Jackie Flaharty won \$35 in the 50/50 and promptly donated \$10 back to the club. Thanks, Jackie. Our 50/50 gets larger as more members attend. There were 67 present in May.

Expo Chair Jere Greider reported about 20 of the 25 dealer tables are sold. There is a Sign Up sheet for volunteer work at the Expo. It will be at the next two meetings or you can contact Jere at 285-5872 or jereg@earthlink.net.

Set Up is Friday, Aug. 15 from 6 to 8 PM. Volunteers to sell our *Windows to Our Past* books are needed along with ticket sellers on Saturday from 8 AM to 5 PM; Tear Down help is from 5 to 6 PM.

We certainly will miss **Mary Ann and Bill Guntow**. They're preparing to move closer to their daughter in CA. Meanwhile, Bill has just suffered a stroke! Mary Ann was our secretary for several terms and handled a portion of the library. Bill was a director and recently handled the 50/50. We need volunteers for that portion of the library as well as the 50/50 sales. Contact Pres. Benner and tell him you'd like to contribute a little time and effort for LCPC.

Questions and answers and several compliments rounded out Jim Ward's presentation of local DBL postcard views. Requests for copies of the checklist (it's in our library) will necessitate making additional copies. If you have an interest in one for yourself, contact Bryan Benner or Jim. The 39 pages are tentatively priced at \$5.

MONTHLY COMPETITION

The subjects began with the letter "M"... The month of May and Mothers Day were absent, but there was still a variety to entertain the non-participants. A 3-way tie, then a 2-way tie for Second Place kept Ruth Moyer and Gisela Withers counting and counting and counting. The results:

Harold	First	Memorial Day
Walter Mowrer	Second	Marietta
Tom Beck	Third	Merriment

Honorable Mentions

Bryan Benner	Motels and Motor Courts
Norman Zimmerman	Memories
Sandra Schaub	Mucha Maidens
Ray Bubb	Military - Tours of Duty
Jim Ward	Music for Lovers of Classics and Others
Brian Frankhouser	Manheim
Earl Carver*	Maverick Musicians

*"You-Can't-Keep-Him-Down, Earl, was in guarded care at the Lancaster General Hospital, recovering from a stroke and his wife, Helen, brought in his entry.

Thanks to the participants. Join us with a single card at the June picnic. The subject, Food.

FUTURE SHOWS

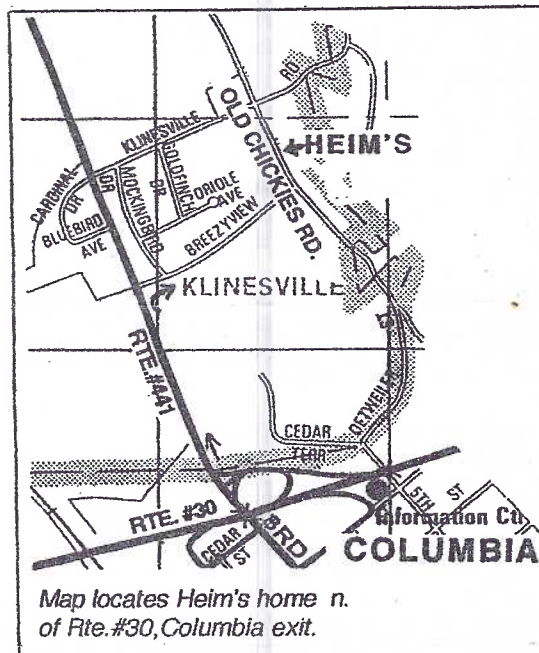
June 8 Towson, MD. Days Inn, 10-5. Free admission.

July 12, York, PA Aldersgate Church, Tyler Run Rd., west of I-83 south of York. 8-5. Adm. \$1.50, \$1 w/ad.

June Picnic-Meeting

Once again, it's the Heims' turn to host our summer picnic/meeting. It will be on Saturday, June 21 at their home on Klinesville Rd, just north of Columbia. (See accompanying map.) Barb and Bud will expect arrivals beginning at 1 PM. The meal will be between 3:30 and 4 PM. Bar-b-que and hot dogs will be provided as well as place settings.

You are asked to bring a hot or cold covered dish with serving utensils and lawn chairs. Weather need not be a factor, facilities are for rain or shine.



NEW MEMBERS

#702 Marie Glass, wife of Richard Glass, #450. New address: 47 Blackhorse Rd., Paradise, PA 17562.

#703 Susan Norbeck, 685 Cortleigh Dr., York, PA 17402. Ph. 757-1675. E-mail snorbeck@suscom.net. Sue collects York views, greetings, Tuck publisher. Ellen Clapsaddle, advertising, and sets.

Membership Chair Betty Beck reports 40 delinquent members have paid since Tom sent PC reminders last month. There are still far too many (63) who've failed to send in their dues. If you know someone who hasn't received *The Card* since March, tell them why. This year's increase in dues is the first in more than 10 years and is in line with most other active PC clubs.

DO YOU KNOW

WHERE YOUR POSTCARDS ARE?

Warm and humid weather will be upon us soon...yeah, right! Yes, it really will, so be certain your cards are standing upright - in albums or boxes - and in the part of your home where you are active; the part of your home where you're comfortable - not the basement, not the attic. Remember, you're just the temporary keeper of your cards. The next collector will hope they're in the same good condition in which you found them.

Postcard pages and sleeves protect your cards all year round. They're available from Jim Ward at the Lancaster and York meetings, the Lancaster and York shows and Amos Herr Park, Landisville, on Labor Day and Memorial Day.