



THE CARD - Vol. 15. No. 1. Issue 169. January 2004

Monthly Publication of the Lancaster County Postcard Club, Lancaster, PA.

Enjoying postcards through education and entertainment.

Next Meeting: Mon., Jan. 19, 2004. Farm & Home Center. But, sell and trade from 5:30.

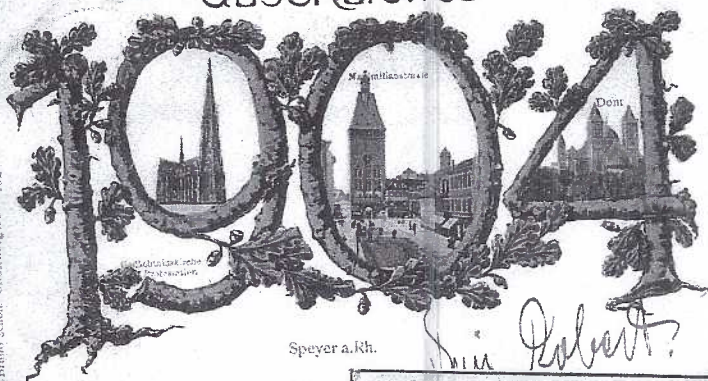
Club and Editor's address: LCPC c/o Jim Ward, 1795 Kleinfeltersville Rd., Stevens, PA. 17578-9669 or midcreek@ptd.net.

Club website: www.playle.com/clubs/lancaster or Google search: lancaster county postcard club



Bonne
Année.

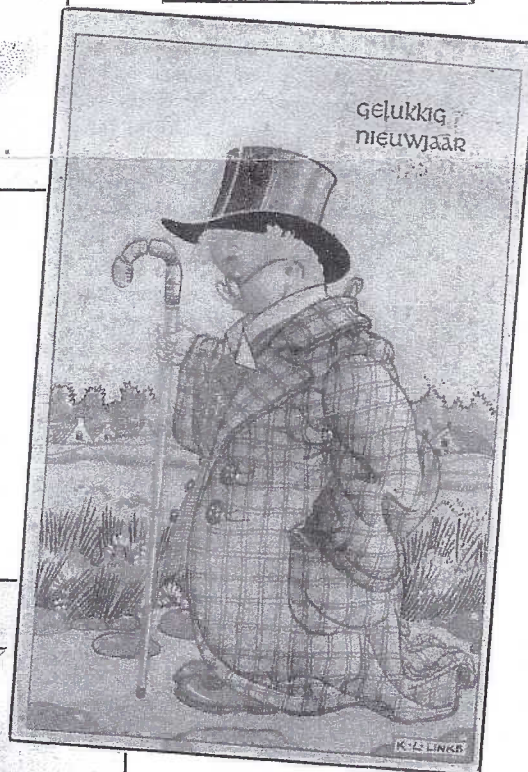
GLÜCKLICHES



Speyer a. Rh.

Robert

D. R. O. M. No. 191723



gelukkig
nieuwjaar

Onnellista Hukka Wuoltti 1907



loivottan
VIIVI VIENO RAJALA.

Descriptions of
Cover Cards
on page 5.



Lancaster Views

New Set of Four Postcards

Your editor seldom finds it necessary to venture into center city Lancaster and so relies on fellow member (and now past president) Bryan Benner to find the latest Lancaster views. A set of four extremely well-executed cards have recently been published by Historic Lancaster Walking Tour Corp.

They are (in numbered order):

K47867 Penn Square

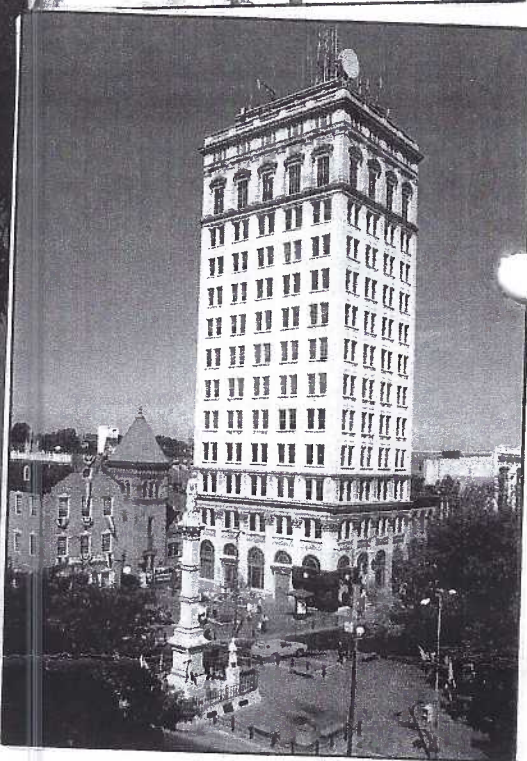
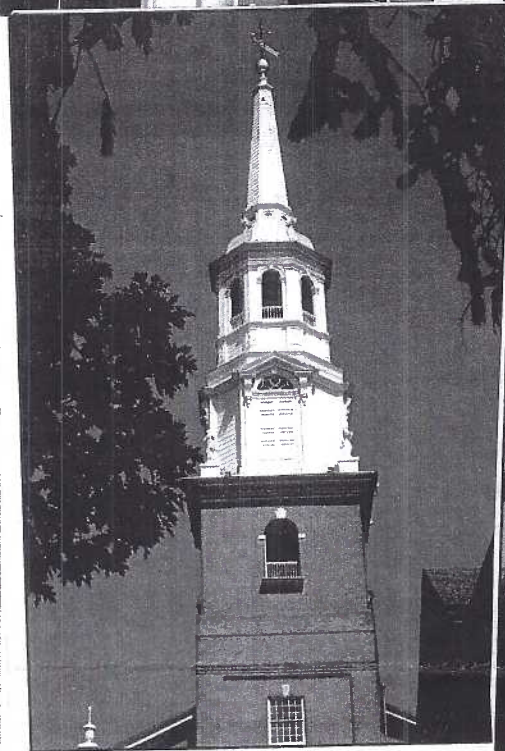
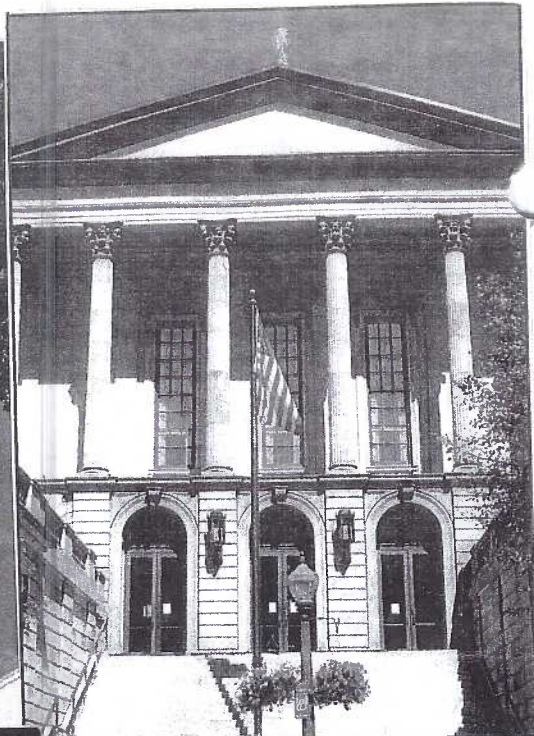
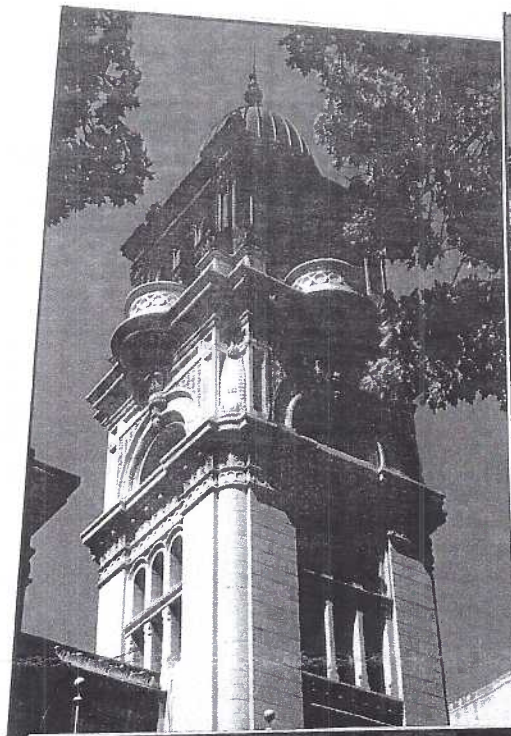
K47868 Court House Façade

K47869 Trinity Church Steeple

K47870 City Hall Tower

Am. Souvenirs & Gifts of Gettysburg printed the cards (all continental size).

HLWTC is closed for the winter but the four cards are available by writing to Historical Lancaster Walking Tour Corp., 100 S. Queen St., Lanc. PA 17602. They will be mailed, postpaid for \$2, or you may wish to wait until Spring. Why not take the walking tour?



Sin glückliches Neujahr!

"A Happy New Year" by artist Arthur Thiele. One of six designs in series #1470 by Theodore Stroefer, a quality printer in Nurnberg, Germany.

MIKE MIDDLETON POSTCARDS
See my postcard stock on Sundays 8-4 @
RENNINGERS ANTIQUE MALL
RT 272 ADAMSTOWN PA

Or 7 days a week @
HERITAGE ANTIQUE CENTER
Rt 272 ADAMSTOWN PA
(between Renningers and Stoudts Black Angus)

Milliken Names Staff

At the annual Christmas party, president-elect Doug Milliken simplified the election process by naming those members who volunteered or were selected to staff his 2004 year. Most are carried over from Bryan Benner's term. Here is a list of next year's officers and directors along with membership numbers and phone numbers (check roster for e-mails):

Pres. Douglas Milliken #317	1-717-295-3135
Vice Pres. Sharon Gromis #679	1-717-892-6864
Secretary Gisela Withers #525	1-610-582-2131
Treasurer Barabra Mowrer #69	1-717-684-5331
Directors -	
Ruth and Harold Moyer #62, 63	1-717-336-6644
Ray and Carol Dennis #278, 279	1-717-290-7948
Dede Schaeffer #3	1-717-392-3955
Jim Ward #1	1-717-721-9273

Bryan Benner and his officers and directors are to be congratulated for the fine year they presented our club during 2003. **WINTER NOTE** - Keep these phone numbers nearby, if there's a question of weather or not a meeting will convene.

Fun Stuff

For would-be historians and those who like to play matching games, below is a list of our past presidents. Can you match them to the years they served? There are 14 years and 12 presidents. Two presidents served twice - but not in successive years. Answers are elsewhere in this issue (if your editor didn't forget to include them).

1990	Susan Glass	1997	Jim Ward
1991	Betty Beck	1998	Tom Beck
1992	Ruth Frankhouser	1999	Earl Carver
1993	Dot Fry	2000	Walt Mowrer
1994	Walt Mowrer	2001	Bob Kramer
1995	Bryan Benner	2002	Don Davis
1996	Lewis Bechtold	2003	Jim Ward

Monthly Competition

December's topic was the letter X. Even though just a single card was needed, there were only four participants.

X might be a tough topic, but there are cards that spell Christmas with an X (Xmas) and three of the entries were these.

Ruth Moyer FIRST Santa Claus and binoculars
Harold Moyer SECOND Santa Claus and children

Jim Ward THIRD Father and son on an X-cursion
 Honorable Mention

Walter Mowrer Christmas girls on a ladder
 January's topic should provide lots of participation, so get off your holiday duffs and assemble a board of *Winter Activities* or *Winter Scenes*.

January Program

In recent years we've devoted January's program to Member Participation. This year, appropriately, the theme of a single card from each member should be relative to the number FOUR. Your card need not show a numeral 4 (though it may). It can contain four of anything and anyone, but FOUR should play a significant part of the subject.

Sharon Gromis, our new VP, is in charge of programs. She will be collecting your cards. They'll be shown on the opaque projector. Keep your comments to less than two minutes or suffer a crispy card in return! Do you remember what your English teachers taught you? The best presentations are concise.

Christmas Party

For the second successive year the venue for our club's Christmas party was the Farm & Home Center. We use 1/3 of the huge room for our monthly meetings. For the party, we used the remaining 2/3 of that room.

The Kitchen Kommittee, Ruth and Harold Moyer, were covering tables at 5 pm. They also supplied the hot and cold beverages and place settings. Eleven round tables easily accommodated the 71 members and their families who began assembling by 6 o'clock.

Reverend Dick Bishop offered a prayer and we began the meal at 6:30.

The main entrée, baked ham, was prepared by Ray Dennis. He was also the generous donator of the ham. Covered dishes brought by members crowded the two long serving tables. Everyone enjoyed the wide range of dishes. Special accolades went to the donors of the pineapple filling and pumpkin cheese cake.

Betty Beck, once again, took on the task of compiling a book of members' recipes. It's the third year this limited edition LCPC item has been presented to Christmas party attendees.

Dede Schaeffer had four large boards with dozens of scarce and unusual cards that exemplified the many and various means of celebrating Christmas around the world - past and present. We were most grateful for these, as they prefaced her program, *Christmas Foods and Traditions*. Her 90+ slides were an array of colored magnificence! For a number of years, she and Daisy traveled to Europe carefully assembling what is considered by many to be one of the finest collections of Christmas postcards on the East Coast. Oohs and aahs echoed throughout the showing.

Jim Ward took a few minutes to acknowledge those in attendance who contributed to the 2003 edition of The Card. (See list elsewhere.)

Bryan (Mr. Horticulture) Benner was responsible for the 15 beautiful poinsettias that adorned the tables. These and surprise presents offered by Charlie Heim and Jim Ward served as door prizes for the evening.

Our thanks go to all who participated.

Monthly Competition - 2004 Schedule

Ruth Moyer, who chairs the Monthly Card Competition Committee, offers the following as a tentative listing of monthly topics for the year 2004 -
 January - Winter sports, activities, scenes a board
 February - Valentines a board
 March - The color green a single card
 April - April Fool a single card
 May - Flowers a board
 June - The U. S. Flag a single card
 July - Potpourri (your choice of subject) a board
 August - The most interesting Add-On a single card
 September - Music (bands, etc.) a board
 October - Bats or owls a single card
 November - Objects with the letter T a board
 December - Christmas Interiors - trees a single card

If you get to the meeting early, Harold Moyer can always use a helping hand assembling the giant easel. Do your part and give a hand. *At this writing (12/30/03) Harold is recuperating from a slight stroke. He is in our prayers and we hope he has a quick recovery.*

The Railroad Press -

Magazine and Postcard Publisher

Since the club's inception, your editor has relied on Bill Seigford, our in-house railroader - to keep us on track about everything that rolls on steel. Bill informs us that there's a new publisher of postcards in Hanover, PA.

Jaimie F. M. Serensits publishes *The Railroad Press Magazine*. He has also published numerous books on railroad history, all lavishly illustrated with photos of trains. His latest projects include two sets of full color regular size postcards. You may still be able to order Vol. I, No. 1-3, but its Vol. II, that includes 10 cards, which goes on sale this month. The series is a limited run of 1,000 cards.

The TRP Transportation Series Vol. 2 sells for \$10 plus postage and includes:

Pennsylvania Railroad freight on Rockville Bridge

Union Pacific powering a trailer train

Jet taking off into sunset over St. Louis*

Denver & Rio Grande Western at Salt Lake City

KC135 tanker approaching Battle Creek runway*

Illinois Central Bicentennial at Rockford, IL

Burlington Northern in snow at La Porte, IN

Delta Air Lines MD-88 taking off at Covington, KY*

USAF C-9C painted in colors of Air Force II*Asiana

TRP magazine has quickly become one of the most popular national train publications while winning graphic arts awards for outstanding print quality.

Check out the TRP website at www.alco628.com or contact Serensits at P.O.Box 444, Hanover, PA 17331. Ph. 1-717-637-3852 or 1-717-632-7312.



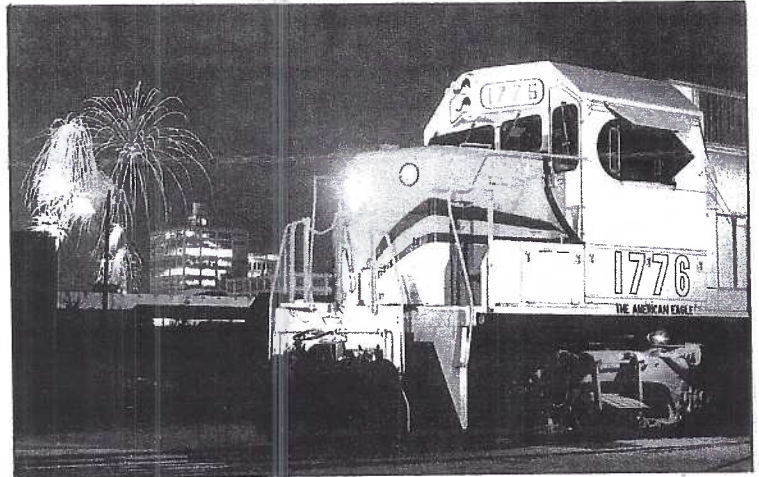
Asian Cargo 747 and Canadian Pacific



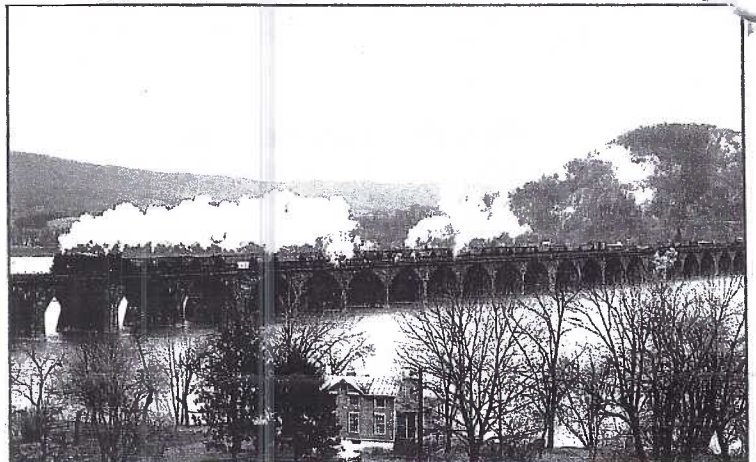
Union Pacific

Tentative Programs for 2004

Jan.	Member participation, a single card = the number 4
Feb.	"X marks the Spot" (Jim Ward)
Mar.	Special auction of greeting postcards
Apr.	"Wrascally Wabbits" (Dede Schaeffer)
May	Free-for-All (members sell and trade PCs, paper items)
Jun.	Annual picnic
Jul.	Hints on How to Prepare Postcard Exhibit Boards
Aug.	"Ephrata Cloisters" (Mike Middleton)
Sept.	Member participation, show 'n tell at round tables
Oct.	Annual auction
Nov.	"Linen Postcards" (Mark Werther, guest author)
Dec.	Christmas party, "Poinsettias" (Bryan Benner)



Illinois Central Bicentennial



Pennsylvania Railroad at Rockville Bridge



Denver & Grande Western

Cover Cards

Top row: Quadruplets (?), in diff. colored suits of the same style, skate in unison across a pond, on a card with a French New Year greeting. The p/u (postally used) card is #589 by A & M, Berlin publishers.

A young lady, in silhouette, serves a New Year drink on this stylized blue and black card from an unidentified Ger. publisher. "New Year cheers!"

Center row: "Greetings"(for) 1904 shows three views of Speyer on the Rhine. The town is west of Heidelberg, Germany. Publ. by Bruno Scholz, Strassburg.

Master New Year leads a Good Luck pig with his girl friend astride. In addition to pigs, 4-leaf clovers and mushrooms are considered signs of good luck. The multi-lingual back offers no clue to the country of origin, nor does the front caption. Any guesses??

Baby New Year finds himself dwarfed by clothes that won't fit him for another six months on this cute card from the Netherlands. K.L.Links is likely Dutch, though your ed. has found no specific reference.

Bottom Row: A distinguished lady, "dressed to the nines" adorns a US photo card, hand-tinted in red, white and blue. P/u on Dec. 29, 1913. "May the coming year, 1914, bring you nothing but happiness and prosperity."

A delightfully polite gentleman would enhance anyone's snowmen collection. And he doesn't appear a bit uneasy even with the bird perched on his head. P/u but the removed stamp took with it the cancellation. The message is in German. No publisher identified.

January Birthday

Don't forget our club's annual birthday celebration – a giant cake for everyone to share at the January meeting. It's our 14th birthday!!



This is a mate to the New Year card on page 2. It's another in the series #1470 by Theodore Stroefer of Nürnberg, Arthur Thiele's signature shows faintly near the lower left corner.

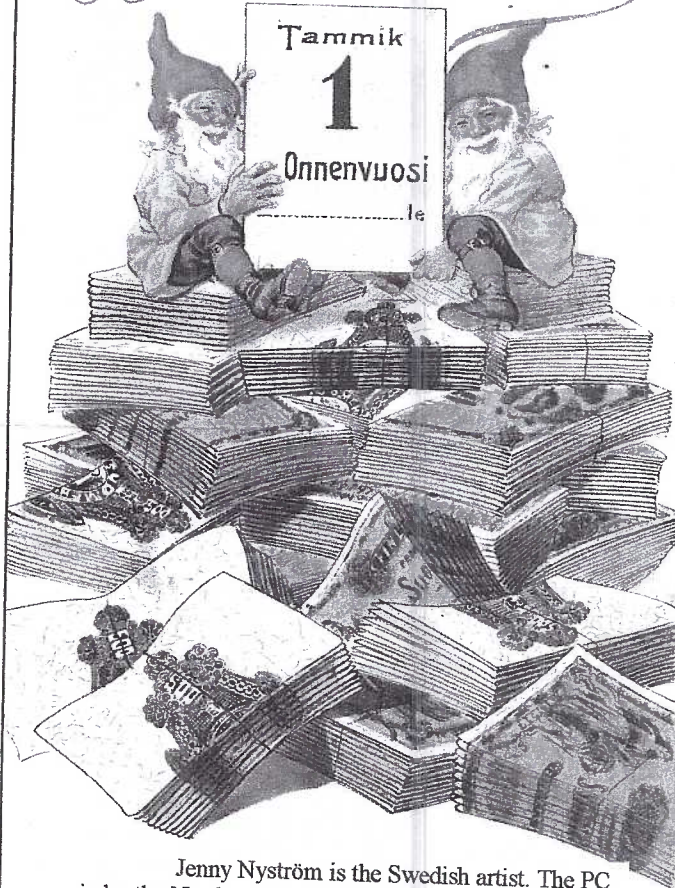
Hyvää uutta vuotta!

Tammik

1

Onnenvuosi

le



Jenny Nyström is the Swedish artist. The PC is by the Northern European Import Co., Duluth, MN and printed in Germany. The clues (with a magnifier) are Suo... and Fin...which would read Suomen Pankki and Finlands Bank and these are packs of 500 Markkaa. Which all translates to lots of success in the New Year.

Unsolicited comments from Journal subscribers -

"Another great issue. Keep up the great work."

Lee Brown, Sunland, CA

"I enjoy your publication very much and look forward with great anticipation to each issue."

Martin Bacharach, Hackensack, NJ

"I've really enjoyed your *Journal*, especially your descriptions of the unusual and hard-to-find cards."

Agnes Frizzell, Houston, TX

"Keep up the good work." Cliff McClain, Fairfax, VA

"Thank you for your hard work for *The Journal of the PHS*."

Linda Grable-Curtis, Meridian, ID

"Thoroughly enjoy *The Journal*. You do beautiful work."

Lincolnway Stamps, Massillon, OH

"*Journal of PHS* received last month. It was, as usual, an outstanding issue."

Evelyn Marshall, Tacoma, WA

"Enjoy reading *The Journal*. Payment enclosed."

Ted Levy, Old Saybrook, CT

"Thanks for the great info on postcards about The Toonerville Trolley folks."

Roy Nuhn, Sumpter, SC

"As an old retired history teacher, I really enjoy your material."

James Patterson, Lake Worth, FL

"Love your *Journal* and don't want to miss an issue!"

Mary Seymore, El Paso, TX

If you'd like to try a year, I'll include a copy of Dec. 2003 as an introductory 5th issue bonus. Send check for \$7 to Jim Ward, 1795 Kleinfeltersville Rd., Stevens, PA 17578-9669. Thank you.

Contributors to The Card

The Card's editor, Jim Ward, reminds our club's members that their monthly newsletter/bulletin would be lackluster without contributions from its members. This year's annual commendations found three members offering four complete articles – a record for one year (and most gratifying to the editor).

Minor contributions are just as important and deserving of the annual Reward of Merit. The following members have helped make *The Card* one of the country's outstanding postcard newsletters – so say others. To the following members go our thanks for a job well done.

Reward of Merit Recipients for 2003

JANUARY

Dot Fry – cards by local artist, Evelyn Favuz

Christian Shenk (non-member) – Ridgeway Tour postcards

FEBRUARY

Mary and Win Schurz – contributing 300 postcard inserts

MARCH

Bryan Benner – Article: Blanche Nevin, sculptor and PC checklist

APRIL

Betty Davis – information about Columbian Exposition postcards

MAY

Bob Shirk – publishing set of 40 local covered bridge PCs and contributing 300 postcard inserts

JUNE

Sharon Gromis – contribution input into publishing St. Johns Episcopal Church set of six postcards

Esther Rebman – information about Rebman's Lancaster stores

JULY

Dede Schaeffer – Article: Patriotic stamp booklet by USPS

AUGUST

John Klein – additional information concerning Zinn's Diner

OCTOBER

Bob Roop – for auctioning his panorama view of Penn Square (so your editor had a chance to buy it)

NOVEMBER

Bryan Benner – Article: 150th Anniversary of Franklin & Marshall College and PC checklist

DECEMBER

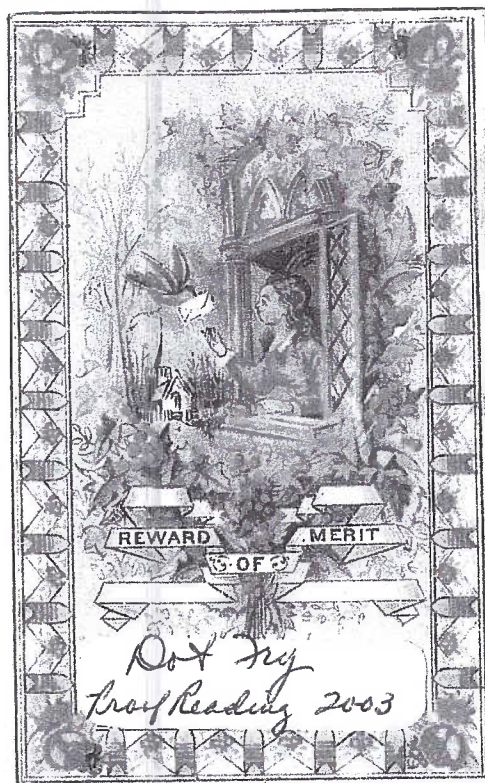
Gerald Lestz – Article: Charles Demuth and Postcards

Carol Giona – publishing a card commemorating her 50 years in the hobby

Frederick Yohe – additions to his growing list of published hand-drawn and colored PCs

Bill Agard – publishing and contributing 300 insert cards commemorating the 100th anniversary of flight

Not to be over-looked are the proof readers, **Dot Fry** and **Betty Beck** and the Mailing Committee – **Gwyn Fulmer**, and **Ruth and Harold Moyer**.



About Our Members

They've hardly been gone two months and some of us miss them already. If you'd like to write to **Mary Ann and Bill Guntow**, members #447 and 448, you can reach them at 6255 Blauer Lane, San Jose, CA 95135. We wish them well and hope they can find a postcard club near their new home.

Although they were never at our meetings, we did occasionally get to see **Russ and Martha Holmes**, members #81 and #82, at local shows. Martha died quite suddenly as the result of a fall when leaving church. She had been the long-time editor of the Theo. Burr Covered Bridge Society's newsletter. Russ was the society's treasurer for many, many years.

Our deepest sympathy goes to Russ and his family. We hope to see him soon back on the covered bridge trail. He and Martha were regulars on the local CB safaris. They even traveled to Europe to photograph covered bridges on that continent.

Member #710, **Margaret Claire**, dropped a note to remind us that she's been collecting since 1980 and likes PA and NJ views incl. Trappe, Worcester, Sellersville, Perkasio, Willow Grove, Pittman, Vine-land, Mullica Hill, Highlands and many more. She also sells cards at The Trading Post, Rte. 413, South Wrightstown, PA, from 10 to 5.

FOR SALE

Complete postcard collection
of Harry and Ruth Lines,
LCPC members #47 and #114.

OVER 7,000 Postcards

Including Lancaster City and County
Lincoln Hwy., Covered Bridges

Queen Anne's Doll House, and much more.

History of LCPC, The Card from Vol. 1, #1 to date.

For catalogue, inspection, information

Call 1-717-569-2080.

Here's the succession of LCPC
presidents for the first fourteen
years of our club's existence.

1990	Jim Ward
1991	Earl Carver
1992	Dot Fry
1993	Don Davis
1994	Walt Mowrer
1995	Bob Kramer
1996	Lewis Bechtold
1997	Ruth Frankouser
1998	Jim Ward
1999	Susan Glass
2000	Walt Mowrer
2001	Betty Beck
2002	Tom Beck
2003	Bryan Benner
2004	Doug Milliken