

# THE CARD - Vol. 15, No. 4. Issue 172. April 2004.

Monthly Publication of the Lancaster County Postcard Club, Lancaster, PA.

*Enjoying postcards through education and entertainment.*

Next Meeting: Mon., Apr. 19, 2004. Farm & Home Center. Buy, sell, trade from 5:30. Meeting at 7 p.m.

Club and Editor's address: LCPC c/o Jim Ward, 1795 Kleinfeltersville Rd., Stevens, PA. 17578-9669 or [midcreek@ptd.net](mailto:midcreek@ptd.net).

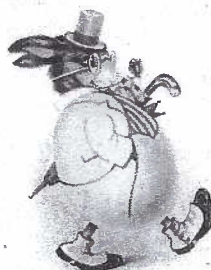
Club website: [www.playle.com/clubs/lancaster](http://www.playle.com/clubs/lancaster) or Google search: lancaster county postcard club



Herzliche Ostergrüße!



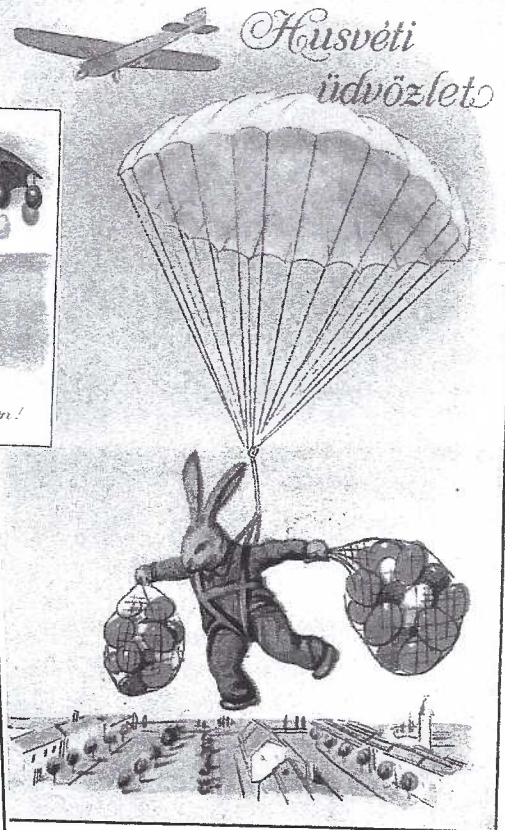
Es ist so schön gewesen  
mit dir zu sein.  
Du hast mich sehr ge-  
lächelt.



Priestgas Lieldienas  
svētkus!



Fröhliche Ostern!



Fritz Springinsfeld  
Kunstmalerei

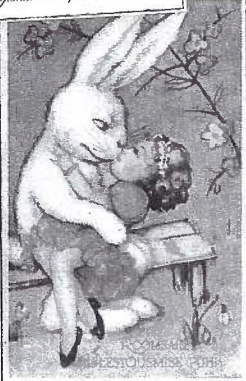
Joyeuses  
Pâques!



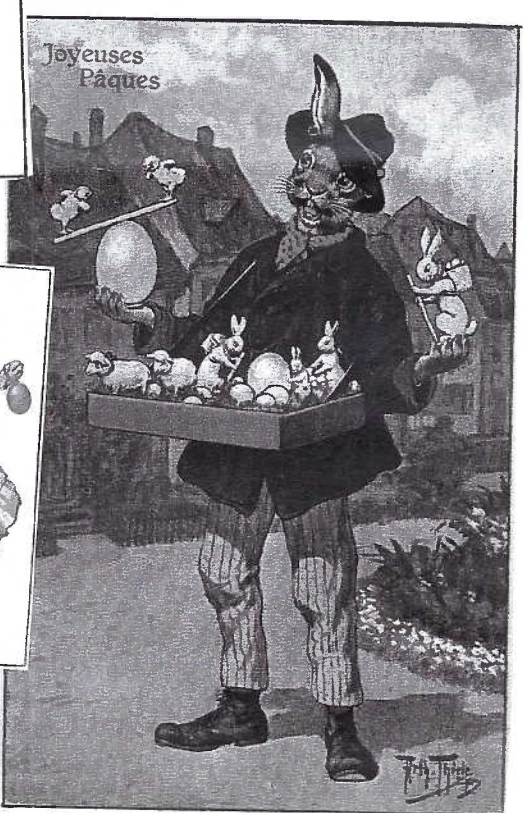
**"Wascally Wabbits"  
April's Slide Program by  
Dede Schaeffer**



Spencer's Postcard



Fröhliche Ostern



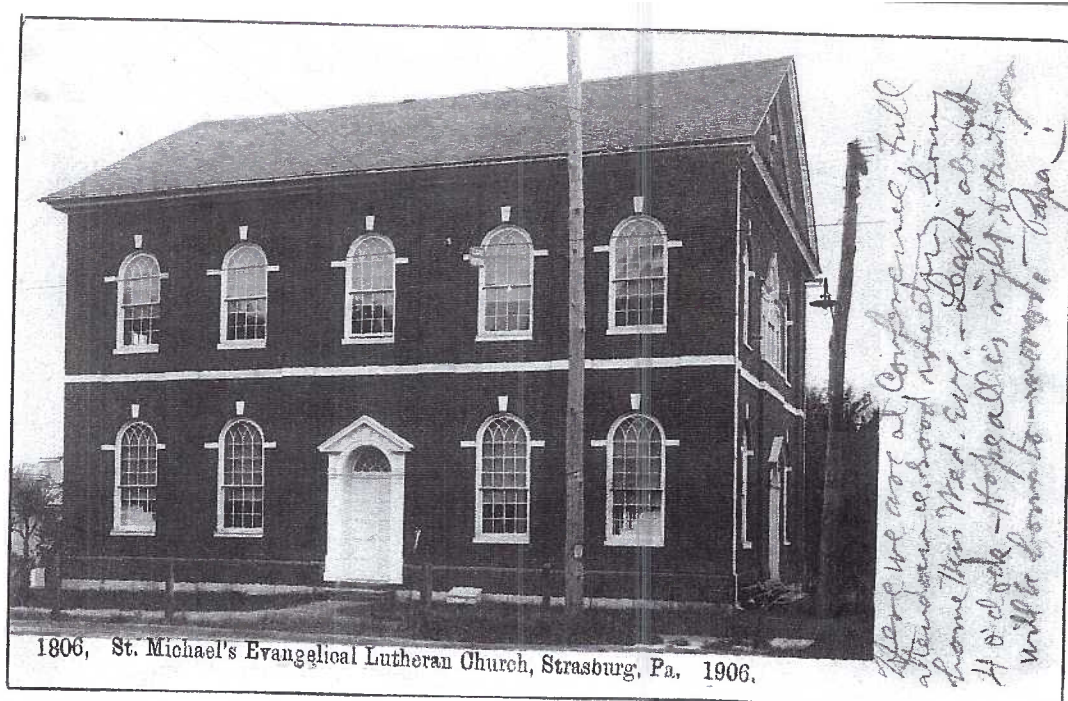


## 250 Years Strasburg's St. Michael's Reaches A Major Milestone.

On January 5, 1754 members of St. Michael's met and worshiped in a small log building known locally as "the Old Dutch Church."

The brick Romanesque building, right, was featured on the real photo anniversary PC printed in 1906. The edifice was supposedly based on Lancaster's Trinity Lutheran Church.

The p/u card was mailed to Allentown, PA in 1907.



1806, St. Michael's Evangelical Lutheran Church, Strasburg, Pa. 1906.



Old Communion Service of St. Michael's Lutheran Church, Strasburg, Pa.

From a postcard collector's viewpoint, St. Michael's is blessed with at least a dozen views, printed and real photo.

The second RP card with an Artura stamp box (1910-1924) is not postally used (p/u). It features a set of pewter Communion and baptismal pieces purchased by the congregation in 1780 and made by Wm. Will of Philadelphia and Christoph Heyne of Lancaster. According to the New Era, Donald Herr, a local expert, considers it "one of the finest baptismal Communion services in PA German churches."

Editor's Note: Carol Giona heads our club's Library Team this year. She has offered to write a column about books in the LCPC library for *The Card*.

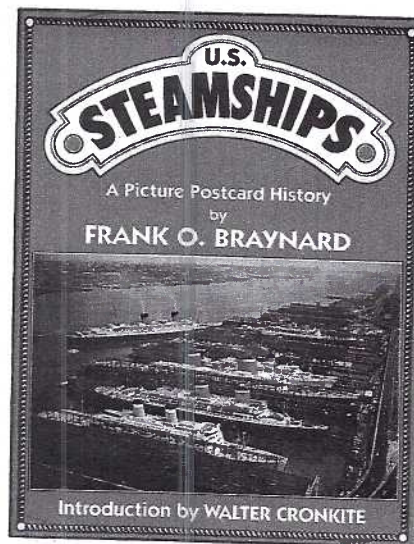
### **Library Highlight** **U. S. Steamships**

By Frank O. Braynard

This unique book is a picture postcard history of American passenger carrying ships of all types, in all U. S. coastal areas. There are 200 illustrations of postcards.

Some of the cards are quite rare. All are reproduced in actual size - in black and white - except those reproduced in color on the front and back covers. Self-propelled ships are included such as ferries, luxurious Great Lakes passenger boats, excursion steamers, great white Fall River Line overnight boats, and a few trans-Atlantic liners.

The postcards are primarily photographs showing artist's conceptions, reproductions of paintings, and drawings. Each card includes a caption with historical facts, technical information, and anecdotal material.



If you would like to borrow this book, please call library team co-coordinator, Carol Giona, 1-717-464-1410.

Postcards included with this issue of *The Card* were donated by member #168, Norman Zimmerman. If you have "extras" in large quantity, we'd be happy to share them with our readers. They may be different subjects and should total 325. Thanks.



## COVER CARDS and APRIL PROGRAM

We can always expect to see amazing postcards when Dede Schaeffer offers the program. April's *Wascally Wabbits* will be no exception. Your editor had a pleasurable preview of the images while making slides for Dede. The rabbits are tremendous!

Only recently was I aware that Rabbits was the topic that started Dede collecting postcards. You can only imagine the unusual images you'll see at April's meeting. This month's cover is 'loaded' because it was difficult to stop choosing, even at a dozen images.

### COVER CARDS -

**Top row, left to right:** Cyclist, #14069, unknown Holland publisher; Dancers, d/b card with German Feldpost cancel; Eggshell Suit, 1928 cancel from Rega, Latvia; Egg Adorned Umbrella, another d/b Latvian PC, #1068; Parachutist, d/b mailed from Hungary to Chicago in 1920.

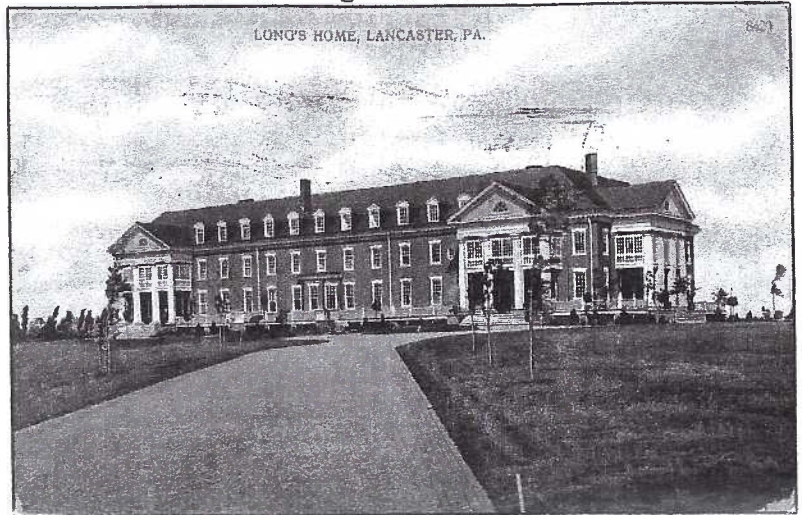
**Middle row, left to right:** Rabbit artist, an early u/b mailed Easter, 1905. Was "Fritz Springinsfeld, Artist" the actual artist for the postcard? Outlandish Easter Bonnet by Arthur Thiele, d/b, #1449 of a 6 design set.

**Bottom row, left to right:** Uncle Sam carrying as Easter cone. The design is highly embossed with silk appliqué, d/b; Smoochers, Russian d/b, mailed Easter, 1906; Fantasy Lovers, mailed Easter, 1936, from Estonia; Scurrying well-dressed lady, German publisher - HWB(?), series #9408. Dede said the dress always reminded Daisy of a cabbage. Toy vendor, another excellent card by Arthur Thiele, #1354 of 4 designs, d/b, mailed in March, 1913.



The QUAIN AMISH FARMING PEOPLE  
of the wealthiest Farming Community in America  
Lancaster County, Pennsylvania  
A County that does not have a dollar of debt

## It Pays to Read the BACK... Local Messages on Postcards.



Feb. 10, 1910, Lanc. to York, PA.

Dear Babe, Arrived all safe. What do you think of this for a long home? Looks inviting. Suppose you have heard of our big fair.

Oct. 1906. Lanc. to Buffalo, NY.

The bldg. to the right of the street with the 2 towers on, is our Woolworth bldg., the finest one Mr. Woolworth has. I suppose you now he started in Lancaster. I would be pleased to hear from you.

June 1907. Lanc. to Emmitsburg, MD.

I just came from Mass at a German church. Did not understand a word.

Mar. 1915. Gordonville to Lizzie Dull, Quarryville.

Well Lizzie, I can't come down this week for he is killing his beef tomorrow and he has two hogs to kill yet and then it will take lots of frying for its getting late to have so much meat. She wants me to help her fry it up. I suppose I will come down next week if nothing takes place and she is well. She has no girl now. She left today and I don't like to go when she is alone. Good bye, Mother.

### Remember When...

#### A County that does not have a dollar of debt.

One of the most popular hotels in Lancaster City in the 1940s was the Stevens House. Among its PC issues was a set of six "historic and picturesque" postcards including several featuring Amish.

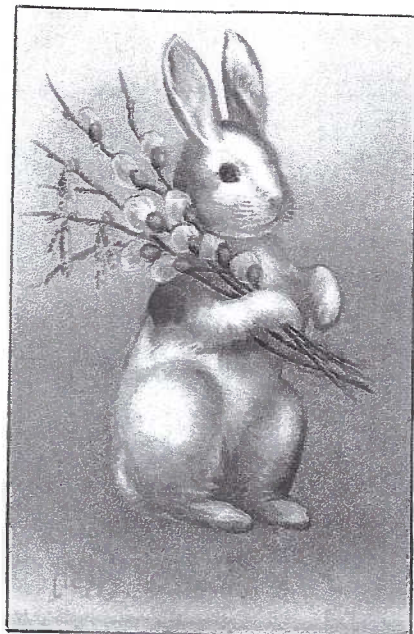
The hotel chose a view of an Amish family known for their frugality to emphasize the financial status of the then debt-free county.

**The Quaint Amish Farming People of the wealthiest farming community in America, Lancaster County, Pennsylvania. A County that does not have a dollar of debt."**

Recent newspaper headlines are loaded with convention center dreams, a ballpark, and a school district's finances gone amok. Postcards truly convey history.

**OOPS!** His copy of the March *Card* was barely out of the envelope when eagle-eye Bud Prowell, member #413 and a Hershey resident, was quick to notice the article about the new Hershey theater cards had a major typo. The new theater has a 1904-seating capacity, not 104 as reported. Thanks Bud.





## Alley Schwentz (alder catkins)

One of the many enjoyable aspects of collecting postcards is the variety of topics they offer.

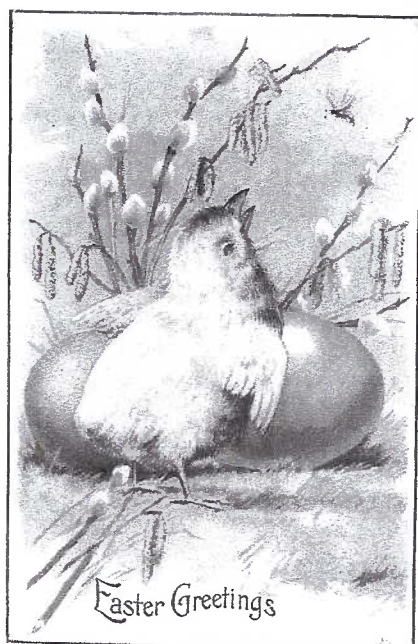
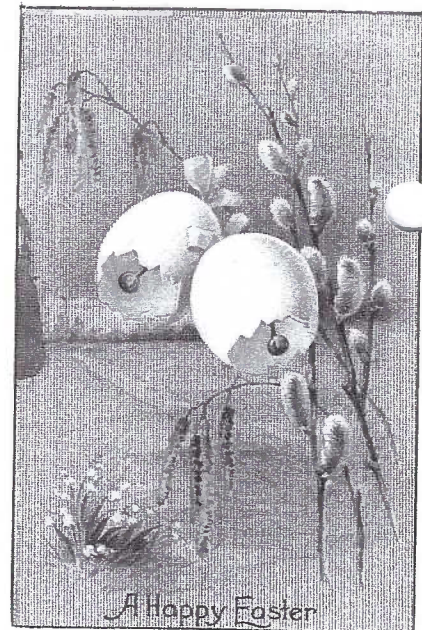
Your editor and member #260, Jim Morrison, were recently enlightened by a Berks County Dutchman looking for *alley schwentz* on Easter postcards. Lester Breininger, the talented potter who lives in Robesonia (and a close friend of Jim's), told us about those little flower heads\* that bloom in the spring – the same time as pussy willows.

Lester reminded us that these catkins were often boiled to make a greenish yellow dye for Easter eggs, just as dried outer skins of onions produce a red brown. Walnut hulls produce a dull brown dye and fresh wheat or barley leaves a light green. Such home made concoctions would eventually be eclipsed by Hinkle's Easter Egg Dyes and the like.

Shown here are examples of Easter PCs, all with *alley schwentz* (alder tails). On one card, the little boy is able to support himself on a branch. Alders seldom grow taller than 20 feet; most look like bushes.

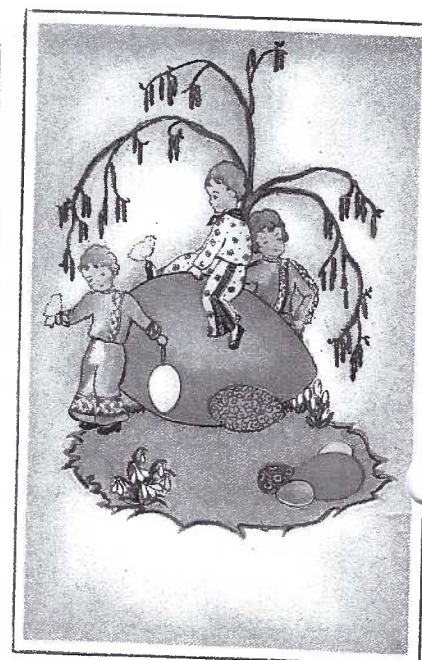
Berks County lore tells of a father, who, many years ago, walked through a meadow with his 10-year old daughter. Little Lillie was attracted to the alder catkins. Her father told her the Oschter Hass (Easter rabbit) used them to color eggs. The little girl inferred that he used them as paintbrushes and later checked to see if he had left any behind for her to find. Lillie Merkle George, in time, realized the *alley schwentz* could be used as an egg dye. This meadow walk is the earliest recollection she has of her father.

\* Botanically speaking, the hanging catkins are the male flowers. They carry the pollen. The female counterparts are smaller, erect clusters on the same branches. Many of our readers are acquainted with similar catkins on sweet birch trees. Our northern neighbors find catkins on river birches.

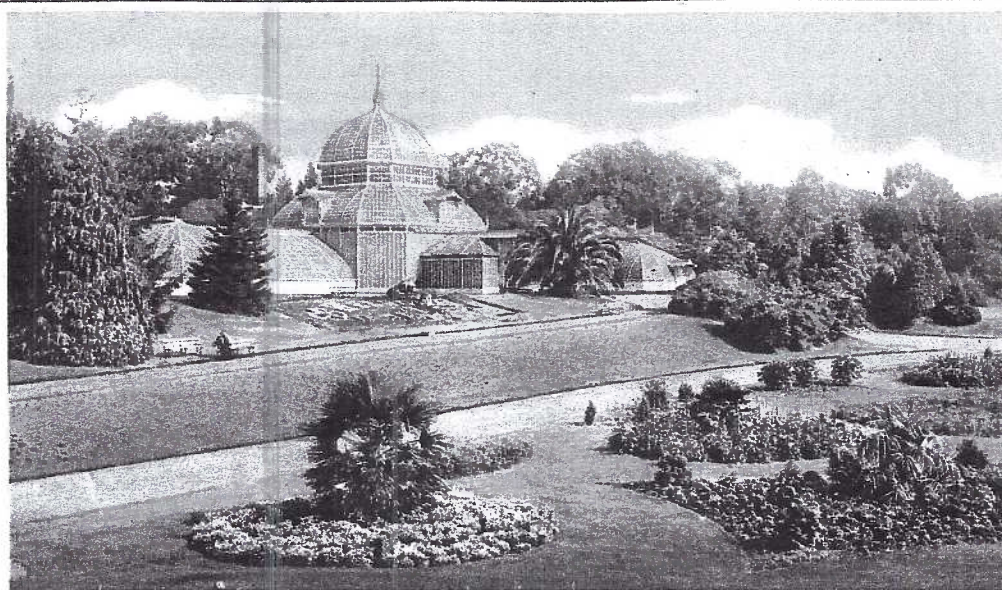


Top corners and lower right corner are PCs by International Art Publ. Co. The center left PC is by Stecher from Series 308.

Have fun looking for a new postcard topic! Your editor and Lester are both interested in adding more *alley schwentz* cards to their collections if you have any to sell..







8199. CONSERVATORY, GOLDEN GATE PARK, SAN FRANCISCO, CAL.

Copyright, 1904, by Detroit Photographic Co.

## GOLDEN GATE PARK CONSERVATORY IN BLOOM AGAIN

By Bryan Benner, LCPC past president

San Francisco's Golden Gate Park Conservatory reopened in 2003 after a \$25-million restoration. The history of the magnificent and mammoth 'glasshouse', the oldest public conservatory in the Western Hemisphere, begins all the way back in 1876. When San Jose real estate magnate James Lick died, the prefabricated conservatory, still in crates, was found among the effects at his Santa Clara Valley estate. The following year, the conservatory was bought by prominent businessmen and donated to the Park Commission which erected it in 1878-79.

During the next 126 years the conservatory had various highs and lows. In 1883, the main dome was destroyed by fire; in 1915 the conservatory helped entertain the world during the Panama-Pacific International Exposition; in 1918 another blaze damaged the dome and potting room; in 1933 it was closed because of structural problems; in 1946 it was restored and reopened to the public.

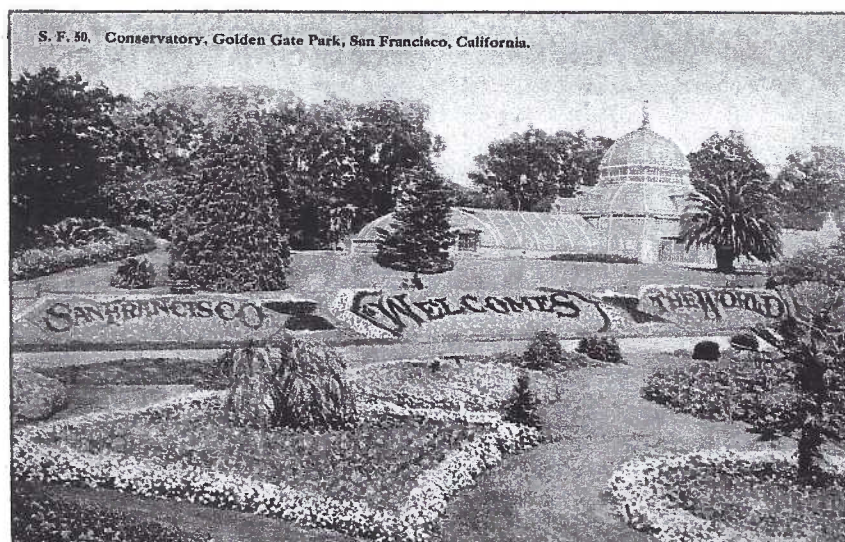
From 1946 until 1995, the conservatory remained in use until a Pacific storm with more than 100 mph winds battered the building, forcing it to close in 1995. Some 40 percent of the 16,800 glass windowpanes had been destroyed, several wood sections were damaged and a significant portion of its plants were lost. Then the huge restoration project began, taking three years to complete.

The conservatory is considered an architectural treasure. It is on the National Register of Historical Places among other designations. Historical restoration was implemented salvaging 70 percent of the wood window frames and 90 percent of the decorative elements.

Today, 1,500 species of plants from more than 50 countries take up residence in the 12,000 sq. ft. Victorian jewel; among them is a century old giant philodendron that survived the fires and storm, a world famous collection of Dracula orchids (the toothed flowers give them their name), a display of Victorian potted plants, and collections of mosses, ferns, vines and trees from the tropics.

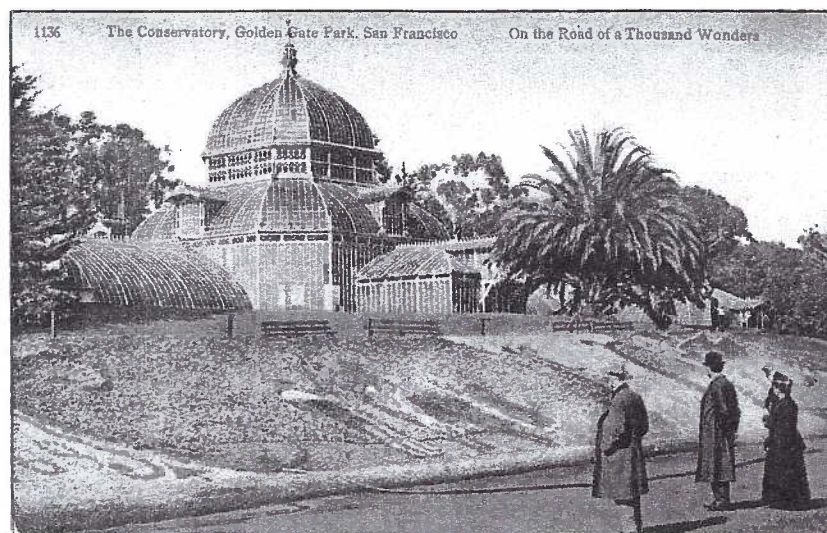
The restored conservatory is picture postcard perfect and it can be found on cards from all postcard printing periods.

#8199 by Detroit Photographic Co. Undivided back.



S. F. 50. Conservatory, Golden Gate Park, San Francisco, California.

"San Francisco Welcomes the World" in a floral display on d/b card #50 by Cardinell Vincent Co., S.F.



1136 The Conservatory, Golden Gate Park, San Francisco On the Road of a Thousand Wonders

A floral display from "On the Road of a Thousand Wonders." Cardinell Vincent Co. card #1136, d/b.



## March Meeting

Set up and selling in March were Dede Schaeffer, Jim Ward, Ruth and Harold Moyer, Jere Greider, Norman Zimmerman, Al Schaub, Howard Steinberg, Dick Bishop, and Mike Middleton and there was still room to squeeze in a table for the 41 auction lots of greeting cards\*.

Door prizes were a panoramic photo reproducing a 1910 Christmas postcard view of the Penn Square, and a home-made bird house (courtesy of Jim Ward). Sam Nolt and Carol Giona were the recipients. Keith Gromis won \$33 in the 50/50. (That'll buy a lot more pencils, Keith.)

\* Only a handful of members stayed to bid on "lower end" greetings, some going for as little as 1 cent each in lots of 75 to 100. Where were you?

## National Postcard Week Selection

Each year LCPC publishes its own postcard to celebrate NPW. The first full week in May is set aside to publicize postcard collecting across the nation. Our club exchanges postcards with other clubs and individuals. Each club member will receive a free LCPC NPW card with the May issue of *The Card*. Extras may be purchased at the club desk; details later.

Why not try one yourself? With the help of a computer (or your own artistry), or using an old postcard view, you can make your own NPW card. The only requirements are: include on the front "NPW" or "National Postcard Week" and the date, May 2 - 8, 2004. We will publish members' cards in the May issue of *The Card*.

Brian Frankhouser and his research committee had narrowed a field of possible local anniversary celebrations to three. These he presented to the membership for consideration. They were: PRR station in the north end of Lancaster (75 yrs.), the formation of Lancaster County (275 yrs.) and Stevens High School (100 yrs.) Tom Beck suggested Stevens Technical College, but the school's premature celebration (beginning in 2004) suggested it be a better candidate for next year. A hand-drawn colored Fraktur celebrating the County's anniversary has been executed by Bryan Benner. Each subscription to the May *Card* will have a free postcard. Details will be in the May issue.

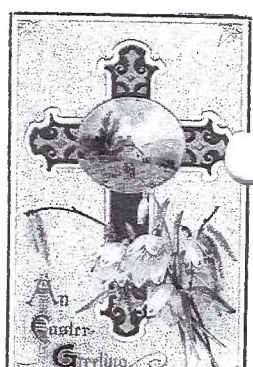
## Future Shows

Apr. 2, 3 Havre de Grace, MD Martin Spring Chesapeake Show. Community Center.

Apr. 23, 24, 25 Extravaganza Week-End. Adamstown, PA. Many sites open incl. new German Trading Post where LCPC members Ruth and Harold Moyer and Jim Ward have set-ups.

Apr. 24, 25 Allentown, PA. Book, Antique and Paper Show. Fairgrounds.

In case you forgot vat alley schwentz are still, here's some. See onct, that one is for New Years (when some people believed Spring Time was the beginning of it all).



## March Competition.

Sixty members enjoyed a decidedly GREEN evening with single cards from 14 entries. It should be noted that Ruth Moyer will happily read any notes you might have about your postcard if you submit them to her beforehand on a 3" x 5" card. It was evident in March's competition that such a card helped some, and the lack of an info card hindered others from winning the Big Bucks. (1st place = \$3, 2nd = \$2, 3rd = \$1.)

**Jim Ward** FIRST St. Patrick's Day Souvenir  
**Harold Moyer** SECOND Wearing of the Green  
**Ray Dennis** THIRD Uncle Sam and an Irishman

## Honorable Mentions

**Tom Beck** Let Erin Remember  
**Carolyn Middleton** Three of a Kind (kittens)  
**Dick Pendergrast** A Ship at Greenland  
**Walter Mowrer** Wearing of the Green  
**Betty Beck** Parade in Emerald City  
**Ruth Moyer** To My Own Little Colleen  
**Dede Schaeffer** A Colorful Crocheted Craft  
**Carol Dennis** Let's Dance on the Green  
**Mary Darrenkamp** Please write before I Croak (frog)  
**Doug Milliken** Hotel Greene (A double card)  
**Carol Giona** St. Patrick's Day  
April's topic is April Fool on a single card.

## Revised Programs for 2004

**April** - Wascally Wabbits (Dede Schaeffer)  
**May** - Free-for-All (Members buy, sell and trade PCs and paper items; maximum 1- 8 ft. table per member).  
**Silent Auction** (Donated books and paper items).  
**June\*** - Ephrata Cloisters (Mike Middleton)  
**July** - Hints on How to Prepare PC Exhibit Boards  
**August\*** - Annual Picnic (Sunday, the day after the LCPC Expo, at Jim Ward's home)  
**Sept.** - Show 'n Tell (Member participation)  
**Oct.** - Annual Auction (Max. ten lots per member)  
**Nov.** - Linen Postcards (Mark Werther, guest speaker)  
**Dec.** - Poinsettias (Bryan Benner) at Christmas Party

## New Members

**#724 Lester Flory** 1021 Hemlock Circle, Manheim, PA 17545. Ph. 717-665-5624. General PC interest.

**#725 Raymond Zwolenski**, husband of Doris. 71 Boardman Ave., Cumberland, RI, 02864-3704.

**#726 Keith Gromis** 632 Eastside Dr., Landisville, PA 17538. Ph. 717-892-6864. Keith is the 13-yr. old son of VP Sharon and already part of the club's work force. He's in charge of the 10¢ PC box at the club table. Keith collects local views.

**#727 Alan Gottlieb**, P.O.Box 35, Rock Hill, NY 12775. Alan is the son of Marilyn and Howie G. and is helping his parents who are dealers at our Expo.

