

THE CARD - Vol. 15, No. 9. Issue 177. September 2004.

Monthly Publication of the Lancaster County Postcard Club, Lancaster, PA.

Enjoying postcards through education and entertainment.

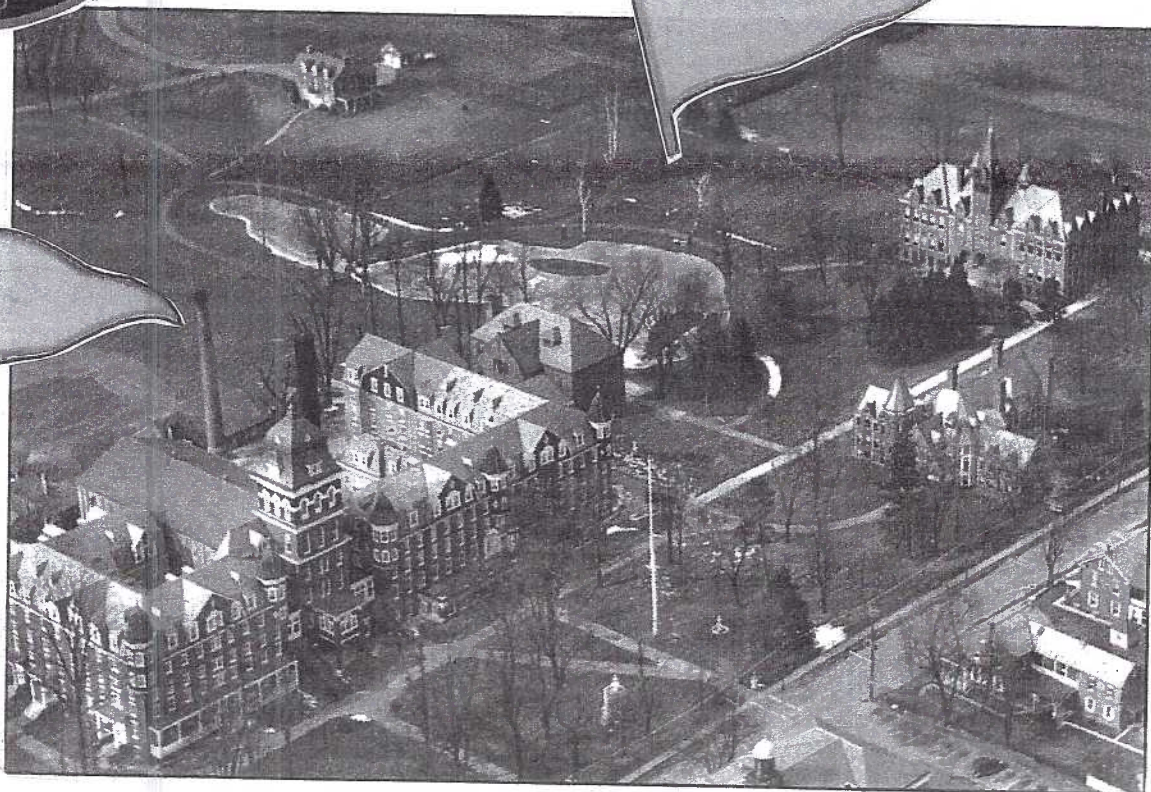
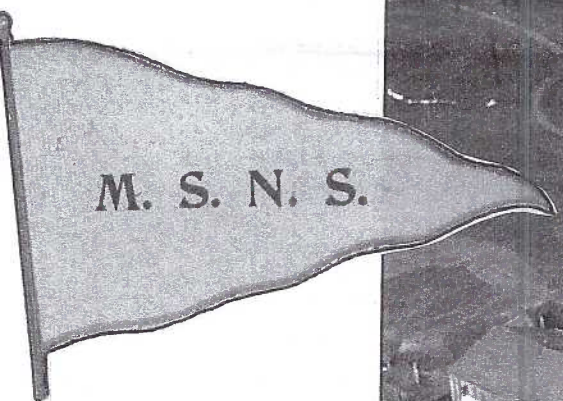
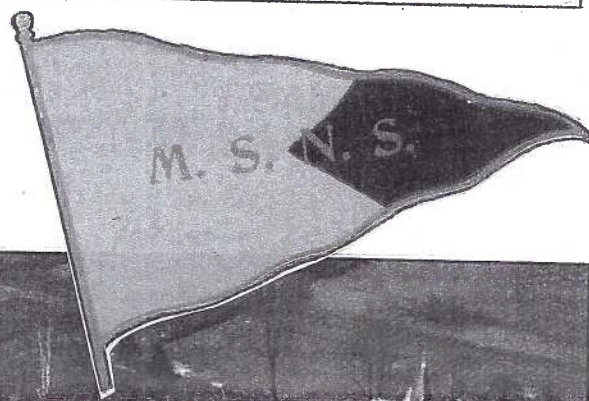
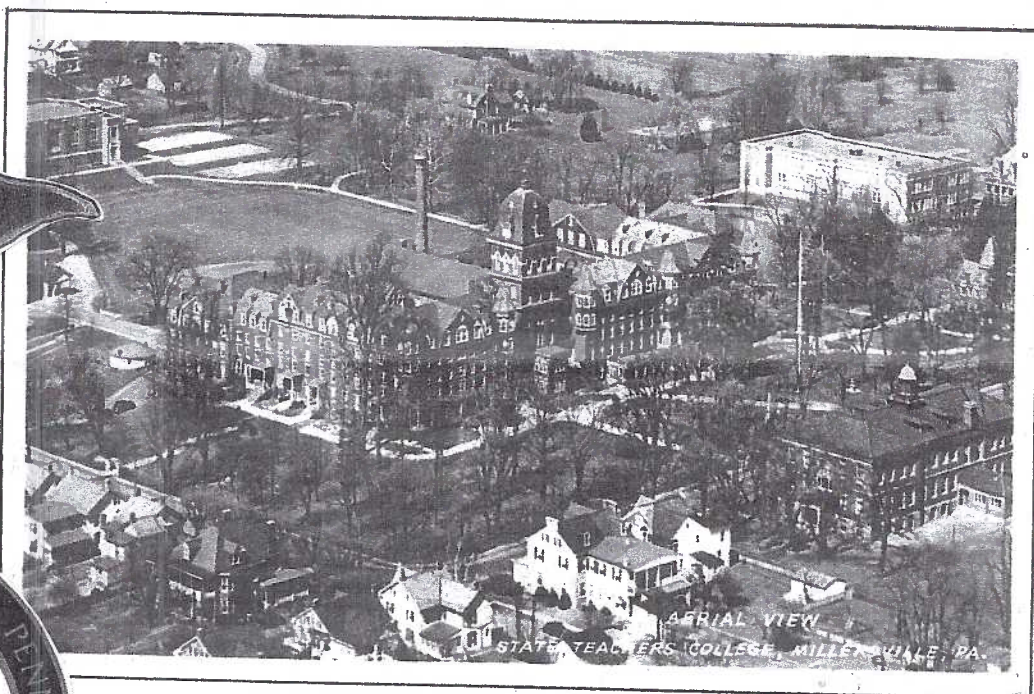
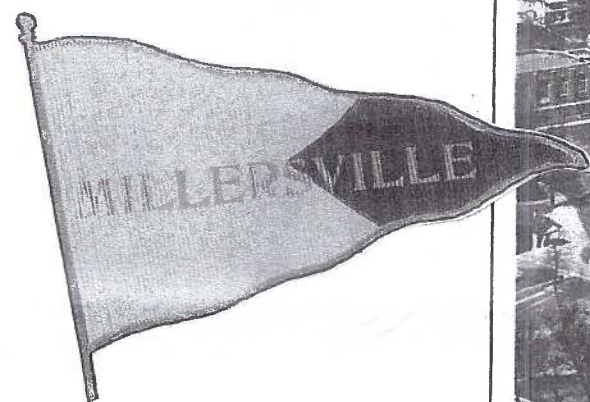
Next Meeting: Mon., Sept. 20, 2004. Farm & Home Center. Buy, sell, trade from 5:30. Meeting at 7 p.m.

Yearly membership is \$10 (\$5 for each additional member at the same address.)

Make checks payable to LCPC and send to Betty Beck, 11 Cinder Hill Rd., Lititz, PA 17543.

Club and Editor's address: LCPC c/o Jim Ward, 1795 Kleinfeltersville Rd., Stevens, PA. 17578-9669 or midcreek@ptd.net.

Club website: www.playle.com/clubs/lancaster or Google search: lancaster county postcard club



Expo Exhibit Results

There was that first Expo in 1993 when we had nearly 100 exhibit boards. Those good old days are evidently gone. Given the quality of this year's boards, we should be grateful for 35 we could enjoy. A perennial winner of **Best of Show**, Dolores Rowe once again walked away with that award with her exhibit, 9 to 5. **Walter Mowrer's Real Photos of Columbia and Marietta** was honored with the **People's Choice** award.

Below are the participants in each of the four categories for 2004. Honorable Mentions are listed as received by the exhibit board committee.

Real Photo Postcards

Dolores Rowe	FIRST	9 to 5
Walter Mowrer	SECOND	Columbia and Marietta Real Photos
Ruth Moyer	THIRD	Early Tri-County Era
Bob Kramer		15 Minutes of Fame
Charlie Heim		Rare Scenes around Chickies Rock
Dede Schaeffer		Christmas in Black and White
Jim Ward		My First Horse, My Buddy
Harold Moyer		My Relatives
Donald Brown		Americans Diverse: A Mosaic

Publisher and Printers

Dede Schaeffer	FIRST	Raphael Tuck, Publisher Supreme
Dolores Rowe	SECOND	The Cards of W. H. Tegeler
Jim Ward	THIRD	James E. Hess
Bob Kramer		Christmas from International Art
Walter Mowrer		Columbia Views (by Zeamer)
Harold Moyer		State Capitols by Tuck
Ruth Moyer		L. H. Larsen, Publisher
Donald Brown		Beals (Printer) Des Moines, IA
Maria Schurz		Hummel

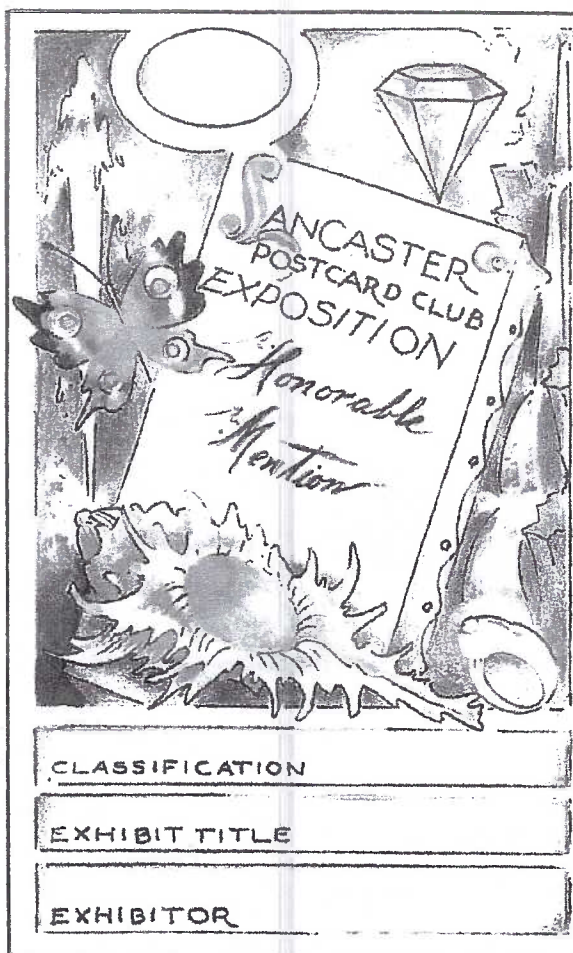
Animal Drawn (Conveyances)

Harold Moyer	FIRST	Early 1900s Transportation
Walter Mowrer	SECOND	Animal Drawn Carts & Wagons
Jim Ward	THIRD	Arctic Sleds
Dolores Rowe		A Holiday Menagerie
Steve Mummert		The Wheels Go 'round the World
Ruth Moyer		Horse Power

Historical

Barbara Heim	FIRST	Columbia's 1913 Old Home Week
Dolores Rowe	SECOND	Circus Days
Ruth Moyer	THIRD	Mt. Springs Summer Resort
Bob Kramer		Fly Me to the Moon
Walter Mowrer		Old Home Week Parade, Columbia 1912
Dede Schaeffer		B & O RR Centenary Exhibition & Pageant, 1927
Harold Moyer		100 Years Ago
Jim Ward		Armed Forces Training Sites
Donald Brown		The Nineteen Thirties
Maria Schurz		Manniken Pis
Win Schurz		Bones

Was Columbia's Old Home Week in 1912 or in 1913? Did it extend to both years?



LCPC Extends a Thank You to Many

Congratulations go to the winners and a Thank You to all who took the time and made the effort to participate. Special "Thank You" postcards were also given to the judges: dealers **Jose Rodriguez**, **Dale Biesecker** and **Bob Hollopetter** and guest **John Klein**.

An additional Thank You goes to member #66, **Jim Rudisill**, who designed a new full color expo exhibit postcard for us this year. The card displays a variety of postcard subjects with a gemstone above an art canvas. The stone sparkles as an emerald for Honorable Mention winners, as a yellow topaz for Third Place, a red garnet for Second Place, a blue Sapphire for First Place and a purple Amethyst for Best of Show, People's Choice and the judging award.

Of course, we should also extend thanks to Expo Chairman **Jere Greider** along with all the members who set up, tore down, wrote publicity articles and ads and aided in making the show a success.

Additional Comments.....

Though many will deny it, sales through the Internet via dealer websites, auctions and certainly E-bay, are taking their toll on shows. Most of us agree, however, nothing compares to having the postcard in hand, talking with the dealer, and making the purchase face to face. A room full of 25+ dealers, competitive prices and the camaraderie enjoyed among collectors and dealers can't be duplicated. In a nut shell, there will always be shows. Heavy rains (predicted) certainly played a part in the 2004 Expo. We had the lowest paid attendance ever - 237.

Did you know LCPC called its first show in 1993 an "expo" because it came 100 years after the Chicago Exposition and 60 years after the Chicago World's Fair and we emphasized exhibits? Somehow, the name "expo" stuck.

September's Cover Cards

Your editor often gleans information from *The Lancaster New Era* for his postcard stories. LCPC member #385, Jack Brubaker, a.k.a. The Scribbler is the *New Era* editor we can always count on for such articles and a recent essay about Millersville University celebrating its 150 anniversary was no exception.

Those of us who collect local views have accumulated nearly 100 cards of old MSTC and now MU. A considerable number of the older cards are real photo postcard views.

Why so many cards? Think about it. Institutions like colleges, hospitals and nursing homes have a large number of residents, most of whom are transient. This demands a continuous supply of short-note communication, ergo the postcard!

In recent years, two neat series have been published. The Millersville University Alumni Association published the first series of four full color, dated and numbered 4 x 6" postcards:

#1 1994 – The tower of Old Main was the focal point of campus... 1854 to 1970.

#2 1995 – Biemesderfer Executive Center, formerly the Old Library... 1895-1967.

#3 1996 – Dutcher Hall, formerly the Old Gym.... 1890-1951.

#4 1997 – The Lake, founded in 1894...

The second series of cards, also 4 x 6" were published by the MU for the Friends of Ganser Library. All b/w photograph images were provided by the Millersville University Archives in 2001.

#1 Aerial photograph of ...campus... 1935. This card appears at the bottom of the cover of the Sept. CARD. The smoke stack at the rear of Old Main should help you orient yourself in studying the two views. Also, the steeple of the Model School can be seen along the lower edge of the 1935 card, whereas it is easily seen on the entire building on the upper view. The upper view is a 3 1/2 x 5 1/2 b/w real photo view mailed in 1953 and probably was made shortly before that year.

#2 The 1908 Millersville State Normal School women's basketball team.

#3 Boys dormitory room at Millersville State Normal School circa 1908.

#4 The 1895 Millersville State Normal School football team.

#5 The Old Library building at Millersville State Normal School circa 1900.

#6 The Ladys' (sic) dormitory at Millersville State Normal School circa 1900.

#7 The tower of the Old Main building at Millersville State Normal School circa 1900.

Your editor thanks Harry Lines, LCPC #114 for both of the above series cards. If you have interest in these views, Harry suggests you contact the Ganser Library for the b/w cards. The color cards are long since sold out but Dick Bishop, who bought Harry's collection recently, may have a few sets of each. ↗

On the Mend...

We trust **John Rodkey** is recovering from his recent trip to the hospital. We've also been told **Miriam Bishop** had major surgery recently and we hope we'll see her at the meetings soon. She and Dick have attended faithfully for years.

And now to the remaining postcards on our cover...

The pre-World War I school years saw a rage of pennants. Tied to a stick or thin cane, fans waved them over their heads at football games. Crowds waved them at political rallies. Throngs waved them along the curbside as bands paraded through town. All three of the different pennant postcards used here are by the same publisher identified only as "H. J. F." with an accompanying 1907 copyright.

We see here just the central figure on each card – a pennant with different colors, initials or name. Why three different designs? Was there a competition afoot on campus? The undivided back cards were all mailed from Millersville.

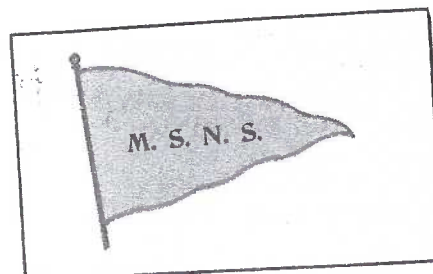
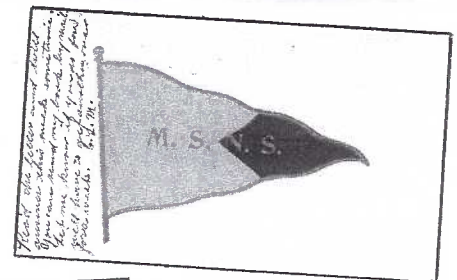
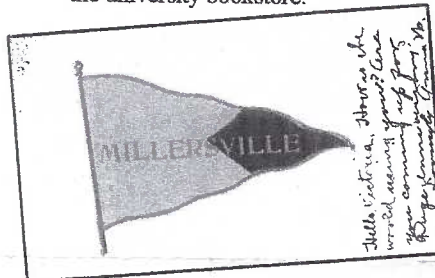
The MSNS yellow and black pennant card (center right) was mailed June 6, 1907.

The Millersville yellow and black pennant (top left) was mailed May 14, 1909.

The MSNS all yellow pennant (lower left) was mailed March 1, 1912.

Do the mailing dates give us a clue in the evolution of design changes? Who has the answers? Can Professor Scribbler get us an answer through his widespread readership? Tune in next month or watch the Professor's column in the *Lanc. New Era* for the answers.

And finally, a modern novelty postcard – a Post-Cal by Gill-line. The 3 1/2 x 6" card is a peel-off that can be stuck to any clean surface, indoor or outdoor. Besides the logo shown here, the name *Millersville University of Pennsylvania* appears beneath the circular logo. If your editor recalls, it came from Harry's collection and may be available at the university bookstore.



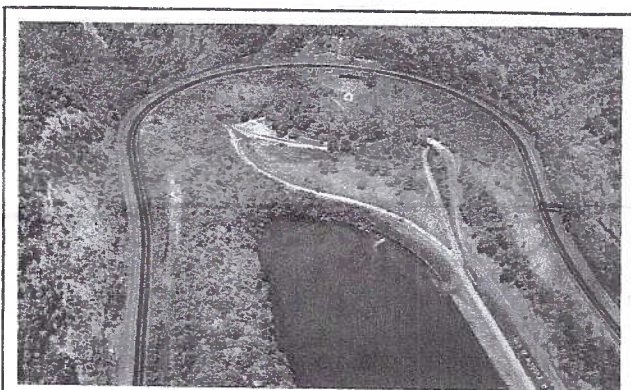
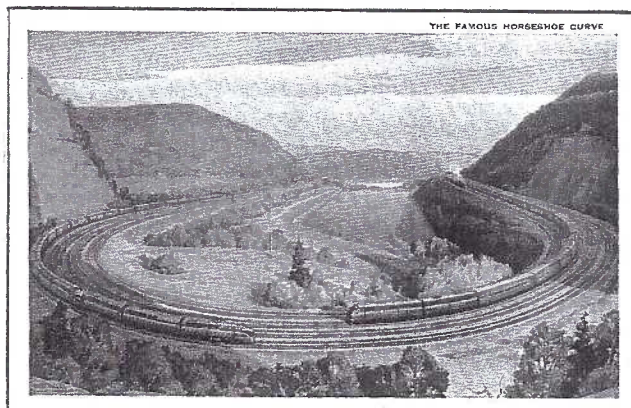
Grif Teller Painting Dated Incorrectly

Bill Seigford, LCPC #48, has been a staff member of *The Card* since Day One (though he may not know it, since he's never received a pay check). Bill deserves to be the club's Railroad Aficionado. Had he been looking over your editor's shoulder, a terrible mistake in last month's issue could not have occurred.

Choosing a postcard to celebrate the 150th Anniversary of the Horseshoe Curve was a pleasurable task. There were many PCs from which to choose. Picking the Grif Teller painting was an easy choice but labeling it a 1930s view was b-a-a-a-a-a-d!

Bill reminds us that Grif painted the scene in 1951. American Colortype printed the card the same year and the Pennsylvania Railroad published it in 1952. The card's white border led your editor down the primrose path and that's where he stumbled.

To appease, we here include that same Grif Teller painted scene (top card) along with another of the Horseshoe Curve. This latter view is a photo by S. L. Burns, distributed by The Camera Shop in Altoona, PA and printed by Curt Teich in 1963. How can we be so sure it's 1963?



World famous Horseshoe Curve

The production number in the stamp box is 3DK-1741. Here's a reminder of C-T's abbreviated formula for 1930 through the 1970s - A = 1930s, B = 1940s, C = 1950s, D = 1960s, E = 1970s and the *prefix number is the year within that decade*. So 3D = 1963.

Bill also reminds us that railroads are on the fast track of future business. Norfolk Southern Corp. had it's best quarter in its history. It adds train and engine crews each year. Virginia Dept. of Transportation got the green light to proceed with the first phase of passenger-rail extension to Dulles International Airport.

New Jersey Transit's passenger service increased over last year's and each month's commuter-rail ridership is better than the previous month. Sacra-

August Meeting/Picnic

WOW! What a day! After a rainy Saturday at the Expo, we couldn't have asked for better weather. The day started and ended on a gorgeous note. Members who were edgy about the previous day's downpour were inspired to turn out for the picnic meeting in numbers (40) greater than we've seen for a while.

Present and enjoying each other's company, the weather and a tremendous array of food were Betty and Tom Beck, Bryan Benner, Ove Braskerud, Shirley and Ray Bubb, Ellen and Al Crawford, Blanche and Chet Corrigan, Mary Darrenkamp, Carol and Ray Dennis, Ralph Edson, Bonnie Gable, Sharon and Keith Gromis, Betty Kreider, Marilyn Leese, Ruth and Harry Lines, Doug Milliken, Ruth and Harold Moyer, Marie and Joe Myers, Doris and Dick Pendergrast, Aida and Jose Rodriguez, Jim Rudisill, Dede Schaeffer, Maria and Win Schurz, Anne and Howard Steinberg, Jim Ward, Gisela Withers, Ruth and Fred Yohe

Set up and selling were Jim Ward with a repro of the previous day's display and Ove Braskerud (for Jose R.) with 30 boxes of 25¢ cards plus others.

End-of-summer school supplies and a beautiful foliage plant comprised the door prizes won by 18 lucky members. Betty Kreider won the 50/50.

Single card competition for August was **Add-Ons**. We were lenient with those entries that didn't exactly fit the definition and allowed all to participate.

Jim Ward	FIRST	Real hair lady
Ruth Moyer	SECOND	Feathered rooster
Harold Moyer	THIRD	Metallic Santa

Honorable Mentions

Blanche Corrigan	Love ribbons
Jim Rudisill	Ribboned phone line
Jim Rudisill	Feathered tropical bird
Mary Darrenkamp	Hidden views of Harrisburg
Betty Beck	Puzzle
Doug Milliken	Metallic horseshoe
Joe Myers	Outhouse
Keith Gromis	Embroidered monkey
Marie Schurz	Painted Chinaman
Dick Pendergrast	Metallic roadster
Jim Ward	Feathered peacock
Doug Milliken	Metallic windmill
Jose Rodriguez	Single hair (string) bald man
Bryan Benner	Gold foil pull-away auto
Tom Beck	Feathered flamingo
Betty Kreider	Metallic rabbit

Next month's topic will be MUSIC and on a full board. Here's a recap for the remainder of 2004:

October - Bats or owls - a single card.

November - Items with the letter T - a board.

December - Christmas interiors - a single card.

rail ridership is better than the previous month. Sacramento Regional Transit opened a 2.8 mile extension as a preliminary step to a new 10 mile line.

UPS is the largest intermodal (trucks on railroad flat cars) customer, setting a record of 500 days on the Florida East Coast Railway with no service failures.

And if you've read the Lancaster papers, you'll see expansion is anticipated in the old Diller-ville railroad yard (between Manheim and Harrisburg Pikes) to accommodate a much larger number of railroad freight cars.

Thanks again the Eagle Eye Bill.

Pink Ice Melts into the Sunset

After 48 Years, Lincoln Highway Beauty Salon Done with the Dos.

Halloween 1956 was opening day for Glen and Lucille Daub's Pink Ice Beauty Salon at 1997 ½ Columbia Avenue (Lincoln Hwy., west). Their beauty parlor idea materialized in 1954 with a basement business. Lucille liked Revlon's Blue Ice product's name but, to avoid copyright problems, settled on Pink Ice. By the 1970s Pink Ice employed 18, including stylists, shampoo girls, a receptionist and three barbers in an adjoining shop.

The accompanying postcard, cancelled in Lancaster on Aug. 17, 1962 was sent to customer, Margaret Hager at 1128 Columbia Ave. Many of Pink Ice's early customers were from the West End neighborhood.

The card's message speaks volumes for how postcards once played an important role in the business world –

"Dear Patron, Peeking into our files this morning, we discovered that it is just about time for your next permanent wave. You see, we're not guessing; that date for your last wave is right here in our records. And so is all the other invaluable data concerning your particular hair.

We've a special wave...a smart new coiffure in mind you're sure to like. So why not make that date with us soon? Cordially, Pink Ice Beauty Salon."

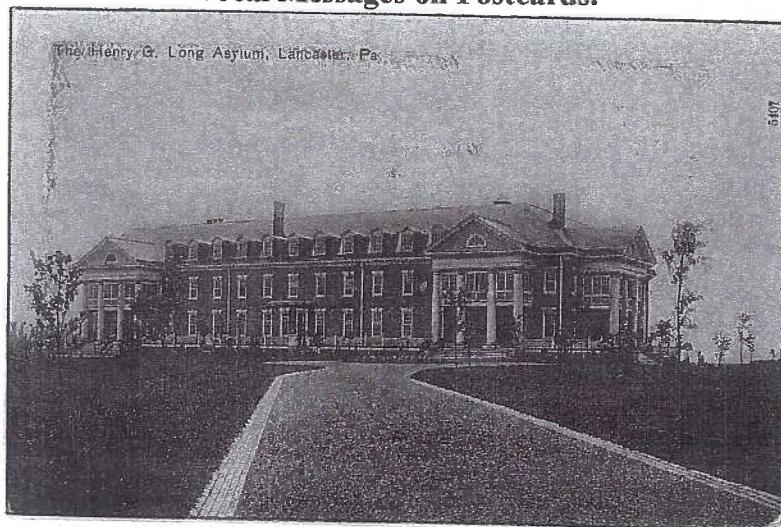
The Daubs will have retired by the time you read this. Pink Ice closed its doors on July 31, 2004.

The postcard printer is not identified.



It Pays to Read the Back...

Local Messages on Postcards.



Nov. 1908. Lanc. to Drumore.

Well Myra, How are you enjoying yourself? I am back again at the same old place studying hard. We have a dance in here Friday night. Don't you wish you were in here to tell the boys how to fly around the corners?

Are you going back to Millersville this winter?

Sep. 1909. Millersville to Lanc.

Dear Anna, I will leave a package for you at the Sorrel Horse Hotel on Saturday morn. Amanda.

To B. F. Herr in Lanc. (No date. Mailed in envelope.)

Will be in town next Sat. at 9. Will see you at the Sorrel Horse hotel 7 o'clock. Amos L. Mannigan.

Sept. 12, 1910. Lanc. to Lititz.

This eve I will take pleasure and answer your card. Many thanks for it. Well if nothing happens, I will be out on Sunday but I don't think the other party will come along. That is all over again. Well, what do you think of the fire we had in here last Sunday. It is still burning,* I will tell you about it on Sun. Good night.

* This was a fire that destroyed the Gunzenhauser Bakery then located at N. Mulberry and W. Grant.

SUPPLIES for YOUR POSTCARDS

New Item - Flexible Dividers with 2-tab

spacing for your Postcard Boxes 25/\$4.50, 100/\$15
Sleeves (no PVC) 100/\$1.50, 300/\$4, 1,000/\$12

Semi-rigid Sleeves 50/\$8, 100/\$15 (new, lower price)

Rigid Sleeves 25/\$9, 100/\$34

Postcard Pages (mix/match sizes) 25/\$4.50, 100/\$15

Postcards from your photos - Peelable Backs 20/\$5

At Morlatton Show - Nov. 26 and 27.

Jim Ward 1-717-721-9273 or midcreek@ptd.net

Future Shows

Sept. 12 Wind Gap, PA. Lehigh Valley Postcard Club. Plainfield Twp. Fire Hall. 9 - 4.

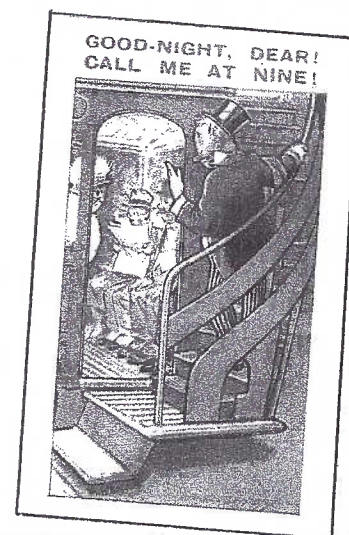
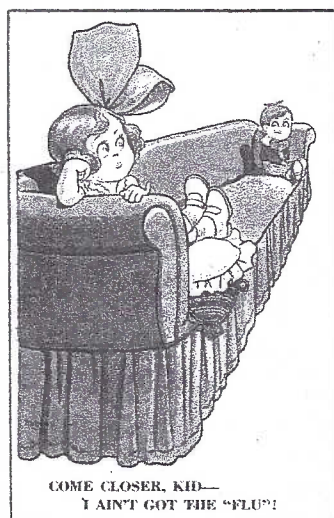
Sept. 25 Falmouth, PA. Goat Parade and Races. 10-4. If you haven't been there once, you should ought to.

Oct. 2-3 Allentown, PA. Great Eastern Antiques and Paper Show. Fairgrounds. 9-5, 9-3.

Oct. 9 Scalp Level, PA. Greater Johnstown Postcard Club. Fire Hall.

Oct. 23 Townson, MD. Days Inn, Loch Raven Blvd., Exit 29 off I-695. 10-5.

Pickins' at the Picnic... sharing a few grins gleaned from Jose's 30 boxes of post-expo cards and reminding you that September's Program is Show 'n Tell. (See below).



White Elephant Nets \$162.50

Thanks to a brilliant idea, the program for the picnic was a fund raiser in the form of a White Elephant auction. Contributions from many of the attending members included an electric timer, pictures and frames, books, Lancaster Motorists mags, a Bundt pan, a projector stand, jewelry, a photo album, blocks, a carrying bag, scissors holder, wine cooler, bird house, WWII pins from Russia, signs, political pin-backs, picnic cooler, and a filing stand and many more. Items fetched from 25¢ for a down spout to \$45 for a PC display rack

Jim Ward, the self-appointed very *amateur* auctioneer, sputtered and stammered his way through 53 lots, chiding nearly everyone for not spending enough - the proceeds would benefit the club treasury. In all, there's was plenty of fun and a check for \$162.50 went to LCPC's treasurer, Barb Mowrer.

Let's keep the auction in mind for next year.

September Program

What have you bought or unearthed recently? The program is **Member Participation**. We'll use the large opaque projector. Show us a postcard and tell us about it - two minute time limit - or your card may burn up! If time permits and you have second card, we'll have a second round of Show-n-Tellers.

Remaining Programs for 2004

Sept. - Show 'n Tell (Member participation)
Oct. - Annual Auction (Max. ten lots per member)
Nov. - Linen Postcards (Mark Werther, guest speaker)
Dec. - Poinsettias (Bryan Benner) at Christmas Party

Have you been told,
You don't have all your
buttons? Read about The
Button Family and others
in Jim Ward's *Journal*.
The Sept. issue is \$2 by
Mail or available at the
Lanc. and York meetings.

There was a young Lady From Lynn
Who was so exceedingly Thin,
That when she essayed,
To drink Lemonade,
She Looked Through The straw,
And Fell in.

