

THE CARD - Vol. 15, No. 10. Issue 178. October 2004.

Monthly Publication of the Lancaster County Postcard Club, Lancaster, PA.

Enjoying postcards through education and entertainment.

Next Meeting: Mon., Oct. 18, 2004. Farm & Home Center. Buy, sell, trade from 5:30. Meeting at 7 p.m.

Yearly membership is \$10 (\$5 for each additional member at the same address.)

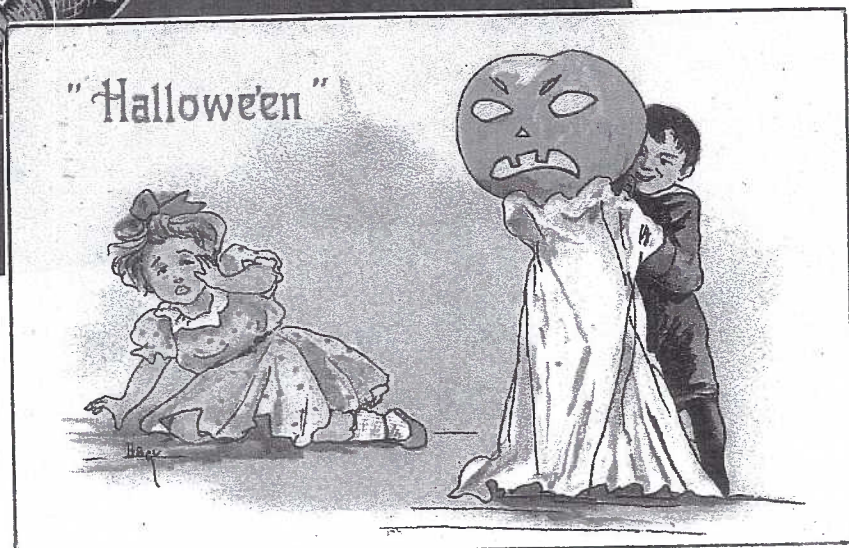
Make checks payable to LCPC and send to Betty Beck, 11 Cinder Hill Rd., Lititz, PA 17543.

Club and Editor's address: LCPC c/o Jim Ward, 1795 Kleinfeltersville Rd., Stevens, PA. 17578-9669 or midcreek@ptd.net.

Club website: www.playle.com/clubs/lancaster or Google search: lancaster county postcard club



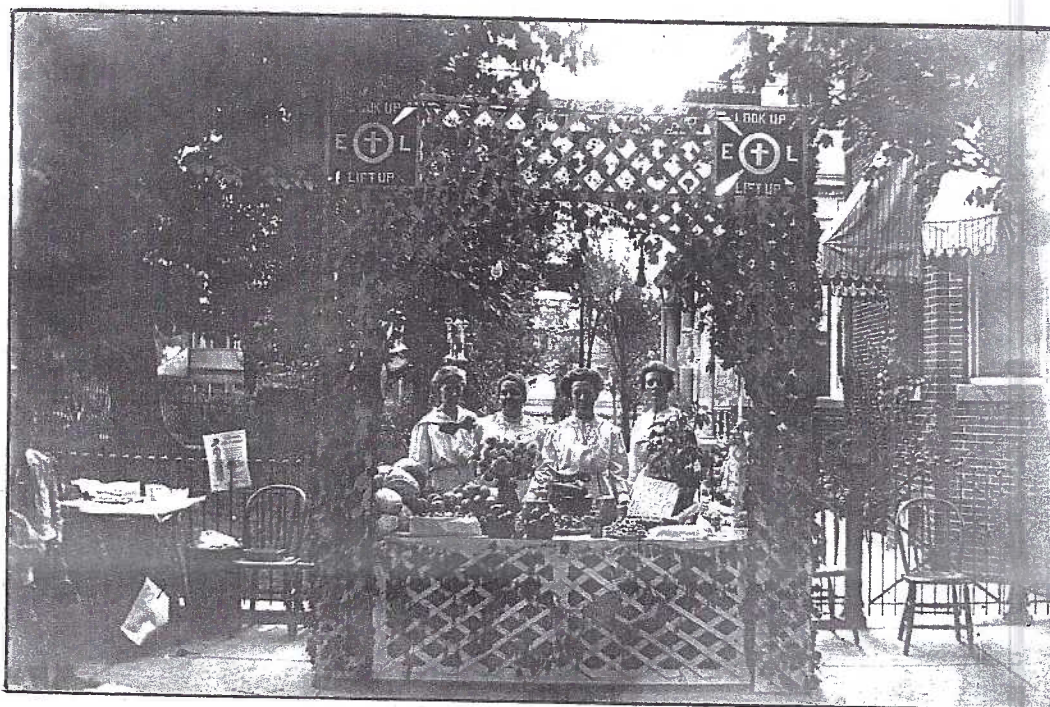
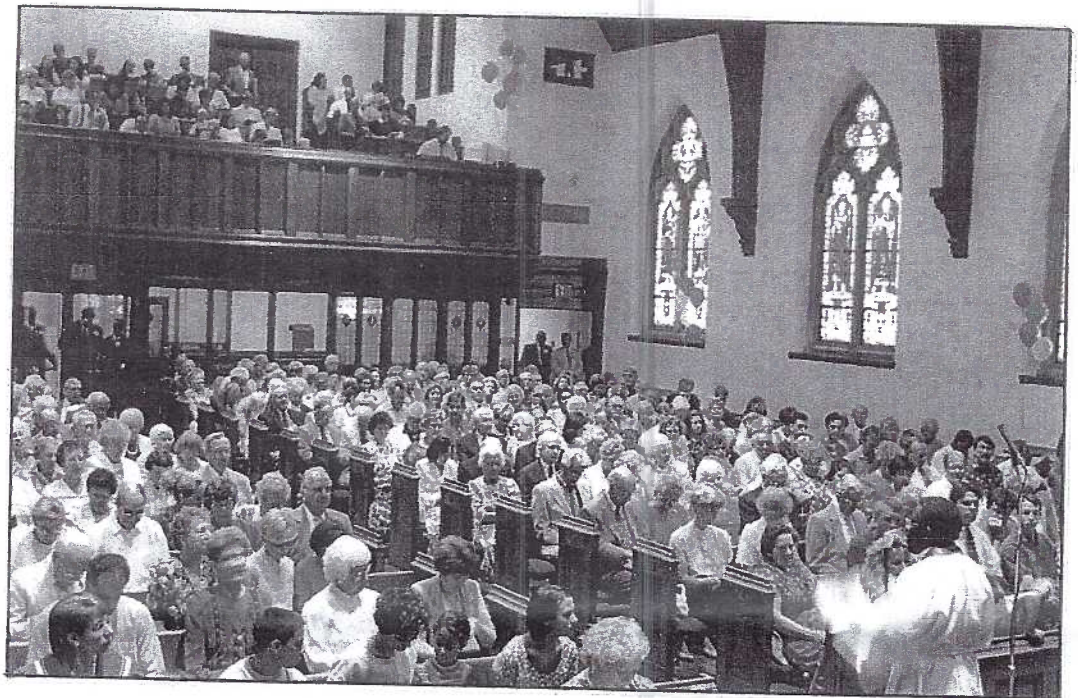
**Earl Carver's Postcards
and Memorabilia
For Sale
In Club Auction #35.
See Page 6.**



A "First" In Local Views?

Bryan Benner has a constant eye peeled for new local postcard issues. His latest find is the view on the right showing a congregation inside the First United Methodist Church at 29 E. Walnut St. in Lancaster. No publisher is provided. The only ID is "provided by Olan Mills Directory Division." Olan Mills is well known for its photographic business in the US.

A number of local church interiors show holiday celebrations and altar decorations but they are void of people. Has anyone seen a local church interior with a full congregation?



Where Is It?

Speaking of churches, both Howard Steinberg and Jim Ward each have this real photo view, (left) but can't locate it. They suspect it's church related, the clue being the encircled crosses in the upper corners of the ladies' display. Along with the crosses are the initials "E" and "L" and the motto, "Look Up, Lift Up."

Emanuel Lutheran Church at W. Walnut Street and N. Pine Sts. in Lancaster was a possibility, but none of the nearby homes could be ID'd on the PC.

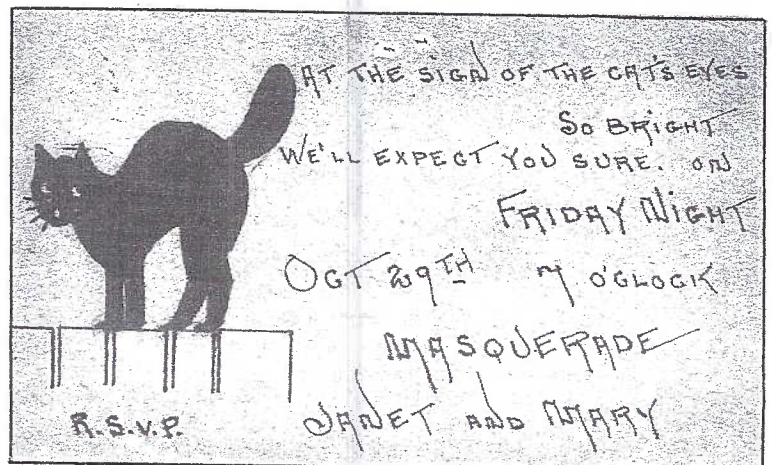
The produce, aside from the cabbages, aren't identifiable by season, but the ladies' dresses suggests it was a summer event. A magazine page tucked in the iron fencing appears to be an ad but can't be identified either.

Wherezit? Can you help?

Homemade Halloween Postcard

Master Ralph Pennock, Christiana, PA, received the card on the right. We can assume Janet and Mary were the creative artists. Master Ralph was a teenager when the card was mailed on Oct. 18, 1915. The year date was difficult to read. It looked like 1945 but thanks to the Internet, I checked a *virtual perpetual calendar*. It confirmed that Oct. 29th was a Friday in 1915 and was not in 1945.

Your editor knew Ralph. He was a good friend and fellow coin collector back in the 1960s. I bought the PC from his daughter when she disposed of his coin collection many years ago.

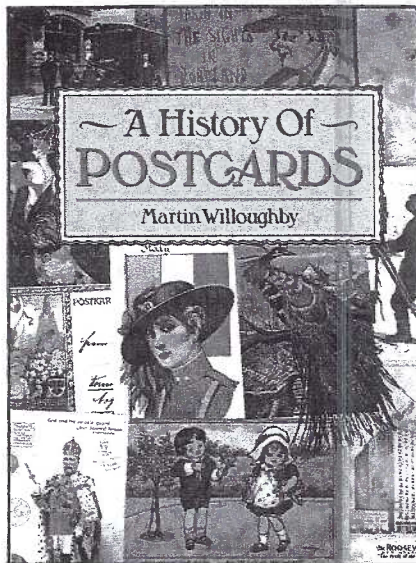


Cover Cards

H. B. Griggs is the artist of the children on our Halloween cards. Mashburn in his price guide, *Fantasy Postcards* (in our library), says #2214 is a set of four cards. Similar sets numbered #2215, 2216, and 2229 feature devils and ladies – all involved with pumpkins.

The fourth card, "Happy Halloween" spelled out in pumpkins, has a strikingly deep blue background reminding us of a dark Halloween night. The publisher, Hallmark, identifies the continental size card as #50H450-1.

Editor's Note: The club's librarian is Carol Giona. She has offered to write a column about books in the LCPC library for *The Card*. If you would like to borrow the book reviewed here, call Carol at 1-717-464-1410. She will contact a member of the Library Team and have the book available at the next meeting.



Library Highlight

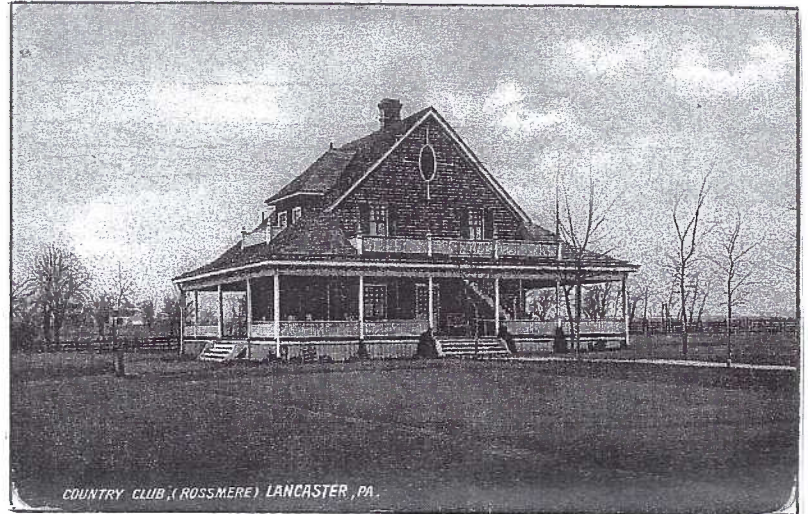
A History of Postcards By Martin Willoughby

Although the first Christmas card was printed in 1843, and Valentine cards became popular during the 1850s and 1860s, it was not until the late 1860s that the first officially produced postcards went on sale. But the dramatic rise of the postcards as a means of communication really dates from the 1880s when they were sent in ever-increasing numbers.

The early years of the 20th century saw technical advances in photographic and printing techniques that improved the quality of postcards and made way for a variety of new designs. The result was a 'postcard boom' that is not surprising, given the novelty and variety of cards available.

This beautifully illustrated volume explores the development of the postcard from its simple origins to vibrant colors and designs, which are typical of the modern postcard. The author draws upon his extensive knowledge of the subject both to describe the history of postcards and to provide useful information about collecting. He presents entertaining and intriguing cards to illustrate his highly readable and informative text.

It Pays to Read the Back... Local Messages on Postcards.



Oct. 1909. Lanc. to Altoona, PA.

The place on the other side of this card is directly across from the Base Ball Grounds. The Club is a beautiful place. It has golf links, two tennis courts and a very large pond for skating this winter. Do you skate? Thank you very much for your cards. Ans. soon.

Apr. 16, 1914. Lanc. to Cedar Rapids, IA.

Received your card. Leo is going to fight Chip in Ohio on the 21st. Good luck.

Feb. 1909. Lanc. to Jacob Keller in Lititz

A few lines to let you know that I have no engagement for Sat. night, so if you get over to my home before I do, you are to wait until I come, because I may not get out until 7:45 o'clock car out there.

July 1908. Lanc. to Lititz.

I am the girl that you gave your friend a rose. Now don't you forget to ans. and send a picture. I remain, Anna _____. Hope to see you at the rink soon.

Jun. 1907. West Willow to Lanc. to. Hollinger.

Dear Cousin, I will be in to see you sometime Thurs. afternoon and if you will go to the Strawberry Festival. Your sincere cousin, Ida.

SUPPLIES for YOUR POSTCARDS

New Item - Flexible Dividers with 2-tab

spacing for your Postcard Boxes 25/\$4.50, 100/\$15

Sleeves (no PVC) 100/\$1.50, 300/\$4, 1,000/\$12

Semi-rigid Sleeves 50/ \$8, 100/\$15 (new, lower price)

Rigid Sleeves 25/\$9, 100/\$34

Postcard Pages (mix/match sizes) 25/\$4.50, 100/\$15

Postcards from your photos - Peelable Backs 20/\$5

At Morlatton Show - Nov. 26 and 27.

Jim Ward 1-717-721-9273 or midcreek@ptd.net

Future Shows

Oct. 2-3 Allentown, PA. Great Eastern Antiques and Paper Show. Fairgrounds. 9-5, 9-3.

Oct. 9 Scalp Level, PA. Greater Johnstown Postcard Club. Fire Hall.

Oct. 23 Townson, MD. Days Inn, Loch Raven Blvd., Exit 29 off I-695. 10-5.

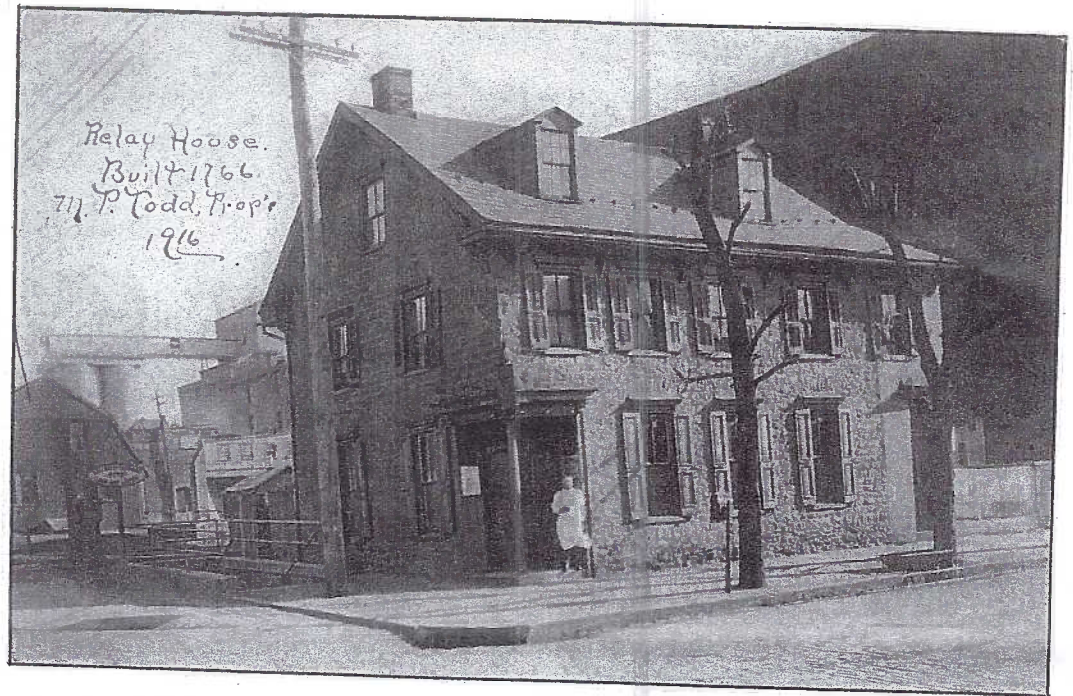
Padlocking the Relay House

One of your editor's favorite features in the *Lancaster New Era*, besides *The Scribbler* of course, gleans bits of history from the paper's pages of 25, 50, 75 and 100 years ago. We see Lancaster's history unfold in events that are sometimes serious and often humorous.

Postcard images are often conjured with these excerpts and this was the case with recent articles published Sept. 13 and 17, 1929 - "Two Lancaster hotels were padlocked for liquor law violations. They were the Relay House at Prince and Walnut streets and a saloon at Mulberry and Walnut streets..."

It was the time of liquor prohibition and law enforcement officers were kept busy.

Our real photo postcard was not mailed (no date) but a penned notation *does* date the card in 1916. It also mentions M. (Marcellus) P. Todd as the proprietor of the old stone Relay House.



Todd ran the Relay House and the saloon mentioned in the story - the Spring Garden Hotel - was operated by Peter Ziegler.

However, at the time of the "whisky raid," Mrs. Anna Shilow was proprietor of the Relay House. Ziegler still operated the Spring Garden Hotel (and rest-

aurant) on the northwest corner of Mulberry and W. Walnut streets.

Behind the Relay House we have a clear view of John W. Eshelman & Sons, Inc., a company that operated a feed distribution center on N. Queen Street into the 1960s.

MORLATTON POST CARD CLUB INC.



29th Fall Postcard Show

Farm and Home Center
1383 Arcadia Road
Lancaster, PA 17603
(off Manheim Pike Rte. 72)



Friday, November 26, 2004 - 10 A.M. to 6 P.M.
Saturday, November 27, 2004 - 10 A.M. to 4 P.M.

No Pre-Show Buying

Admission \$1.50
(25 cents off with ad)

For more information call
Kay Feight, (717) 263-1638
Leon Rowe, (610) 444-0641

September Meeting

Pre-Meeting Bustle

A meager group of 48 members and guests showed up in September but there was an unusual bustle of activity in the bourse section of the room. Members set up and selling were Dede Schaeffer, Al Schaub (see below) Howard Steinberg, Mike Middleton, Jim Luty, Jim Ward, Walter Mowrer and Bill Buckwalter.

2005 Entertainment Books at a Bargain Price

Dick Bishop, in case you're unaware, has sold his entire postcard inventory. His wife, Miriam, has undergone major surgery and Dick will be concentrating his attention on Miriam's care. We wish them both well. Dick did, however, have his annual Entertainment books for sale. The 2005 edition can be used immediately and he sells it for the rock-bottom price of \$21. Contact him in York at 717-854-4605. He hopes to be able to bring them to the York and Lancaster meetings.

Member Offers Postal Program

Al Schaub will be providing a program at the Lititz library on Tues., October 26 at 7 PM. The subject is A Mailbox History of World War II. His slide presentation is quite comprehensive. It includes the way stamps and envelopes became influential tools; the new technology known as V-mail; how mail found its way to the front without revealing the GI's location to the enemy; women's role in WWII; a review of censorship; the intrigue of the Lisbon to Bermuda connection; a tribute to naval ships lost in combat and more.

Al is a retired associate professor with Penn State University with 30 years experience as a lecturer and adult educator. He's been a stamp dealer and lecturer for ten years. To schedule a presentation, you can contact him at 717-560-6278.

This 'n That

President Doug Milliken will have a directors' meeting following the October membership meeting at the Foam and Harm center, Oct. 18.

Correction - Harry Lines is member #47 and Ruth is #114, your editor's error in the Sept. *Card*.

Sandra Schaub will be housing a box of *Vol. II, Windows to Our Past*. She is now living in Willow Street and can be reached at 717-464-0390.

Door prizes were won by Norman Zimmerman and Mary Darrenkamp. They were small easels to display a postcard.

Doug Milliken won the 50/50. It was worth \$20.50 and more than paid for the birthday cake he contributed to celebrate past president Bryan Benner's 39th (?) birthday. Bryan has amazed us all by losing more than 40 pounds through disciplined eating and walking or bicycling many miles every day. Do you dare eat all of that cake, Bryan??

You may receive photographs of your early exhibit boards with this newsletter. They were taken by Earl Carver and the directors felt they would most be appreciated by the owners.

Helpful Clues in Dating Postcards

Two digit zone numbers (Example: Phila. 20, Pa.) First used - May 1943

Five digit zip codes (Example: Lancaster, PA 17601) First used - July 1963

Three digit area phone codes (Example: 393-2463 instead of Ex 3-2463) for coast-to-coast calls. First used - November 1951

(Reprinted from Sept. 1996 *PC History Society*.)

Monthly Postcard Competition

Ruth and Harold Moyer were unable to attend the Sept. meeting so Jim Ward and Gisela Withers counted hands for the monthly competition. The subject, Music, was not an easy one to find for most members. More challenging was the requirement for a full board. Even so, four fine boards were made and of those, three - count them, three - were view and photo postcards of local bands and musical groups. Congratulations to these exhibitors:

Brian Frankhouser	FIRST	Local bands
Jim Ward	SECOND	Easter Tunes
Bryan Benner	THIRD	Music in Lancaster, PA

Honorable Mention

Harold Moyer Music at Its Best
Remaining monthly postcard competition for 2005 - Oct. Bats or Owls on a single card.

Nov. - Any items related to the letter T - on a board.

Dec. - A Christmas interior - a single card.

The Program

Participants in September's program each showed a postcard and accompanied it with a 2-minute description or explanation. Such cards invariably offer a variety of subjects and this night was no exception.

Mary Darrenkamp's 4-part card featured Adams County views of covered bridges and octagonal buildings she recently saw on a Theo. Burr Covered Bridge Society safari. Paul Smoker's view featured a New Holland harvester. Bud Heim's real photo was the rebuilding of a dam at Chickies Creek. Betty Beck's Tuck PC showed Mr. Pickwick sliding down an icy hill.

Walter Mowrer's 1894 postal card was an old auction sale bill featuring Iowa horses to be sold at a Fairfield, Penn Township auction. Dede Schaeffer's floral card was a reminder that it was cheaper to send a postcard than a greeting. Doug Milliken recently found a new addition to his Detroit collection - a Gilbert Stuart painting of Henry Nichols. Jim Ward's real photo was a new addition to his Lancaster city collection - a view of N. Queen St. from Penn Square.

For encores, Bud Heim showed the low grade bridge over the Chickies Creek on a real photo card and Dede Schaeffer's dove greeting had an early preprinted message.

Our thanks to these members for their contributions and a special thanks to Gisela Withers and her spotlight for the accurate notes she amassed in the otherwise darkened room.

October's program is the annual auction which, this year, includes 1,000s of Earl Carver's PCS plus others. See page 6.

November's program is by guest author, Mark Werther. His subject, *Linen Postcards* has been well received by area postcard clubs. He will have his book available to us. If members order as a block of five or more books, we can save considerable off the cover price. Details will be in the November *Card*.



LCPC Auction #35

Monday, Oct. 18, 2004

- A 20 Maps – US states and foreign
- B 30 Birds, animals
- C 18 Fairs, parades, expo's, events, 1908 to date
- D 30 Disney World
- E 35 Ships – all types
- F 25 Presidential related
- G 28 Ads, several are non-PC and postal backs
- H 15 Expo's – 1964, 1967
- I 30 Trains, trolleys and stations
- J 20 New Jersey, mostly shore, hotels
- K 3 National Wax Museum (Lancaster)

At her request, Jere Greider has assembled postcards given to him by Helen Carver to dispose of from Earl's collection.

As most of you know, Earl corresponded and traded PCs for many years with collectors across the USA and around the world. His primary interest was churches. After joining LCPC as a charter member in 1990, Earl expanded his collecting interests. As you can see from the listing that Jere composed, Earl assembled many topics.

Jere emphasizes that *the cards are mostly in good condition*. They are used and unused, mostly linen and chromes, and standard and continental size. Come early so you have adequate time to inspect the large lots.

- | | |
|--------------------------------------|---|
| 1 250 Canada | 44 16 Mississippi |
| 2 375 England | 45 96 Missouri |
| 3 220 Germany | 46 27 Montana |
| 4 175 France | 47 42 Nebraska |
| 5 165 Italy | 48 40 Nevada |
| 6 100 Mexico | 49 21 New Hampshire |
| 7 30 Norway | 50 62 New Jersey |
| 8 45 Spain | 51 11 New Mexico |
| 9 40 Assorted Folders | 52 42 New York |
| 10 125 Greeting From... | 53 13 North Carolina |
| 11 30 Sheep | 54 18 Ohio |
| 12 80 Skylines | 55 22 Oklahoma |
| 13 60 Schools, Colleges | 56 33 Oregon |
| 14 15 Space | 57 30 Rhode Island |
| 15 25 Sports | 58 125 South Carolina |
| 16 50 Stained Glass Windows | 59 51 North and South Dakota |
| 17 50 Sunsets | 60 44 Tennessee |
| 18 50 Swimming Pools | 61 95 Texas |
| 19 65 Trains | 62 114 Utah |
| 20 60 Verses | 63 140 Vermont |
| 21 100 Workers | 64 266 Virginia |
| 22 49 Alabama | 65 30 Washington |
| 23 40 Alaska | 66 45 West Virginia |
| 24 137 Arizona | 67 68 Wisconsin |
| 25 29 Arkansas | 68 53 Wyoming |
| 26 49 California | 69 220 Niagara Falls |
| 27 68 Colorado | 70 140 Pennsylvania |
| 28 88 Connecticut | 71 50 Lancaster County |
| 29 29 Delaware | 72 30 Real Photos |
| 30 83 District of Columbia | 73 Box – 400 Topicals & Views |
| 31 215 Florida | 74 Box – 400 Foreign |
| 32 130 Georgia | 75 Box - 350 Holy Lands |
| 33 106 Hawaii | 76 Box – Oversize Postcards |
| 34 20 Idaho | 77 Lot of Small Folders |
| 35 62 Iowa | 78 Album – 80 Clocks |
| 36 48 Kansas | 79 Album – 80 Humor |
| 37 26 Kentucky | 80 Album – 256 Clocks, Watches |
| 38 20 Louisiana | 81 Album – 47 Clocks, Watches |
| 39 68 Maine | 82 Album 41 Historic Churches |
| 40 64 Maryland | 83 A complete set of <i>The Card</i> plus club rosters. |
| 41 415 Massachusetts (incl. 2 pkgs.) | 54 Three (3) albums of misc. postcard articles includ- |
| 42 171 Michigan | ing a small collection of privy (outhouse) cards. |
| 43 53 Minnesota | High bidder has choice of 1, 2, or 3 albums. |