

THE CARD - Vol. 15, No. 11. Issue 179. November 2004.

Monthly Publication of the Lancaster County Postcard Club, Lancaster, PA.

Enjoying postcards through education and entertainment.

Next Meeting: Mon., Nov. 15, 2004. Farm & Home Center. Buy, sell, trade from 5:30. Meeting at 7 p.m.

Yearly membership is \$10 (\$5 for each additional member at the same address.)

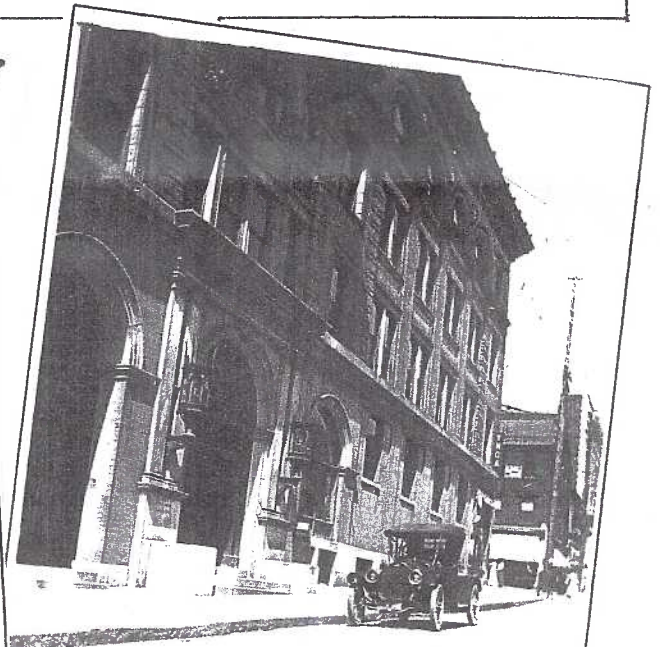
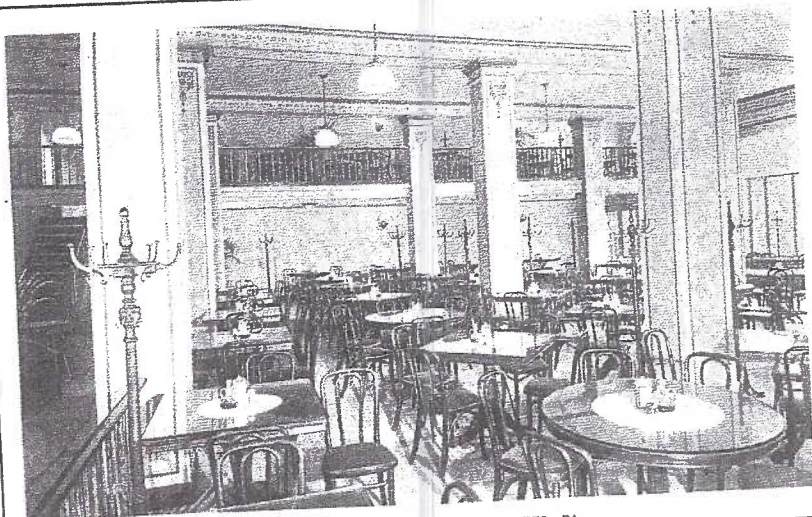
Make checks payable to LCPC and send to Betty Beck, 11 Cinder Hill Rd., Lititz, PA 17543.

Club and Editor's address: LCPC c/o Jim Ward, 1795 Kleinfeltersville Rd., Stevens, PA. 17578-9669 or midcreek@ptd.net.

Club website: www.playle.com/clubs/lanaster or Google search: lancaster county postcard club



Happy 150th Birthday Lancaster Y.M.C.A.



Happy 150th Birthday Lancaster's Y.M.C.A.

For thousands of Lancastrians the mammoth 4-story building on the northwest corner of N. Queen and W. Orange Streets was part of their family. Generations of boys spent leisure hours at the Y, learning to swim, to play indoor sports, to read, to get along. In the latter years of the 19th century the corner housed Emanuel Shober's hotel, first known as the Eagle and then as the Columbian Hotel.

The corner's transformation took place in the 1890s, making way for the immense structure. More than a dozen PCs featured the YMCA, most of which we offer here - listed by publisher.

Undivided backs (pre March 1907)

Lancaster Photo Supply House (real photo card)

The Metropolitan News Co., no number

National Art Views Co., #2681

The Rotograph Co., #A 6162

Real Photo (Kodak stamp box) Top PC, front cover

Divided back (uneven = wider address section)

The Metropolitan News Co., #1761

Unidentified publ. (first leader training conference)

Divided back (after March 1907)

Artvue Post Card Co., no number

A. C. Bosselman & Co., #8431

E. C. Kropp Co., #M-1462 (cafeteria) front cover

National Post Card Co., no number

Curt Teich, for I. Steinfeldt, #2946-29

Tichnor, #A-15068

The Valentine-Souvenir Co., #221081

Simon & Murnane, York (real photo card) front cover

Unidentified publisher (Kodak stamp box)

First Lancaster County Young Men's Christian Association Leader Training Conference, Landisville Camp Grounds, August 10-11, 1912. The reverse continues "The most important function of the Lancaster County YMCA is the discovery, enlistment, training and direction of volunteer leaders for the social, educational, religious and physical activities among young men and boys of Lancaster County."

October Meeting

A great fall evening brought out the usual compliment of 60 members and a few guests, two of whom joined LCPC (see New Members).

It was so good to see Elizabeth Graver and Miriam Bishop with us again. Also, Ed Harris made a rare appearance and he was most welcomed. Word has it Shirley Bubb will enter the hospital for a knee replacement in Nov. She's waiting until after she votes on Nov. 3. Now there's a patriot! And Shirley, don't believe Ray when he tells you your replacement will heal more quickly with a fishing rod in your hand, standing thigh deep in the Yellow Breeches Creek.

Set and selling in Oct. were Dede Schaeffer, Jim Ward, Dick Bishop, Bob Kramer, Norman Zimmerman, Howard Steinberg, Mike Middleton and Al Schaub. Selling time has crept up to 5 PM.

Pres. Doug Milliken asked for door prize donations and there were enough to satisfy five lucky members - John Rodkey, Teresa Jumper, Fred Yohe, Blanche Corrigan and Theo Reinko. Norman Zimmerman was the lucky winner of \$30 in the 50/50. Speaking of which, someone's slipping, by not covering the room offering to sell tickets. Also, many people arrive before the club table opens and never get door prize tickets. Both minor problems can be fixed.



Y.M.C.A. In this 1929 view by Curt Teich, Chicago, for Ike Steinfeldt, Lancaster, we can barely see below the giant YMCA sign a smaller sign mentioning the Y's popular cafeteria (see front cover). Store signs reading north from the Y corner are Tri-Plex Shoes, Ream's Stationer, Golde Clothes, Hanover Shoes and the Williams Clothes store.



First Lancaster County Young Men's Christian Association Leader Training Conference, Landisville Camp Grounds, August 10-11, 1912.

A greater disappointment, judged by a concerted moan from the membership, was that Secretary Gisela Withers announced she had no anecdotal incidents to preface her excellent reading of the minutes. *Ed. note:* Gisela, you've a stand-up-comic gene and we don't want to see you repress it.

Carol Giona, our librarian, announced acquisition of two loose leaf binders from the Earl Carver estate. They include newspaper clippings of the club's activities over the years. A third album has loads of photos from the early days of the club. Also to be housed in LCPC's library will be the albums of National Postcard Week exchange cards. These are wonderful sources for inspiration should you be thinking of making your own NPW card for 2005. It's the first full week in May.

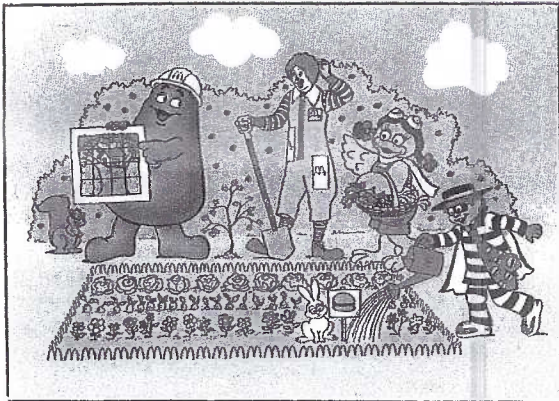
Ruth Moyer reported she will have LCPC blue denim shirts available in November. She wore a sample and the embroidered logo looks great!

Dot Brown, a non-attendee but faithful member, has donated 100 postcards for the 10¢ box. Have you some cards that need a home? Keith Gromis is in charge of the Ten Cent Box at the club table and will happy to help you.

Happy 100th Birthday to all Hamburgers...

A & W, Backyard Burgers, Big Boys, Big Guys, Burger King, Burgerville, Carl's Jr., Checkers, Culver's, Fatburger, Flamer's, Fuddrucker's, Good Times, Hardee's, Hippos, In-and-Out Burger, Johnny Rockets, Krystal, McDonald's, Nathan's Famous, Wendy's, Whataburger, White Castle and our apologies to other brands we've overlooked.

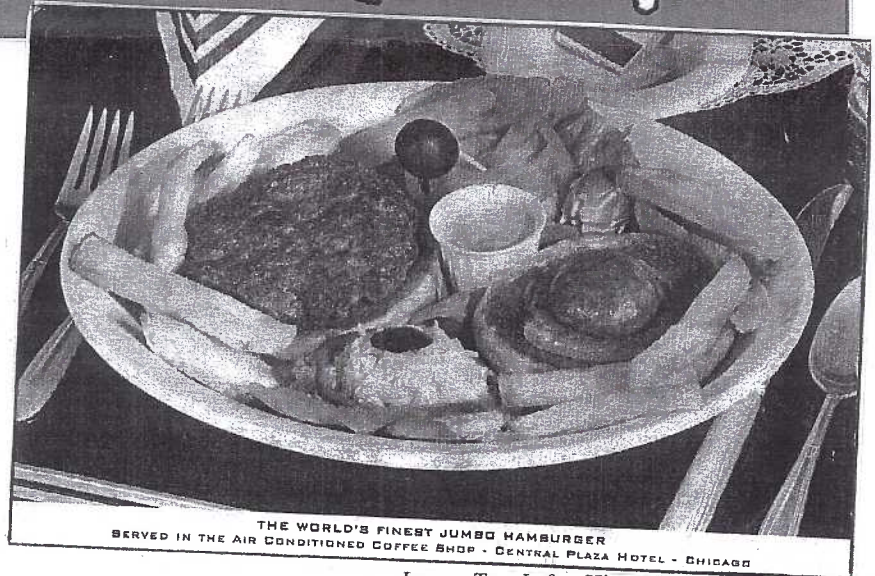
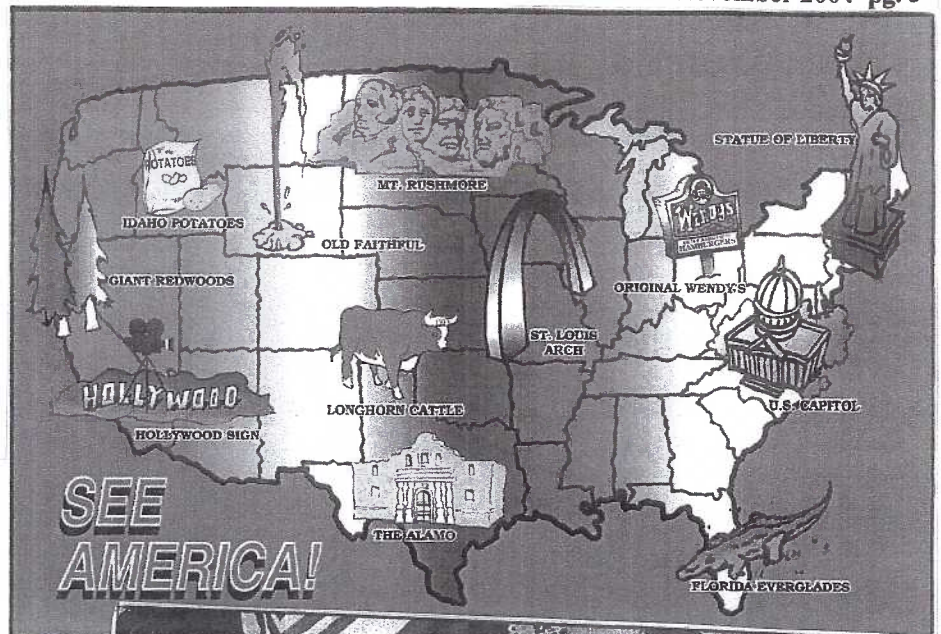
Historians may argue themselves blue in the face about which city should be credited with the birth of the burger. Most agree, however, that millions of fairgoers went home with unforgettable memories that included ground beef on a bun that they had eaten for the first time at the St. Louis World's Fair in 1904.



Burger Cards have been around for nearly sixty years!

Top Left - The McDonald's postcard, above, was mailed from Sweden in 1993. It was printed on recycled paper.

Top Right - Wendy's issued a neat travel pack in 1996. It included a booklet of seven postcards, each with an educational game for children. One was the rainbow colored map of the USA. The reverse had a map with state IDs. Using both maps a child was asked to find the state where Old Faithful is found, name the famous statue in New York harbor and find the state that grows a lot of potatoes 'for your fries.'

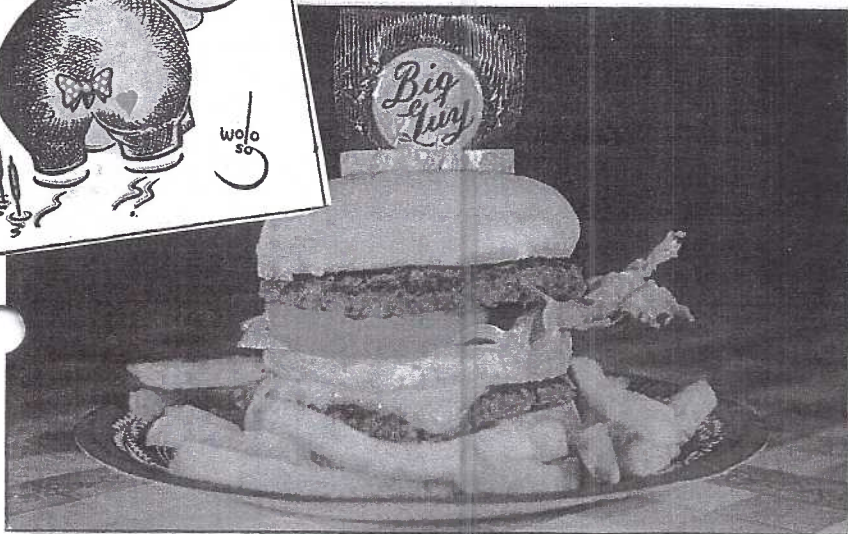


Lower Top Left - Hippo Hamburgers were famous in San Mateo, Menlo Park and San Francisco. Are they still around? The restaurants offered "57 fantastic varieties of hamburgers from the Cannibalburger (raw) to the Tahitianburger (exotic)." Can someone decipher the artist's signature?

Lower Bottom Left - The Big Guy is also referred to (on the reverse) as a Pop 'n Top sandwich. Colourpicture printed the card for an Erie, PA company. No date, but 1960s would be an educated guess.

Lower Right - Burger King mailed an insert in newspapers in Feb. 1997. The reverse asked any child under eight years old to send data including birthday and to "wait 'til you see all of the fun stuff waiting for you at Burger King."

Lower Right - C. R. Childs published the b/w postcard with a platter of "the world's finest jumbo hamburger served in the air conditioned coffee shop in Chicago's Central Plaza Hotel." Not used, not dated, the reverse print font looks like 1930s art deco.



Just Think ...

- Members get cool stuff in the mail.
- Members get a FREE Hamburger Meal on their birthday.
- Members get in on other special offers - and more!

it's all **FREE!** **BURGER KING CLUB** so join now!

*Most Priority Mail® Membership Cards to receive free stuff. Only one free meal per Member per year. Offer good only at participating restaurants. An adult must be with you.

Temporary Membership Card

Name _____

BURGER KING CLUB

November Program

Author is Guest Speaker.

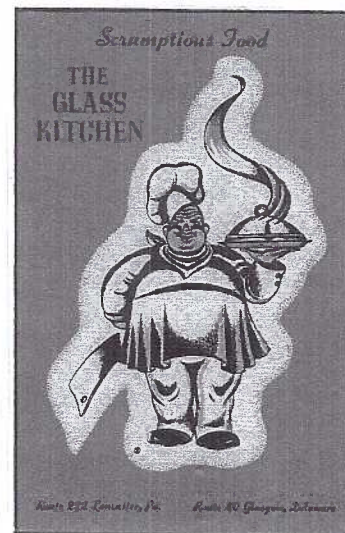
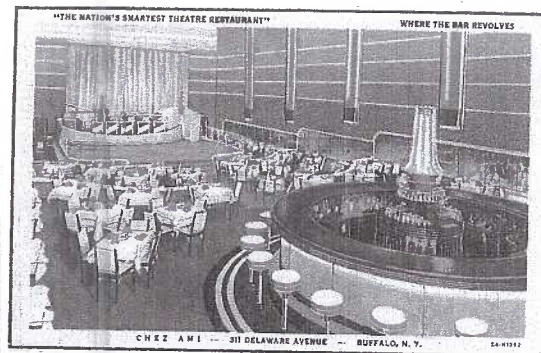
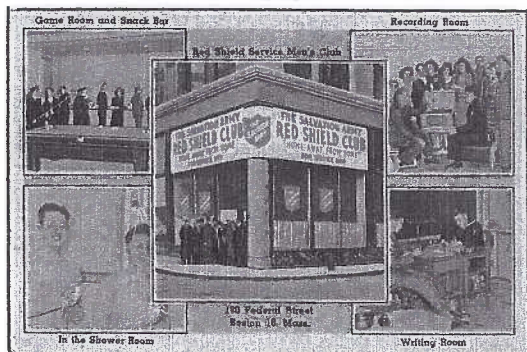
Mark Werther will offer a slide presentation covering the highlights of a book, *Linen Postcards, Images of the American Dream*, which he co-authored along with Lorenzo Mott. The 152-page hard cover book is in our club library. If you collect linens or are curious to learn more about them, borrow the book soon. In fact, Mark has promised to bring signed copies with him should you like a copy for yourself or to give as a gift.

Without distracting from his slide program, we'll recap the Table of Contents here. You can expect Mark to cover the majority of the subject with the 40-plus slides. He has presented this program to many groups and Mark says the Question and Answer session following the slides has been well received.

Try to make this colorful and informative showing on November 15.

Excerpts from the Table of Contents of *Linen Postcards* – Collecting Experiences, Linen Postcard Development, Variations, Evaluating Linens, Collecting Strategies, Quality and Care of Linens, An Interview with Lawrence Tichnor, Manufacturers, Distributors and Publishers.

Hundreds of linens – in full color – and shown under such categories as Large Letters, Humor, Transportation, Pin Ups, Roadside, Hotels, Entertainment Glitz, Art Deco Buildings, Sports, Western, Animals and Industry. To give you a taste of the types of cards in the book and Mark's program, we present our own array of linen postcards.



An Array of Linens

Top Left – Earl Moran's 1943 pin-up was for the A. Rifkin Co., Wilkes-Barre that made locked bank bags.

Top Right – 1935 Chez Ami Restaurant "Where the Bar Revolves" by Curt Teich.

Center Right – 1940 animated large letter greeting of Niagara Fall by Curt Teich.

Lower Right - Lancaster's Glass Kitchen at Rtes. #222 and #501 and Glasgow, DE 1944 by Curt Teich.

Left – Tichnor printed a World War II multi-view featuring The Salvation Army's Red Shield Club. Shown are the game, recording and writing rooms and showers provided by the Salvation Army for our men and women in the Armed Forces.

Continued on page 5.

Monthly Postcard Competition

The theme was **Owls or Bats**. Entries were a single card. It's obvious a single card invites more member participation and you'll see, elsewhere in this issue, a list of themes for 2005, most requesting only a single card.

Carol Dennis	FIRST	Halloween Secrets
Dede Schaeffer	SECOND	Pursuit of Knowledge
Ruth Moyer	THIRD	Speak to Me Only

Honorable Mentions

Betty Sowers	Don't Let the Ghosts and Witches...
Bob Kramer	A Wise Old Owl
Jim Morrison	Owl Pick
Harold Moyer	It's My Fate
Gisela Withers	Owl in a Pine Tree
Walter Mowrer	Strange Sounds are Heard
Doug Milliken	Snowy Owl
Ray Dennis	Good Luck for Halloween
Don Jumper	Birds of the High Country

November's theme is the letter "T". Make a board of any subject beginning with T. For the Christmas Party/Meeting the theme is Christmas Interior, a single card - real photo or a printed card.

New Members

#739 **James Tigner** 16 Treetop Trail, Fairfield, PA 17320. Jim was a dealer at our August Expo.

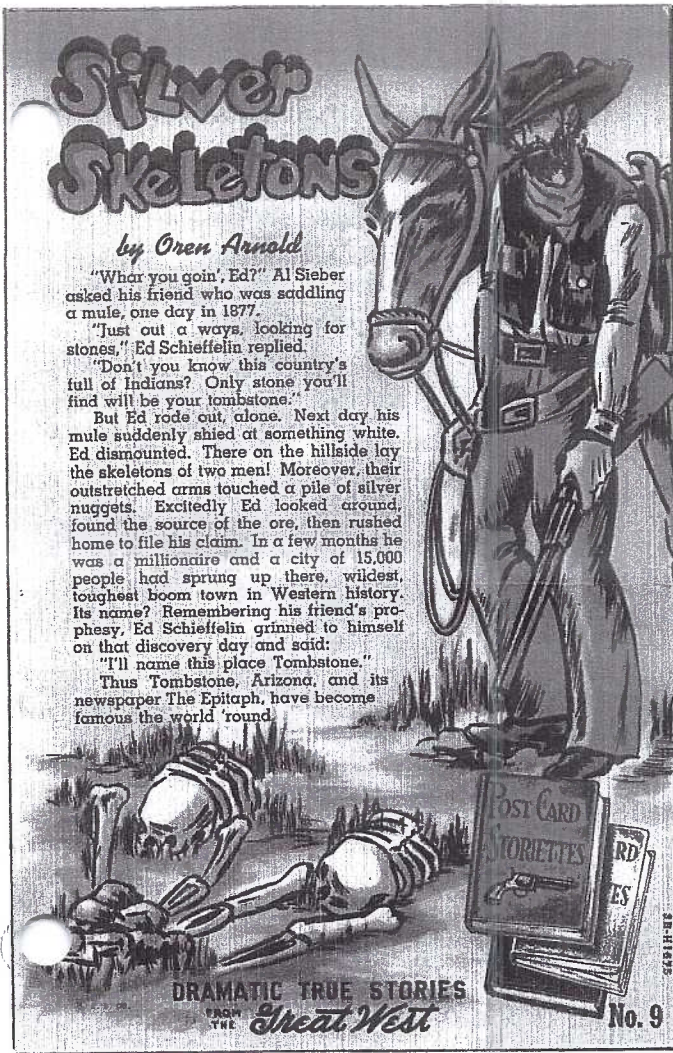
#740 **Gordon S. Hayner, Jr.** 92 Pleasant St. Stoughton, MA 02072. Gordon is editor of the Rhode Island Post Card Club's quarterly newsletter.

#741 **Dr. Kate Epperly** and #742 **Maxine Gould** 832 Westminster Dr., Lancaster, PA 17601. Ph. 1-717-898-0311; e-mail drkateepperly@aol.com. Maxine inherited a lg. collection of antique postcards (as have many collectors new to the hobby) and daughter Kate has a general interest at this point (also, as many beginning collectors do). Mother and daughter recently moved here from the DC area.

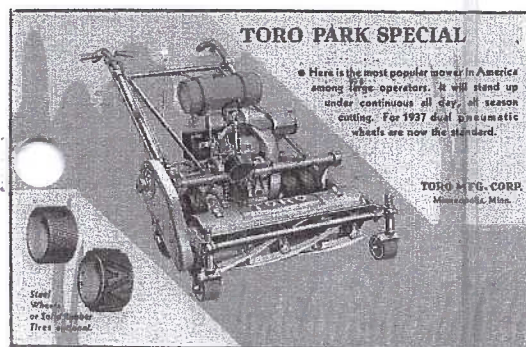
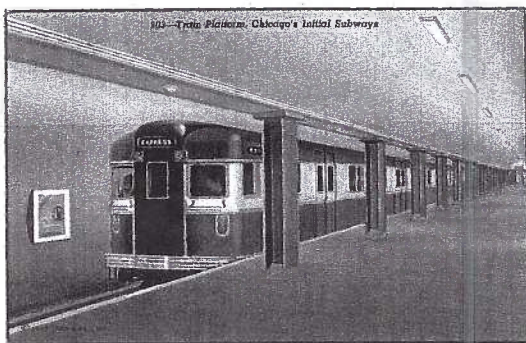
This month's postcard insert celebrates the
100th Anniversary of
Trinity Evangelical Congregational Church
Terry Hill, PA

It's with the compliments of
Ethel and Norman Zimmerman.

Also enclosed is a discount admission postcard for the
Morlaton Postcard Show in late November.



Above – A complete true western story on a postcard – Silver Skeletons is one in a set of 18 Post Card Stori-ettes written and drawn by Oren Arnold. Curt Teich printed the colorful cards as well as a folder in 1943.



Array of Linens continued.

Top Right – Harrisburg, PA airport by Curt Teich, 1941.

Second Right – The relaxing gal is in Curt Teich's Modern Girl Comics, a WWII set of 10.

Third Right – 50¢ Bird-in-Hand-Hangover Breakfast offered at a Broadway, NYC diner. #14188 by Colourpicture.

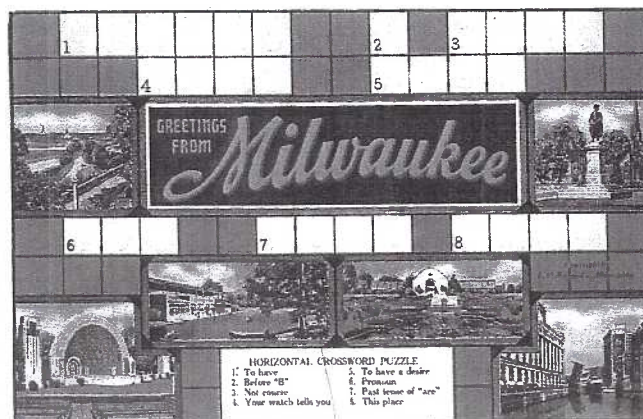
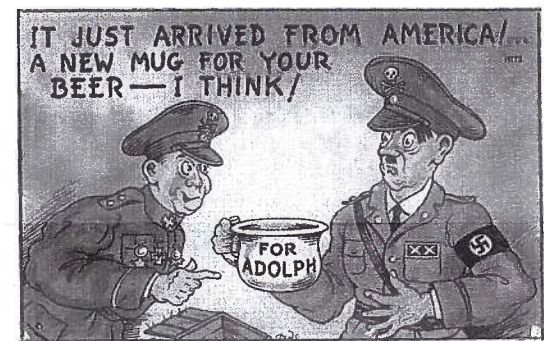
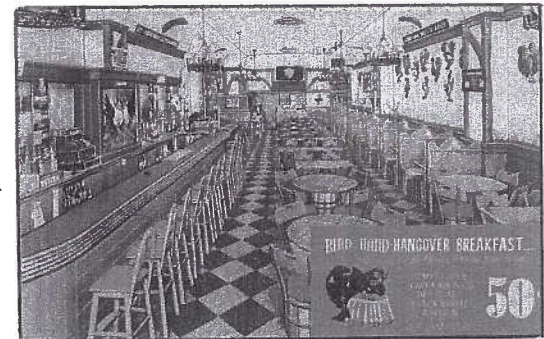
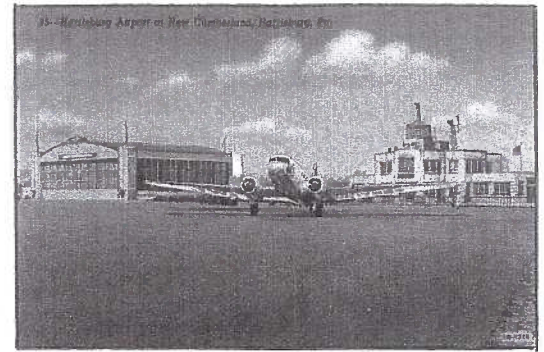
Fourth Right – HIT2 in Tich-nor's Hitler Comics, 5 designs.

Fifth Right – An Amish woman in downtown Lancaster, printed by C-T in 1935 for Madciff of Hershey, PA.

Below – E. C. Kropp's Milwaukee PC with a hidden greeting in the crossword.

Top Left – A 1941 Curt Teich view feature's Chicago's new subway.

Second Left – Toro offered steel or rubber tires on its mower, the 1937 Park Special. Curt Teich.



100 Books For Sale

Local histories, coin, currency and other reference books for sale. Contact Jim Ward, 1-717-721-9273 or midcreek@ptd.net for listing.

Future Monthly Competition Themes

S = single postcard; B = board of postcards

2004

Nov. Letter "T" (B) It need not be a Turkey.

Dec. Christmas interior (S)

2005 (tentative)

Jan. Snow People (S)

Feb. Letter "L" (B) It need not be Love.

Mar. The color Green (B)

Apr. A favorite Advertisement (S)

May Potpourri (B) The sky's the limit = anything!

June Amusements or Amusement Parks (S)

July Patriotic (S)

Aug. Gardens or Gardening (S)

Sept. A favorite rral Photo postcard (S)

Oct. The color Orange (S)

Nov. Something for which to be Thankful (S)

Dec. Angels (S)

Note how many months the requirement is just a single card. This should make it a more inviting search for many members whose collections are not extensive. The more participants, the merrier!!

Follow Up to "Where Is It?"

Thanks to a friend of Pres. Doug Milliken's, the RP of the ladies working behind the bazaar (?) stand shown in the Oct. CARD was, indeed, at the Emmanuel Lutheran Church in Lancaster. Huge additions to the edifice including changes to the side and rear of the church have erased any signs seen in the picture. Thanks, Doug.

2005 Slate

At the November meeting, a slate of officers and directors will be presented. Additional names may be submitted from the floor in November. Should you be willing to serve, contact VP Sharon Gromis at 1-717-892-6864, especially if you'll accept the VP office. Remember, LCPC Presidents receive life time memberships in the club. Do the math!

President Sharon Gromis

Vice President

Secretary Gisela Withers

Treasurer Barabra Mowrer

Directors for 2004-2005

Dede Schaeffer, Ruth Moyer, Harold Moyer

Directors for 2005-2006

Jere Greider, Carol Giona, Gisela Withers

Future Shows

Nov. 6 Belmar, NJ. Jersey Shore Post Card Show at John Taylor Pavilion.

Nov. 12-14 NYC Metropolitan Post Card Club's Fall Show at the New Yorker Hotel.

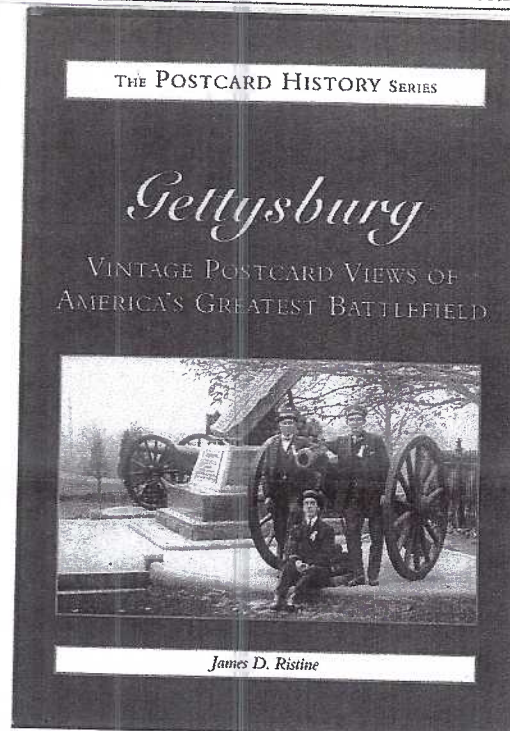
Nov. 19-20 York, PA Bill Martin's International Show at York Fair Grounds. \$5. adm. For both days.

Nov. 26-27 Lancaster, PA Morlatton Post Card Club Show at the Farm & Home Center. \$1.50 adm. for both days. Discount postcard enclosed with this issue.

Nov. 27 S. Portland ME Brewster Harding's Antique Paper Show at Governor's Restaurant.

Dec. 11 Towson, MD Dee Delcher's Postcard & Paper Show at Days Inn, Loch Raven Blvd. Free adm.

Editor's Note: The club's librarian is Carol Giona. She has offered to write a column about books in the LCPC library for *The Card*. If you would like to borrow the book reviewed here, call Carol at 1-717-464-1410. She will contact a member of the Library Team and have the book available at the next meeting.



Library Highlight

Gettysburg -

Vintage Postcard Views of America's Greatest Battlefield

By James D. Ristine

It is said that the Battle of Gettysburg is one of the most written-about and analyzed conflicts in world history. This book presents its dramatic story in a unique and interesting way. It explores the events of the battle, the battlefield, and the town itself through the use of vintage postcards that were published from 1900 through the early 1920s. The images will enable you to visit the town where the hostilities took place, follow the sequence of major events of the battle, and look upon the battlefield sites where the nation's fate was decided. You will also visit the National Cemetery which is the final resting place for many who fell in battle, see the monuments erected to honor those of both sides who fought here, and take note of the veterans, tourists, and others who have come to this "hallowed ground" and become part of history of what we know as the Gettysburg National Military Park.

The reader who visits the battlefield will notice that many of the views depicted on these postcards have changed. Some roadways have been modified, added, or even removed. Other monuments have been erected, and trees and vegetation have altered the panorama of the battleground. But one thing has remained the same - the battlefield stands as a tribute and lasting remembrance to all those, from the North and South, who fought here in the summer of 1863.

Jim Ristine offered LCPC a program based on his book some time ago. He is a member of the York Post Card Club. If you have trouble finding the book, you might contact him at 21 Burnside Dr., East Berlin, PA 17316; phone 1-717-292-6569; e-mail: jdristine@hotmail.com.