

THE CARD - Vol. 16, No. 5. Issue 185. May 2005.

Monthly Publication of the Lancaster County Postcard Club, Lancaster, PA.

Enjoying postcards through education and entertainment.

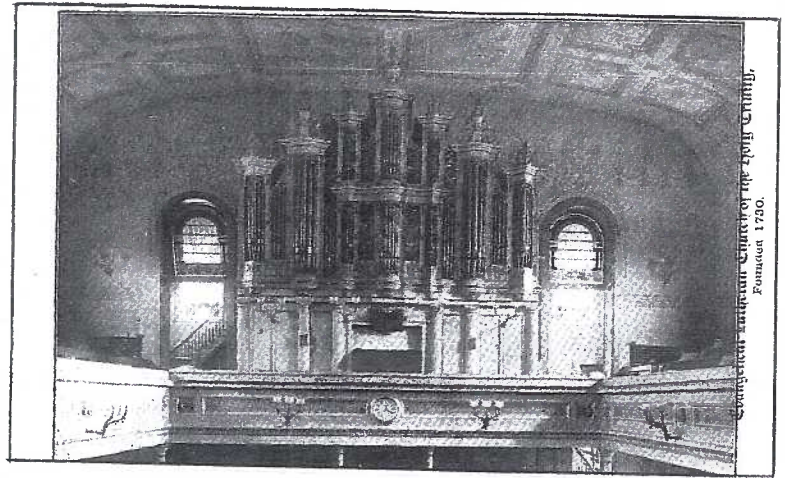
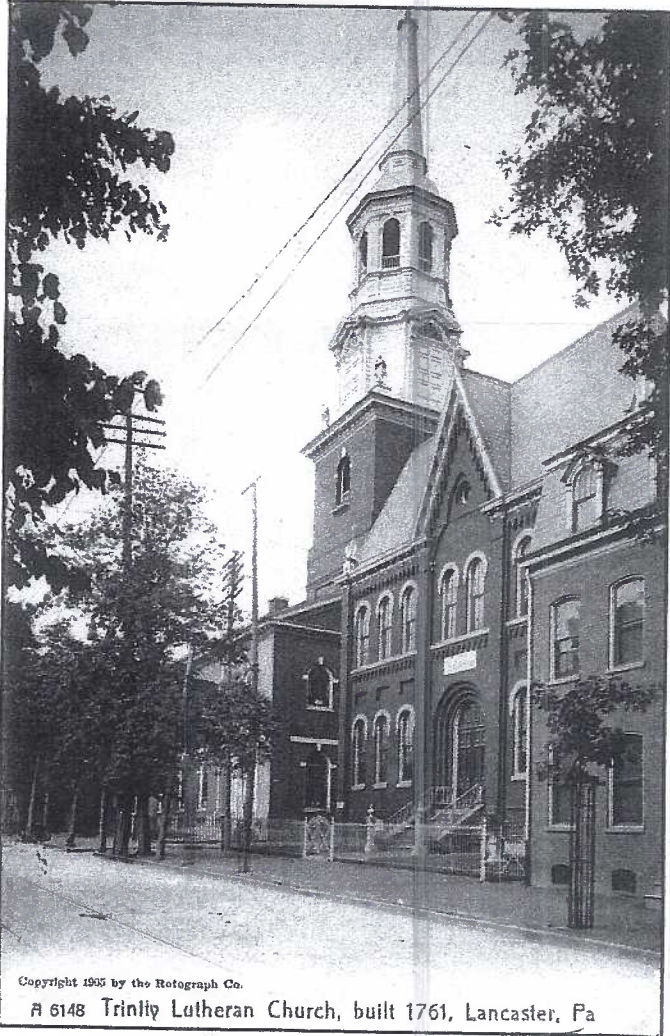
Next Meeting: Mon., May 16, 2005. Farm & Home Center. Buy, sell, trade from 5:30. Meeting at 7 pm.

Yearly membership is \$10 (\$5 for each additional member at the same address.)

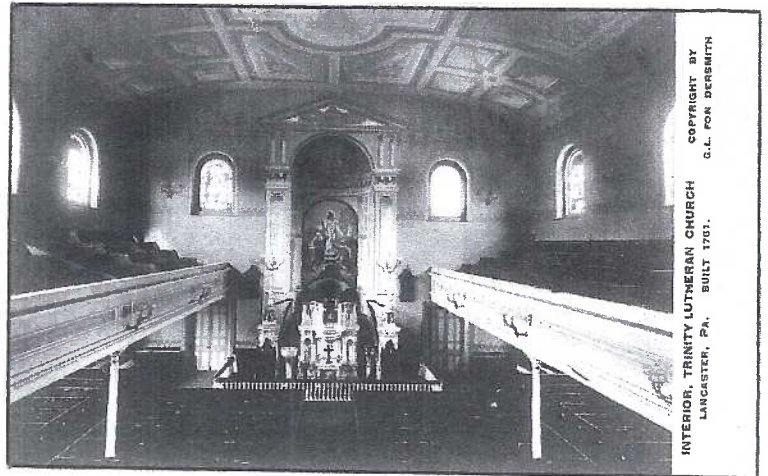
Make checks payable to LCPC and send to Betty Beck, 11 Cinder Hill Rd., Lititz, PA 17543.

Club and Editor's address: LCPC c/o Jim Ward, 1795 Kleinfeltersville Rd., Stevens, PA. 17578-9669 or midcreek@ptd.net.

Club website: www.playle.com/clubs/lanaster or Google search: lancaster county postcard club



**TRINITY LUTHERAN
- 275 YEARS**



MAY
Is FREE-for-ALL
MONTH!

(See page 4 for details.)

Messages on Local Postcards



The Stand Pipe in Reservoir Park, Lancaster was the subject of this message to Esther Huber, "I can't remember if you have such one or not, hope you don't have. Aunt Hattie."

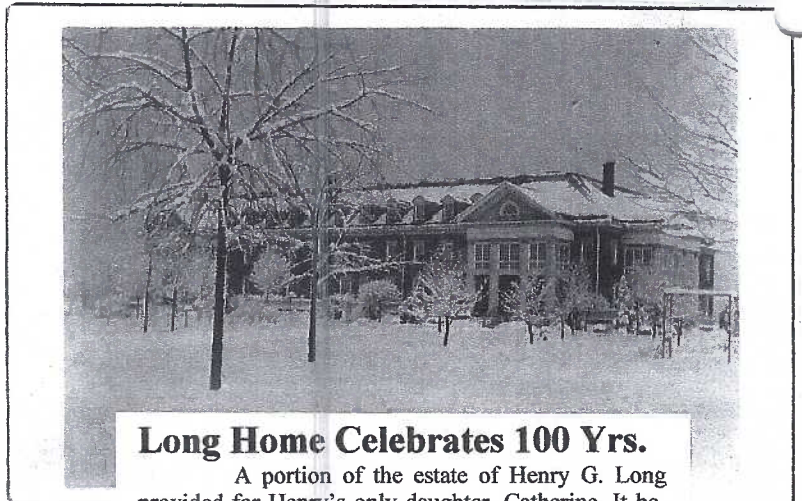
To Miss Florence Shaub, Strasburg, "Dear Florence, Our little friends and Sunday School pupil Earl Deets died. How much we will miss him. The funeral will be held on Wed. at 2 o'clock at the Strasburg Lutheran Church where his mother is buried. We would like to have as many of the S.S. pupils to be there and sit together as possible. We would be glad if you could be there too. Your S.S. teacher, Amos Ranck."

Miss Della Keen in Kirkwood received an unsigned postcard in 1919, "Yourself and friend are respectful (sic) invited to attend a part on Cpl. Ira H. Priest, West Willow, on Sat. evening Aug. 2th (sic) 7:30 sharp. Please come. Lunch party."

From New Holland to Eilla Mae Rohrer in Strasburg, "Have a package for you. It is to (sic) heavy to mail. If I go to Paradise on Sunday will bring it with me. Birthday

From Quarryville to Miss Zillah Leaman, Clark St., Lancaster, "We have nothing made out for Sun. so will suit for you to come. We don't have church in the morning. It is in the afternoon. Amos will be out to meet you. Cousin Lillie."

Miss Anna Rapp of Leaman Place received this invitation in June, 1917, "Dear Sister, Try and come up as soon as you can on Saturday. We are talking of going to Rocky Springs on Sat. afternoon. Come and be sure to stay all night. Did you see your humdinger lately? Ha, ha. Jennie."



A portion of the estate of Henry G. Long provided for Henry's only daughter, Catherine. It became an asylum or safe haven in Lancaster City "in which respectable white women from the City and County in indigent circumstances, above the age of 45 years, be-ing widows and single women, shall be admitted and maintained." In the 1970s revisions were made so the home now has 43 occupants including nine men (one Latino) and one black woman.

John G. Schaum owned an enterprising plumbing and heating firm in Lancaster. He used numerous local view postcards to advertise his business; this d/b view was printed by L.B. Herr.

An undivided back real photo PC shows a unique view of the Long Home, showing the North West End Ave. entrance. It was mailed March 5, 1906.

Another real photo, with a divided back, shows the home under a cover of fresh winter snow. Most of the Long Home PCs are labeled "Catherine Long Home", only a few are labeled "Henry G. Long."

Cover Cards and more

One of the better early postcards views of Trinity Lutheran Church in downtown Lancaster is this one by the Rotograph Co. The b/w view is #A 6148. Color varieties also exist. This view shows the old chapel south of the church, separated from the church by Mifflin Street.

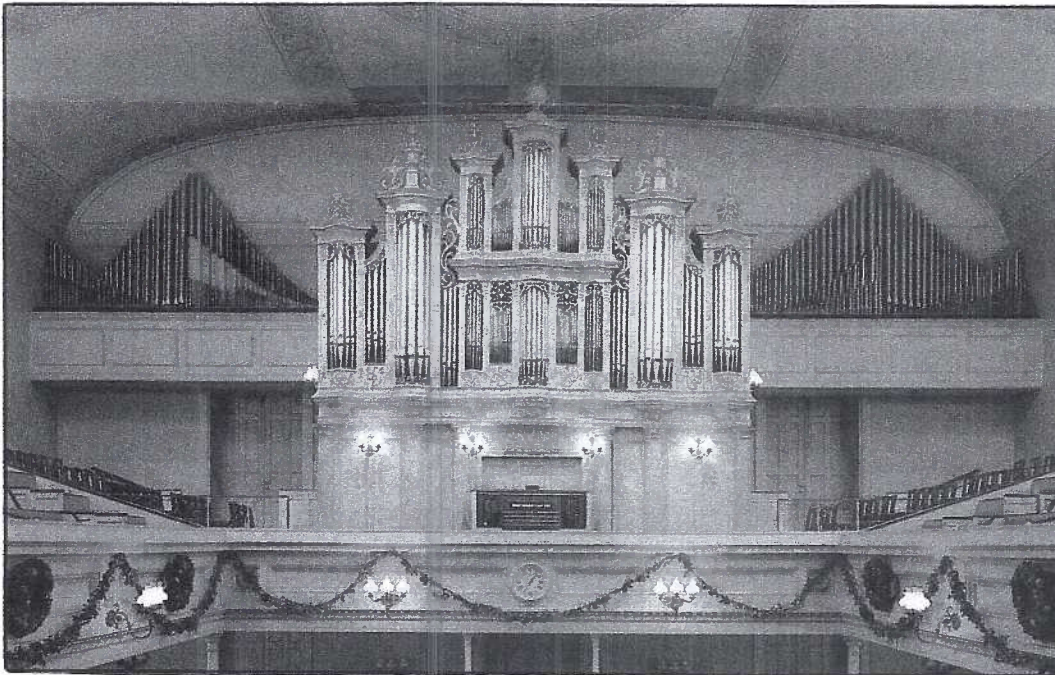
The 1774 David Tannenberg Organ is shown on a b/w card, upper right, by an unidentified publisher.

The alter end of the church interior is seen on a real photo with a G. L. Fon Dersmith copyright. The card has an undivided back.

A beautifully colored rally day postcard (lower left) was mailed to John Bryson, 118 N. Mary St. Most Rally Day cards urged youngsters and old alike to return to church following summer vacations. John is invited to the Sept. 30 service of Trinity Bible School. Unfortunately for us, there's no year date in the postmark.

By the time this chrome postcard was published, the windows on either side of the Tannenberg Organ (see b/w card on cover) were eliminated and a balcony with additional pipes had been installed. The PC is by Mel Horst Photography of Witmer, PA.

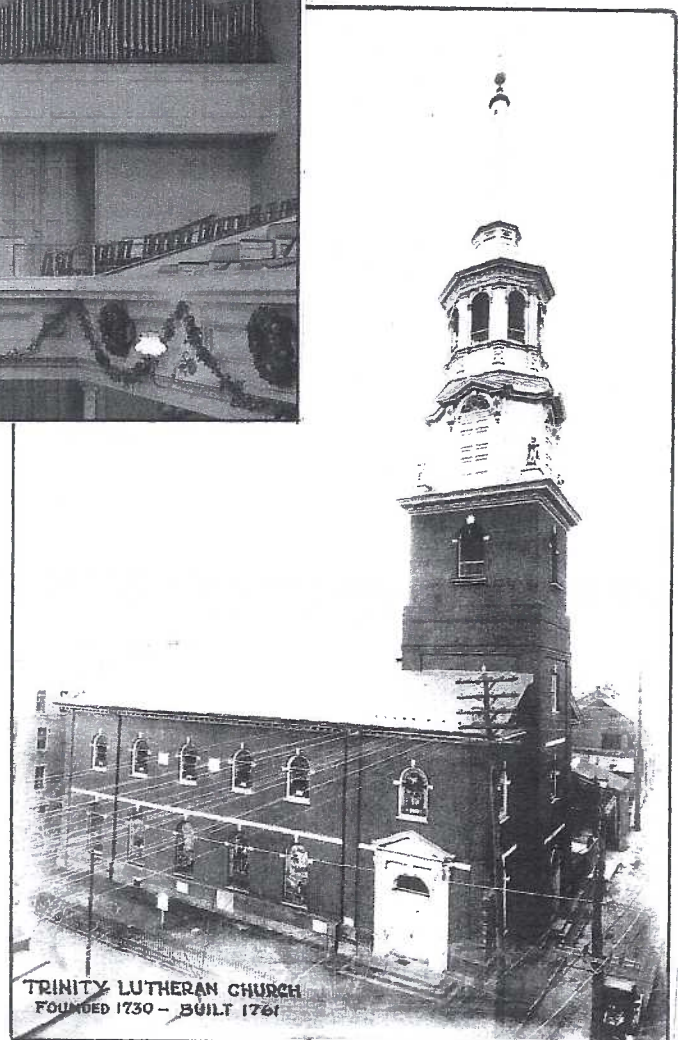
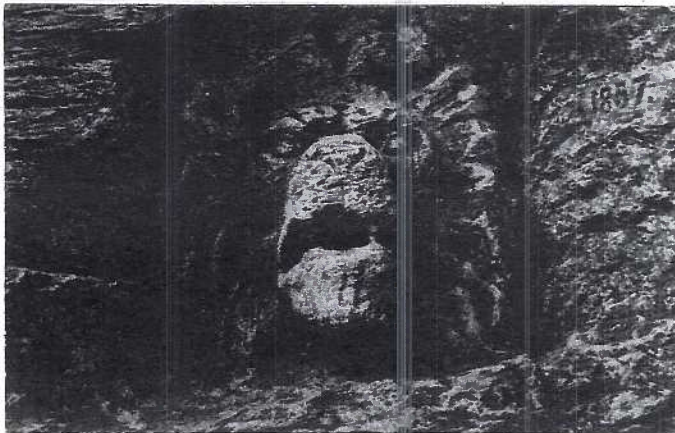
The final postcard, lower right, is a real photo view on photo stock made between 1926 and the 1940s. The old pick-up truck (lower right) on a brick-lined Mifflin Street suggests the view is from the late 1920s.



Lititz Park Destruction

Vandals deface 148 year old icon

On a recent April weekend vandals methodically chipped away the stone face of the lion in Lititz Park. Curt Teich PC #44702-C-N and a 1950s RP card is all collectors have of the town's treasure. It was carved by J. Augustus Beck in 1857. The 26-yr. old artist was inspired by the famous Lion of Lucerne. He had expected to replicate *that* monument but was forced to settle for only the lion head when confronted with tough native limestone. The lion face was to the right of the spring head near the steps. At this writing (Apr. 29) the perpetrators have yet to be caught.



TRINITY LUTHERAN CHURCH
FOUNDED 1730 - BUILT 1761

April Meeting, etc.

There were 58 members and guests attending the April meeting. We all thoroughly enjoyed the program presented by Betty Davis, editor of the Washington Crossing Card Collectors Club (WC4).

The Abbott Laboratory advertised its product, Sodium Pentathol, using postcards from 1956 through the early 1960s. There were 177 different postcards. Betty is eager to complete her collection and would be happy to hear from you if you have any from the later years. She is LCPC member #648 and can be reached at P.O. Box 52, Penns Park, PA 18943.

This was Betty's third presentation before our group and each one has been most informative.

With Sympathy

We're so sorry to hear of the death of Russ Holmes of Seven Valleys, York County. There could not have been a gentleman more devoted to the preservation of covered bridges. He and his wife Martha, who died last year, were keystones in the Theodore Burr Covered Bridge Society. Martha was a long-time editor of the journal and Russ was the society's treasurer for decades.

This 'n That

Tom Beck read a book review of Trolleys, composed by his wife, Betty. Thanks to both.

Dede Schaeffer reported, as she does every month, on future shows in the area.

Donated door prizes were won by John Rodkey, Shirley Summers and Theresa Jumper. Betty Kreider was the lucky recipient of \$25.50 in the 50/50.

Member/dealers set up and selling (they have been showing up as early as 5 PM) were Howard Steinberg, Mike Middleton, Al Schaub, the Moyers, Dede Schaeffer, Dick Bishop and Jim Ward.

May Program

While we're on the subject, the May program consists of **Member Free-for-All**. This means any member, regardless of how much or how little you have to sell in paper items (books, mags, pamphlets, etc.) as well as postcards, may take part of a table or a full table to sell mdse. without paying for the rental space. So do your spring house cleaning now and come early for the space you need.

June Program

The June program will be our **Annual Club Picnic** and this year it will be hosted by Barbara and Bud Heim on June 18 (Saturday) at their home, 783 Old Chickies Rd., Columbia. A map and additional details will be included with the June announcement.

From Rose Mary in Ohio, "You give us more information in one issue than appears in a year's worth of other postcard periodicals."

From Jim and Ellie in PA, "We are enjoying every page. It's really a great paper. Thanks for the very enjoyable reading."

The spring issue of the *Journal of the Postcard History Society* is available now. A year's subscription (four issues, 14 pages each) is just \$6 mailed to your home (\$9 for front pages in color).

Send your check to Jim Ward. 1795 Kleinfeltersville Rd., Stevens, PA 17578.

April Competition

WOW! Who'dah thunk it! The subject was Advertising on a single postcard (in honor of our April speaker) and we had a record turnout of twenty-three (23) participants!!!! That's just great!

Carol Dennis **FIRST** Rocky Springs PC with an attached felt pennant
Walter Mowrer **SECOND** Chas. Fry (Lanc.) on a Deeks mechanical showing horse and cow
Mary Darrenkamp **THIRD** Oscar Mayer Weiner-moble

Honorable Mentions

Doug Milliken Evans Hotel National Sanitorium
Theresa Jumper Seal Skin Cigars
Jim Ward Brass bedroom knockers
Dede Schaeffer Morgan Import. Co. - Steiff bears
Tom Schaub J.G.Schaum (Lanc.) pumps
Mike Middleton Krispy Krackers
Howard Steinberg Shirk/Son (Lanc.) Black/alligator
Ruth Moyer Chicken in the Rough
Anne Steinberg Benjamin #92 2-way plug
Dick Pendergrast Bloomingdale's Dept. Store
Bryan Benner Don's Central Tap
Don Jumper Kellogg's cereals
Jere Greider Vintage Coca Cola dispenser
Sandra Schaub Nestles baby food
Gisela Withers Int'l. Research Lab - virility potions
Martha Grove Antiques in Putnam County
Harold Moyer Budweiser horse-drawn beer wagon
Ray Dennis Bell Telephone Co.
Tom Beck Garvin's Dept. Store anniversary
Blanche Corrigan Metropolitan Life Ins.

Congratulations to all the participants and especially those members who don't often enter our monthly competition. **May's subject** is a real winner and a great chance for lots of participation. The subject is **POTPOURRI**. This means you can choose a favorite subject and make a board. You may use as few as a half dozen cards or fill the board with dozens of cards! The sky's the limit, but the subject is limitless!! Let's have more fun and don't forget cash prizes are always given: First \$3, Second \$2 and Third \$1.

Future Shows

May 27-28 Hagerstown, MD Plaza Hotel, 10-6, 10-3
May 30 Landisville Amos Herr Park, 5 to 3,600 stands
July 9 York, PA Aldersgate Church, Tyler Run Rd

Take time choosing your cards.

Think carefully about a title.

Now is the time to do both.

Here are the exhibit categories for Expo 2005:

- 1) Your favorite subject**
- 2) Children**
- 3) Humor**
- 4) Transportation**

Whether you specialize in Holidays, Pretty Ladies, Outhouses, Ships, Trains, Sports or whatever - there's a place for you in one of the four categories above. Start now!

Reservoir Park Celebrates 100 Years

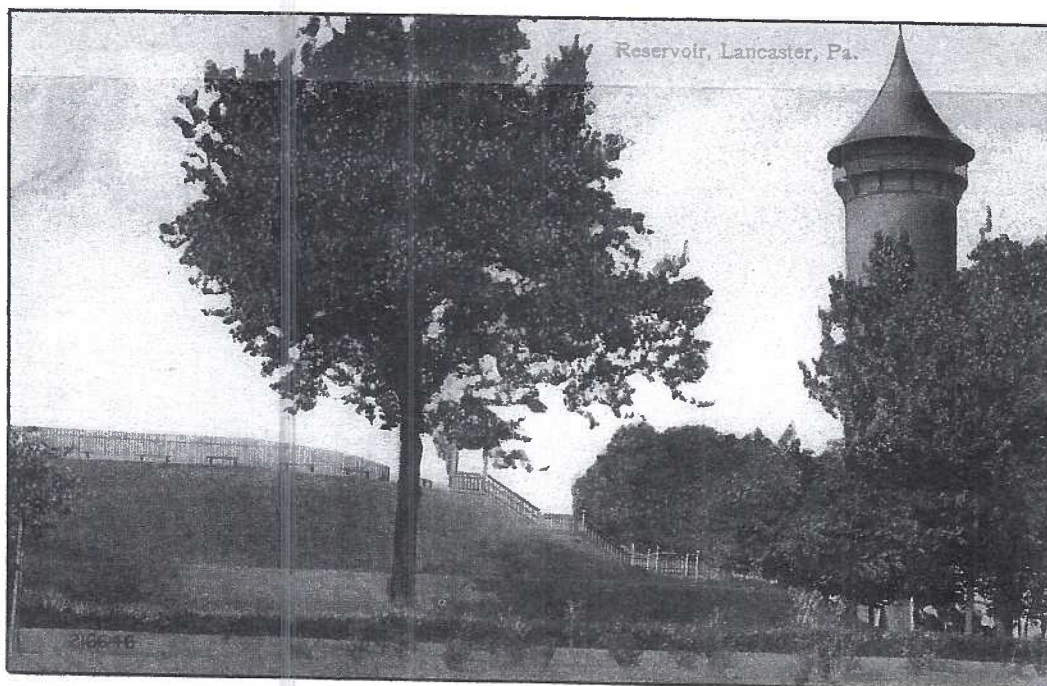
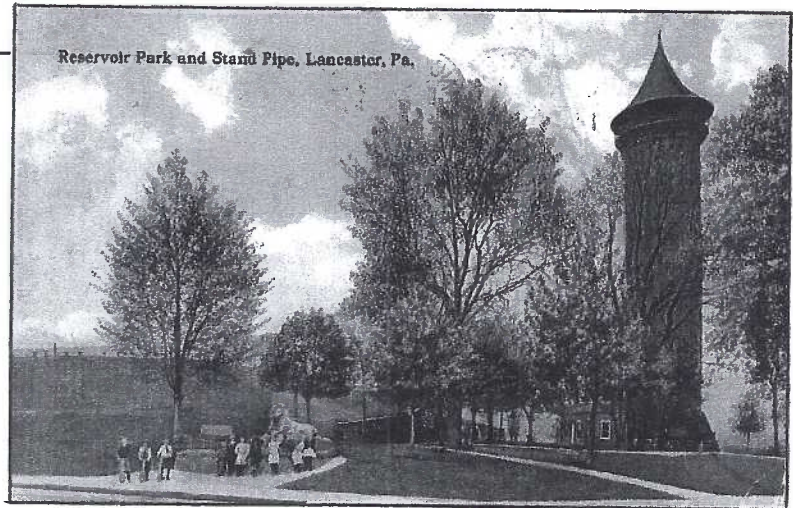
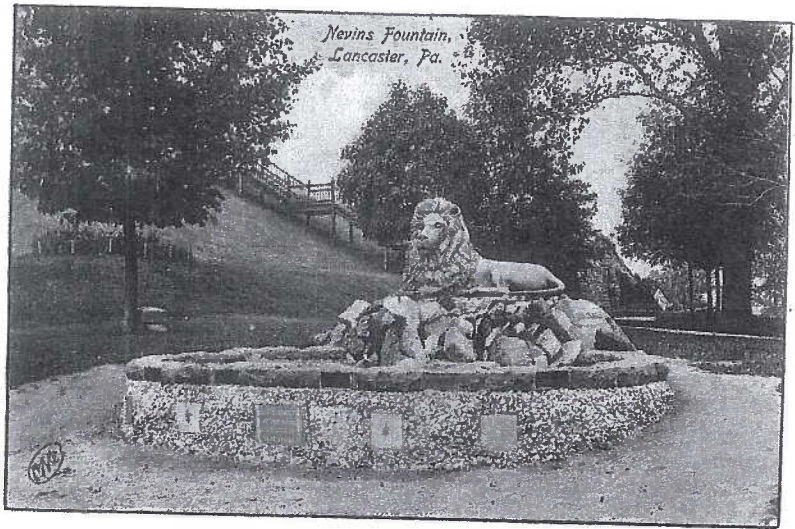
Reservoir Park was on the eastern side of Lancaster City. Buchanan Park was two miles away on the west side. The huge man-made reservoir gave this park its name. Dozens of postcard views can be found of Reservoir Park.

The Metropolitan News b/w card (top right) features Blanche Nevin's "spitting lion" fountain. To the right rear of the lion you can see the stone "den" where old-timers remember seeing the caged bear.

Postcard views concentrate on three features of the park. Curt Teich #A-52255 offers a good perspective of these three features – the lion fountain (behind the group of children), the water tank, and the high mound on the left that held the reservoir of water.

The D. B. Landis b/w view (left) is a winter view showing the path in 1911. You could walk around the reservoir (enclosed by the fence, left).

The Leighton & Valentine Co. card below (#216646) is another wide angle view. Youngsters, with a great deal of stamina, would race up the grassy hill, out-pacing their parents who used the stairs to reach the path at the top.



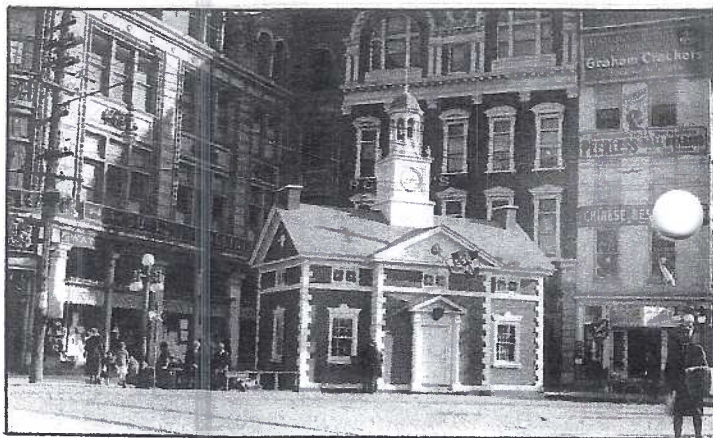
Buchanan Park Celebrates 100 Years

Postcards Record Its Monuments

The most recognizable feature of Lancaster City's Buchanan Park is the wooden building facing Race Avenue. It's a miniature replica of the old County courthouse that occupied the center of Penn Square during colonial times. The building has been refurbished to celebrate the park's centennial. The light cream color it sports is nice but not authentic.

The replica courthouse, constructed by Thaddeus Stevens Industrial School boys, was positioned in the Watt & Shand corner of the Square to sell Liberty Bonds during World War I. As you can see from this real photo postcard made at that time, the red "brick" of the original court house is apparent along with white "stone" cornices. The original tower was white except for the roof.

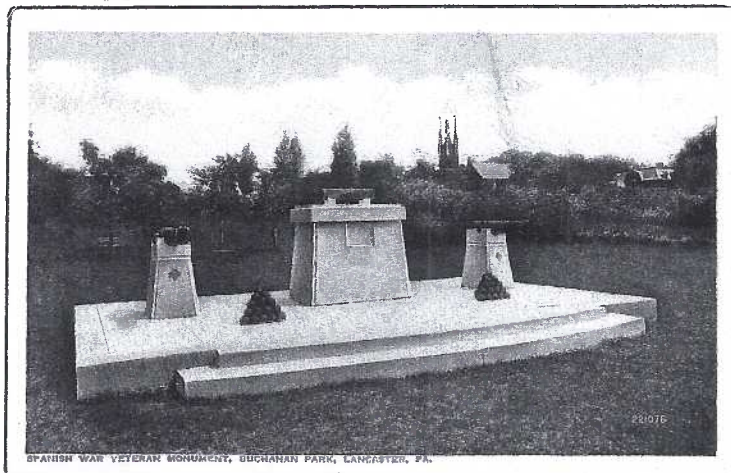
Unfortunately there was never a postcard made of the little court house as it stands in the park. There are, however, at least a dozen cards focusing on the park's other features. Heading the list is the monument honoring Spanish American War veterans. Com-



mercial Color issued #33761 with and w/o a white border. The National PC Co., Union News Co. and Valentine-Souvenir Co. published at least one postcard each, all in color. In the Valentine-Souvenir card (shown top left) you can see the tower of F & M's Old Main on the horizon. Landis Art Press of Lancaster

was added on top, in this real photo PC which has a 1926 - 1940's stamp box. Dexter Press published a similar view using their deckled edge format (see their view of the water storage tanks).

President Buchanan, for whom the park is named, appears on at least three PCs, two white border type, published about the time the statue was erected in 1928. One is Curt Teich #OA4488, shown; the other is Tichnor #133838. It shows nearby Wheatland as well as the statue in the rose garden. A real photo



PC also exists. It has vertical orientation and was made long before the rose garden was planted.

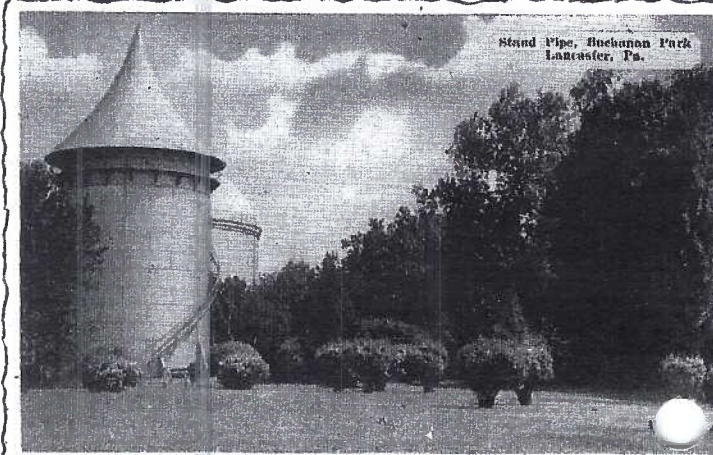
Finally, Buchanan Park had, from 1925 until 1996, two huge water storage tanks. These are recorded for posterity on #10717, a b/w postcard type developed by Dexter Press with a deckled edge.

Other features in Buchanan Park include a keystone-shaped monument that pays tribute to mem-



also printed and published a single view of the Sp.-Am. memorial using a b/w photo by the Geo. Wolf Photo Studio of Lancaster.

The second card on the left is the same monument! Sometime in its history, the powder tank (retrieved from the USS Maine*), as well as the two piles of cannon balls were removed or stolen. The soldier



bers of a local ambulance corps who served in WWI and two monuments honoring local sports figures.

*Jack Brubaker, member #485 and Lancaster New Era's Scribbler, helped your editor considerably with the history of this re-named monument.