

**THE CARD - Vol. 16, No. 6. Issue 186. June 2005.**

Monthly Publication of the Lancaster County Postcard Club, Lancaster, PA.

*Enjoying postcards through education and entertainment.*

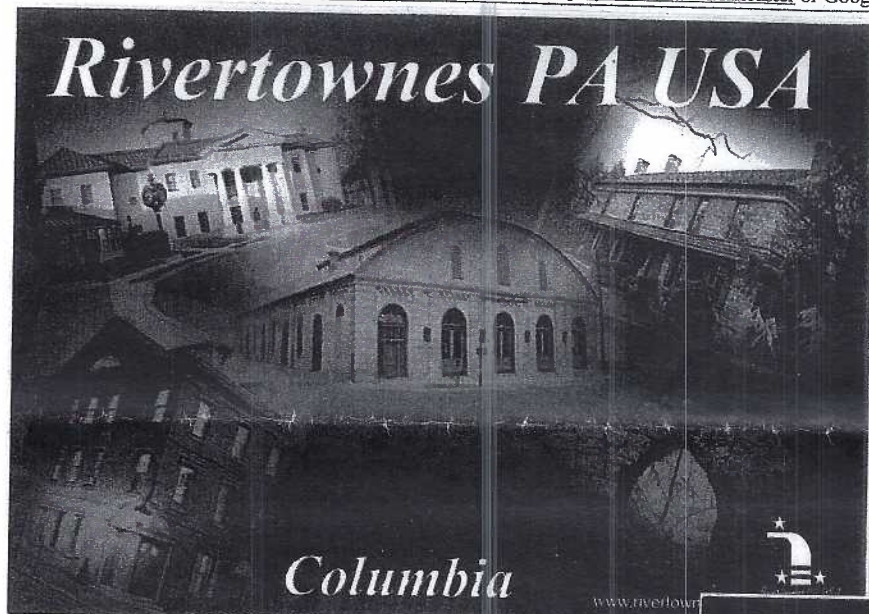
Next Meeting: **Sat., June 18, 2005. Annual Picnic at Heim's home. Noon to ? PM**

Yearly membership is \$10 (\$5 for each additional member at the same address.)

Make checks payable to LCPC and send to Betty Beck, 11 Cinder Hill Rd., Lititz, PA 17543.

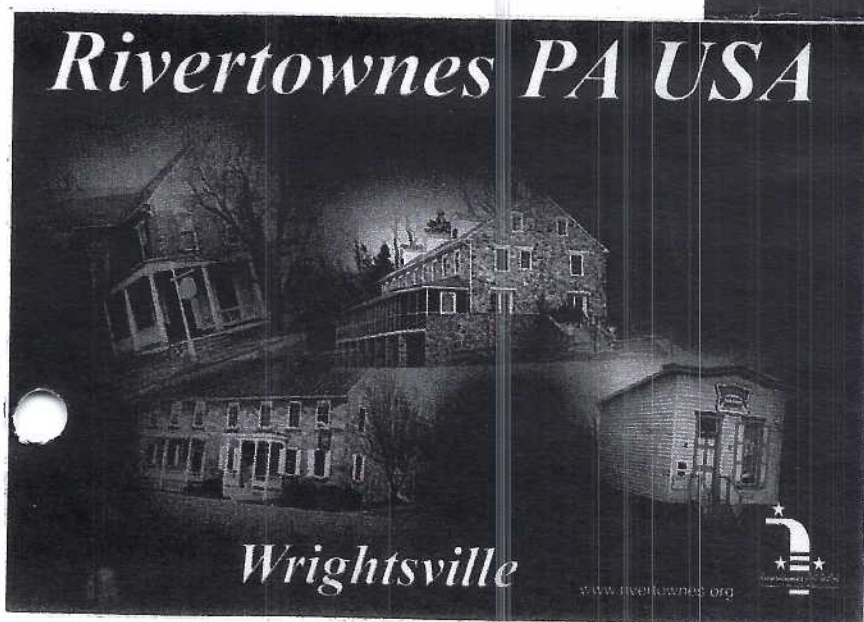
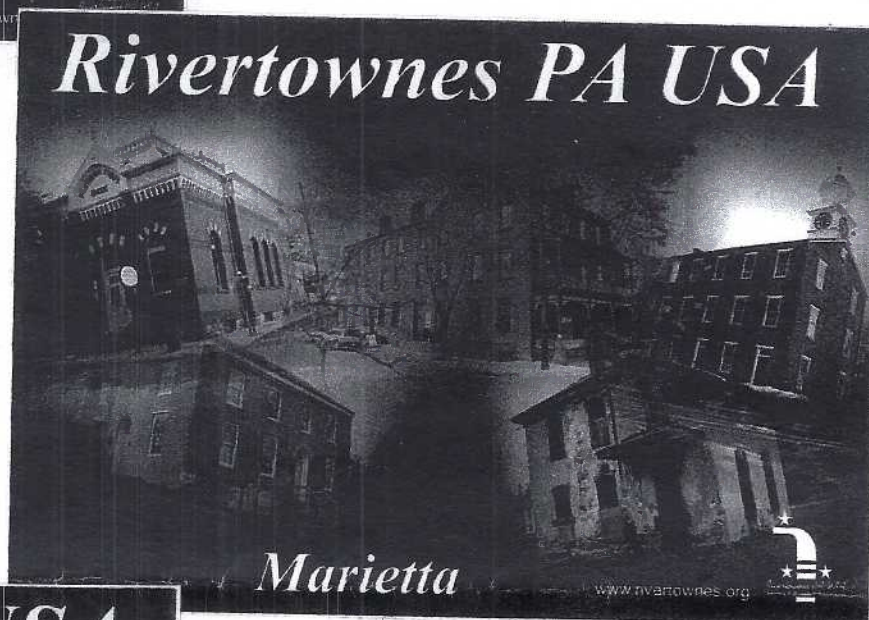
Club and Editor's address: LCPC c/o Jim Ward, 1795 Kleinfeltersville Rd., Stevens, PA. 17578-9669 or [midcreek@ptd.net](mailto:midcreek@ptd.net).

Club website: [www.playle.com/clubs/lanaster](http://www.playle.com/clubs/lanaster) or Google search: lancaster county postcard club



**NEW SET of  
LOCAL CARDS**

*Story on Page 3.*



**CLUB PICNIC  
SAT., JUNE 18**

*Details on Page 5.*



## Messages on Local Postcards



HOTEL BRUNSWICK, LANCASTER, PA.

One Sat. evening in 1948, poor Elmer writes from Philadelphia on the Hotel Brunswick card above, to Mrs. Florence Russell in New Holland, "I got home by noon time. Had to sit along side the bus driver on the floor all the way down and leave my feet hang down. Glad I did not wait for a later bus. Mae came home last evening and had all the shopping done when I got home. Elmer"

From Refton to Kirkwood, Feb. 1910, "Just a few lines to tell you we are all living and real well. Hope you folks are the same. This has been an ugly cold Sun. Hope it will be warmer tomorrow. Sam will finish stripping tobacco next week and it is sold. I know he will be glad when it's done. Do not know when we will be down. Come up when you can. Lovingly, yours, Mame."

Miss May Lehman, Mountville, received a short, cryptic (and also unsigned) PC note in August 1908 - "You can give me that ring at Manner (Manor) Camp Meeting."

*What may appear much ado about nothing to some of our readers was important to folks when the following PC message was written in 1915. Church was an important part of people's live. Many rural churches alternated preachers (and congregations) and so one "had church" every other week.*

Dear Ella (Mrs. Jacob Herr, R. 4, Lank.) I wrote to Belle and told her it would not suit us on that Sunday. I did not think about that it was church Sunday here. She always asks us on that Sunday. I made up my mind not to go visiting on that Sunday unless we go to church first. I wrote to her and told her it will suit the following Sunday, the 12<sup>th</sup> Sept. I told her to write to you as I thought it would suit you just the same. Anna is going to a crowd\* this Sat. and Sun. Come down the next Sunday. Mother.

\*most likely a teen gathering/songfest, an important means for young people to get acquainted in a wider geographical range.

### Optimists' Request

For a number of years Doug Milliken's Optimist club has welcomed metal tabs from soda cans. Now the Optimists will also happily receive your used printer cartridges. Bring them to the meetings for Doug or contact him at [dmilliken@mindspring.com](mailto:dmilliken@mindspring.com) or 717-295-3135.



## Donald A. Davis

1918 - 2005

### 1993 LCPC President

We were in our toddler years when Don Davis took over the reins of leadership in LCPC. He was retired from teaching in the art department at Millersville University and now we would be honored recipients of his dry, but welcomed wit. Don's anecdotes often included his roots in Hatfield, PA - home of Hatfield Meats.

Don was a faithful participant in our monthly card competition and, more often than not, he could smuggle his favorite subject - comic cards - into the theme. Of course, we looked forward to hearing his reason for doing so.

A good sense of humor seemed (to this writer) to be Don's reason for living. He could see the brighter side of life in every situation, although he recalled one time, while sitting in a restaurant he made eye contact with a man passing his table. Don cheerfully asked, "How are you?" The man's quick retort, "If I tell you, you'll send me a bill the first of next month!" It was one of the few times Don was left speechless.

Many of you don't know it, but it was Don who came up with the basic idea for our club's logo back in 1990. His rendition of a covered wagon, according to one charter member, "looks more like a prairie schooner." Don cheerfully replied, "Heck, I'm from the mountains. I don't know what a Conestoga Wagon looks like. Sure, go ahead and change it." And so we did.

We'll miss LCPC #19; in fact, we've missed him this past year. We offer our sincere sympathy to his wife, Marty.

\*Member #66, Jim Rudisill, is the talented artist who made silhouettes of some members in our early years. This one of Don Davis was done in 1994.

## FUTURE SHOWS



**June 5 Danville PA** Susquehanna Valley Post Card Club's 20<sup>th</sup> Annual Show. Day's Inn, Exit #224 of I-80 and Rte. #54. 9 to 4.

**July 9 York PA** York Post Card Club's 15<sup>th</sup> Annual Show. Aldersgate Church, Tyler Run Rd., off South Queen St., 9 to 5. \$1.50 adm., **save 50¢ by using the colorful adv. postcard included with this mailing.** Several LCPC member/dealers set up at this show.



## Cover Cards

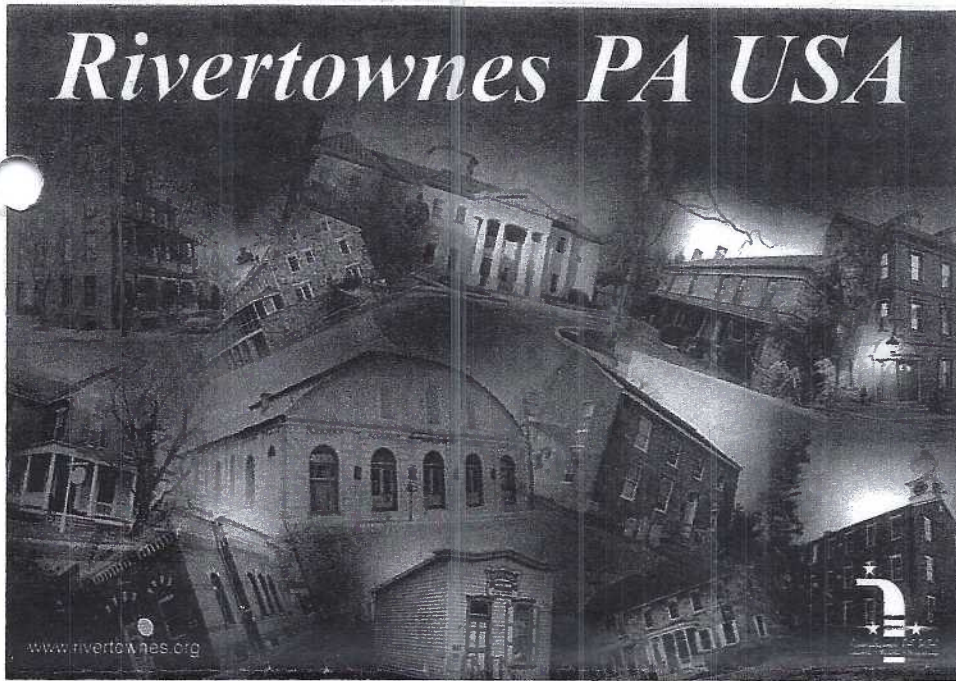
### Rivertownes PA USA

At the May meeting Dede Schaeffer reported on the publication of a new set of postcard views. We've shown three of the cards on our cover; the fourth is shown here, actual size. (Note the card is just 5" wide. Does this meet the minimum requirement for USPS delivery?)

Rivertownes PA USA is headquartered at 495 Kinderhook Rd., Columbia, PA 17512. When you come to the picnic (page 5) Bud and Barbara can tell you how to get to the headquarters. It's close to their home north of Columbia.

Dede noted the PCs are reasonably priced at \$1 for the set of four. Each of the three cards on our cover briefly covers the founding of the river towns. The fourth card, a composite, stresses that "the mission of Rivertownes PA USA: to promote and preserve the culture, heritage and related commerce and recreational activities" of the area.

History buffs will appreciate the towns' website at [www.rivertownes.org](http://www.rivertownes.org). There you can see pictures of the eleven iron furnaces of western Lancaster County as well their present day remains. *Furnace Stories* offers encyclopedic knowledge in a nut shell and well worth a trip to the website.



## Reservoir Lion's 100<sup>th</sup> Birthday Carnival

*Submitted by Betty Beck*

On June 18, 2005, the John W. Nevin Memorial Fountain, also known as the Saints and Sinners Fountain, will be dedicated. Held from noon until 5 p.m., the ceremonies will include an antique carousel organ, a magic show, Peter Moses of "Kids Music Experience," Mr. and Mrs. Uncle Sam, a barbershop quartet, remarks from local dignitaries and citizens, and a visit from "Blanche Nevin," the woman who sculpted the fountain in memory of her father a century ago. The program will begin at 2 p.m.

The rededication ceremony is modeled after the original ceremony that took place a century ago, including a prayer of blessing as the waters are once again turned on.

Two of our club members, Tom and Betty Beck, were responsible for the publication of a commemorative National Postcard Week postcard, which is jointly sponsored by the East King Improvement District (EKID) and Thaddeus Stevens College of

Technology, who printed the postcard. Originally, Tom had wanted to publish an NPW card of the lion, but when he became aware of the celebration, he offered his card to the EKID. The picture, taken by Betty with text by Tom, shows the plaque in front inviting Saints and Sinners to refresh themselves at the fountain.

This June 18<sup>th</sup> celebration will start the revitalization of Reservoir Park over the next several years, making it more of a neighborhood park. Co-operating in the effort are Tabor Community Services, Housing Development Corp., Thaddeus Stevens College of Technology, Lancaster Alliance, SACA Developing Corp., and the Inner City Group.

Many commemorative items will be offered for sale including the postcard, a t-shirt, coffee mugs as well as the book, *Celebrating the Legacy: 100 years of the Thaddeus Stevens College of Technology*.

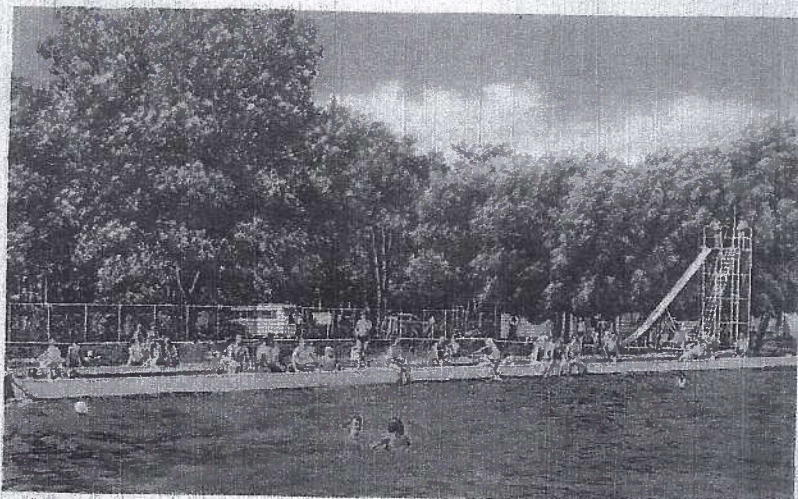
## Summer Fun

The Medici Society Ltd. of London published delightful works by a number of artists. *A Game of Croquet* is by Racey Helps.





## Messages on Local Postcards



June 20, 1944, To Mountain Lake Camp, Fannettsburg, PA. "Dear Miss Huston, Here is a picture of the Brookside Pool. Don't you wish you were swimming in it? At 2:40 the bus will come to take me to the hairdressers. I am going to get a curly cut at 3:15. Please cross your fingers for me.

I received your postcard this morning. I'll give it to Marion for her collection. Love, Winnie."

Lanc., Oct. 8, 1913, to Mr. Austin Harple, Bareville, "Dear Cousin, A friend, Mr. Hohmannn, the barber, wishes four Norway maple trees (\$1.25). We will not want any as Dad is getting a good sized one near where he works. Maybe my friend and I will take supper with you Sat. eve. We are going to drive if the weather is not too cold, but tell Sallie not to go to any trouble. We won't have much time to spend. Gussie."

From Soudersburg, Oct. 9, 1917, to Pvt. Frank P. Wenger, Camp Meade, MD "Dear Brother, I am still going to school. I wish I could see you in your army suit. From your loving sister, Lillie.

Within Manheim, Nov. 27, 1911 to Miss Alice Heisey, "Remember now and bear in mind  
A pretty boy I shared to find.  
And if you find one jolly and gay  
Stick to his coat tail night and day.  
A Friend...Guess."

Elizabeth Livengood in Lanc. received bad news in 1910, "Dear Sister, Some person phoned hear (sic) from Columbia that Emma Naum's nephew died and is getting buried on Friday at half past two. Your brother, Chester."

Within Quarryville, Mrs. Martin Eshleman received this 1910 message, "Abbie, I guess you found my black mittens on the bed or somewhere. Would you please keep them for me or if you could send them I will be very glad. Yours truly, Susie."

### Selling *WINDOWS II*

The vacation season is here. When traveling to visit friends and relatives, put your copy of *Windows II* in your car, and maybe a second copy or two. Members who sell our book on a regular basis know it sells itself if a potential customer has the opportunity to look through it for a few minutes. Retail is \$30. Your cost is \$25. Contact Ray Dennis at 717-290-7948.

## May Meeting

Free-for-All night began with set-ups by thirteen members, all of whom had enough material to occupy full tables. As is often the case, 55 members were able to find bargains in not only postcards but valentines and scraps, trade cards and maps, paperbacks, pictures and photos, too.

### Sellers

Set-up and selling were Tom Schaum, Ruth and Harold Moyer, Dale Shaub, Dick and Marion Bishop, Bob Kramer, Maria and Win Schurz\*, Al Schaub, Carol and Ray Dennis, Mike Middleton, Don and Theresa Jumper, Dede Schaeffer, Bill and Becky Buckwalter and Jim Ward.

\* It was good to see Maria and Win back after four months and 11,000 miles of touring the USA in their RV; it was also so good to see Ray Bubb back with us.

### Book Review

Dede gave a book review of Frank Staff's *Picture Postcards and Their Origins*. Staff is considered one of the top postcard authors -- world-wide. His book should be required reading for anyone interested in talking intelligently about our hobby.

### Winners

Mary Darrenkamp and Jim McMullin won door prizes (flowering plants) and Maria Schurz won \$20.50 in the 50/50. (Win said "it will help." Their RV took 45 gallons of gas every time they stopped. Ouch!)

### May Board Competition

The subject, Potpourri - anything you desire, didn't encourage as many boards as you might expect.

**Jim Ward FIRST** Lancaster Trolleys (He forgot to bring it last Nov. when the subject was the letter T. It pays to be patient.)

**\*Tom Beck SECOND** Derrieres (Pronouncing the title proved a problem to Chairlady, Ruth, but then many of us would have stumbled, too.)

**\*Harold Moyer SECOND** The Month of May is... (...NPW cards, Mothers Day and Memorial Day. Harold noted the Tuck set was actually labeled Decoration Day.)

**\*Without checking 15+ yrs. of records, we believe this is the first time two Second Place awards have been given. Three times there was a tie on the two boards!**

**Betty Beck THIRD** Edelweiss (Betty had just bought a live edelweiss plant. Talk about instant inspiration.)

### Honorable Mentions

**Ruth Moyer** A Good Place to Be ... (Ruth's cards were colored generics and over-printed for the village of Hopeland, PA)

**Mary Darrenkamp** Ashtabula County, Ohio (Mary is LCPC's most avid covered bridger. Theodore Burr CB Society's summer safari will be to Ashtabula County's covered bridges.)

**Bryan Benner** California Redwoods (Botanist Bryan was bound to choose as green grower. He couldn't have chosen anything bigger.)

The subject for June's competition is **Amusements or Amusement Parks**. Just a single card is needed, so start thinking and searching now. Plan ahead: July - Patriotic (single); Aug. - Gardens or Gardening (S); Sept. - A favorite RP postcard (S). *Ed. Note:* I stand corrected on monthly competition prizes. They are: 1<sup>st</sup> place \$5, 2<sup>nd</sup> = \$4 and 3<sup>rd</sup> = \$3.

# ANNUAL LCPC PICNIC – Sat., June 18

**Where** – Bud and Barbara Heim's home, 783 Old Chickies Road, just north of Columbia. See map.

**How** – From the East, South and West, exit Rte. #30 to Rte. #441. Go north and take the first right on to Breezyview Rd. Go to the T and turn left on to Old Chickies Rd. Heim's drive is on the right. From the North, exit Rte. #441 at Breezyview Rd. and proceed with above directions.

**When** – Noon to 5 PM.

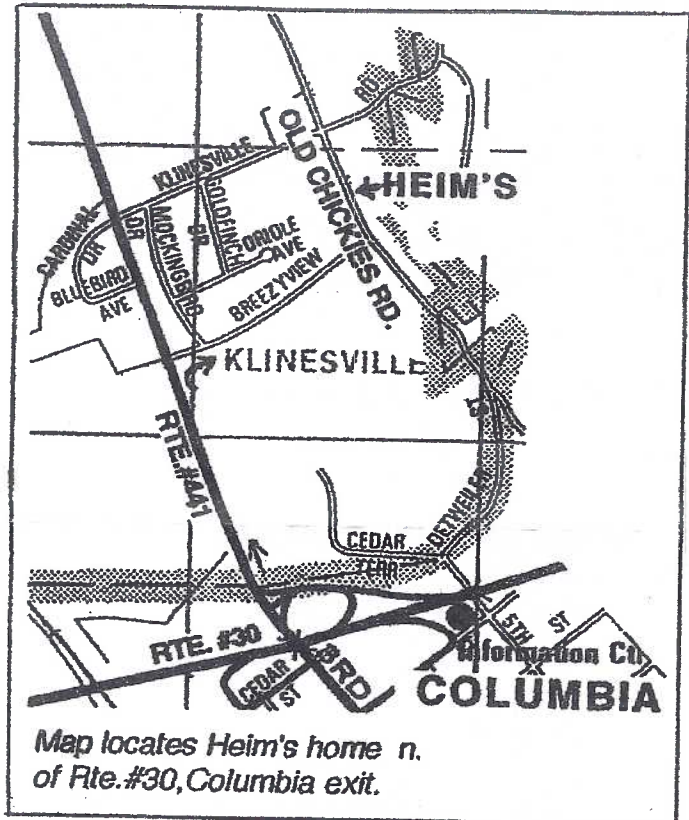
**The Meal** – Start arriving at noon. We will begin eating about 1 PM (earlier than in 2003). Bar-b-que and drinks as well as place settings will be provided by the hosts and LCPC. You are asked to bring lawn chairs, a hot or cold covered dish along with serving utensils. Weather needn't be a factor. There are facilities for rain or shine.

**Who** – Any member and guests. Bring PC albums to pass around or PCs to sell (provide your own table).

**What** – Following the meal will be the usual door prizes, 50/50 drawing and single card competition – Amusements or Amusements Parks.

**Program** – The program will be a White Elephant Sale. If you are not Hindu, a white elephant is anything you'd be happy to give up. This could include used (but not damaged) items like "hand-me-downs" you no longer have a use for; new gifts you can't find a home (or wish you hadn't received); crafts and gadgets you're happy to contribute.

**\$\$\$\$ For LCPC** – All of these Treasures will be auctioned by a club volunteer (with back-up when needed). Proceeds go the LCPC's treasury. This "program" proved to be great fun in 2004. Last year the 50+ items netted more than \$150.



## 2005 EXPO EXHIBIT ENTRY FORM

Mail or give this entry form to Ruth Moyer, Expo Exhibit Chair, on or before August 14, 2005. She can be contacted at 135 Whitehall Rd., Reinholds, PA 17598; E-mail to [rsm@dejazzd.com](mailto:rsm@dejazzd.com) or phone 717-336-6644. You are encouraged to enter all four categories. If you intend to use two boards (maximum) for any one category, please note this below. Include your title under the appropriate category.

Judges, selected from among the dealers on Saturday morning before the show, will consider the following criteria:

<b>Postcard Information</b>	1/3
<b>Presentation and Originality</b>	1/3
<b>Condition, Completeness and Rarity</b>	1/3

Exhibit boards should be at the Farm & Home Center Friday night, August 19 between 6 and 7 PM; last possible entry time is Saturday, August 20, 8 AM. NO EXCEPTIONS. You may also give your boards to Ruth beforehand if necessary. Do not cover your boards. LCPC will provide each board with a new plastic bag.

*First, Second and Third Place Awards* receive \$15, \$10 and \$5 cash in each category. *Best of Show*, chosen from the First Place exhibits, receives \$25. *Peoples Choice*, chosen by the public's ballots, receives \$25. Each entry receives a specially designed 2005 Expo Postcard Award.

I will have an entry in the categories listed below with these titles –

**MY FAVORITE SUBJECT** \_\_\_\_\_

**CHILDREN** \_\_\_\_\_

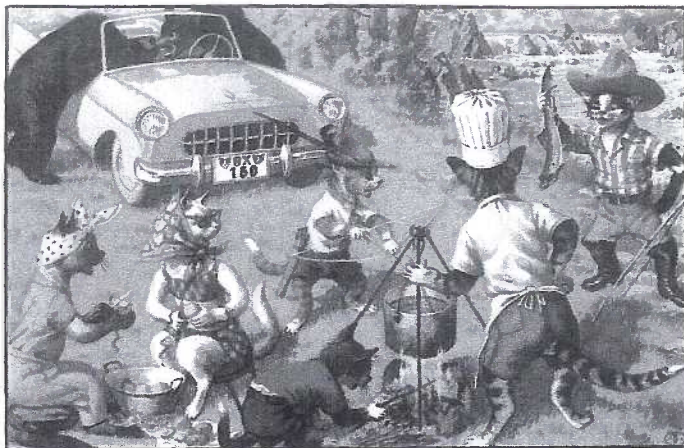
**HUMOR** \_\_\_\_\_

**TRANSPORTATION** \_\_\_\_\_

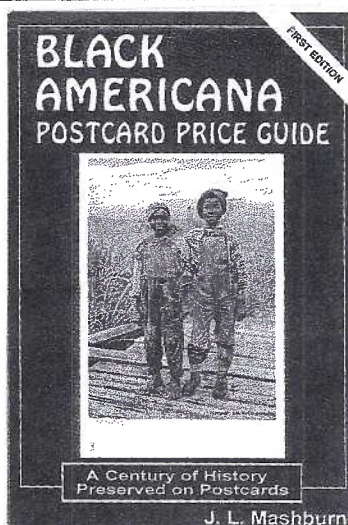
Member's Name \_\_\_\_\_

Phone Number \_\_\_\_\_ E-mail \_\_\_\_\_





Editor's Note: The club's librarian is Carol Giona. She has offered to write a column about books in the LCPC library for *The Card*. If you would like to borrow the book reviewed here, call Carol at 1-717-464-1410. She will contact a member of the Library Team and have the book available at the next meeting.



### Library Highlight

### **BLACK POSTCARD PRICE GUIDE** By J. L. Mashburn

*One of the first postcards portraying African Americans was released at the 1895 Cotton States and International Exposition in Atlanta. The card pictured the Expo's "Negro Building." It was most likely built to show the harmony between blacks and whites living together, the progress being made by the Negro in the south, and the availability of inexpensive labor to encourage industry to move to the south. All of these cards are extremely rare and belong to the Pioneer Era. The Negro Building card is most prized and valued between \$350-400.*

*The greater majority of postcards portraying African Americans were*

### **Fun and Games Guaranteed**

at our club's Annual Picnic this year at Barbara and Bud Heim's home, Sat., June 18. Our picnic postcard is #4922, published by Alfred Mainzer of NY and printed in Belgium.

*published from 1908-1914, which were the most prominent of the postcard's "Golden Years." These pictures of blacks played an important role in recording their social history and lifestyles during the early times.*

*Black history was also recorded on postcards for the U.S. market by hundreds of artists, both here and abroad. Many of the better artists pictured them as beautiful, playful children and well-dressed, fun-loving adults. However, some produced cards that stereotyped them in insensitive ways. These vulgarities continued well into the 1960s before merchants refused to sell them.*

*Many real photo postcards tell a great part of the true story of blacks in the years between 1900-1940. They reveal them as proud, well-dressed working people in various jobs or positions; adorable babies and children; black soldiers serving their country; and families attending religious functions. They show minstrels, bands, athletes, and students in school and college. These photos seem to illustrate the lighter side of their struggles for equality.*

*This comprehensive price guide has been uniquely designed to serve both the needs of the beginning and advanced collector, as well as the established postcard dealer. It dates from the 1890s-1960s making it possible for the novice collector to consult it with ease in finding each listing.*