

# THE CARD - Vol. 16, No. 7. Issue 187. July 2005.

Monthly Publication of the Lancaster County Postcard Club, Lancaster, PA.

*Enjoying postcards through education and entertainment.*

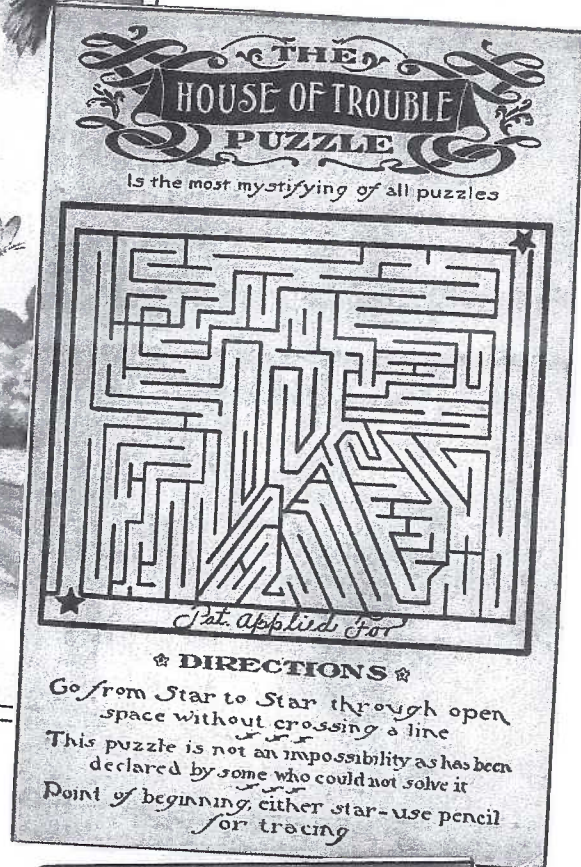
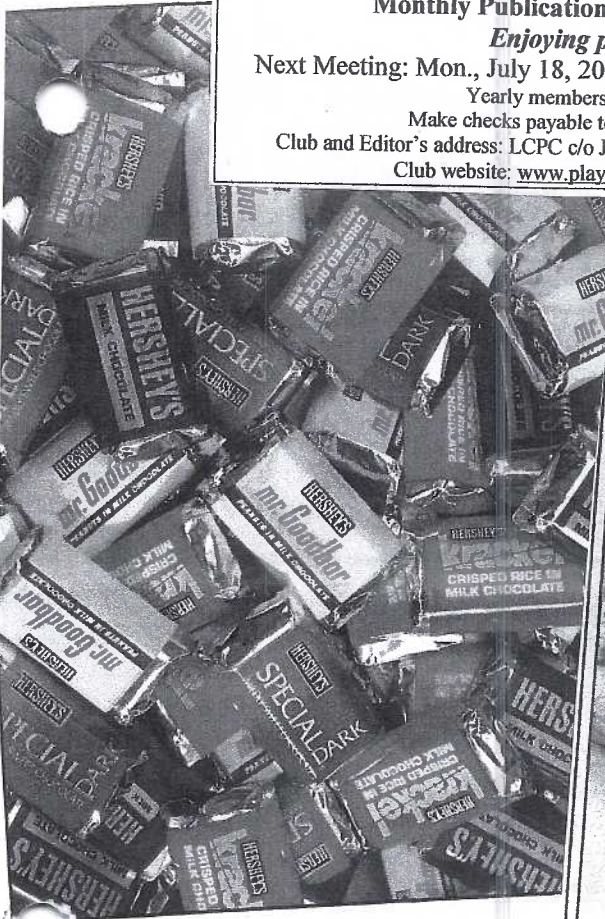
Next Meeting: Mon., July 18, 2005. Farm & Home Center. Buy, sell, trade from 5:30. Meeting at 7 pm.

Yearly membership is \$10 (\$5 for each additional member at the same address.)

Make checks payable to LCPC and send to Betty Beck, 11 Cinder Hill Rd., Lititz, PA 17543.

Club and Editor's address: LCPC c/o Jim Ward, 1795 Kleinfeltersville Rd., Stevens, PA. 17578-9669 or [midcreek@ptd.net](mailto:midcreek@ptd.net).

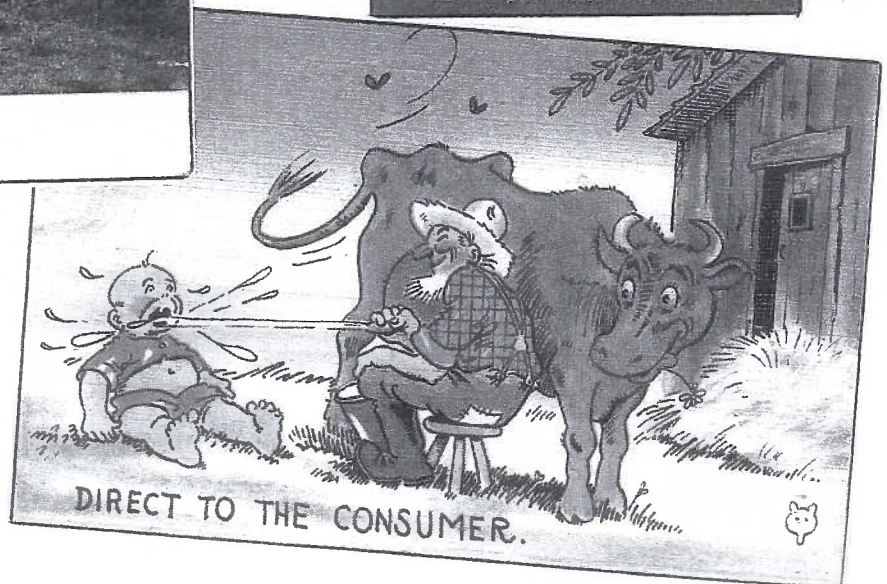
Club website: [www.playle.com/clubs/lancaster](http://www.playle.com/clubs/lancaster) or Google search: lancaster county postcard club



A GIANT TRACTOR.



What have these postcard subjects in common? More inside along with answers.





## Annual Picnic Wrap Up

The weather couldn't have been better. The venue - at the Heims' home - was very convenient. Only a multitude of other events, esp. Father's Day weekend, kept the crowd to just fewer than 30. Even so, these members enjoyed looking at albums, buying from Walter Mowrer and Jim Ward's cards, the just-as-anticipated array of summer foods and general socializing.

Speaking of which, who would show up but our West Coast migrants, Mary Ann and Bill Guntow. It was so very good seeing them, if only for a few hours. Also, Cheryl and Richard Edwards ventured up to Columbia from Kensington, MD. Also attending from closer by were Ruth and Harry Lines, Blanche and Chet Corrigan, Ruth and Fred Yohe, Ruth and Harold Moyer, Doris and Dick Pendergrast, Cookie and Jere Greider, Barabra and Walter Mowrer, Anne and Howard Steinberg, Sharon and Keith Gromis, Mary Darrenkamp, Charlie Schiefer, Bob Dissinger, Jim Ward and of course, our generous hosts, Barbara and Bud Heim.

### Monthly Card Competition

June's theme, on a single PC, was Amusements or Amusement Parks.

**Walter Mowrer** FIRST Rocky Springs, Lanc.  
**Barb Heim** SECOND Chickies Park, Columbia  
**Ruth Moyer** THIRD\* Helter Skelter at Coney Island  
**Dick Pendergrast** THIRD\* Coney Island Railway

#### Honorable Mentions

**Blanche Corrigan** Mainzer cats at the shore  
**Jere Greider** Ferris wheel at Coney Island, Cin. OH  
**Harold Moyer** Hershey Park  
**Mary Darrenkamp** A Wisconsin carousel  
**Doris Pendergrast** Entrance to NY Coney Island  
**Cookie Greider** An Ohio amusement ride  
**Bud Heim** Highland Park, York

\*after three tied ballots, we decided both should win

#### White Elephant Auction

Begun in 2004, a White Elephant Auction proves to be lots of summer fun. In addition to saving hall rental money, we're always able to make a little donation to the club's treasury. This year's bidding totaled \$75. It came from the sale of beautiful crafts, spectacular jewelry, bargain household gadgets, a box postcards and a half Pc views of Landisville camp grounds. LCPC thanks the anonymous donors for their generosity. It's very much appreciated.

Walter Mowrer donated his time as clerk and cashier. Jim Ward attempted to pull teeth as the auctioneer.

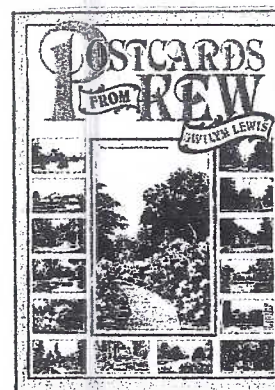
### Future Monthly Competition Themes

S = single postcard; B = board of postcards

July Patriotic (S)  
 Aug. Gardens or Gardening (S)  
 Sept. A favorite Real Photo postcard (S)  
 Oct. The color Orange (S)  
 Nov. Something for which to be Thankful (S)  
 Dec. Angels (S)

Note how many months the requirement is just a single card. This should make it a more inviting search for many members whose collections are not extensive. The more participants, the merrier!!

Editor's Note: The club's librarian is Carol Giona. She has offered to write a column about books in the LCPC library for *The Card*. If you would like to borrow the book reviewed here, call Carol at 1-717-464-1410. She will contact a member of the Library Team and have the book available at the next meeting.



### Library Highlight

#### POSTCARDS FROM KEW

By Gwilym Lewis

*The Royal Botanic Gardens, Kew, date from about 1730 when George II and Queen Caroline took possession of Richmond Lodge, and their son Frederick, Prince of Wales, acquired Kew House. In 1759 Frederick's widow created a small botanic garden on nine acres on land.*

*It was during the reign of George III, who succeeded his grandfather in 1760, that the two estates were joined and the botanic garden became famous largely due to the efforts of the unofficial director, Sir Joseph Banks, and the head gardener, William Aiton.*

*The 119 cards in this book show a range of features throughout the gardens. In conjunction with the map, an alternative illustrated guide to Kew is offered. The postcards, ranging from Victorian to present day, are a pictorial document of some of the changes over the last 90 years. A few of the buildings featured are no longer standing, and the gardens, unfortunately, have suffered from disasters from natural causes and the activities of man.*

Postcards from Kew was donated by Dot Frey some time ago. Though she doesn't get to meetings, Dot would be happy to have you visit at her cottage, 117 Farm Crest Drive, Fairmount Homes, east of Farmersville. Phone her at 355-5062.

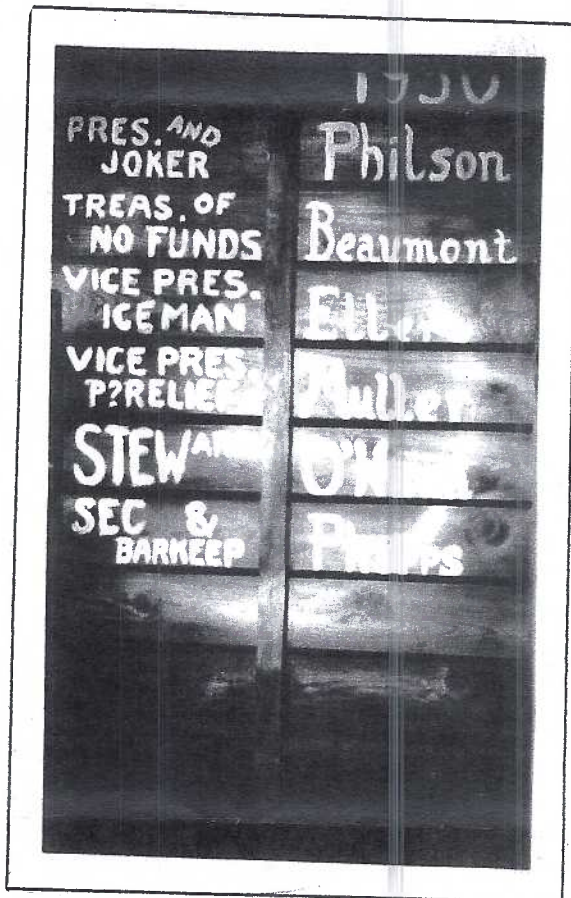
## The Mysterious Eveready Club

Research on a pair of real photo PCs by your editor hasn't proven fruitful. Their stamp boxes – AZO with squares in the four corners – suggest postcard backing used in the late 1920s to early 1940s. This fits perfectly with the date on one card (1930) and the penned notes on the backs of both PCs – 1931.

But where was the rustic cabin? A hunch would be it's a social club. What did they do besides imbibe – or is that reading too much into the cryptic notes?

Who was John S. Muller (?) who penned at least one of the two cards? Lancaster city directories of the 1930s contain a few Mullers, but no John M.

We leave these unanswered questions to our readers. Let us know what you can dig up; what your theory about the Eveready Club is.



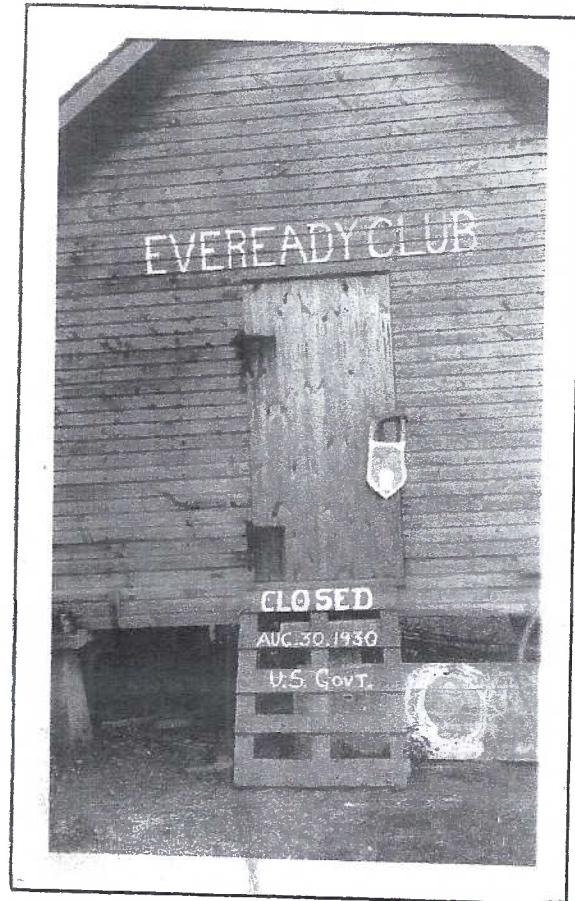
Penned notes on rev. of RP postcard above.

<b>Pres. and Joker</b>	<b>1930</b>	<b>Philson</b>
<b>Treas. of No Funds</b>		<b>Beaumont</b>
<b>Vice Pres. - Iceman</b>		<b>Eller</b>
<b>Vice Pres. - P? Relief</b>		<b>Muller</b>
<b>Steward</b>		<b>O'Hara</b>
<b>Sec. &amp; Barkeep</b>		<b>Phipps</b>

Message:

Hope we all meet again in 1931 for the re-election of officers. Edith joins me in wishing you and yours the best - the "Hostess" (Mrs. Lion) also wants to be remembered.

John S. Muller



Penned notes on rev. of RP postcard above

**EVEREADY CLUB**  
**(Cardboard padlock on door)**  
**Closed**  
**AUG. 30, 1930**  
**U.S. Govt.**

Message -

The O'Hara ladies asked for the name of the club. At a "secret" meeting to finish the last drops the following were suggested:

Beau: Twilight Club

Muller: Flashlight Club

Eller: Eveready Club

The backup chimes(?) in, while making a strong solution: Yes, that's the best one, everything was always ready.

All voted: Aie(?)

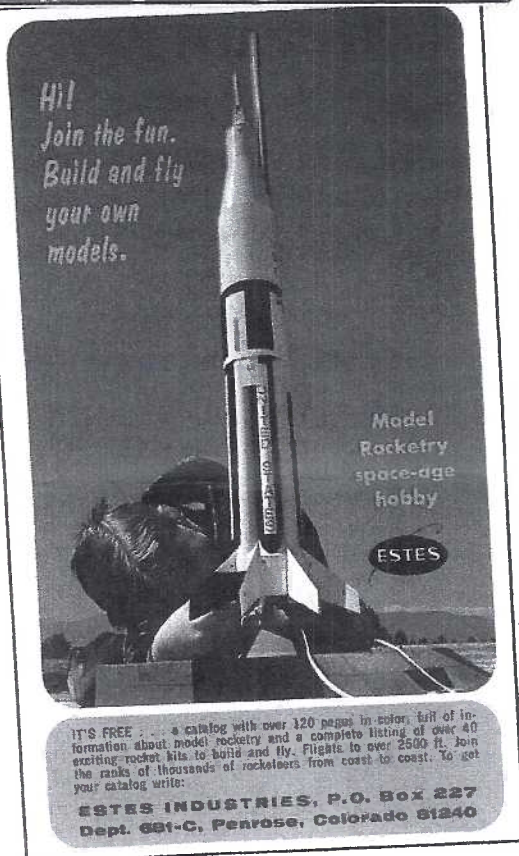
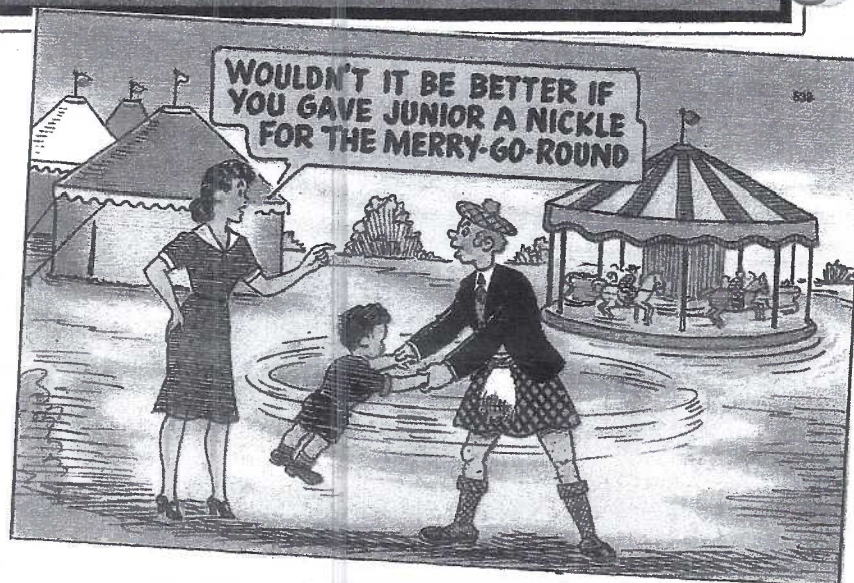
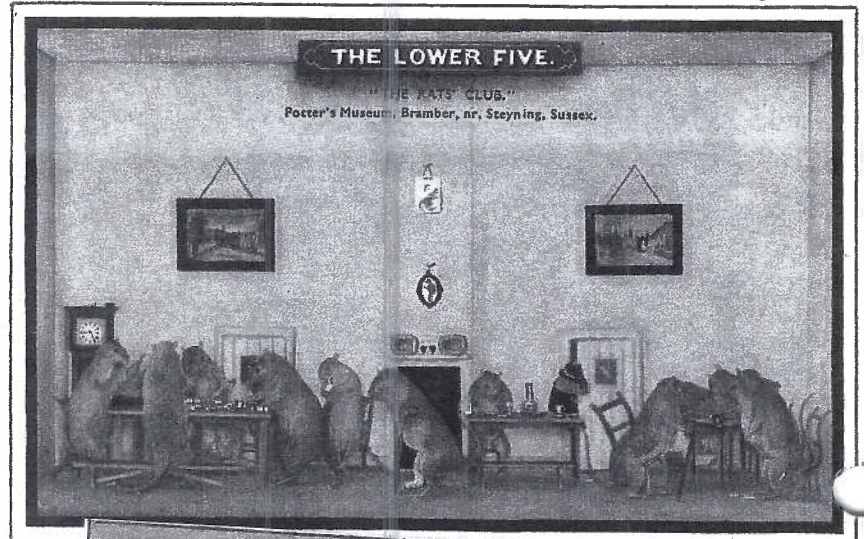
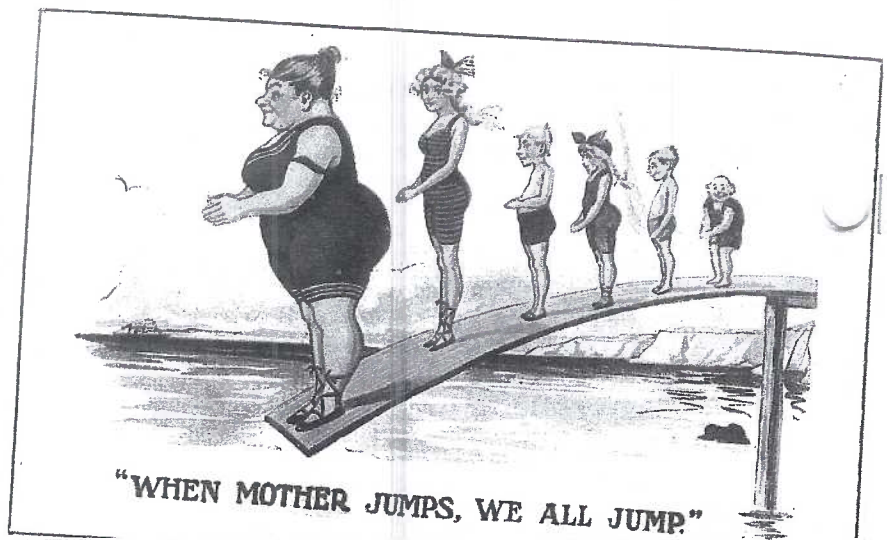
Last drops finished, meeting adjourned until 1931, and all smiled when the club was padlocked.

### New Member

#744 Mark D., Clemens 462 Freeman Rd., Greensburg, PA 15601. E-mail: MDCGBG@cs.com. Mark will be manning table #23 at our August Expo.

Have you begun your exhibit boards for the Expo? Pick your cards and lay them on the board for several days; arrange and rearrange them for the best layout; choose a catchy title for your board.





## Cover Cards and More

Our cover cards include - Miniature Candy Bars, trademarks of Hershey Foods Corp. The card is by Scene-Ics, Mechanicsburg, PA, and the company's licensee. A summer view of insects is a Belgian PC, postally unused. The next card, an unusual one, is by The Puzzle Card Co. of Pittsburgh, PA. Raphael Tuck published the u/b #5276, "The Wheat Empire of the

West." Wheels as wide as 16' kept the giant tractors from sinking into soft reclaimed mid-west fields. The Tichnor "Direct Consumer" linen was p/u in 1950.

Pg. 4 - A Mirror Girl is from Dwig's series #30, p/u in 1911. "When Mother Jumps" is W971 by an unknown British publisher. "The Rats' Club" hangs in the Potter's Museum, Sussex, England, publ. was Salmon. Penrose, CO, Model Rocket Capital of the World, produced a series of which this is Card #1. A tight Scotsman is featured on another Tichnor linen.

Pg. 5 - H. Huber is noted for a large number of humorous folks he drew of rural Germany. The Turnfests were annual events held in many European countries to encourage good health in adults and youth. This d/b card is from the 1908 Turnfest in

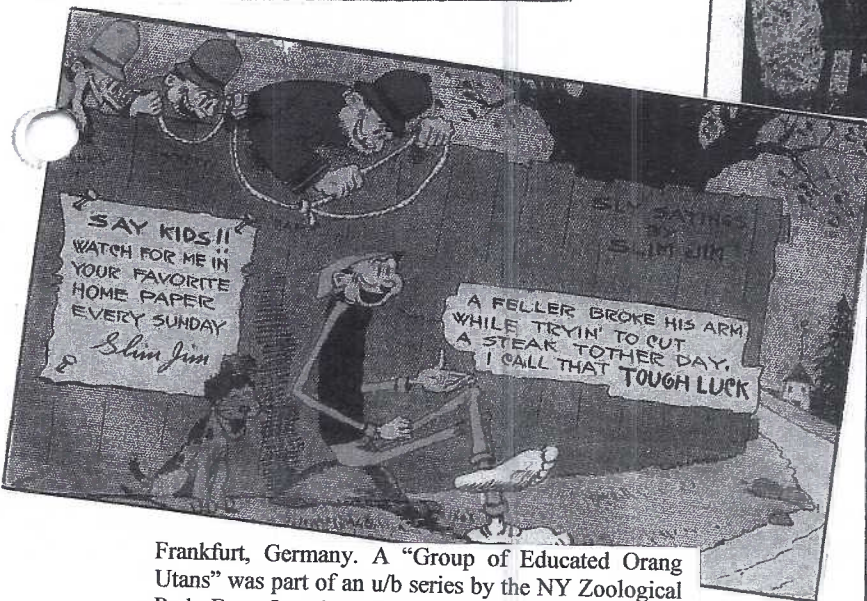




"Yes, Pauline, you alone of all your sex do I love truly".



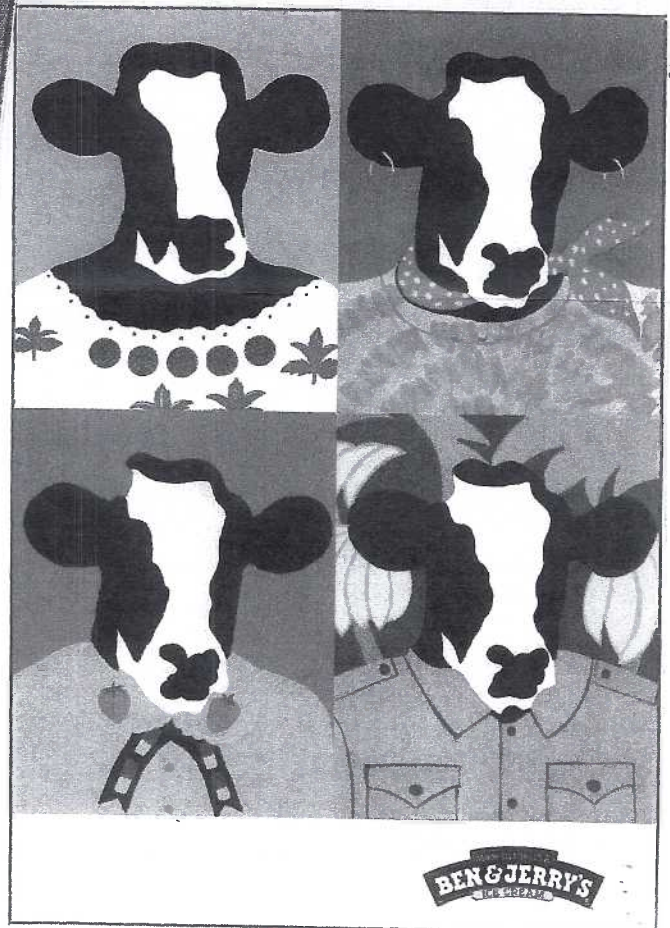
No. 416a. GROUP OF EDUCATED ORANG UTANS  
New York Zoological Park



Frankfurt, Germany. A "Group of Educated Orang Utans" was part of an u/b series by the NY Zoological Park. From Junction City, KS, Victor sent this humorous card in 1921. Ad Card published a Ben & Jerry's Ice Cream card with four flavors on the reverse labeled in Chinese.

What do these 15 PC subjects have in common? They're all July celebrations (but not in the sequence as shown).

- 7/1 - International Joke Day
- 7/3 - Compliment Your Mirror Day
- 7/7 - Chocolate Day
- 7/10 - Don't Step on a Bee Day
- 7/11 - Swimming Pool Day
- 7/13 - International Puzzle Day
- 7/14 - Sodbuster Day
- 7/15 - Hugging Day
- 7/18 - Cow Day
- 7/18 - Ice Cream Day
- 7/21 - Monkey Day
- 7/22 - National Rat Watcher's Day
- 7/23 - Health and Happiness Day
- 7/25 - Merry-Go-Round Day
- 7/29 - Rocket Day

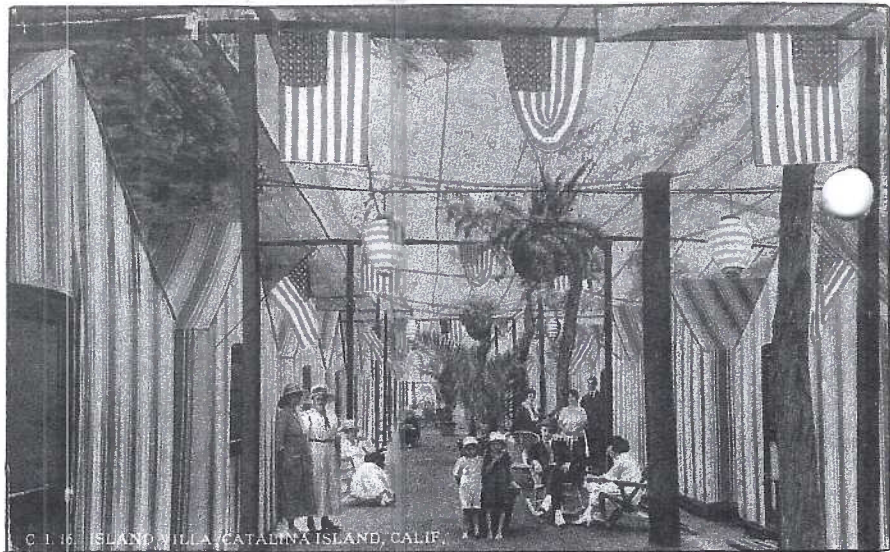




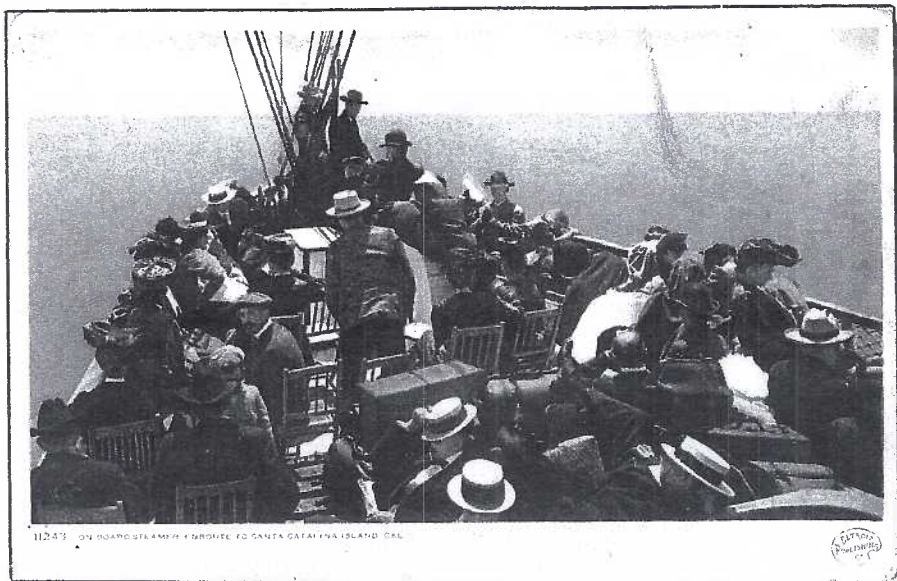
## July Program

Our club has learned that Doug Milliken has a superb collection of postcards by the Detroit Publishing Co. He is certainly our local expert on Detroit views. Most members, however, are unaware that his second love (in cards) is Catalina Island and its town of Avalon.

Doug's life-long acquaintance with the isle just off the coast of southern California (specifically San Pedro) has made him a dyed-in-the-wool collector of Catalina Island postcards. From that collection, Doug will show a mere 48 PCs gleaned carefully from more than 625 cards of the island! Using the opaque projector, we can expect a colorful and informative tour on July 18. We'll see glass-bottom boats, deep sea divers, famous homes, a giant amphitheater and aviary, a tent city and much more. Try to be there. Remember, the F&H Center has air conditioning.



Curt Teich photochrome, #A-91796/CI 16, is a view of the "Island Villa, Catalina Island, Calif."



An early view, Detroit #11243, shows tourists "On board steamer enroute to Santa Catalina Island, Cal."



Curt Teich large letter #5a-H876 showing multi-views of Catalina Island in 1935.

### 2005 Program Schedule

- Jul. - Doug Milliken
- Aug. - Anne and Howard Steinberg on Quarryville
- Sep. - Mike Middleton (subject later)
- Oct. - Annual Auction
- Nov. - Al Schaub (subject later)
- Dec. - Christmas Party



M. Rieder, Los Angeles, published this view of a proud fisherman, "384 lbs. caught with rod and reel, Santa Catalina Island, Calif."

### Future Postcard Shows

**July 9 York, PA.** York Post Card Club's 15<sup>th</sup> Annual Show at Aldersgate Church, Tyler Run Rd. off South Queen St., 9 to 5. \$1.50 adm., 25¢ with adv. card (included with the June CARD).

**Aug. 5-6 Havre deGrace, MD** Summer Chesapeake PC Show. Community Ctr. \$3 adm. for both days.

**Aug. 20 Lancaster PA** LCPC's Annual Expo, Farm & Home Ctr., 9 to 5. Volunteer to help - contact Jere Greider at [jereg@earthlink.net](mailto:jereg@earthlink.net) or 717-285-5872 and get busy with your exhibit boards!

The newly published card enclosed with this issue was the inspiration of Tom Beck. The photo is by Betty Beck. It was published by the Thaddeus Stevens College of Technology and the East End Improvement District and printed by the Stevens College Printing Technology Dept. It arrived a bit late for NPW 2005, but enjoy it anyhow!