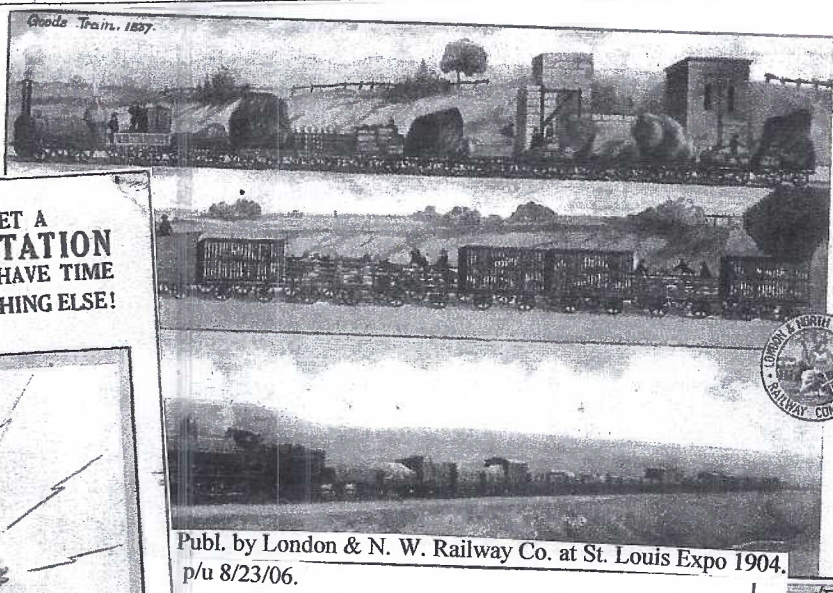


THE CARD - Vol. 16, No. 8. Issue 188. August 2005.
Monthly Publication of the Lancaster County Postcard Club, Lancaster, PA.
Enjoying postcards through education and entertainment.
 Next Meeting: Mon., Aug. 15, 2005. Farm & Home Center. Buy, sell, trade from 5:30. Meeting at 7 pm.
 Yearly membership is \$10 (\$5 for each additional member at the same address.)
 Make checks payable to LCPC and send to Betty Beck, 11 Cinder Hill Rd., Lititz, PA 17543.
 Club and Editor's address: LCPC c/o Jim Ward, 1795 Kleinfeltersville Rd., Stevens, PA. 17578-9669 or midcreek@ptd.net
 Club website: www.playle.com/clubs/lanaster or Google search: lancaster county postcard club

↑ US Mint Coin Collection by Ex-Mark Co., NY. Printed in England. p/u 7/20/01.
 ↓ Bamforth comic. p/u 9/4/24.



Dexter Press linen, c. 1940s. ↑
 MacArthur/ Leyte Philippines Inauguration. FDC 10/20/50. ↓

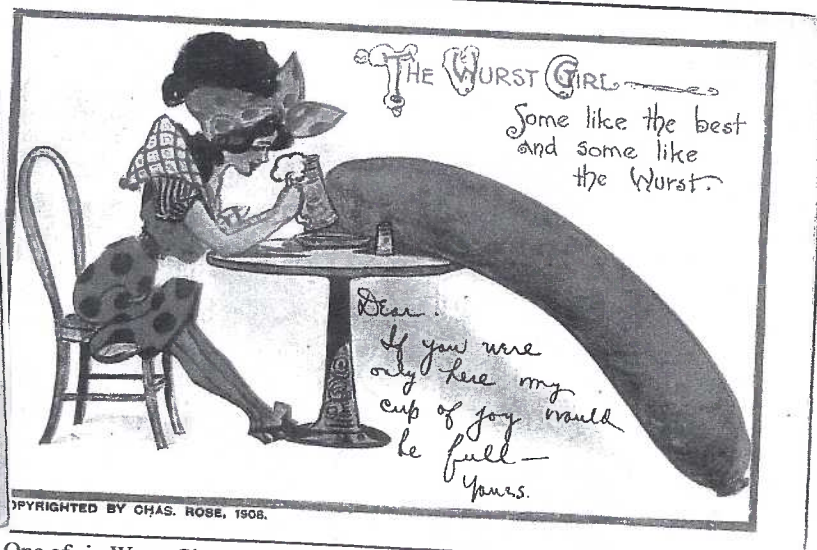


Publ. by London & N. W. Railway Co. at St. Louis Expo 1904.
 p/u 8/23/06.

It's Another Month.
Can you judge from our cover cards and those on page 3 what's being celebrated in the month of August?



Colourpicture linen distributed by HambroNovelty, NY, c. 1930s.



One of six Wurst Girls, Series #20, publ. by Sam Gabriel. Art by Claire Dwiggins.

July Meeting

Sixty members and two guests were present on a sultry night in July. We were so pleased to see Betty and Bill MacDonald join us on a trip from Maine. Betty hails from southern Lancaster County and was glad to see an old acquaintance, Dot Aument.

Set up and selling were Bill Buckwalter, Al Schaub, Dick Bishop, Howard Steinberg, Mike Middleton, Dede Schaeffer and. Jim Ward.

It was good to see Joe Myers on deck. We were so sorry to hear that Marie had passed on last month (*The Card* was at the printer.) Though she was not an active PC collector, Marie always attended the club's picnics and dinners and we'll miss her.

The club also extends its sympathy to Betty Gregg on the loss of her husband and to Carol Dennis who lost a brother in July.

Pres. Sharon Gromis has donned another cap for the summer season. She works in the store of the Clipper Baseball Stadium in downtown Lancaster. For the door prizes she contributed three PCs just published by the ballpark. Winners were Don Tribit, Theresa Jumper and Dick Pendergrast. Betty Jane Weaver was the lucky winner of the 50/50 drawing.

Don Jumper gave a brief review of *A Pennsylvania Album* for the club's library. The heavily illustrated book was authored by Geo. Miller.

This 'n That

Lancaster Township will be celebrating Community Days on September 25. LCPC has been invited to show postcards and a club member is sought who can spend some time with an exhibit. They have allowed us to show and sell our Volume Two of *Windows to Our Past*. The celebration is at the Township's building on the old Maple Grove Swimming Pool grounds, Columbia Pike, west of the city. Please contact Sharon if you and/or a friend can offer some time on Sunday, September 25.

New Local View

The Clipper Magazine Stadium occupies the west side of N. Prince Street between New and James Streets. Opening day was May 11, 2005 (see cancellation date, upper right). Copy on the reverse reads, "Home to the Lancaster Barnstormers of the Atlantic League, the Stadium is host to a wide variety of events and the focus of community development, recreation and excitement."

A screened logo (reduced below) occupies the message area. Along the lower reverse edge are these credits: CAD Image courtesy Tetra Tech; Concept: J. Farrell; Design: K. Miller; Printed in Lancaster, PA. www.lancasterbarnstormers.com

The full color PCs are printed on a matte finish (neat) but are priced at \$1 each (ouch) and available only at the stadium.



In the same vein, Bill Seigford, LCPC #48, was asked, and has volunteered, to present a postcard program for the Elizabethtown Rotary. The service club has also allowed us to show and sell Vol. II at the meeting which will be in November.

If you have a local club or library looking for a brief program, volunteer your services and take along a half dozen books. When folk see them, they buy them – they sell themselves, but the public must know about them.

Included with this issue of *The Card* will be one of two free postcards. Arts in the Park 2005 Elizabethtown is a mite late (the event was June 18) but the 4" x6" card is attractive. Bill Seigford was able to obtain about 200. The second card is offered by Gary Hawbaker. It's the William Penn Statue by Janet DeCoux. It stands in Memorial Hall of the William Penn Memorial Museum at Harrisburg. The PC is standard (old size). Thanks to both members for procuring the cards. By the way, the *absolute maximum size* for a card to be included with *The Card* is 4"x 6". We recently had to reject 150 4 1/4" x 6" cards.

Mike Middleton reports he has discontinued his stand at Renninger's. He will be at Heritage Antiques seven days a week. Jim Morrison and Shirley Cox still have stands at Renningers' Market.

Monthly Postcard Competition

The single card theme in July was appropriately *Patriotism*.

Sharon Gromis FIRST

Pa. State Girl

Jim Ward SECOND RP boy wearing CW buttons

Dick Pendergrast THIRD Shooting the Fourth

Honorable Mentions

Ruth Moyer

Birth of the American Flag

Walter Mowrer

T. Jefferson and U. Sam/4th of July

Don Jumper

Statue of Liberty

Harold Moyer

Little Uncle Sam (Swift oleo ad.)

Tom Beck

Statue of Liberty (chrome)

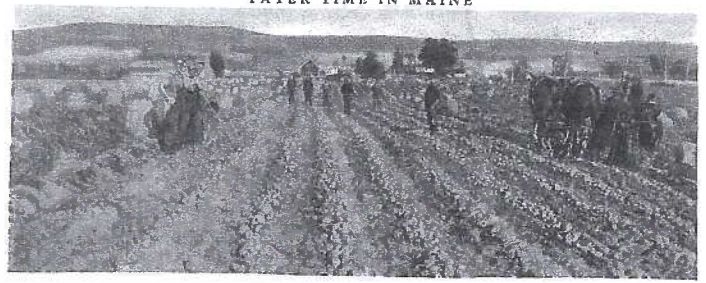
Betty Beck

Lititz Park 4th of July Celebration

Dot Aument RP Lady dressed in a star spangled skirt

The August theme is *Gardens or Gardening* and is a single card.





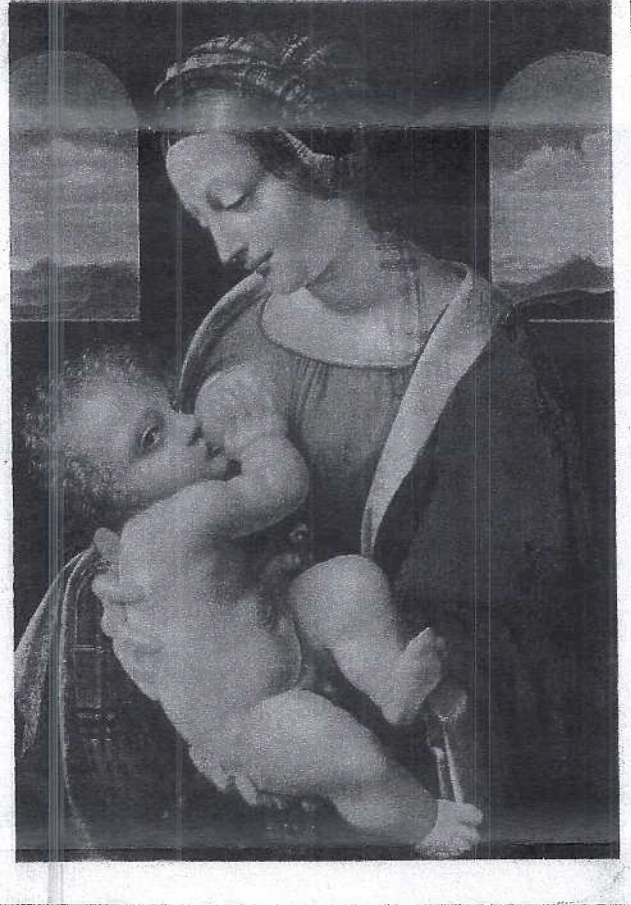
When The 'Taters Are All Dug

When the farmers start in digging
They will stop you on your way.
They will smoke and chew tobacco
While they talk about the pay:
They say, "Fill up your baskets,
Just as much as you can lug."
For they're always in a hurry
Till them 'taters are all dug.

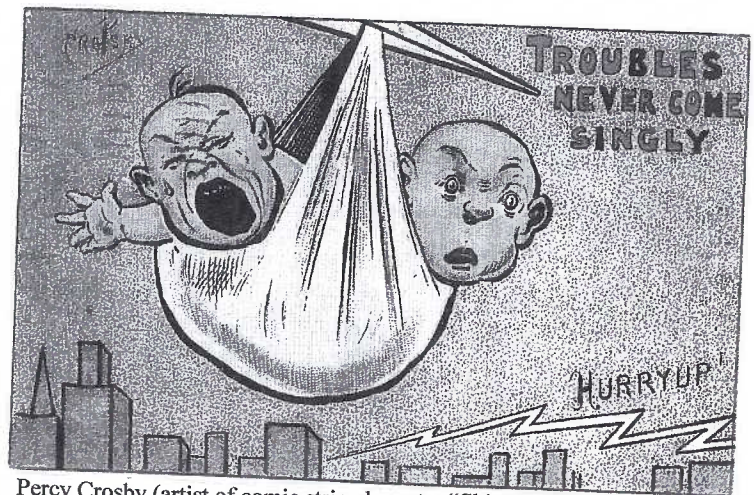
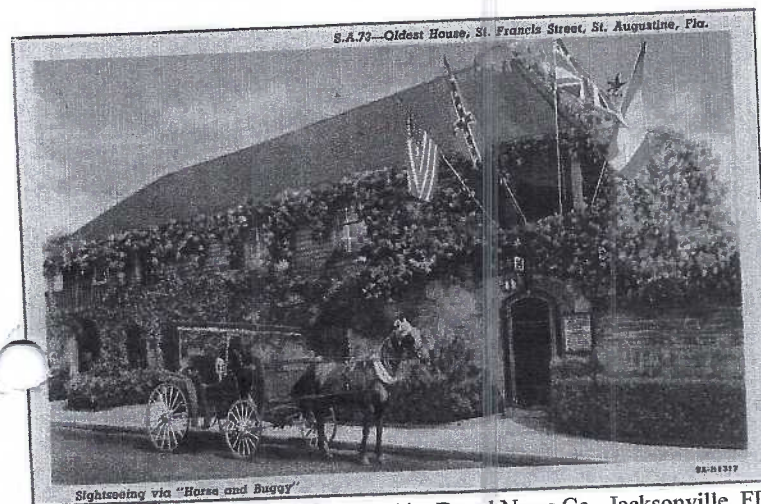
In the Village stores there's 'tater talk
About their monstrous size:
Some of these yarns they sound like truths,
But a lot of them are lies:
There is no whiskey to be had,
Spring water in a jug,
But there'll be an awful racket
When them 'taters are all dug.

4441 25

1929 view published by Curt Teich. p/u 107/31/31.



(top) RP scene from Good Earth, autographed by lead actor.
(above) 1905 P.C. Koeber comic
(right) "Madonna Litta" by Leonardo. Printed in Italy.
(far right) Studio photo made in late 1920s or 1930s.



Percy Crosby (artist of comic strip character "Skippy"). Postally used 7/27/22.
Conclusion (and Answers) on page 5.

Curt Teich printed 1939 linen, published by Duval News Co., Jacksonville, FL.

PA Capitol Preservation Set

On a recent visit with Donald Brown and David Grubbs, Don presented me with a set of four PCs recently issued with his assistance, from the PA Capitol Preservation Committee. The 4" x 6" cards feature Governor's Reception Room, Supreme & Superior Court, and Senate and House Chambers. The four cards are issued in a colorful envelope and the blue and white descriptive card shown on this page. More information is found at <http://cpc.state.pa.us>.

Sets are \$4.95 plus PA sales tax plus \$3.50 postage. You can also contact -
Richard Saiers, Communications Specialist
PA Capitol Preservation Committee
Room 630 Main Capitol Building
Harrisburg, PA 17120
717-783-6484 Fax: 717-772-0742
rsaiers@cpc.state.pa.us

Don seemed to recall the PCs were done by a Lititz printer.

The Pennsylvania State Capitol is considered one of the most successful endeavors of the "American Renaissance" where a unity of art, history, and architecture was achieved in a single project.

Architect Huston consciously designed his Capitol dome as a direct reference to Michelangelo's dome of St. Peter's Basilica in Rome. In the rotunda, he borrowed many aspects of Garnier's Paris Opera House including the grand marble staircase and the caryatid doorway flanked by two light standards and the triple arcaded gallery.

For the fine arts, Huston laid out the vast program for the subjects and themes of all the art to glorify Pennsylvania's achievements in labor, industry, and history. Huston was determined to make the Capitol in Harrisburg "the greatest work ever produced in America." To ensure his vision, he sought out some of the finest artists and craftsmen in the world. Among them was Edwin Austin Abbey, George Grey Barnard, Violet Oakley, William Brantley Van Ingen, and Henry Chapman Mercer.

The Capitol Preservation Committee was established by the General Assembly in 1982 for the purpose of restoring and preserving the State Capitol and its historic contents for all future generations. The Committee is proud to serve as custodian of this grand monument called the Pennsylvania State Capitol.

Series 1

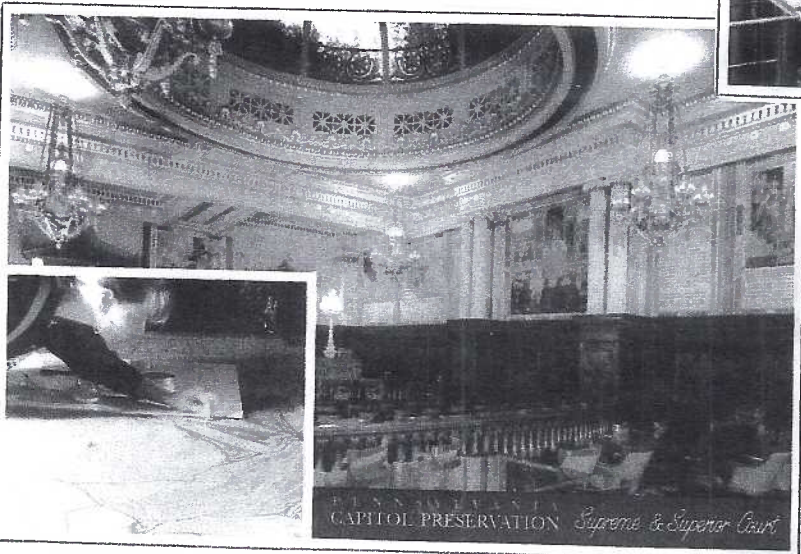
© 2005 CPC



PENNSYLVANIA CAPITOL PRESERVATION *House Chamber*



PENNSYLVANIA CAPITOL PRESERVATION *Senate Chamber*



PENNSYLVANIA CAPITOL PRESERVATION *Supreme & Superior Court*



PENNSYLVANIA CAPITOL PRESERVATION *Governor's Reception Room*

2005 EXPO EXHIBIT ENTRY FORM

Mail or give this entry form to Ruth Moyer, Expo Exhibit Chair, on or before August 14, 2005. She can be contacted at 135 Whitehall Rd., Reinholds, PA 17569; E-mail to rsm@dejazzd.com or phone 717-336-6644. You are encouraged to enter all four categories. If you intend to use two boards (maximum) for any one category, please note this below. Include your title under the appropriate category.

Judges, selected from among the dealers on Saturday morning before the show, will consider the following criteria:

Postcard Information	1/3
Presentation and Originality	1/3
Condition, Completeness and Rarity	1/3

Exhibit boards should be at the Farm & Home Center Friday night, August 19 between 6 and 7 PM; last possible entry time is Saturday, August 20, 8 AM. NO EXCEPTIONS. You may also give your boards to Ruth beforehand if necessary. Do not cover your boards. LCPC will provide each board with a new plastic bag,

First, Second and Third Place Awards receive \$15, \$10 and \$5 cash in each category. *Best of Show*, chosen from the First Place exhibits, receives \$25. *Peoples Choice*, chosen by the public's ballots, receives \$25. Each entry receives a specially designed 2005 Expo Postcard Award.

I will have an entry in the categories listed below with these titles –

MY FAVORITE SUBJECT _____

CHILDREN _____

HUMOR _____

TRANSPORTATION _____

Member's Name _____

Phone Number _____

E-mail _____

The Event of the Year!

EXPO 2005

Saturday Aug. 20, 9 to 5

Conclusion to August Celebrations on Postcards

The introduction of Monthly Celebrations in July met with overwhelming enthusiasm from readers of *The Card* and so we continue the growing-by-leaps-and-bounds feature in August. Here we list those celebrations (some bizarre and some goofy) that we found on Internet sites and for which we had PC examples. There were dozens more that couldn't be shown for lack of space. Enjoy what we were able to cram on just two pages. They are listed in chronological order, so you still have the fun of matching which to what and who to whom.

Aug. 1 – 7 Breast-feeding week.

2 – First Lincoln cent issued in 1909.

4 – Twins Day.

7 – Lighthouse Day.

10 – First Steam Locomotive, circa 1822.

12 – Middle Child's Day.

14 – Japan Surrenders to end World War II.

16 – Roller Coaster Day.

16 – Bratwurst Day.

19 – Potato Day.

20 – Radio Day.

28 – St. Augustine FL established in 1565.

28 – Kiss and Make Up Day.

29 – Chop Suey invented in 1896.

Is your editor growing weary of meeting monthly dead-lines after 15 years and 8 months? Yep.

Build Your Own Expo Exhibit Boards

Tips for everyone.

Poster boards are 22" x 28" and available at many crafts stores. White is preferred but not mandatory.

Hold your board vertically ("portrait" in computer terminology).

Do NOT cover your board. LCPC will provide a new, clean vinyl bag to cover each board.

Keep the title at top but allow at least ½" from edge so our easel clips will not hide your title.

Any number of cards is acceptable; an optimum number is 10 to 15 per board.

If you feel more information is needed, include it in unobtrusive paragraphs or captions under the cards.

Each member may enter a board in each category. Why enter two different boards in one category and compete with yourself?

Boards must include images that are original for this Expo.

Each category receives 1st, 2nd and 3rd place awards. All other entries receive an Honorable Mention award.

From the First Place awards, the judges choose a Best of Show board.

The public, using paper ballots, chooses a Peoples Choice Award.

All awards are displayed during the last hour of the Expo.

Boards must be in the hands of the Expo Exhibit Committee the evening before the Expo (6 -7 PM) or no later than 8 AM the morning of the Expo; no exceptions, since judging takes place *before* the Expo begins.

August Meeting

We're aware of Howard Steinberg's excellent collection of local views. His hometown of Quarryville is no exception. Howard's slide program in August will predictably be a Reely, Reely Beeg Shew - a parade of rarities - to be sure.

There's little doubt, in your editor's mind, that Howard has all of the cards we show here, but, with his limited time, and so many PCs from which to choose, there's a chance he might just not show all of these.

Center column, top to bottom -

Two views of E. State Street were made nearly 50 years apart.

The Ponderosa Restaurant and Motel (before the museum) was along #272 north of town.

The first block of W. State St. looks east with the Quarryville National Bank (with arched doorway) on the right.

An architect's rendition of The Quarryville Presbyterian Home for the Aged has June writing on 7/8/49, "This is the old people's home under construction...an elderly man fell down the elevator shaft from the top floor to basement ...with few bruises."

Right column, top to bottom -

An adv. card with pre-drilled hole features a 1908 art card meant to hang in repair shops.

Alice and Bill Johnston had a photo card made for Christmas, 1942. It shows their home's front door on W. State Street

An early (u/b) PC features James Jefferis, Democrat candidate for Jury Commissioner.

Future Shows

Aug. 5-6 Havre de Grace, MD Martin Summer Show, Community Center, 10 -5.

Aug. 20 - LCPC's 2005 EXPO at the Farm & Home Ctr., Rte. #72 near #30. 9 to 5. You can help at 8 AM and at 5 PM.

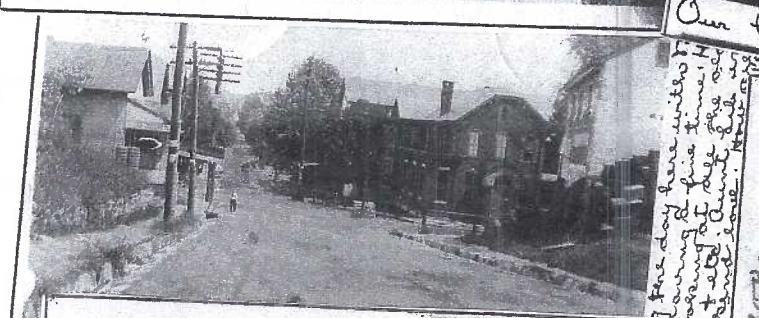
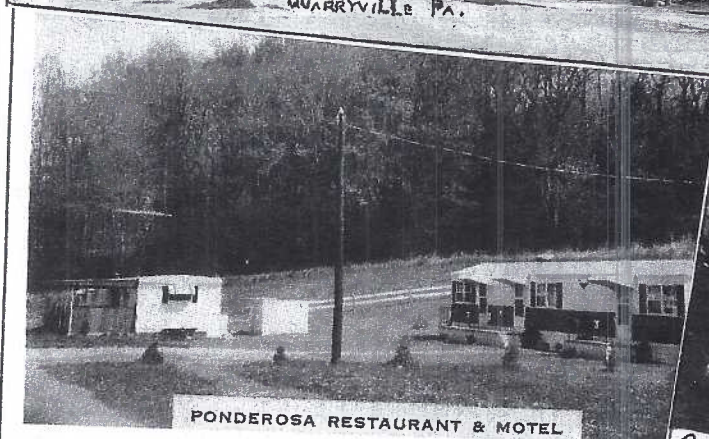
Aug. 21 Bridgewater, NJ. Central Jersey Deltiological Society. Somerville Lodge. 10-4:30.
Sept. 10-11 Wayne, NJ by NJ Stamp Dealers Assoc. PAL Dr. off #23 North. 10 - 5, 10 -4.



D. T. HESS

LARGE STOCK OF VEHICLES ON HAND
REPAIRING AND PAINTING AT SHORT NOTICE
GENERAL REPAIR WORK WHILE YOU WAIT

QUARRYVILLE, PA.



For Jury Commissioner-1906



Subject to the Decision of the Democratic County Convention.