

# THE CARD - Vol. 16, No. 9. Issue 189. September 2005.

Monthly Publication of the Lancaster County Postcard Club, Lancaster, PA.

*Enjoying postcards through education and entertainment.*

Next Meeting: Mon., Sept. 19, 2005. Farm & Home Center. Buy, sell, trade from 5:30. Meeting at 7 pm.

Yearly membership is \$10 (\$5 for each additional member at the same address.)

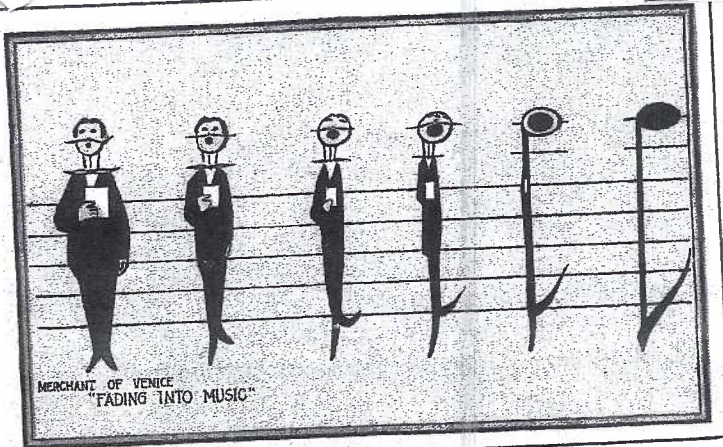
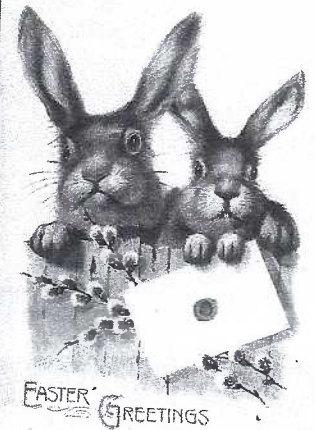
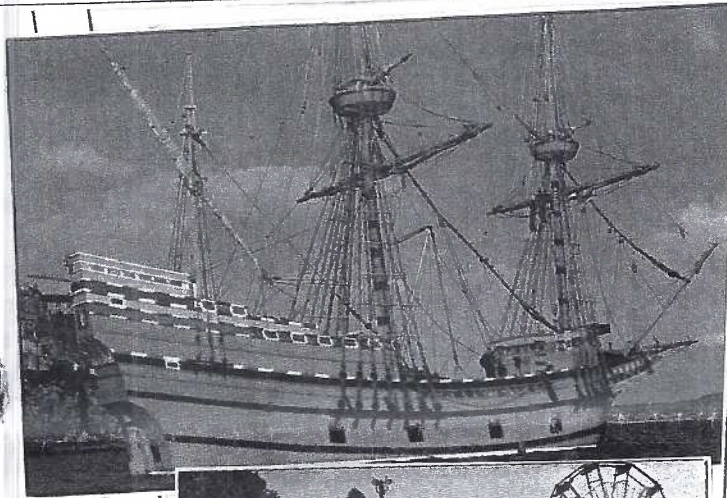
Make checks payable to LCPC and send to Betty Beck, 11 Cinder Hill Rd., Lititz, PA 17543.

Club and Editor's address: LCPC c/o Jim Ward, 1795 Kleinfeltersville Rd., Stevens, PA. 17578-9669 or [midcreek@ptd.net](mailto:midcreek@ptd.net).

Club website: [www.playle.com/clubs/lanaster](http://www.playle.com/clubs/lanaster) or Google search: lancaster county postcard club

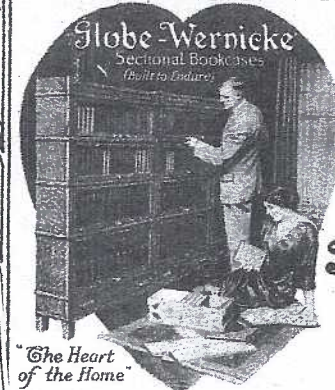


**APACHE MAY SLAUGHTER.**—This little Indian girl was found on a battle field and adopted by our famous early day Sheriff, John Slaughter, and named Slaughter because Mr. and Mrs. John Slaughter adopted her. The battle field was just a short way from BROADWAY OF AMERICA, about 75 miles southeast of Tombstone, Arizona. The book TOMBSTONE gives an interesting account of this little Indian Maid.



**It's Another Month.**

*Can you judge  
from our cover cards  
and those on page 3  
what's being celebrated  
in the month of September?*



**POST  
CARD**

PUT  
ONE  
CENT  
STAMP  
HERE

**The Globe-Wernicke Co.  
Cincinnati  
Ohio.**



## Cover Cards and Those on Page Three

### Cover Cards

**Top row** An unidentified publisher issued the b/w card that includes a short bio of the Indian child. The card was not mailed and so lacks a postmark. The Plastichrome company shows "a gift of the people of Great Britain to the people of the USA as a gesture of Anglo-American friendship. The M II is permanently berthed at Plymouth." Easter in September? Not quite, but these images are essential to our monthly essay.

**Middle row** "Evolution" cards were the rage during the u/b postcard era. Amigo Fun Park is a popular area at South of the Border on Interstate #95. Koppel is the publisher. Perhaps the scarcest card in this month's group is a colorful patriotic, one of a pair.

**Bottom row** On an early NYC card "General View of the Giant Buildings," Auntie says "It's dreadfully hot but we can get plenty of ice and fruit..." The final PC as well as the first one on our cover are both reproduce in full size. The G-W card on the message side, offers samples of bookplates. Globe-Wernicke Co. also wished to know how many volumes the writer had in his library. G-W sold sectional bookcases.

### Page Three

**Top row** A-B-C Schutzen - This caption is beyond me. Schutzen translates to "protect" or "aim." Am I dense? I don't understand the caption on this German published continental PC, but I *do* appreciate the cute bears! The inebriated celebrant flies over Munich having created his own Sputnik. Cute pups on a 1910 PC from Mt. Vernon, Ohio, advertise Young's Hats.

**Middle row** A Rotary Real Photograph was printed in England, an obvious studio photo. Is the model a little boy or girl? The next card is shown in full size so you can read its message. Mailed from Rochester, NY in 1917, it typifies our country's fascination back then for "newly discovered" fiber-based cereals.

**Bottom row** Fossil coral specimens were collected from gravel pits on the shores of Michigan's Lower Peninsula. Just like many semi-precious minerals, the "Petoskey Stones" would be fashioned into jewelry. Ah, good old Nancy! In his book featuring the tubby mischievous girl, Bill Griffith captured her essence - "Never has a comic strip been more simply or subtly created, or more underrated, than Nancy...The strip's natural value is cumulative, like a good meal. And just think of all the desserts!" We conclude with a great postcard by the Illustrated Post Card Co., one in a series of World War I patriotic cards.

*September Celebrations are found on Page 5.*

Editor's Note: The club's librarian is Carol Giona. She has offered to write a column about books in the LCPC library for *The Card*. If you would like to borrow the book reviewed here, call Carol at 1-717-464-1410. She will contact a member of the Library Team and have the book available at the next meeting.

### Library Highlight

#### FANTASY POSTCARDS with Price Guide

By J. L. Mashburn

Fantasy, according to Webster, means **imagination or fancy; wild visionary fancy; an odd notion or whim; an unnatural or bizarre mental image in one's mind; a highly imaginative poem or play.** Fantasy touches everyone...from children with visions of fairyland and fairy tales to the old man dreaming of days gone by.

A great proportion of fantasy postcards were drawn and issued solely for the enjoyment of children. The learning tools of nursery rhymes, exciting fairy tales, wonderful dressed animals...and even Halloween and Santa...were part of the happy learning experience in the early lives of most children and are included in this book.

The price guide has been uniquely designed to serve both the needs of the beginning and advanced collector, as well as the established postcard dealer. This comprehensive guide to cards dating from the 1900s through the 1940s makes it possible for even the novice collector to consult it with ease in finding each listing.

Please call Carol Giona if you would like to borrow this book.

### Would you like to read more about postcards?

You're invited to join collectors from coast to coast in sharing the mutual entertainment and educational experiences of this well known publication.

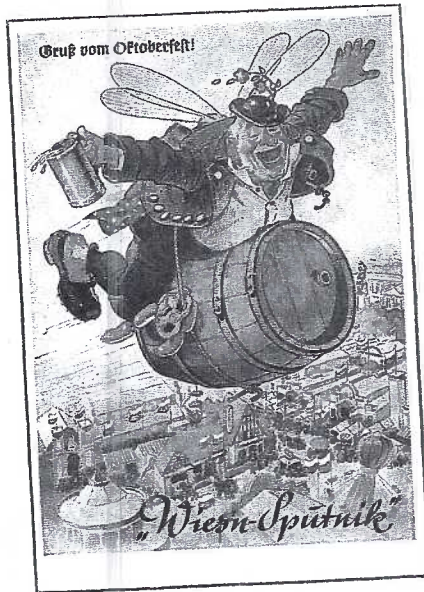
## The Journal of the Postcard History Society

*Published quarterly, includes a 3-hole format for storing in a binder. You'll receive 14 pages (cover in full color) chocked full of facts and fun for just \$9 postpaid\*.*

**\*LCPC members pay only \$7 by picking up their copies at meetings.**

Jim Ward, 717-721-9273, 1795 Kleinfeltersville Rd., Stevens, PA 17578, e-mail: [midcreek@ptd.net](mailto:midcreek@ptd.net)





## This Card is Worth 10 Cents

IF YOU TAKE IT TO YOUR GROCER

Mr. W. A. Wyke  
1202  
before \_\_\_\_\_, and purchase a package of JERSEY ROLLED WHEAT for 13 Cents. He will give you free of charge a 10 Cent package of JERSEY CORN FLAKE.

JERSEY ROLLED WHEAT is a highly nourishing food that aids digestion, relieves stomach disorders and positively relieves constipation.

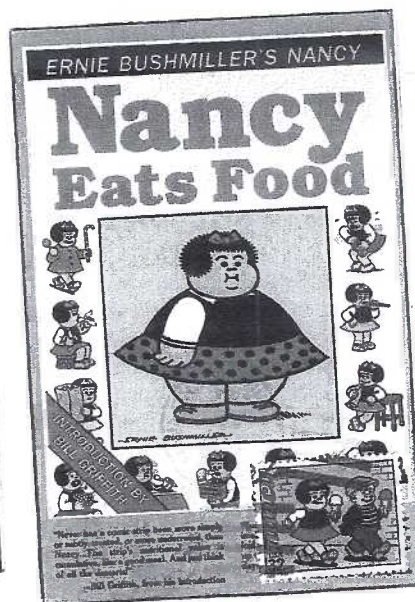
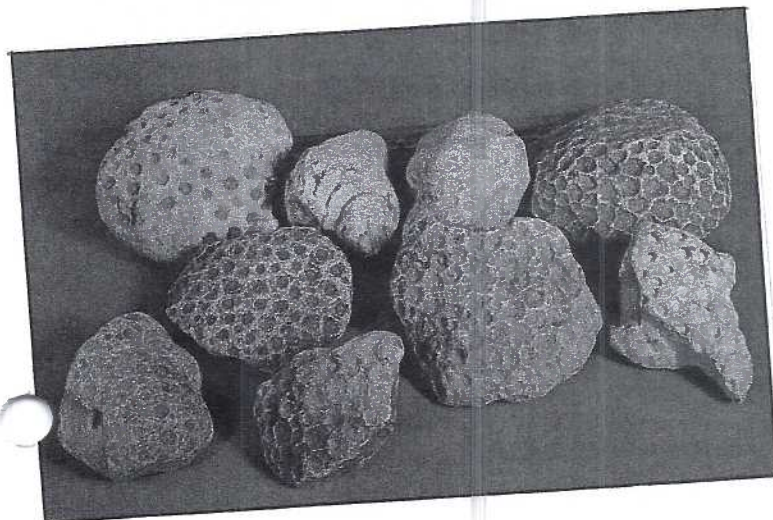
Customer writes name and address here.

Name \_\_\_\_\_  
No. \_\_\_\_\_ Street \_\_\_\_\_  
Town \_\_\_\_\_ State \_\_\_\_\_

**N. B.**—This card positively will not be redeemed after the above date. Redeem it today; you will forget it tomorrow.

JERSEY CEREAL FOOD CO., Cereal, Pa.

Do You Suffer From Any of These Troubles?  
Headache, nausea, dizziness, nervousness, melancholia, irritability, fatigue, loss of energy, sleeplessness, confusion of mind, loss of appetite, drowsiness, worry, the blues, sour stomach, gas in stomach or bowels? If so, make use of this card and try  
**JERSEY ROLLED WHEAT.**





## August Meeting

The weatherman predicted a temporary lull in the oppressive heat wave and members took advantage of it. We had 68 in attendance including three guests. Set up and selling were Sam Nolt, Dede Schaeffer, Al Schaub, Dick Bishop, Ruth and Harold Moyer, Mike Middleton, Howard Steinberg and Jim Ward.

We missed a monthly anecdotal tale by our secretary, Gisela Withers (groan). Jere Greider asked for a few more volunteers for the Expo – particularly in Saturday Tear Down. By the time you read this our 13<sup>th</sup> Expo will be history (see exhibitors elsewhere in *The Card*). There are always some LCPC members who see a need for help and the void is filled in no time. That's the kind of club we are.

A good looking T-shirt sporting a replica of the Clipper Stadium postcard was the sole door prize. Linda Mylin was the lucky winner. (Do you want to bet it ends up on son Eric's back before too long?) The 50/50, a whopping \$27, went to an appreciative Susan Glass.

**NOTICE** - Pres. Sharon Gromis reports a switch in Oct. and Nov. programs. Al Schaub's program will be in Oct. The Annual Auction will be in Nov. If you have PCs to sell – singles, sets, albums or boxes, bring them to the Sept. or Oct. meeting. Lots will be listed in the Nov. *Card*. Auction sheets can be gotten from Jere Greider (717-285-2872) or Sharon (717-892-6864). Should there not be enough lots for a full auction, we'll have a substitute program.

Library Chair, Carol Giona, reported that two books have been misplaced. If you can be of help, contact her at 717-464-1410. They are: *American Postcard Guide to Tuck* by Sally Carver and *How to Price and Sell Picture Postcards* by Roy Cox.

**Harold Galebach**, an admitted double-addict, (postcards and railroads) volunteered a ten minute review of *Rail Mail*, a book in the club's library. It was most informative and well received. Thanks, Harold.

Jim Ward announced he will be stepping aside from editing *The Card*. Any member interested in taking over or sharing the work with another member is asked to connect Sharon (717-892-6864), Dick Pendergrast, our 2006 President (717-464-5199), any member of the Bd. of Directors – Jere Greider, Carol Giona, Gisela Withers, Dede Schaeffer, Ruth and Harold Moyer or Jim. His last issue will be December 2005 or sooner if possible. He will assist in as many ways as possible during the transition.

Our postcard inserts continue with a group of Harrisburg PCs, thanks to **Gary Hawbaker**. You will receive any one of these subjects: Reading of the Declaration of Independence, a painting, by Abbey (main bldg.), William Penn Statue by Janet de Coux (museum), the Senate Chamber, Transportation Gallery (museum), or the Federal Building.

## August Monthly Competition

The single postcard entries were to be on the subject of **Gardens or Gardening**. Twelve members offered a wide variety of cards.

**Jim Ward** FIRST Lyman Seed packet stand  
**Carol Dennis** SECOND Maiden squirts  
Cherub  
**Carolyn Middleton** THIRD Cat and Sunflower

### Honorable Mentions

**Blanche Corrigan** Barrose Terrace  
**Ray Dennis** A Garden on a Rally Day Card  
**Carol Giona** Two Girls in a Garden  
**Don Jumper** Head Gardener  
**Doug Milliken** God and Gardens  
**Walter Mowrer** Hershey Rose Gardens  
**Harold Moyer** It Beets All  
**Sandra Schaub** October Fruit  
**Janice Weitzel** Barefoot Amish Children

Congratulations to all.

### Future Monthly Competition Themes

*S* = single postcard; *B* = board of postcards  
Sept. A favorite Real Photo postcard (S)  
Oct. The color Orange (S)  
Nov. Something for which to be Thankful (S)  
Dec. Angels (S)

Note how many months the requirement is just a single card. This should make it a more inviting search for many members whose collections are not extensive. The more participants, the merrier!!

## About Our Members

The commemorative publication, 150 Years of MU Faces (Millersville University) mentioned – as one of the 100 – LCPC #47, **Harry Lines**, for many years our Treasurer. Among his many contributions to the college and then the university, "he has been active with the Lancaster County Postcard Club and was instrumental in MUAA's printing of a series of PCs featuring Millersville."

**Jim Morrison** directed us to the July 2005 issue of *The Train Collectors Quarterly* edited for more than a generation by his friends Bruce and Anna Manson. Four pages were devoted to the miniature RRs using photographs, postcards and old advertisements of amusement parks. The story is to be continued. Might local miniature RR postcards be forthcoming?

**Ron Walton**, following in his dad's footsteps, has taken the chair in the bicentennial celebration of the village of Conestoga. If this issue doesn't reach you in time for the gala event on Sept. 3, do try to get to see the excellent displays in the museum at Conestoga. The citizens are to be congratuated for an outstanding restoration of their historical society's home.

**Bernie Heisey** brought to our attention a new book (the third) by friend Brian Butko. Those of you who enjoyed Brian's first two informative little books about the Lincoln Highway will be thoroughly delighted with this large hardcover coffee-table tome. With color on every page, \$29.95 is a bargain. A reliable source says the next printing of "Greetings from the Lincoln Highway" might well rise to \$39.95.



## EXPO EXHIBIT AWARDS

Ruth Moyer and her committee did another outstanding job in carrying out one of the highlights of our club year – the annual Expo exhibits. Though the number of entries has remained constant for the last five years (35 to 45), the quality of the exhibits has constantly improved – these comments from one of the judges, several dealers and a few “old timers” who’ve examined hundreds of exhibit boards over the years.

As might be expected, My Favorite Postcard Subject had the greatest number of entries. This type of category – potpourri, misc. – is always appreciated by the spectators, since it offers a plethora of topics.

### MY FAVORITE POSTCARD SUBJECT

Jere Greider **FIRST** Coca Cola  
Jim Ward **SECOND** Tantalizing Twisters (pretzels)\*  
Donald Brown **THIRD** Architectural Statements

#### Honorable Mentions

Cheryl Edwards Christmas Canines  
Bob Kramer Taft vs. Bryan – 1908  
Joe Myers Atlantic City B. C.  
Carolyn Middleton Aristo-Cats  
Leon Rowe Calling All Customers  
Dolores Rowe The Cat’s Meow  
Mike Middleton Tribal Societies\*  
Ruth Moyer Halloween  
Harold Moyer Beware of Santa’s Switch  
Betty Beck And the Moral Is  
Tom Beck Bottoms Up  
Walter Mowrer Children – The Joys of Christmas  
\*Two boards

### TRANSPORTATION

Dolores Rowe **FIRST** Trolleys, Sm. Town Life Lines  
Ruth Moyer **SECOND** Street Cars  
Walter Mowrer **THIRD** Horse Transportation

#### Honorable Mentions

Harold Moyer B & O Railroad  
Donald Brown Travel Union Pacific RR, 1947  
Bob Kramer Bicentennial Trains  
Mike Middleton Surfing USA  
Jim Ward Lancaster Trolleys  
Dick Pendergrast Double Decker  
Charlie Heim Chickies Rock and the Park

### CHILDREN

Walter Mowrer **FIRST** Children Playing  
Jim Ward **SECOND** Kids and their Caps  
Donald Brown **THIRD** Our Kiddies by Dinah

#### Honorable Mentions

Dolores Rowe Children’s Pastimes  
Harold Moyer Little People  
Ruth Moyer Children with Santa

### HUMOR

Dolores Rowe **FIRST** Is Nothing Sacred?  
Walter Mowrer **SECOND** Baby Humor  
Ruth Moyer **THIRD** Ford Comics

#### Honorable Mentions

Harold Moyer Dog-gone  
Donald Brown Doing His Duty – 1917  
Barbara Heim Have You Eyed the Applied  
Bob Kramer Too Busy to Write  
Tom Beck Derrieres  
Jim Ward Easter Egg People

Our **Best of Show** is always chosen from among the First Place winners. This is the top award went to **Walter Mowrer** for his Children Playing, a board of real photo children with “old time” toys. Voting by the public seldom matches the judges’ top choice – and why should it? **People’s Choice** award

order but it shouldn’t be difficult to match them to the cards. September is Classical Music Month and Better Breakfast Month. Serious as well as goofy days follow

Because members are beating down your editor’s door to have him continue the essays of monthly celebrations – here’s still another. As you see, the subjects for many celebrations are “stretched” to say the least. On the other hand, as long as postcards exist in the files, the challenge is accepted.

The celebrations are listed in chronological

### Conclusion to September Celebrations on Postcards

3 Uncle Sam’s Birthday. (Image first used in 1813.)  
3 Skyscraper Day  
4 Newspaper Carrier Day  
6 Labor Day  
6 Read a Book Day  
7 Teddy Bear Day  
15 Felt Hat Day  
16 Collect Rocks Day  
16 Mayflower Day  
20 Oktoberfest in Germany – to Oct. 5  
21 Miniature Golf Day  
22 Native American Day  
24 Rabbit Day  
25 National Comic Book Day

### An Explanation from your editor

At the August meeting I announced that I would step aside from editing *The Card*. Several members were aware of my feelings but none of them knew I had a fixed “retirement” deadline of Dec. 2005. Actually, my work will cease the last week of November with my help on the Mailing Committee for the Dec. *Card*.

Keeping *The Card* on schedule for 16 years has been a pleasure – a pleasure because, not once has a president, a director, a member requested a special subject. For 190 issues you’ve given me your confidence and allowed me my whims. For this I am very grateful. In fact, had there been regular demands, I doubt if I’d lasted a year. It would have been a task, not an enjoyment.

Many times, along with a compliment, I’d be asked, “How do you come up with these subjects?” That’s an easy question to answer. My Dad had eclectic interests. I’m sure I inherited the trait. My initial postcard collection was Lancaster, my hometown, but, like many collectors, when finding new views became difficult, I looked further into the PC world and discovered Holidays, Novelties, Comics and more. (At last count the file drawer dividers show 350 topics.) Multiply those by another 150 sub-topics and you’ve an excellent profile of a postcard nut. So you can understand that reaching nearly anywhere into the file drawers, I had a story in my hands. Choosing the appropriate cards and adding a little copy (Mother said I had ‘the gift of the gab’) it was all downhill.

This is the description of just one collector. It’s not what you should expect from our next editor. It’s not what you’ll necessarily find in another club. The fact is, there are many good PC club newsletters out there – a dozen of which are on our exchange list. These are written by editors who have their own unique presentations – some quite clever.

In LCPC’s first few years I felt there was a gift that I had to acknowledge. Charter members will remember that in 1991 Earl Carver and his directors awarded me an Honorary Life Membership for helping start LCPC. Going that extra mile with *The Card* was my way of repaying the honor. I mention this because no one, let me stress, *no one*, should be expected to duplicate my repayment.

After nearly 16 years the pleasure has become a task. Why? In those early years meeting the monthly deadline was a challenge (even the year I moved from one home to another). Of late, though, I remind myself that there are projects I’ve wanted to do and they’ve been on the back burner for too long. The only way I’ll get to them is to give up *The Card* and its monthly deadlines.

This is my sole reason for giving up the editorship. I will, as I mentioned at the August meeting, write an article for *The Card* from time to time, especially in the transition months, if the new staff wishes me to do so. Once again, I thank the membership for its confidence (and often tolerance) during my tenure. Jim Ward.

### New Members

#745 and #746 Janice and Al Bernard 655 Blossom Hill Lane, Dallastown, PA 17313. Ph 717-246-5146.

#747 James Brodt, 1203 Lincoln Heights Ave., Ephrata, PA 17522-1520. e-mail jbrodt@dejazzd.com. Ph. 717-733-0318.

went to Have You Eyed the Applied?, a board of wire-tailed animals and other applied attachments by **Barbara Heim**. Congratulations to all and a great big “Thank You” to our judges – Doris Kay Feight, Ralph Edson, Dale Biesecker and John Klein. They did an excellent job.

The 2005 Expo’s General Chairman, **Jere Greider**, reported many favorable comments from the dealers. He was pleased with the exceptional volunteer turnout for Friday evening’s Set Up as well as the Tear Down after the show. Attendance was about the same as in 2004, 300 plus or minus.

Ed. note – Perhaps a local newspaper article (with photo) in 2006 might bring in more new visitors – and potential collectors. It has in the past.

### Future Shows

Sept. 18 Windgap, PA  
Lehigh Valley Postcard Club.  
Town fire hall.  
Oct. 1 Allentown, PA  
Paper/Adv. show. Fairgrounds.



## September Program

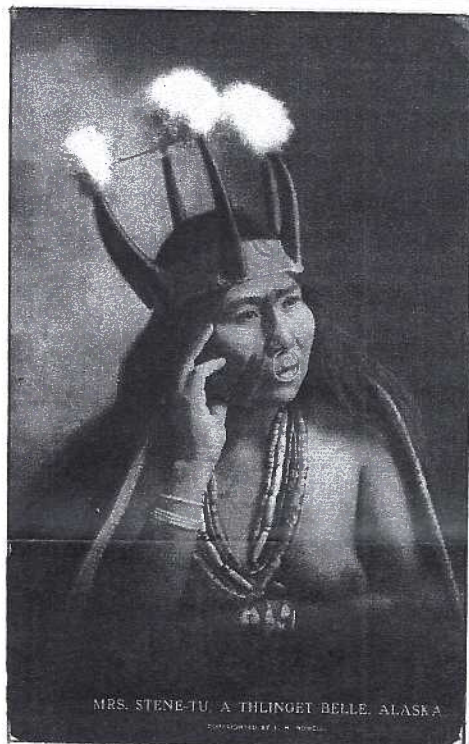
To your editor's memory, in nearly 16 years of LCPC programs, there's never been a subject such as one that Mike Middleton will tackle in September. Mike was not specific about how or why he came to collect tribal societies from around the world. In addition to introducing a subject foreign to most of us, he may just ignite a spark that convinces a few members to look into a new realm of PC collecting.

From a small handful of foreign "types" he was shown, Mike chose, among others, these six that will introduce the flavor of his program.

Left column - The Lubkin Co. of Mesa, AZ printed a d/b of an (American) **Indian Mother with Papoose**; Mrs. Stene-Tu, a **Thlinget Belle**. When this PC was mailed in 1913, The Thlinget or Tlinget people inhabited Alaska. Some still do. But the Internet suggests many can now be found throughout the Yukon Territory of Canada. The PC was published by Lowman & Hanford Co. in Seattle, WA.; a New Zealand photogravure card (no publisher ID) shows **Maori Weavers in Rotorua**, (on North Island) N.Z.



Indian Mother with Papoose.



MRS. STENE-TU, A THLINGET BELLE, ALASKA  
Copyrighted by J. W. Hanford



Maori Weavers, Rotorua, N.Z. 5100



Javanese children

Djocja

copyright

Javanese children  
Djocja



BAGOBOS, ZAMBOANGA, P.I.

Right column - **Javanese Children in Djocja** by an unidentified Dutch Indies publisher; five members of the **Bagobo people in Zamboanga** a village in the southwest corner of the Mindanao Island, Philippines. Spanning the Indian Ocean we find our final card was mailed in 1910 from the Transvaal. Epstein & Co. of Durban, South Africa published **Young Zulus**.

This should be an interesting slide program. Make a point to attend the September meeting.



Young Zulus

*Pretty babe.  
Will bring one back.*